

SECTION CORNER RECORD

BOONE COUNTY SURVEYOR'S OFFICE

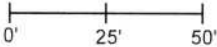
NW 400-800

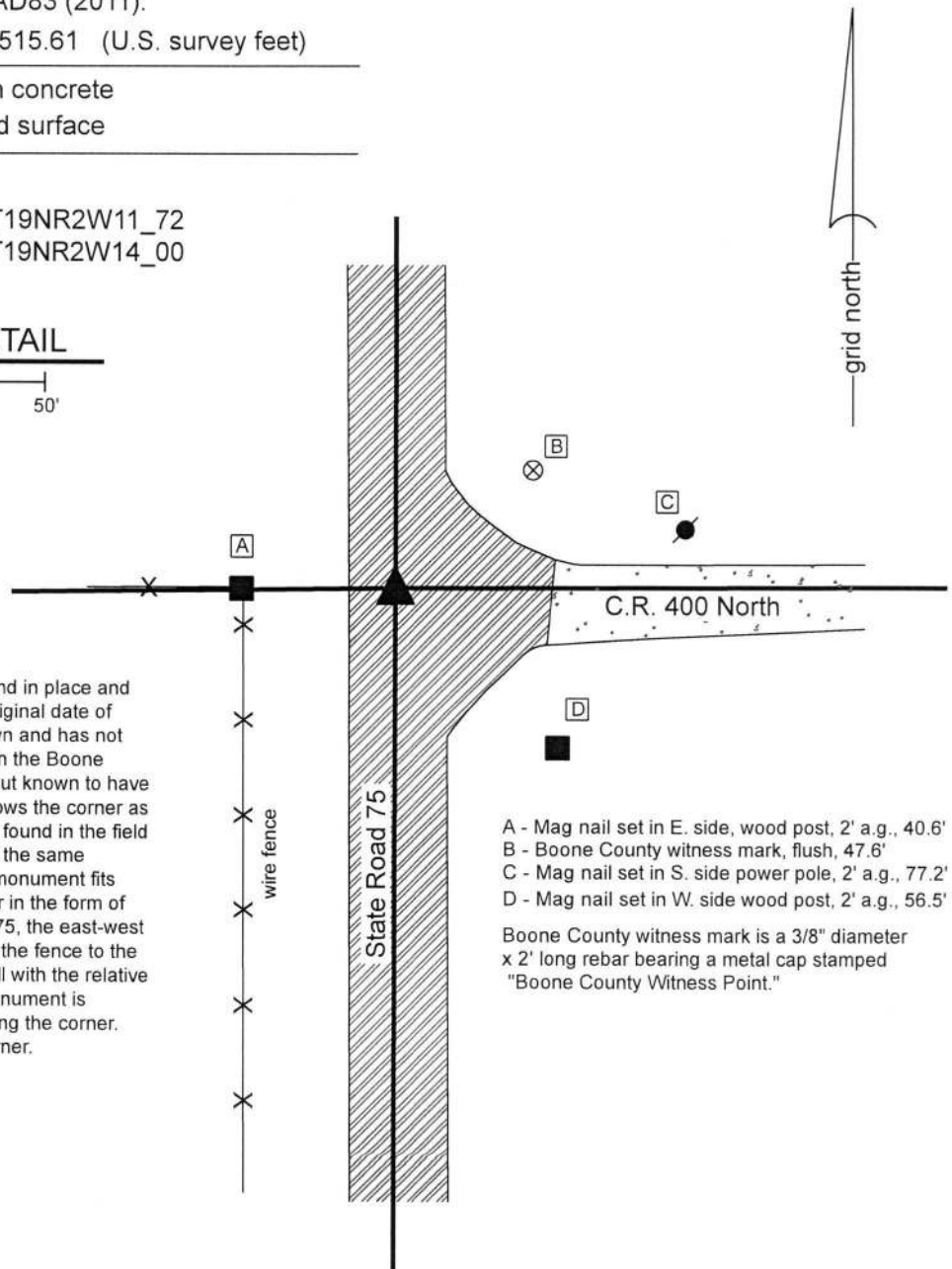
State Plane grid coordinates NAD83 (2011):
 North: 1766780.79 East: 3082515.61 (U.S. survey feet)

Type of monument: Iron plug in concrete
 Depth: Flush with adjacent road surface

Indiana tie card references:
 IN02_T19NR2W10_80 IN02_T19NR2W11_72
 IN02_T19NR2W15_08 IN02_T19NR2W14_00

CORNER WITNESS DETAIL

SCALE 1" = 50' 

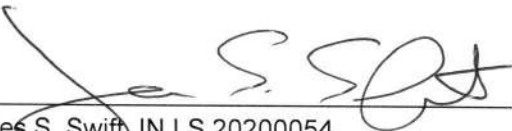


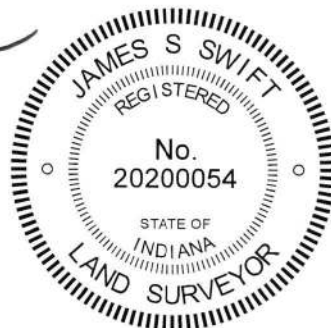
The iron monument in concrete was found in place and accepted as marking the corner. The original date of installation of this monument is not known and has not been confirmed by INDOT. A tie sheet in the Boone County Surveyor's Office with no date, but known to have been submitted to the office in 2001, shows the corner as an iron pin in concrete. The monument found in the field is believed to be the same monument at the same position as shown on the tie card. The monument fits well with the local evidence of the corner in the form of the north-south roadway of State Road 75, the east-west roadway of County Road 400 North and the fence to the west. The position of the corner fits well with the relative distances to proximate corners. The monument is believed to be widely accepted as marking the corner. No excavation was performed at this corner.

- A - Mag nail set in E. side, wood post, 2' a.g., 40.6'
- B - Boone County witness mark, flush, 47.6'
- C - Mag nail set in S. side power pole, 2' a.g., 77.2'
- D - Mag nail set in W. side wood post, 2' a.g., 56.5'

Boone County witness mark is a 3/8" diameter x 2' long rebar bearing a metal cap stamped "Boone County Witness Point."


 Kenneth E. Hedge, County Surveyor


 James S. Swift, IN LS 20200054
 July 3, 2018



Sugar Creek
 Township

Jefferson
 Township

Section 10 T19N, R2W	Section 11 T19N, R2W
Section 15 T19N, R2W	Section 14 T19N, R2W