

SECTION CORNER RECORD

SE 100-300

BOONE COUNTY SURVEYOR'S OFFICE

State Plane grid coordinates NAD83 (NSRS 2007):

North: 1740760.62 East: 3140515.09 (U.S. survey feet)

Type of monument: Harrison, 4" disk 'Section Corner'

Depth: One inch below adjacent road surface

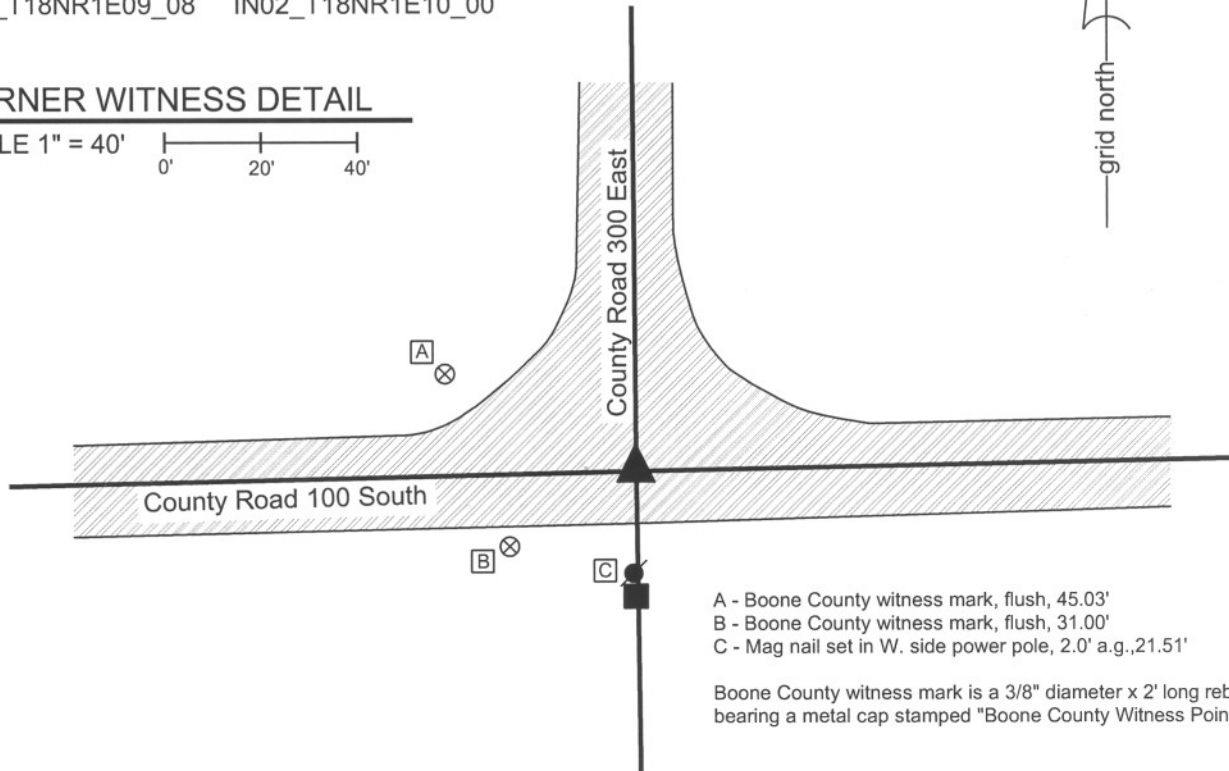
Indiana tie card references:

IN02_T18NR1E03_72 IN02_T18NR1E04_80

IN02_T18NR1E09_08 IN02_T18NR1E10_00

CORNER WITNESS DETAIL

SCALE 1" = 40'



- A - Boone County witness mark, flush, 45.03'
- B - Boone County witness mark, flush, 31.00'
- C - Mag nail set in W. side power pole, 2.0' a.g., 21.51'

Boone County witness mark is a 3/8" diameter x 2' long rebar bearing a metal cap stamped "Boone County Witness Point."

The harrison monument was set over the etched "+" on a stone found.

A BCS record of February 19, 1876 states "Reestablished at the intersection of lines. Set 2 rocks. Lower one 9,9,12 + on top. Upper one 7,12,14 + on top side." A BCS tie card dated October 1975 states "Stone found + rail 6". A BCS information sheet dated August 5, 1989 calls for a railroad rail found. A BCS tie card dated June 20, 1991 shows the corner as a railroad rail found. A BCS tie card dated October 15, 2005 shows the corner as a harrison monument with no documentation of source.

This corner was excavated on August 14, 2009. Prior to excavation a harrison monument was visible at the surface. Excavation revealed a railroad rail found at 12 inches deep. The harrison monument had been 0.2 feet west of the rail. A stone was found at 20 inches deep north and west of the rail. This stone was entirely within the road material and did not match the record descriptions. It was removed. Another stone was found directly below at 25 inches deep. This stone is 14 inches EW by 12 inches NS by 7 inches thick, matching the record description for the upper stone as described in the 1876 record. This stone was also removed. The record lower stone was found below it at 33 inches deep. This stone is 12 inches NS by 9 inches EW and fully embedded in the clay layer below the base of the road. The total height was not measured. A vague chiseled "+" was found at the top, high point of the stone, towards the southeast corner of the stone. The harrison monument was set over the chiseled "+". The old harrison monument had been 0.6 foot south and 0.2 foot east of the chiseled "+" on the stone.

This corner was originally established as a wood post in June, 1820.



Kenneth E. Hedge
 Kenneth E. Hedge, County Surveyor

James S. Swift
 James S. Swift, IN LS 20200054
 July 14, 2010

Center Township

Section 4 T18N, R1E	Section 3 T18N, R1E
Section 9 T18N, R1E	Section 10 T17N, R1E

PHOTOGRAPHIC DOCUMENTATION

Date of photography: August 14, 2009

View of the railroad rail as first exposed.



View of the upper most stone as first exposed.



View of the second stone found, being the upper stone described in the 1876 record.



View of the third stone found, being the lower stone described in the 1876 record.



Close-up of the lower record stone.



The lower record stone. The point of the chaining pin marks the etched mark on the stone.



For details and documentation, refer to related sheet "Section Corner Record."

SECTION CORNER RECORD

SE 100-350

BOONE COUNTY SURVEYOR'S OFFICE

State Plane grid coordinates NAD83 (NSRS 2007):

North: 1740813.55 East: 3143167.56 (U.S. survey feet)

Type of monument: Harrison, 4" disk 'Section Corner'

Depth: One inch below adjacent road surface

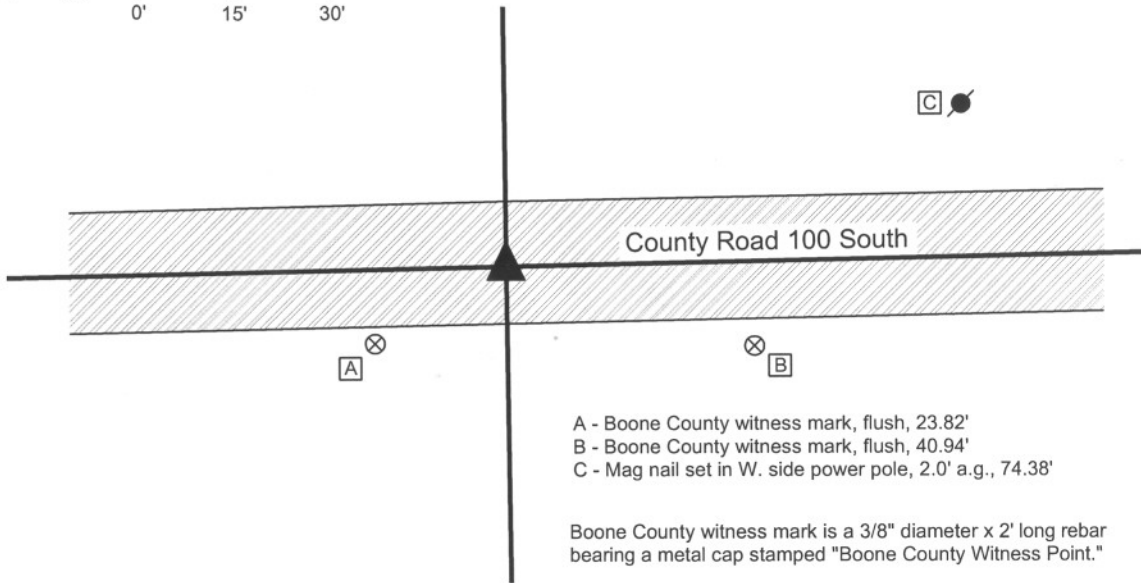
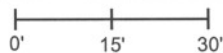
Indiana tie card references:

IN02_T18NR1E03_76

IN02_T18NR1E10_04

CORNER WITNESS DETAIL

SCALE 1" = 30'



The harrison monument was set directly over a stone found.

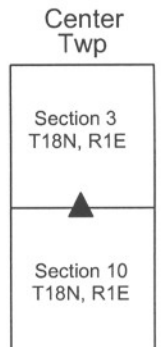
A BCS Record of August 16, 1869 refers to this corner and the corner one-half mile east as "Stones that were set." A BCS record of February 5, 1872 also refers to this corner as "A stone that was set." It is believed that this terminology was intended to mean that the stone was found and appeared to be a monument intentionally set in the past. A BCS record of November 1, 1912 refers to the corners as "Found rock set." A BCS tie card dated January 18, 1994 shows the corner as a railroad spike with no documentation of source. A BCS tie card dated October 15, 2005 shows the corner as a harrison monument, also with no documentation of source.

This corner was excavated on October 28, 2009. Prior to excavation a harrison monument was visible at the surface. Excavation revealed no metal monument below the harrison. Excavation did reveal a stone found at 13 inches deep. The stone was fully embedded in the clay layer below the road, with the top of the stone at the top of the clay layer. With 10 inches of the stone exposed, the monument measured 12 inches E-W by 12 inches N-S and remained completely stable, indicating that it extends deeper into the clay. No visible marks were found on the stone. The high point of the stone, which is at the top, center was held as the corner. The harrison monument was set over this point. The previously existing harrison monument had been south and east of the stone and was not over any part of the stone. The new harrison monument is 0.25 feet North and 0.5 feet West of the previous harrison. It is noted that the original federal measurements to this corner indicate that it was set at the midpoint between the corners to the east and west. However, as found and measured in 2009, the south line of the southwest quarter is approximately 20 feet longer than the south line of the southeast quarter. The BCS "Surveyor's Record" demonstrates that this inequality has long existed and is also demonstrated by measurements performed in 1869 and 1898. This corner was originally established as a wood post in June, 1820.



Kenneth E. Hedge
 Kenneth E. Hedge, County Surveyor

James S. Swift
 James S. Swift, IN LS 20200054
 July 14, 2010



PHOTOGRAPHIC DOCUMENTATION

Date of photography: October 28, 2009

View of the stone as first exposed.



View of the stone more fully exposed.



View from the east, looking across the stone and west along County Road 100 South.



View from above the stone, looking east along County Road 100 South.



For details and documentation, refer to related sheet "Section Corner Record."

SECTION CORNER RECORD

SE 100-400

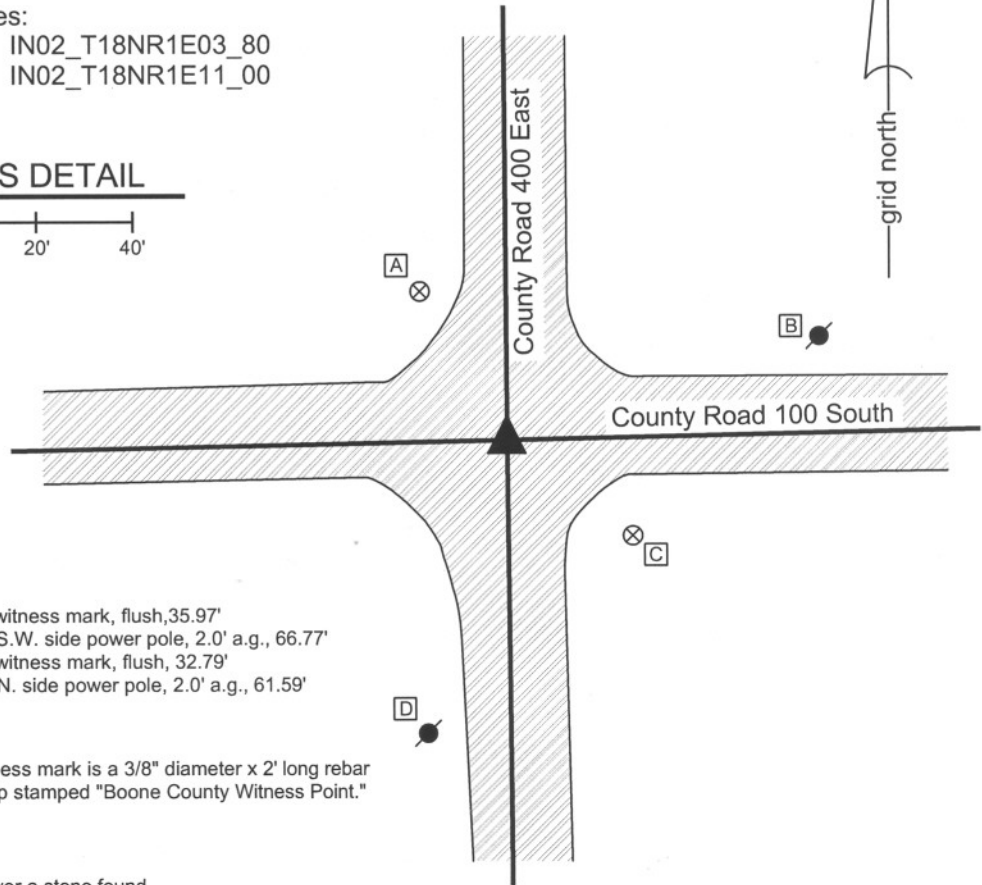
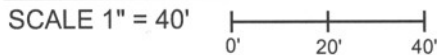
BOONE COUNTY SURVEYOR'S OFFICE

State Plane grid coordinates NAD83 (NSRS 2007):
 North: 1740865.64 East: 3145800.70 (U.S. survey feet)

Type of monument: Harrison, 4" disk 'Section Corner'
 Depth: One inch below adjacent road surface

Indiana tie card references:
 IN02_T18NR1E02_72 IN02_T18NR1E03_80
 IN02_T18NR1E10_08 IN02_T18NR1E11_00

CORNER WITNESS DETAIL



- A - Boone County witness mark, flush, 35.97'
- B - Mag nail set in S.W. side power pole, 2.0' a.g., 66.77'
- C - Boone County witness mark, flush, 32.79'
- D - Mag nail set in N. side power pole, 2.0' a.g., 61.59'

Boone County witness mark is a 3/8" diameter x 2' long rebar bearing a metal cap stamped "Boone County Witness Point."

The harrison monument was set over a stone found.
 A BCS Record of August 16, 1869 refers to this corner and the corner one-half mile west as "Stones that were set." It is believed that this terminology was intended to mean that the stone were found and appeared to be monuments intentionally set in the past. A BCS record of November 1, 1912 refers to the corners as "Found rock set." A BCS tie card dated August 16, 1967 states "no stone" and demonstrates a location for the corner but does not state what monument was set. A BCS tie card dated October 15, 2005 shows the corner as a harrison monument with no documentation of source.
 This corner was excavated on August 11, 2009. Prior to excavation a harrison monument was visible at the surface. Excavation revealed a railroad rail at 9 inches deep, directly below the harrison monument. Although not documented as such, it is likely that the railroad rail was set on August 16, 1967. Further excavation revealed a wood stake found at 8 inches deep, south and west of the harrison and railroad rail. A stone was found at 21 inches deep, directly below the wood stake. The stone is embedded in the clay layer below the road, with approximately 2 inches protruding out the clay and into the base layer of the road. With 8 inches exposed, the stone measures 12 inches N-S by 10 inches E-W and remained entirely stable, indicating that it extends further into the clay layer. No specific markings were found on the stone. The harrison monument was set over the top, center of the stone.
 The previous harrison and railroad rail, both of which were removed during excavation, had been 3.4 feet north and 0.9 feet east.
 This corner was originally established as a wood post in June, 1820.



Kenneth E. Hedge
 Kenneth E. Hedge, County Surveyor

James S. Swift
 James S. Swift, IN LS 20200054
 July 14, 2010

Center Twp	Worth Twp
Section 3 T18N, R1E	Section 2 T18N, R1E
Section 10 T18N, R1E	Section 11 T18N, R1E

PHOTOGRAPHIC DOCUMENTATION

Date of photography: August 11, 2009

View of the stone as first exposed.



View of the stone more fully exposed.



View from the east, looking across the stone and west along County Road 100 South.



View from the north, looking across the stone and south along County Road 400 East.



For details and documentation, refer to related sheet "Section Corner Record."

SECTION CORNER RECORD

SE 150-300

BOONE COUNTY SURVEYOR'S OFFICE

State Plane grid coordinates NAD83 (NSRS 2007):
North: 1738112.66 East: 3140537.65 (U.S. survey feet)

Type of monument: Harrison, 4" disk 'Section Corner'
Depth: Three inches above the adjacent ground.

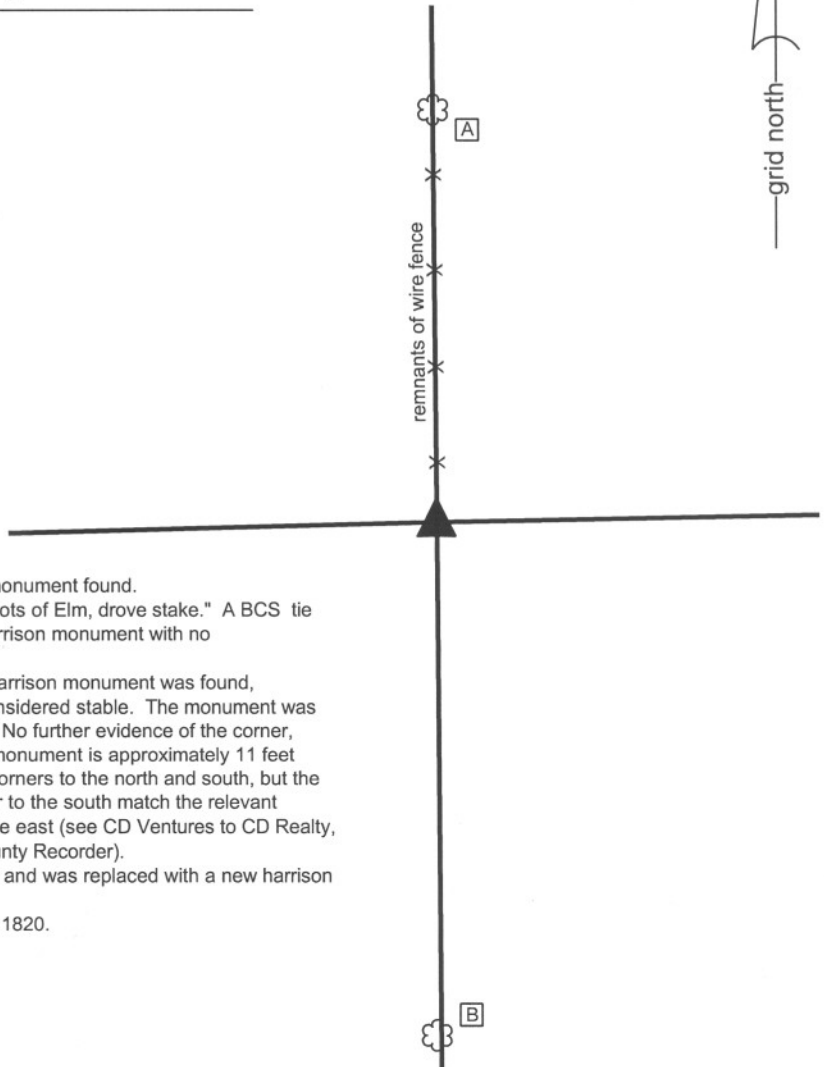
Indiana tie card references:
IN02_T18NR1E09_44
IN02_T18NR1E10_36



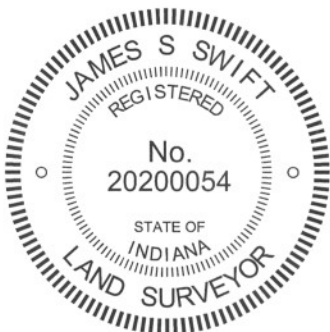
CORNER WITNESS DETAIL

SCALE 1" = 40'

- A - South edge of 36 inch diameter Oak tree, 82.6'
- B - North edge of 27 inch diameter Oak tree, 103.4'

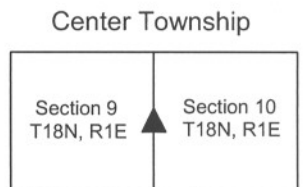


The harrison monument was set in place of a harrison monument found.
A BCS record of October 22, 1886 states "found from roots of Elm, drove stake." A BCS tie card date November 28, 2005 shows the corner as a harrison monument with no documentation of source.
This corner was excavated on November 15, 2010. A harrison monument was found, apparently undisturbed but set directly in dirt and not considered stable. The monument was found at the west edge of a remnant north-south fence. No further evidence of the corner, beyond the fence and the monument were found. The monument is approximately 11 feet north of the midpoint of the line connecting the section corners to the north and south, but the relative position of the monument with the section corner to the south match the relevant distance call in the land description for the property to the east (see CD Ventures to CD Realty, LLC, Instrument 9810113 in the Office of the Boone County Recorder).
The harrison monument was held as marking the corner and was replaced with a new harrison monument set in concrete.
This corner was originally established as a wood post in 1820.



Kenneth E. Hedge
Kenneth E. Hedge, County Surveyor

James S. Swift
James S. Swift, IN LS 20200054
July 25, 2011



SECTION CORNER RECORD

SE 150-400

BOONE COUNTY SURVEYOR'S OFFICE

State Plane grid coordinates NAD83 (NSRS 2007):

North: 1738208.11 East: 3145826.04 (U.S. survey feet)

Type of monument: Harrison, 4" disk 'Section Corner'

Depth: One inch below adjacent road surface

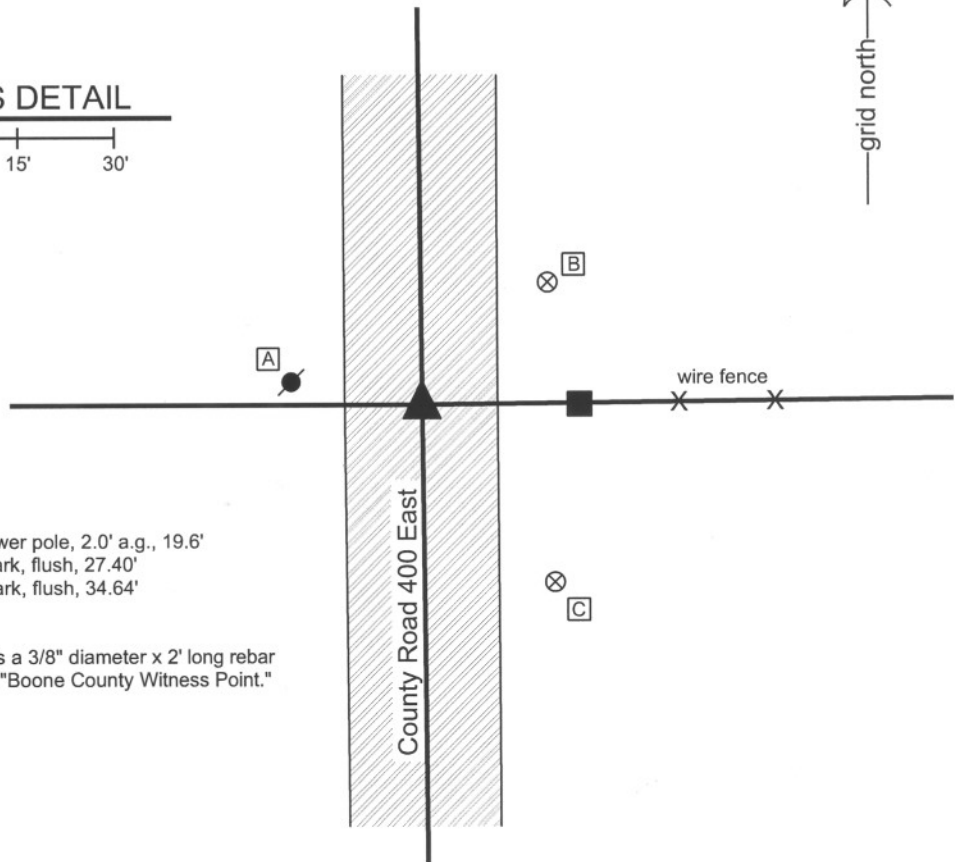
Indiana tie card references:

IN02_T18NR1E10_44

IN02_T18NR1E11_36

CORNER WITNESS DETAIL

SCALE 1" = 30'



- A - Mag nail set in E. side power pole, 2.0' a.g., 19.6'
- B - Boone County witness mark, flush, 27.40'
- C - Boone County witness mark, flush, 34.64'

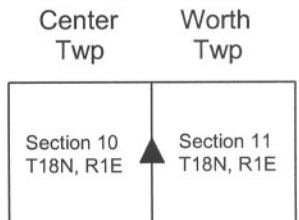
Boone County witness mark is a 3/8" diameter x 2' long rebar bearing a metal cap stamped "Boone County Witness Point."

The harrison monument was set in place of a harrison monument found and a railroad rail found. A BCS record of February 14, 1910 states "found rock." A BCS tie card dated October, 1975 states "Found stone - set rail." A BCS tie card dated August 4, 2005 shows the corner as a harrison monument with no documentation of source. Prior to excavation a harrison monument was found one inch below the adjacent asphalt. Excavation revealed a railroad rail on end 10 inches deep directly below the harrison. No other evidence was found. The 1975 record does not specifically state that the stone was removed and the rail was set in its place, but it is known that this was a procedure of BCS field crews from that period. The lack of the stone indicates that the rail was set in its place. Both the harrison monument and railroad rail were removed during excavation and a new harrison monument was set in their place. This corner was originally established as a wood post in June, 1820.



Kenneth E. Hedge
Kenneth E. Hedge, County Surveyor

James S. Swift
James S. Swift, IN LS 20200054
July 14, 2010



SECTION CORNER RECORD

SE 200-300

BOONE COUNTY SURVEYOR'S OFFICE

State Plane grid coordinates NAD83 (NSRS 2007):

North: 1735442.39 East: 3140559.96 (U.S. survey feet)

Type of monument: Harrison, 4" disk 'Section Corner'

Depth: three inches above adjacent ground

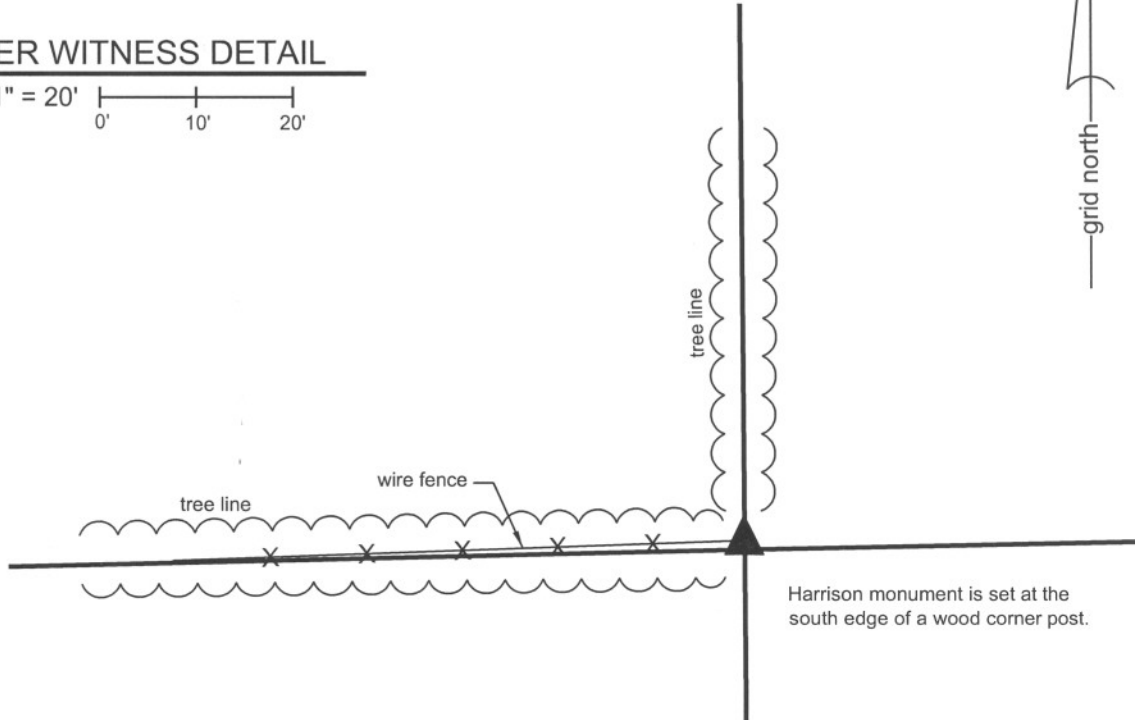
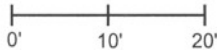
Indiana tie card references:

IN02_T18NR1E09_80 IN02_T18NR1E10_72

IN02_T18NR1E16_08 IN02_T18NR1E15_00

CORNER WITNESS DETAIL

SCALE 1" = 20'



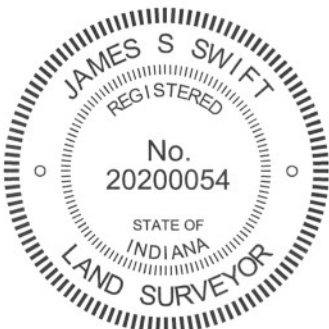
The harrison monument was set in place of a harrison monument found.

A BCS record of October 22, 1886 states "Found from roots of Oak set a stone at cor." A BCS tie card dated November 28, 2005 shows the corner as a harrison monument with no documentation of source.

This corner was excavated and monumented on October 22, 2010. A harrison monument was found at the southwest corner of the base of a wood corner post per the 2005 tie card. Numerous stones of a variety of sizes were found around the corner post, none of which had specific identifiable markings or which appeared to represent the section corner. A large rock found at the southeast corner of the post appeared to be a brace rock. The 2005 tie card does not document why the harrison monument was set at the base of the corner post or why the post itself was not held as the corner. Given the presence of the harrison monument and its immediate proximity to the post, the monument was held as the corner. The monument was reset in the same position in a more stable manner.

The land adjacent to this corner is utilized as agricultural land and no acceptable witness ties were available. An orange fiberglass witness post was set at the side of the harrison monument to facilitate detection by field surveyors.

This corner was originally established as a wood post in 1820.



Kenneth E. Hedge
Kenneth E. Hedge, County Surveyor

James S. Swift
James S. Swift, IN LS 20200054
July 25, 2011

Center Township

Section 9 T18N, R1E	Section 10 T18N, R1E
Section 16 T18N, R1E	Section 15 T18N, R1E

SECTION CORNER RECORD

SE 200-350

BOONE COUNTY SURVEYOR'S OFFICE

State Plane grid coordinates NAD83 (NSRS 2007):

North: 1735495.75 East: 3143205.84 (U.S. survey feet)

Type of monument: Harrison, 4" disk 'Section Corner'

Depth: flush with adjacent ground

Indiana tie card references:

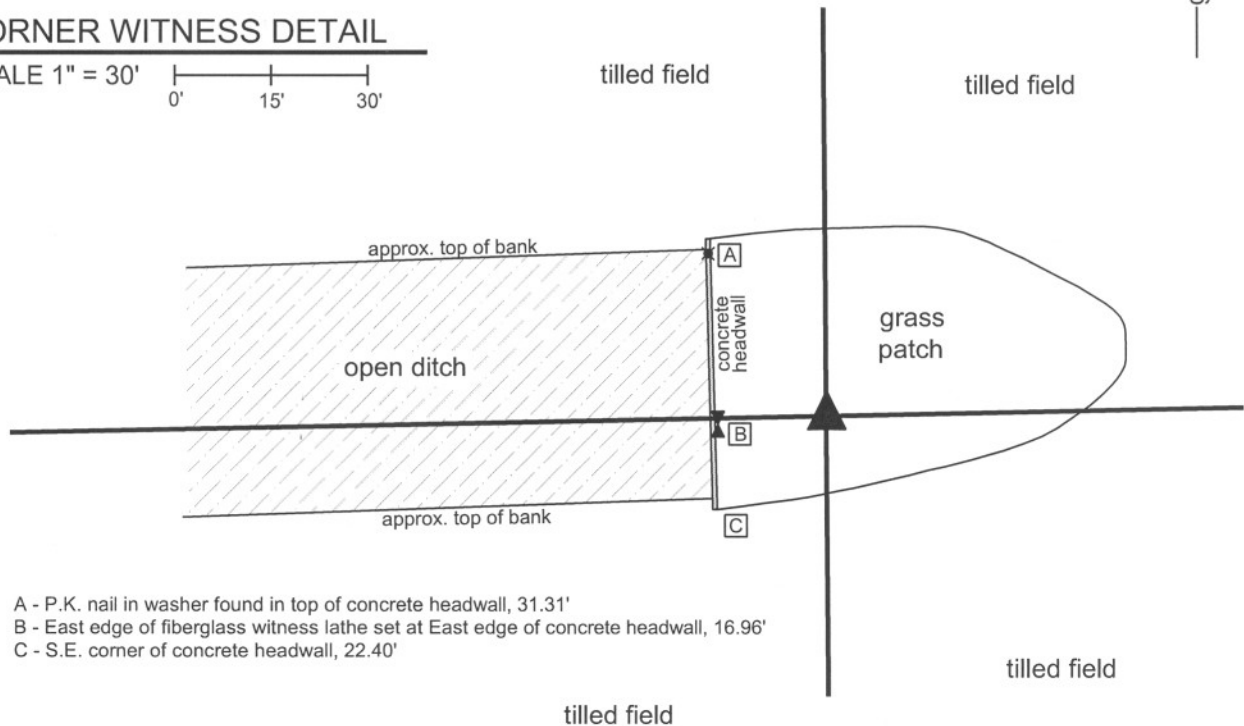
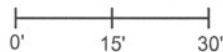
IN02_T18NR1E10_76

IN02_T18NR1E15_04



CORNER WITNESS DETAIL

SCALE 1" = 30'



A - P.K. nail in washer found in top of concrete headwall, 31.31'

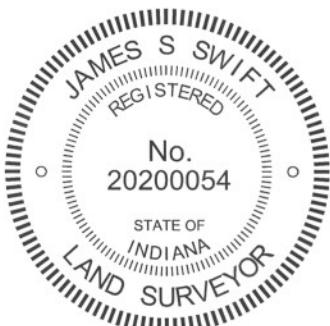
B - East edge of fiberglass witness lathe set at East edge of concrete headwall, 16.96'

C - S.E. corner of concrete headwall, 22.40'

The harrison monument was set in place of a harrison monument found.

A BCS record of March 24-25, 1913 states "Set rock 12x1215 +." A BCS tie card dated November 28, 2005 shows the corner as a harrison monument with no documentation of the source. This corner falls in an area that is known to have been disturbed by excavation activities associated with the adjacent open ditch. It is not considered likely that a corner stone or other evidence survived the excavation in this area. The existing harrison monument was accepted as the best available evidence of the corner. The harrison was removed and reset in a more stable manner.

This corner was originally established as a wood post in 1820.



Kenneth E. Hedge
Kenneth E. Hedge, County Surveyor

James S. Swift
James S. Swift, IN LS 20200054
July 25, 2011

Center Twp

Section 10
T18N, R1E

Section 15
T18N, R1E

SECTION CORNER RECORD

SE 200-400

BOONE COUNTY SURVEYOR'S OFFICE

State Plane grid coordinates NAD83 (NSRS 2007):
North: 1735548.72 East: 3145851.54 (U.S. survey feet)

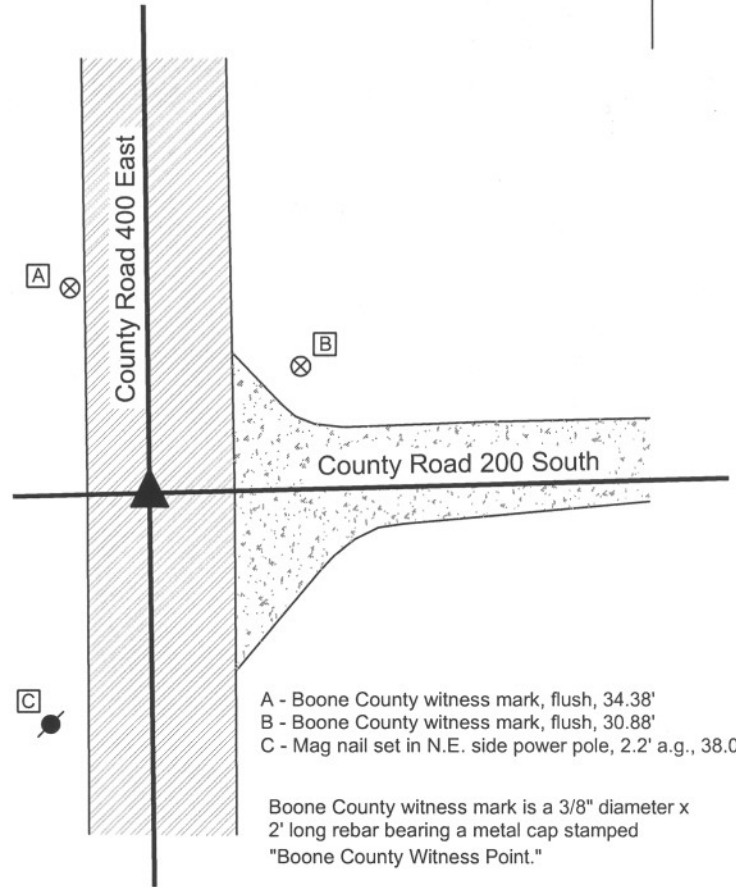
Type of monument: Harrison, 4" disk 'Section Corner'
Depth: One inch below adjacent road surface

Indiana tie card references:
IN02_T18NR1E10_80 IN02_T18NR1E11_72
IN02_T18NR1E14_00 IN02_T18NR1E15_08

CORNER WITNESS DETAIL

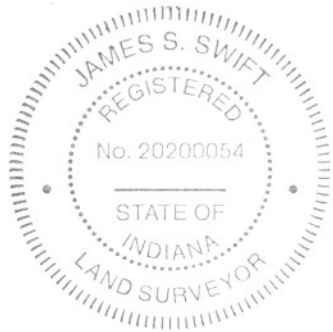
SCALE 1" = 30'
0' 15' 30'

The harrison monument was set in the position of a harrison monument found above a railroad rail.
A BCS record of September 21, 1868 states "Reestablished from stump of Oak. Set stake." A BCS record of March 24-25, 1913 states "Set rock 7x14x16 +". A BCS tie card dated November, 1970 states "no stone" and shows an "R" at the position of the corner, likely indicating a railroad rail. A BCS tie card dated October 21, 2005 calls for a harrison monument with no documentation of source.
This corner was excavated on June 10, 2008. Prior to excavation the harrison monument was visible 1 inch below the surrounding road surface. The rail was found at 8 inches deep, below the harrison. A stone was found at 9 inches deep, east of the rail. The stone measures approximately the record dimensions of 7x14x16, though no specific markings were discernable. The stone was found lying horizontally (as opposed to the typical vertical position of stones set by county surveyors in that era) at the top of the clay layer, within the gravel base of the road. The stone was not embedded in the clay. It appeared that the stone may have been disturbed in its position, presumably by a road grader. Minimal certainty could be attached to the situation of the stone with respect to depth, stability and markings. While the 1970 record was erroneous in the statement "no stone" it was observed that the rail had been placed essentially along the west side of the stone. The rail was as close to the stone as the stone may have been to its original position. Given the uncertainties with respect to the stone and the general acceptance of the rail as the corner, the rail was held as marking the corner and the harrison was set in the position of the rail and previous harrison. The stone was removed.
This corner was originally established as a wood post in June, 1820.



- A - Boone County witness mark, flush, 34.38'
- B - Boone County witness mark, flush, 30.88'
- C - Mag nail set in N.E. side power pole, 2.2' a.g., 38.00'

Boone County witness mark is a 3/8" diameter x 2' long rebar bearing a metal cap stamped "Boone County Witness Point."



Kenneth E. Hedge
Kenneth E. Hedge, County Surveyor

James S. Swift
James S. Swift, IN LS 20200054

March 11, 2009

Center Twp	Worth Twp
Section 10 T18N, R1E	Section 11 T18N, R1E
Section 15 T18N, R1E	Section 14 T18N, R1E