

SECTION CORNER RECORD

SE 700-900

BOONE COUNTY SURVEYOR'S OFFICE

State Plane grid coordinates NAD83 (NSRS 2007):
North: 1709444.34 East: 3173021.29 (U.S. survey feet)

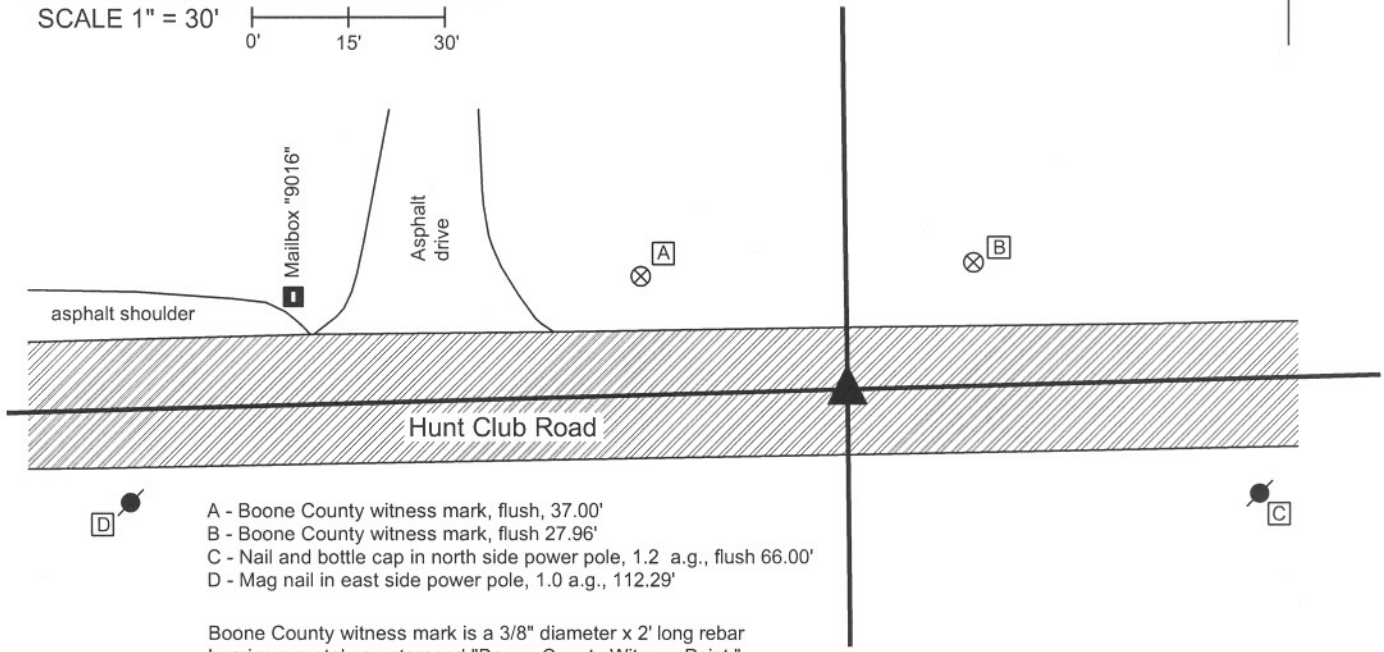
Type of monument: Harrison, 4" disk 'Section Corner'
Depth: 1" below road surface

Indiana tie card references:
IN02_T17NR2E03_72 IN02_T17NR2E04_80
IN02_T17NR2E09_08 IN02_T17NR2E10_00



CORNER WITNESS DETAIL

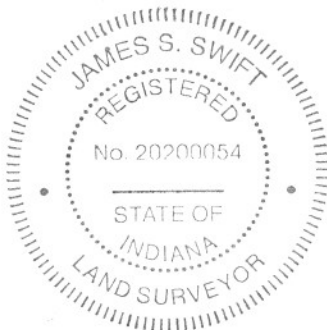
SCALE 1" = 30'
0' 15' 30'



- A - Boone County witness mark, flush, 37.00'
- B - Boone County witness mark, flush 27.96'
- C - Nail and bottle cap in north side power pole, 1.2 a.g., flush 66.00'
- D - Mag nail in east side power pole, 1.0 a.g., 112.29'

Boone County witness mark is a 3/8" diameter x 2' long rebar bearing a metal cap stamped "Boone County Witness Point."

The Harrison monument was set in place of a railroad rail found, the top of which was 4 inches below the surface of the road. A previous tie card indicates that the rail was set in place of a stone found, April 1970. A black igneous stone was found during excavation, approximately 1.8 feet deep and 1.2 feet south and west of the rail. It is not clear whether this is the same stone which was previously found and displaced by the rail or whether this is a different stone. No record prior to 1970 was found for a stone at this corner. A 1 inch diameter iron pipe with a nail driven in the top was found situated against the north side of the rail. The nail and top of the pipe were approximately 3 inches below the surface of the road and 0.1' north of the center of the top of the rail. Previous private surveys call for a mag nail, bolt and nail-in-pipe. The nail, pipe and rail were removed during excavation. This corner was originally established in July, 1821.



Kenneth E. Hedge
Kenneth E. Hedge, County Surveyor

J. S. Swift
James S. Swift, IN LS 20200054
December 21, 2007

Eagle Township

Section 4 T17N, R2E	Section 3 T17N, R2E
Section 9 T17N, R2E	Section 10 T17N, R2E

PHOTOGRAPHIC DOCUMENTATION

Date of photography: 11/09/2007

Photograph of iron pipe with nail in it and railroad rail. BCS records from April, 1970 state that a found stone was replaced with a railroad rail. The photograph is oriented with north towards the top of the page. The top of the iron pipe was 3 inches below the surface of the road and the top of the rail was 4 inches below the surface of the road. The Harrison monument was set in the position of the approximate center of mass of the top of the rail, being the approximate midpoint of the skinny section between the track and the base.



Black igneous stone found south and slightly west of the rail. This stone was found at 1.8 feet deep and was left in place. It is not known whether this is the same stone found and replaced with the rail in April 1970, or whether this is a different stone.

black igneous stone



SECTION CORNER RECORD

SE 700-950

BOONE COUNTY SURVEYOR'S OFFICE

State Plane grid coordinates NAD83 (NSRS 2007):

North: 1709515.28 East: 3175704.07 (U.S. survey feet)

Type of monument: Harrison, 4" disk 'Section Corner'

Depth: One inch below adjacent road surface

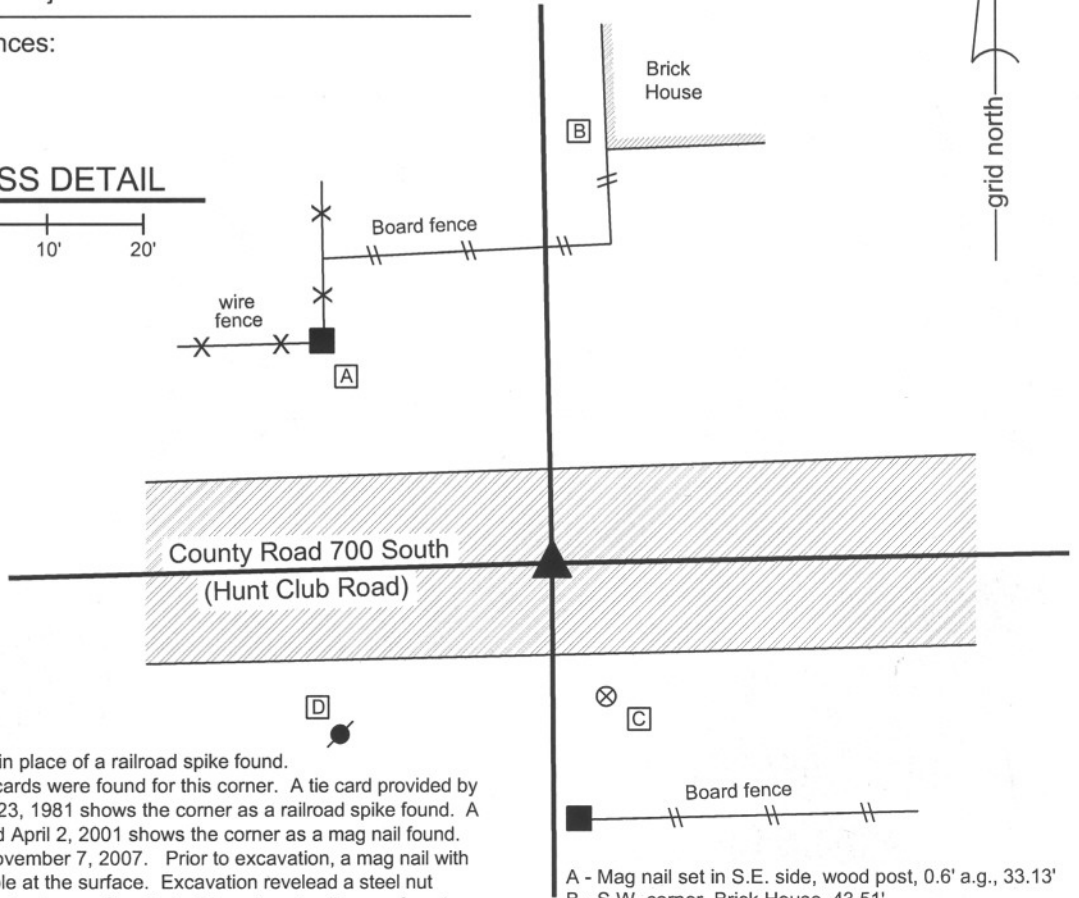
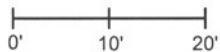
Indiana tie card references:

IN02_T17NR2E03_76

IN02_T17NR2E10_04

CORNER WITNESS DETAIL

SCALE 1" = 20'



The harrison monument was set in place of a railroad spike found. No old BCS stone records or tie cards were found for this corner. A tie card provided by Paul I. Cripe, inc. dated January 23, 1981 shows the corner as a railroad spike found. A tie card provided by INDOT dated April 2, 2001 shows the corner as a mag nail found. This corner was excavated on November 7, 2007. Prior to excavation, a mag nail with a blank shiner (washer) was visible at the surface. Excavation revealed a steel nut below the mag nail, just below the top layer of asphalt. The railroad spike was found several inches deep approximately 0.3 foot South and 0.4 foot West of the mag nail and nut. The railroad spike did not register on a magnetic locator and appeared to have lost its magnetism. The steel nut did register on the locator. It is logical to conclude that a survey crew installed the mag nail at the point where their magnetic locator gave the strongest reading in the immediate vicinity of the corner. The mag nail appeared to be set directly in the asphalt surface of the road with no excavation. The railroad spike has been held for many private surveys in the area and is clearly better evidence of the corner than the steel nut, which appeared to be something dropped at random on the road and paved over. No stone or other monuments were found. This corner falls in a portion of road which passes through a ravine and the immediate vicinity of the corner appears to be in an area of cut transitioning into fill. The harrison monument was set in place of the railroad spike, which was removed.

This corner was originally established as a wood post in late June or early July, 1821.

- A - Mag nail set in S.E. side, wood post, 0.6' a.g., 33.13'
- B - S.W. corner, Brick House, 43.51'
- C - Boone County Witness Mark, flush, 14.99'
- D - Mag nail set in N.E. side power pole, 2.5' a.g., 27.58'

All tie dimensions are horizontal distance

Boone County witness mark is a 3/8" diameter x 2' long rebar bearing a metal cap stamped "Boone County Witness Point."

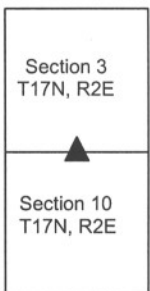


Kenneth E. Hedge
 Kenneth E. Hedge, County Surveyor

James S. Swift
 James S. Swift, IN LS 20200054

March 11, 2009

Eagle Twp



SECTION CORNER RECORD

SE 700-1000

BOONE COUNTY SURVEYOR'S OFFICE

State Plane grid coordinates NAD83 (NSRS 2007):

North: 1709561.12 East: 3178346.78 (U.S. survey feet)

Type of monument: Harrison, 4" disk 'Section Corner'

Depth: One inch below adjacent road surface

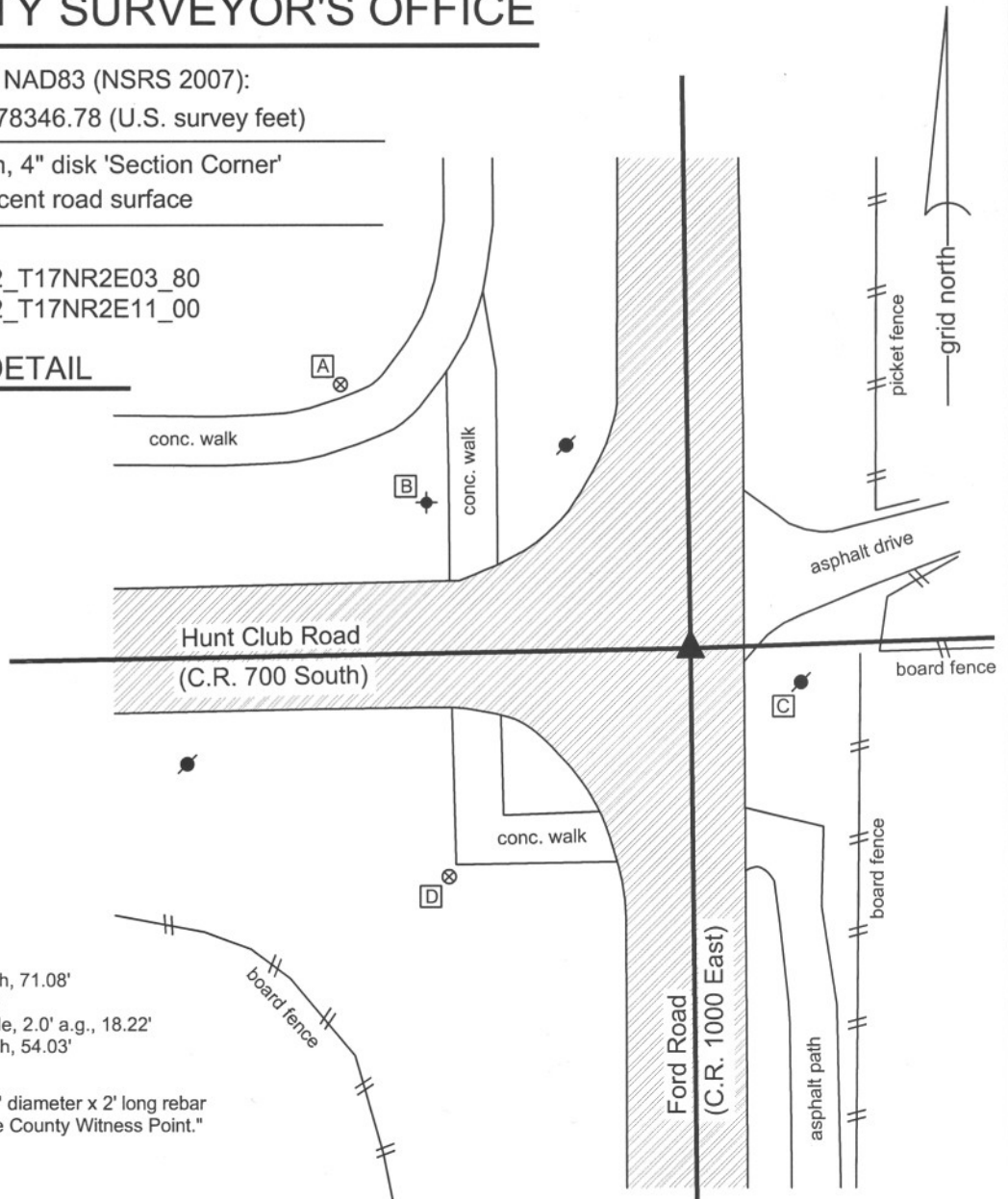
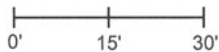
Indiana tie card references:

IN02_T17NR2E02_72 IN02_T17NR2E03_80

IN02_T17NR2E10_08 IN02_T17NR2E11_00

CORNER WITNESS DETAIL

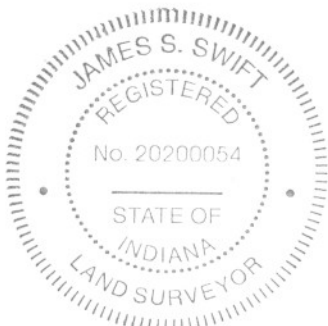
SCALE 1" = 30'



- A - Boone County witness mark, flush, 71.08'
- B - Top SSE bolt, fire hydrant, 48.81'
- C - Mag nail set in W. side power pole, 2.0' a.g., 18.22'
- D - Boone County witness mark, flush, 54.03'

Boone County witness mark is a 3/8" diameter x 2' long rebar bearing a metal cap stamped "Boone County Witness Point."

The harrison monument was set over a railroad rail found and in place of a mag nail found and railroad spike found. No old BCS stone records were found for this corner. A BCS tie card of August 17, 1971 states "found 3' iron pipe, put in RRR." Most recorded surveys and the adjoining and proximate subdivision plats call for a railroad spike found. Some surveys reference a rebar found. Prior to excavation the visible monument was a mag nail at the surface. Excavation revealed the railroad spike, rebar and railroad rail. The railroad spike was found 8 inches deep, below the mag nail, 0.1 foot north and 0.1 foot east of the nail. The railroad rail was found at 14 inches deep, directly below the railroad spike. A 7 inch long rebar was also found, but was disturbed and its position was not firmly established. No other monuments were found in a 3 foot N-S by 3 foot E-W area centered on the mag nail. The railroad rail was left in place and a harrison monument was set directly over the rail in the position of the railroad spike. This corner was originally established as a wood post in late June or early July, 1821.



Kenneth E. Hedge
 Kenneth E. Hedge, County Surveyor

James S. Swift
 James S. Swift, IN LS 20200054

March 11, 2009

Eagle Township

Section 3 T17N, R2E	Section 2 T17N, R2E
Section 10 T17N, R2E	Section 11 T17N, R2E

SECTION CORNER RECORD

SE 750-900

BOONE COUNTY SURVEYOR'S OFFICE

State Plane grid coordinates NAD83 (NSRS 2007):

North: 1706805.36 East: 3173044.10 (U.S. survey feet)

Type of monument: Stone (top center)

Depth: flush with adjacent ground

Indiana tie card references:

IN02_T17NR2E09_44

IN02_T17NR2E10_36

CORNER WITNESS DETAIL

SCALE 1" = 30'

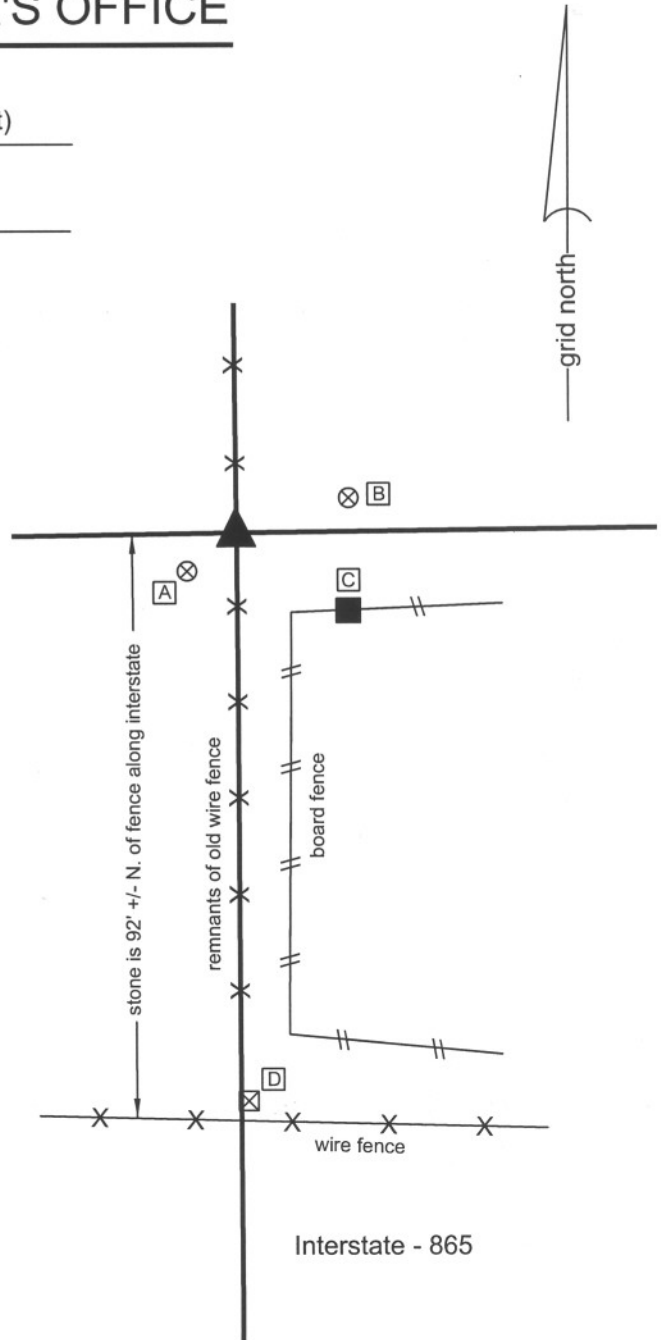


- A - Boone County witness mark, flush, 9.74'
- B - Boone County witness mark, flush, 18.24'
- C - Mag nail set in N.E. corner wood post, 2.0' a.g., 20.9'
- D - Plug in concrete monument, 0.2' a.g., 88.78'

Boone County witness mark is a 3/8" diameter x 2' long rebar bearing a metal cap stamped "Boone County Witness Point."

The stone was found in place.

No specific description of this stone was found in the BCS Surveyor's Record, though it is mentioned as the terminal point for measurements in records of 1837 and 1912. No recent BCS tie cards were found referencing this corner. The corner is shown as a stone on the plans for Interstate 465 (now called Interstate 865), dated fiscal year 1965. Refer to Project No. I-465-4 (124) 135, sheet 16 of 325. The found stone fits well with the position shown on the plans relative to centerline monumentation. The corner is shown as a stone on the plat of Irishmen's Run and on numerous private surveys. The stone was exposed and witnessed on June 9, 2009. With the top 12 inches exposed the stone measures 6 inches N-S by 4 inches E-W and remains entirely stable in the ground, indicating that the vertical dimension continues into the ground. The stone has smooth vertical grooves along both the north and south sides and a distinct high point. The high point was held as the specific location of the corner and the stone was left in place. This corner was originally established as a wood post in July, 1821.



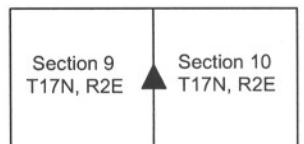
Kenneth E. Hedge
Kenneth E. Hedge, County Surveyor

James S. Swift

James S. Swift, IN LS 20200054

July 14, 2010

Eagle Township



PHOTOGRAPHIC DOCUMENTATION
Date of photography: Various (see below)

View of the stone prior to excavation on 4/27/2009.



The stone after minor excavation on 4/27/2009.



The stone and witness lathe on 6/9/2009.



The stone on 5/12/2009.



The stone with the top portion exposed on 6/9/2009.



For details and documentation, refer to related sheet "Section Corner Record."

SECTION CORNER RECORD

SE 750-1000

BOONE COUNTY SURVEYOR'S OFFICE

State Plane grid coordinates NAD83 (NSRS 2007):

North: 1706927.85 East: 3178373.58 (U.S. survey feet)

Type of monument: Harrison, 4" disk 'Section Corner'

Depth: 1/2 inch below adjacent road surface

Indiana tie card references:

IN02_T17NR2E10_44

IN02_T17NR2E11_36

CORNER WITNESS DETAIL

SCALE 1" = 50'



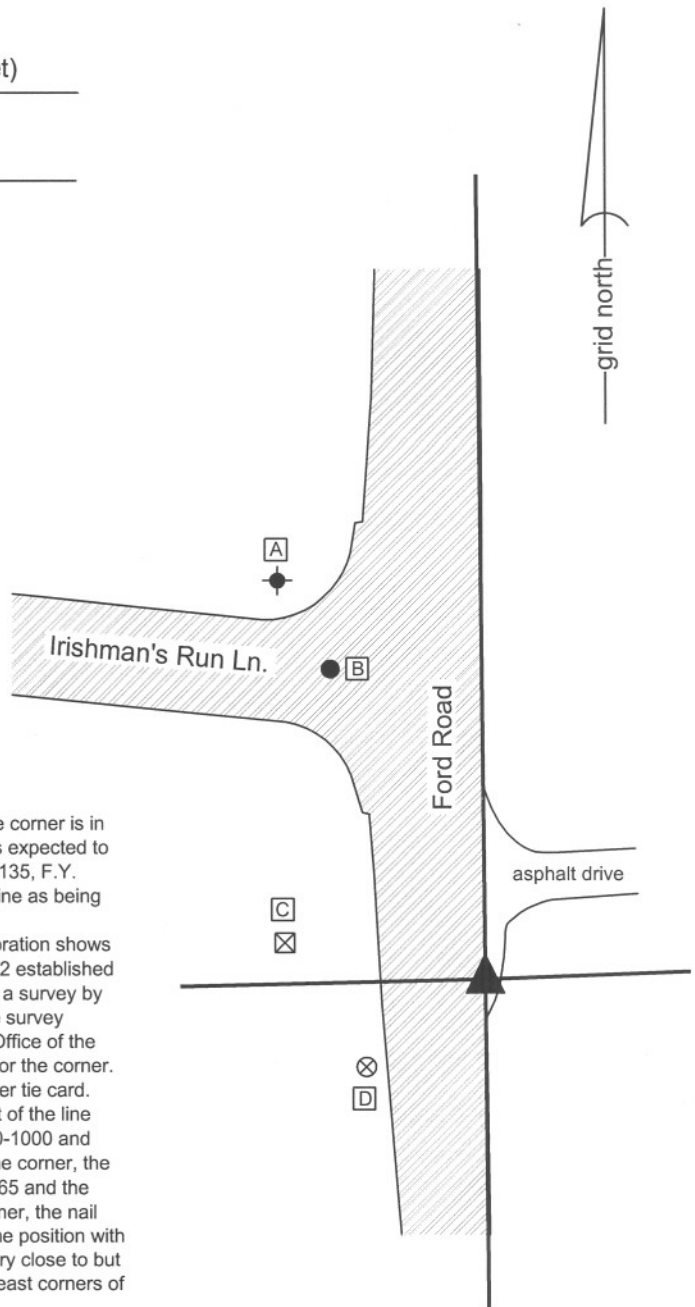
- A - Top, S.S.E. bolt, fire hydrant, 115.05'
- B - Iron pin, INDOT "control marker", flush, 25.00'
- C - Concrete nail fnd. in top, INDOT R/W marker, 52.98'
- D - Boone County witness marker, flush, 38.55'

Boone County witness mark is a 3/8" diameter x 2' long rebar bearing a metal cap stamped "Boone County Witness Point."

The harrison monument was set in place of a P.K. Nail found.

This corner falls in the approach to an overpass over Interstate I-865. The corner is in an area of a substantial amount of fill material and no ancient evidence was expected to be found. The plans for I-865, called then I-465, see project I-465-4 (124) 135, F.Y. 1965, sheet 18 of 325, do not show the corner. They do show the section line as being generally along the east side of Ford Road.

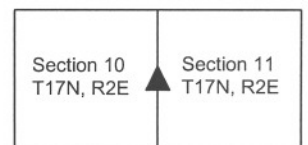
A tie card on file in this office provided by the Schneider Engineering Corporation shows the corner as "set conc nail" with the explanation "E 1/4 cor. Sec. 10-17N-02 established on line and half-way between NE and SE corners of the section. Based on a survey by Carl Anderson. By Schneider Engineering Corp. Job No. 01-88-233." The survey referenced by the job number is recorded in Survey Book 1, page 3 in the Office of the Boone County Recorder. Subsequent recorded surveys hold this position for the corner. A P.K. nail was found which fit with the distance ties shown on the Schneider tie card. The position of the P.K. nail is within 0.1 of a foot of the calculated midpoint of the line connecting the northeast and southeast corners of the section (See SE-700-1000 and SE-800-1000). Given the lack of availability of specific, local evidence of the corner, the lack of specific information for the location of the corner on the plans for I-865 and the general acceptance of the conc. nail, P.K. nail or calculated split as the corner, the nail was held as marking the corner. The physical nail was replaced in the same position with a harrison monument on May 31, 2011. As noted above, this position is very close to but not precisely at the midpoint of the line connecting the northeast and southeast corners of the section.



Kenneth E. Hedge
Kenneth E. Hedge, County Surveyor

James S. Swift
James S. Swift, IN LS 20200054
March 30, 2011

Eagle Township



SECTION CORNER RECORD

SE 800-900

BOONE COUNTY SURVEYOR'S OFFICE

State Plane grid coordinates NAD83 (NSRS 2007):
 North: 1704172.98 East: 3173059.47 (U.S. survey feet)

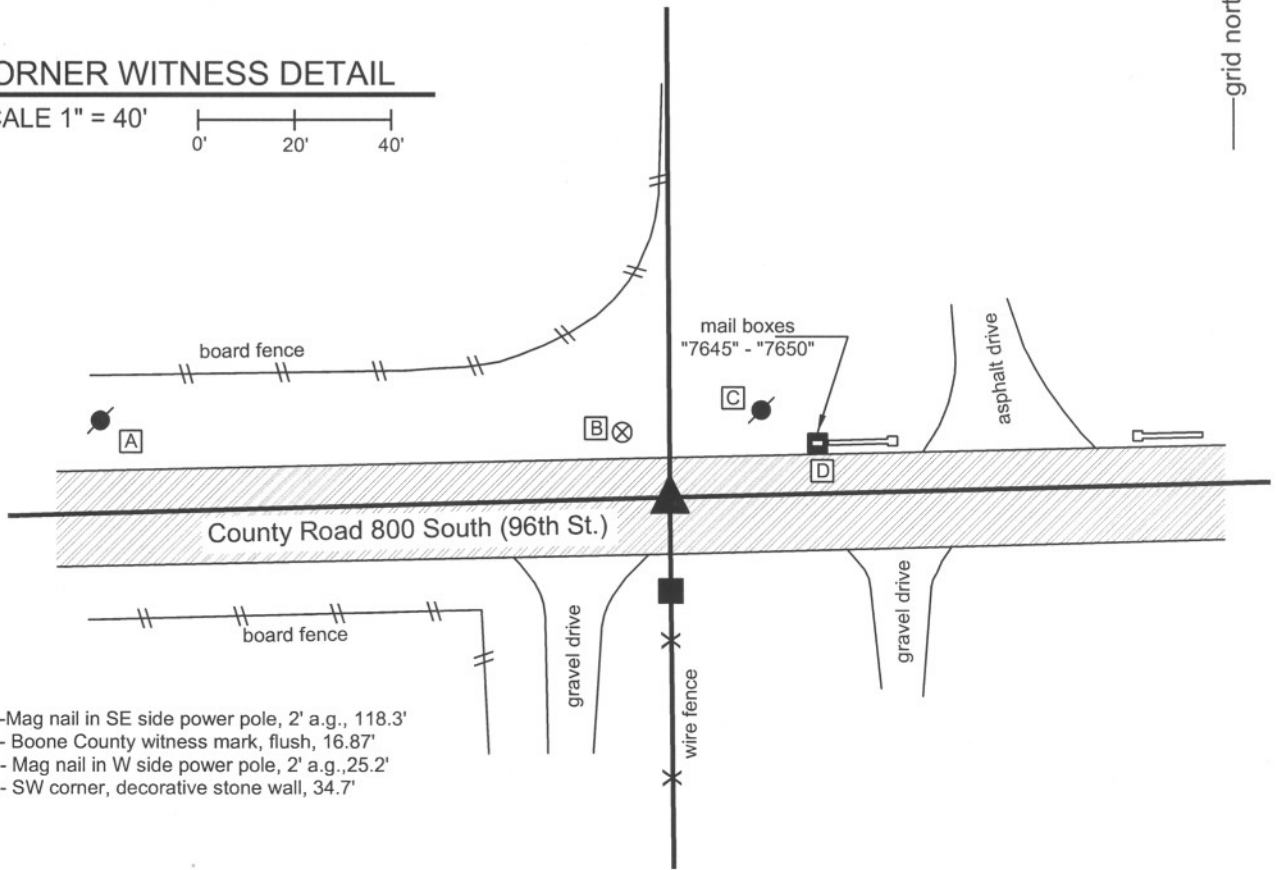
Type of monument: Harrison, 4" disk 'Section Corner'
 Depth: flush with road surface

Indiana tie card references:
 IN02_T17NR2E09_80 IN02_T17NR2E10_72
 IN02_T17NR2E15_00 IN02_T17NR2E16_08



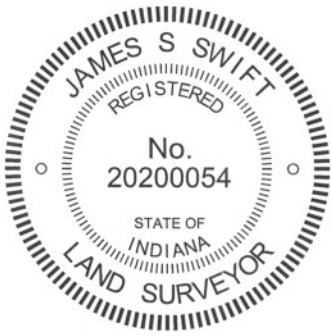
CORNER WITNESS DETAIL

SCALE 1" = 40'



- A - Mag nail in SE side power pole, 2' a.g., 118.3'
- B - Boone County witness mark, flush, 16.87'
- C - Mag nail in W side power pole, 2' a.g., 25.2'
- D - SW corner, decorative stone wall, 34.7'

The harrison monument was found in place.
 No specific descriptions of this corner were found in the BCS Surveyor's Record beyond the original establishment of the corner as a wood post in 1821. Marion County tie cards call for a reference to a stone at the corner in 1849. They call for the stone found 4 inches down in 1945 and a PK nail with washer over the stone in 1980. The Marion County Surveyor's Office excavated the corner in 1997, found the stone 6 inches down and set the harrison monument over the stone.
 The harrison monument over the stone was accepted as marking the corner.

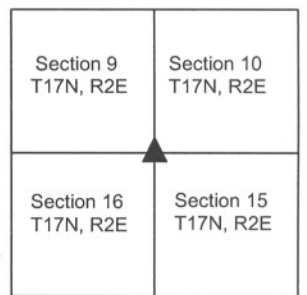


Kenneth E. Hedge
 Kenneth E. Hedge, County Surveyor

Eagle Twp
 Boone Cnty

James S. Swift
 James S. Swift, IN LS 20200054
 March 30, 2012

Pike Twp
 Marion Cnty



SECTION CORNER RECORD

SE 800-950

BOONE COUNTY SURVEYOR'S OFFICE

State Plane grid coordinates NAD83 (NSRS 2007):

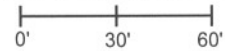
North: 1704241.35 East: 3175732.17 (U.S. survey feet)

Type of monument: Harrison, 4" disk 'Section Corner'

Depth: Three inches above adjacent ground

CORNER WITNESS DETAIL

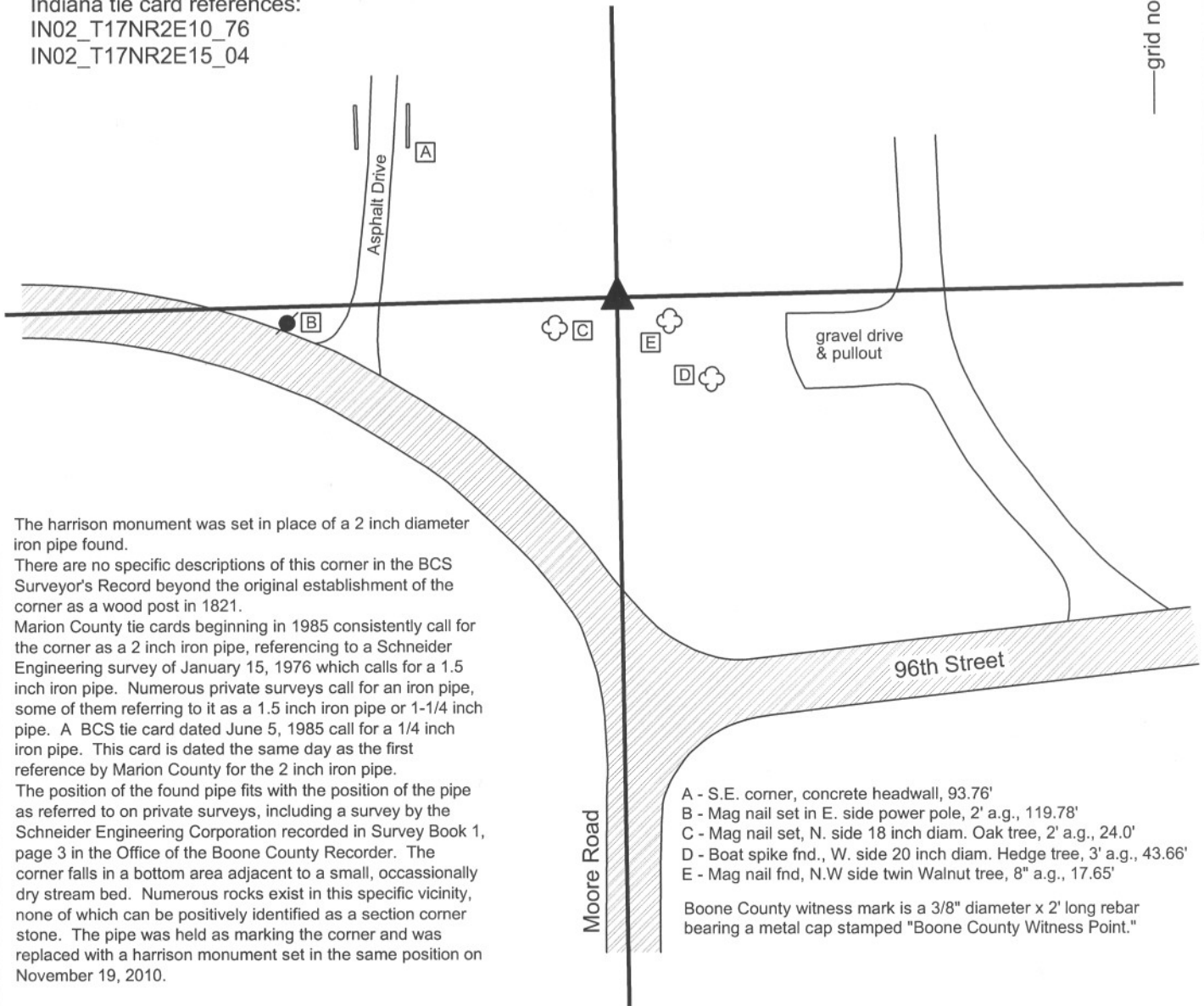
SCALE 1" = 60'



Indiana tie card references:

IN02_T17NR2E10_76

IN02_T17NR2E15_04



The harrison monument was set in place of a 2 inch diameter iron pipe found.

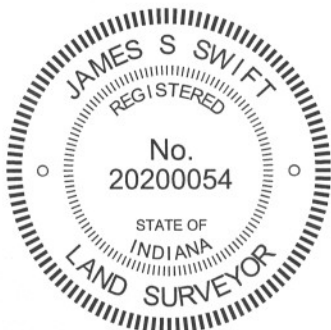
There are no specific descriptions of this corner in the BCS Surveyor's Record beyond the original establishment of the corner as a wood post in 1821.

Marion County tie cards beginning in 1985 consistently call for the corner as a 2 inch iron pipe, referencing to a Schneider Engineering survey of January 15, 1976 which calls for a 1.5 inch iron pipe. Numerous private surveys call for an iron pipe, some of them referring to it as a 1.5 inch iron pipe or 1-1/4 inch pipe. A BCS tie card dated June 5, 1985 call for a 1/4 inch iron pipe. This card is dated the same day as the first reference by Marion County for the 2 inch iron pipe.

The position of the found pipe fits with the position of the pipe as referred to on private surveys, including a survey by the Schneider Engineering Corporation recorded in Survey Book 1, page 3 in the Office of the Boone County Recorder. The corner falls in a bottom area adjacent to a small, occasionally dry stream bed. Numerous rocks exist in this specific vicinity, none of which can be positively identified as a section corner stone. The pipe was held as marking the corner and was replaced with a harrison monument set in the same position on November 19, 2010.

- A - S.E. corner, concrete headwall, 93.76'
- B - Mag nail set in E. side power pole, 2' a.g., 119.78'
- C - Mag nail set, N. side 18 inch diam. Oak tree, 2' a.g., 24.0'
- D - Boat spike fnd., W. side 20 inch diam. Hedge tree, 3' a.g., 43.66'
- E - Mag nail fnd, N.W side twin Walnut tree, 8" a.g., 17.65'

Boone County witness mark is a 3/8" diameter x 2' long rebar bearing a metal cap stamped "Boone County Witness Point."



Kenneth E. Hedge
 Kenneth E. Hedge, County Surveyor

James S. Swift
 James S. Swift, IN LS 20200054

March 30, 2012

Eagle Twp

Boone Cnty

Section 10
T17N, R2E

Marion Cnty

Section 15
T17N, R2E

SECTION CORNER RECORD

SE 800-1000

BOONE COUNTY SURVEYOR'S OFFICE

State Plane grid coordinates NAD83 (NSRS 2007):

North: 1704294.65 East: 3178400.49 (U.S. survey feet)

Type of monument: Harrison, 4" disk 'Section Corner'

Depth: flush with the adjacent ground.

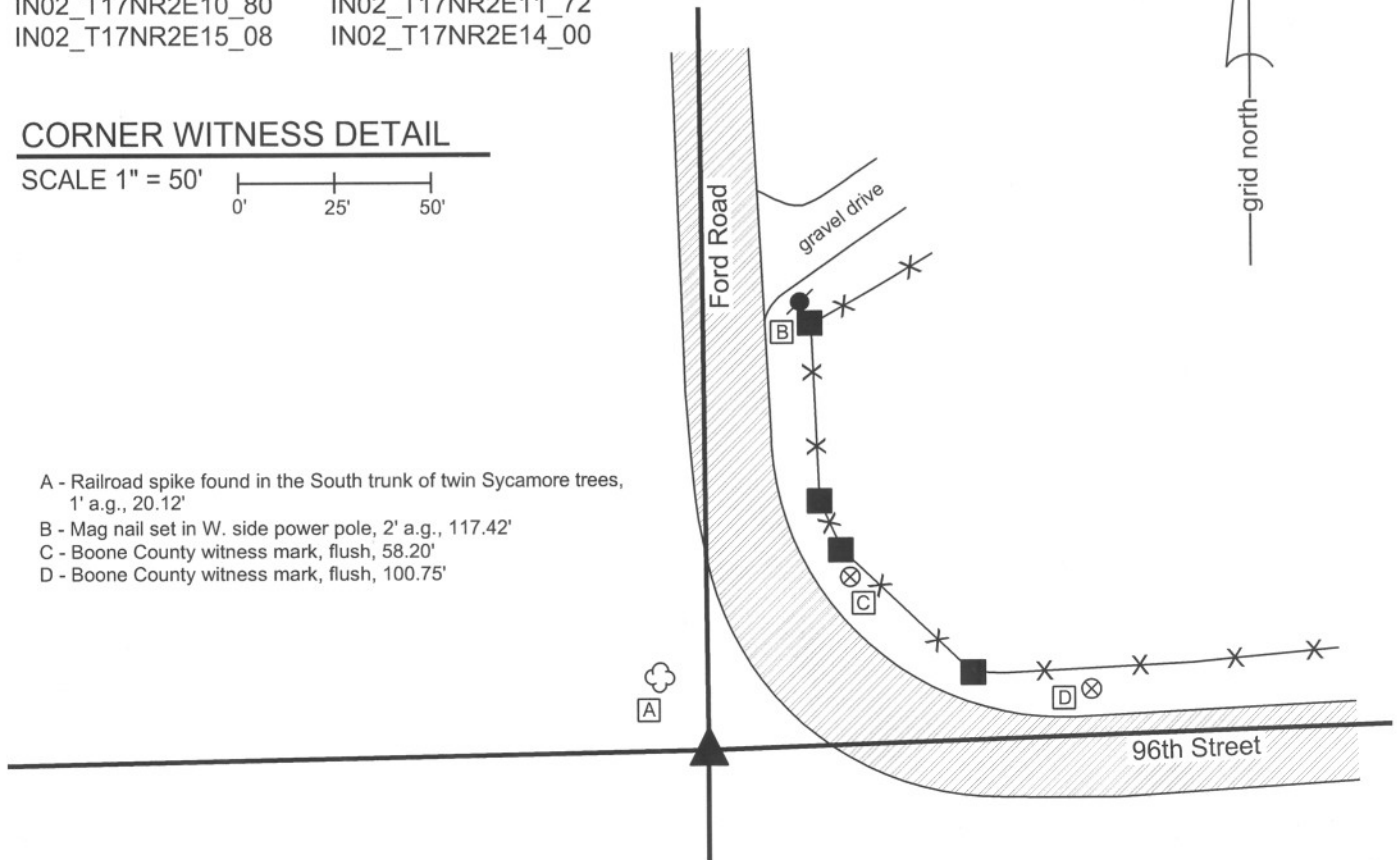
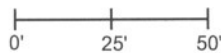
Indiana tie card references:

IN02_T17NR2E10_80 IN02_T17NR2E11_72

IN02_T17NR2E15_08 IN02_T17NR2E14_00

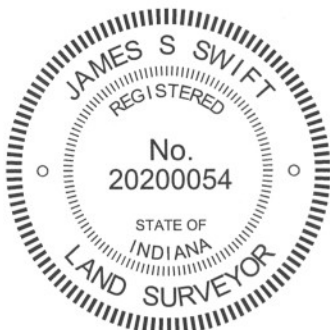
CORNER WITNESS DETAIL

SCALE 1" = 50'



- A - Railroad spike found in the South trunk of twin Sycamore trees, 1' a.g., 20.12'
- B - Mag nail set in W. side power pole, 2' a.g., 117.42'
- C - Boone County witness mark, flush, 58.20'
- D - Boone County witness mark, flush, 100.75'

The Harrison monument was set in the position of a 3/4 inch diameter iron pipe which formerly marked the corner. Tie sheets provided by the Marion County Surveyor's Office show pipes at two different locations for this corner. A tie card dated June 5, 1985 shows the corner as a 3/4 inch iron pipe with references to previous ties of 1975 and 1981. A subsequent tie card, dated September 20, 1994 shows the corner as a 1-1/2 inch iron pipe. Several surveys in the Boone County Recorder's Office show the corner as a 3/4 inch iron pipe. The 1-1/2 inch pipe is also shown on some recorded surveys. A survey by the Schneider Engineering Corporation dated December 12, 1988 and recorded in Survey Book 1, page 3 in the Boone County Recorder's Office shows the corner as a 3/4 inch iron pipe and shows a 1-1/4 inch pipe found 3.8 feet west. In 2007, an 1-1/2 inch diameter iron pipe was found with a rebar bearing a plastic cap driven into it. This pipe fit with the 1994 distance tie and was present until 2010. Reconstruction of the corner from the 1985 distance ties yielded a position 3.8 feet east of the found pipe. No monument was found at this position. Reconstruction of the position of the 3/4 inch pipe from information found on private surveys and relative to the corners to the north and west yielded the same position for the corner as the 1985 ties. It is clear that the 3/4 inch iron pipe had been accepted as the corner but was removed. The 1-1/2 inch pipe is 3.8 feet west. This monument has also been accepted as the corner for private surveys but is believed to be a newer monument. In 1988 both monuments were present. In cooperation and agreement with the Marion County Surveyor's office, the position of the 3/4 inch pipe was held as marking the corner. This position was monumented by a Harrison monument on November 12, 2010 and represents the corner as demonstrated on this document.



Kenneth E. Hedge
 Kenneth E. Hedge, County Surveyor

James S. Swift
 James S. Swift, IN LS 20200054
 March 30, 2012

Eagle Twp
Boone Cnty

Pike Twp
Marion Cnty

Eagle Township

Section 10 T17N, R2E	Section 11 T17N, R2E
Section 15 T17N, R2E	Section 14 T17N, R2E