

SECTION CORNER RECORD

NE 400-900

BOONE COUNTY SURVEYOR'S OFFICE

State Plane grid coordinates NAD83 (NSRS 2007):

North: 1767722.61 East: 3172196.32 (U.S. survey feet)

Type of monument: Harrison, 4" disk 'Section Corner'

Depth: Six inches below the gravel road surface.

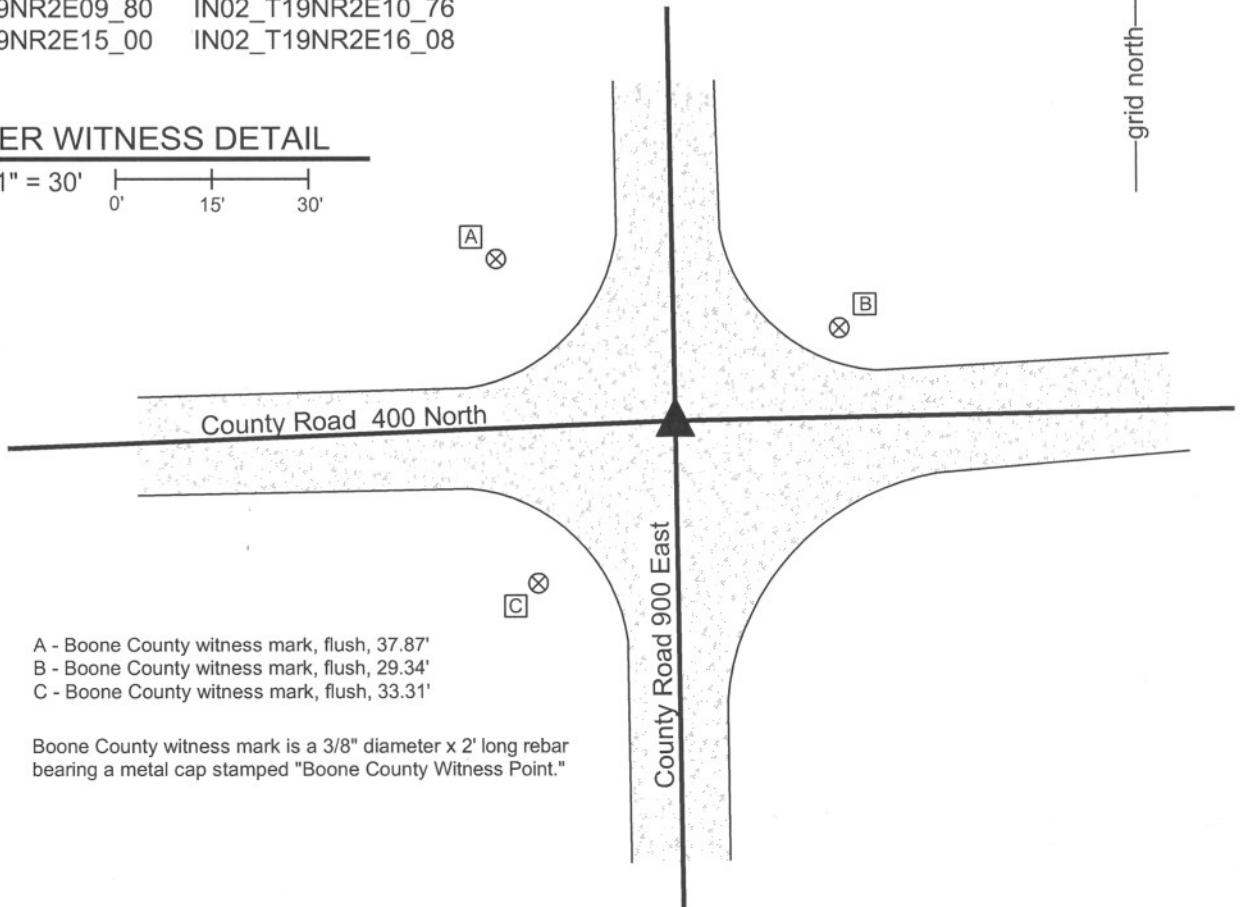
Indiana tie card references:

IN02_T19NR2E09_80 IN02_T19NR2E10_76

IN02_T19NR2E15_00 IN02_T19NR2E16_08

CORNER WITNESS DETAIL

SCALE 1" = 30'



- A - Boone County witness mark, flush, 37.87'
- B - Boone County witness mark, flush, 29.34'
- C - Boone County witness mark, flush, 33.31'

Boone County witness mark is a 3/8" diameter x 2' long rebar bearing a metal cap stamped "Boone County Witness Point."

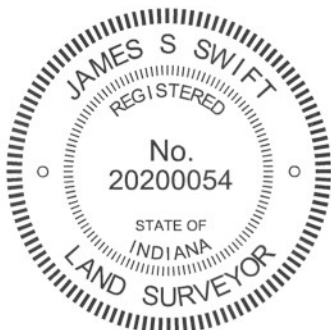
The harrison monument was set over a stone found.

A BCS record of December 24, 1867 states "Reestablished from stumps of both trees. Set Rock 21.17 by 15 in. Marked + on top." No recent BCS tie cards were found referencing this corner.

This corner was excavated on August 24, 2010. Prior to excavation a 5/8 inch diameter rebar was found at 3 inches deep, bent considerably.

Excavation revealed the record stone found at 22 inches deep. The stone is embedded in the clay layer below the road. With 12 inches exposed, the stone measures 14 inches E-W by 17 inches N-S and remains firmly embedded in the clay. The stone is of a soft sandstone type material and the top of the stone was marred during excavation. No specific marks were found on the stone, but a mark on the top of the stone may have been obliterated during excavation or at some previous time, given the softness of the material. The harrison monument was set over the top, center of the stone. The rebar, removed during excavation, had been 1.1 feet west and 0.7 foot south of this point. The source of the rebar is not known.

This corner was originally established as a wood post in July, 1821.



Kenneth E. Hedge
 Kenneth E. Hedge, County Surveyor

James S. Swift
 James S. Swift, IN LS 20200054
 July 25, 2011

Marion Township

Section 9 T19N, R2E	Section 10 T19N, R2E
Section 16 T19N, R2E	Section 15 T19N, R2E

PHOTOGRAPHIC DOCUMENTATION

Date of photography: August 24, 2010

View of the stone as first exposed.



View of the stone from above.



View of the stone from the east.



View from above the stone, looking west along County Road 400 North.



For details and documentation, refer to related sheet "Section Corner Record."

SECTION CORNER RECORD

NE 400-950

BOONE COUNTY SURVEYOR'S OFFICE

State Plane grid coordinates NAD83 (NSRS 2007):

North: 1767777.19 East: 3174850.54 (U.S. survey feet)

Type of monument: Harrison, 4" disk 'Section Corner'

Depth: six inches below the gravel road surface.

Indiana tie card references:

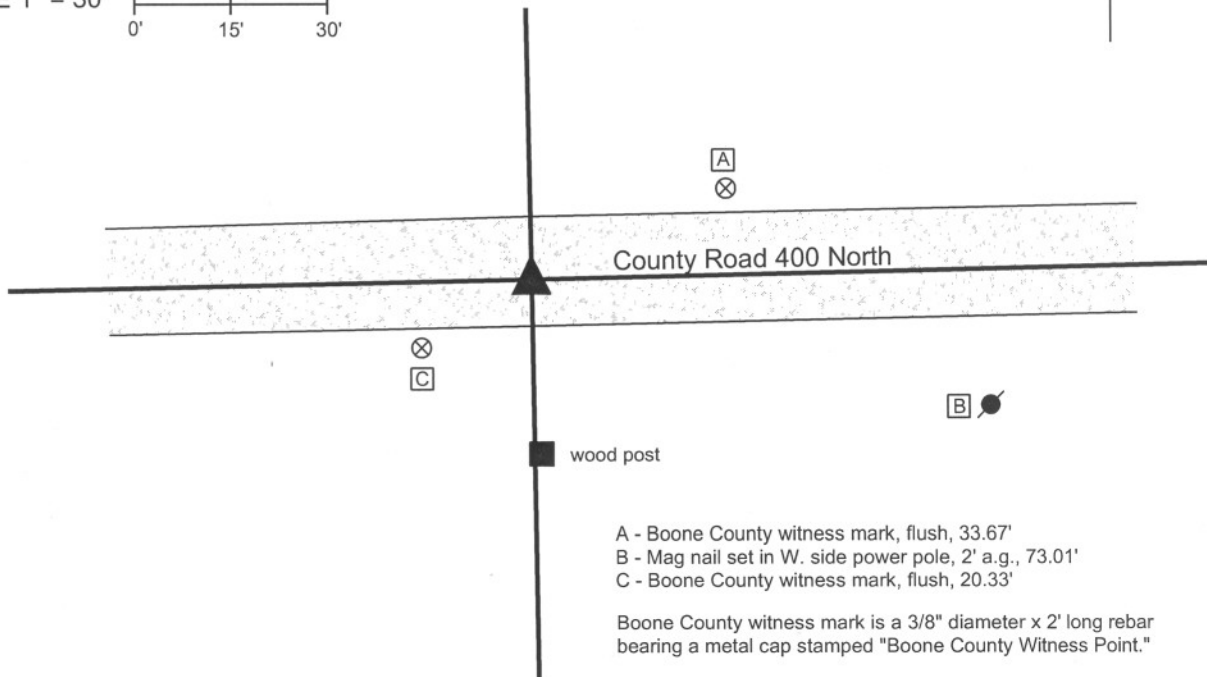
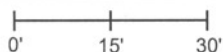
IN02_T19NR2E10_76

IN02_T19NR2E15_04



CORNER WITNESS DETAIL

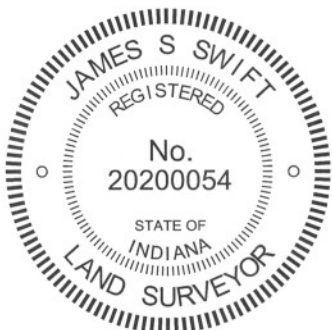
SCALE 1" = 30'



- A - Boone County witness mark, flush, 33.67'
- B - Mag nail set in W. side power pole, 2' a.g., 73.01'
- C - Boone County witness mark, flush, 20.33'

Boone County witness mark is a 3/8" diameter x 2' long rebar bearing a metal cap stamped "Boone County Witness Point."

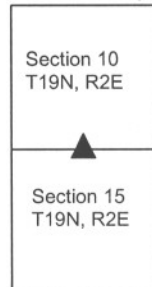
The harrison monument was set in place of a stone found. No references to this corner were found the in the old BCS Surveyor's Record. No recent tie cards were found for this corner. This corner was excavated on September 7, 2010. Prior to excavation, the apparent top of a stone was visible at the surface of the gravel road. Excavation revealed that the stone was 18 inches tall by 9 inches N-S by 7 inches E-W. Being at the surface, the stone has been hit by a road grader repeatedly and the top of the stone appeared to be broken. Part of an etched "+" appeared to be visible on the top, but was obscured by the apparent damage to the top of the stone. The road bed is only 7 inches thick at this corner. Hence the stone was embedded 11 inches into the clay layer below the road and protruded 7 inches out of the clay layer, into the road. The stone was leaning slightly to the north but it was not apparent whether the stone had been originally set that way or whether it had been disturbed by equipment such as a road grader. The stone was removed and a harrison monument was set in the position of the top of the stone as originally visible prior to excavation, though considerably deeper than the stone. This corner was originally established as a wood post in July, 1821.



Kenneth E. Hedge
 Kenneth E. Hedge, County Surveyor

James S. Swift
 James S. Swift, IN LS 20200054
 July 25, 2011

Marion Twp



PHOTOGRAPHIC DOCUMENTATION
Date of photography: September 7, 2010

View of the stone as first exposed.



The stone partially exposed.



View from the west, looking across the stone and east along County Road 400 North.



The stone more fully exposed.
View from the east and above.



The stone removed from the road bed.



For details and documentation, refer to related sheet "Section Corner Record."

SECTION CORNER RECORD

NE 400-1000

BOONE COUNTY SURVEYOR'S OFFICE

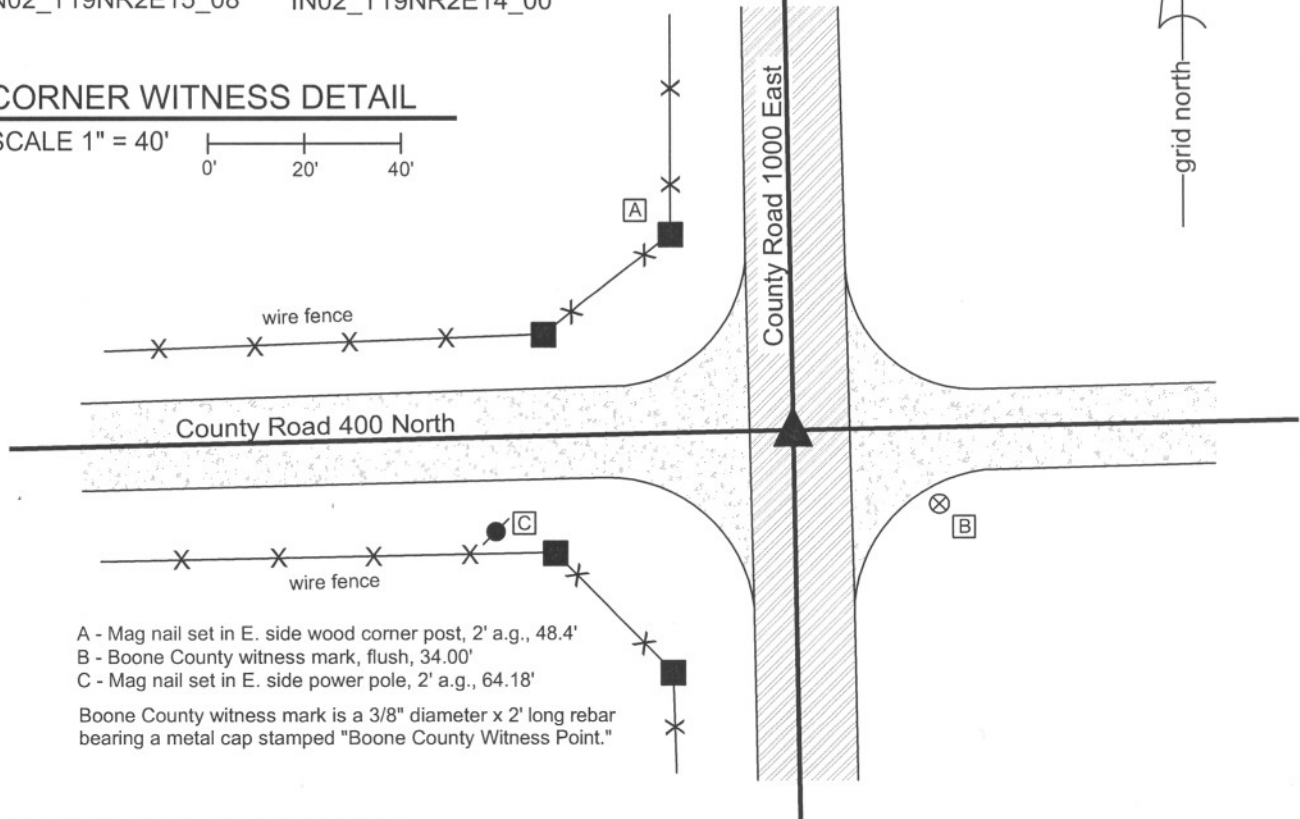
State Plane grid coordinates NAD83 (NSRS 2007):
 North: 1767835.66 East: 3177506.88 (U.S. survey feet)

Type of monument: Harrison, 4" disk 'Section Corner'
 Depth: One inch below adjacent road surface

Indiana tie card references:
 IN02_T19NR2E10_80 IN02_T19NR2E11_76
 IN02_T19NR2E15_08 IN02_T19NR2E14_00

CORNER WITNESS DETAIL

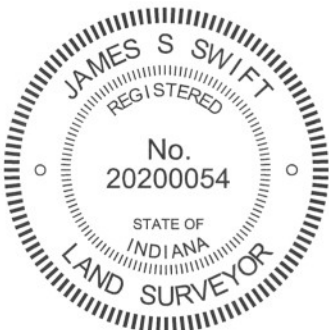
SCALE 1" = 40'
 0' 20' 40'



- A - Mag nail set in E. side wood corner post, 2' a.g., 48.4'
- B - Boone County witness mark, flush, 34.00'
- C - Mag nail set in E. side power pole, 2' a.g., 64.18'

Boone County witness mark is a 3/8" diameter x 2' long rebar bearing a metal cap stamped "Boone County Witness Point."

The harrison monument was set over a stone found.
 No references to this corner were found in the old BCS Surveyor's Record. No recent tie cards were found for this corner.
 This corner was excavated on August 27, 2010. Prior to excavation a nail was visible in a hole 1 inch below the surrounding asphalt. Excavation revealed a 1/2 inch diameter rebar found at 6 inches deep, 0.2 foot north of the nail. Further excavation revealed a stone found at 31 inches deep. The stone is fully embedded in the clay layer below the road with the top of the stone at the bottom of the road bed. The stone is 18 inches N-S by 12 inches E-W and approximately 8 inches tall, as measured on the northeast edge. The characteristic of this stone, embedded in the clay and horizontal, rather than vertical, fits the characteristics of other corner stones which appear to have been intentionally set but are either not mentioned in the BCS Surveyor's Record or are mentioned as "a stone that was set" (meaning the stone was found and appeared to be intentionally set). It is presumed that these stones were set by pioneer settlers or surveyors prior to the second half of the 1800s when the common practice was adopted by County Surveyors of setting the stones in a vertical orientation. The stone was left in place and the harrison monument was set over the approximate top, center of the stone. The nail, removed during excavation, had been 0.7 foot north and 1.2 feet east of this point.
 This corner was originally established as a wood post in July, 1821.



Kenneth E. Hedge
 Kenneth E. Hedge, County Surveyor

James S. Swift
 James S. Swift, IN LS 20200054
 July 25, 2011

Marion Township

Section 10 T19N, R2E	Section 11 T19N, R2E
Section 15 T19N, R2E	Section 14 T19N, R2E

PHOTOGRAPHIC DOCUMENTATION

Date of photography: August 27, 2010

View of the stone from above and east.



View of the stone from above and north.



View of the stone from above and west.



For details and documentation, refer to related sheet "Section Corner Record."

SECTION CORNER RECORD

NE 450-800

BOONE COUNTY SURVEYOR'S OFFICE

State Plane grid coordinates NAD83 (CORS96):

North: 1770174.20 East: 3166797.02 (U.S. survey feet)

Type of monument: Harrison, 4" disk 'Section Corner'

Depth: two inches above adjoining ground

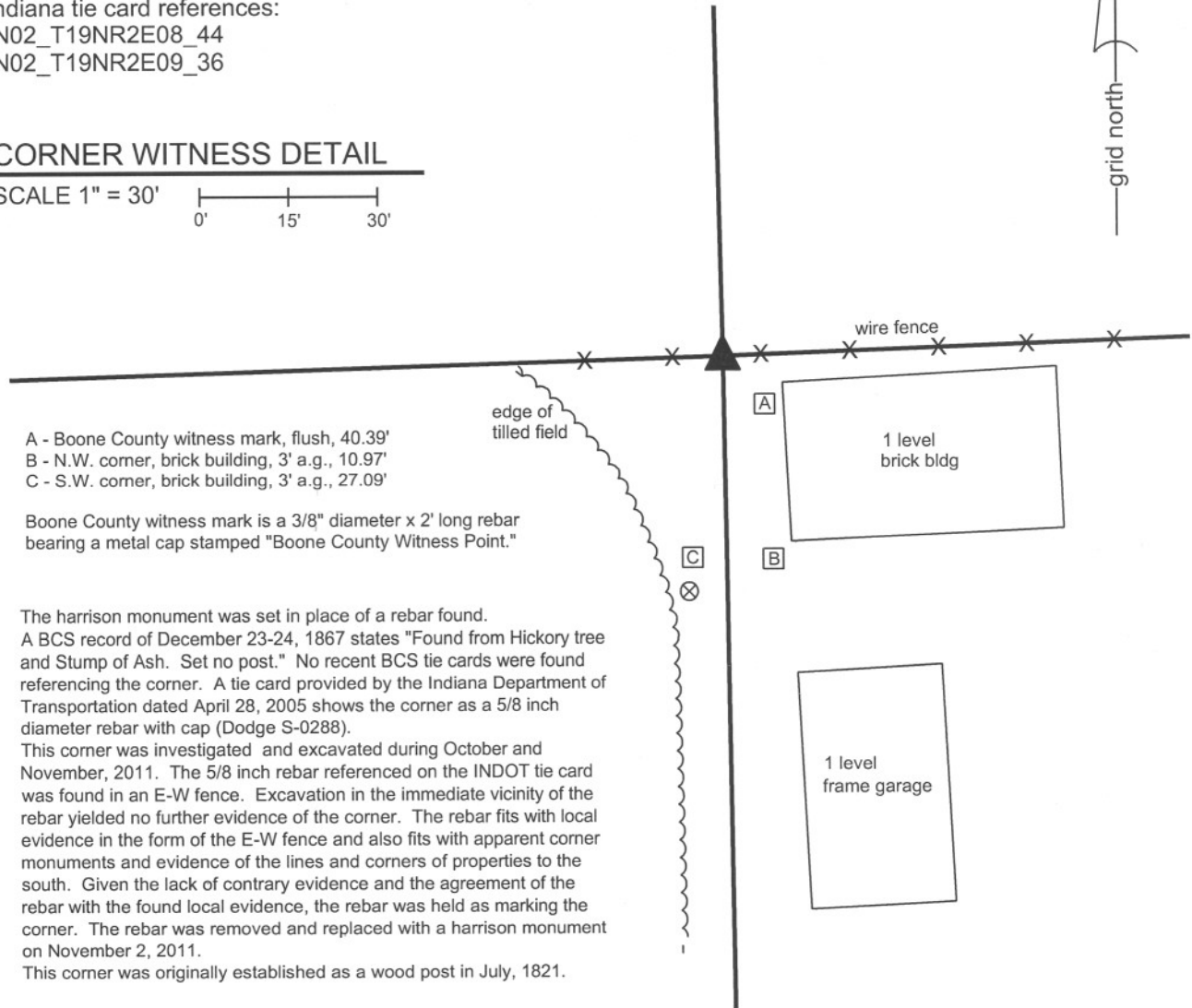
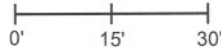
Indiana tie card references:

IN02_T19NR2E08_44

IN02_T19NR2E09_36

CORNER WITNESS DETAIL

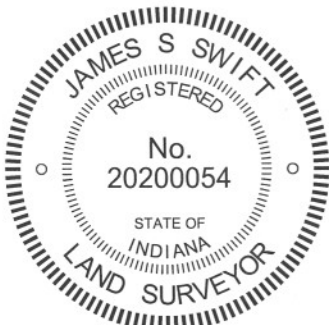
SCALE 1" = 30'



- A - Boone County witness mark, flush, 40.39'
- B - N.W. corner, brick building, 3' a.g., 10.97'
- C - S.W. corner, brick building, 3' a.g., 27.09'

Boone County witness mark is a 3/8" diameter x 2' long rebar bearing a metal cap stamped "Boone County Witness Point."

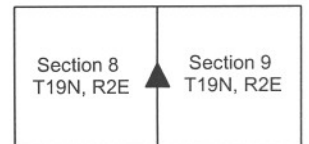
The harrison monument was set in place of a rebar found. A BCS record of December 23-24, 1867 states "Found from Hickory tree and Stump of Ash. Set no post." No recent BCS tie cards were found referencing the corner. A tie card provided by the Indiana Department of Transportation dated April 28, 2005 shows the corner as a 5/8 inch diameter rebar with cap (Dodge S-0288). This corner was investigated and excavated during October and November, 2011. The 5/8 inch rebar referenced on the INDOT tie card was found in an E-W fence. Excavation in the immediate vicinity of the rebar yielded no further evidence of the corner. The rebar fits with local evidence in the form of the E-W fence and also fits with apparent corner monuments and evidence of the lines and corners of properties to the south. Given the lack of contrary evidence and the agreement of the rebar with the found local evidence, the rebar was held as marking the corner. The rebar was removed and replaced with a harrison monument on November 2, 2011. This corner was originally established as a wood post in July, 1821.



Kenneth E. Hedge
 Kenneth E. Hedge, County Surveyor

James S. Swift
 James S. Swift, IN LS 20200054
 March 1, 2012

Marion Township



SECTION CORNER RECORD

NE 450-900

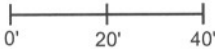
BOONE COUNTY SURVEYOR'S OFFICE

State Plane grid coordinates NAD83 (NSRS 2007):
North: 1770371.85 East: 3172147.95 (U.S. survey feet)

Type of monument: Harrison, 4" disk 'Section Corner'
Depth: six inches below adjacent gravel road surface

Indiana tie card references:
IN02_T19NR2E09_44
IN02_T19NR2E10_36

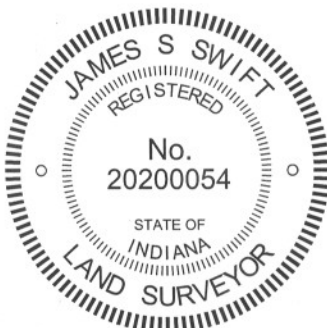
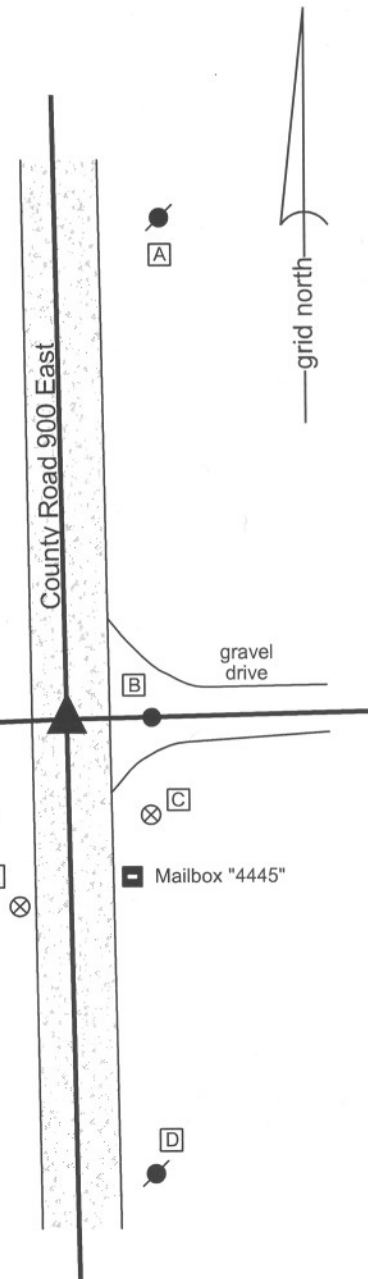
CORNER WITNESS DETAIL

SCALE 1" = 40' 

- A - Mag nail set in S. side power pole, 2' a.g., 104.77'
- B - Rebar with plastic cap "Dodge", flush, 17.75'
- C - Boone County witness mark, flush, 26.55'
- D - Mag nail set in N. side power pole, 2' a.g., 94.53'
- E - Boone County witness mark, flush, 40.20'

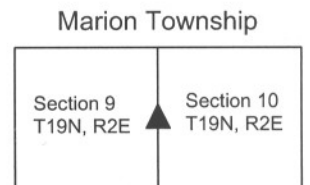
Boone County witness mark is a 3/8" diameter x 2' long rebar bearing a metal cap stamped "Boone County Witness Point."

The harrison monument was set over a stone found.
A BCS record of December 23-24, 1867 states "Reestablished. Set a Rock 20.14 by 8 in. Marked + on West side." No recent BCS tie cards were found referencing this corner.
This corner was excavated on March 22, 2011. Prior to excavation a 5/8 inch diameter rebar was found at 5 inches deep in the gravel road. The was bent, with the bend point being at 5 inches deep. Approximately 5 inches of the rebar existed beyond the bend, indicating that the rebar was once approximately flush with the surface of the gravel road. Excavation revealed the stone described in the 1867 record found at 16 inches deep. With the top 8 inches of the stone exposed it measures 12 inches N-S by 7 inches E-W and appears to be becoming slightly larger with increased depth. The west side of the stone was flat and vertical and an etched "+" mark was clearly visible on the west side, at a point 3 inches down from the top of the stone and in line with the top, high point of the stone. The stone was embedded in the clay layer below the road and remained entirely stable in the clay with the top 8 inches exposed. The stone was left in place and the harrison monument was set over the top, high point of the stone. The top 8 inches of the stone were encased in concrete. The rebar, removed during excavation, had been 1.3 feet east of the stone.
This corner was originally established as a wood post in July, 1821.



Kenneth E. Hedge
Kenneth E. Hedge, County Surveyor

James S. Swift
James S. Swift, IN LS 20200054
March 1, 2012, Revised April 30, 2012



PHOTOGRAPHIC DOCUMENTATION

Date of photography: March 22, 2011

View of the stone as found, showing the etched mark on the west side.



View of the stone from above.



View from the south looking across the stone and north along County Road 900 East.



View of the stone from above and west after the stone had dried in the open air briefly.



View of the stone from above shortly before the top was encased in concrete as part of the placement of the harrison monument above it.



For details and documentation, refer to related sheet "Section Corner Record."

SECTION CORNER RECORD

NE 500-800

BOONE COUNTY SURVEYOR'S OFFICE

State Plane grid coordinates NAD83 (CORS96):

North: 1772813.88 East: 3166741.30 (U.S. survey feet)

Type of monument: Harrison, 4" disk 'Section Corner'

Depth: One inch below adjacent road surface

Indiana tie card references:

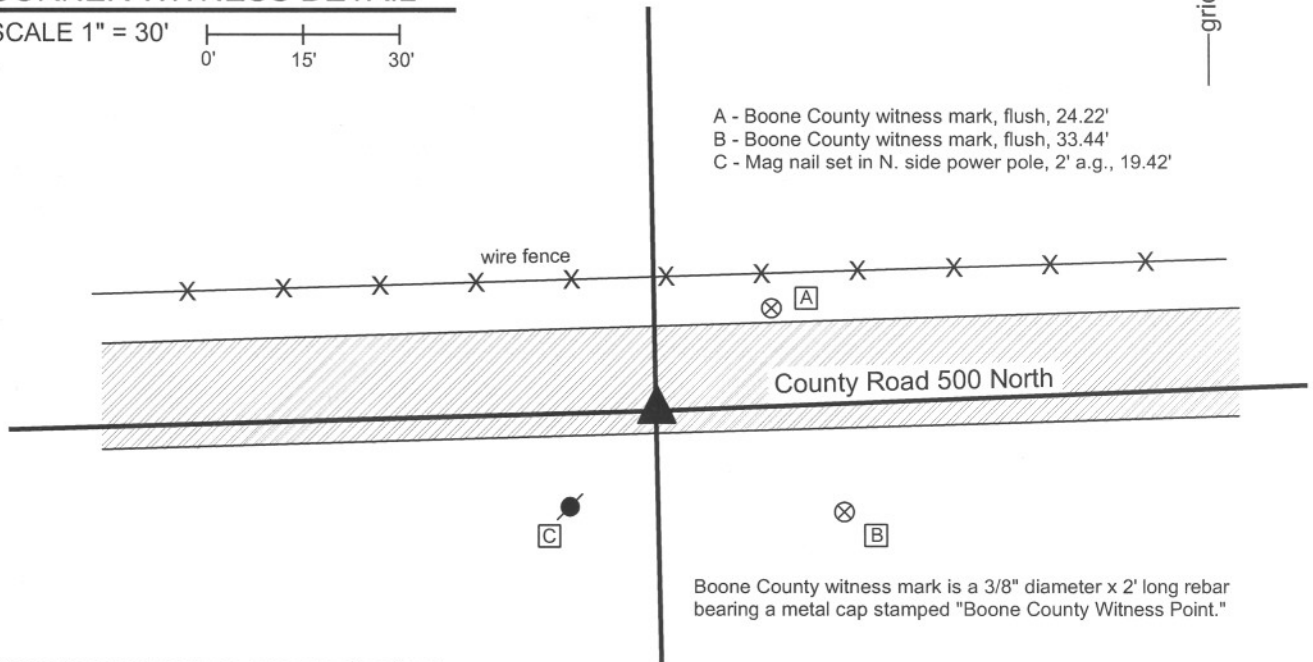
IN02_T19NR2E05_80 IN02_T19NR2E04_72

IN02_T19NR2E08_08 IN02_T19NR2E09_00



CORNER WITNESS DETAIL

SCALE 1" = 30'
0' 15' 30'



- A - Boone County witness mark, flush, 24.22'
- B - Boone County witness mark, flush, 33.44'
- C - Mag nail set in N. side power pole, 2' a.g., 19.42'

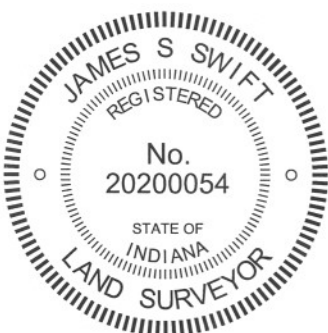
Boone County witness mark is a 3/8" diameter x 2' long rebar bearing a metal cap stamped "Boone County Witness Point."

The harrison monument was set over a stone found.

A BCS record of April 22-24, 1884 states with respect to this and the corner 1/4 mile south "Points found by measure." The corner is also specifically noted in a record of Aug. 15, 1901, though the monument marking the corner is not described in this record. A BCS tie card dated August 11, 1974 states "No Stone Found." A BCS tie card dated January 18, 1994 shows the corner as a "buggy axel". A tie card provided by the Indiana Department of Transportation, dated April 27, 2005 shows the corner as a mag nail.

This corner was excavated on September 26, 2011. Prior to excavation a mag nail was found per the INDOT tie card. Excavation revealed a 1 inch diameter iron pin found at 8 inches deep, below the mag nail. This monument is believed to represent the "buggy axel" shown for in the 1994 tie card. The iron pin was removed and determined to be a hollow iron pipe, 24 inches long, with a solid end which had been at the top. The source of this monument is not known. It does not match the characteristics of other monuments found associated with 1974 tie cards. Further excavation revealed a stone found at 13 deep. With the top 12 inches of the stone exposed, it measured 6 inches N-S by 5 inches E-W. It is estimated that the total height of the stone was 15-17 inches. The stone was vertical, oriented in cardinal directions and embedded in the clay layer below the road, with the top of the stone at the bottom of the road bed. The stone was accepted as the best available evidence of the corner. The stone was left in place, with the top 3 inches encased in concrete and the harrison monument was set directly over the top, center of the stone. The mag nail and iron pipe, both removed during excavation, had been 1.8 feet north and 2.3 feet west of the stone.

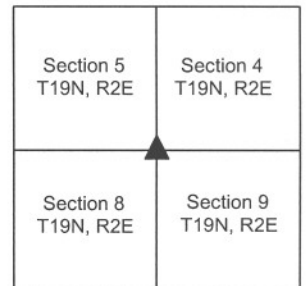
This corner was originally established as a wood post in July, 1821.



Kenneth E. Hedge
Kenneth E. Hedge, County Surveyor

James S. Swift
James S. Swift, IN LS 20200054
March 1, 2012

Marion Township



PHOTOGRAPHIC DOCUMENTATION

Date of photography: September 26, 2011

View of the stone as first exposed.



View of the stone from the west.



View of the stone from the north.



For details and documentation, refer to related sheet "Section Corner Record."

SECTION CORNER RECORD

NE 500-850

BOONE COUNTY SURVEYOR'S OFFICE

State Plane grid coordinates NAD83 (CORS96):

North: 1772920.34 East: 3169415.41 (U.S. survey feet)

Type of monument: Harrison, 4" disk 'Section Corner'

Depth: one inch below adjacent road surface

Indiana tie card references:

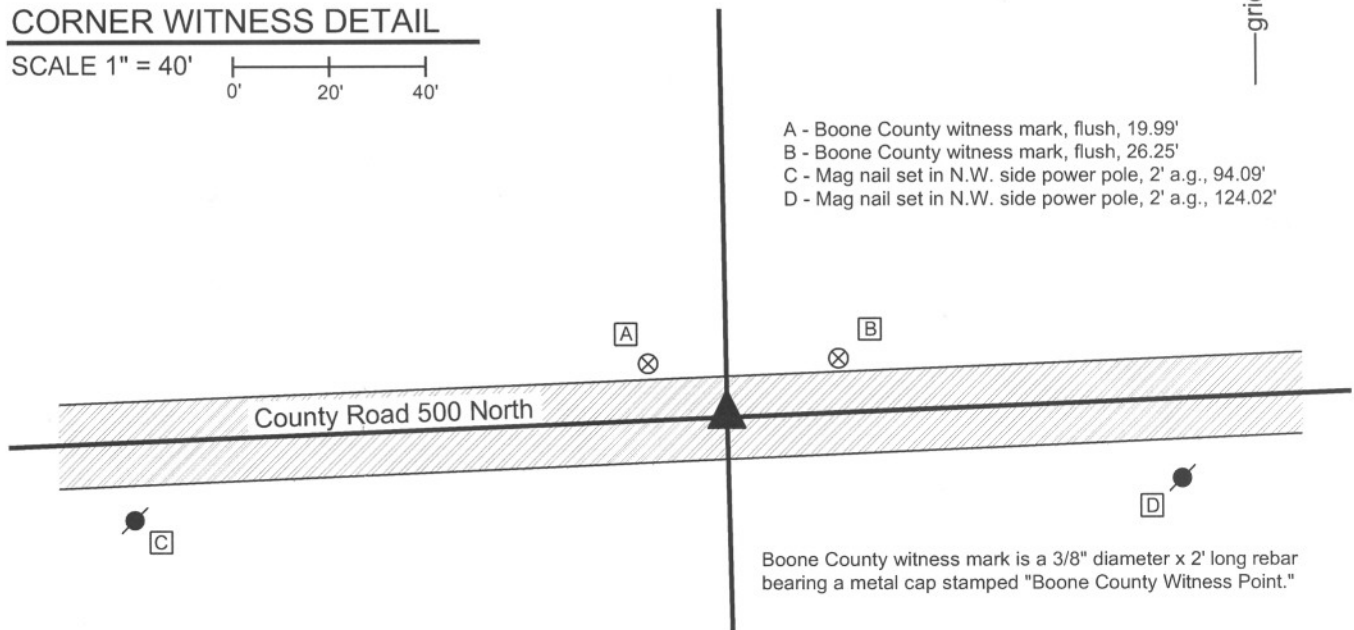
IN02_T19NR2E04_76

IN02_T19NR2E09_04



CORNER WITNESS DETAIL

SCALE 1" = 40'



- A - Boone County witness mark, flush, 19.99'
- B - Boone County witness mark, flush, 26.25'
- C - Mag nail set in N.W. side power pole, 2' a.g., 94.09'
- D - Mag nail set in N.W. side power pole, 2' a.g., 124.02'

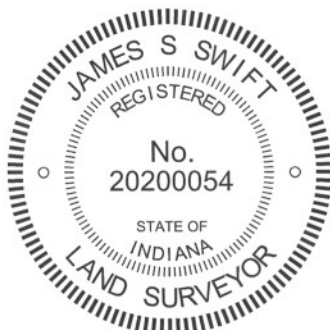
Boone County witness mark is a 3/8" diameter x 2' long rebar bearing a metal cap stamped "Boone County Witness Point."

The harrison monument was set over a stone found.

A BCS record of December 23-24, 1867 states Reestablished from Oak. Set a Rock 24.10.8 in. Marked + on side. Chopped Mark out of Oak." A BCS tie card dated July 16, 1974 states "No Stone."

This corner was excavated on September 23, 2011. Prior to excavation, a mag nail was found at the surface. Excavation revealed a 1/2 inch diameter rebar found at 6 inches deep. The rebar was bent, with 3 inches of the rebar pointed north and the remainder vertical. The vertical shaft of the rebar was approximately 0.25 foot west of the mag nail. Excavation also revealed a vertical section of railroad rail found at 8 inches deep. The rail was 0.4 foot east and 0.7 foot north of the position of the mag nail originally found at the surface. Both the 1/2 inch diameter rebar and the railroad rail represent the types of monuments set by BCS field crews during the summer of 1974. A wood stake was found at 10 inches deep, 1.1 foot west of the rail. Further excavation revealed a stone found at 10 inches deep. The stone was 1 foot west and 0.75 foot north of the rail. The wood stake had been situated along the south edge of the stone. With the top 10 inches of the stone exposed, the stone measures 10 inches E-W by 7 inches N-S. The stone is vertical and embedded in the clay layer below the road, with the top of the stone at the bottom of the road bed. The stone is of a rough surface. A vaguely visible mark was found on the south side, though positive identification of the mark is difficult due to the rough surface of the stone. The stone extends well below the exposed 10 inches, but the full height was not determined. This stone was accepted as being the stone described in the 1867 record and was held as marking the corner. The top 4 inches of the stone were embedded in concrete and the harrison monument was set over the top high point and top center of the stone. This point is 0.6 foot west and 1.4 feet north of the position of the mag nail as originally found and 0.75 feet north and 1 foot west of the rail as found. All monuments other than the stone were removed during excavation.

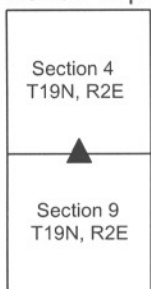
This corner was originally established as a wood post in July, 1821.



Kenneth E. Hedge
Kenneth E. Hedge, County Surveyor

James S. Swift
James S. Swift, IN LS 20200054
March 1, 2012

Marion Twp



PHOTOGRAPHIC DOCUMENTATION

Date of photography: September 23, 2011

View of the stone and rail as first exposed.



View of the stone and rail more fully exposed.

View from the west.



Close-up of the stone.



View of the stone after the rail was removed.



For details and documentation, refer to related sheet "Section Corner Record."

SECTION CORNER RECORD

BOONE COUNTY SURVEYOR'S OFFICE

NE 500-900

State Plane grid coordinates NAD83 (CORS96):

North: 1773024.11 East: 3172095.34 (U.S. survey feet)

Type of monument: Harrison, 4" disk 'Section Corner'

Depth: One inch below adjacent road surface

Indiana tie card references:

IN02_T19NR2E04_80 IN02_T19NR2E03_72

IN02_T19NR2E09_08 IN02_T19NR2E10_00

CORNER WITNESS DETAIL

SCALE 1" = 40'



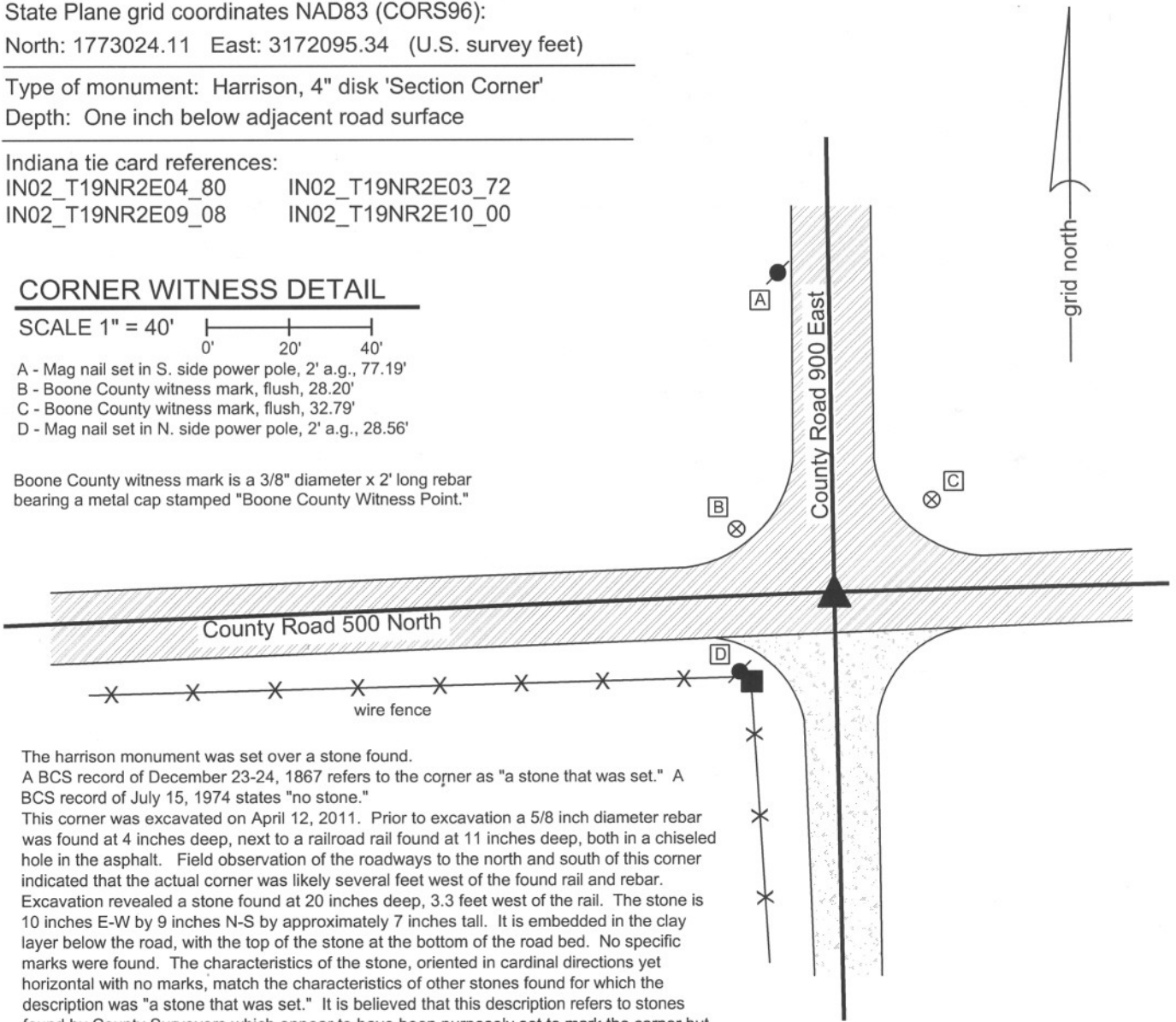
A - Mag nail set in S. side power pole, 2' a.g., 77.19'

B - Boone County witness mark, flush, 28.20'

C - Boone County witness mark, flush, 32.79'

D - Mag nail set in N. side power pole, 2' a.g., 28.56'

Boone County witness mark is a 3/8" diameter x 2' long rebar bearing a metal cap stamped "Boone County Witness Point."



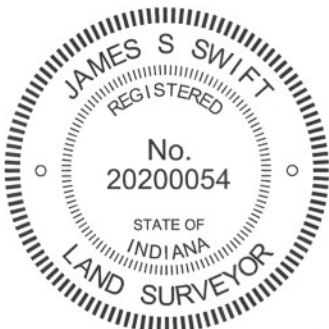
The harrison monument was set over a stone found.

A BCS record of December 23-24, 1867 refers to the corner as "a stone that was set." A BCS record of July 15, 1974 states "no stone."

This corner was excavated on April 12, 2011. Prior to excavation a 5/8 inch diameter rebar was found at 4 inches deep, next to a railroad rail found at 11 inches deep, both in a chiseled hole in the asphalt. Field observation of the roadways to the north and south of this corner indicated that the actual corner was likely several feet west of the found rail and rebar.

Excavation revealed a stone found at 20 inches deep, 3.3 feet west of the rail. The stone is 10 inches E-W by 9 inches N-S by approximately 7 inches tall. It is embedded in the clay layer below the road, with the top of the stone at the bottom of the road bed. No specific marks were found. The characteristics of the stone, oriented in cardinal directions yet horizontal with no marks, match the characteristics of other stones found for which the description was "a stone that was set." It is believed that this description refers to stones found by County Surveyors which appear to have been purposely set to mark the corner but which were not set by the County Surveyors. It is likely that this stone was set by pioneer landowners who marked the corner, perhaps upon removal of the original wood post. The position of the stone fits well with local evidence in the form of the county roads extending N,S,E,W from the corner. The stone was left in place and a harrison monument was set over the top, center of the stone. The rebar and railroad rail were removed during excavation.

This corner was originally established as a wood post in July, 1821.



Kenneth E. Hedge
Kenneth E. Hedge, County Surveyor

James S. Swift
James S. Swift, IN LS 20200054
March 1, 2012

Marion Township

Section 4 T19N, R2E	Section 3 T19N, R2E
Section 9 T19N, R2E	Section 10 T19N, R2E

PHOTOGRAPHIC DOCUMENTATION

Date of photography: April 12, 2011

View of the stone from the east.



View of the stone from above.



View of the stone from the south.



View from the south, looking north along County Road 900 East. The picture below was taken from the same N-S/E-W orientation as the picture to the left, but with the camera raised to capture the view of the road to the north.



For details and documentation, refer to related sheet "Section Corner Record."