

# SECTION CORNER RECORD

NW 400-300

## BOONE COUNTY SURVEYOR'S OFFICE

State Plane grid coordinates NAD83 (CORS96):

North: 1766697.91 East: 3108886.25 (U.S. survey feet)

Type of monument: 5/8" rebar with metal cap stamped "Boone County Surveyor"

Depth: Flush with adjacent ground

Indiana tie card references:

IN02\_T19NR1W09\_80 IN02\_T19NR1W10\_72

IN02\_T19NR1W16\_08 IN02\_T19NR1W15\_00

### CORNER WITNESS DETAIL

SCALE 1" = 40'



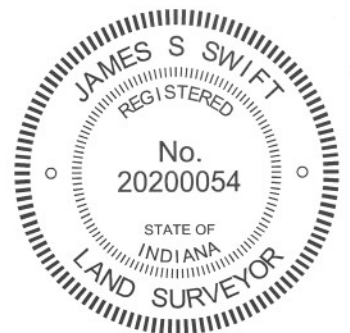
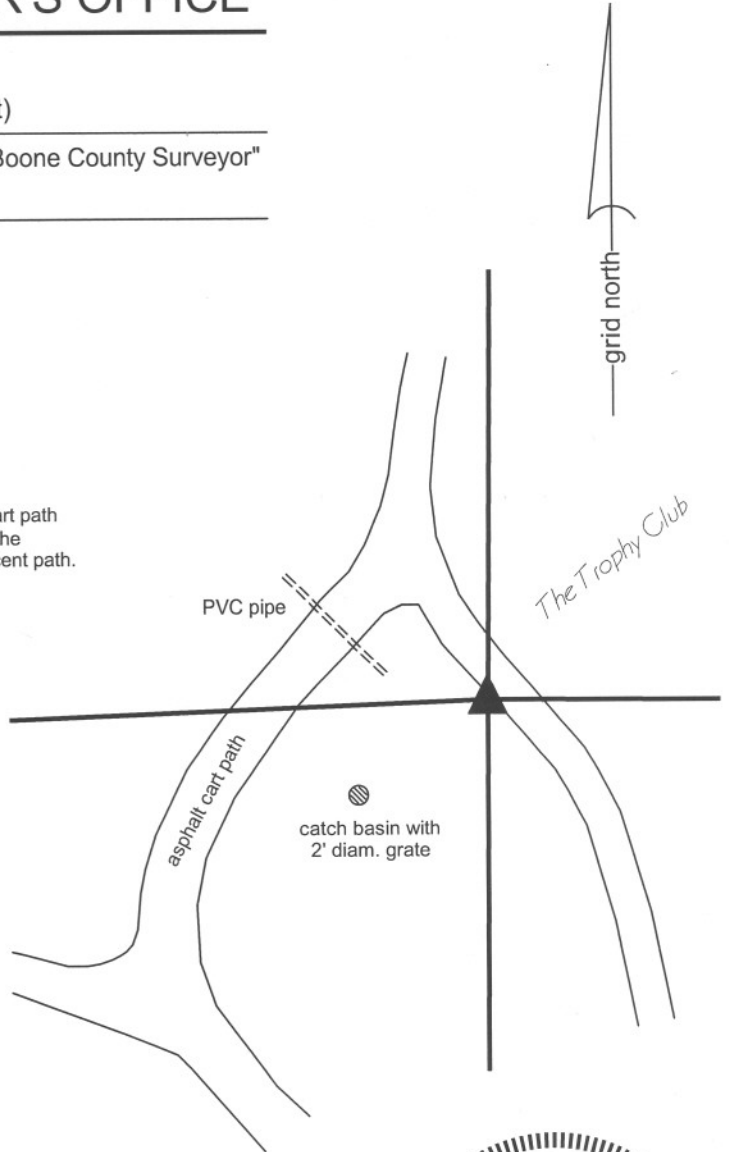
Note: the capped rebar is approximately 1 foot west of the asphalt golf cart path and approximately 25 feet southeasterly along the edge of the path from the intersection of the south edge of the path with the south edge of the adjacent path. Additional, specific distance ties are not provided.

The rebar was set in a computed position.

A BCS record of October 12, 1912 states "located from line tree 5.86 [chains] north of corner. Drove stake." The corner is also included in a metes and bounds description written out in the BCS Surveyor's Record, dated June 7, 1943. This description places the corner at 2648 feet south of the east quarter corner of section 9. The description also places the east quarter corner at 2649 feet east of the center of section. The east quarter corner (see documentation for corner NW 450-300) was established per a stone found in 1970. The center of section (NW 450-350) has not been excavated, though a nail at the county road intersection is believed to be set over the top of a railroad rail slanted over a stone, per BCS records of 1970. The distance between the east quarter corner and the nail believed to be marking the center of section agrees precisely with the 1943 distance, within uncertainties of significant digits.

No monumentation or evidence of the subject corner was found in the immediate vicinity of the expected position thereof. A well established, ancient fence was found to the north, beginning approximately 350 feet north of the corner. The subject corner was established at 2648.13 feet from the east quarter corner on a line prolonged from the east quarter corner south along the existing, ancient fence. Establishing the corner as such holds the best available evidence of the section line in the form of the fence, holds the distance from the 1943 description and honors the same approach to establishing the corner as the 1912 corner record. The precise distance of 2648.13 feet, rather than 2648.0, was borrowed from a survey by C. David Helton dated June 15, 1998 and recorded as instrument 9809245 in the Office of the Boone County Recorder. The position of the corner as defined by the fence prolonged to the south (i.e. the approach held to compute the position of this corner) falls approximately 1.7 feet west of the position of the corner held by Helton, as computed from remote points shown on that survey.

This corner was originally established as a wood post in May, 1829.



*Kenneth E. Hedge*  
 \_\_\_\_\_  
 Kenneth E. Hedge, County Surveyor

*James S. Swift*  
 \_\_\_\_\_  
 James S. Swift, IN LS 20200054  
 January 15, 2013

Washington Township

Center Township

Section 9 T19N, R1W	Section 10 T19N, R1W
Section 16 T19N, R1W	Section 15 T19N, R1W

# SECTION CORNER RECORD

NW 400-400

## BOONE COUNTY SURVEYOR'S OFFICE

State Plane grid coordinates NAD83 (2011):

North: 1766617.92 East: 3103604.40 (U.S. survey feet)

Type of monument: Harrison, 4" disk 'Section Corner'

Depth: One inch below adjacent road surface

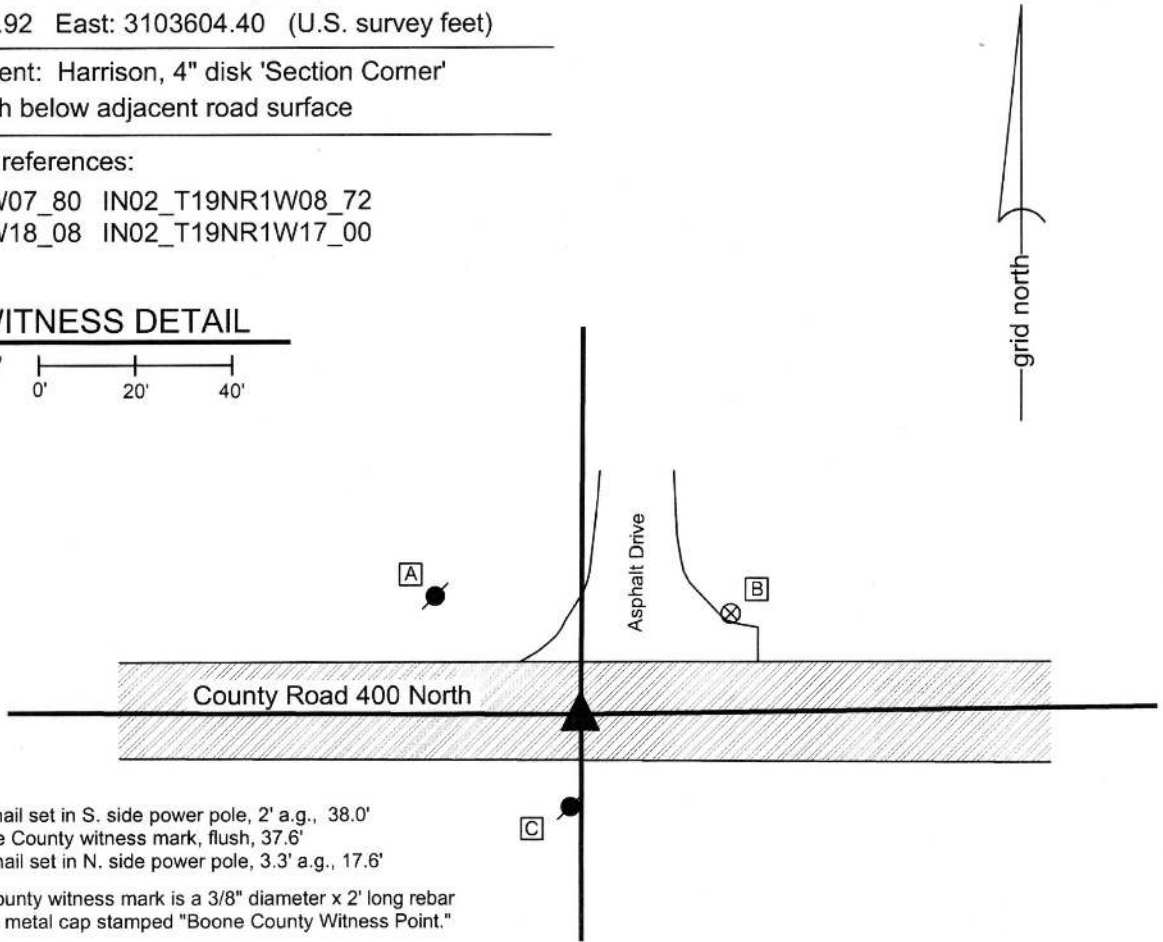
Indiana tie card references:

IN02\_T19NR1W07\_80 IN02\_T19NR1W08\_72

IN02\_T19NR1W18\_08 IN02\_T19NR1W17\_00

### CORNER WITNESS DETAIL

SCALE 1" = 40' 0' 20' 40'



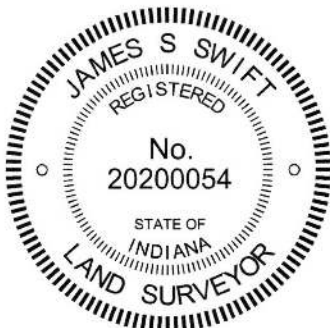
- A - Mag nail set in S. side power pole, 2' a.g., 38.0'
- B - Boone County witness mark, flush, 37.6'
- C - Mag nail set in N. side power pole, 3.3' a.g., 17.6'

Boone County witness mark is a 3/8" diameter x 2' long rebar bearing a metal cap stamped "Boone County Witness Point."

The Harrison monument was set in place of a vertical section of railroad rail found.

No specific descriptions of this corner were found in the BCS Surveyor's Record, though the corner is mentioned as the terminal point for measurements in records of 1837 and 1859. A BCS tie card dated March 14, 1970 states "no stone."

This corner was excavated on June 26, 2015. Prior to excavation, a Mag nail was found at the surface of the road. Excavation revealed a vertical section of railroad rail at 12 inches deep, slightly N.W. of the nail. Further excavation of an area extending 3 feet north, 2 feet south, 2.5 feet east and 2.5 feet west of the nail and rail revealed no further evidence of the corner. The bottom of the road bed was found at 16 to 18 inches deep. Excavation was performed to approximately 20 inches. Evidence of an old drainage tile was found at the east edge of the area of excavation, indicating some previous disruption to the ground in the vicinity of the corner. Numerous small rocks were found in the base layer of the road but none of them had the characteristics of a specifically set corner stone. Though the 1970 tie card made no mention of the railroad rail, a pencil notation put in the BCS Surveyor's record from the same date (3/14/1970) states "No stone - set railroad rail." The rail was held as marking the corner. The rail was removed during excavation and a Harrison monument was set in the position of the rail. The Mag nail had been 0.2 foot south and 0.2 foot east of this point. This corner was originally established as a wood post in 1829.



*Kenneth E. Hedge*  
 Kenneth E. Hedge, County Surveyor

*James S. Swift*  
 James S. Swift, IN LS 20200054  
 March 24, 2016

Washington Township

Section 8 T19N, R1W	Section 9 T19N, R1W
Section 17 T19N, R1W	Section 16 T19N, R1W

# SECTION CORNER RECORD

## BOONE COUNTY SURVEYOR'S OFFICE

NW 450-300

State Plane grid coordinates NAD83 (CORS96):  
 North: 1769345.95 East: 3108909.04 (U.S. survey feet)

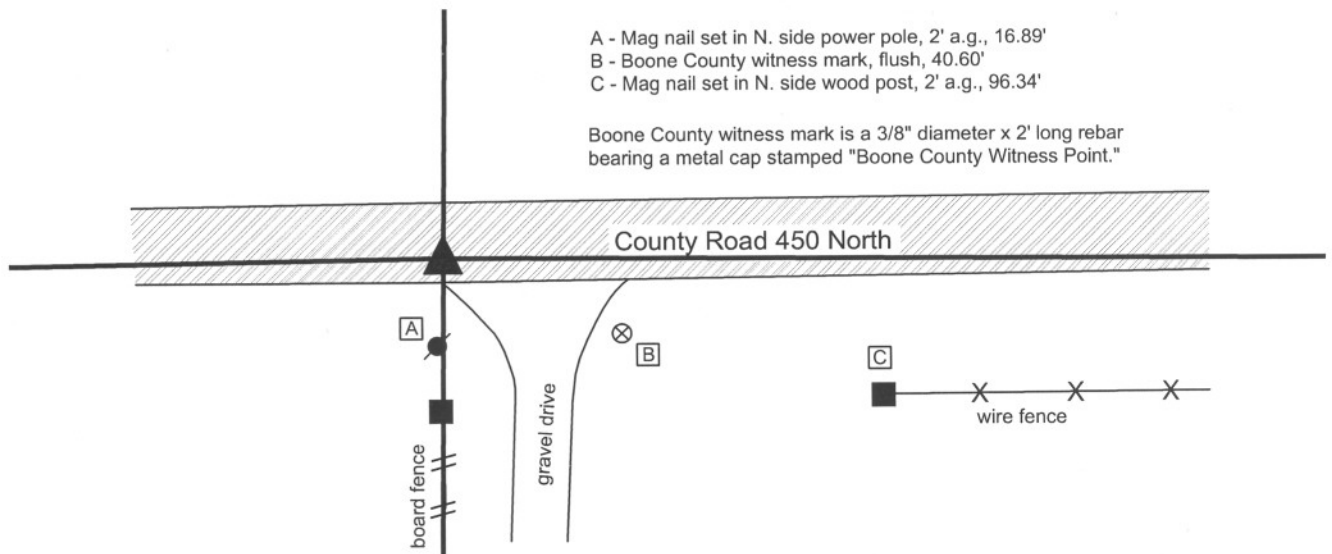
Type of monument: Harrison, 4" disk 'Section Corner'  
 Depth: Flush with adjacent road surface

Indiana tie card references:  
 IN02\_T19NR1W09\_44  
 IN02\_T19NR1W10\_36



### CORNER WITNESS DETAIL

SCALE 1" = 40'



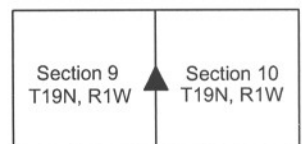
The harrison monument was set over a vertical section of railroad rail found.  
 No specific descriptions of this corner were found in the BCS Surveyor's record, though it is mentioned in a metes and bounds description written out in said record, dated 1943. A BCS tie card dated August 1970 states "stone located. Set rail."  
 The railroad rail was found 11 inches deep in a hole in the asphalt. It is known that is was a common practice for BCS field crews in 1970 to remove a stone, when found, and replace it with a rail. The reference on the tie card to "stone located. Set Rail" is accepted as confirmation that the stone was most likely removed. The rail was accepted as marking the corner. The rail was left in place and a harrison monument was set directly over the top of the rail on May 3, 2012.  
 This corner was originally established as a wood post in May, 1829.



*Kenneth E. Hedge*  
 Kenneth E. Hedge, County Surveyor

*James S. Swift*  
 James S. Swift, IN LS 20200054  
 January 15, 2013

Washington Township



# SECTION CORNER RECORD

## BOONE COUNTY SURVEYOR'S OFFICE

NW 500-350

State Plane grid coordinates NAD83 (2011):

North: 1771942.72 East: 3106276.37 (U.S. survey feet)

Type of monument: Harrison, 4" disk 'Section Corner'

Depth: One inch below adjacent road surface

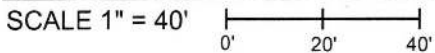
Indiana tie card references:

IN02\_T19NR1W04\_76

IN02\_T19NR1W09\_04

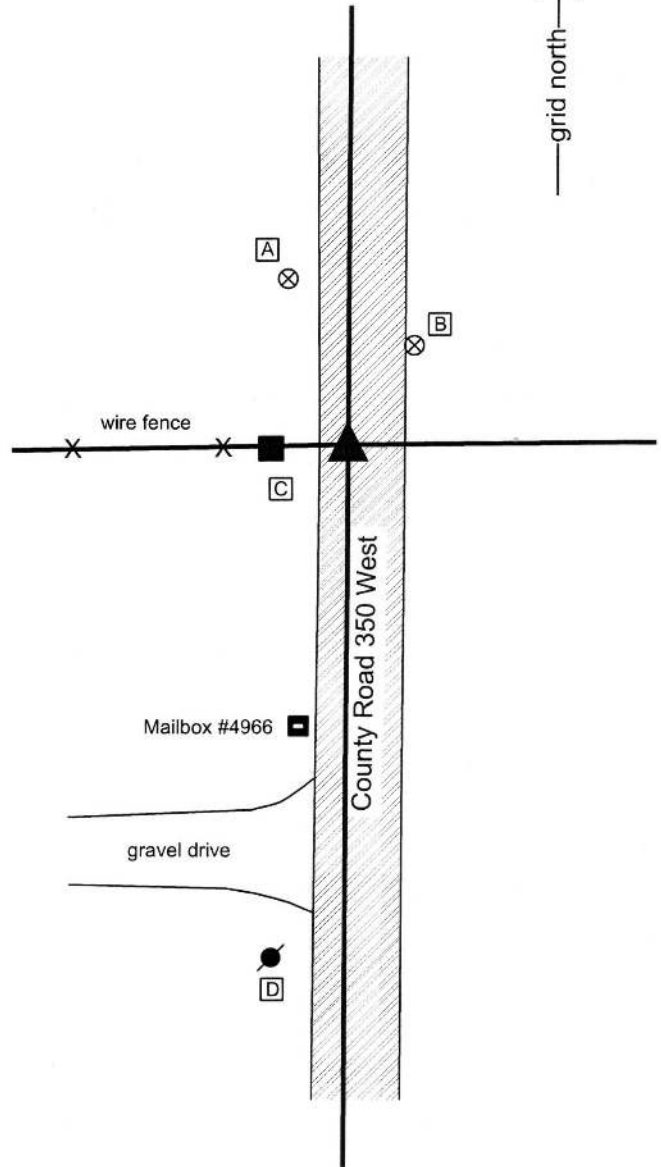


### CORNER WITNESS DETAIL



- A - Boone County witness mark, flush, 36.7'
- B - Boone County witness mark, flush, 24.9'
- C - Mag nail set in E. side wood post, 2' a.g., 16.4'
- D - Mag nail set in E. side power pole, 2' a.g., 107.3'

Boone County witness mark is a 3/8" diameter x 2' long rebar bearing a metal cap stamped "Boone County Witness Point."

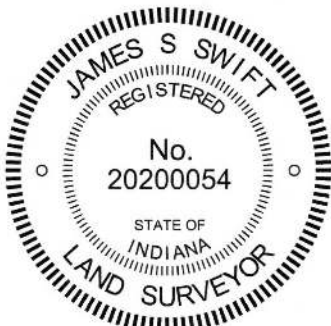


The Harrison monument was set over a stone found. No specific descriptions of this corner were found in the BCS Surveyor's Record, though the corner is mentioned as the terminal point for measurements in records of 1839 and 1852, indicating that some form of monument was likely present when those records were made.

A BCS tie card dated August, 1970 states "No Stone."

This corner was excavated on June 30, 2015. Prior to excavation, a Mag nail was found at the surface of the asphalt road. Excavation revealed a railroad rail found at 7 inches deep, directly below the Mag nail. Further excavation revealed a stone found at 8 inches deep, west of the rail. The stone was fully embedded in the clay layer below the road, with the top of the stone being situated at the bottom of the road bed. The top 10 inches of the stone were exposed, at which point the stone measured 10 inches E-W by 13 inches N-S and remained entirely stable in the clay layer below the road. It appeared that the stone was much larger than the portion exposed. No specific marks were detected on the stone. The stone was held as marking the corner and a Harrison monument was set over the top, center of the rock. The nail and rail, removed during excavation, had been 1.5 feet east of the top, center of the stone. Though not stated on the 1970 tie card, it is believed that the rail originates from the field work associated with the creation of that document. Clearly, the statement "no stone" on that document was erroneous.

This corner was originally established as a wood post in 1829.



*Kenneth E. Hedge*  
 Kenneth E. Hedge, County Surveyor

*James S. Swift*  
 James S. Swift, IN LS 20200054  
 March 28, 2015

