

SECTION CORNER RECORD

BOONE COUNTY SURVEYOR'S OFFICE

SW 100-900

State Plane grid coordinates NAD83 (2011):

North: 1740024.08 East: 3077253.36 (U.S. survey feet)

Type of monument: Harrison, 4" disk 'Section Corner'

Depth: One inch below adjacent road surface

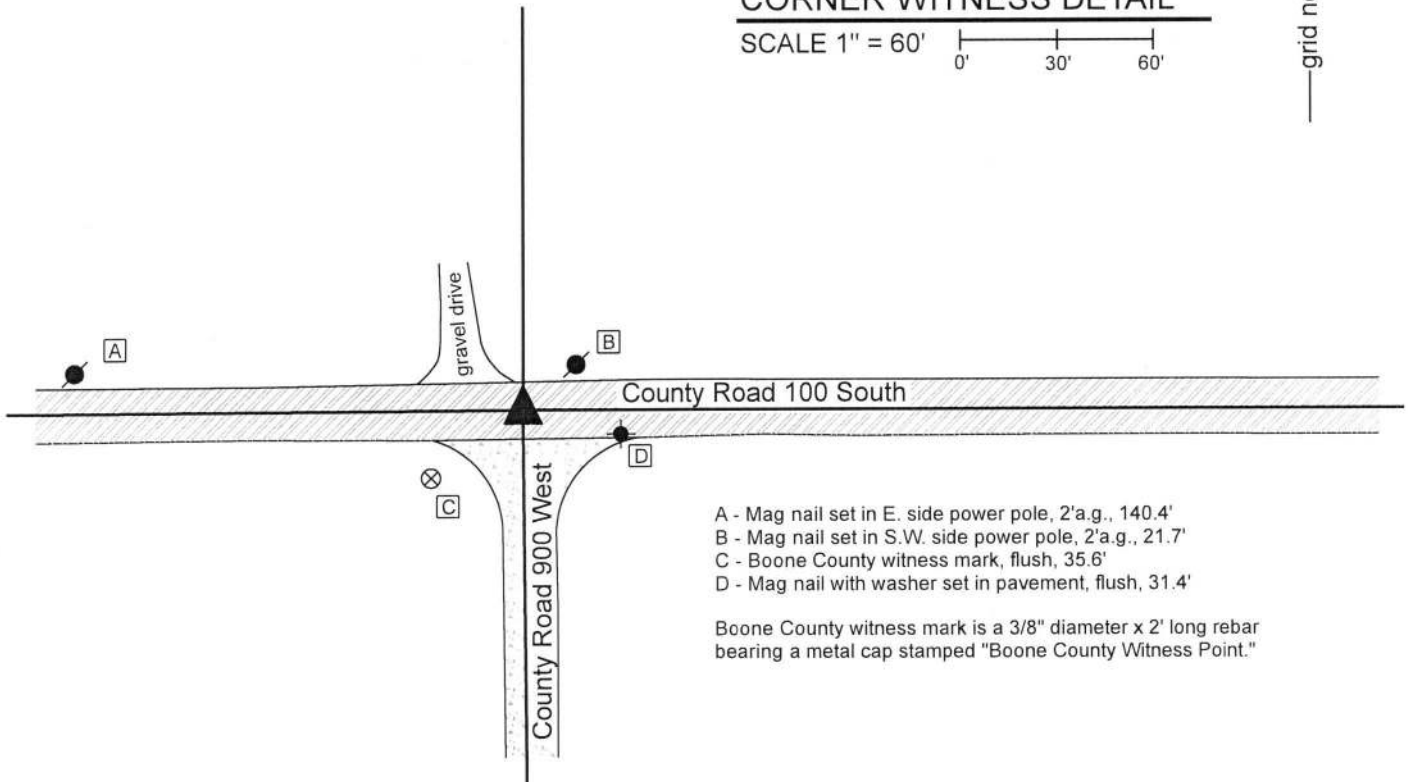
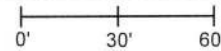
Indiana tie card references:

IN02_T18NR2W04_80 IN02_T18NR2W03_72

IN02_T18NR2W09_08 IN02_T18NR2W10_00

CORNER WITNESS DETAIL

SCALE 1" = 60'



- A - Mag nail set in E. side power pole, 2'a.g., 140.4'
- B - Mag nail set in S.W. side power pole, 2'a.g., 21.7'
- C - Boone County witness mark, flush, 35.6'
- D - Mag nail with washer set in pavement, flush, 31.4'

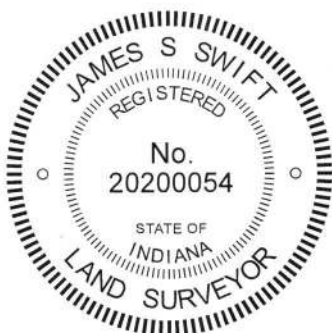
Boone County witness mark is a 3/8" diameter x 2' long rebar bearing a metal cap stamped "Boone County Witness Point."

The Harrison monument was set in place of a vertical section of railroad rail found.

A BCS record dated October 30, 1871 states, with respect to this corner, "There was a rock at corner. (from Ash stp.)" A BCS tie card dated October 17, 1969 calls the corner "Stone Located. RRR set."

This corner was excavated on July 31, 2019. Prior to excavation, a mag nail was found at the surface at the approximate intersection of the two county roads. Excavation revealed a vertical section of railroad rail directly below the mag nail. The rail was removed and further excavation did not reveal any further evidence of the corner. The bottom of the road bed was found at 14 inches deep. It is believed that the stone found in 1969 was removed and replaced in the same position with the rail. This is known to have been a common practice of BCS crews from that era. The position of the nail and rail was held as marking the corner and a Harrison monument was set in the same position as those monuments.

This corner was originally established as a wood post in 1820.



Kenneth E. Hedge
 Kenneth E. Hedge, County Surveyor

James S. Swift
 James S. Swift, IN LS 20200054
 August 28, 2018

Jefferson Township

Section 4 T18N, R2W	Section 3 T18N, R2W
Section 9 T18N, R2W	Section 10 T18N, R2W

SECTION CORNER RECORD

SW 100-950

BOONE COUNTY SURVEYOR'S OFFICE

State Plane grid coordinates NAD83 (2011):

North: 1740009.14 East: 3074617.28 (U.S. survey feet)

Type of monument: Harrison, 4" disk 'Section Corner'

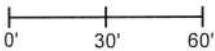
Depth: One inch below adjacent road surface

Indiana tie card references:

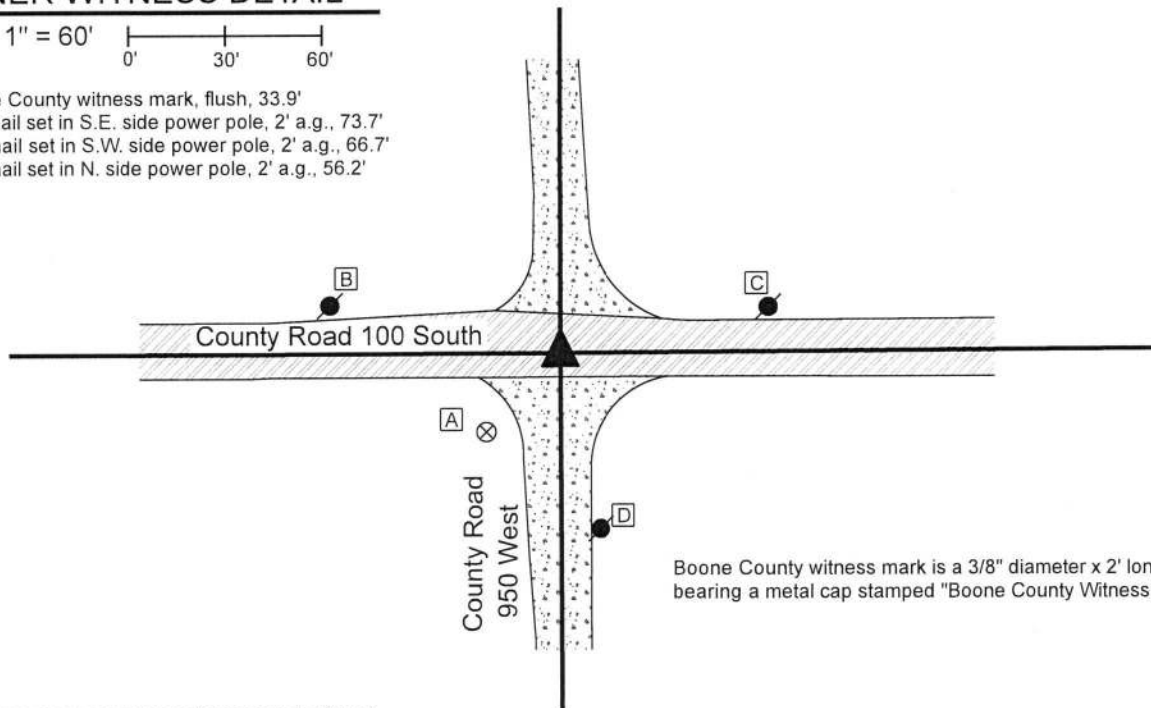
IN02_T18NR2W04_76 IN02_T18NR2W09_04

CORNER WITNESS DETAIL

SCALE 1" = 60'



- A - Boone County witness mark, flush, 33.9'
- B - Mag nail set in S.E. side power pole, 2' a.g., 73.7'
- C - Mag nail set in S.W. side power pole, 2' a.g., 66.7'
- D - Mag nail set in N. side power pole, 2' a.g., 56.2'



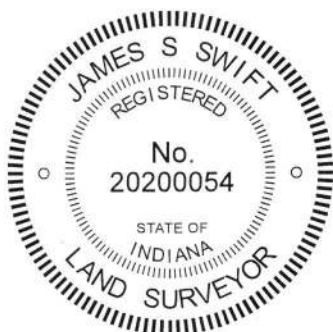
Boone County witness mark is a 3/8" diameter x 2' long rebar bearing a metal cap stamped "Boone County Witness Point."

The Harrison monument was set over a stone found.

No specific descriptions of this corner were found in the BCS Surveyor's record beyond the original establishment of the corner as a wood post in 1820. The corner is shown as the terminal point for measurements in a record of 1851, indicating that some monument from which to measure was present at that time.

A BCS tie card of this corner dated October 17, 1969 states "No stone. RRR set."

Excavation was performed at this corner on July 31, 2019. Prior to excavation, a mag nail was found at the surface of the intersection of the two county roads. Excavation revealed a vertical section of railroad rail found at 4 inches deep, directly below the mag nail. Further excavation revealed a stone found at 14 inches deep, south and east of the rail. With the top 6 inches of the stone exposed, it measured 15 inches N-S by 9 inches E-W. The west side was fully exposed and the stone measured 8 inches tall on that side. No specific marks were detected on the stone. It was fully embedded in the clay layer below the road bed with the top of the stone coincident with the bottom of the road bed. The characteristics of this stone, being embedded in the clay below the road bed and oriented in cardinal directions, but horizontal rather than vertical, fit well with the 1851 measurement entry which indicates that the stone was already present at that time. It has been observed at other corners throughout the county that a stone which was already present prior to the mid 1850s is typically large, oriented in cardinal directions and, more often than not, horizontal, whereas stones specifically set by the county surveyor are typically found to be vertical. The stone was accepted as providing the best available evidence of the corner. The top, center of the stone was held as the specific position of the corner. The stone was left in place and a Harrison monument was set directly over the top, center of the stone. The nail and rail, both removed during excavation, had been 1.1 foot north and 0.5 foot west of the point held as the corner.




Kenneth E. Hedge, County Surveyor


James S. Swift, IN LS 20200054
August 28, 2019

Jefferson
Township

Section 4
T18N, R2W

Section 9
T18N, R2W

SECTION CORNER RECORD

BOONE COUNTY SURVEYOR'S OFFICE

SW 100-1000

State Plane grid coordinates NAD83 (2011):

North: 1740003.33 East: 3071980.53 (U.S. survey feet)

Type of monument: Harrison, 4" disk 'Section Corner'

Depth: One inch below adjacent road surface

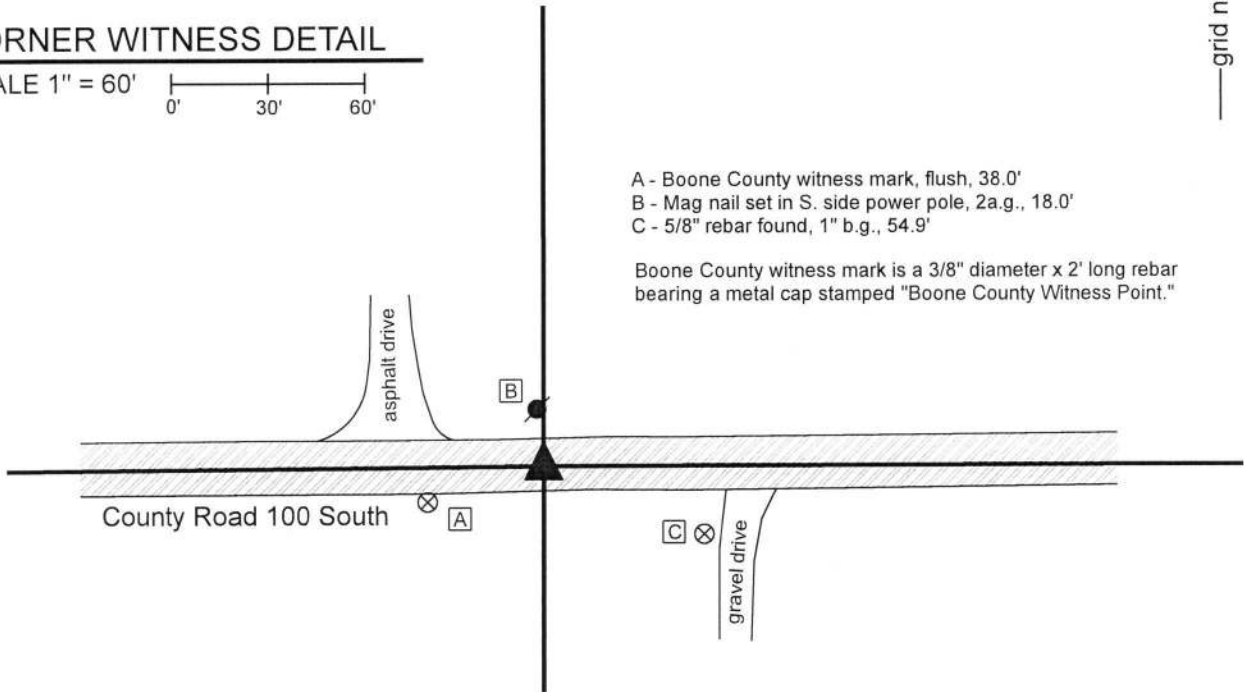
Indiana tie card references:

IN02_T18NR2W05_80 IN02_T18NR2W04_72

IN02_T18NR2W08_08 IN02_T18NR2W09_00

CORNER WITNESS DETAIL

SCALE 1" = 60'



- A - Boone County witness mark, flush, 38.0'
- B - Mag nail set in S. side power pole, 2a.g., 18.0'
- C - 5/8" rebar found, 1" b.g., 54.9'

Boone County witness mark is a 3/8" diameter x 2' long rebar bearing a metal cap stamped "Boone County Witness Point."

The Harrison monument was set in place of a vertical section of railroad rail.

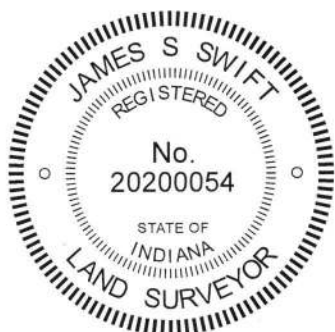
A BCS record dated November 2, 1857 states, with respect to this corner, "Reest. from stumps of both trees. Set Rock 16,12,5 +."

A BCS tie card dated October 17, 1968 calls the corner "No stone - RRR set."

This corner was excavated on July 26, 2019. Prior to excavation, a mag nail was found at the surface of the road. Excavation revealed a railroad rail found at 5 inches deep, the top, center of which was slightly northwest of the nail. Further excavation of an area extending 2.5 feet north, 2.5 feet east, 3.5 feet south and 3.5 feet west of the nail and rail did not reveal any further evidence of the corner. Further probing approximately 18 inches north of the area of excavation also yielded no further evidence. The bottom of the road bed was found at 16 inches deep. Excavation was performed to at least 18 inches deep. Numerous fist sized rocks were found at the bottom of the road bed, indicating that the area had been previously wet and muddy, which may explain why no stone was found.

The rail was held as marking the corner. The rail was removed and replaced with a Harrison monument in the same horizontal position. The nail had been 0.2 foot south and 0.2 foot east of the top, center-of-mass of the rail.

This corner was originally established as a wood post in 1820.



Kenneth E. Hedge
 Kenneth E. Hedge, County Surveyor

James S. Swift
 James S. Swift, IN LS 20200054
 August 28, 2019

Jefferson Township

Section 5 T18N, R2W	Section 4 T18N, R2W
Section 8 T18N, R2W	Section 9 T18N, R2W

SECTION CORNER RECORD

SW 150-900

BOONE COUNTY SURVEYOR'S OFFICE

State Plane grid coordinates NAD83 (2011):

North: 1737377.82 East: 3077278.16 (U.S. survey feet)

Type of monument: Harrison, 4" disk 'Section Corner'

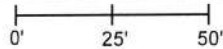
Depth: Six inches below adjacent road surface

Indiana tie card references:

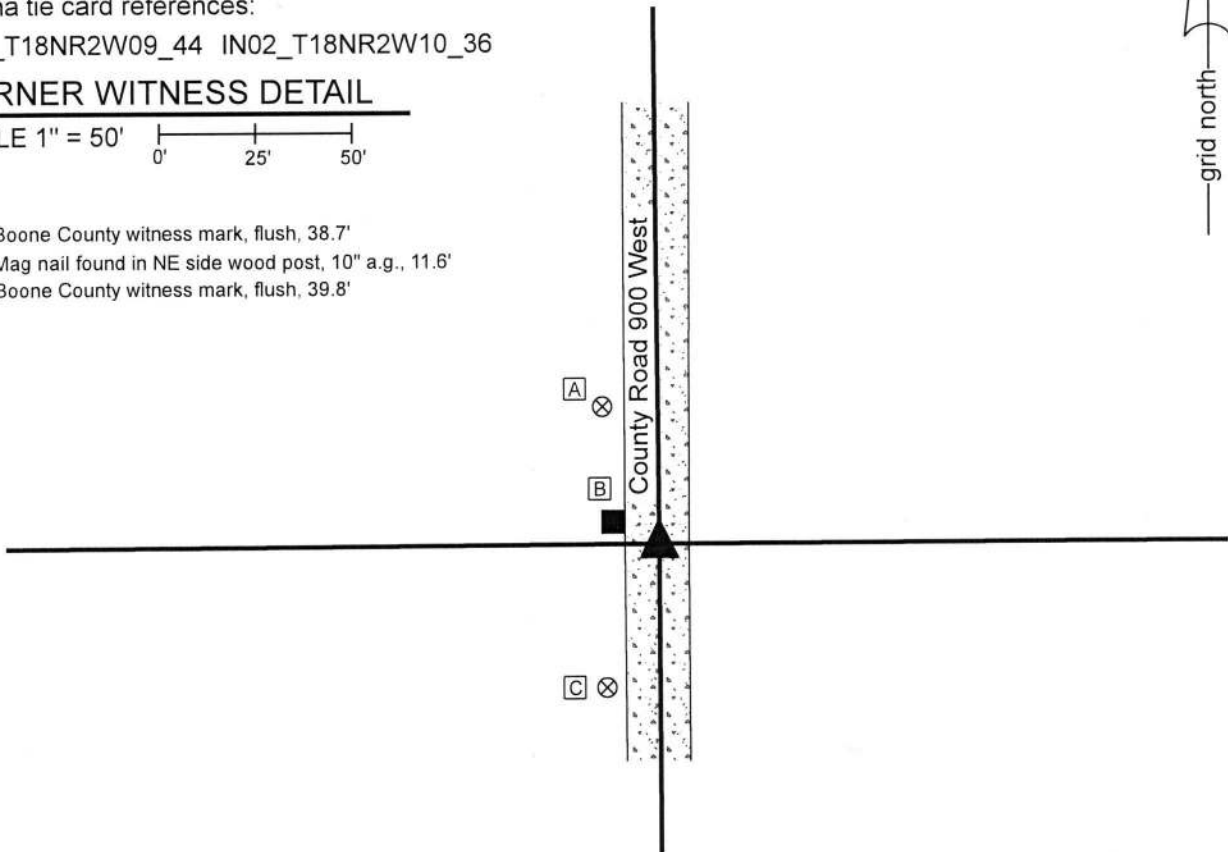
IN02_T18NR2W09_44 IN02_T18NR2W10_36

CORNER WITNESS DETAIL

SCALE 1" = 50'



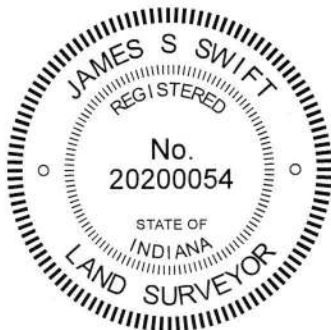
- A - Boone County witness mark, flush, 38.7'
- B - Mag nail found in NE side wood post, 10" a.g., 11.6'
- C - Boone County witness mark, flush, 39.8'



The Harrison monument was set in place of a stone found.

No specific descriptions of this corner were found in the BCS Surveyor's Record beyond the original establishment of the corner as a wood post in 1820. No recent BCS tie cards were found referencing this corner.

Excavation was performed at this corner on October 18, 2019. Prior to excavation, a section of 1/2 inch diameter rebar was found in the approximate center of the county road, opposite a wood post on the west side of the road. Excavation revealed two stones found slightly south and east of the rebar. The upper stone was at 3 inches deep and was over the north edge of the lower stone, which was found at 7 inches deep. The upper stone appeared that it may have been shifted by road grading equipment. It was observed that the road bed is approximately 7 inches thick at this corner. The lower stone was fully embedded in the clay layer below the road bed and appeared to remain undisturbed. The upper stone, as found, was 9 inches N-S by 7 inches E-W by 6 inches thick. The lower stone was 11 inches N-S by 9 inches E-W by 5 inches tall. No specific marks were observed on the stones. The lower stone was accepted as providing the best available evidence of the corner. Both stones were removed and a Harrison monument was set in the position of the top, center of the lower stone. The rebar, removed during excavation, had been 1.5 foot north and 1 foot west of the position held as the corner.



Kenneth E. Hedge
Kenneth E. Hedge, County Surveyor

James S. Swift
James S. Swift, IN LS 20200054
December 3, 2019

Jefferson Township

Section 9 T18N, R2W	Section 10 T18N, R2W
------------------------	-------------------------

SECTION CORNER RECORD

SW 150-1000

BOONE COUNTY SURVEYOR'S OFFICE

State Plane grid coordinates NAD83 (2011):

Corner: North: 1737350.56 East: 3072008.30 (U.S. survey feet)

Witness: North: 1737351.06 East: 3072008.30 (U.S. survey feet)

Corner Monument: Wood corner post, 7" x 7"

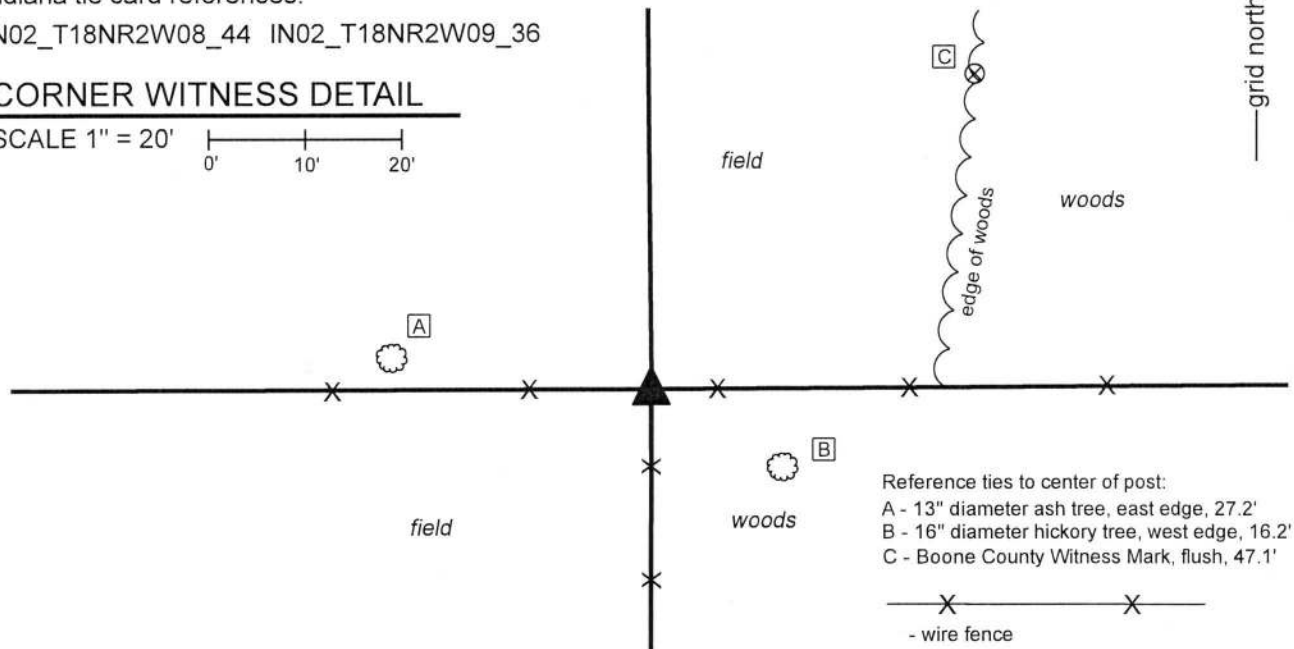
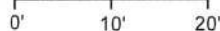
Witness Monument: 5/8" diameter rebar with metal cap stamped 'Boone County Surveyor', 3 inches above adjacent ground.

Indiana tie card references:

IN02_T18NR2W08_44 IN02_T18NR2W09_36

CORNER WITNESS DETAIL

SCALE 1" = 20'



Reference ties to center of post:

A - 13" diameter ash tree, east edge, 27.2'

B - 16" diameter hickory tree, west edge, 16.2'

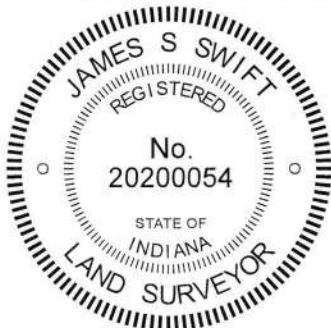
C - Boone County Witness Mark, flush, 47.1'

- wire fence

The wood corner post was found in place.

No specific descriptions of this corner were found in the BCS Surveyor's Record beyond the original establishment of the corner as a wood post in 1820. No recent BCS tie cards were found referencing the corner. A survey recorded as Instrument 9611369 in the Office of the Boone County Recorder shows the corner as a wood corner post.

Manual excavation and probing was performed around this post in September, 2018. Several rocks to the east of the post were found lying on the ground and partially embedded in the ground. None of these rocks appeared to represent stones purposely set to mark the corner. In September, 2018, it was observed that the post falls approximately 1 rod (16.5 feet) east of a straight line connecting the evidence of the section corners to the north and south. It was also observed that a line doubled from the evidence of the center of section (rebar found in the center of C.R. 1050 West) through a post approximately one-quarter mile west of the subject corner indicates a possible position for the corner approximately 1 rod west of the found post. Confirmation of the position of the corner was delayed while further evidence was sought in the form of adjoining deed descriptions and other accessory evidence such as posts to the east and south. In addition, the corners to the north and south were excavated and monumented in July and September, 2019, respectively. Reviewing additional evidence, it was observed that the position of the existing post fits well with evidence to the east, including the relative positions of the post approximately one-quarter mile east of the subject corner and evidence of the center of section 9, in the form of a rebar in the center of County Road 950 West. It was also observed that the existing post falls on the northerly prolongation of a line from the southwest corner of section 9 through a rebar found at the southwest edge of a wood corner post approximately 1/4 mile south of the subject corner. No deed references were found which call into question the position of the existing post. The post itself is 7 inches square with fence to the south, east and west, fence cut to the north, a brace to the east and a brace notch to the north. The post matches the position of the post shown as the corner on the survey recorded as Instrument 9611369. The post was accepted as the best available evidence of the corner and held as marking the corner. A witness rebar was set on the north edge of the post, 0.5 foot north of the center of the post, on October 29, 2019. The rebar is intended as a witness to the post and the center of the post is held as the specific position of the corner.

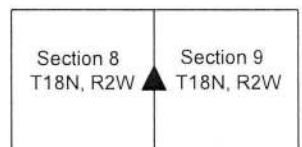


Kenneth E. Hedge
 Kenneth E. Hedge, County Surveyor

James S. Swift
 James S. Swift, IN LS 20200054

November 13, 2019

Jefferson Township



SECTION CORNER RECORD

SW 200-900

BOONE COUNTY SURVEYOR'S OFFICE

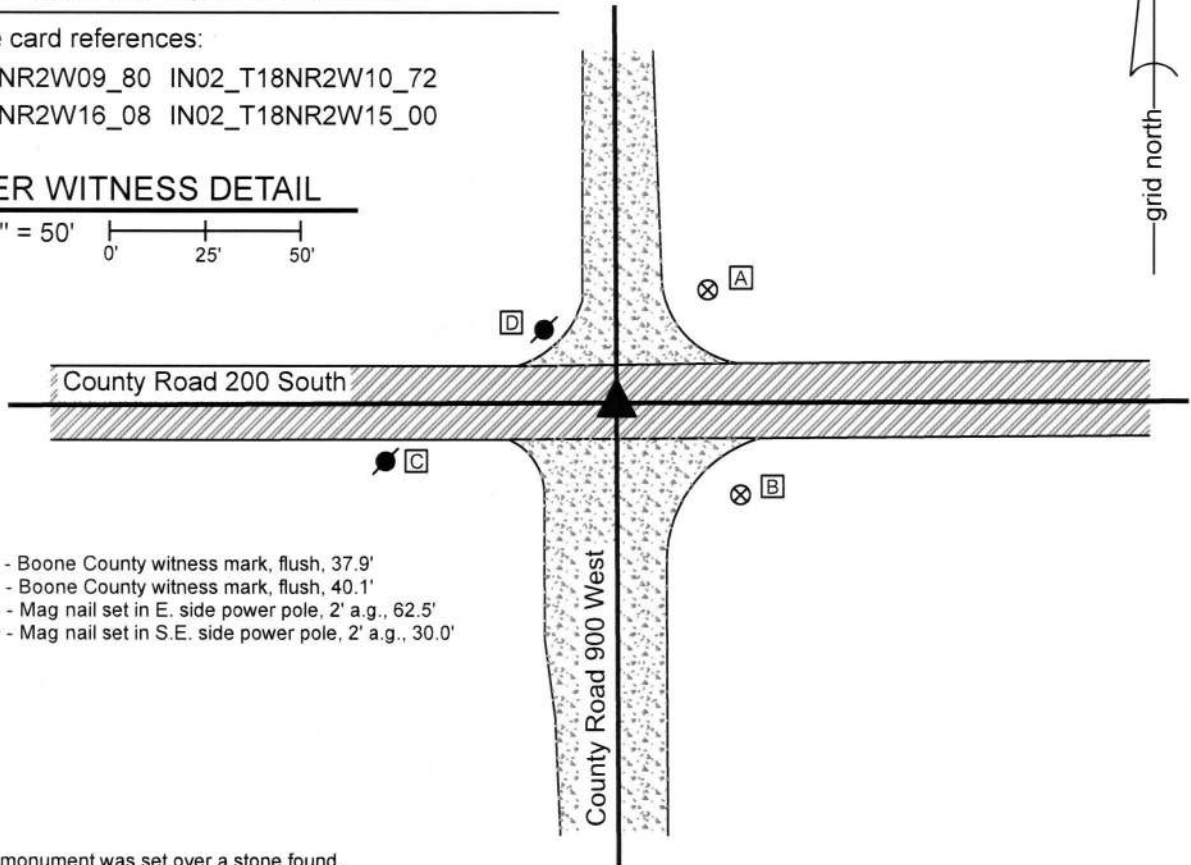
State Plane grid coordinates NAD83 (2011):
 North: 1734724.34 East: 3077292.16 (U.S. survey feet)

Type of monument: Harrison, 4" disk 'Section Corner'
 Depth: One inch below adjacent road surface

Indiana tie card references:
 IN02_T18NR2W09_80 IN02_T18NR2W10_72
 IN02_T18NR2W16_08 IN02_T18NR2W15_00

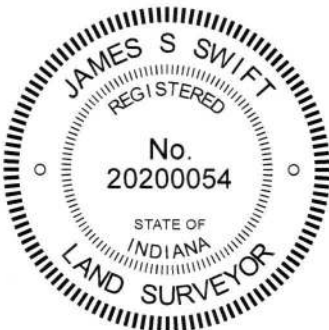
CORNER WITNESS DETAIL

SCALE 1" = 50'



- A - Boone County witness mark, flush, 37.9'
- B - Boone County witness mark, flush, 40.1'
- C - Mag nail set in E. side power pole, 2' a.g., 62.5'
- D - Mag nail set in S.E. side power pole, 2' a.g., 30.0'

The Harrison monument was set over a stone found.
 A BCS record dated April 18-19, 1870 states, with respect to this corner, "Reestab from stump of Beech. Set two rocks. One rock 10.9. 5 1/2. Top rock 11.9.8 +." A BCS tie card dated August 23, 1967 states "Stone Located - 10" RRR N. of Rock."
 This corner was excavated on September 18, 2019. Prior to excavation, a 5/8 inch rebar was found at 1 inch deep in the gravel road intersection. Excavation revealed a vertical section of railroad rail found at 5 inches deep. The rebar had been against the southwest edge of the rail. Excavation also revealed a wood hub found approximately 10 inches north of the rail, also at 5 inches deep. Further excavation revealed the lower stone described in the 1870 record at 30 inches deep. The stone had a distinct etched "+" mark on the top, slightly north of the top center of the stone. The stone measured 10 inches N-S by 9 inches E-W by approximately 5 inches thick. The stone was fully embedded in the clay layer below the road. The bottom of the road bed was found to be at 21 inches deep. Hence, the upper rock, being 11 inches tall, would have protruded into the bottom of the road bed by approximately 2 inches, a typical condition found at other corners throughout the county. The wording on the 1967 tie card implies that a 10 inch rail was set north of the stone found that day. However, the found rail was 30 inches long and the rail had been 10 inches north of the record lower rock. It is believed most likely that, on August 23, 1967, the top rock was found and removed. The lower rock was also apparently found but not removed. Sufficient clearance was evidently not available at that time to place a 30 inch rail (standard size) over the rock, so the rail was set north of the rock. The tie card clearly intends to call for the rock, not the rail, as marking the corner. The wood hub was over the rock. The hub may have been set in 1967 or later. The top, center of the record lower stone was held as marking the corner and a Harrison monument was set over this position.
 This corner was originally established as a wood post in 1820.



Kenneth E. Hedge
 Kenneth E. Hedge, County Surveyor

Jefferson Township

James S. Swift
 James S. Swift, IN LS 20200054
 September 25, 2019

Jackson Township

Section 9 T18N, R2W	Section 10 T18N, R2W
Section 16 T18N, R2W	Section 15 T18N, R2W

SECTION CORNER RECORD

SW 200-950

BOONE COUNTY SURVEYOR'S OFFICE

State Plane grid coordinates NAD83 (2011):
North: 1734712.56 East: 3074647.21 (U.S. survey feet)

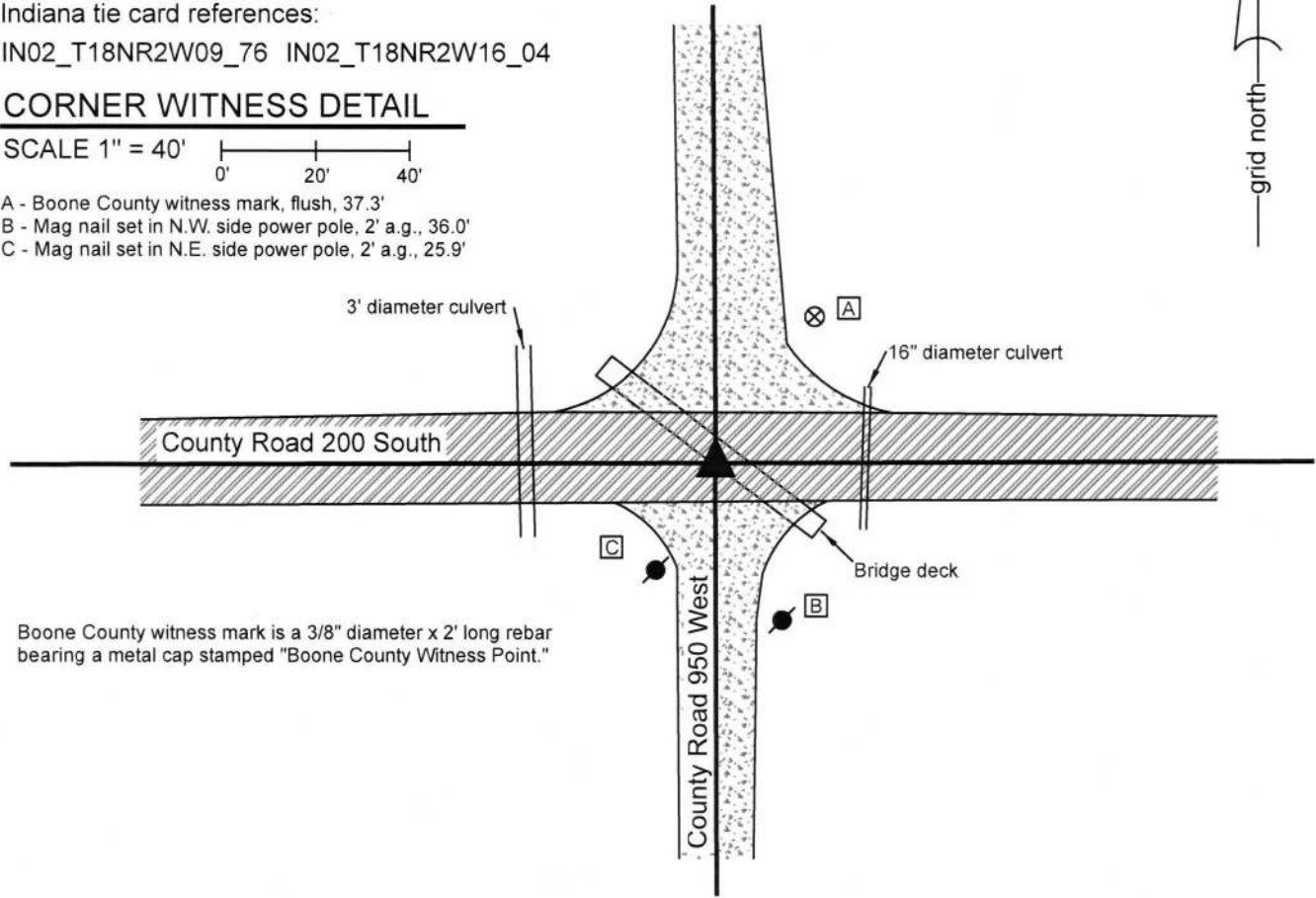
Type of monument: Harrison, 4" disk 'Section Corner'
Depth: One inch below adjacent road surface

Indiana tie card references:
IN02_T18NR2W09_76 IN02_T18NR2W16_04

CORNER WITNESS DETAIL

SCALE 1" = 40'
0' 20' 40'

- A - Boone County witness mark, flush, 37.3'
- B - Mag nail set in N.W. side power pole, 2' a.g., 36.0'
- C - Mag nail set in N.E. side power pole, 2' a.g., 25.9'



Boone County witness mark is a 3/8" diameter x 2' long rebar bearing a metal cap stamped "Boone County Witness Point."

The Harrison monument was set in place of a square shafted bolt spike found and a Mag nail found. A BCS record dated April 18-19, 1870 states, with respect to this corner, "Reest. drove stake under bridge" with reference calls to parts of a mill stone. No recent BCS tie cards were found referencing this corner. No large scale excavation was performed at this corner as the corner falls over a concrete bridge. Per the 1870 record, the corner has evidently fallen over a bridge for a long time. The current bridge is clearly younger than what would have been present in 1870. This corner was monumented on September 18, 2019. A Mag Nail was observed to be present at the center of the intersection of the roads in all four cardinal directions. The nail was removed and a bolt spike with square shaft 12 inches long was found at 4 inches deep, directly below the nail. Both monuments fit well with the local evidence of the corner in the form of the intersection of the roadways and also fit well with the relative positions of proximate corners. The nail and spike were accepted as representing the best available evidence of the corner, given the lack of possibility that more ancient evidence would be found. A Harrison monument was set in the position of the nail and spike. This corner was originally established as a wood post in 1820.



Kenneth E. Hedge
Kenneth E. Hedge, County Surveyor

James S. Swift
James S. Swift, IN LS 20200054
September 25, 2019

Jefferson Township

Section 9
T18N, R2W

Jackson Township

Section 16
T18N, R2W

SECTION CORNER RECORD

SW 200-1000

BOONE COUNTY SURVEYOR'S OFFICE

State Plane grid coordinates NAD83 (2011):

North: 1734704.74 East: 3072003.61 (U.S. survey feet)

Type of monument: Harrison, 4" disk 'Section Corner'

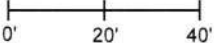
Depth: One inch below adjacent road surface

Indiana tie card references:

IN02_T18NR2W08_80 IN02_T18NR2W09_72

IN02_T18NR2W17_08 IN02_T18NR2W16_00

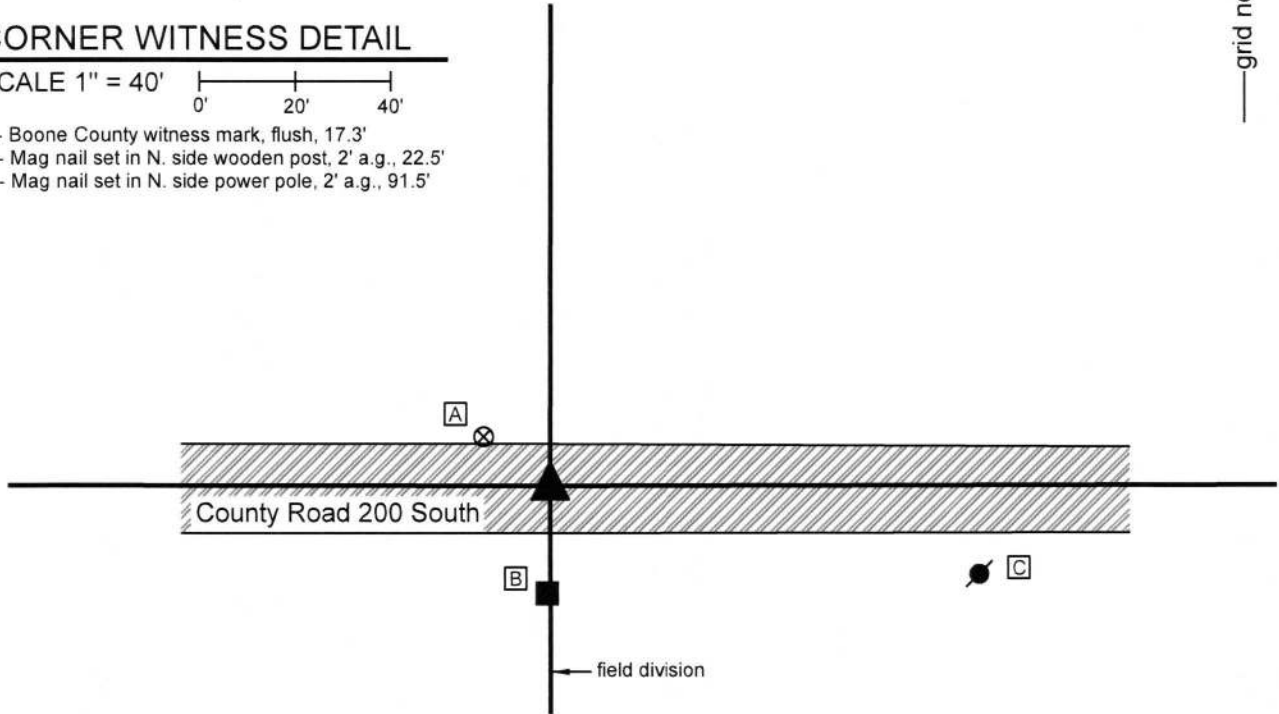
CORNER WITNESS DETAIL

SCALE 1" = 40' 

A - Boone County witness mark, flush, 17.3'

B - Mag nail set in N. side wooden post, 2' a.g., 22.5'

C - Mag nail set in N. side power pole, 2' a.g., 91.5'

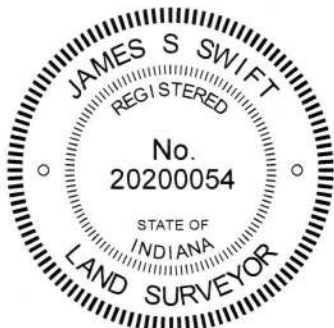


The Harrison monument was set over a stone found.

A BCS record of April 18-19, 1870 states, with respect to this corner, "Reest. Set two rocks. One 7.5 12. 4 marked +. Top rock 11.8.9 marked +." A BCS tie card dated August 23, 1967 states "no stone."

This corner was excavated on September 17, 2019. Prior to excavation, a mag nail was found at the surface of the road, slightly east of two posts on the south side of the road. Excavation revealed a vertical section of railroad rail found at 11 inches deep, directly below the nail. Further excavation revealed a stone found at 24 inches deep, west of the nail and rail. The stone appeared to be leaning toward the east, as found. As stood vertically, the stone measured 7 inches E-W by 6 inches N-S by 10 inches tall, 1 inch smaller in each dimension than what was reported in the 1870 record. No other stone was found below this stone, though fragments of a wood stake were found along the east edge of the stone. The found stone fit better with the posts on the south side of the road (one ancient, one newer) than did the rail. No explanation is offered as to why the lower stone was not found. The found stone was slightly smaller than called in the 1870 record though of the same proportions. The stone was accepted as being the best available evidence of the corner. The stone was left in place, as stood vertically, and a Harrison monument was set directly over the top, center of the stone. The nail and rail, both removed during excavation, had been 1.7 foot east and 0.7 foot south of the stone.


This corner was originally established as a wood post in 1820.




Kenneth E. Hedge, County Surveyor

Jefferson
Township

Section 8 T18N, R2W	Section 9 T18N, R2W
Section 17 T18N, R2W	Section 16 T18N, R2W


James S. Swift, IN LS 20200054
September 25, 2019

Jackson
Township