

SECTION CORNER RECORD

SE 100-800

BOONE COUNTY SURVEYOR'S OFFICE

State Plane grid coordinates NAD83 (NSRS 2007):

North: 1741327.98 East: 3167147.92 (U.S. survey feet)

Type of monument: Harrison, 4" disk 'Section Corner'

Depth: Eight inches below adjacent gravel road surface

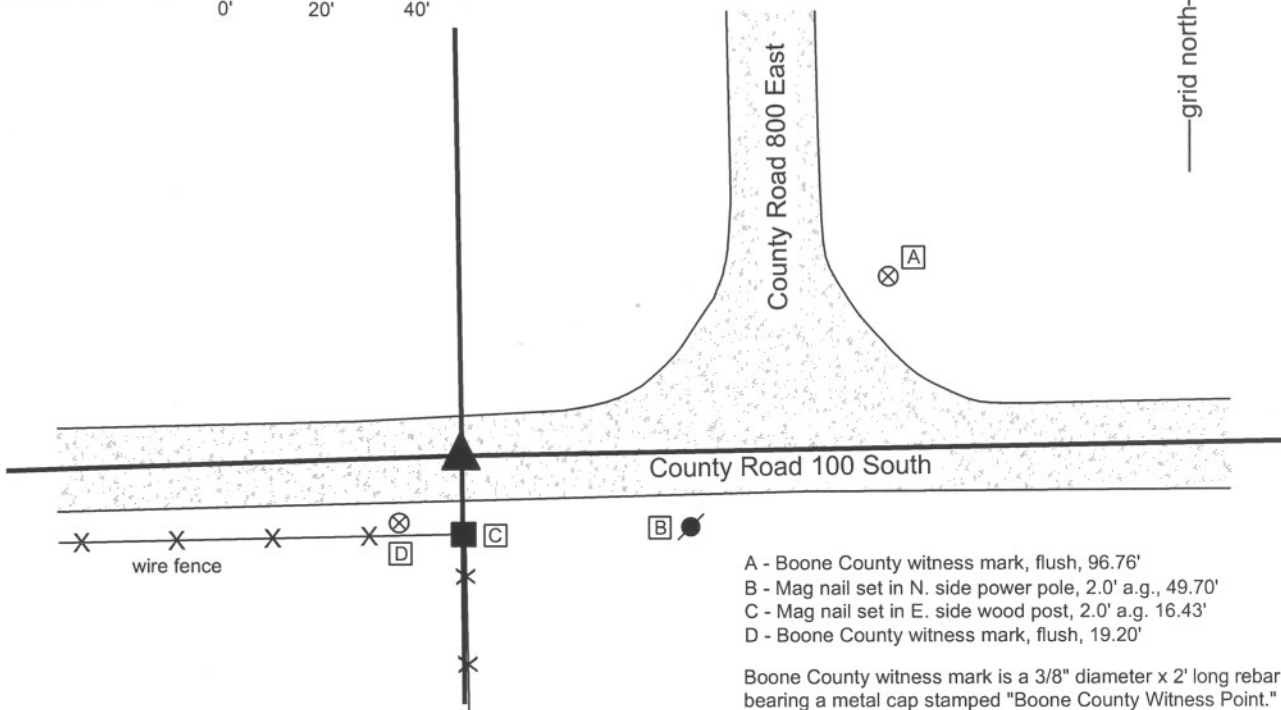
Indiana tie card references:

IN02_T18NR2E04_72 IN02_T18NR2E05_80

IN02_T18NR2E08_08 IN02_T18NR2E09_00

CORNER WITNESS DETAIL

SCALE 1" = 40'



- A - Boone County witness mark, flush, 96.76'
- B - Mag nail set in N. side power pole, 2.0' a.g., 49.70'
- C - Mag nail set in E. side wood post, 2.0' a.g. 16.43'
- D - Boone County witness mark, flush, 19.20'

Boone County witness mark is a 3/8" diameter x 2' long rebar bearing a metal cap stamped "Boone County Witness Point."

The harrison monument was set over a stone found and in place of an iron pipe found.

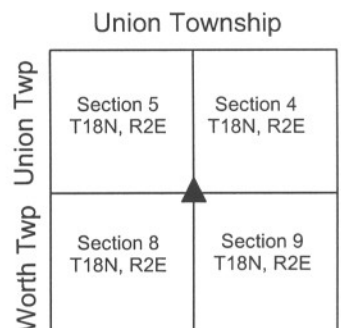
A BCS record of March 22, 1880 states "Reestablished Set Rock 17.24.20+." A BCS tie card of June 7, 1991 shows the corner as a one inch iron pipe found. This corner was excavated on May 14, 2009. Prior to excavation a one inch diameter iron pipe was found at 7 inches deep. This pipe appeared to be the same monument referred to on the 1991 tie card. Excavation revealed a large stone found at 16 inches deep. The stone is 24 inches E-W by 20 inches N-S and measures 17 inches tall on the south side, matching the dimensions described in the 1880 record. No specific markings were found on the stone. The pipe was over the stone, bent slightly and leaning over the top of the stone. The top of the pipe was approximately 2 inches north of the approximate top center of the stone. The position of the pipe was held as the specific position of the corner and the harrison monument was set at this position, over the stone but slightly north of the vague, approximate top center. The pipe was removed during excavation.

This corner was established as a wood post in July, 1821.



Kenneth E. Hedge
Kenneth E. Hedge, County Surveyor

James S. Swift
James S. Swift, IN LS 20200054
July 14, 2010



PHOTOGRAPHIC DOCUMENTATION

Date of photography: May 14, 2009

View of the stone as first exposed.



Brandon Miller holding the iron pipe in the approximate position as it was originally found and oriented, prior to removal.



View from the east, looking across the stone and west along County Road 100 South.



View from the north, looking across the stone and south along the fence to the south.



For details and documentation, refer to related sheet "Section Corner Record."

SECTION CORNER RECORD

SE 100-850

BOONE COUNTY SURVEYOR'S OFFICE

State Plane grid coordinates NAD83 (NSRS 2007):
North: 1741372.10 East: 3169837.81 (U.S. survey feet)

Type of monument: Harrison, 4" disk 'Section Corner'
Depth: Flush with adjacent ground

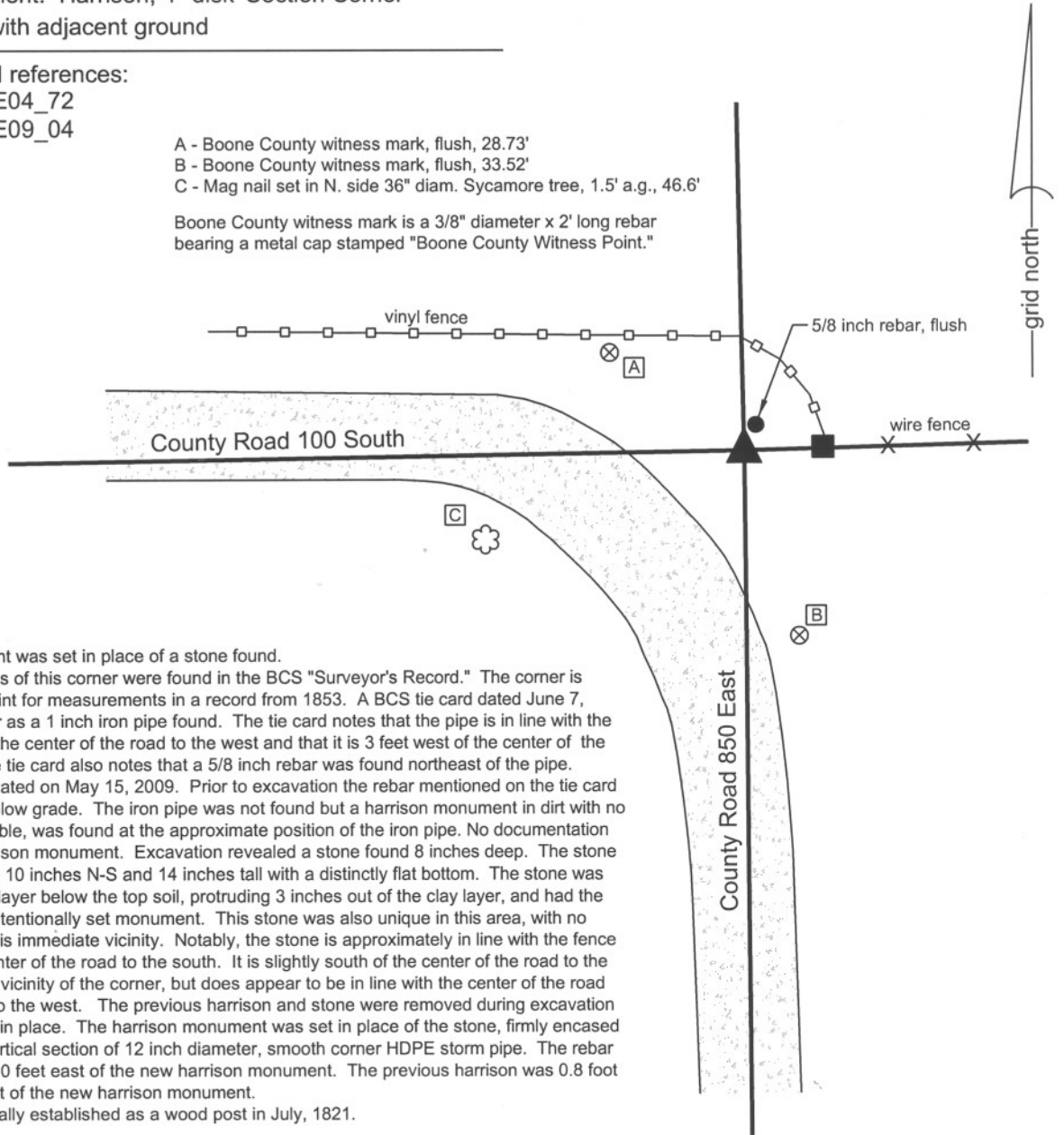
Indiana tie card references:
IN02_T18NR2E04_72
IN02_T18NR2E09_04

CORNER WITNESS DETAIL

SCALE 1" = 30'
0' 15' 30'

- A - Boone County witness mark, flush, 28.73'
- B - Boone County witness mark, flush, 33.52'
- C - Mag nail set in N. side 36" diam. Sycamore tree, 1.5' a.g., 46.6'

Boone County witness mark is a 3/8" diameter x 2' long rebar bearing a metal cap stamped "Boone County Witness Point."



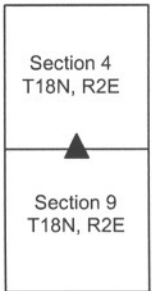
The harrison monument was set in place of a stone found.
 No specific descriptions of this corner were found in the BCS "Surveyor's Record." The corner is noted as a terminal point for measurements in a record from 1853. A BCS tie card dated June 7, 1991 shows the corner as a 1 inch iron pipe found. The tie card notes that the pipe is in line with the fence to the east and the center of the road to the west and that it is 3 feet west of the center of the road to the south. The tie card also notes that a 5/8 inch rebar was found northeast of the pipe. This corner was excavated on May 15, 2009. Prior to excavation the rebar mentioned on the tie card was found 6 inches below grade. The iron pipe was not found but a harrison monument in dirt with no concrete, hence unstable, was found at the approximate position of the iron pipe. No documentation was found for the harrison monument. Excavation revealed a stone found 8 inches deep. The stone was 10 inches E-W by 10 inches N-S and 14 inches tall with a distinctly flat bottom. The stone was embedded in the clay layer below the top soil, protruding 3 inches out of the clay layer, and had the characteristics of an intentionally set monument. This stone was also unique in this area, with no other rocks found in this immediate vicinity. Notably, the stone is approximately in line with the fence to the east and the center of the road to the south. It is slightly south of the center of the road to the west in the immediate vicinity of the corner, but does appear to be in line with the center of the road several hundred feet to the west. The previous harrison and stone were removed during excavation and the rebar was left in place. The harrison monument was set in place of the stone, firmly encased in concrete within a vertical section of 12 inch diameter, smooth corner HDPE storm pipe. The rebar is 4.5 feet north and 2.0 feet east of the new harrison monument. The previous harrison was 0.8 foot north and 2.3 feet west of the new harrison monument.
 This corner was originally established as a wood post in July, 1821.



Kenneth E. Hedge
 Kenneth E. Hedge, County Surveyor

James S. Swift
 James S. Swift, IN LS 20200054
 July 14, 2010

Union Twp



PHOTOGRAPHIC DOCUMENTATION

Date of photography: May 15, 2009

View of the stone and the fence to the east.



View of the stone and the road to the west.



The stone, displaced and rolled slightly to the side, showing the clay layer in which the stone was embedded.



View from above the stone, looking south along County Road 850 East.



For details and documentation, refer to related sheet "Section Corner Record."

SECTION CORNER RECORD

SE 100-900

BOONE COUNTY SURVEYOR'S OFFICE

State Plane grid coordinates NAD83 (NSRS 2007):

North: 1741442.23 East: 3172484.20 (U.S. survey feet)

Type of monument: Harrison, 4" disk 'Section Corner'

Depth: One inch below adjacent road surface

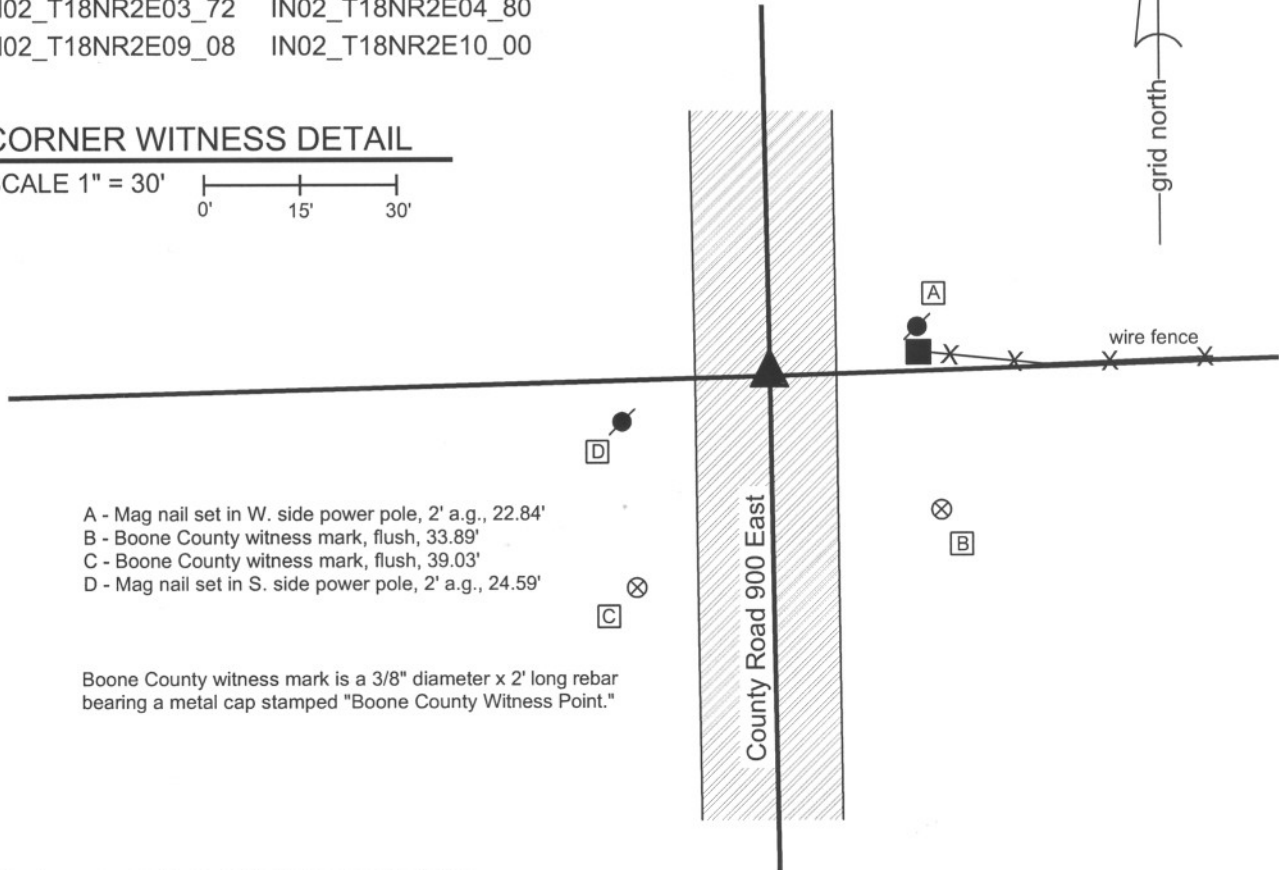
Indiana tie card references:

IN02_T18NR2E03_72 IN02_T18NR2E04_80

IN02_T18NR2E09_08 IN02_T18NR2E10_00

CORNER WITNESS DETAIL

SCALE 1" = 30'



- A - Mag nail set in W. side power pole, 2' a.g., 22.84'
- B - Boone County witness mark, flush, 33.89'
- C - Boone County witness mark, flush, 39.03'
- D - Mag nail set in S. side power pole, 2' a.g., 24.59'

Boone County witness mark is a 3/8" diameter x 2' long rebar bearing a metal cap stamped "Boone County Witness Point."



The Harrison monument was set in place of a stone found.

A BCS record of August 16, 1892 states "Found from north beech, placed a small rock at corner but no mark on it." A BCS tie card dated June 6, 1991 shows the corner as a 5/8 inch rebar found. This corner was excavated on May 15, 2009. Prior to excavation, a 5/8 inch rebar was found in a hole in the asphalt at 8 inches below grade. Excavation revealed a stone found at 6 inches deep, slightly south and east of the rebar. The stone is embedded in the clay layer below the road, protruding approximately 1 inch out of the clay. The stone was 9 inches E-W by 7 inches N-S and 10 inches tall. No specific marks were found on the stone. The stone is in line with the fence to the east. It is noted that the stone was shallow but embedded in the clay, due to a road bed of minimal thickness. The 1876 map of Boone County does not show this section of road, indicating that this corner was not crossed by an early wagon road. This may explain the lack of depth to the road bed, as the lower portion of the road is typically of the loose sandy, gravel material which was placed on the wagon roads. This section of road does not contain this material, with asphalt over modern road stone directly over the clay layer. The stone was removed and the Harrison monument was set in its place. The rebar, removed during excavation, was 0.7 foot north and 0.2 foot east of the stone. This corner was originally established as a wood post in July, 1821.



Kenneth E. Hedge
 Kenneth E. Hedge, County Surveyor

James S. Swift
 James S. Swift, IN LS 20200054
 July 14, 2010

Union Township

Section 4 T18N, R2E	Section 3 T18N, R2E
Section 9 T18N, R2E	Section 10 T18N, R2E

PHOTOGRAPHIC DOCUMENTATION

Date of photography: May 15, 2009

The stone, removed from the road bed and stood in the orientation in which it was found. View is of the west side of the stone, as found.



View from the north, looking across the stone and south along County Road 900 East.



For details and documentation, refer to related sheet "Section Corner Record."

SECTION CORNER RECORD

SE 150-800

BOONE COUNTY SURVEYOR'S OFFICE

State Plane grid coordinates NAD83 (NSRS 2007):

North: 1738676.62 East: 3167166.88 (U.S. survey feet)

Type of monument: stone marked +

Depth: approximately 6 inches

Note: The stone is visible within a section of 12 inch diameter plastic storm pipe set vertically around the stone.

Indiana tie card references:

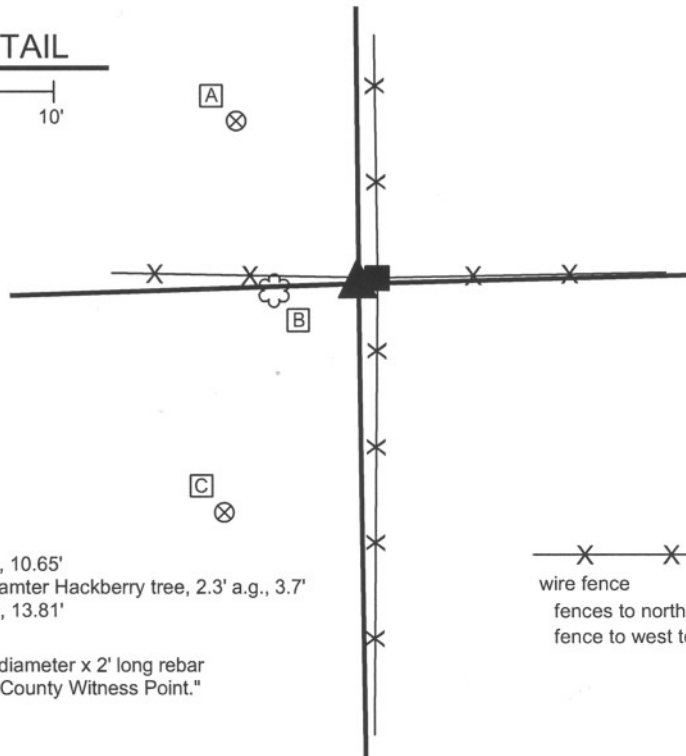
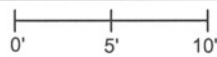
IN02_T18NR2E08_44

IN02_T18NR2E09_36



CORNER WITNESS DETAIL

SCALE 1" = 10'



- A - Boone County witness mark, flush, 10.65'
- B - Mag nail set in N.E. side, 9 inch diamter Hackberry tree, 2.3' a.g., 3.7'
- C - Boone County witness mark, flush, 13.81'



wire fence
fences to north, east and south continue
fence to west terminates at point shown

Boone County witness mark is a 3/8" diameter x 2' long rebar bearing a metal cap stamped "Boone County Witness Point."

The stone was found in place.

A BCS record of March 22, 1880 states "Reestablished Set Rock 16.13.11 +." No recent tie cards were found for this corner.

The record stone was found at the west edge of the base of a wood corner post, approximately 6 inches below grade. The stone has a distinct "+" etched on the top. The stone measures approximately 13 inches E-W by 11 inches N-S, by at least 13 inches tall. The flat portion of the top of the stone is 2-1/2 inches E-W by 4 inches N-S. The etched "+" is in the middle of the top and was held as the specific point for the corner.

The stone was left in place. A 16 inch tall section of 12 inch diameter HDPE storm pipe was set vertically around the stone. The top of the stone is 6 inches below the top of the section of storm pipe.

This corner was originally established as a wood post in July, 1821.



Kenneth E. Hedge
Kenneth E. Hedge, County Surveyor

James S. Swift
James S. Swift, IN LS 20200054
July 14, 2010

Worth Twp Union Twp

Section 8 T18N, R2E	Section 9 T18N, R2E
------------------------	------------------------

PHOTOGRAPHIC DOCUMENTATION

Date of photography: May 20-21, 2009

The corner post prior to excavation.



View of the stone as first exposed.



View of the stone more fully exposed.



A vertical section of plastic storm pipe set around the stone. The stone was left as found, but surrounded by the section of storm pipe.



The stone partially exposed and washed.



For details and documentation, refer to related sheet "Section Corner Record."

SECTION CORNER RECORD

SE 150-900

BOONE COUNTY SURVEYOR'S OFFICE

State Plane grid coordinates NAD83 (NSRS 2007):

North: 1738811.42 East: 3172526.27 (U.S. survey feet)

Type of monument: Harrison, 4" disk 'Section Corner'

Depth: One inch below adjacent road surface

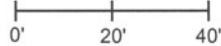
Indiana tie card references:

IN02_T18NR2E09_44

IN02_T18NR2E10_36

CORNER WITNESS DETAIL

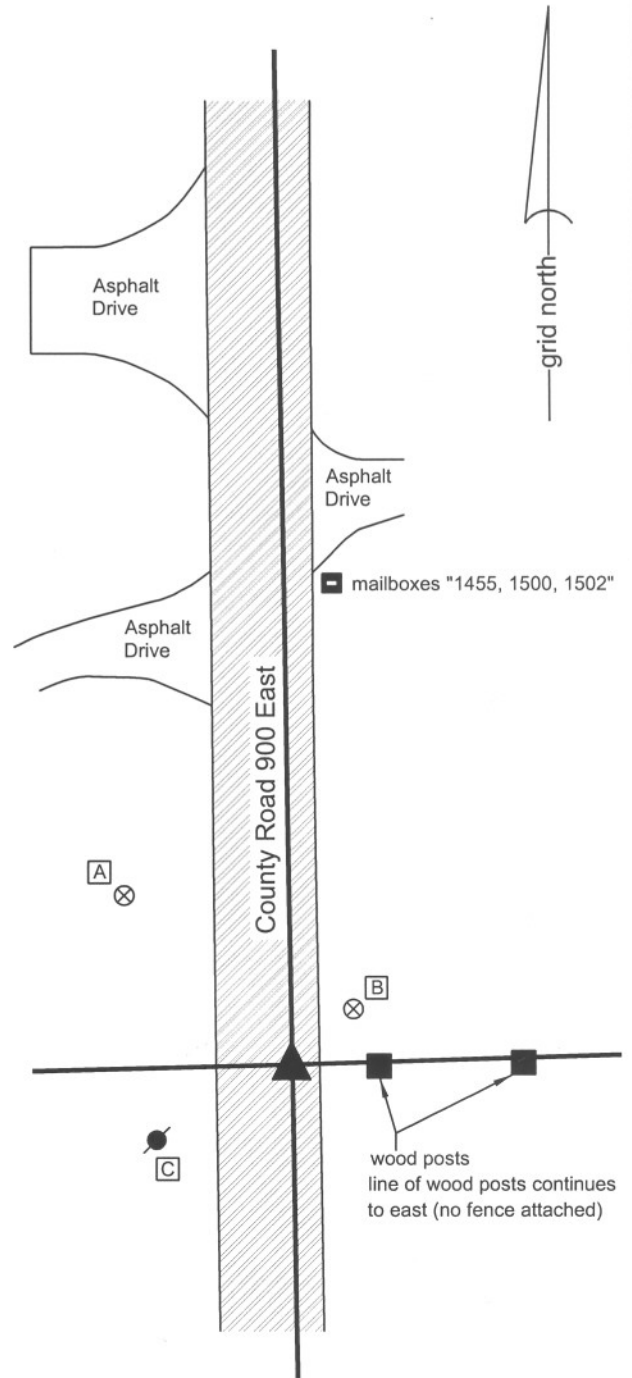
SCALE 1" = 40'



- A - Boone County witness mark, flush, 49.52'
- B - Boone County witness mark, flush, 17.28'
- C - Mag nail set in E. side power pole, 2.0' a.g., 31.5'

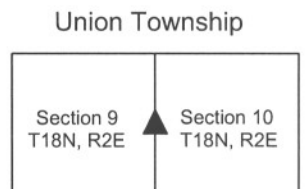
Boone County witness mark is a 3/8" diameter x 2' long rebar bearing a metal cap stamped "Boone County Witness Point."

The harrison monument was set over a stone found. No specific descriptions of this corner were found in the BCS "Surveyor's Record" but the corner is mentioned as the terminal point for measurements in 1840 and 1903. A BCS tie card dated October 11, 1968 states "no stone" and shows a location for the corner but does not describe what monument may have been set. This corner was excavated on May 28, 2009. Prior to excavation, a mag nail was visible in a hole in the asphalt, 1 inch below grade. Excavation revealed no other monument below the mag nail, but excavation did reveal a stone found at 16 inches below grade, north and east of the nail. With 8 inches of the stone exposed, the stone measures 10 inches E-W by 9 inches N-S. The stone is embedded in the clay layer below the road bed, protruding approximately 3 inches into the bottom of the road bed. A chiseled "+" is visible on the top of the stone. The mark appears to be slightly worn but is distinctly visible. A thin metal rod was found along the south edge of the stone. The harrison monument was set over the etched "+" on the top of the stone. The mag nail, removed during excavation, was 0.7 foot south and 0.2 foot west of the harrison and stone. This corner was originally established as a wood corner post in July, 1821.



Kenneth E. Hedge
 Kenneth E. Hedge, County Surveyor

James S. Swift
 James S. Swift, IN LS 20200054
 July 14, 2010



PHOTOGRAPHIC DOCUMENTATION

Date of photography: May 28, 2009

The area of excavation marked in pink paint, prior to excavation. The stone was found within this area, in the north bound lane of the road.



View of the stone as first exposed.



View of the stone more fully exposed.
View from the east.



View of the stone wetted, showing the etched mark on top. View from the west.



For details and documentation, refer to related sheet "Section Corner Record."

SECTION CORNER RECORD

SE 200-800

BOONE COUNTY SURVEYOR'S OFFICE

State Plane grid coordinates NAD83 (NSRS 2007):
 North: 1736025.67 East: 3167202.92 (U.S. survey feet)

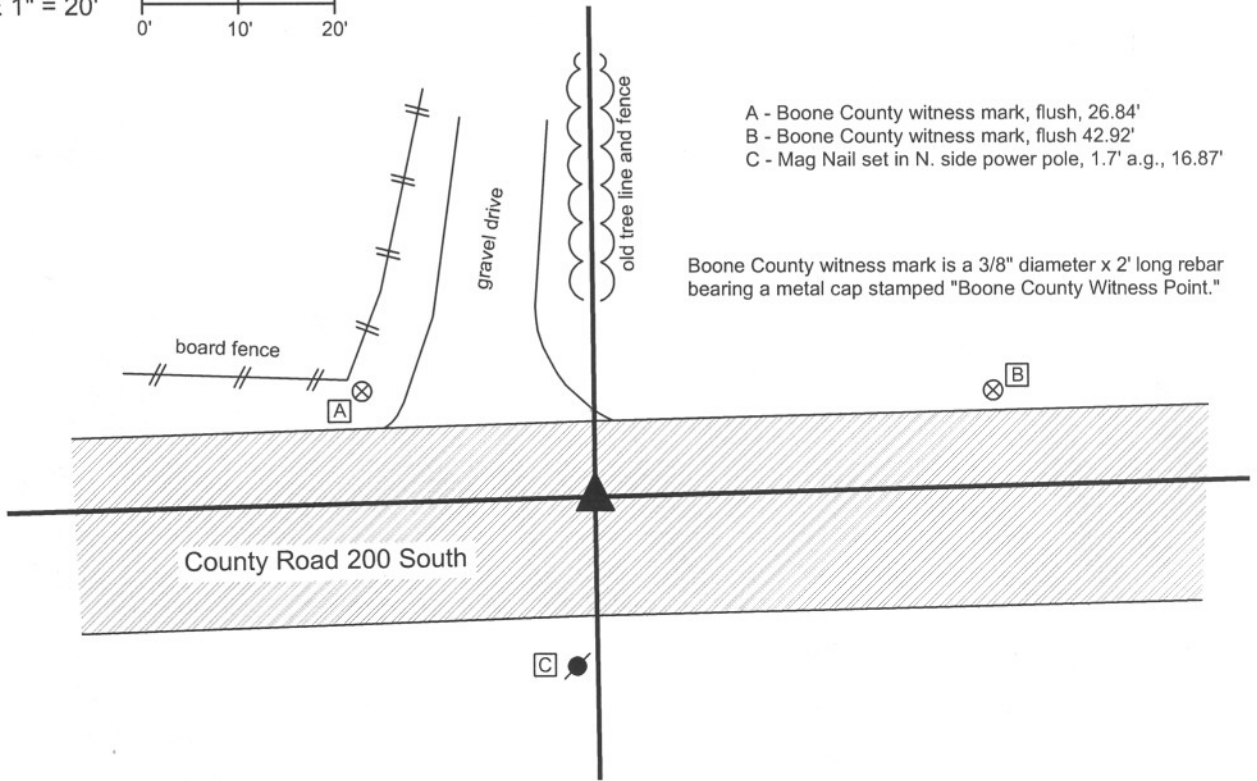
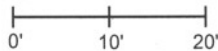
Type of monument: Harrison, 4" disk 'Section Corner'
 Depth: flush with adjacent road surface

Indiana tie card references:
 IN02_T18NR2E08_80 IN02_T18NR2E09_72
 IN02_T18NR2E16_00 IN02_T18NR2E17_08



CORNER WITNESS DETAIL

SCALE 1" = 20'



- A - Boone County witness mark, flush, 26.84'
- B - Boone County witness mark, flush 42.92'
- C - Mag Nail set in N. side power pole, 1.7' a.g., 16.87'

Boone County witness mark is a 3/8" diameter x 2' long rebar bearing a metal cap stamped "Boone County Witness Point."

The harrison monument was set in place of a 1/2 inch rebar found. A BCS tie card dated June 5, 1991 calls for a 1/2 inch rebar found, 0.3 foot below grade, approximately 2 feet north of the center of County Road 200 South and in line with the fences to the north and south. No other BCS records were found for this corner beyond the original establishment of the corner by federal surveyors. This corner was excavated on April 7, 2008. Prior to excavation, the 1/2 inch rebar was visible in hole in the asphalt, 9 inches below grade, in line with the fence line to the north. The fence to the south is no longer present. The rebar was removed and no other monuments were found during excavation. The area of excavation was 4 feet east-west, centered on the rebar and 5 1/2 feet north-south, extended 2 feet north and 3 1/2 feet south of the rebar, excavated to a depth of 18 inches. The clay layer begins at 12 inches. The harrison was set in the position of the rebar, flush with the adjacent road. This corner was originally established as a wood post in July, 1821.



Kenneth E. Hedge
 Kenneth E. Hedge, County Surveyor

James S. Swift
 James S. Swift, IN LS 20200054

March 11, 2009

Worth Township Union Township

Section 8 T18N, R2E	Section 9 T18N, R2E
Section 17 T18N, R2E	Section 16 T18N, R2E

SECTION CORNER RECORD

BOONE COUNTY SURVEYOR'S OFFICE

SE 200-850

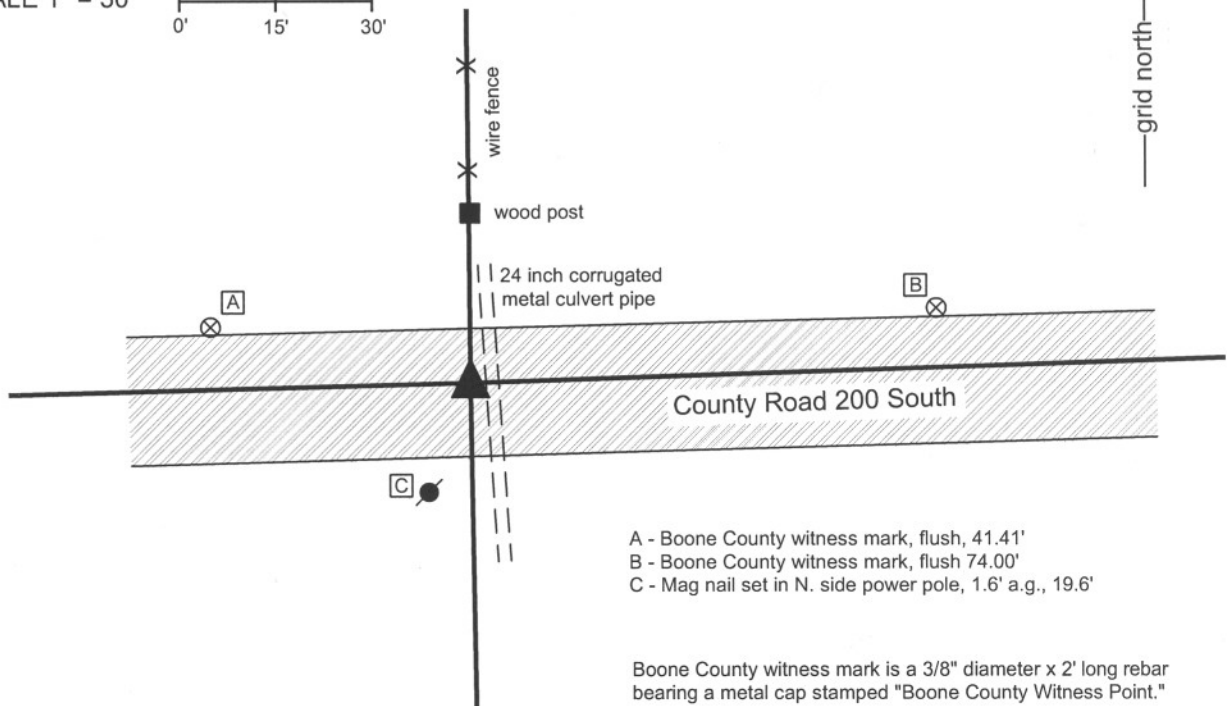
State Plane grid coordinates NAD83 (NSRS 2007):
 North: 1736092.90 East: 3169879.18 (U.S. survey feet)

Type of monument: Harrison, 4" disk 'Section Corner'
 Depth: Flush with road surface

Indiana tie card references:
 IN02_T18NR2E09_76
 IN02_T18NR2E16_04

CORNER WITNESS DETAIL

SCALE 1" = 30'



- A - Boone County witness mark, flush, 41.41'
- B - Boone County witness mark, flush 74.00'
- C - Mag nail set in N. side power pole, 1.6' a.g., 19.6'

Boone County witness mark is a 3/8" diameter x 2' long rebar bearing a metal cap stamped "Boone County Witness Point."

The harrison monument was set in place of a 1/2 inch rebar found. No BCS stone records or tie cards are known to exist for this corner. The origin of the rebar is not known. It was found in the approximate center of County Road 200 South in line with an old fence to the north, 8 inches below the grade of the adjacent surface. The rebar fits generally well with proximate corners and represents the commonly held monument for private surveys in this vicinity. Due to the fact that this corner falls in fill and is adjacent to a large culvert pipe, it is not likely that a corner stone would be found. Any corner stone which may have existed was likely removed during the installation of the culvert, hence substantial exploratory excavation was not performed. The rebar was removed and the harrison was set flush with the road surface at the position of the rebar on May 12, 2008. This corner was originally established as a wood post in July, 1821.

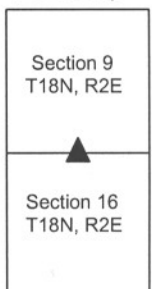


Kenneth E. Hedge
 Kenneth E. Hedge, County Surveyor

James S. Swift
 James S. Swift, IN LS 20200054

March 11, 2009

Union Township



SECTION CORNER RECORD

SE 200-900

BOONE COUNTY SURVEYOR'S OFFICE

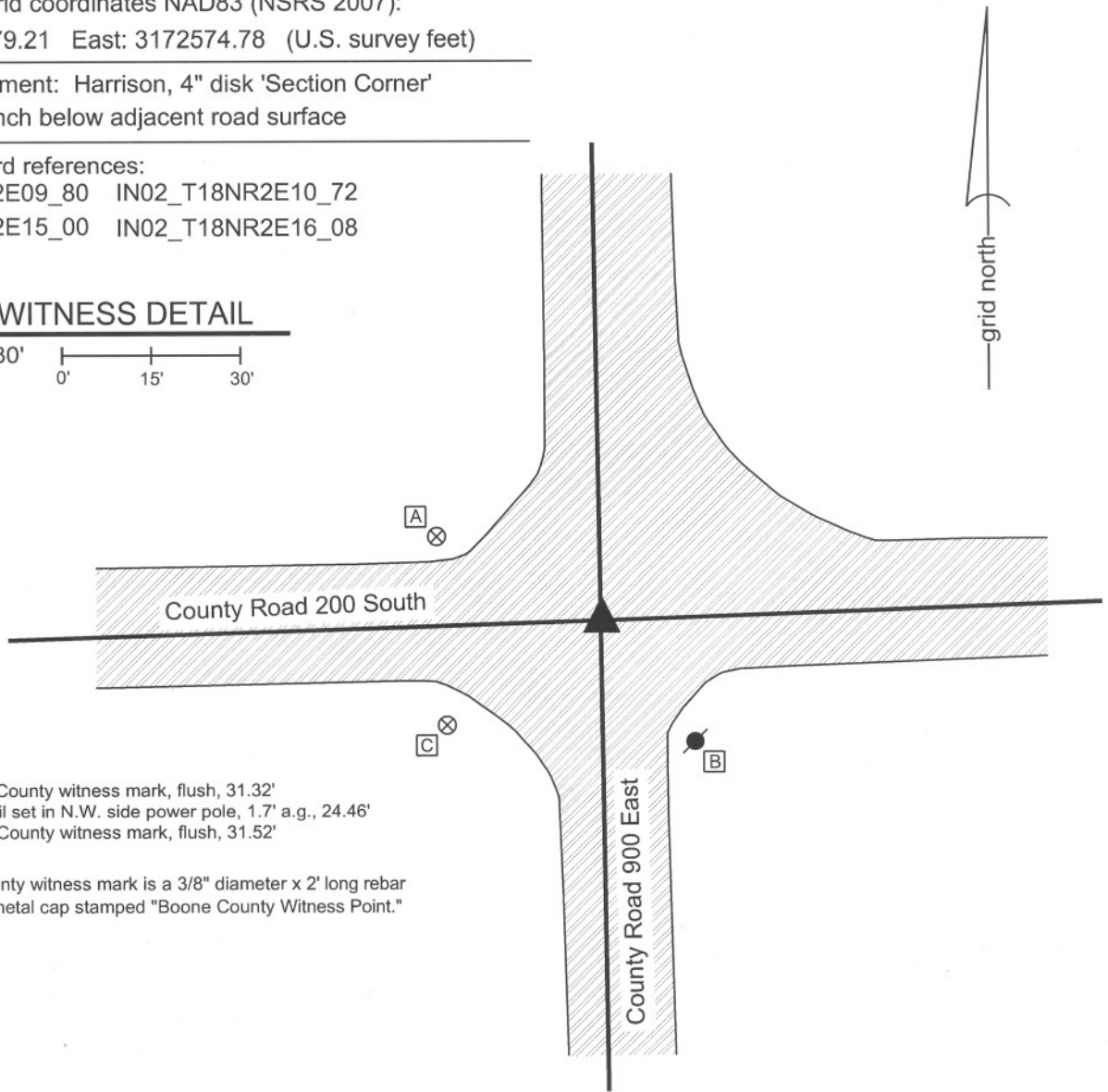
State Plane grid coordinates NAD83 (NSRS 2007):
North: 1736179.21 East: 3172574.78 (U.S. survey feet)

Type of monument: Harrison, 4" disk 'Section Corner'
Depth: One inch below adjacent road surface

Indiana tie card references:
IN02_T18NR2E09_80 IN02_T18NR2E10_72
IN02_T18NR2E15_00 IN02_T18NR2E16_08

CORNER WITNESS DETAIL

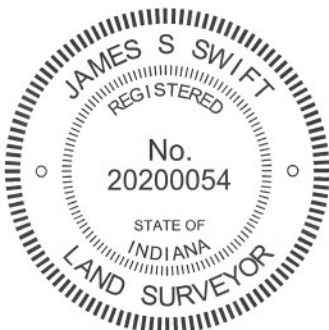
SCALE 1" = 30'
0' 15' 30'



- A - Boone County witness mark, flush, 31.32'
- B - Mag nail set in N.W. side power pole, 1.7' a.g., 24.46'
- C - Boone County witness mark, flush, 31.52'

Boone County witness mark is a 3/8" diameter x 2' long rebar bearing a metal cap stamped "Boone County Witness Point."

The harrison monument was set in place of a railroad rail found. A BCS record on October 24, 1892 states "found both corner rocks + wit." (No record was found for any known corner stones prior to 1892). A BCS tie card dated October 11, 1968 states "no stone." This corner was excavated on June 2, 2008. Prior to excavation, a mag nail was visible at the surface. Excavation yielded a 5/8 inch rebar with a metal cap at 7 inches. Further excavation yielded a railroad rail at 9 inches. The rebar was situated against the south side of the rail. Both monuments were below and slightly north of the mag nail. Further excavation of an area 4.5 feet N-S by 8 feet E-W extending 4.5 feet west and 2.5 feet north of the rail yielded no more monuments. The record stone was not found. The harrison was set in the position of the railroad rail (removed during excavation), 0.14 of a foot north of the position of the mag nail (also removed during excavation). This corner was originally established as wood post in July, 1821.



Kenneth E. Hedge
Kenneth E. Hedge, County Surveyor

James S. Swift
James S. Swift, IN LS 20200054
March 18, 2009, Revised April 30, 2012

Union Township

Section 9 T18N, R2E	Section 10 T18N, R2E
Section 16 T18N, R2E	Section 15 T18N, R2E