

# SECTION CORNER RECORD

SE 700-800

## BOONE COUNTY SURVEYOR'S OFFICE

State Plane grid coordinates NAD83 (NSRS 2007):  
North: 1709301.80 East: 3167716.65 (U.S. survey feet)

Type of monument: Harrison, 4" disk 'Section Corner'  
Depth: Flush with road surface

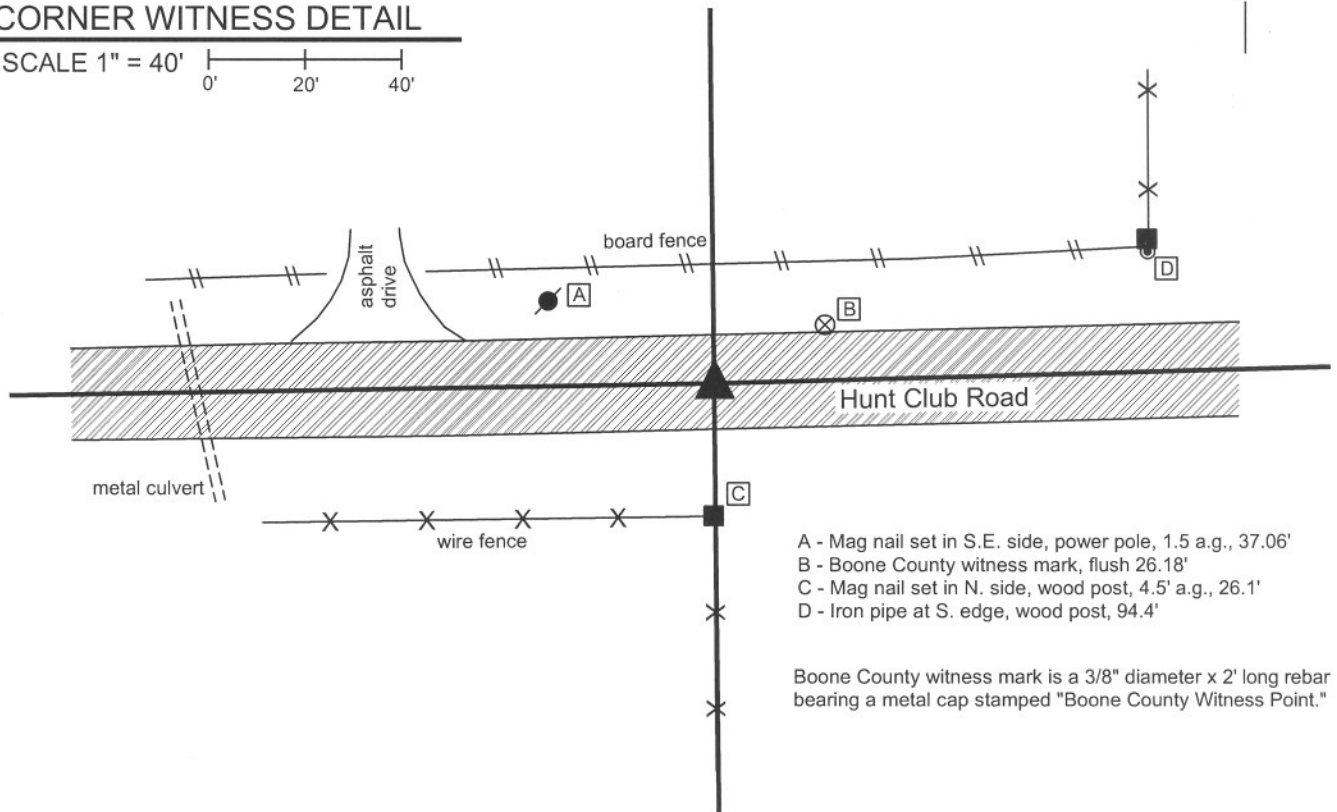
Indiana tie card references:  
IN02\_T17NR2E04\_72 IN02\_T17NR2E05\_80  
IN02\_T17NR2E08\_08 IN02\_T17NR2E09\_00



### CORNER WITNESS DETAIL

SCALE 1" = 40'

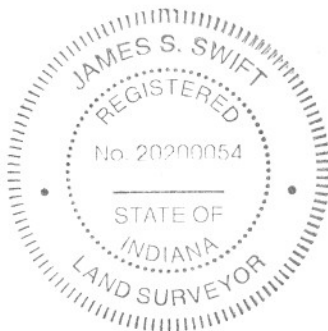
0' 20' 40'



- A - Mag nail set in S.E. side, power pole, 1.5 a.g., 37.06'
- B - Boone County witness mark, flush 26.18'
- C - Mag nail set in N. side, wood post, 4.5' a.g., 26.1'
- D - Iron pipe at S. edge, wood post, 94.4'

Boone County witness mark is a 3/8" diameter x 2' long rebar bearing a metal cap stamped "Boone County Witness Point."

The Harrison monument was set directly over a railroad rail found on end, the top of which is 13 inches below the surface of the road. The railroad rail is shown as being set in April, 1970. A P.K. nail was found above the rail and was removed in the process of setting the Harrison monument. No reference to a stone was found in the county records. This is an area of substantial fill for the roadway and significant excavation was not performed at this site. This corner was originally established in July, 1821.



*Kenneth E. Hedge*  
Kenneth E. Hedge, County Surveyor

*J. S. Swift*  
James S. Swift, IN LS 20200054  
December 21, 2007

Eagle Township

Section 5 T17N, R2E	Section 4 T17N, R2E
Section 8 T17N, R2E	Section 9 T17N, R2E

# SECTION CORNER RECORD

SE 700-850

## BOONE COUNTY SURVEYOR'S OFFICE

State Plane grid coordinates NAD83 (NSRS 2007):  
North: 1709371.51 East: 3170363.57 (U.S. survey feet)

Type of monument: Harrison, 4" disk 'Section Corner'  
Depth: 0.1' below adjacent road surface

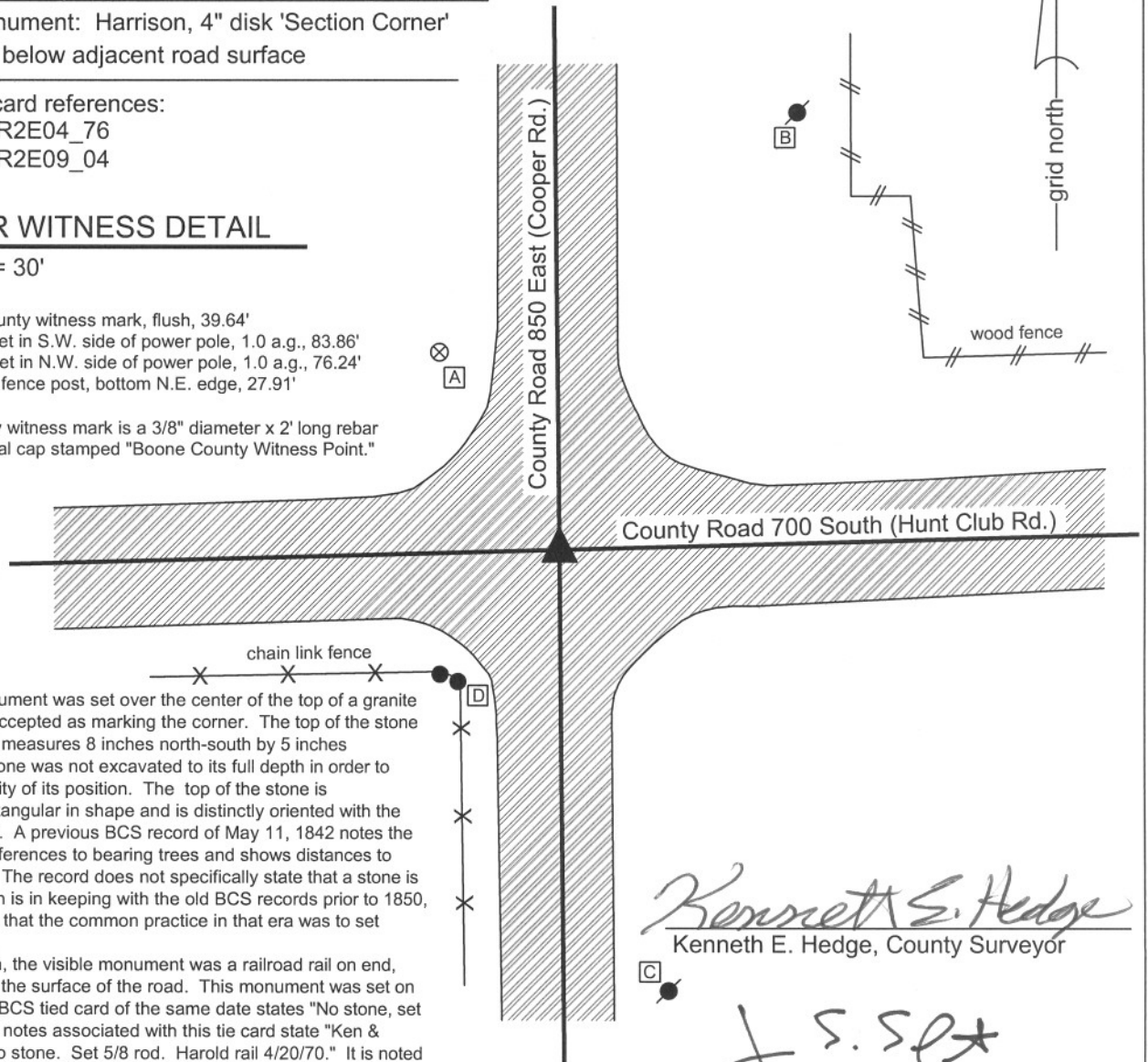
Indiana tie card references:  
IN02\_T17NR2E04\_76  
IN02\_T17NR2E09\_04

### CORNER WITNESS DETAIL

SCALE 1" = 30'

- A - Boone County witness mark, flush, 39.64'
- B - Mag nail set in S.W. side of power pole, 1.0 a.g., 83.86'
- C - Mag nail set in N.W. side of power pole, 1.0 a.g., 76.24'
- D - Chain link fence post, bottom N.E. edge, 27.91'

Boone County witness mark is a 3/8" diameter x 2' long rebar bearing a metal cap stamped "Boone County Witness Point."



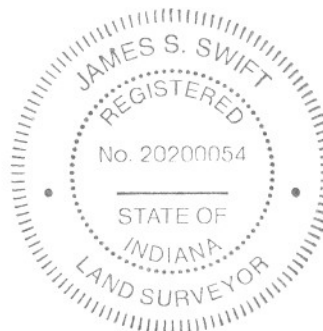
The Harrison monument was set over the center of the top of a granite stone found and accepted as marking the corner. The top of the stone is 2 feet deep and measures 8 inches north-south by 5 inches east-west. The stone was not excavated to its full depth in order to maintain the stability of its position. The top of the stone is approximately rectangular in shape and is distinctly oriented with the cardinal directions. A previous BCS record of May 11, 1842 notes the corner, calls for references to bearing trees and shows distances to adjacent corners. The record does not specifically state that a stone is at the corner which is in keeping with the old BCS records prior to 1850, though it is known that the common practice in that era was to set stones at corners.

Prior to excavation, the visible monument was a railroad rail on end, nine inches below the surface of the road. This monument was set on April 20, 1970. A BCS tied card of the same date states "No stone, set 5/8 rail." The field notes associated with this tie card state "Ken & Harold, 2/10/70, no stone. Set 5/8 rod. Harold rail 4/20/70." It is noted that the rail was very close to the stone, with the center of the rail driven approximately 8 1/2 inches north and west of the top, center of the stone. Inspection of the dirt on the south edge of the hole, adjacent to the stone yields the evidence that at least 5 inches of undisturbed dirt was above the stone, indicating that the 1970 excavation did not extend to the depth of the stone. The rail was driven next to the stone, barely missing the northwest edge. The written evidence on the field notes of "no stone, set 5/8 rod" indicate that the rod, and subsequently rail, were established due to the lack of presence of a stone. Clearly a stone was present, but not found.

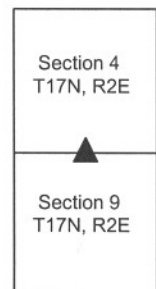
The stone is accepted as the best evidence of the original location of the corner and was held and monumented as marking the corner. The railroad rail was removed during excavation. It is noted that the center of mass of the top of the rail, being the approximate center of the thin portion of the rail between the rail and the base, was 0.5' N and 0.5' W of the top, center of the stone. The railroad rail is known to have been held as the corner for numerous surveys in the area and its position is noted to facilitate retracement of those surveys which are tied to it. A 1/2 inch I.D. iron pipe was also found 1.2' N and 0.5' W of the stone. No documentation was found for this pipe, which was also removed during excavation.

*Kenneth E. Hedge*  
Kenneth E. Hedge, County Surveyor

*J. S. Swift*  
James S. Swift, IN LS 20200054  
February 1, 2008



Eagle Township



## PHOTOGRAPHIC DOCUMENTATION

Date of photography: 11/07/2007

Photograph of the found stone. The photo is taken from the north side of the hole, looking down and south. The top of the stone is 24 inches below the surface of the road and measures 8 inches (N-S) by 5 inches (E-W). A Harrison monument was set directly above the top, center of the stone.



Photograph of the found stone, washed. The vertical rod shown next to the stone represents the reconstructed position the 30 inch length of railroad rail which was set in 1970 and removed during excavation of the stone. The rail was approximately 8 inches north and west of the stone. The horizontal, intersecting strings shown represent the means by which the position of the rail was reconstructed.



Side view from the north, looking over the stone to the south edge of the hole. The horizontal rod is placed along the line between undisturbed base material and the loose fill material found in most of the hole. At least 5 inches of undisturbed base existed above and immediately south of the stone. It is apparent that the 1970 excavation did not extend to the depth of the stone and that the reference in the previous record of "no stone" was not correct.



# SECTION CORNER RECORD

SE 700-900

## BOONE COUNTY SURVEYOR'S OFFICE

State Plane grid coordinates NAD83 (NSRS 2007):  
North: 1709444.34 East: 3173021.29 (U.S. survey feet)

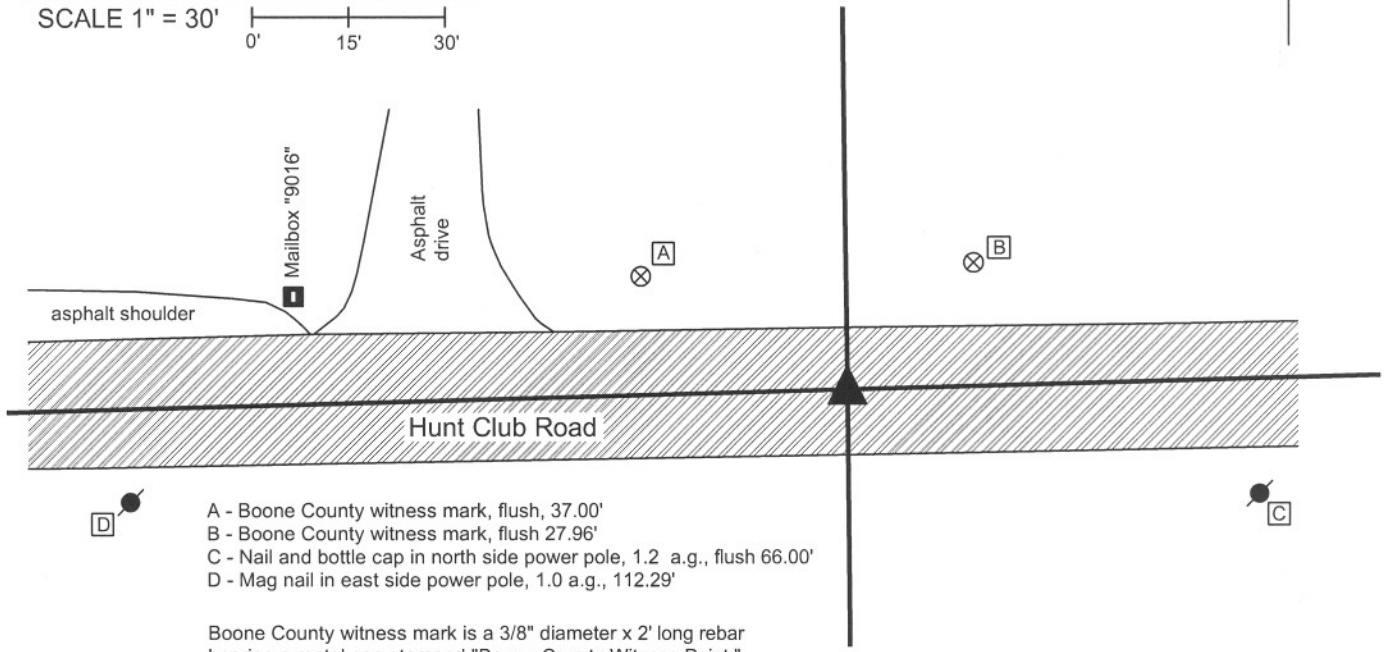
Type of monument: Harrison, 4" disk 'Section Corner'  
Depth: 1" below road surface

Indiana tie card references:  
IN02\_T17NR2E03\_72 IN02\_T17NR2E04\_80  
IN02\_T17NR2E09\_08 IN02\_T17NR2E10\_00



### CORNER WITNESS DETAIL

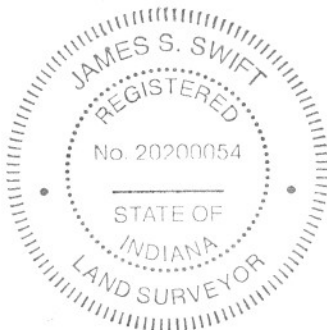
SCALE 1" = 30'  
0' 15' 30'



- A - Boone County witness mark, flush, 37.00'
- B - Boone County witness mark, flush 27.96'
- C - Nail and bottle cap in north side power pole, 1.2' a.g., flush 66.00'
- D - Mag nail in east side power pole, 1.0 a.g., 112.29'

Boone County witness mark is a 3/8" diameter x 2' long rebar bearing a metal cap stamped "Boone County Witness Point."

The Harrison monument was set in place of a railroad rail found, the top of which was 4 inches below the surface of the road. A previous tie card indicates that the rail was set in place of a stone found, April 1970. A black igneous stone was found during excavation, approximately 1.8 feet deep and 1.2 feet south and west of the rail. It is not clear whether this is the same stone which was previously found and displaced by the rail or whether this is a different stone. No record prior to 1970 was found for a stone at this corner. A 1 inch diameter iron pipe with a nail driven in the top was found situated against the north side of the rail. The nail and top of the pipe were approximately 3 inches below the surface of the road and 0.1' north of the center of the top of the rail. Previous private surveys call for a mag nail, bolt and nail-in-pipe. The nail, pipe and rail were removed during excavation. This corner was originally established in July, 1821.



*Kenneth E. Hedge*  
Kenneth E. Hedge, County Surveyor

*J. S. Swift*  
James S. Swift, IN LS 20200054  
December 21, 2007

Eagle Township

Section 4 T17N, R2E	Section 3 T17N, R2E
Section 9 T17N, R2E	Section 10 T17N, R2E

PHOTOGRAPHIC DOCUMENTATION

Date of photography: 11/09/2007

Photograph of iron pipe with nail in it and railroad rail. BCS records from April, 1970 state that a found stone was replaced with a railroad rail. The photograph is oriented with north towards the top of the page. The top of the iron pipe was 3 inches below the surface of the road and the top of the rail was 4 inches below the surface of the road. The Harrison monument was set in the position of the approximate center of mass of the top of the rail, being the approximate midpoint of the skinny section between the track and the base.



Black igneous stone found south and slightly west of the rail. This stone was found at 1.8 feet deep and was left in place. It is not known whether this is the same stone found and replaced with the rail in April 1970, or whether this is a different stone.

black igneous stone



# SECTION CORNER RECORD

# SE 750-800

## BOONE COUNTY SURVEYOR'S OFFICE

State Plane grid coordinates NAD83 (NSRS 2007):  
North: 1706646.10 East: 3167747.89 (U.S. survey feet)

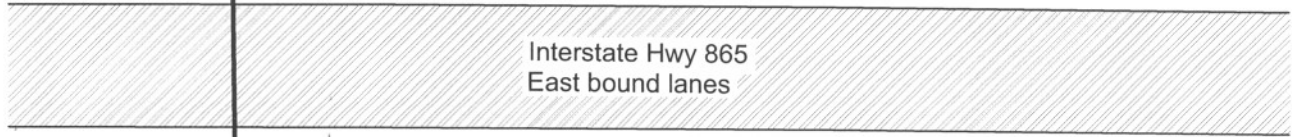
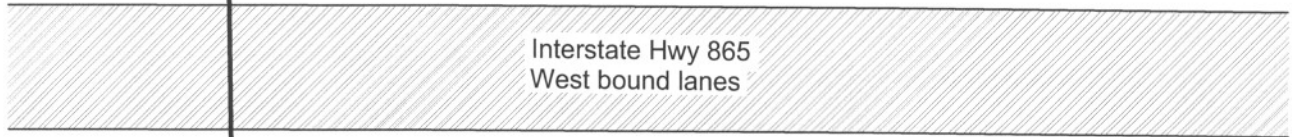
Type of monument: 5/8 inch diameter rebar with no cap.  
Depth: 3 inches above adjoining grade.

Indiana tie card references:  
IN02\_T17NR2E08\_44  
IN02\_T17NR2E09\_36

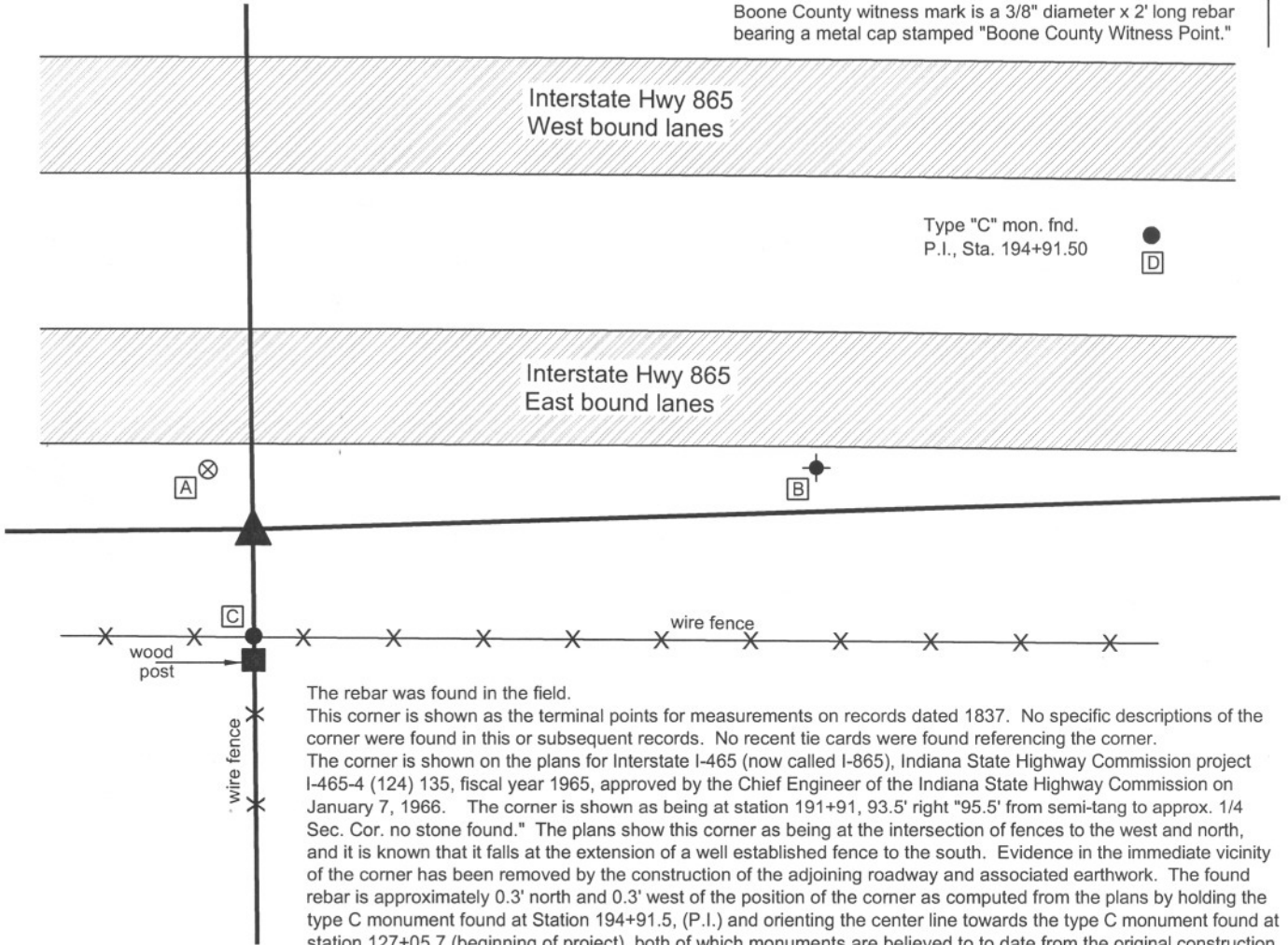
### CORNER WITNESS DETAIL

SCALE 1" = 60'  
0' 30' 60'

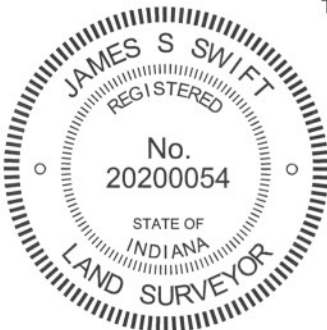
- A - Boone County witness mark, flush, 24.88'
  - B - W. edge, bottom, Metal sign post mile marker "2", 188.17'
  - C - 5/8" rebar with metal cap "Carl Anderson, Engr", 35.56'
  - D - Brass plug in concrete, Type C Mon., flush, 316.78'
- Boone County witness mark is a 3/8" diameter x 2' long rebar bearing a metal cap stamped "Boone County Witness Point."



Type "C" mon. fnd.  
P.I., Sta. 194+91.50

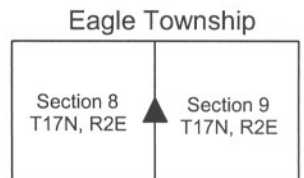


The rebar was found in the field. This corner is shown as the terminal points for measurements on records dated 1837. No specific descriptions of the corner were found in this or subsequent records. No recent tie cards were found referencing the corner. The corner is shown on the plans for Interstate I-465 (now called I-865), Indiana State Highway Commission project I-465-4 (124) 135, fiscal year 1965, approved by the Chief Engineer of the Indiana State Highway Commission on January 7, 1966. The corner is shown as being at station 191+91, 93.5' right "95.5' from semi-tang to approx. 1/4 Sec. Cor. no stone found." The plans show this corner as being at the intersection of fences to the west and north, and it is known that it falls at the extension of a well established fence to the south. Evidence in the immediate vicinity of the corner has been removed by the construction of the adjoining roadway and associated earthwork. The found rebar is approximately 0.3' north and 0.3' west of the position of the corner as computed from the plans by holding the type C monument found at Station 194+91.5, (P.I.) and orienting the center line towards the type C monument found at station 127+05.7 (beginning of project), both of which monuments are believed to date from the original construction of the highway. Variations of up to one foot in all directions were found with respect to the relative positions of these monuments and numerous other centerline control points found along the highway. Hence, the position of the rebar matches the station within the general uncertainty of control shown on the plans, though it does not precisely match the station relative to the nearest original centerline control monument. The rebar was held as the corner. This corner was originally established as a wood post in 1821.



Kenneth E. Hedge, County Surveyor

James S. Swift, IN LS 20200054  
July 25, 2011



# SECTION CORNER RECORD

SE 750-900

## BOONE COUNTY SURVEYOR'S OFFICE

State Plane grid coordinates NAD83 (NSRS 2007):

North: 1706805.36 East: 3173044.10 (U.S. survey feet)

Type of monument: Stone (top center)

Depth: flush with adjacent ground

Indiana tie card references:

IN02\_T17NR2E09\_44

IN02\_T17NR2E10\_36

### CORNER WITNESS DETAIL

SCALE 1" = 30'

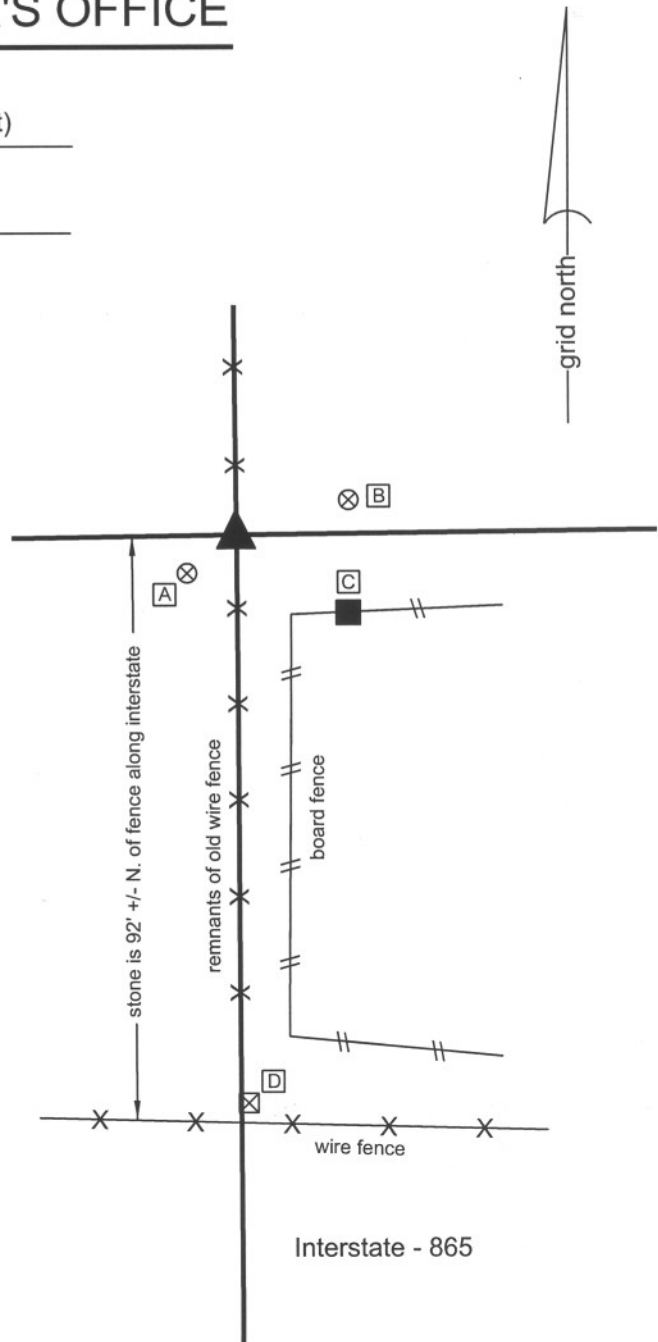


- A - Boone County witness mark, flush, 9.74'
- B - Boone County witness mark, flush, 18.24'
- C - Mag nail set in N.E. corner wood post, 2.0' a.g., 20.9'
- D - Plug in concrete monument, 0.2' a.g., 88.78'

Boone County witness mark is a 3/8" diameter x 2' long rebar bearing a metal cap stamped "Boone County Witness Point."

The stone was found in place.

No specific description of this stone was found in the BCS Surveyor's Record, though it is mentioned as the terminal point for measurements in records of 1837 and 1912. No recent BCS tie cards were found referencing this corner. The corner is shown as a stone on the plans for Interstate 465 (now called Interstate 865), dated fiscal year 1965. Refer to Project No. I-465-4 (124) 135, sheet 16 of 325. The found stone fits well with the position shown on the plans relative to centerline monumentation. The corner is shown as a stone on the plat of Irishmen's Run and on numerous private surveys. The stone was exposed and witnessed on June 9, 2009. With the top 12 inches exposed the stone measures 6 inches N-S by 4 inches E-W and remains entirely stable in the ground, indicating that the vertical dimension continues into the ground. The stone has smooth vertical grooves along both the north and south sides and a distinct high point. The high point was held as the specific location of the corner and the stone was left in place. This corner was originally established as a wood post in July, 1821.



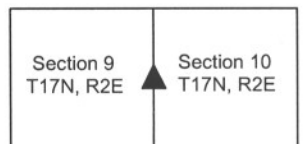
*Kenneth E. Hedge*  
Kenneth E. Hedge, County Surveyor

*James S. Swift*

James S. Swift, IN LS 20200054

July 14, 2010

Eagle Township



PHOTOGRAPHIC DOCUMENTATION  
Date of photography: Various (see below)

View of the stone prior to excavation on 4/27/2009.



The stone after minor excavation on 4/27/2009.



The stone and witness lathe on 6/9/2009.



The stone on 5/12/2009.



The stone with the top portion exposed on 6/9/2009.



For details and documentation, refer to related sheet "Section Corner Record."



# SECTION CORNER RECORD

SE 800-800

## BOONE COUNTY SURVEYOR'S OFFICE

State Plane grid coordinates NAD83 (NSRS 2007):  
North: 1704015.27 East: 3167772.18 (U.S. survey feet)

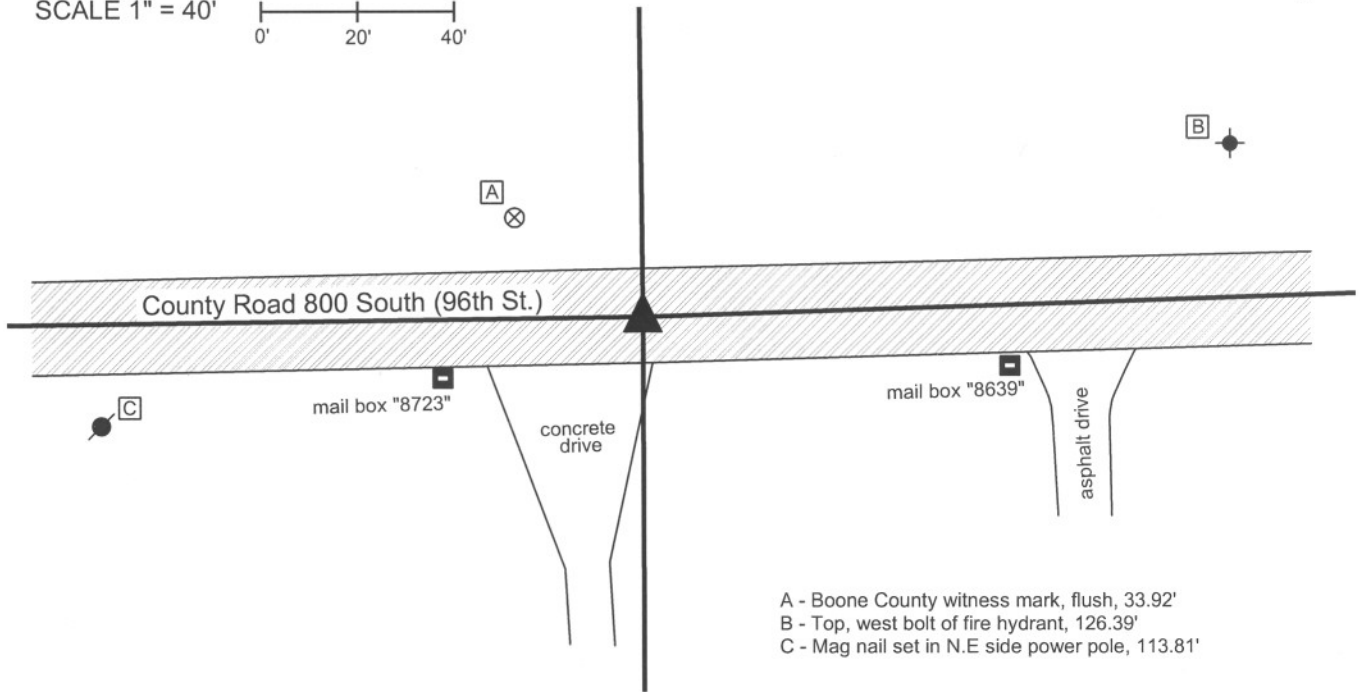
Type of monument: Rebar with Marion County Surveyor's Office cap  
Depth: Two inches below adjacent road surface

Indiana tie card references:  
IN02\_T17NR2E08\_80  
IN02\_T17NR2E09\_72



### CORNER WITNESS DETAIL

SCALE 1" = 40'



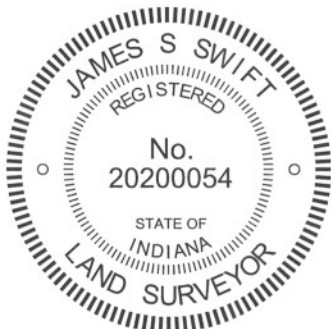
- A - Boone County witness mark, flush, 33.92'
- B - Top, west bolt of fire hydrant, 126.39'
- C - Mag nail set in N.E. side power pole, 113.81'

Boone County witness mark is a 3/8" diameter x 2' long rebar bearing a metal cap stamped "Boone County Witness Point."

The capped rebar was found in place.

No specific descriptions of this corner were found in the BCS Surveyor's Record beyond the original establishment of the corner as a wood post in 1821. A BCS tie card dated April 6, 1970 states "No stone. Set RRR." The corner has been referenced by the Marion County Surveyor's Office repeatedly. 1977 MCSO references call for a rebar. In 1981 the corner was excavated by MCSO and no stone or sub-surface mark was found. A rebar was set. Subsequent references call for a rebar.

The found capped rebar was held as marking the corner. No recent excavation was performed by the Boone County Surveyors Office at this corner.



*Kenneth E. Hedge*  
Kenneth E. Hedge, County Surveyor

*James S. Swift*  
James S. Swift, IN LS 20200054  
March 30, 2012

Eagle Twp  
Boone Cnty

Pike Twp  
Marion Cnty

Section 8 T17N, R2E	Section 9 T17N, R2E
Section 17 T17N, R2E	Section 16 T17N, R2E

# SECTION CORNER RECORD

SE 800-850

## BOONE COUNTY SURVEYOR'S OFFICE

State Plane grid coordinates NAD83 (NSRS 2007):  
North: 1704099.96 East: 3170415.01 (U.S. survey feet)

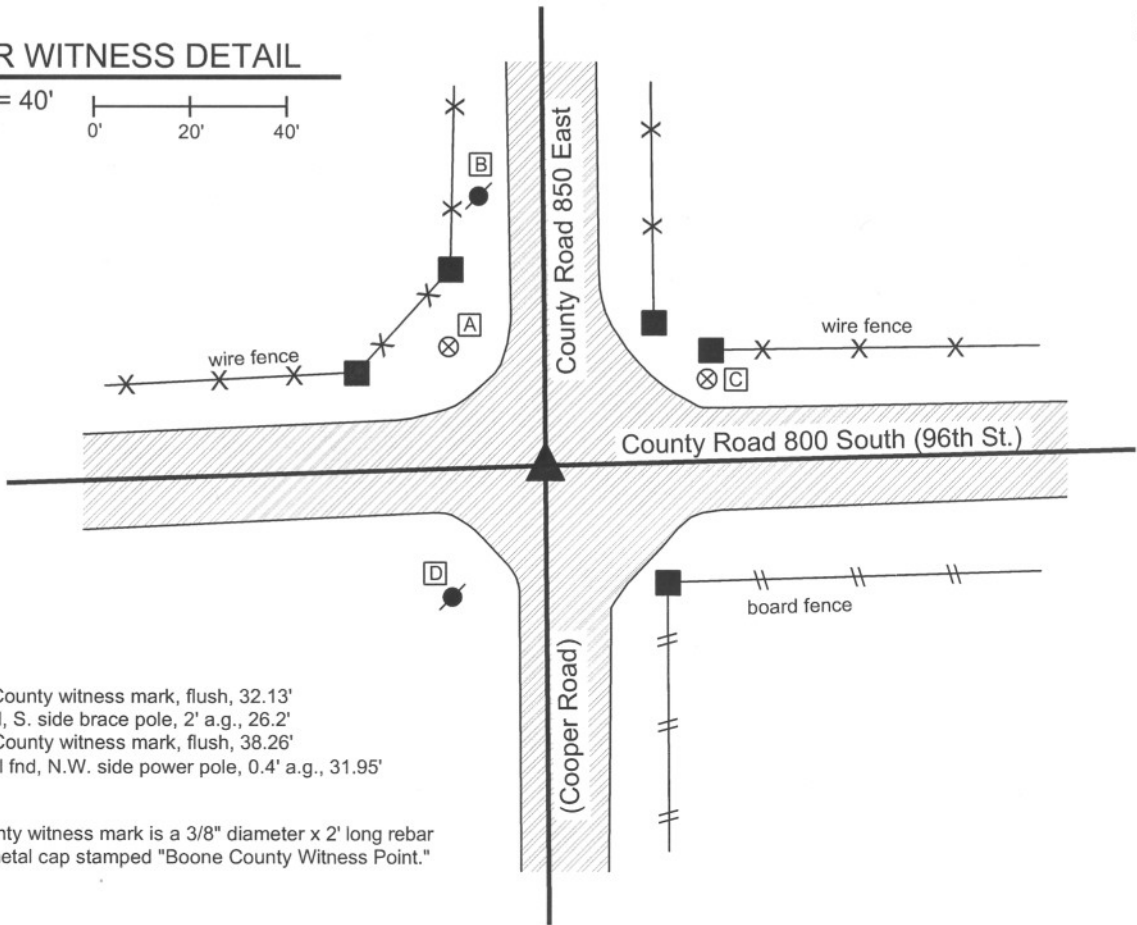
Type of monument: Harrison, 4" disk 'Section Corner'  
Depth: flush with adjacent road surface

Indiana tie card reference:  
IN02\_T17NR2E09\_76



### CORNER WITNESS DETAIL

SCALE 1" = 40'

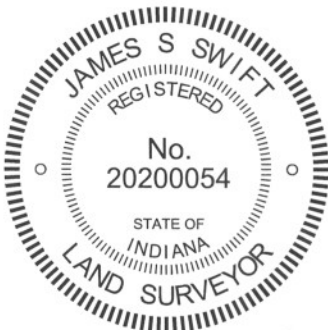


- A - Boone County witness mark, flush, 32.13'
- B - Mag nail, S. side brace pole, 2' a.g., 26.2'
- C - Boone County witness mark, flush, 38.26'
- D - Mag nail fnd, N.W. side power pole, 0.4' a.g., 31.95'

Boone County witness mark is a 3/8" diameter x 2' long rebar bearing a metal cap stamped "Boone County Witness Point."

The harrison monument was found in place.

No specific descriptions of this corner were found in the BCS Surveyor's Record beyond the original establishment of the corner as a wood post in 1821. An undated BCS tie card has been on file referencing this corner, but does not appear to actually address this particular corner. The corner has been referenced by the Marion County repeatedly, as documented in a tie card provided by the Marion County Surveyor's Office, dated June 30, 2010. Marion County references from 1945 call for an iron pin. 1990 references call for a 2 inch iron pin 12 inches long, 5 inches down, no stone found, harrison set. Subsequent references call for the harrison monument. Recent excavation was not performed at this corner by the Boone County Surveyor's Office. The harrison monument was held as marking the corner, per the documented history on the Marion County tie cards.

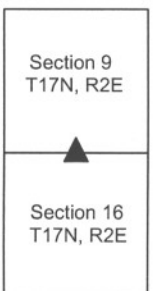


*Kenneth E. Hedge*  
Kenneth E. Hedge, County Surveyor

*James S. Swift*  
James S. Swift, IN LS 20200054  
March 30, 2012

Eagle Township  
Boone County

Pike Township  
Marion County



# SECTION CORNER RECORD

SE 800-900

## BOONE COUNTY SURVEYOR'S OFFICE

State Plane grid coordinates NAD83 (NSRS 2007):  
 North: 1704172.98 East:3173059.47 (U.S. survey feet)

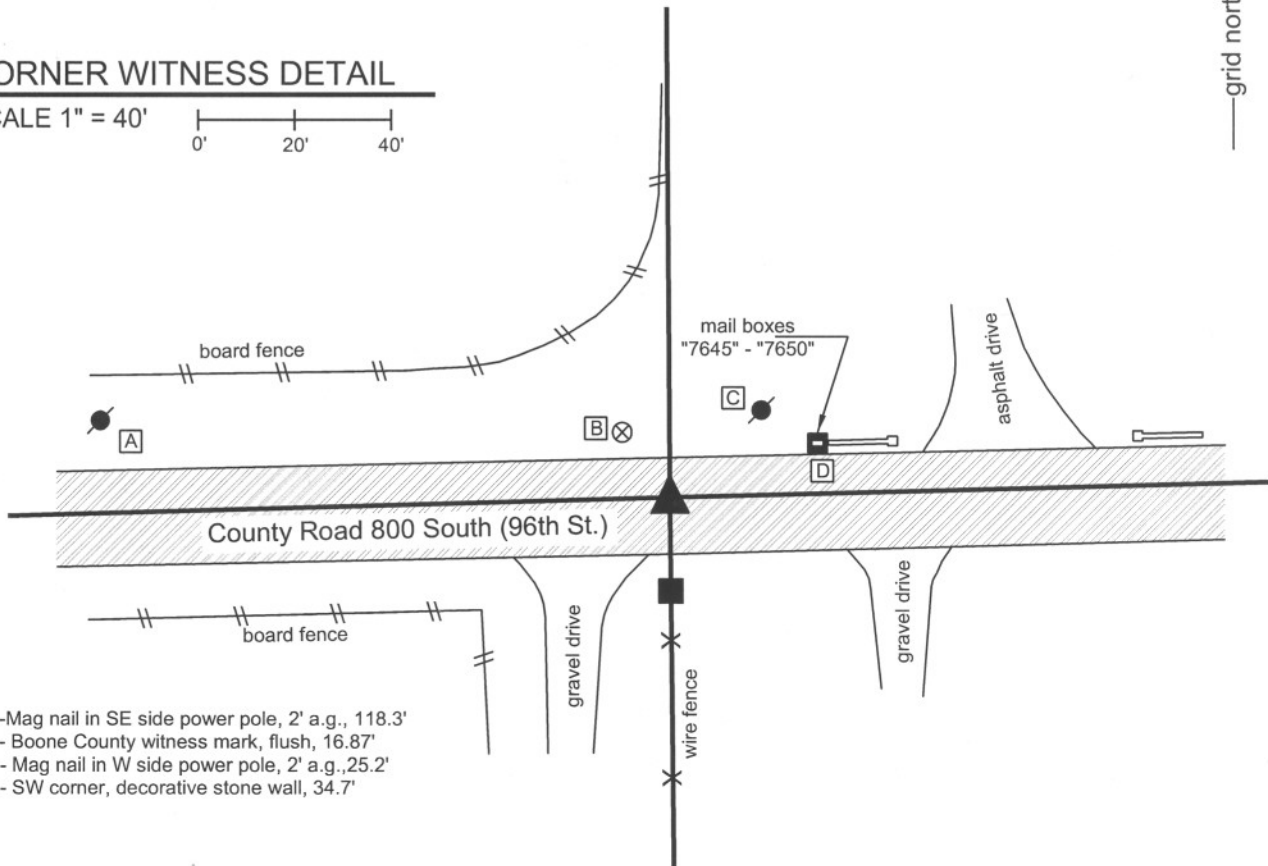
Type of monument: Harrison, 4" disk 'Section Corner'  
 Depth: flush with road surface

Indiana tie card references:  
 IN02\_T17NR2E09\_80 IN02\_T17NR2E10\_72  
 IN02\_T17NR2E15\_00 IN02\_T17NR2E16\_08



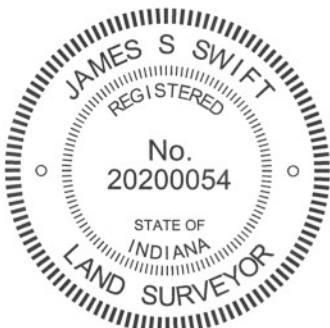
### CORNER WITNESS DETAIL

SCALE 1" = 40'



- A - Mag nail in SE side power pole, 2' a.g., 118.3'
- B - Boone County witness mark, flush, 16.87'
- C - Mag nail in W side power pole, 2' a.g., 25.2'
- D - SW corner, decorative stone wall, 34.7'

The harrison monument was found in place.  
 No specific descriptions of this corner were found in the BCS Surveyor's Record beyond the original establishment of the corner as a wood post in 1821. Marion County tie cards call for a reference to a stone at the corner in 1849. They call for the stone found 4 inches down in 1945 and a PK nail with washer over the stone in 1980. The Marion County Surveyor's Office excavated the corner in 1997, found the stone 6 inches down and set the harrison monument over the stone.  
 The harrison monument over the stone was accepted as marking the corner.



*Kenneth E. Hedge*  
 Kenneth E. Hedge, County Surveyor

Eagle Twp  
 Boone Cnty

*James S. Swift*  
 James S. Swift, IN LS 20200054  
 March 30, 2012

Pike Twp  
 Marion Cnty

Section 9 T17N, R2E	Section 10 T17N, R2E
Section 16 T17N, R2E	Section 15 T17N, R2E