

SECTION CORNER RECORD

SE 700-200

BOONE COUNTY SURVEYOR'S OFFICE

State Plane grid coordinates NAD83 (NSRS 2007):

North: 1708787.78 East: 3135641.52 (U.S. survey feet)

Type of monument: Harrison, 4" disk 'Section Corner'

Depth: One inch below adjacent road surface

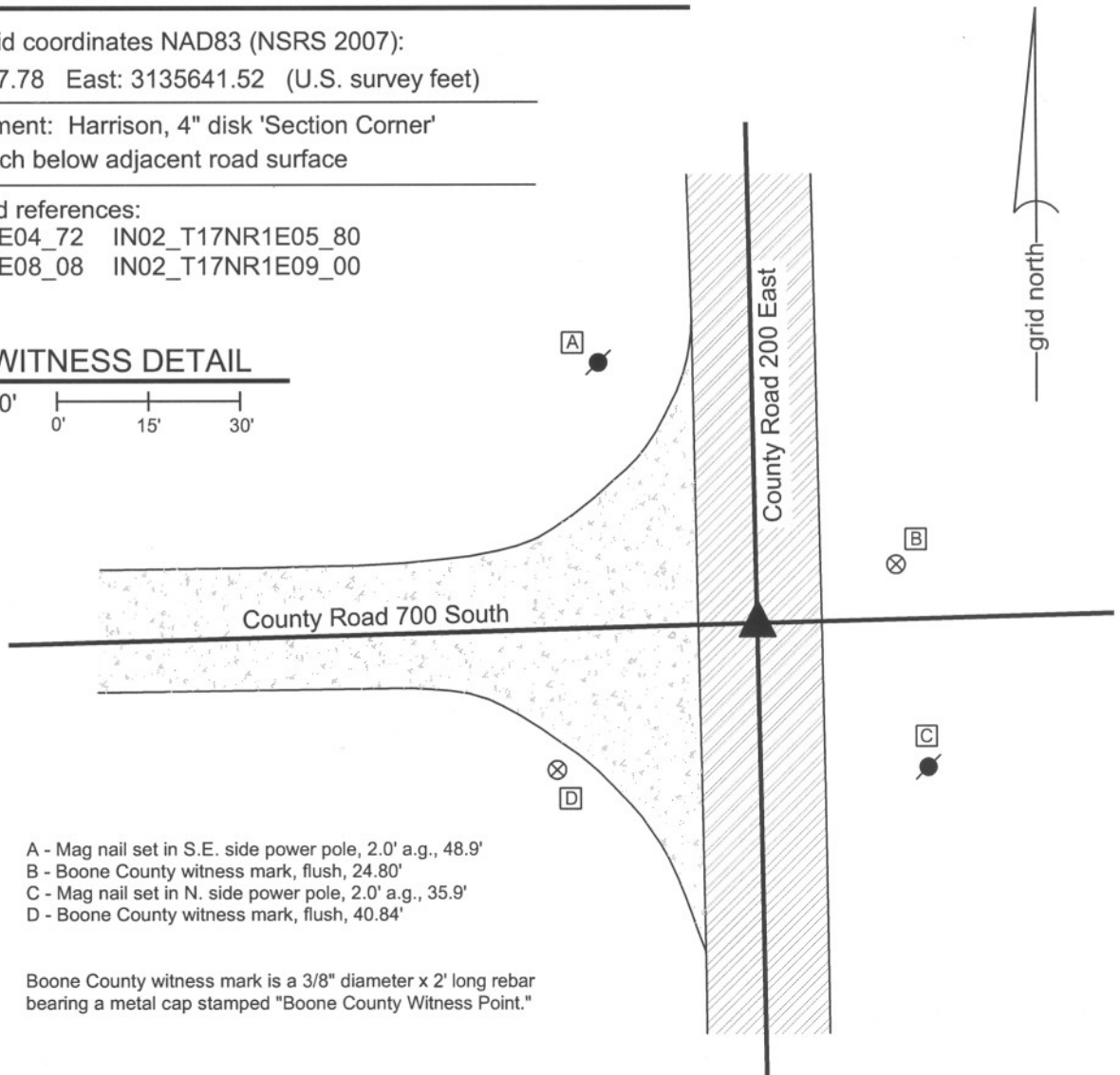
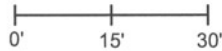
Indiana tie card references:

IN02_T17NR1E04_72 IN02_T17NR1E05_80

IN02_T17NR1E08_08 IN02_T17NR1E09_00

CORNER WITNESS DETAIL

SCALE 1" = 30'

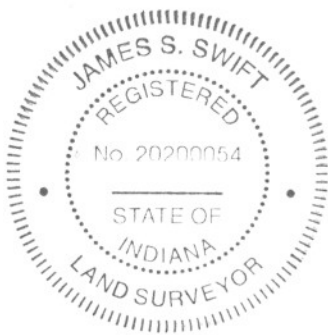


- A - Mag nail set in S.E. side power pole, 2.0' a.g., 48.9'
- B - Boone County witness mark, flush, 24.80'
- C - Mag nail set in N. side power pole, 2.0' a.g., 35.9'
- D - Boone County witness mark, flush, 40.84'

Boone County witness mark is a 3/8" diameter x 2' long rebar bearing a metal cap stamped "Boone County Witness Point."

The harrison monument was set in place of a railroad spike found.

A BCS record of March 5 & 6, 1868 states "Reestablished from stump of one tree. Rock marked +." A BCS tie card dated July 10, 1968 states "found stone." This corner was excavated by a private survey company in April, 2007, witnessed by the undersigned Land Surveyor. At that time, a railroad rail was found on end with a rebar adjacent to it. No stones were found. Both the rebar and the rail were removed and a railroad spike was set in place of the rail. Although the 1968 tie card simply states "found stone" it is known that it was common practice of BCS field crews from that era to remove a corner stone when found and replace it with a railroad rail on end. Hence, it is accepted that the position of the rail is the same as the position of the stone and it is known that the railroad spike replaced the rail. The railroad spike was removed on May 8, 2009 and replaced with a harrison monument. This corner was originally established as a wood post in June, 1820.



Kenneth E. Hedge
 Kenneth E. Hedge, County Surveyor

James S. Swift

James S. Swift, IN LS 20200054

July 14, 2010

Perry Township

| | |
|------------------------|------------------------|
| Section 5 T17N, R1E | Section 4 T17N, R1E |
| Section 8 T17N, R1E | Section 9 T17N, R1E |

SECTION CORNER RECORD

BOONE COUNTY SURVEYOR'S OFFICE

SE 700-250

State Plane grid coordinates NAD83 (NSRS 2007):
 North: 1708858.39 East: 3138284.30 (U.S. survey feet)

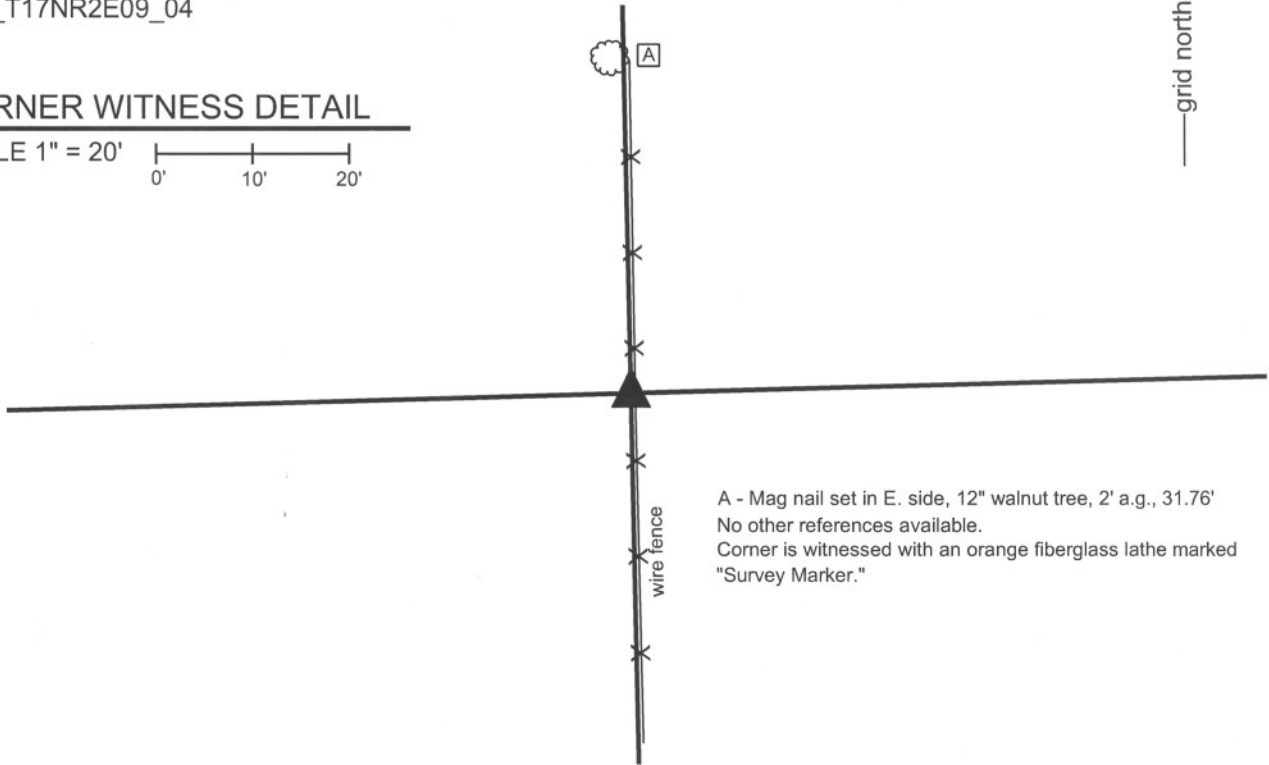
Type of monument: Harrison, 4" disk 'Section Corner'
 Depth: Three inches above the adjacent ground.

Indiana tie card references:
 IN02_T17NR2E04_76
 IN02_T17NR2E09_04



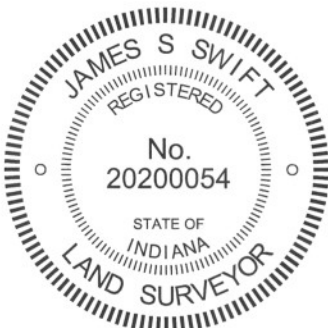
CORNER WITNESS DETAIL

SCALE 1" = 20'



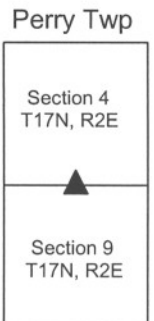
A - Mag nail set in E. side, 12" walnut tree, 2' a.g., 31.76'
 No other references available.
 Corner is witnessed with an orange fiberglass lathe marked "Survey Marker."

The harrison monument was set over a stone found and in place of another stone found.
 A BCS record of March 19, 1872 states "Reestablished from Elm. Set two Rocks. One 7,5,4 +. Top one 12,9,7 +." No modern BCS tie cards were found referencing this corner.
 This corner was excavated on September 30, 2010. Prior to excavation, a round steel fence post was found at the east edge of a north-south fence and a 5/8 inch diameter rebar was 1.7 feet west of the post. Excavation revealed both record stones found north of the rebar and post, on the west edge of the fence.
 The top stone was found at 8 inches below grade. The stone measured 7 inches N-S by 9 inches E-W by 12 inches tall. An etched + was clearly visible on the top center of the stone. The stone was removed and the record lower stone was found directly below the top stone. The lower stone measured approximately 8 inches E-W by 6 inches N-W by 4 inches tall, with a clearly visible + etched on the top. The lower stone is situated at 22 inches below grade. The lower stone was left in place, encased in concrete and the harrison monument was set directly over the etched + on the lower stone. Remnants of an old wood post were found approximately 1 foot S.E. of the stone, directly west of the steel post. The rebar, removed during excavation, had been 0.8 foot south and 0.4 foot west of the stone. The steel post was left in place.
 This corner was originally established as a wood post in 1820.



Kenneth E. Hedge
 Kenneth E. Hedge, County Surveyor

James S. Swift
 James S. Swift, IN LS 20200054
 July 25, 2011



PHOTOGRAPHIC DOCUMENTATION

Date of photography: September 30 - October 1, 2010

View of the top stone as first exposed.



View of the top stone more fully exposed.



The top stone removed from the ground.



The top of the bottom stone.



The harrison monument set in place of the top stone and over the bottom stone.



The harrison monument set in place of the top stone and over the bottom stone.



For details and documentation, refer to related sheet "Section Corner Record."

SECTION CORNER RECORD

SE 700-300

BOONE COUNTY SURVEYOR'S OFFICE

State Plane grid coordinates NAD83 (NSRS 2007):

North: 1708925.87 East: 3140924.57 (U.S. survey feet)

Type of monument: Harrison, 4" disk 'Section Corner'

Depth: One inch below adjacent road surface

Indiana tie card references:

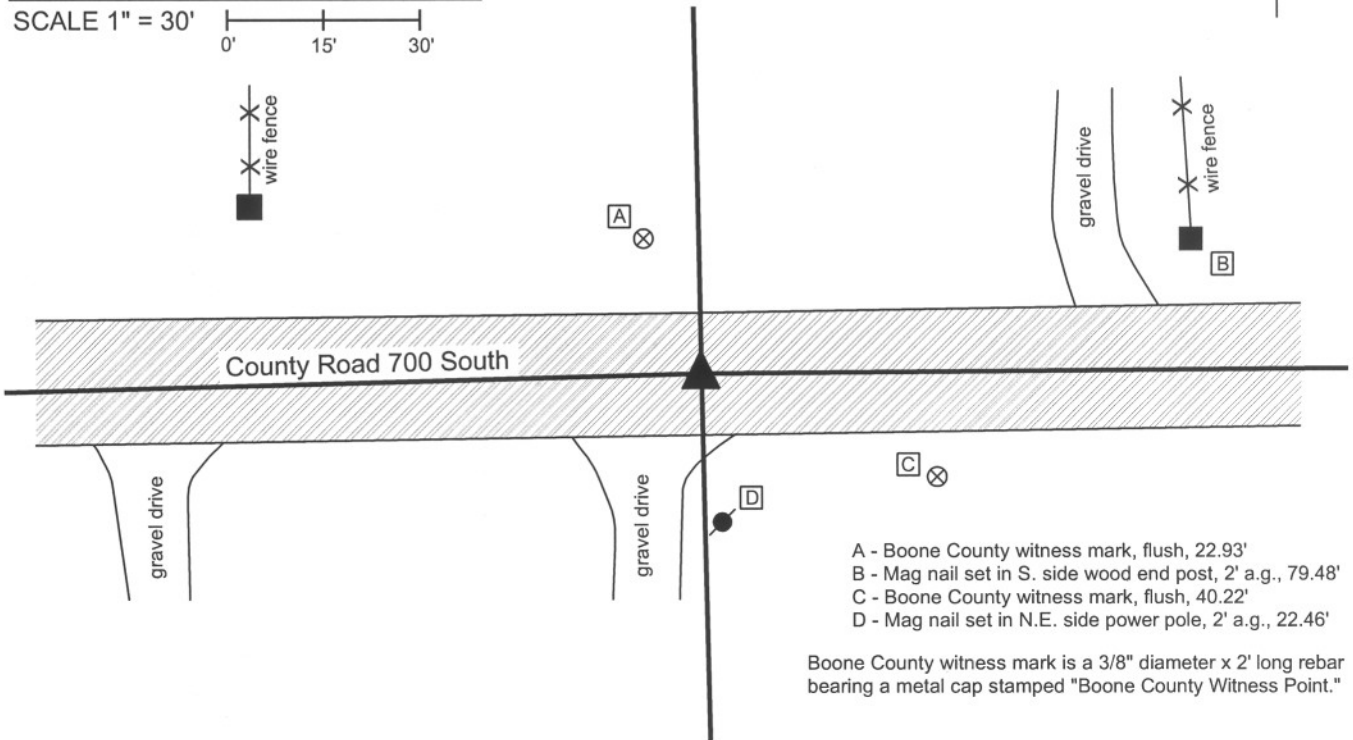
IN02_T17NR1E03_72 IN02_T17NR1E04_80

IN02_T17NR1E09_08 IN02_T17NR1E10_00



CORNER WITNESS DETAIL

SCALE 1" = 30'



- A - Boone County witness mark, flush, 22.93'
- B - Mag nail set in S. side wood end post, 2' a.g., 79.48'
- C - Boone County witness mark, flush, 40.22'
- D - Mag nail set in N.E. side power pole, 2' a.g., 22.46'

Boone County witness mark is a 3/8" diameter x 2' long rebar bearing a metal cap stamped "Boone County Witness Point."

The harrison monument was set over the top of a stone found.

A BCS record of March 19, 1872 states "Found from roots of Beech. Drove no stake." A BCS record of March 29, 1898 states "Set rock. 7x13x24 +. Two small rocks beneath." No BCS tie cards were found for this corner. Excavation occurred on November 19, 2008. Prior to excavation, a 1/2 inch rebar was visible at the surface. An area approximately 3 feet N-S by 9 feet E-W appeared to have been excavated previously. The rebar was at the west edge of that area. Excavation revealed a wood hub at 5 inches deep approximately 1.5 feet west of the rebar. Excavation also revealed the record stone found at 21 inches deep. The stone is fully embedded in the clay layer beneath the road and measures 7 inches N-S by 13 inches E-W by 24 inches vertical. One small rock was exposed underneath the rock at the east edge of the record stone. The harrison monument was set directly over the top, high point of the record stone, which point is approximately 4 inches west of the east edge of the stone. The harrison monument is 1.3 feet South and 2.2 feet west of the position of the 1/2 inch rebar, which was removed during excavation.

This corner was originally established as a wood post in June, 1820.



Kenneth E. Hedge
Kenneth E. Hedge, County Surveyor

James S. Swift
James S. Swift, IN LS 20200054

March 11, 2009 revised July 14, 2010

Perry Township

| | |
|------------------------|-------------------------|
| Section 4 T17N, R1E | Section 3 T17N, R1E |
| Section 9 T17N, R1E | Section 10 T17N, R1E |

PHOTOGRAPHIC DOCUMENTATION

Date of photography: November 19, 2008

Corner stone.
View from east with stone partially exposed.



Corner stone. View from east of fully exposed stone and County Road 700 South to the west.



Corner stone. View from above.



For details and documentation, refer to related sheet "Section Corner Record."

SECTION CORNER RECORD

SE 750-200

BOONE COUNTY SURVEYOR'S OFFICE

State Plane grid coordinates NAD83 (NSRS 2007):

North: 1706121.08 East: 3135692.51 (U.S. survey feet)

Type of monument: Harrison, 4" disk 'Section Corner'

Depth: One inch below adjacent road surface

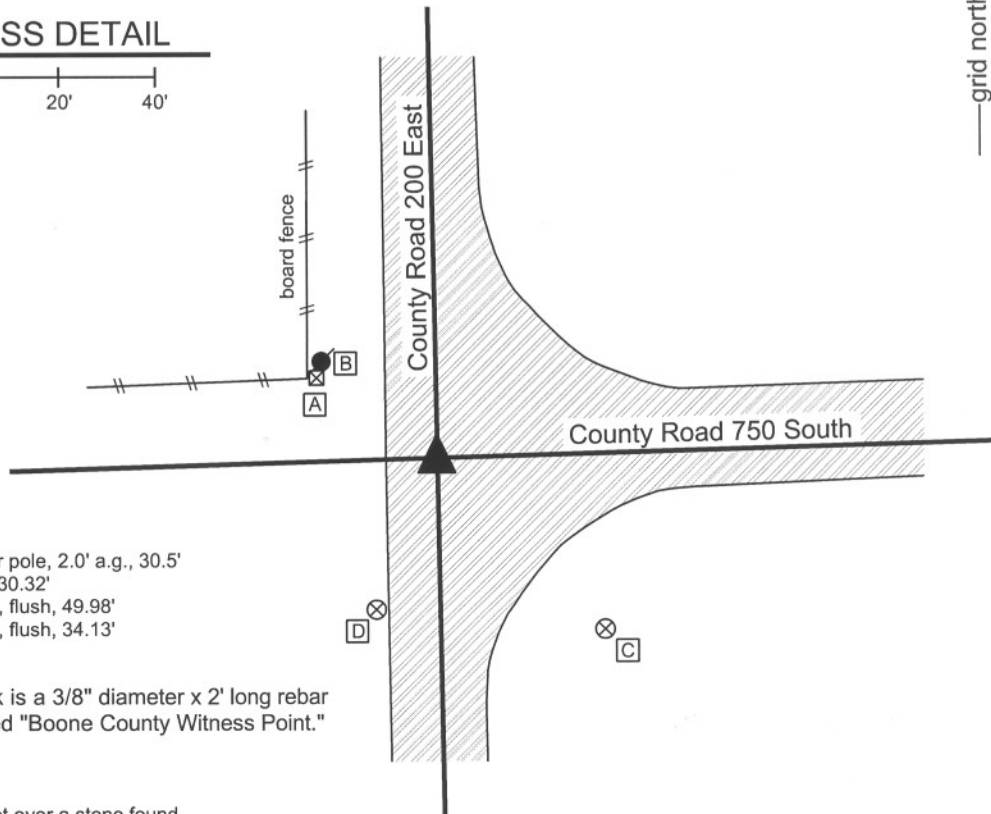
Indiana tie card references:

IN02_T17NR1E08_44

IN02_T17NR1E09_36

CORNER WITNESS DETAIL

SCALE 1" = 40'



- A - Mag nail set in S. side power pole, 2.0' a.g., 30.5'
- B - USGS monument, 0.2' a.g., 30.32'
- C - Boone County witness mark, flush, 49.98'
- D - Boone County witness mark, flush, 34.13'

Boone County witness mark is a 3/8" diameter x 2' long rebar bearing a metal cap stamped "Boone County Witness Point."

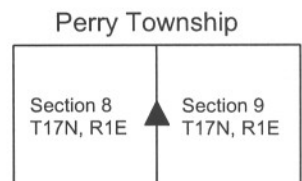
The harrison monument was set over a stone found.

A BCS record of March 19, 1872 states "Reestablished. Set two Rocks. One 6.5-1/2, 4 +. Top one 11, 10, 8 +." A BCS tie card dated February, 1968 states "no stone." This corner was excavated by a private surveyor in April, 2007, witnessed by the undersigned Land Surveyor. At that time the record top stone was found and a railroad spike was set directly over it. The corner was excavated again on May 7, 2009. The record stone is located at 24 inches deep, measuring 10 inches E-W by 8 inches N-S with a distinct "+" etched on the top center. The stone appears to be of a soft, sand-stone type material. The harrison monument was set in place of the railroad spike and directly over the etched "+" on the stone. A mag nail was found 2.7 feet north and 2.0 feet west of the stone. This nail fits approximately with the one remaining tie from the 1968 tie card. The reference on the tie card to "no stone" is clearly erroneous and the tie card does not state what monument was set if any. However, it is known that field crews from this office in that era often set railroad rails on end as monuments. The mag nail may be over a rail. The mag nail was not removed and the rail, if present, was not exposed. The 1872 record stone is held as monumenting the corner. This corner was originally established as a wood post in June, 1820.



Kenneth E. Hedge
 Kenneth E. Hedge, County Surveyor

James S. Swift
 James S. Swift, IN LS 20200054
 July 14, 2010



PHOTOGRAPHIC DOCUMENTATION

Date of photography: May 7, 2009

View of the stone as first exposed.



The stone after it had dried in the air briefly.



View from over the stone, looking north along County Road 200 East.



View from over the stone, looking East along County Road 750 South.



For details and documentation, refer to related sheet "Section Corner Record."

SECTION CORNER RECORD

SE 750-300

BOONE COUNTY SURVEYOR'S OFFICE

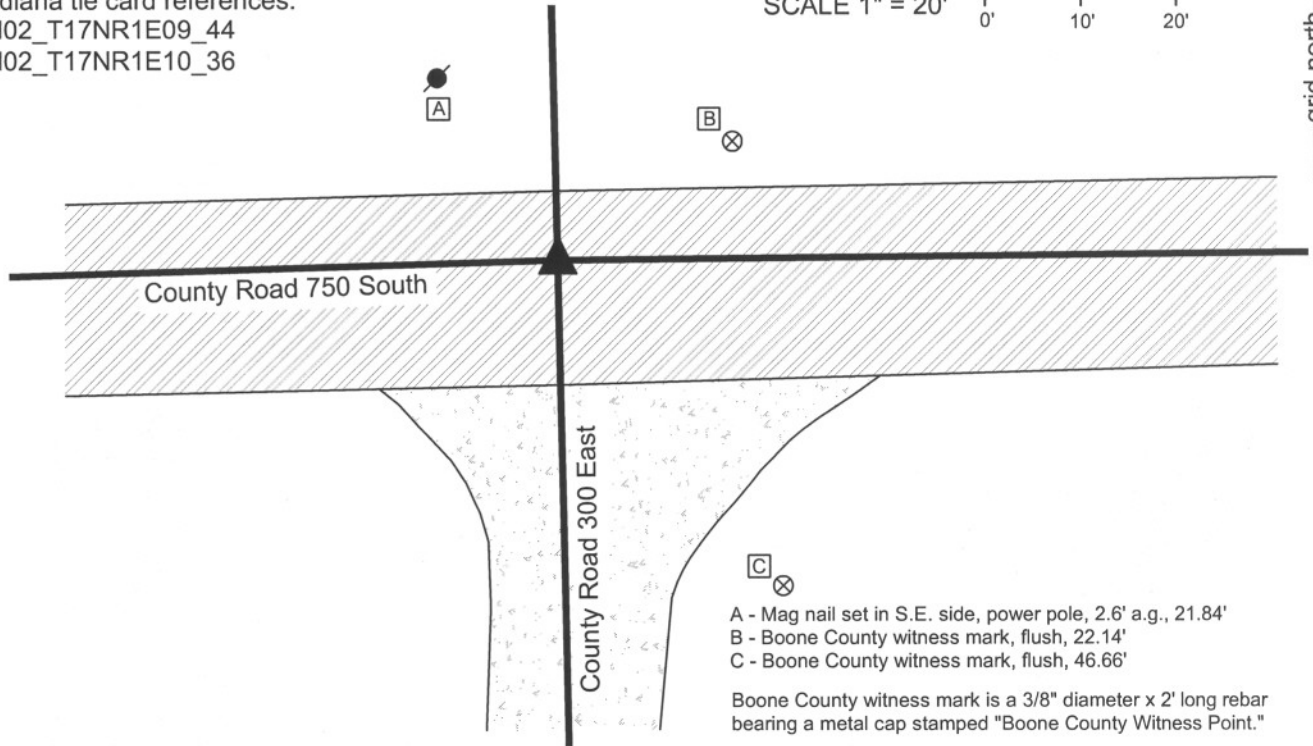
State Plane grid coordinates NAD83 (NSRS 2007):
North: 1706272.64 East: 3140984.74 (U.S. survey feet)

Type of monument: Harrison, 4" disk 'Section Corner'
Depth: One inch below adjacent road surface

Indiana tie card references:
IN02_T17NR1E09_44
IN02_T17NR1E10_36

CORNER WITNESS DETAIL

SCALE 1" = 20' 0' 10' 20'



- A - Mag nail set in S.E. side, power pole, 2.6' a.g., 21.84'
- B - Boone County witness mark, flush, 22.14'
- C - Boone County witness mark, flush, 46.66'

Boone County witness mark is a 3/8" diameter x 2' long rebar bearing a metal cap stamped "Boone County Witness Point."

The Harrison monument was set over a stone found. A BCS record of March 19, 1872 states "Reestablished from stump. Set two Rocks. One 16,11,8 +. Top one 16,10,7 +." A BCS tie card of February, 1968 shows the corner but does not contain further information. The field notes associated with this tie card show the same sketch and also state "no stone, Ken and Harold, February 1968." This corner was excavated on November 20, 2008. Prior to excavation, a mag nail in a washer was visible at the surface. Excavation revealed a railroad rail below the nail at 7 inches deep. Excavation also revealed a wood hub found with a railroad spike driven into the top of it at 6 inches deep, 0.65 foot south and 1.0 foot east of the rail. A stone was found below the hub and spike at 14 inches deep. The stone measures 13x10x9 inches, set vertically but mostly in fill material with only the bottom partially in the clay layer. Another stone was found at 16 inches deep, approximately 2.8 feet north of the first stone. The second stone is too large for either of the record stones and was oriented rather haphazardly. This stone was removed and below it was found another stone, completely embedded in the clay. The dimensions of this somewhat rough stone are difficult to precisely determine, but are approximately the dimensions on the record lower stone from 1872, being 16 by 11 by 8 inches. The stone is set horizontally with the longest part oriented E-W. This fits with the pattern from that period wherein the top stone was set vertically and the lower stone was set horizontally. The stone was accepted as being the record lower stone as described in the record of March 19, 1872. It is also noted that the top of the clay layer was at approximately 9 inches above the top of the stone. If the upper record stone was set vertically, it would have protruded at least 7 inches into the current layer of fill material. The cross section of the road in this intersection consists of asphalt on top, over a sandy fill material which is over a rocky fill material. The rocky material appears to be specifically intended as fill, rather than just the old sandy, gravelly base material of the wagon road, as its typically found above the clay layer in similar county roads. It is likely that the upper record stone was removed during the installation of the fill material. The Harrison monument is 2.1 feet North and 0.5 foot East of the position of the mag nail and railroad rail, both of which were removed during excavation. This corner was originally established as a wood post in June, 1820.

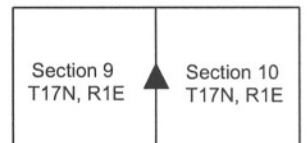


Kenneth E. Hedge
Kenneth E. Hedge, County Surveyor

James S. Swift
James S. Swift, IN LS 20200054

March 11, 2009 Revised July 14, 2010

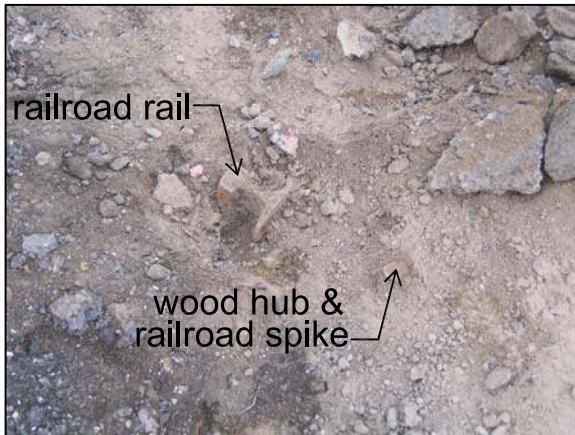
Perry Township



PHOTOGRAPHIC DOCUMENTATION

Date of photography: November 20, 2008

Railroad rail and wood hub with railroad spike driven into it.



Non-record stone found entirely within fill material. Overhead view from west.



Non-record stone found mostly in fill material with bottom at clay layer. View from south.



Record bottom stone found, embedded in clay. View from south.



For details and documentation, refer to related sheet "Section Corner Record."

SECTION CORNER RECORD

SE 800-200

BOONE COUNTY SURVEYOR'S OFFICE

State Plane grid coordinates NAD83 (2011):
North: 1703486.64 East: 3135740.06 (U.S. survey feet)

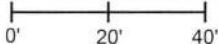
Type of monument: 5/8" rebar with metal cap stamped
'Hendricks County Surveyor'

Depth: Flush with adjacent road surface

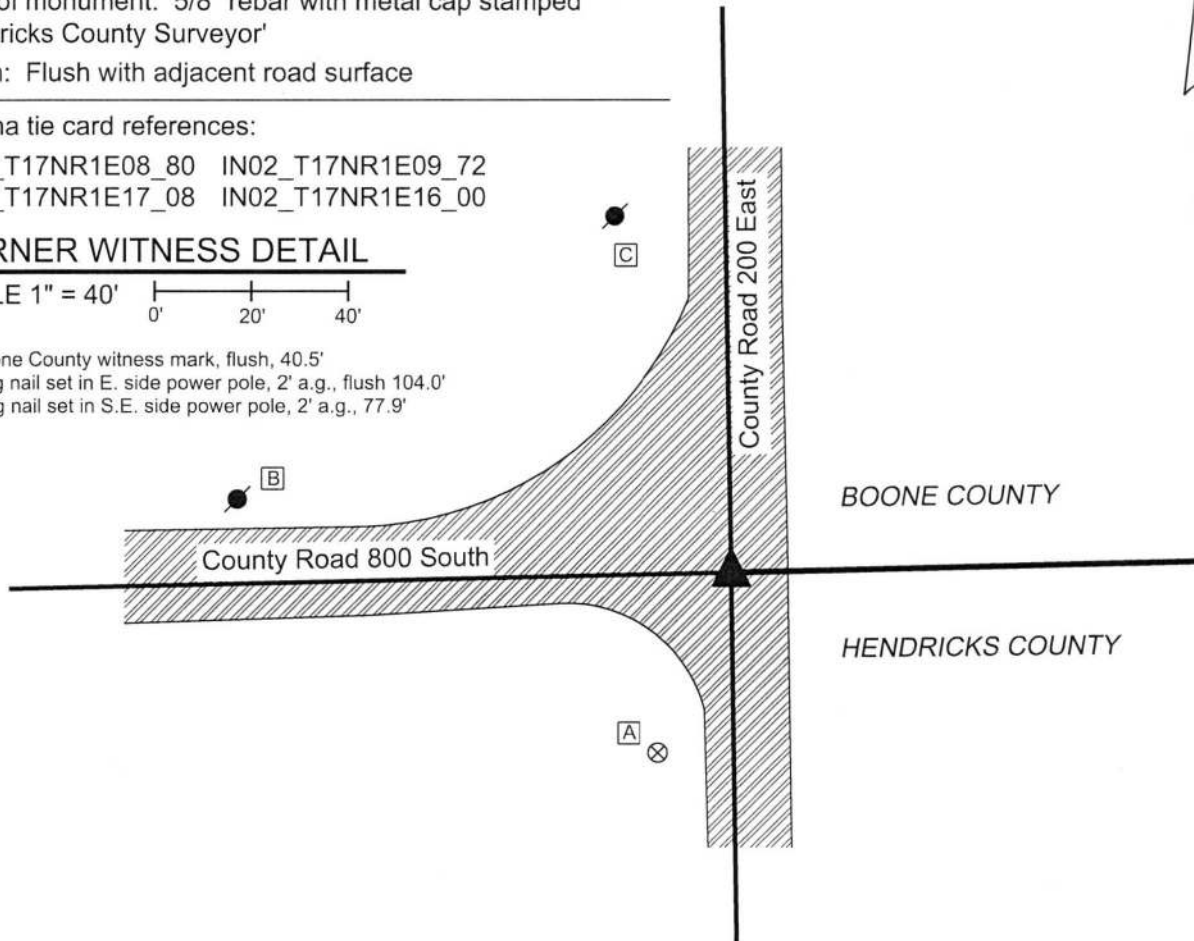
Indiana tie card references:

IN02_T17NR1E08_80 IN02_T17NR1E09_72
IN02_T17NR1E17_08 IN02_T17NR1E16_00

CORNER WITNESS DETAIL

SCALE 1" = 40' 

- A - Boone County witness mark, flush, 40.5'
- B - Mag nail set in E. side power pole, 2' a.g., flush 104.0'
- C - Mag nail set in S.E. side power pole, 2' a.g., 77.9'




The rebar with Hendricks County cap was found in place and held as marking the corner. No specific descriptions of this corner were found in the BCS Surveyor's Record beyond the original establishment of the corner as a wood post in 1820. No recent BCS tie cards were found referencing the corner. A 'Record of Corner' published by the Hendricks County Surveyor's Office dated March 23, 2007 and revised September 30, 2008 shows the corner as a stone 20 inches deep with the description 'Stone is smooth granite and measures 12"x10" on top. Cut "x" on top'. Field notes dated November 15, 2017 supplied by the Hendricks County Surveyor's Office confirm the above narrative and further state that a Hendricks County rebar and disk were set over the stone.

The Hendricks County monument, being a rebar with metal cap, was found in good condition and accepted as marking the corner. No excavation was performed by the Boone County Surveyor's Office, accepting the efforts of the Hendricks County Surveyor's Office as sufficient and successful. This corner was originally established as a wood post in 1820.




Kenneth E. Hedge, County Surveyor

Perry Township
Boone County


James S. Swift, IN LS 20200054

Middle Township
Hendricks County

| | |
|-------------------------|-------------------------|
| Section 8 T17N, R1E | Section 9 T17N, R1E |
| Section 17 T17N, R1E | Section 16 T17N, R1E |

Brown Township

July 9, 2019

SECTION CORNER RECORD

BOONE COUNTY SURVEYOR'S OFFICE

SE 800-250

State Plane grid coordinates NAD83 (2011):

North: 1703542.42 East: 3138392.71 (U.S. survey feet)

Type of monument: Harrison, 4" disk 'Section Corner'

Depth: Three inches above adjacent ground

Indiana tie card references:

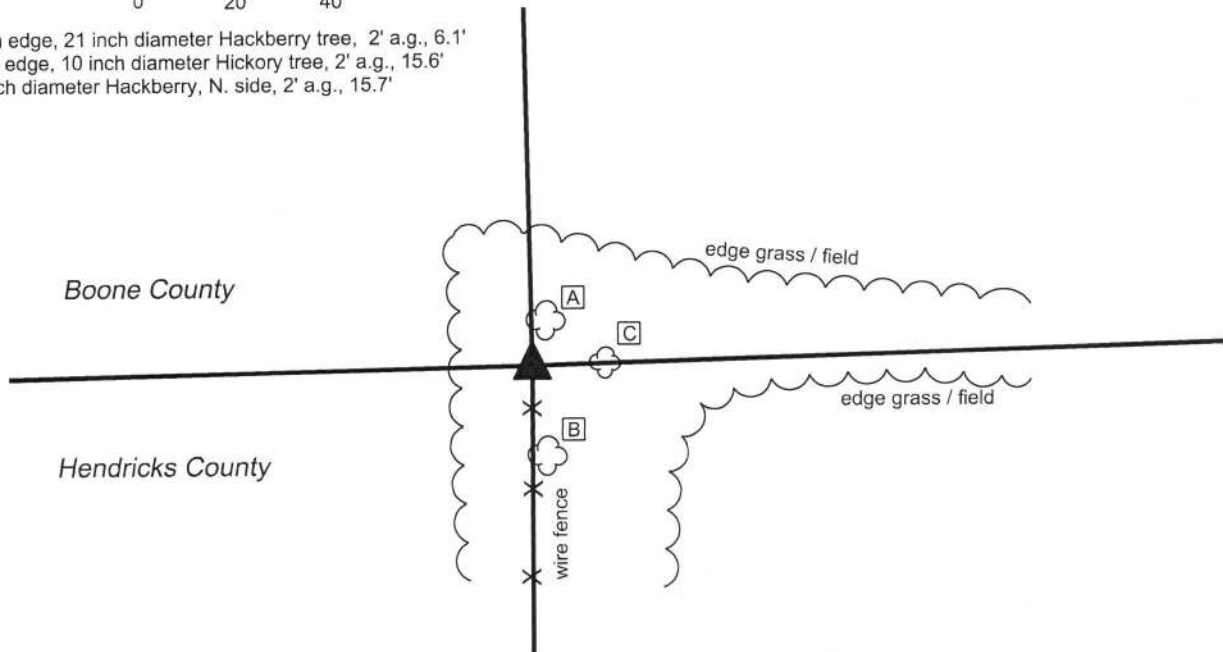
IN02_T17NR1E09_76 IN02_T17NR1E16_04



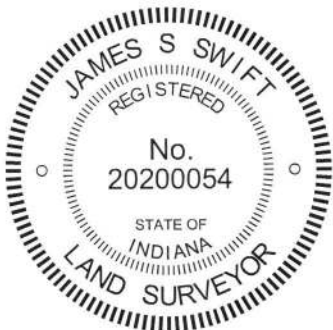
CORNER WITNESS DETAIL

SCALE 1" = 40'

- A - South edge, 21 inch diameter Hackberry tree, 2' a.g., 6.1'
- B - North edge, 10 inch diameter Hickory tree, 2' a.g., 15.6'
- C - 18 inch diameter Hackberry, N. side, 2' a.g., 15.7'



The Harrison monument was set in place of a stone found. No specific descriptions of this corner were found in the BCS Surveyor's Record nor were any recent BCS tie cards found referencing the corner. Representatives of the Hendricks County Surveyor's Office observed this stone on January 3, 2018 and accepted it as marking the corner. The stone had a deeply etched X mark on the top, made by the HCSO. In March, 2019 it was observed by this office (BCSO) that the stone was not stable in the ground. While it did not appear to have been disturbed, the top of the stone could be easily shifted in position with minimal pressure. The Hendricks County Surveyor's Office was informed of this and informed of the intent to remove the stone and replace it with a more stable, permanent monument. The stone was removed on March 22, 2019 and a Harrison monument was set in the position of the etched mark on the top of the stone. The stone was 12 inches tall by 7 inches N-S by 6 inches E-W. The stone was found at the west edge of ancient wood corner post with standing fencing to the north and south, and fencing cut-off toward the east. The stone is shown as being held to mark the corner of surveys recorded in Survey Book 13, pages 71-72 and Survey Book 17, pages 51-52 in the Office of the Boone County Recorder. It is noted that the fence to the north only extends nine feet to another post which represents the terminus of this fence. This corner was originally established as a wood post in 1820.



Kenneth E. Hedge
 Kenneth E. Hedge, County Surveyor

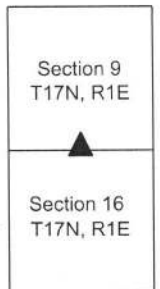
James S. Swift
 James S. Swift, IN LS 20200054
 April 10, 2019

Perry Township
 Boone County

Section 9
 T17N, R1E

Brown Township
 Hendricks County

Section 16
 T17N, R1E



SECTION CORNER RECORD

SE 800-300

BOONE COUNTY SURVEYOR'S OFFICE

State Plane grid coordinates NAD83 (2011):

North: 1703616.42 East: 3141041.51 (U.S. survey feet)

Type of monument: Harrison, 4" disk 'Section Corner'

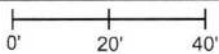
Depth: 1/2 inch below adjacent road surface

Indiana tie card references:

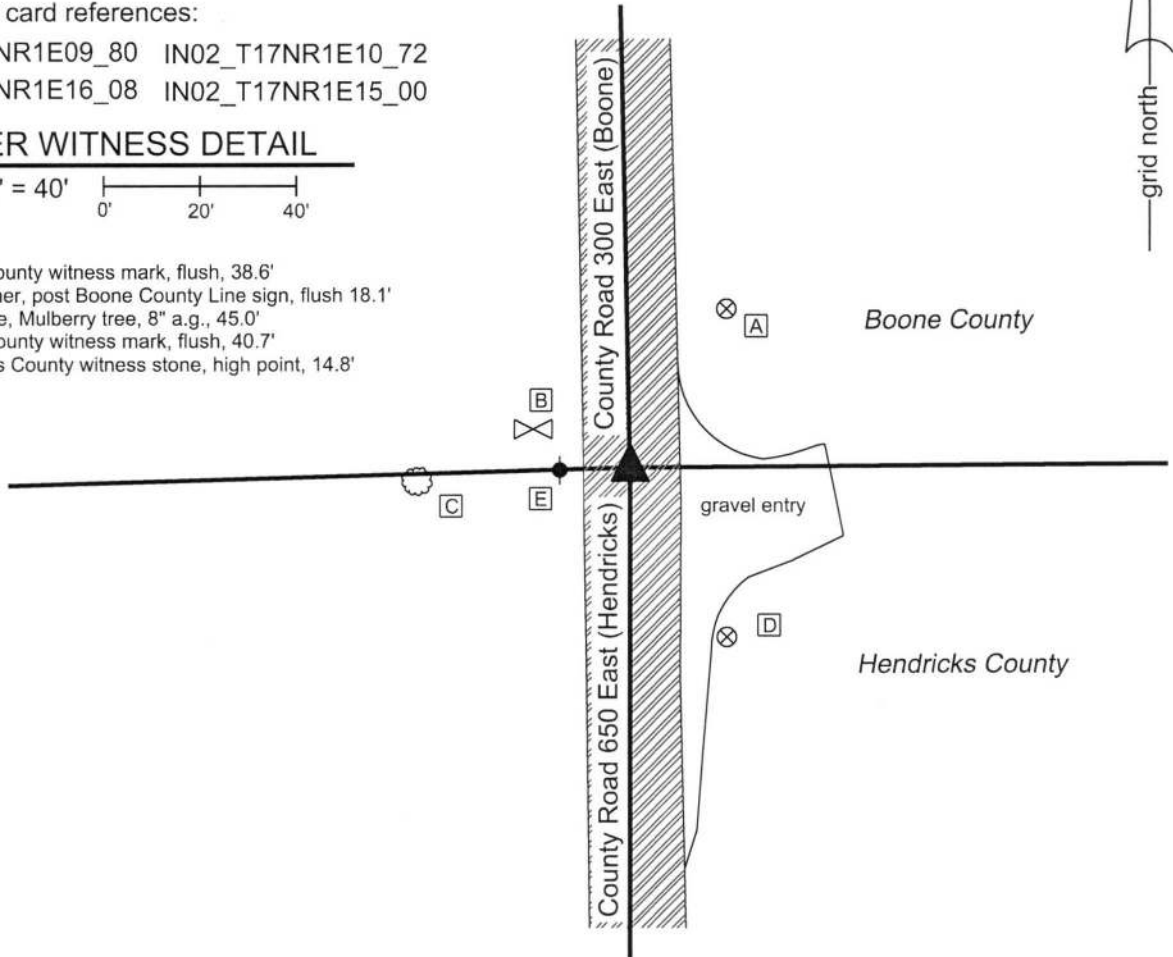
IN02_T17NR1E09_80 IN02_T17NR1E10_72

IN02_T17NR1E16_08 IN02_T17NR1E15_00

CORNER WITNESS DETAIL

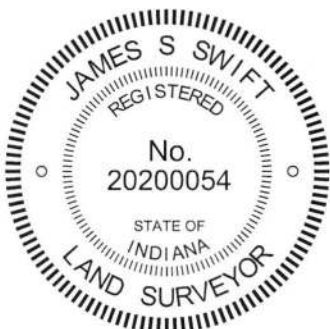
SCALE 1" = 40' 

- A - Boone County witness mark, flush, 38.6'
- B - S.E. Corner, post Boone County Line sign, flush 18.1'
- C - East edge, Mulberry tree, 8" a.g., 45.0'
- D - Boone County witness mark, flush, 40.7'
- E - Hendricks County witness stone, high point, 14.8'




The Harrison monument was set over a stone found.

No specific descriptions of this corner were found in the BCS Surveyor's Record beyond the original establishment of the corner as a wood post in 1820. No BCS tie cards were found referencing this corner. A Hendricks County tie card dated March 23, 2007 shows the corner as an 8"x16"x18" stone with cut "x" on top. Hendricks County field notes dated October 10, 2017 affirm this tie card. Both tie cards state that a rebar with disk was set over the stone. This corner was excavated by the Boone County Surveyor's Office on August 28, 2019 in preparation for a road paving project. Prior to excavation, a rebar with Hendricks County cap was found at the surface of the road. Excavation revealed the stone described on the Hendricks County tie cards at 17 inches deep. The mark on the top of stone is deeply etched and entirely visible. It was observed that the capped rebar (removed during excavation) had been 0.15 foot south of the mark on the stone. After consultation with the Hendricks County Surveyor's Office, the mark on the stone was held as the specific position of the corner. A Harrison monument was set directly over this point, 0.15 foot north of the capped rebar found prior to excavation.




 Kenneth E. Hedge, County Surveyor

Perry Township
Boone County


 James S. Swift, IN LS 20200054
 September 11, 2019

Brown Township
Hendricks County

| | |
|-------------------------|-------------------------|
| Section 9 T17N, R1E | Section 10 T17N, R1E |
| Section 16 T17N, R1E | Section 15 T17N, R1E |

The table shows a 2x2 grid of sections. A triangle points to the intersection of Section 16 and Section 15.