

SECTION CORNER RECORD

NE 400-700

BOONE COUNTY SURVEYOR'S OFFICE

State Plane grid coordinates NAD83 (NSRS 2007):
 North: 1767379.15 East: 3161576.80 (U.S. survey feet)

Type of monument: Harrison, 4" disk 'Section Corner'
 Depth: Six inches below the surface of the gravel road.

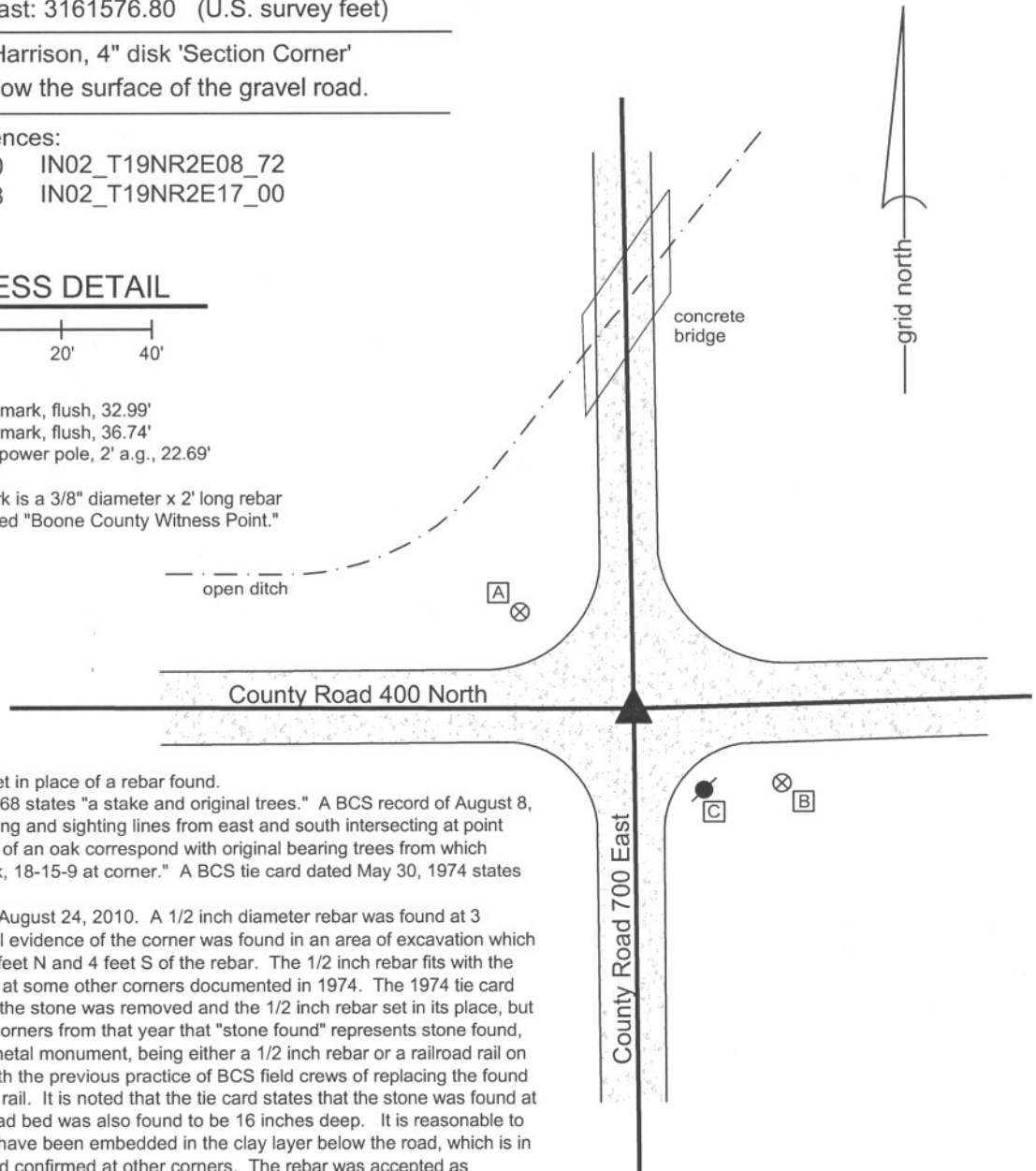
Indiana tie card references:
 IN02_T19NR2E07_80 IN02_T19NR2E08_72
 IN02_T19NR2E18_08 IN02_T19NR2E17_00

CORNER WITNESS DETAIL

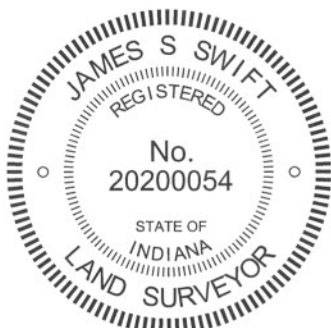
SCALE 1" = 40'

- A - Boone County witness mark, flush, 32.99'
- B - Boone County witness mark, flush, 36.74'
- C - Mag nail set in N. side power pole, 2' a.g., 22.69'

Boone County witness mark is a 3/8" diameter x 2' long rebar bearing a metal cap stamped "Boone County Witness Point."



The harrison monument was set in place of a rebar found. A BCS record of August 27, 1868 states "a stake and original trees." A BCS record of August 8, 1912 states "Found by measuring and sighting lines from east and south intersecting at point where an Elm stump and roots of an oak correspond with original bearing trees from which re-established corner. Set rock, 18-15-9 at corner." A BCS tie card dated May 30, 1974 states "Stone found, 16" deep." This corner was excavated on August 24, 2010. A 1/2 inch diameter rebar was found at 3 inches deep. No other physical evidence of the corner was found in an area of excavation which extended 6 feet W, 4 feet E, 4 feet N and 4 feet S of the rebar. The 1/2 inch rebar fits with the character of monuments found at some other corners documented in 1974. The 1974 tie card does not specifically state that the stone was removed and the 1/2 inch rebar set in its place, but it has been observed at other corners from that year that "stone found" represents stone found, removed and replaced with a metal monument, being either a 1/2 inch rebar or a railroad rail on end. This is also in keeping with the previous practice of BCS field crews of replacing the found stone with a section of railroad rail. It is noted that the tie card states that the stone was found at 16 inches deep and that the road bed was also found to be 16 inches deep. It is reasonable to conclude that the stone would have been embedded in the clay layer below the road, which is in character with stones found and confirmed at other corners. The rebar was accepted as providing the best available evidence of the stone found in 1974 and held as marking the corner. The harrison monument was set in place of the found rebar. This corner was originally established as a wood post in July, 1821.



Kenneth E. Hedge
 Kenneth E. Hedge, County Surveyor

James S. Swift
 James S. Swift, IN LS 20200054
 July 25, 2011

Marion Township

Section 7 T19N, R2E	Section 8 T19N, R2E
Section 18 T19N, R2E	Section 17 T19N, R2E

SECTION CORNER RECORD

NE 400-750

BOONE COUNTY SURVEYOR'S OFFICE

State Plane grid coordinates NAD83 (NSRS 2007):

North: 1767454.46 East: 3164192.81 (U.S. survey feet)

Type of monument: Harrison, 4" disk 'Section Corner'

Depth: One inch below adjacent road surface

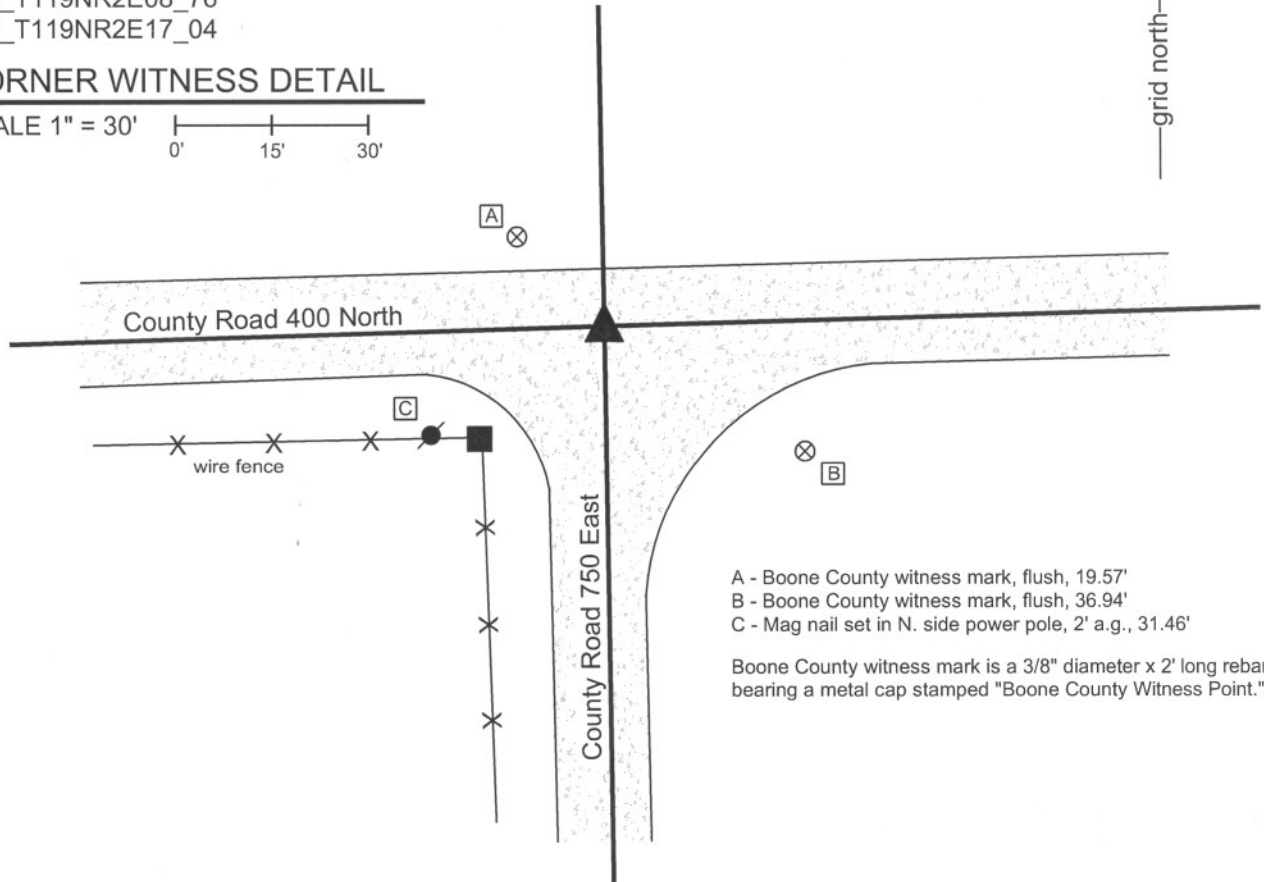
Indiana tie card references:

IN02_T119NR2E08_76

IN02_T119NR2E17_04

CORNER WITNESS DETAIL

SCALE 1" = 30'

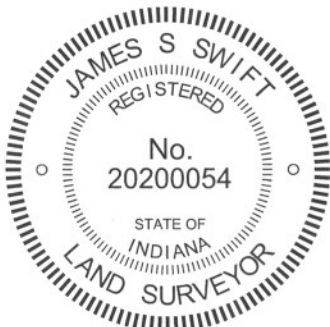


- A - Boone County witness mark, flush, 19.57'
- B - Boone County witness mark, flush, 36.94'
- C - Mag nail set in N. side power pole, 2' a.g., 31.46'

Boone County witness mark is a 3/8" diameter x 2' long rebar bearing a metal cap stamped "Boone County Witness Point."

The Harrison monument was set over a stone found.

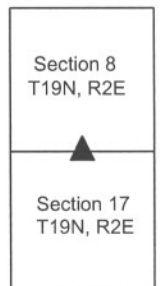
A BCS record of June 17, 1873 states "Reestablished from trees. Set a Rock 13,9,4 +." A BCS record of August 8, 1912 states "Found rock at corner, also stump of oak." A BCS record of September 23, 1921 states "Set Rock 24x16x8 +." A BCS tie card dated May 22, 1974 states "No stone." This corner was excavated on August 31, 2010. A 1/2 inch rebar was found at 3 inches deep in the gravel road. This monument is similar in character to monuments found at some other corners documented in 1974. The stone described in the 1921 record was found at 16 inches deep, northeast of the rebar. The stone is fully embedded in the clay layer below the road with the top of the stone at the bottom of the road bed. The stone has a clearly visible etched "+" at the top, high point. With 18 inches of the stone exposed on the south side, the stone measures 15 inches N-S by 8 inches E-W. The Harrison monument was set directly over the etched "+" on the stone and the top 4 inches of the stone were encased in concrete along with the Harrison. The 1974 reference to "no stone" indicates that a stone was searched for but found. It is most likely that the 1/2 inch rebar was set at that time, after the erroneous determination that other evidence, in the form of a stone, was not present. The rebar had been 0.8' south and 1.0' west of the found stone. This corner was originally established as a wood post in July, 1821.



Kenneth E. Hedge
Kenneth E. Hedge, County Surveyor

James S. Swift
James S. Swift, IN LS 20200054
July 25, 2011

Marion Twp



PHOTOGRAPHIC DOCUMENTATION

Date of photography: August 31, 2010

View from the east looking across the stone and west along County road 400 North.



View of the stone as first exposed.



The stone from above and east.



Similar view to above, in full sun.



For details and documentation, refer to related sheet "Section Corner Record."

SECTION CORNER RECORD

NE 400-800

BOONE COUNTY SURVEYOR'S OFFICE

State Plane grid coordinates NAD83 (NSRS 2007):

North: 1767525.47 East: 3166835.76 (U.S. survey feet)

Type of monument: Harrison, 4" disk 'Section Corner'

Depth: Six inches below the gravel road surface.

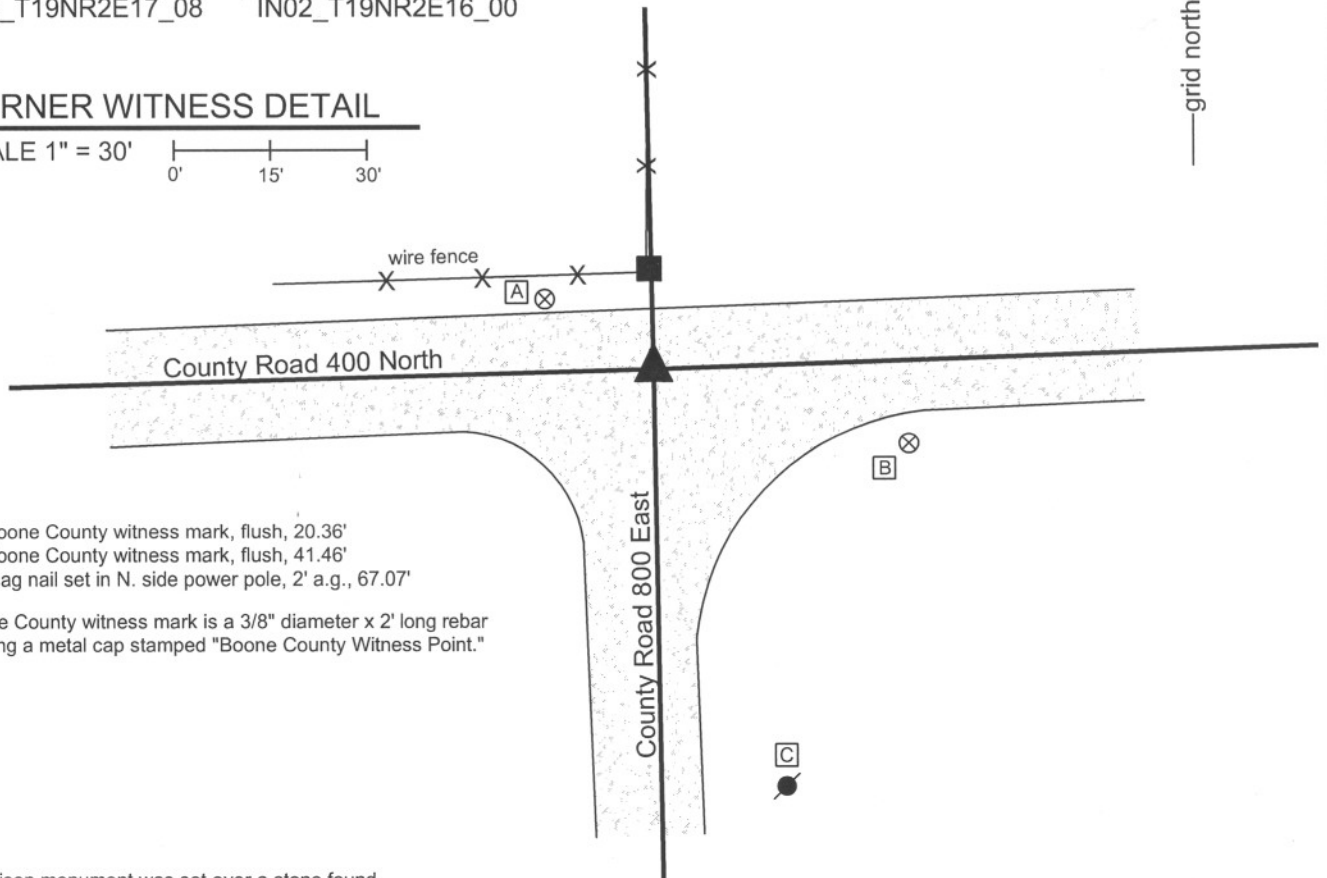
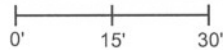
Indiana tie card references:

IN02_T19NR2E08_80 IN02_T19NR2E09_72

IN02_T19NR2E17_08 IN02_T19NR2E16_00

CORNER WITNESS DETAIL

SCALE 1" = 30'



- A - Boone County witness mark, flush, 20.36'
- B - Boone County witness mark, flush, 41.46'
- C - Mag nail set in N. side power pole, 2' a.g., 67.07'

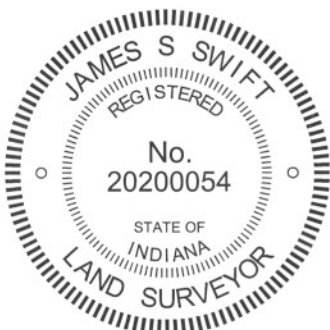
Boone County witness mark is a 3/8" diameter x 2' long rebar bearing a metal cap stamped "Boone County Witness Point."

The harrison monument was set over a stone found.

A BCS record of June 17, 1873 states "Reestablished. Set two Rocks one 13.8 by 6 in + under one is 7.5.4 +." A BCS tie card dated October 21, 1971 states "found stone, set rail." A BCS tie card dated May 30, 1975 states "Stone found w/ Rail at angle."

This corner was excavated on August 24, 2010. A section of railroad rail was found leaning substantially towards the south. Excavation revealed that the rail was suspended over a stone, with the bottom of the rail to the north of the stone and the top of the rail to the south of the stone. The stone is the record lower stone from 1873, measuring 7 inches N-S by 5 inches E-W by 4 inches tall. An etched "+" was clearly visible on the top, center of the stone. The stone is 30 inches deep. The bottom of the road bed in this immediate vicinity is at 18 to 20 inches deep. Hence the record top stone, at 13 inches tall, would have protruded 1 to 3 inches out of the clay layer below the road into the bottom of the road bed, which is in character with many other stones found from that era. The stone was left in place and the harrison monument was set over the etched "+" on the top of the stone. The rail was removed during excavation.

This corner was originally established as a wood post in July, 1921.



Kenneth E. Hedge
 Kenneth E. Hedge, County Surveyor

James S. Swift
 James S. Swift, IN LS 20200054
 July 25, 2011

Marion Township

Section 8 T19N, R2E	Section 9 T19N, R2E
Section 17 T19N, R2E	Section 16 T19N, R2E

PHOTOGRAPHIC DOCUMENTATION

Date of photography: August 24, 2010

The top of the railroad rail, as found.



View of the stone as first exposed.



View of the stone from above and south.



The stone from above, showing the etched mark.



For details and documentation, refer to related sheet "Section Corner Record."

SECTION CORNER RECORD

NE 450-700

BOONE COUNTY SURVEYOR'S OFFICE

State Plane grid coordinates NAD83 (NSRS 2007):

North: 1770016.16 East: 3161530.92 (U.S. survey feet)

Type of monument: Harrison, 4" disk 'Section Corner'

Depth: six inches below adjacent gravel road surface

Indiana tie card references:

IN02_T19NR2E07_44

IN02_T19NR2E08_36

CORNER WITNESS DETAIL

SCALE 1" = 40'

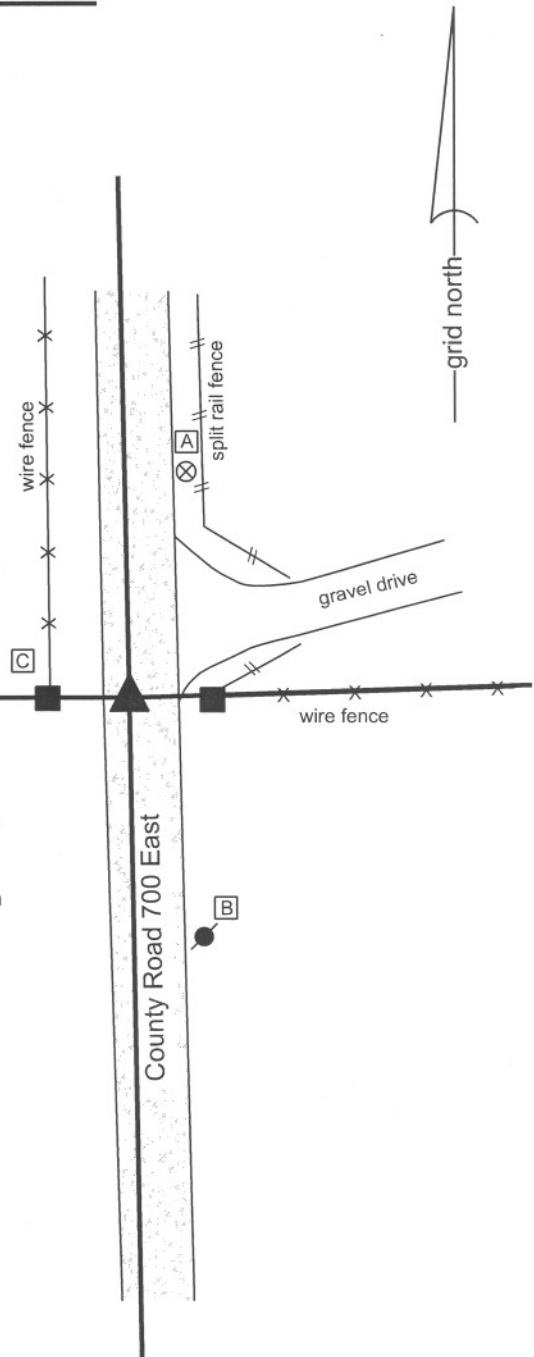


A - Boone County witness mark, flush, 48.56'

B - Mag nail set in N. side power pole, 2' a.g., 50.27'

C - Nail in bottlecap found in N.E. corner wood post, 10 in. a.g., 16.48'

Boone County witness mark is a 3/8" diameter x 2' long rebar bearing a metal cap stamped "Boone County Witness Point."

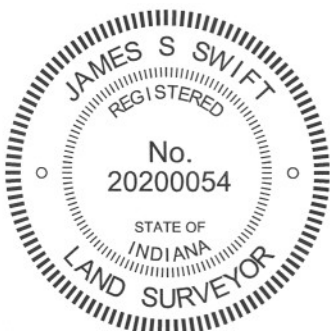


The harrison monument was set in place of a railroad spike found and a stone found. A BCS record of January 1837, ascribed to the writing of H. Lapham, shows the corner as present and provides distance ties to two witness trees, being an 8 inch diameter Ash and a 33 inch diameter Beech. A BCS record of August 26 and 29, 1868 states "Reestablished from trees of H. Lapham Sect. 8. Set Rock 26.18 by 15 in. marked + on top." A BCS tie card dated June 13, 1974 states "Found stone, 8" deep."

This corner was excavated on March 16, 2011. Prior to excavation, a railroad spike was found at 1 inch deep. The position of the railroad spike fit with the distance ties shown on the 1974 tie card. Excavation revealed the stone described in the 1868 record at 8 inches deep. The stone had a clearly etched + on the top. The railroad spike had been directly over the etched +. The stone was 26 inches tall by 15 inches E-W by 18 inches N-S. 5/8 inch diameter rebars were found on the East and West sides of the stone. The etched + on the stone was at 1 rod (16.5 feet) from the end posts on both the east and west sides of the road.

The stone was removed and a harrison monument was set in its place, specifically in the position of the railroad spike and etched + on the top of the stone.

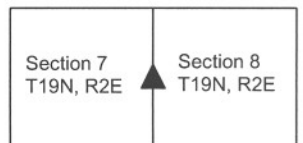
This corner was originally established as a wood post in July, 1821.



Kenneth E. Hedge
 Kenneth E. Hedge, County Surveyor

James S. Swift
 James S. Swift, IN LS 20200054
 March 1, 2012

Marion Township



PHOTOGRAPHIC DOCUMENTATION

Date of photography: March 16, 2011

View of the top of the stone as first exposed, showing the etched "+" mark. Note the rust stain from the railroad spike which had been situated above the mark.



View from the southwest as the stone is being removed from the road bed.



View from the southeast as the stone is being removed from the road bed.



The stone lying on the side of the road. The mark which had been on the top of the stone is visible in the picture, as noted by the arrow.



For details and documentation, refer to related sheet "Section Corner Record."

SECTION CORNER RECORD

NE 450-800

BOONE COUNTY SURVEYOR'S OFFICE

State Plane grid coordinates NAD83 (CORS96):

North: 1770174.20 East: 3166797.02 (U.S. survey feet)

Type of monument: Harrison, 4" disk 'Section Corner'

Depth: two inches above adjoining ground

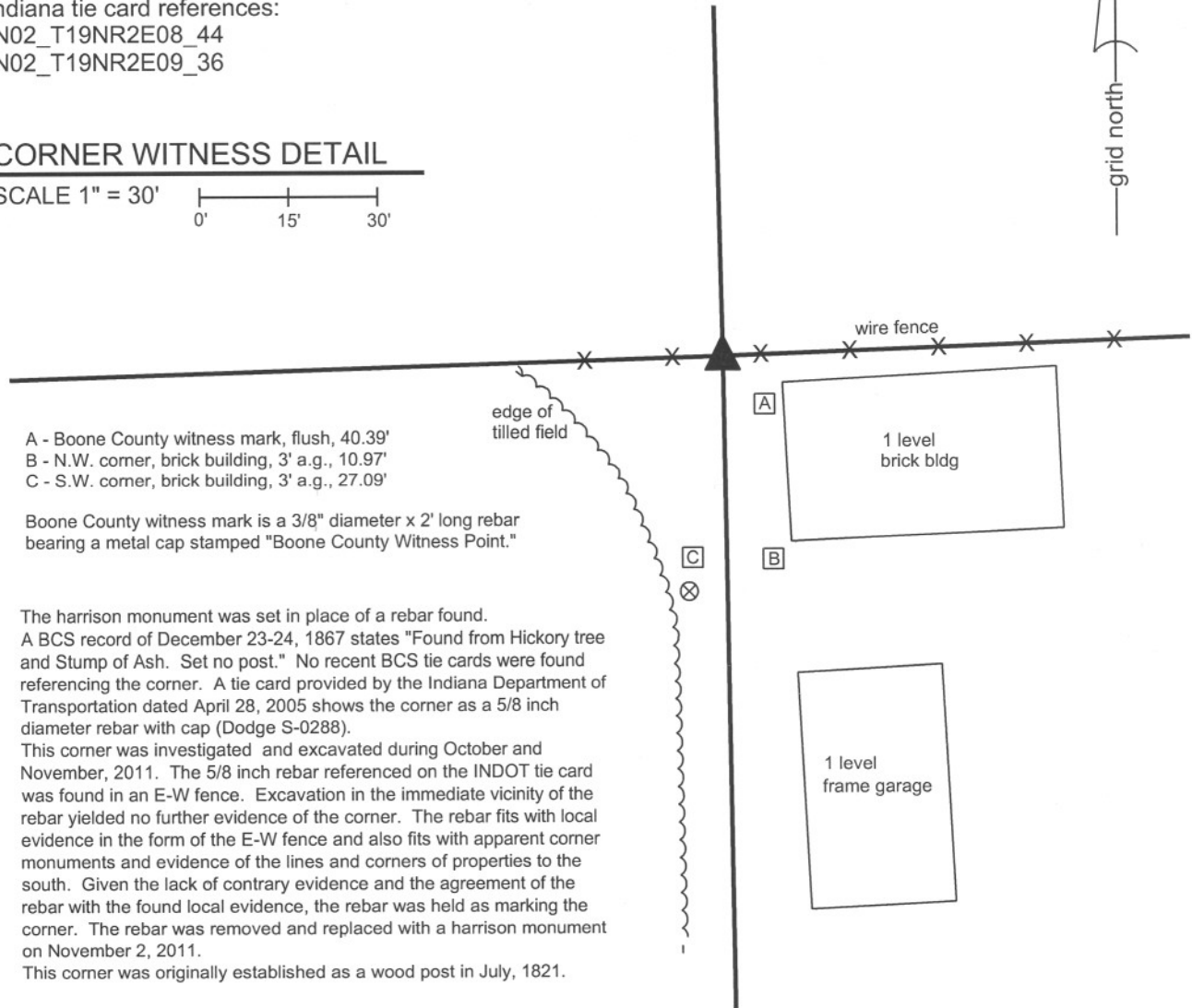
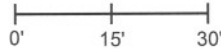
Indiana tie card references:

IN02_T19NR2E08_44

IN02_T19NR2E09_36

CORNER WITNESS DETAIL

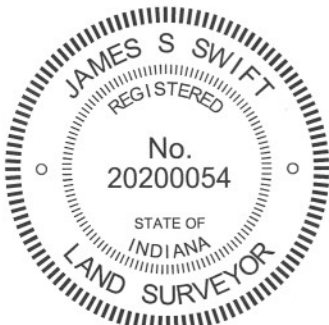
SCALE 1" = 30'



- A - Boone County witness mark, flush, 40.39'
- B - N.W. corner, brick building, 3' a.g., 10.97'
- C - S.W. corner, brick building, 3' a.g., 27.09'

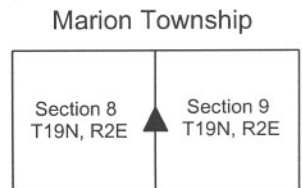
Boone County witness mark is a 3/8" diameter x 2' long rebar bearing a metal cap stamped "Boone County Witness Point."

The Harrison monument was set in place of a rebar found. A BCS record of December 23-24, 1867 states "Found from Hickory tree and Stump of Ash. Set no post." No recent BCS tie cards were found referencing the corner. A tie card provided by the Indiana Department of Transportation dated April 28, 2005 shows the corner as a 5/8 inch diameter rebar with cap (Dodge S-0288). This corner was investigated and excavated during October and November, 2011. The 5/8 inch rebar referenced on the INDOT tie card was found in an E-W fence. Excavation in the immediate vicinity of the rebar yielded no further evidence of the corner. The rebar fits with local evidence in the form of the E-W fence and also fits with apparent corner monuments and evidence of the lines and corners of properties to the south. Given the lack of contrary evidence and the agreement of the rebar with the found local evidence, the rebar was held as marking the corner. The rebar was removed and replaced with a Harrison monument on November 2, 2011. This corner was originally established as a wood post in July, 1821.



Kenneth E. Hedge
 Kenneth E. Hedge, County Surveyor

James S. Swift
 James S. Swift, IN LS 20200054
 March 1, 2012



SECTION CORNER RECORD

NE 500-700

BOONE COUNTY SURVEYOR'S OFFICE

State Plane grid coordinates NAD83 (CORS96):

North: 1772667.44 East: 3161478.48 (U.S. survey feet)

Type of monument: Harrison, 4" disk 'Section Corner'

Depth: six inches below adjacent gravel road surface

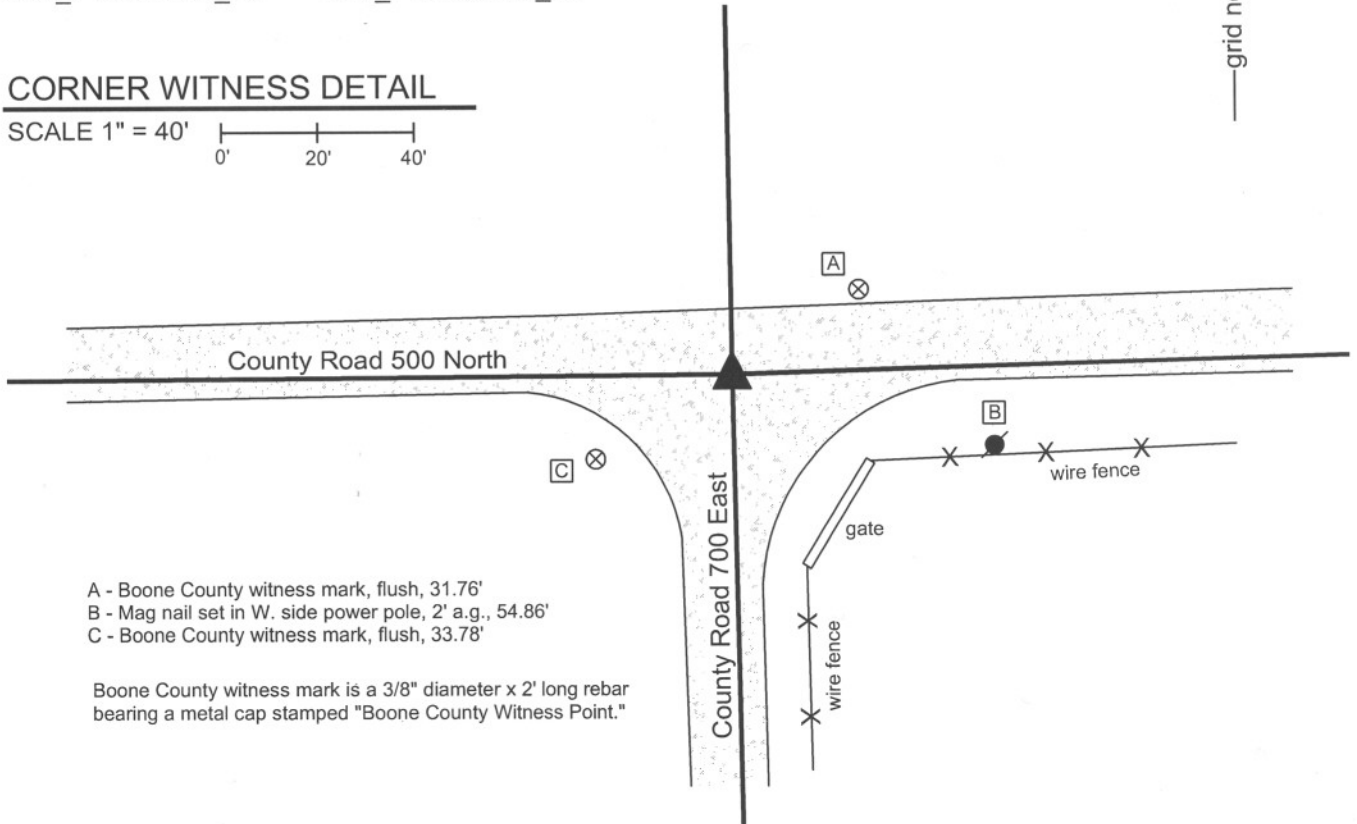
Indiana tie card references:

IN02_T19NR2E06_80 IN02_T19NR2E05_72

IN02_T19NR2E07_08 IN02_T19NR2E08_00

CORNER WITNESS DETAIL

SCALE 1" = 40'



- A - Boone County witness mark, flush, 31.76'
- B - Mag nail set in W. side power pole, 2' a.g., 54.86'
- C - Boone County witness mark, flush, 33.78'

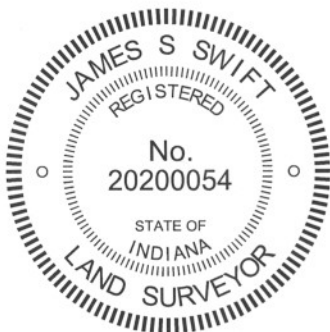
Boone County witness mark is a 3/8" diameter x 2' long rebar bearing a metal cap stamped "Boone County Witness Point."

The harrison monument was set over a stone found.

A BCS record of August 26 - 29, 1868 states "Reestablished from Beech stump, roots of a Oak and an Old Stake. Set Rock 12.9 by 8 marked +. A broken brick under it." A BCS tie card dated June 3, 1974 states "No Stone, Found Rail."

This corner was excavated on March 16, 2011. Prior to excavation, a vertical section of railroad rail was found at 2 inches below the surface of the gravel road. Excavation revealed the stone described in the 1868 record at 16 inches deep. With 8 inches of the top of the stone exposed, it measures 8 inches E-W by 9 inches N-S with a clearly visible etched + on the top. The stone is embedded in the clay layer below the road, with the top of the stone at the bottom of the road bed. A piece of brick was found next to the stone. The stone was held as marking the corner and left in place. The top 8 inches of the stone were encased in concrete and the harrison monument was set directly over the etched + on the top of the stone. The railroad rail, removed during excavation, had been 2.9 feet north and 0.2 foot west of the stone.

This corner was originally established as a wood post in July, 1821.



Kenneth E. Hedge
 Kenneth E. Hedge, County Surveyor

James S. Swift
 James S. Swift, IN LS 20200054
 March 1, 2012

Marion Township

Section 6 T19N, R2E	Section 5 T19N, R2E
Section 7 T19N, R2E	Section 8 T19N, R2E

PHOTOGRAPHIC DOCUMENTATION

Date of photography: March 16, 2011

View of the stone as first exposed.



View of the stone from above and west.



View from above the stone, looking west along County Road 500 North.



View of the stone from above and south.



The stone from above shortly before being encased in concrete as part of setting the harrison monument over the stone.



For details and documentation, refer to related sheet "Section Corner Record."

SECTION CORNER RECORD

NE 500-750

BOONE COUNTY SURVEYOR'S OFFICE

State Plane grid coordinates NAD83 (CORS96):

North: 1772740.46 East: 3164109.43 (U.S. survey feet)

Type of monument: Harrison, 4" disk 'Section Corner'

Depth: six inches below adjacent gravel road surface

Indiana tie card references:

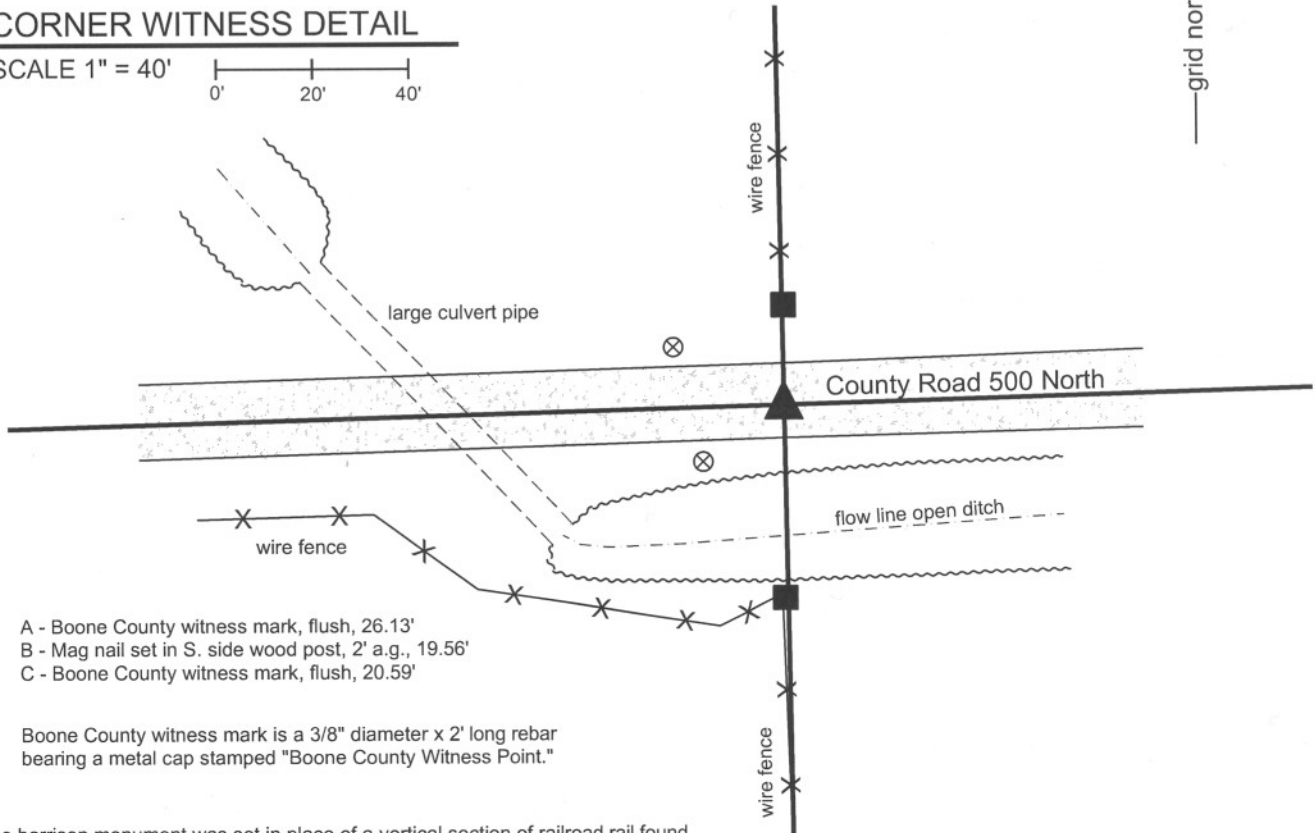
IN02_T19NR2E05_76

IN02_T19NR2E08_04

CORNER WITNESS DETAIL

SCALE 1" = 40'

0' 20' 40'



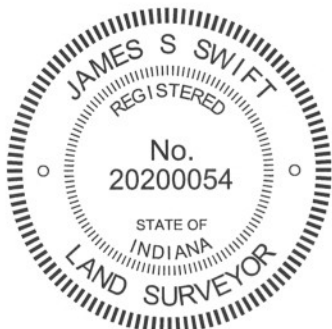
- A - Boone County witness mark, flush, 26.13'
- B - Mag nail set in S. side wood post, 2' a.g., 19.56'
- C - Boone County witness mark, flush, 20.59'

Boone County witness mark is a 3/8" diameter x 2' long rebar bearing a metal cap stamped "Boone County Witness Point."

The Harrison monument was set in place of a vertical section of railroad rail found.

A BCS record of April 22-24, 1884 states "Reest. by measure. Set Rock 14x10x6 + (in ditch). Rock 12x8x8 + brs South 25 links." A BCS record of August 8, 1894 states "Wit Rock See B, Sect. 8, south 25 links. Corner rock gone." A BCS tie card dated June 14, 1974 states "Found Rail."

This corner was excavated on March 16, 2011. A vertical section of railroad rail was found at 11 inches deep in the gravel road. Fill material was found to 2 feet deep and below, which is deeper than the surrounding ground. This fits with the chain of record that indicates that the corner was previously in the ditch. Observation of the ditch to the east/southwest and the northwest indicates that the ditch might certainly have passed across the corner. The ditch has been routed through a large culvert in the immediate vicinity of the corner and the road filled in to run level and straight in this vicinity. The bank of the ditch to the south drops quickly next to the road and it is believed that the witness rock referred to in the 1884 and 1894 records is also gone. The position of the found rail fits with local evidence in the form of being in the center of the East-West road and at the extensions of fences to the north and south. The railroad rail was accepted as the best available evidence of the corner. The rail was removed and replaced with a Harrison monument in the same position. This corner was originally established as a wood post in July, 1821.



Kenneth E. Hedge
 Kenneth E. Hedge, County Surveyor

James S. Swift
 James S. Swift, IN LS 20200054
 March 1, 2012

Marion Twp

Section 5
T19N, R2E

Section 8
T19N, R2E

SECTION CORNER RECORD

NE 500-800

BOONE COUNTY SURVEYOR'S OFFICE

State Plane grid coordinates NAD83 (CORS96):

North: 1772813.88 East: 3166741.30 (U.S. survey feet)

Type of monument: Harrison, 4" disk 'Section Corner'

Depth: One inch below adjacent road surface

Indiana tie card references:

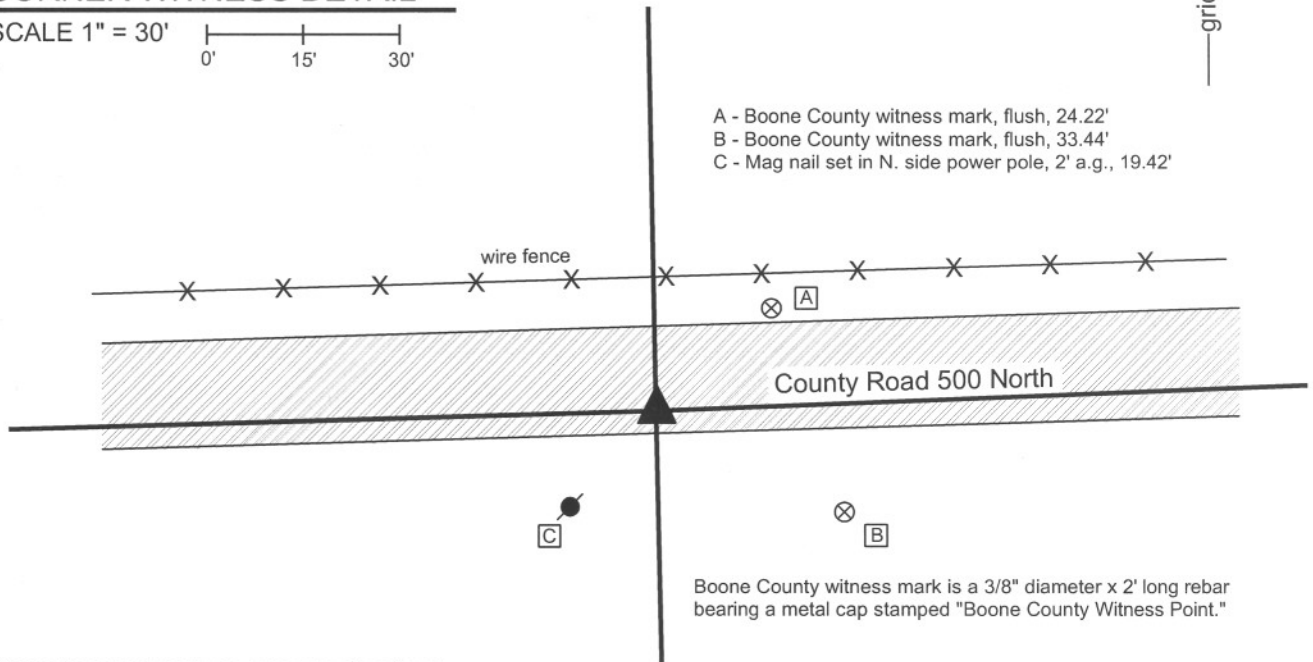
IN02_T19NR2E05_80 IN02_T19NR2E04_72

IN02_T19NR2E08_08 IN02_T19NR2E09_00



CORNER WITNESS DETAIL

SCALE 1" = 30'



- A - Boone County witness mark, flush, 24.22'
- B - Boone County witness mark, flush, 33.44'
- C - Mag nail set in N. side power pole, 2' a.g., 19.42'

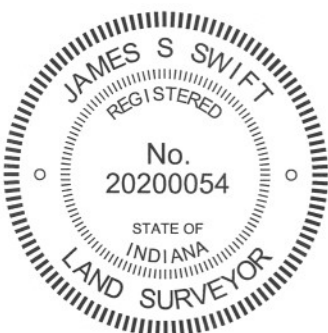
Boone County witness mark is a 3/8" diameter x 2' long rebar bearing a metal cap stamped "Boone County Witness Point."

The harrison monument was set over a stone found.

A BCS record of April 22-24, 1884 states with respect to this and the corner 1/4 mile south "Points found by measure." The corner is also specifically noted in a record of Aug. 15, 1901, though the monument marking the corner is not described in this record. A BCS tie card dated August 11, 1974 states "No Stone Found." A BCS tie card dated January 18, 1994 shows the corner as a "buggy axel". A tie card provided by the Indiana Department of Transportation, dated April 27, 2005 shows the corner as a mag nail.

This corner was excavated on September 26, 2011. Prior to excavation a mag nail was found per the INDOT tie card. Excavation revealed a 1 inch diameter iron pin found at 8 inches deep, below the mag nail. This monument is believed to represent the "buggy axel" shown for in the 1994 tie card. The iron pin was removed and determined to be a hollow iron pipe, 24 inches long, with a solid end which had been at the top. The source of this monument is not known. It does not match the characteristics of other monuments found associated with 1974 tie cards. Further excavation revealed a stone found at 13 deep. With the top 12 inches of the stone exposed, it measured 6 inches N-S by 5 inches E-W. It is estimated that the total height of the stone was 15-17 inches. The stone was vertical, oriented in cardinal directions and embedded in the clay layer below the road, with the top of the stone at the bottom of the road bed. The stone was accepted as the best available evidence of the corner. The stone was left in place, with the top 3 inches encased in concrete and the harrison monument was set directly over the top, center of the stone. The mag nail and iron pipe, both removed during excavation, had been 1.8 feet north and 2.3 feet west of the stone.

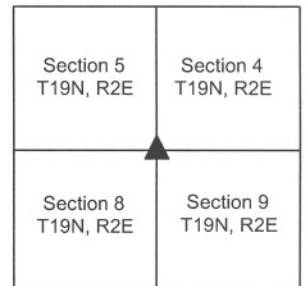
This corner was originally established as a wood post in July, 1821.



Kenneth E. Hedge
 Kenneth E. Hedge, County Surveyor

James S. Swift
 James S. Swift, IN LS 20200054
 March 1, 2012

Marion Township



PHOTOGRAPHIC DOCUMENTATION

Date of photography: September 26, 2011

View of the stone as first exposed.



View of the stone from the west.



View of the stone from the north.



For details and documentation, refer to related sheet "Section Corner Record."