

SECTION CORNER RECORD

BOONE COUNTY SURVEYOR'S OFFICE

NW 400-400

State Plane grid coordinates NAD83 (2011):
 North: 1766617.92 East: 3103604.40 (U.S. survey feet)

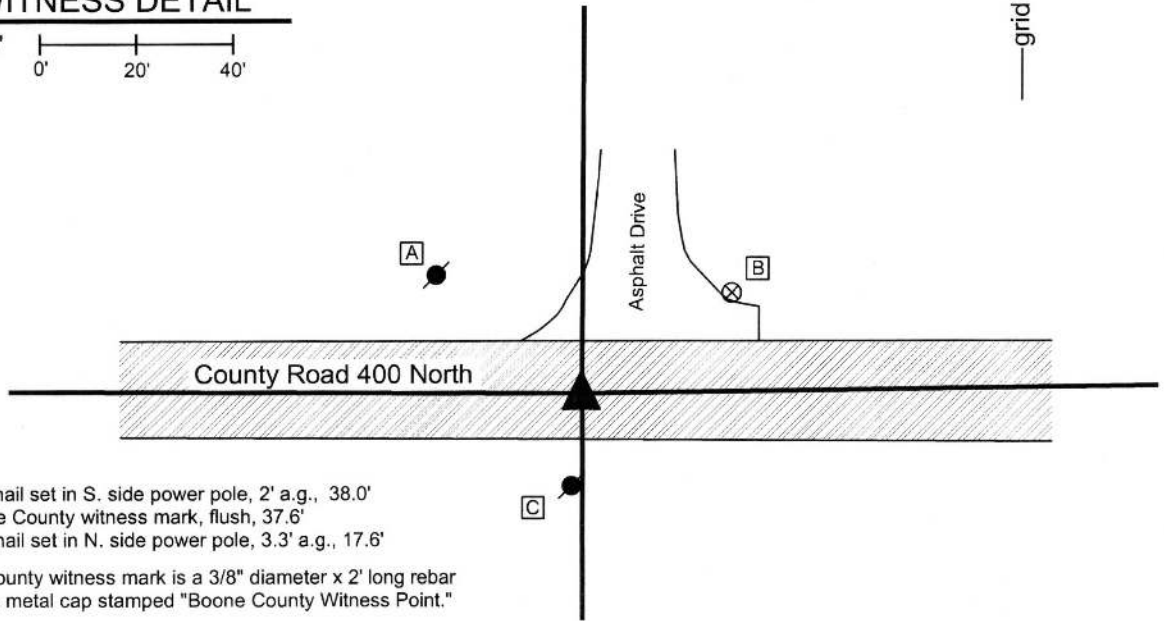
Type of monument: Harrison, 4" disk 'Section Corner'
 Depth: One inch below adjacent road surface

Indiana tie card references:
 IN02_T19NR1W07_80 IN02_T19NR1W08_72
 IN02_T19NR1W18_08 IN02_T19NR1W17_00



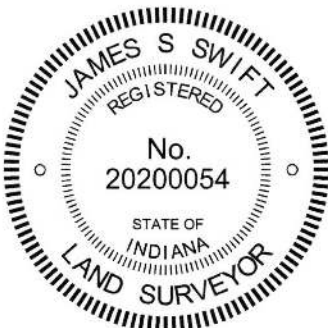
CORNER WITNESS DETAIL

SCALE 1" = 40'



- A - Mag nail set in S. side power pole, 2' a.g., 38.0'
 - B - Boone County witness mark, flush, 37.6'
 - C - Mag nail set in N. side power pole, 3.3' a.g., 17.6'
- Boone County witness mark is a 3/8" diameter x 2' long rebar bearing a metal cap stamped "Boone County Witness Point."

The Harrison monument was set in place of a vertical section of railroad rail found. No specific descriptions of this corner were found in the BCS Surveyor's Record, though the corner is mentioned as the terminal point for measurements in records of 1837 and 1859. A BCS tie card dated March 14, 1970 states "no stone." This corner was excavated on June 26, 2015. Prior to excavation, a Mag nail was found at the surface of the road. Excavation revealed a vertical section of railroad rail at 12 inches deep, slightly N.W. of the nail. Further excavation of an area extending 3 feet north, 2 feet south, 2.5 feet east and 2.5 feet west of the nail and rail revealed no further evidence of the corner. The bottom of the road bed was found at 16 to 18 inches deep. Excavation was performed to approximately 20 inches. Evidence of an old drainage tile was found at the east edge of the area of excavation, indicating some previous disruption to the ground in the vicinity of the corner. Numerous small rocks were found in the base layer of the road but none of them had the characteristics of a specifically set corner stone. Though the 1970 tie card made no mention of the railroad rail, a pencil notation put in the BCS Surveyor's record from the same date (3/14/1970) states "No stone - set railroad rail." The rail was held as marking the corner. The rail was removed during excavation and a Harrison monument was set in the position of the rail. The Mag nail had been 0.2 foot south and 0.2 foot east of this point. This corner was originally established as a wood post in 1829.



Kenneth E. Hedge, County Surveyor

James S. Swift, IN LS 20200054
 March 24, 2016

Washington Township

Section 8 T19N, R1W	Section 9 T19N, R1W
Section 17 T19N, R1W	Section 16 T19N, R1W

SECTION CORNER RECORD

BOONE COUNTY SURVEYOR'S OFFICE

NW 400-450

State Plane grid coordinates NAD83 (2011):

North: 1766628.12 East: 3100987.25 (U.S. survey feet)

Type of monument: Harrison, 4" disk 'Section Corner'

Depth: One inch below adjacent road surface

Indiana tie card references:

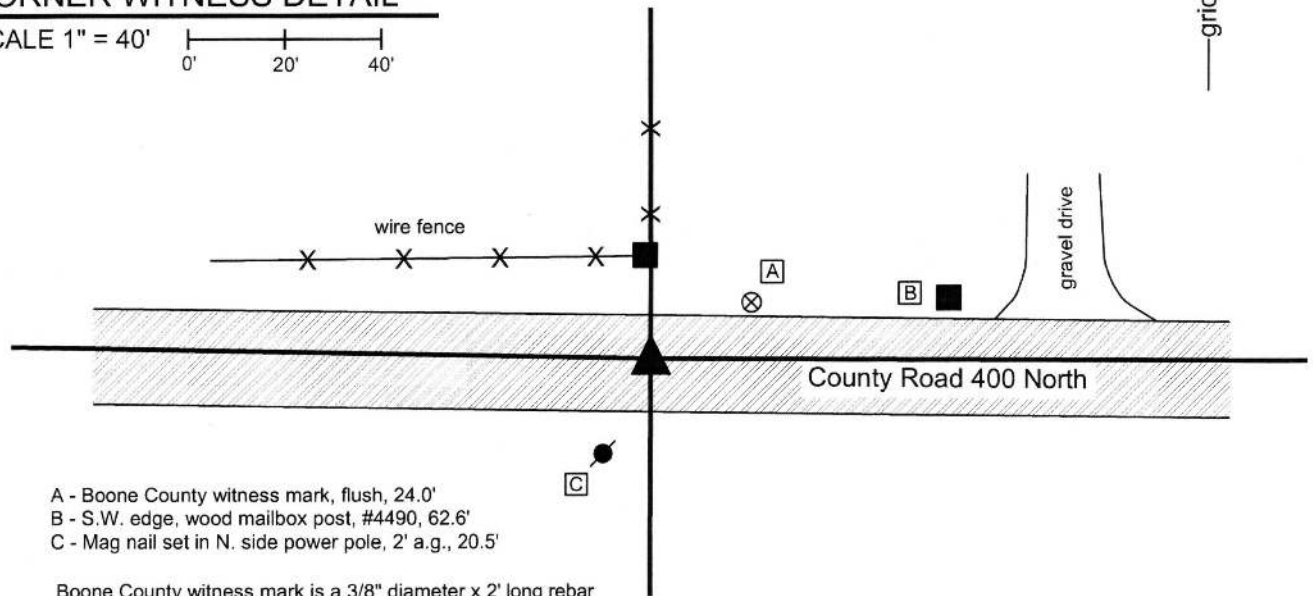
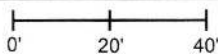
IN02_T19NR1W17_76

IN02_T19NR1W20_04



CORNER WITNESS DETAIL

SCALE 1" = 40'



- A - Boone County witness mark, flush, 24.0'
- B - S.W. edge, wood mailbox post, #4490, 62.6'
- C - Mag nail set in N. side power pole, 2' a.g., 20.5'

Boone County witness mark is a 3/8" diameter x 2' long rebar bearing a metal cap stamped "Boone County Witness Point."

The Harrison monument was set in place of a vertical section of railroad rail found.

No specific descriptions of this corner were found in the BCS Sureyor's Record beyond the original establishment of the corner as a wood post in 1829 and a pencil notation dated March 9, 1970 which states "No Stone - set railroad rail." A BCS tie card from the same date simply states "No Stone."

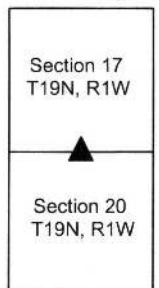
This corner was excavated on April 27, 2015. Prior to excavation, a Mag nail was found at the surface of the asphalt roadway. Excavation revealed a railroad rail found at 7 inches deep, slightly S.W. of the Mag nail. Further excavation of an area extending 2.5 feet in all cardinal directions centered on the nail and rail produced no further evidence of the corner. Excavation was performed to a minimum of 30 inches deep, well into the clay layer below the road bed. The railroad rail was held as marking the corner. The rail was removed during excavation and was replaced with a Harrison monument in the same position. The Mag nail had been 0.15 east and 0.1 foot north of this point.



Kenneth E. Hedge
 Kenneth E. Hedge, County Surveyor

James S. Swift
 James S. Swift, IN LS 20200054
 March 24, 2016

Washington Township



SECTION CORNER RECORD

NW 400-500

BOONE COUNTY SURVEYOR'S OFFICE

State Plane grid coordinates NAD83 (2011):

North: 1766677.97 East: 3098367.67 (U.S. survey feet)

Type of monument: Harrison, 4" disk 'Section Corner'

Depth: One inch below adjacent road surface

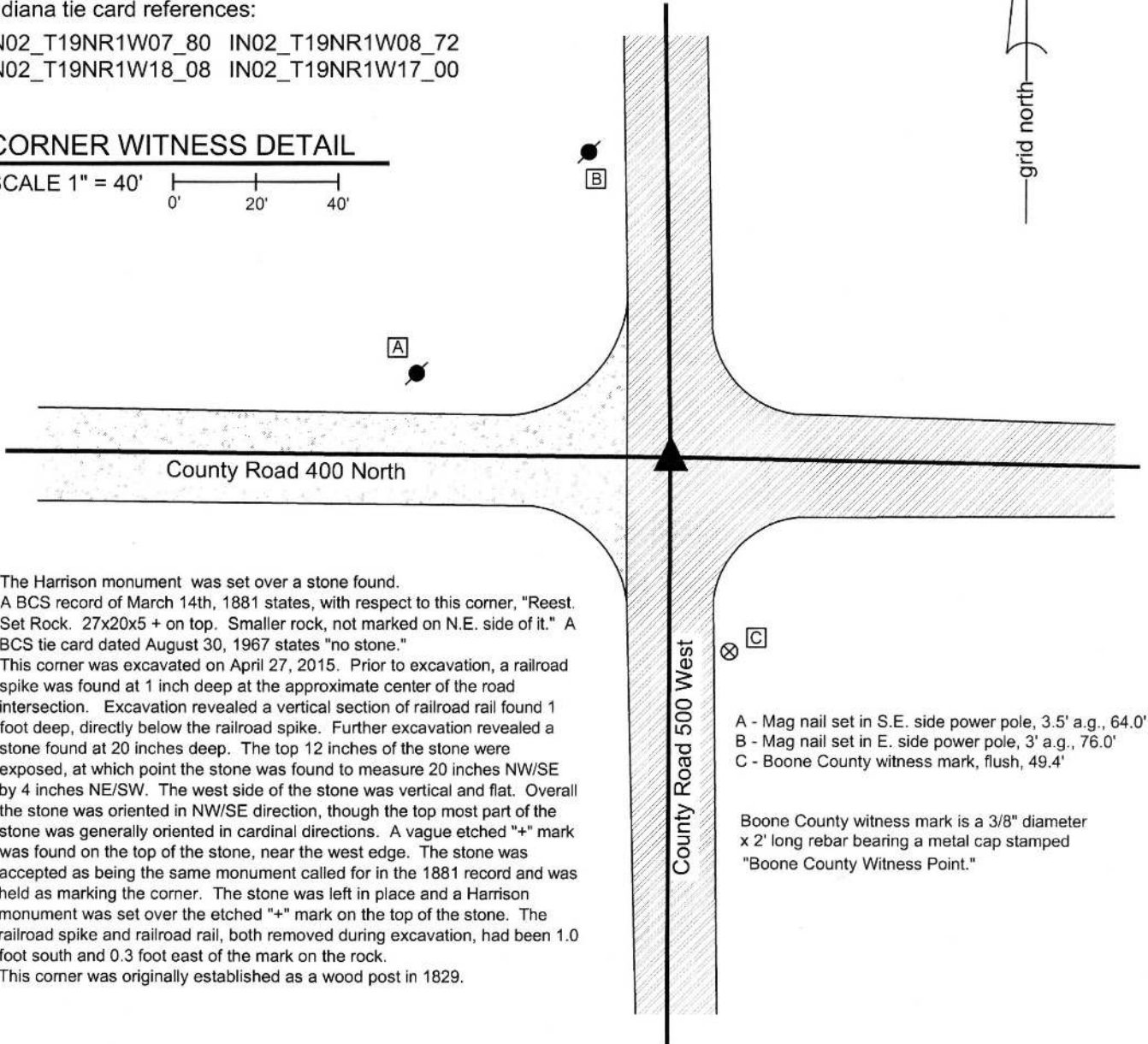
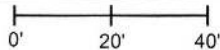
Indiana tie card references:

IN02_T19NR1W07_80 IN02_T19NR1W08_72

IN02_T19NR1W18_08 IN02_T19NR1W17_00

CORNER WITNESS DETAIL

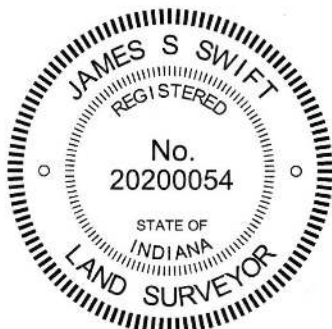
SCALE 1" = 40'



The Harrison monument was set over a stone found. A BCS record of March 14th, 1881 states, with respect to this corner, "Reest. Set Rock. 27x20x5 + on top. Smaller rock, not marked on N.E. side of it." A BCS tie card dated August 30, 1967 states "no stone." This corner was excavated on April 27, 2015. Prior to excavation, a railroad spike was found at 1 inch deep at the approximate center of the road intersection. Excavation revealed a vertical section of railroad rail found 1 foot deep, directly below the railroad spike. Further excavation revealed a stone found at 20 inches deep. The top 12 inches of the stone were exposed, at which point the stone was found to measure 20 inches NW/SE by 4 inches NE/SW. The west side of the stone was vertical and flat. Overall the stone was oriented in NW/SE direction, though the top most part of the stone was generally oriented in cardinal directions. A vague etched "+" mark was found on the top of the stone, near the west edge. The stone was accepted as being the same monument called for in the 1881 record and was held as marking the corner. The stone was left in place and a Harrison monument was set over the etched "+" mark on the top of the stone. The railroad spike and railroad rail, both removed during excavation, had been 1.0 foot south and 0.3 foot east of the mark on the rock. This corner was originally established as a wood post in 1829.

- A - Mag nail set in S.E. side power pole, 3.5' a.g., 64.0'
- B - Mag nail set in E. side power pole, 3' a.g., 76.0'
- C - Boone County witness mark, flush, 49.4'

Boone County witness mark is a 3/8" diameter x 2' long rebar bearing a metal cap stamped "Boone County Witness Point."



Kenneth E. Hedge
Kenneth E. Hedge, County Surveyor

James S. Swift
James S. Swift, IN LS 20200054
March 24 2016

Washington Township

Section 7 T19N, R1W	Section 8 T19N, R1W
Section 18 T19N, R1W	Section 17 T19N, R1W

SECTION CORNER RECORD

NW 450-500

BOONE COUNTY SURVEYOR'S OFFICE

State Plane grid coordinates NAD83 (2011):

North: 1769323.26 East: 3098331.23 (U.S. survey feet)

Type of monument: Harrison, 4" disk 'Section Corner'

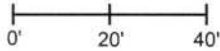
Depth: One inch below adjacent road surface

Indiana tie card references:

IN02_T19NR1W07_44 IN02_T19NR1W08_36

CORNER WITNESS DETAIL

SCALE 1" = 40'

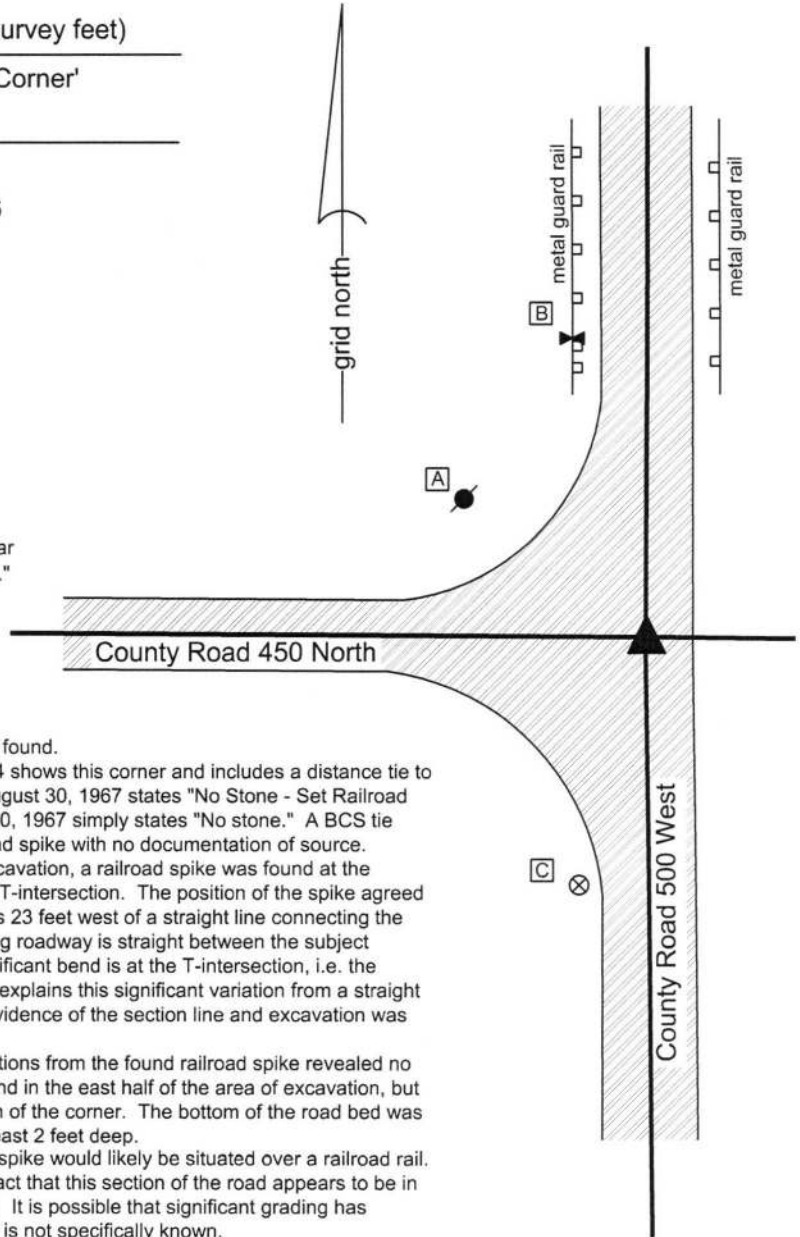


A - Mag nail set in S.E. side power pole, 2' a.g., 45.9'

B - Chisel mark in top of guard rail post, 63.8'

C - Boone County witness mark, flush, 53.4'

Boone County witness mark is a 3/8" diameter x 2' long rebar bearing a metal cap stamped "Boone County Witness Point."



The Harrison monument was set in place of a railroad spike found.

An entry in the BCS Surveyor's Record dated April 1st, 1854 shows this corner and includes a distance tie to one tree but gives no further information. An entry dated August 30, 1967 states "No Stone - Set Railroad Rail." The corresponding BCS tie card, also dated August 30, 1967 simply states "No stone." A BCS tie card dated September 1, 1995 shows the corner as a railroad spike with no documentation of source.

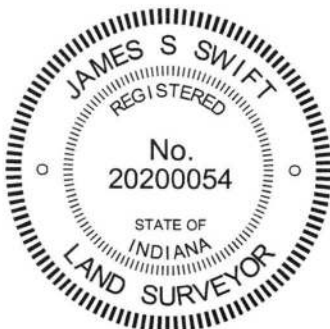
This corner was excavated on August 11, 2015. Prior to excavation, a railroad spike was found at the surface of the asphalt road in the approximate center of the T-intersection. The position of the spike agreed with the 1995 distance ties. It is noted that this monument is 23 feet west of a straight line connecting the adjacent section corners to the north and south. The existing roadway is straight between the subject corner and the adjacent corners and the only apparent, significant bend is at the T-intersection, i.e. the subject corner. No evidence was found in the record which explains this significant variation from a straight line. The existing N-S roadway was accepted as the best evidence of the section line and excavation was performed accordingly.

Excavation of an area extending 2.5 feet in all cardinal directions from the found railroad spike revealed no further evidence of the corner. A fragment of wood was found in the east half of the area of excavation, but was not held as sufficient evidence to determine the position of the corner. The bottom of the road bed was found at 21 inches deep. Excavation was performed to at least 2 feet deep.

Based on the 1967 record, it was expected that the railroad spike would likely be situated over a railroad rail. No rail was found. One possible explanation for this is the fact that this section of the road appears to be in an area of either cut (east and south) or fill (west and north). It is possible that significant grading has occurred at this intersection since 1967, but that information is not specifically known.

In any case, the railroad spike fit with local evidence in the form of the existing roadways to the north, south, and west, and fit with the distance ties on the 1995 tie card. The railroad spike was held as marking the corner. The spike was removed during excavation and replaced with a Harrison monument in the same position.

This corner was originally established as a wood post in 1829.



Kenneth E. Hedge

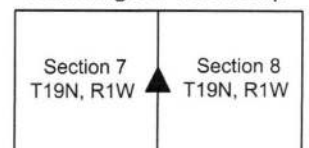
 Kenneth E. Hedge, County Surveyor

James S. Swift

 James S. Swift, IN LS 20200054

March 28, 2016, revised March 23, 2017

Washington Township



PHOTOGRAPHIC DOCUMENTATION

Date of photography: April 27, 2015

The top of the stone as it was originally exposed. Also visible is the hole from which the rail was pulled, south of the stone.



The stone more fully exposed, showing the vertical west edge and the sloping ridge along the south edge.



View from the south, looking across the stone and north along County Road 500 West.



View from above the stone, looking east along County Road 400 North.



For details and documentation, refer to related sheet "Section Corner Record."

SECTION CORNER RECORD

NW 500-450

BOONE COUNTY SURVEYOR'S OFFICE

State Plane grid coordinates NAD83 (2011):

North: 1771922.23 East: 3100971.90 (U.S. survey feet)

Type of monument: Harrison, 4" disk 'Section Corner'

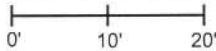
Depth: Three inches above adjacent grade

Indiana tie card references:

IN02_T19NR1W05_76 IN02_T19NR1W08_04

CORNER WITNESS DETAIL

SCALE 1" = 20'



A - The Harrison monument is 0.4' WNW of WNW edge of wood corner post

B - N.W. edge, 28" diameter beech tree, 11.1'

C - W. edge, 14" hackberry tree, 22.4'

The Harrison monument was set at the N.W. edge of a wood corner post and the east edge of a stone found.

A BCS record dated October 9, 1868 states, with respect to this corner, "Found notch in both trees. Found that a stone has been set at poplar bearing and dist from a W Oak that brs S52W, 18 [links] from mark of the stump of true oak witness."

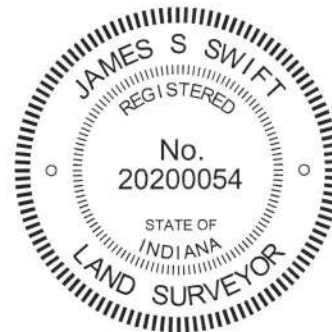
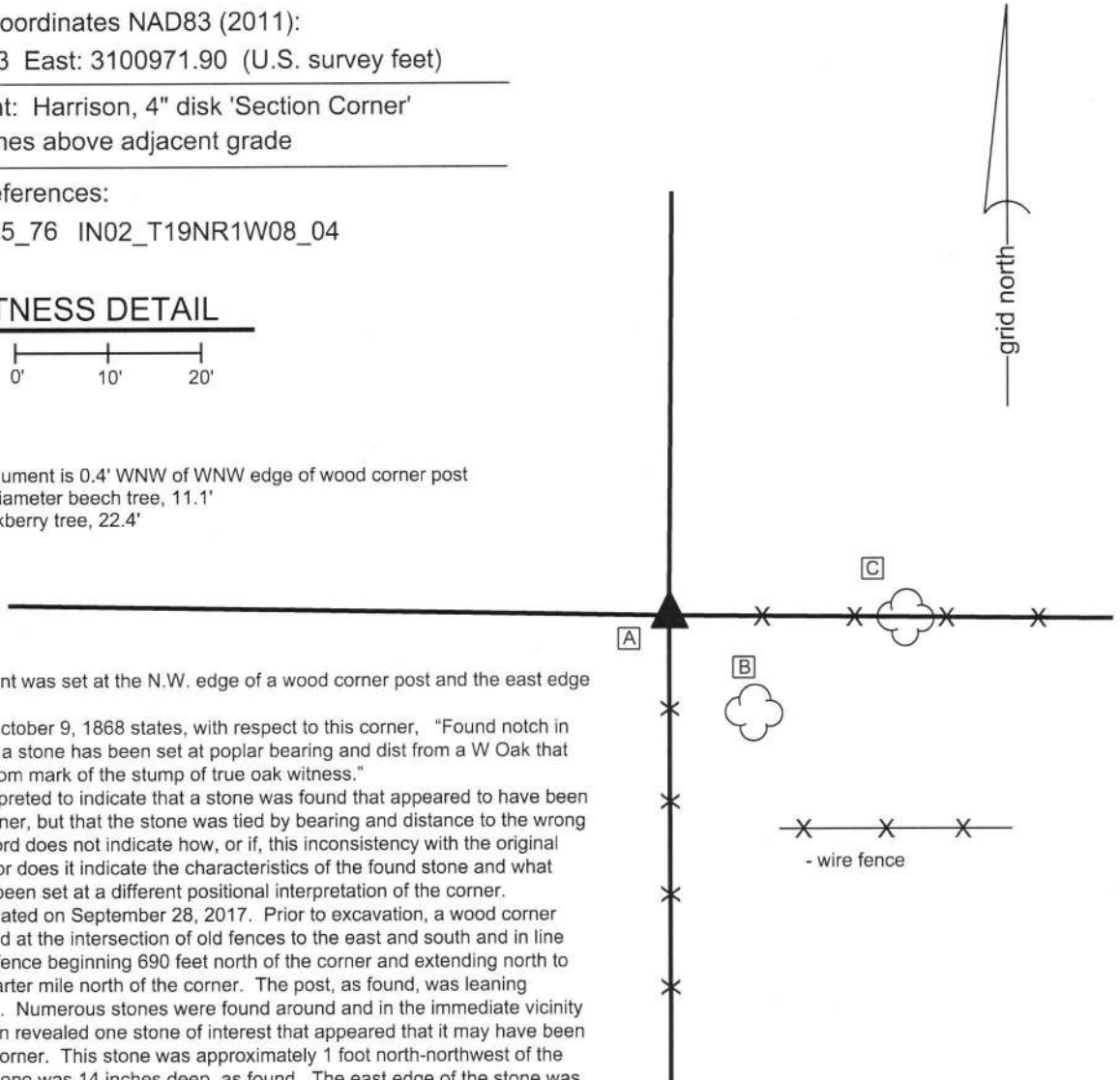
This statement is interpreted to indicate that a stone was found that appeared to have been set as marking the corner, but that the stone was tied by bearing and distance to the wrong bearing tree. The record does not indicate how, or if, this inconsistency with the original notes was resolved, nor does it indicate the characteristics of the found stone and what monument may have been set at a different positional interpretation of the corner.

This corner was excavated on September 28, 2017. Prior to excavation, a wood corner post was found situated at the intersection of old fences to the east and south and in line with an old section of fence beginning 690 feet north of the corner and extending north to approximately one quarter mile north of the corner. The post, as found, was leaning slightly south and east. Numerous stones were found around and in the immediate vicinity of the post. Excavation revealed one stone of interest that appeared that it may have been intended to mark the corner. This stone was approximately 1 foot north-northwest of the post. The top of the stone was 14 inches deep, as found. The east edge of the stone was flat and vertical and an apparent high point was visible on the top of the stone. Given the lack of specificity of the records and the uncertainty reported in the 1868 record, as well as the presence of numerous other rocks in the vicinity, the stone could not be positively identified as marking the corner. The Harrison monument was established at the west edge of the post, between the stone and the post, anchored to the stone and situated partially above the subterranean base of the post. The stone is approximately 0.5 foot west of the monument. The post, at the point where it is flush with the ground, is approximately 0.4 east-southeast of the monument. Hence uncertainties of one-half foot in all directions may be attributed to the position of the corner with respect to the found evidence.

It is observed that this corner falls approximately 12 feet south and 10 feet west of the midpoint between the approximate positions of the original corners to the east and west.

The existing, old fence is held as superior evidence to the straight east-west line.

This corner was originally established as a wood post in 1829.



Washington Township

Section 5
T19N, R1W

Section 8
T19N, R1W

James S. Swift
James S. Swift, IN LS 20200054

Kenneth E. Hedge
Kenneth E. Hedge, County Surveyor

October 3, 2017

SECTION CORNER RECORD

NW 500-500

BOONE COUNTY SURVEYOR'S OFFICE

State Plane grid coordinates NAD83 (2011):

North: 1771968.50 East: 3098340.82 (U.S. survey feet)

Type of monument: Harrison, 4" disk 'Section Corner'

Depth: One inch below adjacent road surface

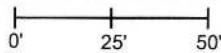
Indiana tie card references:

IN02_T19NR1W06_80 IN02_T19NR1W05_72

IN02_T19NR1W07_08 IN02_T19NR1W08_00

CORNER WITNESS DETAIL

SCALE 1" = 50'



A - Mag nail set in S.E. side power pole, 2' a.g., 143.8'

B - Boone County witness mark, flush, 18.2'

C - Boone County witness mark, flush, 19.4'

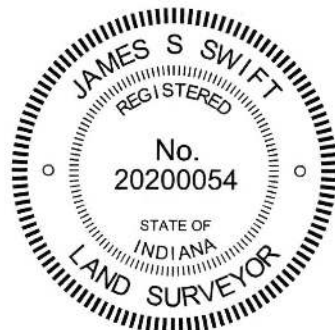
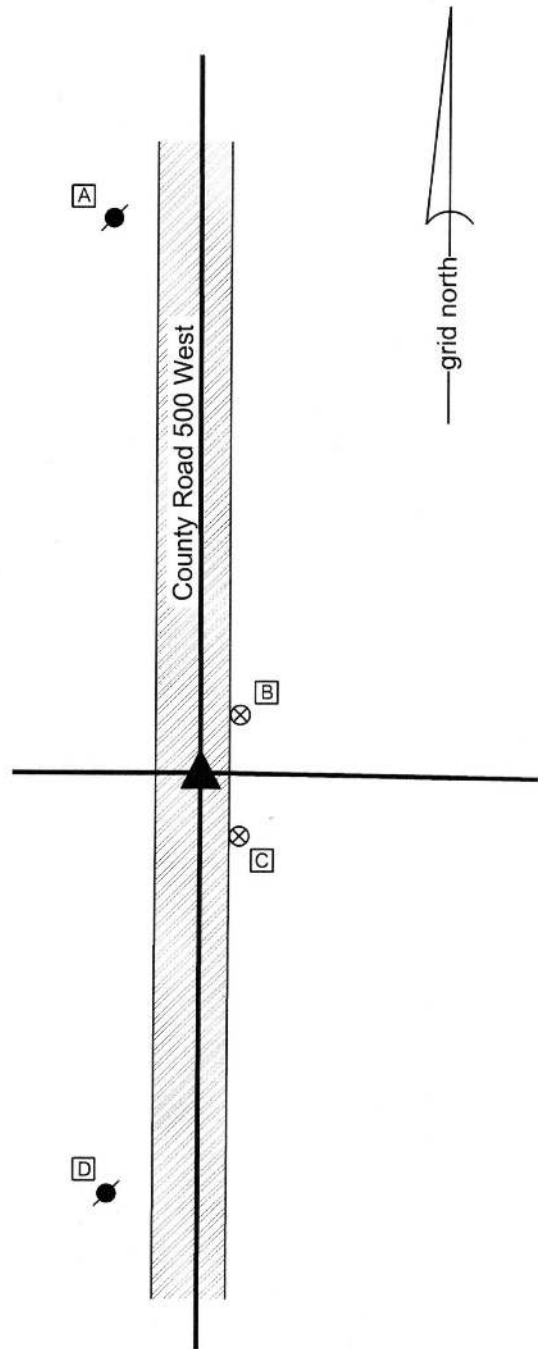
D - Mag nail set in N.E. side power pole, 2' a.g., 109.6'

Boone County witness mark is a 3/8" diameter x 2' long rebar bearing a metal cap stamped "Boone County Witness Point."

The Harrison monument was set over a stone found.

A BCS record dated January 29-February 1, 1870 states, with respect to this corner, "Reest from both trees. Elm dead cut out notch. Set a rock 16.10.7 +." No modern tie cards were found referencing this corner.

Excavation was performed at this corner on April 24, 2015. Prior to excavation, a Mag nail was found at the surface of the asphalt roadway. Excavation revealed a rebar with a metal cap bearing the name of Carl Anderson at 10 inches deep. The rebar was 1.0 foot west and 0.6 foot north of the Mag nail. Further excavation revealed a stone found at 15 inches deep, east of the other two monuments. With 8 inches of the top of the stone exposed, it measured 10 inches N-S by 8 inches E-W and appeared to be vertical and yet much taller. The stone was fully embedded in the clay layer below the road, with the top of the stone at the bottom of the road bed. The stone has a flap top and an etched "+" mark was visible toward the S.W. edge of the top of the stone. The stone was accepted as representing the monument described in the 1870 record and was held as marking the corner. A Harrison monument was set over the etched mark on the top of the stone. The Mag nail and capped rebar were both removed during excavation. The Mag nail had been 1.2 feet north and 1.9 feet west of the mark on the stone. The rebar had been 1.8 feet north and 2.9 feet west of the mark on the stone. This corner was originally established as a wood post in 1829.



Kenneth E. Hedge
 Kenneth E. Hedge, County Surveyor

James S. Swift
 James S. Swift, IN LS 20200054
 March 28, 2016

Washington Township

Section 6 T19N, R1W	Section 5 T19N, R1W
Section 7 T19N, R1W	Section 8 T19N, R1W