

SECTION CORNER RECORD

BOONE COUNTY SURVEYOR'S OFFICE

SW 100-1000

State Plane grid coordinates NAD83 (2011):

North: 1740003.33 East: 3071980.53 (U.S. survey feet)

Type of monument: Harrison, 4" disk 'Section Corner'

Depth: One inch below adjacent road surface

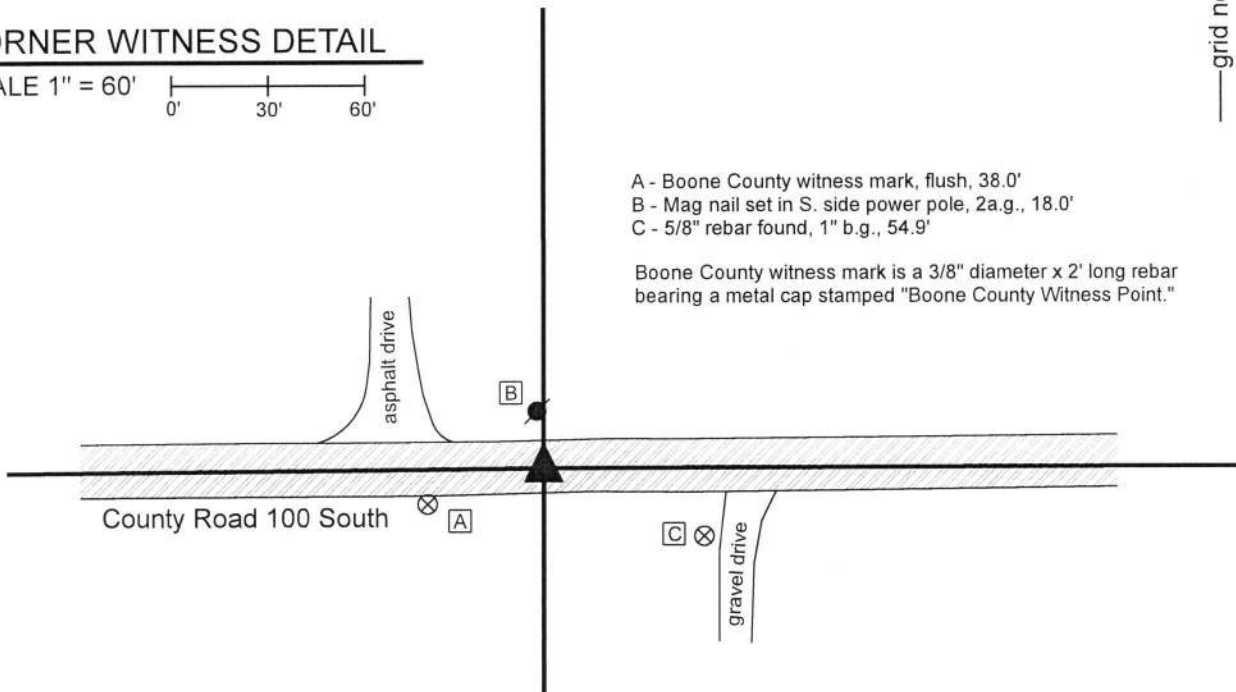
Indiana tie card references:

IN02_T18NR2W05_80 IN02_T18NR2W04_72

IN02_T18NR2W08_08 IN02_T18NR2W09_00

CORNER WITNESS DETAIL

SCALE 1" = 60'



- A - Boone County witness mark, flush, 38.0'
- B - Mag nail set in S. side power pole, 2a.g., 18.0'
- C - 5/8" rebar found, 1" b.g., 54.9'

Boone County witness mark is a 3/8" diameter x 2' long rebar bearing a metal cap stamped "Boone County Witness Point."



The Harrison monument was set in place of a vertical section of railroad rail.

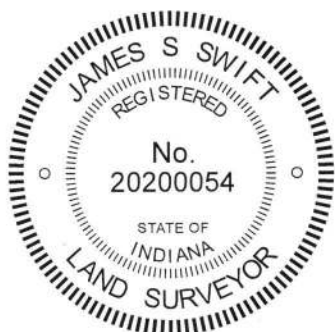
A BCS record dated November 2, 1857 states, with respect to this corner, "Reest. from stumps of both trees. Set Rock 16,12,5 +."

A BCS tie card dated October 17, 1968 calls the corner "No stone - RRR set."

This corner was excavated on July 26, 2019. Prior to excavation, a mag nail was found at the surface of the road. Excavation revealed a railroad rail found at 5 inches deep, the top, center of which was slightly northwest of the nail. Further excavation of an area extending 2.5 feet north, 2.5 feet east, 3.5 feet south and 3.5 feet west of the nail and rail did not reveal any further evidence of the corner. Further probing approximately 18 inches north of the area of excavation also yielded no further evidence. The bottom of the road bed was found at 16 inches deep. Excavation was performed to at least 18 inches deep. Numerous fist sized rocks were found at the bottom of the road bed, indicating that the area had been previously wet and muddy, which may explain why no stone was found.

The rail was held as marking the corner. The rail was removed and replaced with a Harrison monument in the same horizontal position. The nail had been 0.2 foot south and 0.2 foot east of the top, center-of-mass of the rail.

This corner was originally established as a wood post in 1820.



Kenneth E. Hedge
 Kenneth E. Hedge, County Surveyor

James S. Swift
 James S. Swift, IN LS 20200054
 August 28, 2019

Jefferson Township

Section 5 T18N, R2W	Section 4 T18N, R2W
Section 8 T18N, R2W	Section 9 T18N, R2W

SECTION CORNER RECORD

SW 100-1050

BOONE COUNTY SURVEYOR'S OFFICE

State Plane grid coordinates NAD83 (2011):

North: 1739980.62 East: 3069331.45 (U.S. survey feet)

Type of monument: Harrison, 4" disk 'Section Corner'

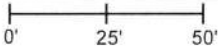
Depth: Four inches below adjacent road surface

Indiana tie card references:

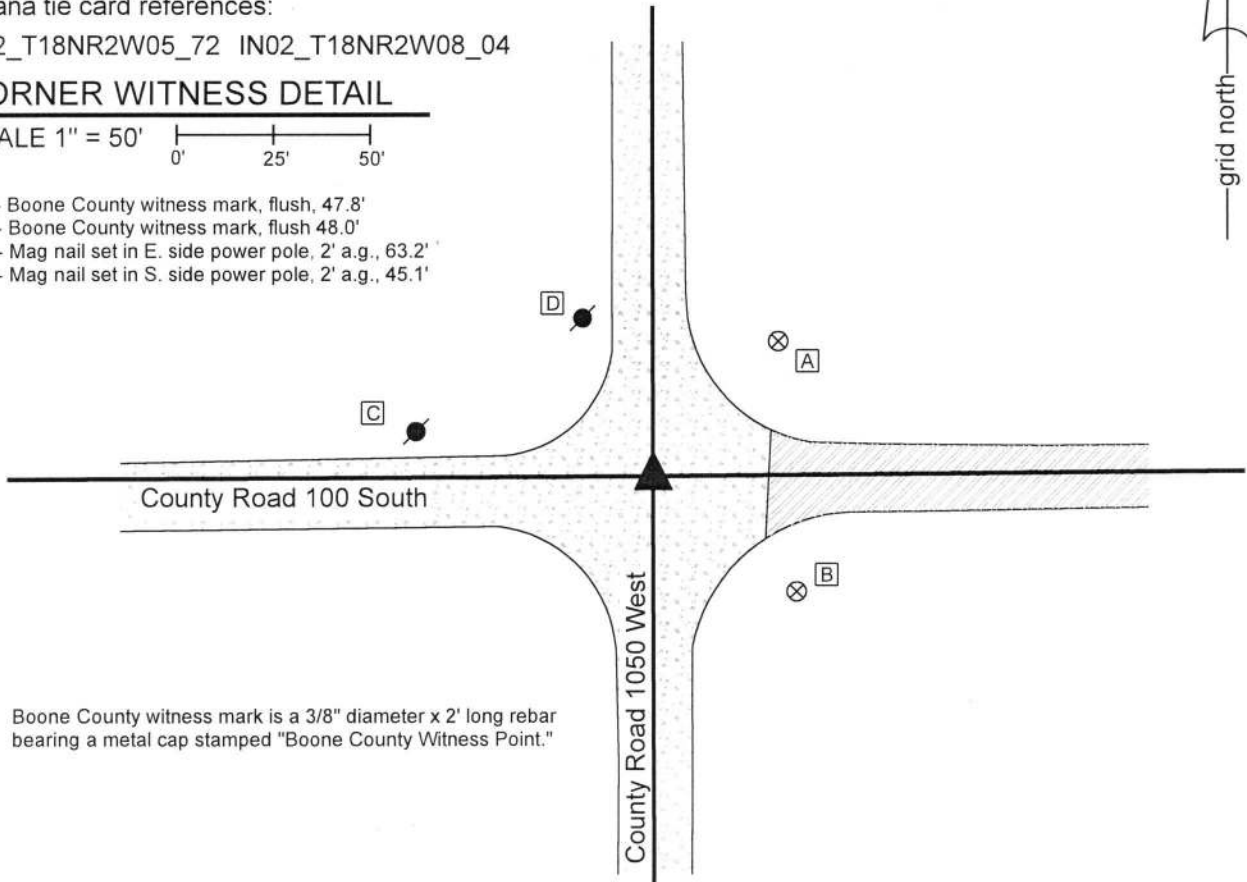
IN02_T18NR2W05_72 IN02_T18NR2W08_04

CORNER WITNESS DETAIL

SCALE 1" = 50'



- A - Boone County witness mark, flush, 47.8'
- B - Boone County witness mark, flush 48.0'
- C - Mag nail set in E. side power pole, 2' a.g., 63.2'
- D - Mag nail set in S. side power pole, 2' a.g., 45.1'



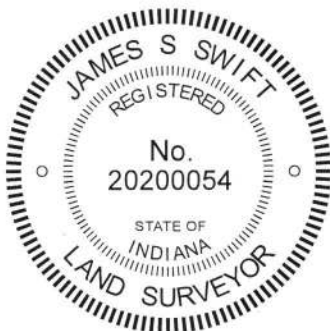
Boone County witness mark is a 3/8" diameter x 2' long rebar bearing a metal cap stamped "Boone County Witness Point."

The Harrison monument was set over a stone found.

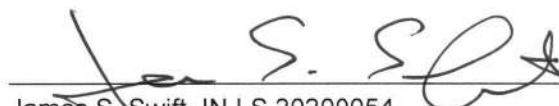
A BCS record dated October 5-6, 1897 states, with respect to this corner, "Set Rock 8x12x18." No recent BCS tie cards were found referencing this corner.

Excavation was performed at this corner on July 31, 2019. Prior to excavation, an iron pin was found at 4 inches deep at the approximate center of the intersection of the two county roads. The pin was removed and found to be a square shafted spike 12 inches long. Excavation revealed a stone found at 10 inches deep, north and slightly west of the spike. The stone had a clearly etched "+" mark at the top, high point. It was vertical with the east and west sides being flat and vertical while the north and south sides sloped. At 9 inches below the top, the stone measured 8 inches E-W and 12 inches N-S. The south side of the stone was fully exposed and measured to be 16 inches tall. The stone may be taller, as only the south edge was fully exposed. The stone was accepted as being the same monument described in the 1897 record and was held as marking the corner. A Harrison monument was broken off at 4 inches tall, the top 9 inches of the stone were encased in concrete and the monument was set directly over the etched mark on the top of the stone. The square shafted spike had been 1.0 foot south and 0.3 foot east of the mark on the stone.

This corner was originally established as a wood post in 1820.




Kenneth E. Hedge, County Surveyor


James S. Swift, IN LS 20200054
August 28, 2018

Jefferson Township

Section 5
T18N, R2W

Section 8
T18N, R2W

SECTION CORNER RECORD

BOONE COUNTY SURVEYOR'S OFFICE

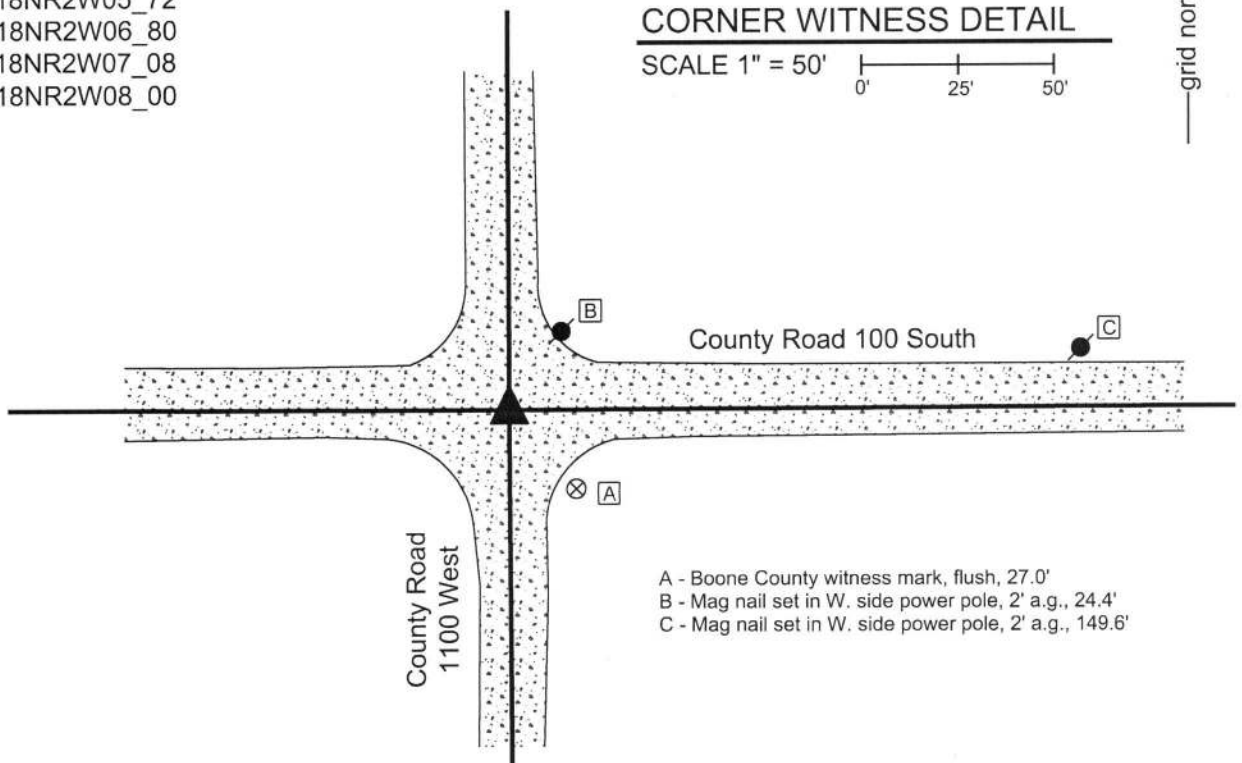
SW 100-1100

State Plane grid coordinates NAD83 (2011):
 North: 1739969.79 East: 3066677.34 (U.S. survey feet)

Type of monument: Harrison, 4" disk 'Section Corner'
 Depth: Six inches below adjacent gravel road surface.

Indiana tie card references:

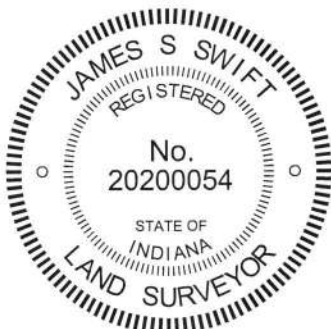
- IN02_T18NR2W05_72
- IN02_T18NR2W06_80
- IN02_T18NR2W07_08
- IN02_T18NR2W08_00



The Harrison monument was set over a stone found. No specific descriptions of this corner were found in the BCS Surveyor's Record, though the corner is mentioned as the terminal point for measurements in entries of 1835, 1897 and 1898, indicating that some monument was present from which to measure at those times. In particular, the 1897 and 1898 measurement references indicate the presence of a known monument at the corner. A BCS tie card dated May 19, 1994 shows the corner as a rebar with no reference to source or origin.

This corner was excavated on April 12, 2019. Prior to excavation, a 5/8 inch diameter rebar was found slightly below the surface of the road. The rebar was bent substantially, clearly disturbed in its position. A 1/2 inch diameter rebar was found slightly south of the 5/8 inch rebar. Excavation revealed a stone found at 11 inches deep, south and west of the rebars. The top 10 inches of the stone were exposed, as which point it measured 4 inches N-S by 8 inches E-W. With the top 10 inches exposed, the stone was entirely stable in the ground, indicating that it is yet substantially taller. The stone was oriented in cardinal directions and the south edge of the stone is flat and vertical. No specific marks were observed on the stone. It is fully embedded in the clay layer below the road, protruding 1 inch into the bottom of the road bed. The stone has a clear a distinct high point at the top, center. The stone was accepted as the best available evidence of the original position of the corner and the top, center high point was held as the specific position of the corner. The top 10 inches of the stone were encased in concrete and a Harrison monument, broken off at 4 inches, was set directly over the high point. The 5/8 inch rebar, removed during excavation, had been approximately 1 foot east and 2 feet north of the stone. This monument is most likely the same monument as is called in the 1994 tie card, though insufficient distance tie references were available to positively confirm this fact.

This corner was originally established as a wood post in 1820.



Kenneth E. Hedge
 Kenneth E. Hedge, County Surveyor

James S. Swift
 James S. Swift, IN LS 20200054

April 30, 2019

Jefferson Township

Section 6 T18N, R2W	Section 5 T18N, R2W
Section 7 T18N, R2W	Section 8 T18N, R2W

SECTION CORNER RECORD

SW 150-1000

BOONE COUNTY SURVEYOR'S OFFICE

State Plane grid coordinates NAD83 (2011):

Corner: North: 1737350.56 East: 3072008.30 (U.S. survey feet)

Witness: North: 1737351.06 East: 3072008.30 (U.S. survey feet)

Corner Monument: Wood corner post, 7" x 7"

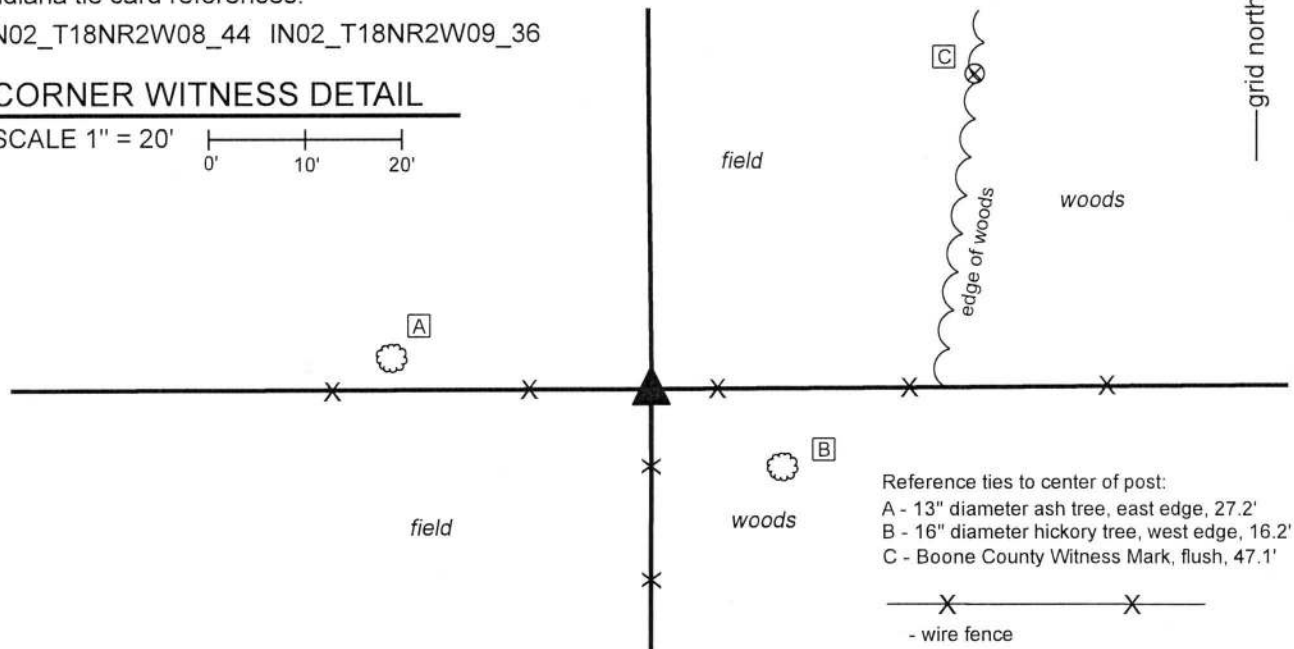
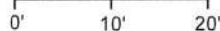
Witness Monument: 5/8" diameter rebar with metal cap stamped 'Boone County Surveyor', 3 inches above adjacent ground.

Indiana tie card references:

IN02_T18NR2W08_44 IN02_T18NR2W09_36

CORNER WITNESS DETAIL

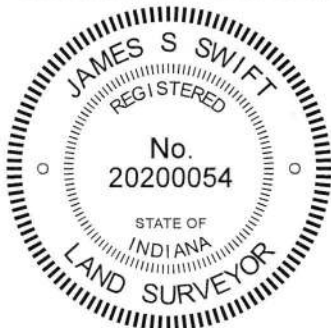
SCALE 1" = 20'



The wood corner post was found in place.

No specific descriptions of this corner were found in the BCS Surveyor's Record beyond the original establishment of the corner as a wood post in 1820. No recent BCS tie cards were found referencing the corner. A survey recorded as Instrument 9611369 in the Office of the Boone County Recorder shows the corner as a wood corner post.

Manual excavation and probing was performed around this post in September, 2018. Several rocks to the east of the post were found lying on the ground and partially embedded in the ground. None of these rocks appeared to represent stones purposely set to mark the corner. In September, 2018, it was observed that the post falls approximately 1 rod (16.5 feet) east of a straight line connecting the evidence of the section corners to the north and south. It was also observed that a line doubled from the evidence of the center of section (rebar found in the center of C.R. 1050 West) through a post approximately one-quarter mile west of the subject corner indicates a possible position for the corner approximately 1 rod west of the found post. Confirmation of the position of the corner was delayed while further evidence was sought in the form of adjoining deed descriptions and other accessory evidence such as posts to the east and south. In addition, the corners to the north and south were excavated and monumented in July and September, 2019, respectively. Reviewing additional evidence, it was observed that the position of the existing post fits well with evidence to the east, including the relative positions of the post approximately one-quarter mile east of the subject corner and evidence of the center of section 9, in the form of a rebar in the center of County Road 950 West. It was also observed that the existing post falls on the northerly prolongation of a line from the southwest corner of section 9 through a rebar found at the southwest edge of a wood corner post approximately 1/4 mile south of the subject corner. No deed references were found which call into question the position of the existing post. The post itself is 7 inches square with fence to the south, east and west, fence cut to the north, a brace to the east and a brace notch to the north. The post matches the position of the post shown as the corner on the survey recorded as Instrument 9611369. The post was accepted as the best available evidence of the corner and held as marking the corner. A witness rebar was set on the north edge of the post, 0.5 foot north of the center of the post, on October 29, 2019. The rebar is intended as a witness to the post and the center of the post is held as the specific position of the corner.

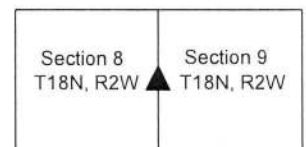


Kenneth E. Hedge
 Kenneth E. Hedge, County Surveyor

James S. Swift
 James S. Swift, IN LS 20200054

November 13, 2019

Jefferson Township



SECTION CORNER RECORD

BOONE COUNTY SURVEYOR'S OFFICE

SW 150-1100

State Plane grid coordinates NAD83 (2011):

North: 1737330.42 East: 3066695.83 (U.S. survey feet)

Type of monument: Harrison, 4" disk 'Section Corner'

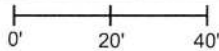
Depth: Six inches below adjacent road surface

Indiana tie card references:

IN02_T18NR2W07_44 IN02_T18NR2W08_36

CORNER WITNESS DETAIL

SCALE 1" = 40'

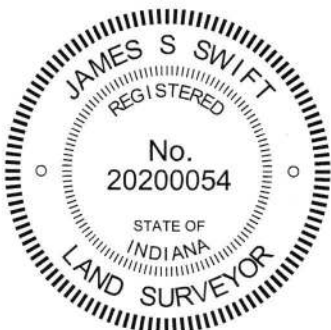
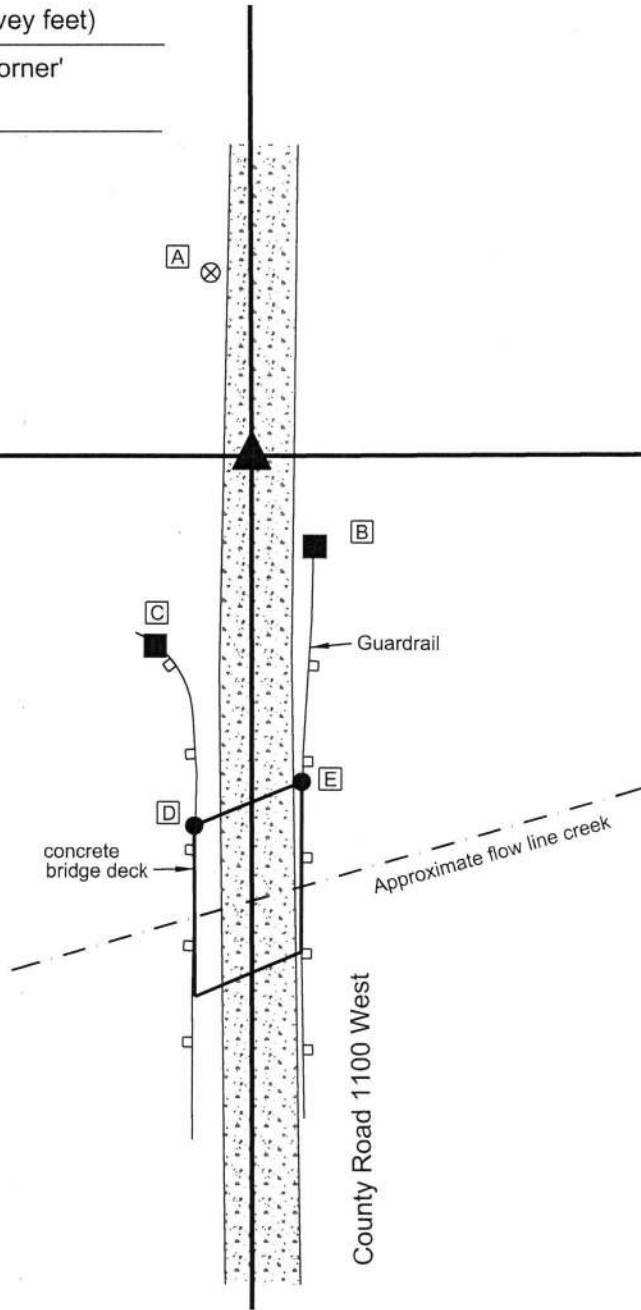


- A - Boone County witness mark, flush, 38.9'
- B - Notch in top center of guardrail post, 23.0'
- C - Notch in top center of guardrail post, 44.0'
- D - NW corner of bridge deck, 77.8'
- E - NE corner of bridge deck, 68.6'

The Harrison monument was set in place of a rebar found.

No specific descriptions of this corner were found in the BCS Surveyor's Record beyond the original establishment of the corner in 1820. A BCS tie card dated May 19, 1994 shows the corner as a rebar north of a concrete bridge.

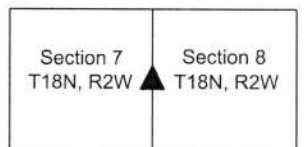
No large scale excavation was performed at this corner, as it falls in an area of substantial fill in the approach to the existing bridge over a small waterway. The rebar referenced in the 1994 tie card was found apparently undisturbed 2 inches below the surface of the gravel road. The position of the rebar fits well with the relative positions of proximate corners and falls at the easterly extension of a tree line to the west. The rebar was accepted as providing the best available evidence of the corner. It was removed and replaced with a Harrison monument in the same position on October 17, 2019.



Kenneth E. Hedge
 Kenneth E. Hedge, County Surveyor

James S. Swift
 James S. Swift, IN LS 20200054
 December 18, 2019

Jefferson Township



SECTION CORNER RECORD

SW 200-1000

BOONE COUNTY SURVEYOR'S OFFICE

State Plane grid coordinates NAD83 (2011):

North: 1734704.74 East: 3072003.61 (U.S. survey feet)

Type of monument: Harrison, 4" disk 'Section Corner'

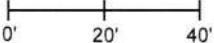
Depth: One inch below adjacent road surface

Indiana tie card references:

IN02_T18NR2W08_80 IN02_T18NR2W09_72

IN02_T18NR2W17_08 IN02_T18NR2W16_00

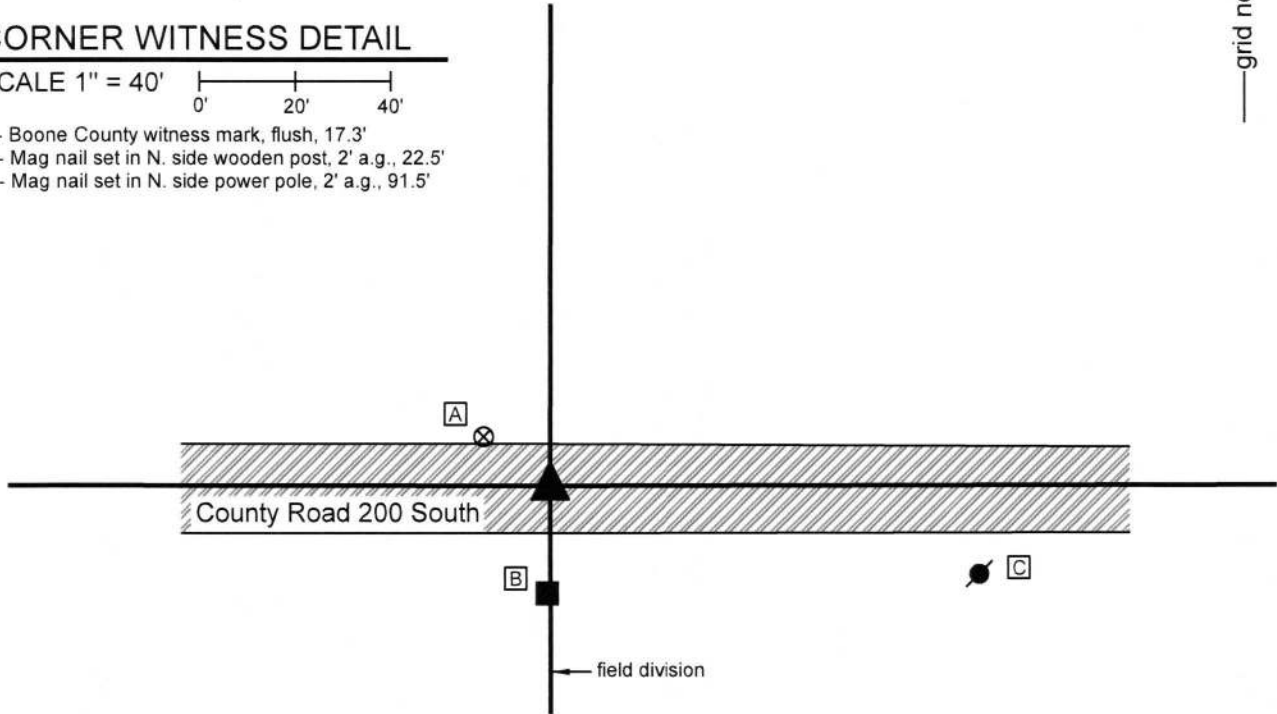
CORNER WITNESS DETAIL

SCALE 1" = 40' 

A - Boone County witness mark, flush, 17.3'

B - Mag nail set in N. side wooden post, 2' a.g., 22.5'

C - Mag nail set in N. side power pole, 2' a.g., 91.5'

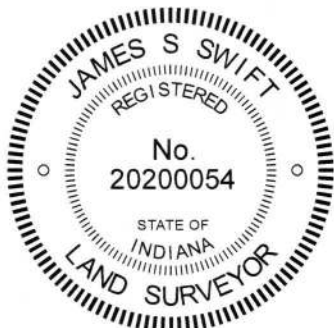


The Harrison monument was set over a stone found.

A BCS record of April 18-19, 1870 states, with respect to this corner, "Reest. Set two rocks. One 7.5 12. 4 marked +. Top rock 11.8.9 marked +." A BCS tie card dated August 23, 1967 states "no stone."


This corner was excavated on September 17, 2019. Prior to excavation, a mag nail was found at the surface of the road, slightly east of two posts on the south side of the road. Excavation revealed a vertical section of railroad rail found at 11 inches deep, directly below the nail. Further excavation revealed a stone found at 24 inches deep, west of the nail and rail. The stone appeared to be leaning toward the east, as found. As stood vertically, the stone measured 7 inches E-W by 6 inches N-S by 10 inches tall, 1 inch smaller in each dimension than what was reported in the 1870 record. No other stone was found below this stone, though fragments of a wood stake were found along the east edge of the stone. The found stone fit better with the posts on the south side of the road (one ancient, one newer) than did the rail. No explanation is offered as to why the lower stone was not found. The found stone was slightly smaller than called in the 1870 record though of the same proportions. The stone was accepted as being the best available evidence of the corner. The stone was left in place, as stood vertically, and a Harrison monument was set directly over the top, center of the stone. The nail and rail, both removed during excavation, had been 1.7 foot east and 0.7 foot south of the stone.

This corner was originally established as a wood post in 1820.




 Kenneth E. Hedge, County Surveyor

Jefferson Township


 James S. Swift, IN LS 20200054
 September 25, 2019

Jackson Township

Section 8 T18N, R2W	Section 9 T18N, R2W
Section 17 T18N, R2W	Section 16 T18N, R2W

SECTION CORNER RECORD

SW 200-1050

BOONE COUNTY SURVEYOR'S OFFICE

State Plane grid coordinates NAD83 (2011):

North: 1734707.77 East: 3069356.96 (U.S. survey feet)

Type of monument: Harrison, 4" disk 'Section Corner'

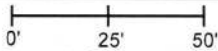
Depth: One inch below adjacent road surface

Indiana tie card references:

IN02_T18NR2W08_76 IN02_T18NR2W17_04

CORNER WITNESS DETAIL

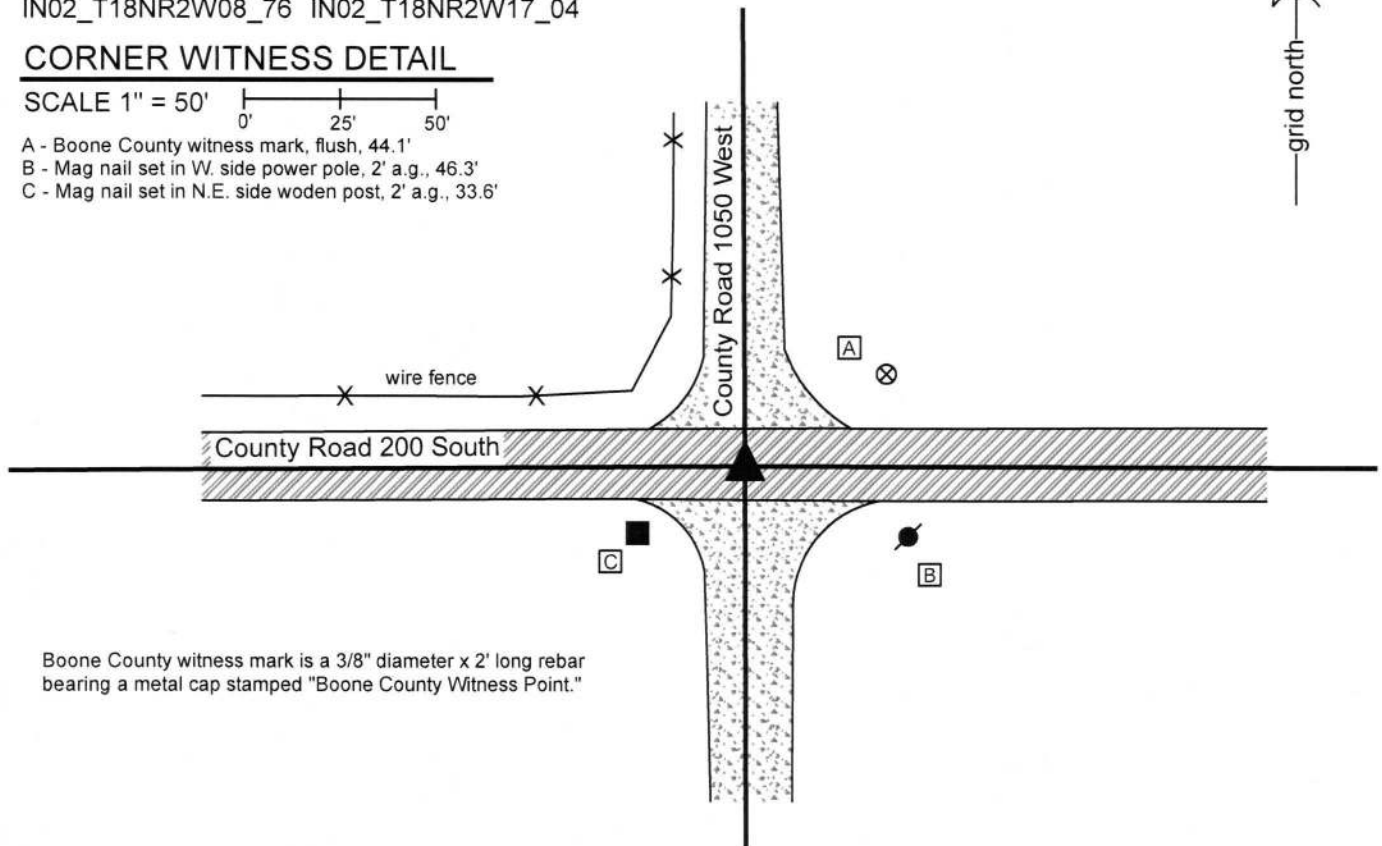
SCALE 1" = 50'



A - Boone County witness mark, flush, 44.1'

B - Mag nail set in W. side power pole, 2' a.g., 46.3'

C - Mag nail set in N.E. side woden post, 2' a.g., 33.6'



Boone County witness mark is a 3/8" diameter x 2' long rebar bearing a metal cap stamped "Boone County Witness Point."

The Harrison monument was set over a stone found.


A BCS Record of October 5-6, 1897 states, with respect to this orner, "Found rock with old stake beneath." No recent BCS tie cards were found referencing this corner.

Excavation was performed at this corner on September 18, 2019. Prior to excavation, a Mag Nail was found at the surface of the road at the intersection of the centers of the county roads in all four cardinal directions. Excavation revealed no metal monument found beneath the nail, though excavation did reveal a stone found at 20 inches deep, generally below the position of the nail. With the top four inches of the stone exposed, it measured 8 inches N-S by 9 inches E-W and was clearly larger in those dimensions and clearly of substantial size in the vertical dimension. An etched "+" mark was clearly visible on the top of the stone, slightly south of the top, high point. The stone was embedded in the clay layer below the road with the top of the stone coincident with the bottom of the road bed. The stone was held as marking the corner and a Harrison monument was set over the top, high point of the stone, slightly north of the etched "+" mark. The mag nail, removed during excavation, had been 0.4 foot north of the point held as the corner.

This corner was originally established as a wood post in 1820.




Kenneth E. Hedge, County Surveyor


James S. Swift, IN LS 20200054
September 25, 2019

Jefferson
Township

Section 8
T18N, R2W

Jackson
Township

Section 17
T18N, R2W

SECTION CORNER RECORD

SW 200-1100

BOONE COUNTY SURVEYOR'S OFFICE

State Plane grid coordinates NAD83 (2011):

North: 1734691.23 East: 3066709.26 (U.S. survey feet)

Type of monument: Harrison, 4" disk 'Section Corner'

Depth: One inch below adjacent road surface

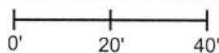
Indiana tie card references:

IN02_T18NR2W07_80 IN02_T18NR2W08_72

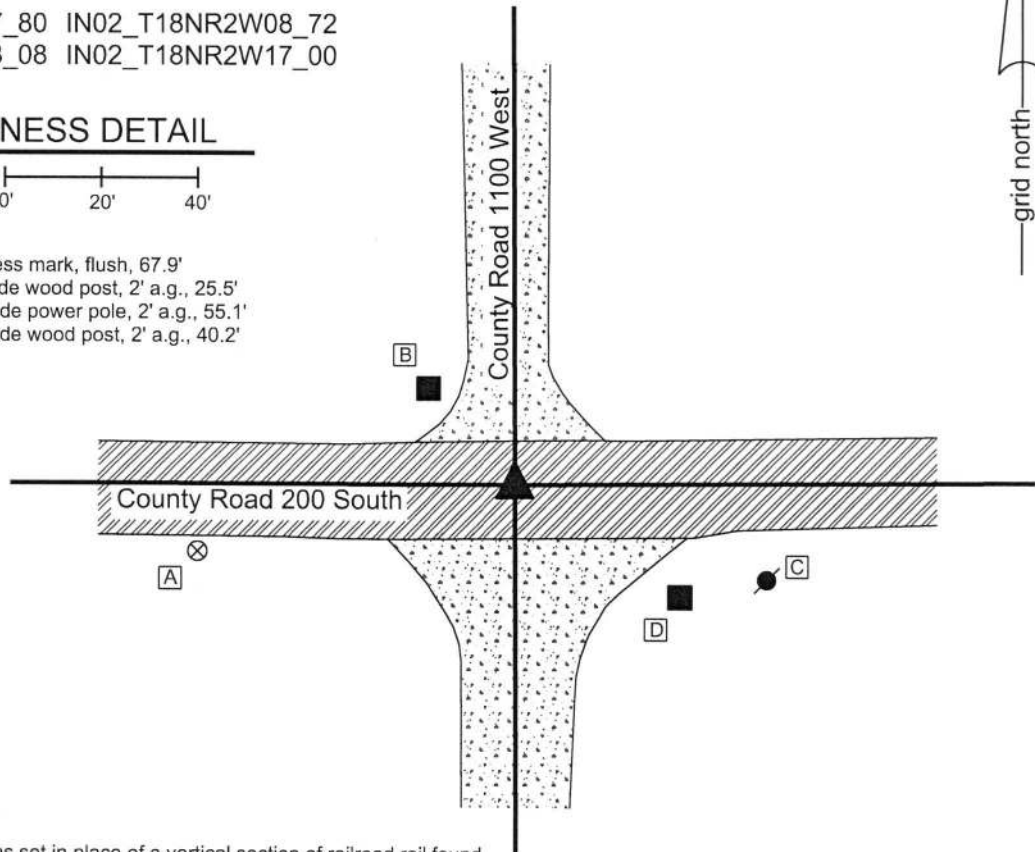
IN02_T18NR2W18_08 IN02_T18NR2W17_00

CORNER WITNESS DETAIL

SCALE 1" = 40'



- A - Boone County witness mark, flush, 67.9'
- B - Mag nail set in S. side wood post, 2' a.g., 25.5'
- C - Mag nail set in N. side power pole, 2' a.g., 55.1'
- D - Mag nail set in N. side wood post, 2' a.g., 40.2'



The Harrison Monument was set in place of a vertical section of railroad rail found.

No specific descriptions of this corner were found in the BCS Surveyor's Record beyond the original establishment of the corner as a wood post in 1820.

A BCS tie card dated August 23, 1967 shows the corner as "No stone." A BCS tie card dated May 19, 1994 shows the corner as a railroad spike. It is noted that the distance ties to corner posts in the northeast and northwest quadrants of the intersection do not match on the two tie cards.

This corner was excavated on October 9, 2018. Prior to excavation, a railroad spike was found at the surface of the road near the center of the intersection of the two roads. Prior to excavation, it appeared that the railroad spike was slightly southwest of the most probable location of the original corner, as determined by the centers of the roads in all four directions. The area of excavation was offset towards the northeast of the spike and was not centered on the spike for this reason. Excavation revealed a vertical section railroad rail found at 8 inches deep 1.4 feet north and 1.7 feet east of the railroad spike.

Further excavation of a rectangular area extending 2 feet south and 2 feet west of the railroad spike and 1.5 feet north and 1.5 feet east of the railroad rail revealed no further evidence of the corner. The bottom of the road bed was found at 10 inches deep. Excavation was performed to at least 12 inches deep. The vertical section of railroad rail is believed to have been set in association with the 1967 tie card, as it is known that setting railroad rails was the standard operating procedure of BCS field crews in the late 1960s and early 1970s. The variation in the positions of the spike and rail match the relative variations in the distance ties to the corner posts noted above. The rail was clearly in place before the spike was set and fits better with the evidence of the original corner in the form of the center of the roads. The rail was held as marking the corner. Both monuments were removed during excavation and a Harrison monument was set in the position of the rail.



Kenneth E. Hedge
Kenneth E. Hedge, County Surveyor

Jefferson
Township

Section 7 T18N, R2W	Section 8 T18N, R2W
Section 18 T18N, R2W	Section 17 T18N, R2W

James S. Swift
James S. Swift, IN LS 20200054

Jackson
Township

October 31, 2018