

# SECTION CORNER RECORD

SE 100-150

## BOONE COUNTY SURVEYOR'S OFFICE

State Plane grid coordinates NAD83 (NSRS 2007):  
North: 1740591.16 East: 3132533.95 (U.S. survey feet)

Type of monument: Harrison, 4" disk 'Section Corner'  
Depth: One inch below adjacent road surface

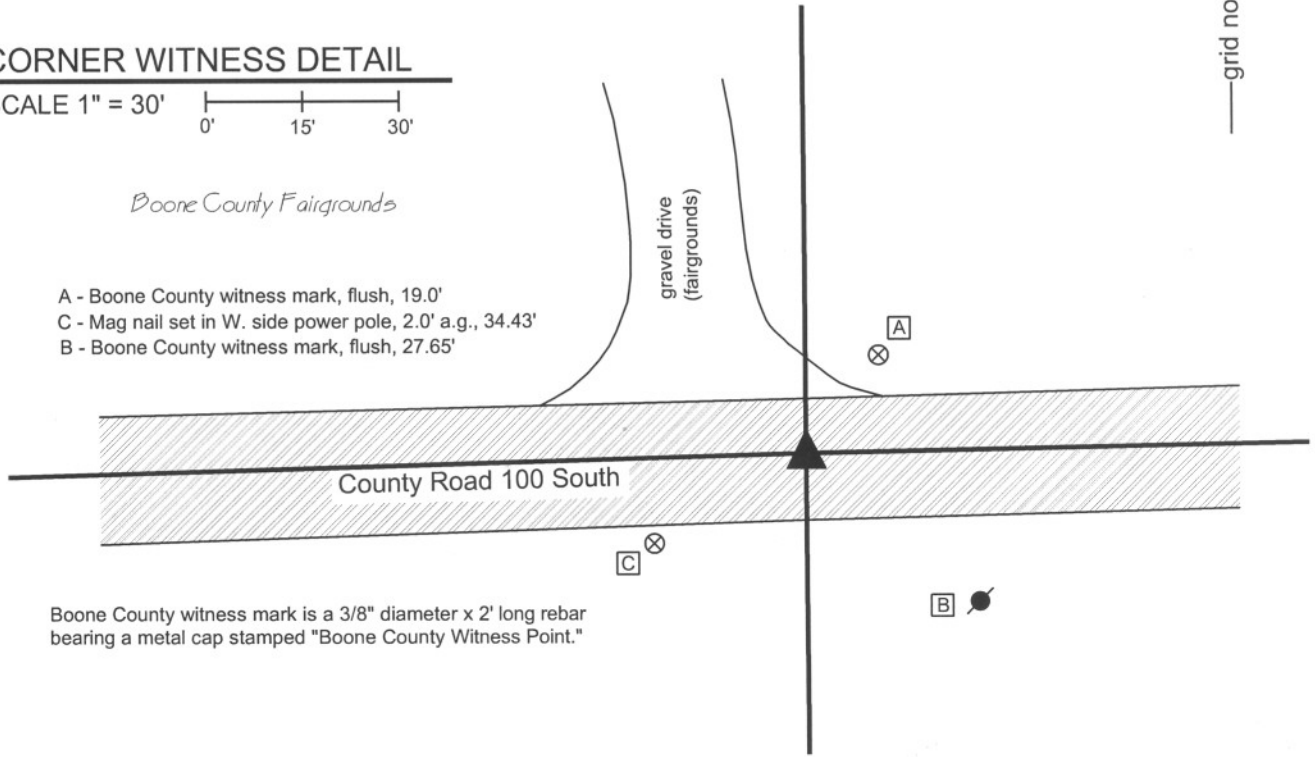
Indiana tie card references:  
IN02\_T18NR1E05\_76  
IN02\_T18NR1E08\_04

### CORNER WITNESS DETAIL

SCALE 1" = 30'  
0' 15' 30'

*Boone County Fairgrounds*

- A - Boone County witness mark, flush, 19.0'
- C - Mag nail set in W. side power pole, 2.0' a.g., 34.43'
- B - Boone County witness mark, flush, 27.65'



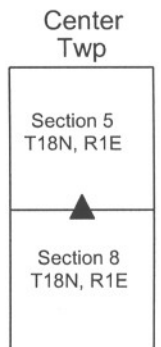
Boone County witness mark is a 3/8" diameter x 2' long rebar bearing a metal cap stamped "Boone County Witness Point."

The harrison monument was set in place of a harrison monument found and a partial steel fence post found. A BCS tie card dated April 29, 1992 shows the corner as a cut-off steel fence post found. This corner is mentioned several times in the BCS Surveyor's Record but no description of a monument was found in the record. This corner was excavated on October 22, 2009. Prior to excavation a harrison monument was visible at the surface of the road. No documentation was found for this monument. The harrison monument was removed and a broken-off steel fence post of the type commonly referred to as a t-post was found at 18 inches deep. The steel post was found to be 3 feet long and was approximately below the harrison monument. The top of the post was at the depth of the bottom of the road and top of the underlying layer of clay. An area extending 4.5 feet West and 2.5 feet North, South and East was excavated to at least 4 inches into the clay layer below the road. No other evidence of the corner was found. A new harrison monument was set at the position of the found steel fence post. This corner was originally established as a wood post in June, 1820.



*Kenneth E. Hedge*  
Kenneth E. Hedge, County Surveyor

*James S. Swift*  
James S. Swift, IN LS 20200054  
July 14, 2010



# SECTION CORNER RECORD

SE 100-200

## BOONE COUNTY SURVEYOR'S OFFICE

State Plane grid coordinates NAD83 (NSRS 2007):

North: 1740642.23 East: 3135205.97 (U.S. survey feet)

Type of monument: Harrison, 4" disk 'Section Corner'

Depth: One inch below adjacent road surface

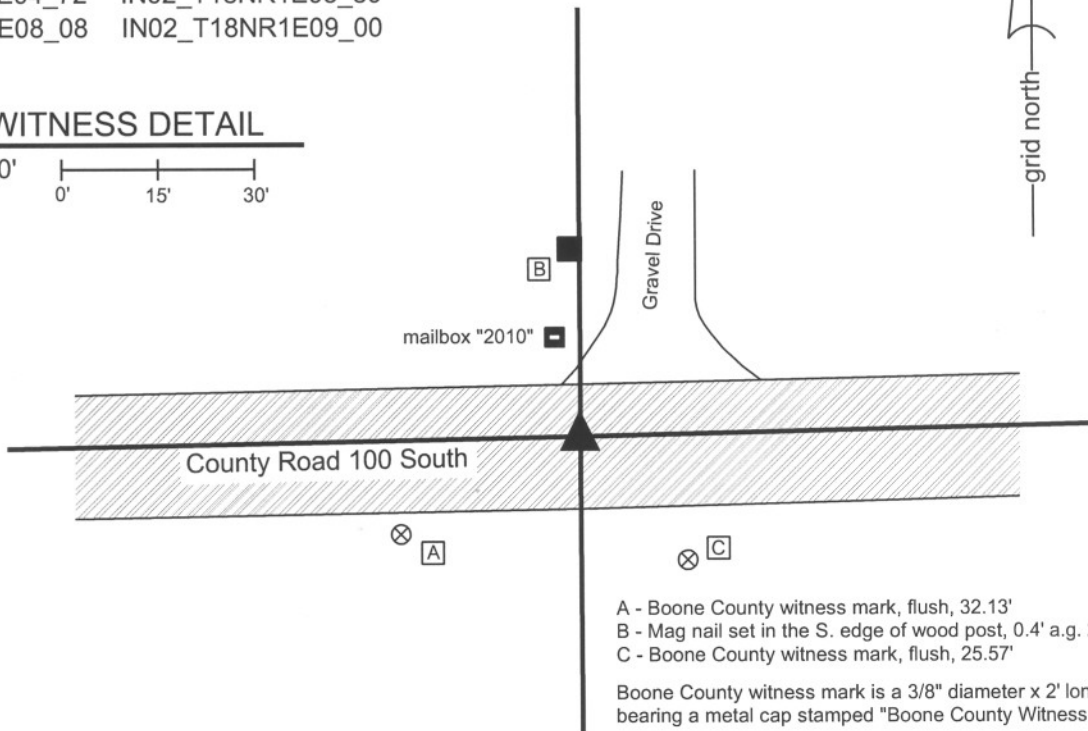
Indiana tie card references:

IN02\_T18NR1E04\_72 IN02\_T18NR1E05\_80

IN02\_T18NR1E08\_08 IN02\_T18NR1E09\_00

### CORNER WITNESS DETAIL

SCALE 1" = 30'



- A - Boone County witness mark, flush, 32.13'
- B - Mag nail set in the S. edge of wood post, 0.4' a.g. 27.38'
- C - Boone County witness mark, flush, 25.57'

Boone County witness mark is a 3/8" diameter x 2' long rebar bearing a metal cap stamped "Boone County Witness Point."

The harrison monument was set over a stone found.

A BCS record of February 9, 1887 states "Re-est. by measure from H-H sec. 9. Set Rock 4,14,19 +" A BCS tie card dated August 16, 1967 shows the corner but makes no mention of a monument. A BCS reference sheet dated July 8, 1989 discusses uncertainties associated with a PK nail found in the vicinity of the corner. A BCS tie card dated June 20, 1991 shows the corner as a railroad rail found. A BCS tie card dated October 21, 2005 shows the corner as a harrison monument with no documentation of source.

This corner was excavated on October 19, 2009. Prior to excavation, a harrison monument was visible at the surface of the road. Excavation revealed a steel railroad rail found on end at 12 inches deep. A rebar was also found on the southwest side of the railroad rail. The harrison monument had been over the rebar. Both the rebar and the rail were removed. A stone was found at 18 inches deep, 1.6 feet North and 2.6 feet East of the position of the harrison monument. The stone is completely embedded in the clay layer below the road bed, with the top of the stone at the top of the clay layer. The stone is 14 inches tall and is not oriented with the cardinal directions. The top of the stone measures 12 inches in the NE-SW dimension and a spur at the bottom of the stone on the southwest side protrudes 2 inches for a total 14 inches. The top of the stone measures 6 inches wide in the NW-SE dimension and a spur on the southeast side protrudes for 3 inches for a total of 9 inches. No visible marks were found. The written record states that the stone is 4,14,9. The stone found measures 14,14,9. The found stone also fits well with the local evidence in the E-W dimension in the form of an old post on the north side of the road. The harrison, railroad rail and rebar were all west of this post. The stone was accepted as the corner and a harrison monument was set over the top center of the main ridge of the stone.

This corner was originally established as a wood post in June, 1820.



*Kenneth E. Hedge*  
 Kenneth E. Hedge, County Surveyor

*James S. Swift*  
 James S. Swift, IN LS 20200054  
 July 14, 2010

Center Township

Section 5 T18N, R1E	Section 4 T18N, R1E
Section 8 T18N, R1E	Section 9 T18N, R1E

PHOTOGRAPHIC DOCUMENTATION

Date of photography: October 19, 2009

View of the stone as first exposed.



View of the stone more fully exposed.  
View from the west.



View from the south, looking across the stone (hidden behind the corner of pavement), and north to the old post on the north side of the road.



Similar view to above. View from the southwest.



Close-up of the stone as found and exposed.



For details and documentation, refer to related sheet "Section Corner Record."

# SECTION CORNER RECORD

## BOONE COUNTY SURVEYOR'S OFFICE

SE 150-100

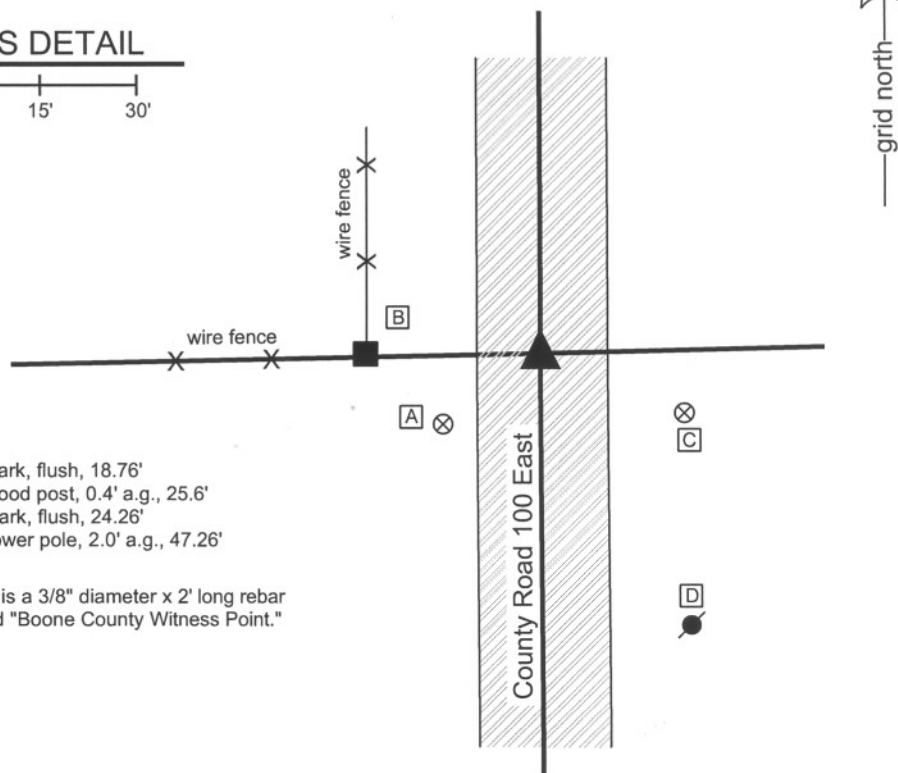
State Plane grid coordinates NAD83 (NSRS 2007):  
 North: 1737853.10 East: 3129879.78 (U.S. survey feet)

Type of monument: Harrison, 4" disk 'Section Corner'  
 Depth: One inch below adjacent road surface

Indiana tie card references:  
 IN02\_T18NR1E07\_44  
 IN02\_T18NR1E08\_36

### CORNER WITNESS DETAIL

SCALE 1" = 30'



- A - Boone County witness mark, flush, 18.76'
- B - Mag nail set in E. side, wood post, 0.4' a.g., 25.6'
- C - Boone County witness mark, flush, 24.26'
- D - Mag nail set in N. side power pole, 2.0' a.g., 47.26'

Boone County witness mark is a 3/8" diameter x 2' long rebar bearing a metal cap stamped "Boone County Witness Point."

The harrison monument was set over a stone found.  
 A BCS record of June 13, 20, 21, 1881 states "Set Rock 12,10,10 marked +." A BCS tie card dated April 29, 1992 shows the corner as a railroad spike found. This corner was excavated on July 21, 2009. Prior to excavation a railroad spike was found 6 inches below grade, matching references on the 1992 tie card. Excavation revealed a stone found at 15 inches deep. This stone was of a soft material and was found to be entirely within the gravel portion of the road bed and generally unstable. The stone was removed. The record stone was found directly below at 18 inches deep. With 8 inches of the stone exposed, it measured 10 inches N-S by 10 inches E-W. The stone is fully embedded in the clay layer below the road bed and a vague etched "+" is visible on the top towards the south edge of the stone. The harrison monument was set directly over the etched "+". The railroad spike, removed during excavation, was 0.4 foot north and 0.4 foot west of this point.  
 This corner was originally established as a wood post in June, 1820.



*Kenneth E. Hedge*  
 Kenneth E. Hedge, County Surveyor

*James S. Swift*  
 James S. Swift, IN LS 20200054  
 July 14, 2010

Center Township

Section 7 T18N, R1E	Section 8 T18N, R1E
------------------------	------------------------

PHOTOGRAPHIC DOCUMENTATION

Date of photography: July 21, 2009

The top stone, found in the fill material.



The lower stone, described in the 1881 record.  
View from above and west.



The lower stone. View from the above and north.



The lower stone, washed. The etched mark is  
visible as a dark area on the top of the rock.



For details and documentation, refer to  
related sheet "Section Corner Record."

# SECTION CORNER RECORD

# SE 200-100

## BOONE COUNTY SURVEYOR'S OFFICE

State Plane grid coordinates NAD83 (NSRS 2007):  
North: 1735188.75 East: 3129897.92 (U.S. survey feet)

Type of monument: Harrison, 4" disk 'Section Corner'  
Depth: One inch below adjacent road surface

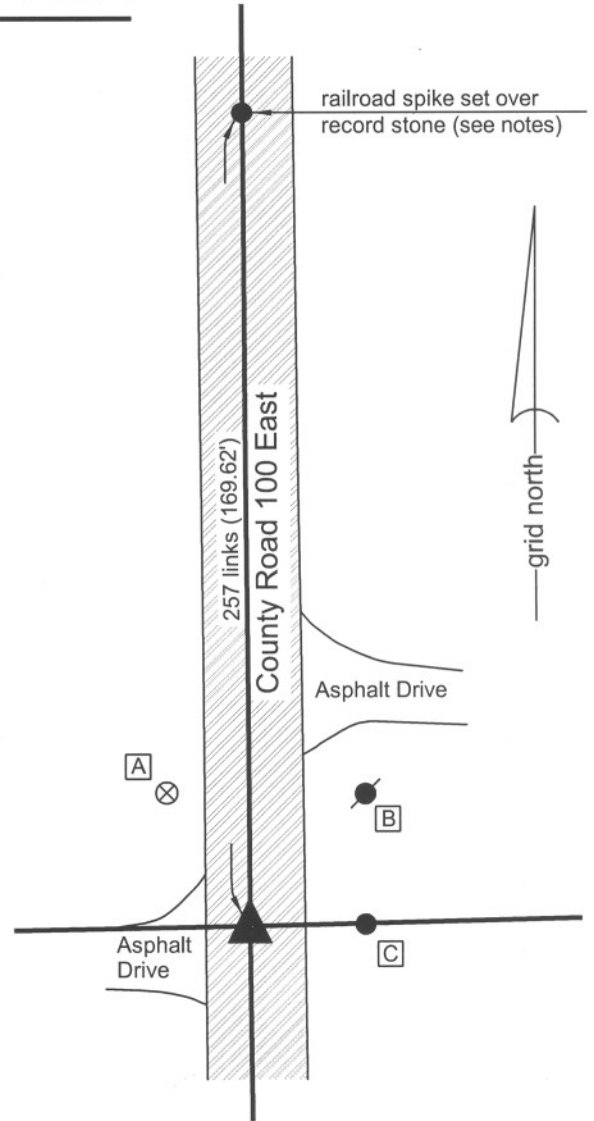
Indiana tie card references:  
IN02\_T18NR1E07\_80 IN02\_T18NR1E08\_72  
IN02\_T18NR1E17\_00 IN02\_T18NR1E18\_08

### CORNER WITNESS DETAIL

SCALE 1" = 40'  
0' 20' 40'

- A - Boone County witness mark, flush, 32.64'
- B - Mag nail set in S. side power pole, 2.0' a.g., 35.0'
- C - 5/8" capped rebar found (Carter), flush, 23.96'

Boone County witness mark is a 3/8" diameter x 2' long rebar bearing a metal cap stamped "Boone County Witness Point."



The harrison monument was set in a position calculated upon the relative positions of two stones to the north. This corner is not specifically described in the BCS "Surveyor's Record." However, sufficient information exists in the record to reconstruct the position of the corner relative to two stones found. A BCS record of February 12 mentions an intermediate corner (corner 4 of section 8) north of the subject corner. This corner is also referenced as a terminal point for measurements in a BCS record of March 13, 1871. A BCS record of June 13, 20, 21, 1881 describes the stone set at the quarter corner one-half mile to the north (corner H of section 8.) and records measurements from said corner (H) to the aforementioned intermediate corner (4) and to the subject corner (corner G of section 8.) It also records a measurement from the intermediate corner (4) to the subject corner (G). The record stone at corner H was found and a stone was found at corner 4. No stone was found at the subject corner (G). The distance between corners H and 4 match the distance recorded in 1881 of 37.80 chains to within one tenth of a foot. The position of the subject corner was established at the prolongation of the line between the stones at corners H and 4 at the record distance of 2.57 chains (169.62 feet) from corner 4. Excavation at this position revealed no further evidence. The harrison monument was set at the calculated position for the corner. This corner was originally established as a wood post in July, 1821.



*Kenneth E. Hedge*  
Kenneth E. Hedge, County Surveyor

*James S. Swift*  
James S. Swift, IN LS 20200054  
July 14, 2010

Center Township

Section 7 T18N, R1E	Section 8 T18N, R1E
Section 18 T18N, R1E	Section 17 T18N, R1E

# SECTION CORNER RECORD

## BOONE COUNTY SURVEYOR'S OFFICE

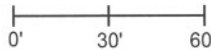
SE 200-150

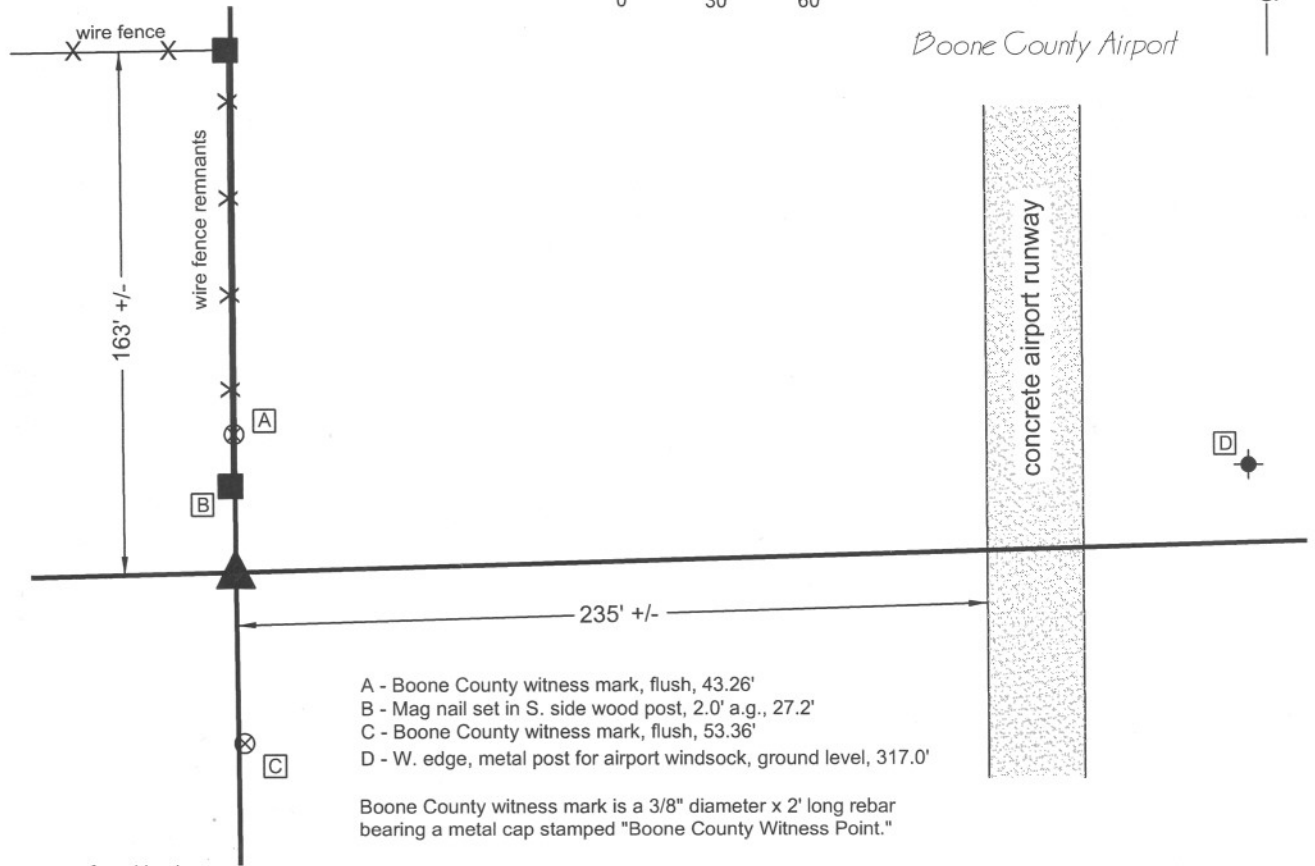
State Plane grid coordinates NAD83 (NSRS 2007):  
 North: 1735252.07 East: 3132567.46 (U.S. survey feet)

Type of monument: Stone visible within 12" vertical storm pipe  
 Depth: approximately one inch below adjacent ground

Indiana tie card references:  
 IN02\_T18NR1E08\_76  
 IN02\_T18NR1E17\_04

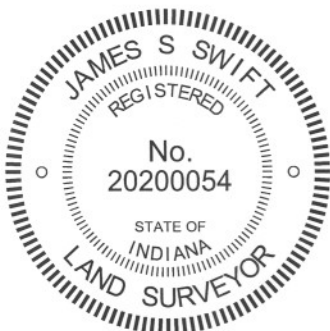
### CORNER WITNESS DETAIL

SCALE 1" = 60' 



The stone was found in place.

A BCS record of December 5-6, 1865 states "Reestablished from trees. Set Rock 22,17,5- 1/2 + on side." No recent BCS tie cards were found referencing this corner. This corner was excavated on July 20, 2009. Prior to excavation a 5/8 inch rebar bearing a plastic cap stamped "Henry Aldridge" was found flush with the ground. Excavation revealed the record stone at approximately 2 inches below grade, 2.6 feet south of the rebar. With 12 inches exposed, the stone measures 16 inches N-S by 5 inches E-W. The etched "+" is clearly visible of the East side, towards the north edge of the stone, directly below the high point of the top of the stone. An 18 inch long section of 12 inch diameter HDPE smooth core storm pipe was set around the stone. The high point, above the etched "+" was held as the specific position for the corner. The rebar was left in place. This corner was originally established as a wood post in June, 1820.



*Kenneth E. Hedge*  
 Kenneth E. Hedge, County Surveyor

*James S. Swift*  
 James S. Swift, IN LS 20200054  
 July 14, 2010, Revised April 30, 2012

Center Township

Section 8  
T18N, R1E

▲

Section 17  
T18N, R1E

PHOTOGRAPHIC DOCUMENTATION

Date of photography: July 20, 2009

The stone as found under the wire of the remnant north-south fence.



The top of the stone exposed, showing the etched mark on the east side.



The stone with the vertical section of plastic storm pipe set around it.



View from the north, showing the stone, rebar and a remaining post of the north-south fence.



For details and documentation, refer to related sheet "Section Corner Record."