

# SECTION CORNER RECORD

SE 700-700

## BOONE COUNTY SURVEYOR'S OFFICE

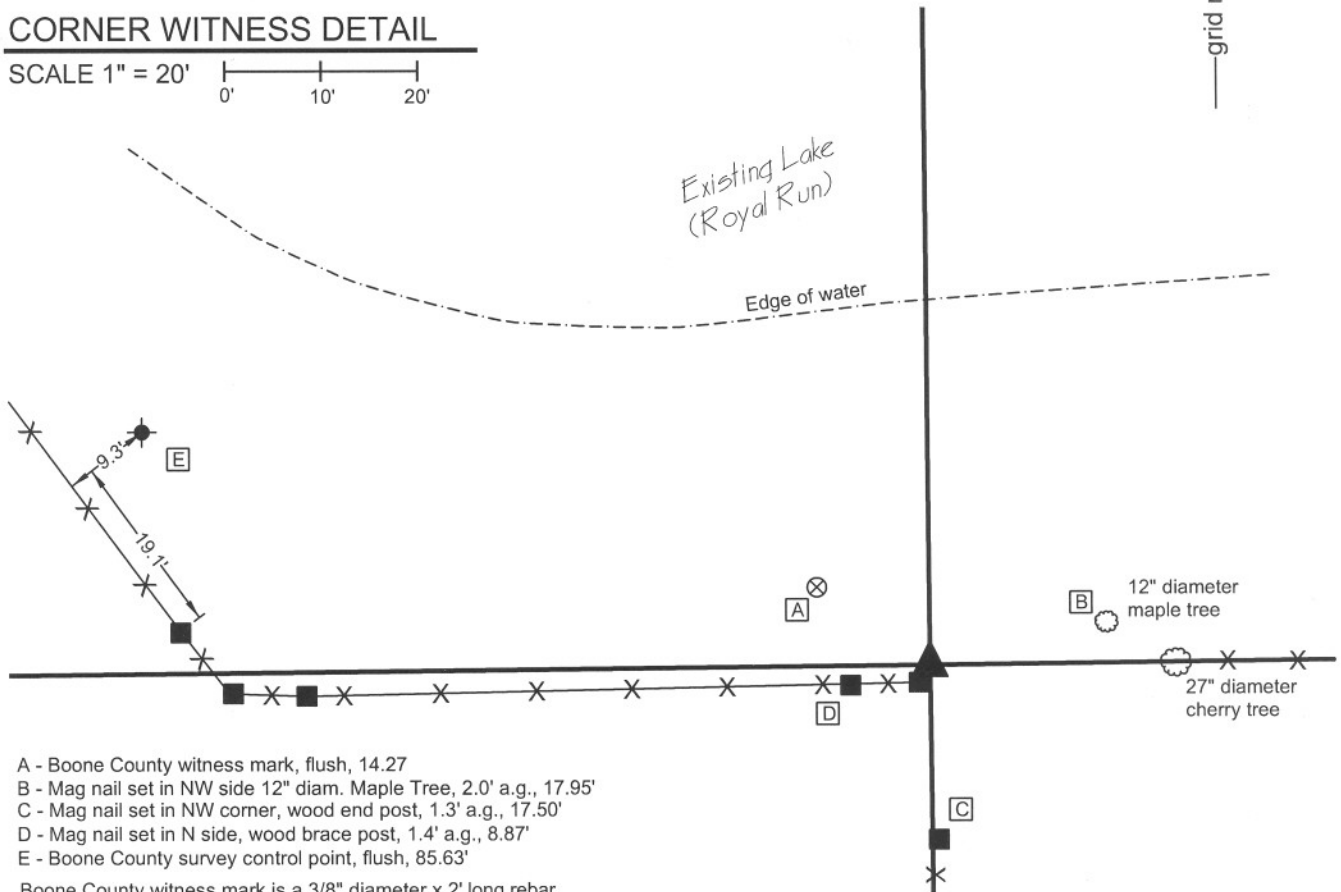
State Plane grid coordinates NAD83 (NSRS 2007):  
 North: 1709226.0 East: 3162425.3 (U.S. survey feet)

Type of monument: Stone, (7" x 4" top dimensions)  
 Depth: top at 0.2' above grade

Indiana tie card references:  
 IN02\_T17NR2E05\_72 IN02\_T17NR2E06\_80  
 IN02\_T17NR2E07\_08 IN02\_T17NR2E08\_00

### CORNER WITNESS DETAIL

SCALE 1" = 20'

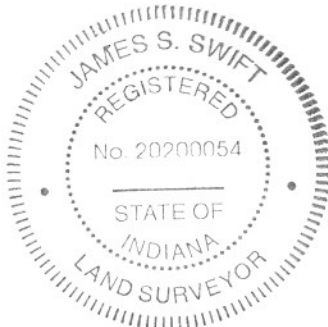


- A - Boone County witness mark, flush, 14.27
- B - Mag nail set in NW side 12" diam. Maple Tree, 2.0' a.g., 17.95'
- C - Mag nail set in NW corner, wood end post, 1.3' a.g., 17.50'
- D - Mag nail set in N side, wood brace post, 1.4' a.g., 8.87'
- E - Boone County survey control point, flush, 85.63'

Boone County witness mark is a 3/8" diameter x 2' long rebar bearing a metal cap stamped "Boone County Witness Point."

Survey control mark is a 3/8" diameter x 2' long rebar bearing a red plastic cap stamped "Control Point."

The stone found measures approximately 7 inches by 4 inches at the top with no particular markings. This stone is referenced on a tie card dated September 4, 1976 and has been held for numerous surveys in this vicinity. A BCS record dated November 24, 1865 references the corner as "a stone that was set" indicating that the stone had been established prior to this date, but does not contain a description of the stone. The point held as the corner is the approximate midpoint of the top of the stone. This corner was originally established in July, 1821.



*Kenneth E. Hedge*  
 Kenneth E. Hedge, County Surveyor

*J. S. Swift*  
 James S. Swift, IN LS 20200054  
 December 21, 2007

Eagle Township

Section 6 T17N, R2E	Section 5 T17N, R2E
Section 7 T17N, R2E	Section 8 T17N, R2E

PHOTOGRAPHIC DOCUMENTATION

Date of photography: 10/05/2007

Photograph of existing stone. The top of the stone is 7 inches by 4 inches and protrudes approximately 3 inches above the surface of the ground.



Photograph of stone and two corner posts in immediate proximity. Another corner post, being the terminus of an old north-south fence is 17.5 feet south of stone.



# SECTION CORNER RECORD

SE 700-750

## BOONE COUNTY SURVEYOR'S OFFICE

State Plane grid coordinates NAD83 (NSRS 2007):

North: 1709257.30 East: 3165071.00 (U.S. survey feet)

Type of monument: Harrison, 4" disk 'Section Corner'

Depth: 2" below grade in gravel drive

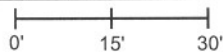
Indiana tie card references:

IN02\_T17NR2E05\_76

IN02\_T17NR2E08\_04

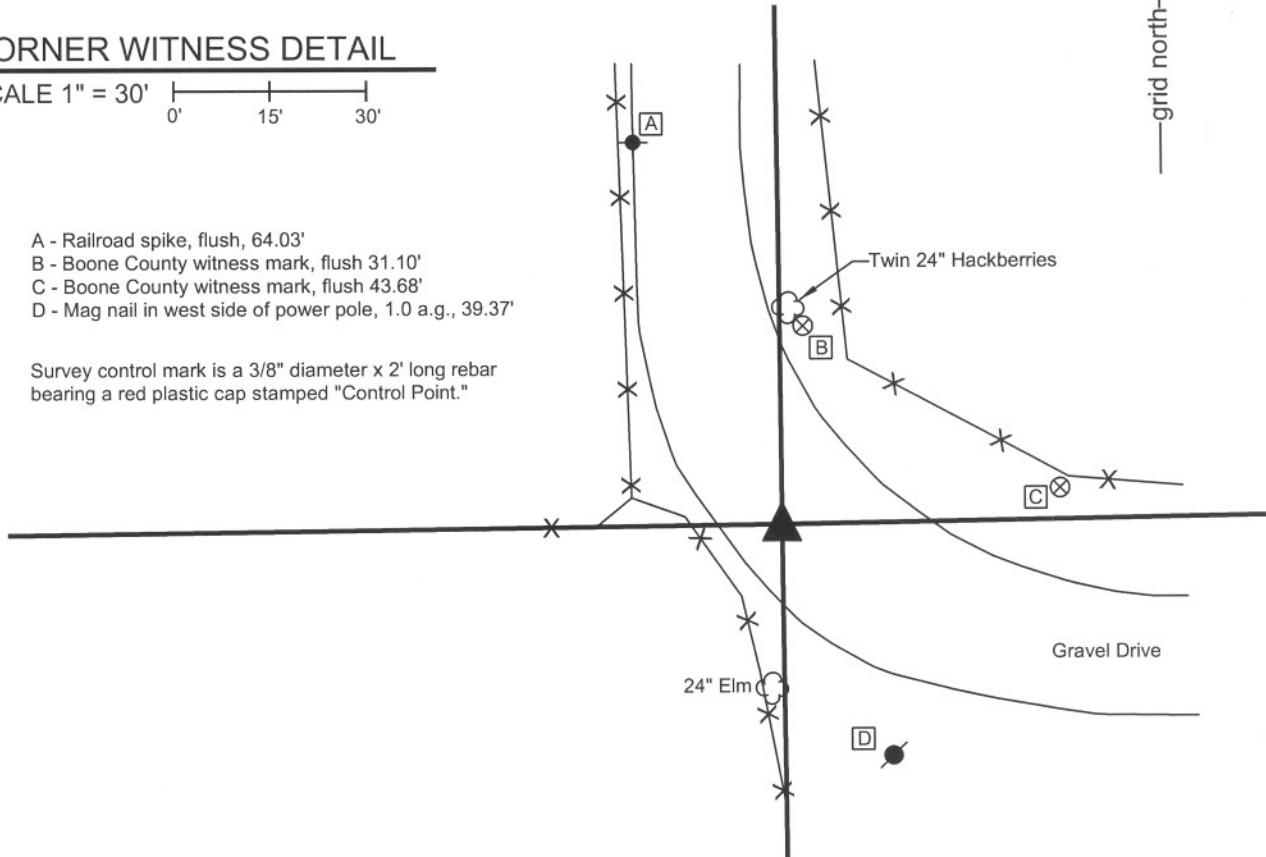
### CORNER WITNESS DETAIL

SCALE 1" = 30'



- A - Railroad spike, flush, 64.03'
- B - Boone County witness mark, flush 31.10'
- C - Boone County witness mark, flush 43.68'
- D - Mag nail in west side of power pole, 1.0 a.g., 39.37'

Survey control mark is a 3/8" diameter x 2' long rebar bearing a red plastic cap stamped "Control Point."



The Harrison monument was set in place of a 5/8 inch rebar found and accepted as marking the corner. A previous Boone County Surveyor record dated April 5, 1853 states that a stone marked "1/4 S. 5" was set at this corner. The same stone was found in November, 1864. An undated tie card, likely from 1976, calls for a railroad rail at the corner. Neither the stone nor the rail were found. The corner falls within a gravel driveway and it is apparent that sufficient earthwork has occurred in this area to remove previously existing monuments. This corner was originally established in July, 1819.



*Kenneth E. Hedge*  
Kenneth E. Hedge, County Surveyor

*J. S. Swift*  
James S. Swift, IN LS 20200054  
December 21, 2007

Eagle Township

Section 5 T17N, R2E
▲
Section 8 T17N, R2E

# SECTION CORNER RECORD

SE 700-800

## BOONE COUNTY SURVEYOR'S OFFICE

State Plane grid coordinates NAD83 (NSRS 2007):  
 North: 1709301.80 East: 3167716.65 (U.S. survey feet)

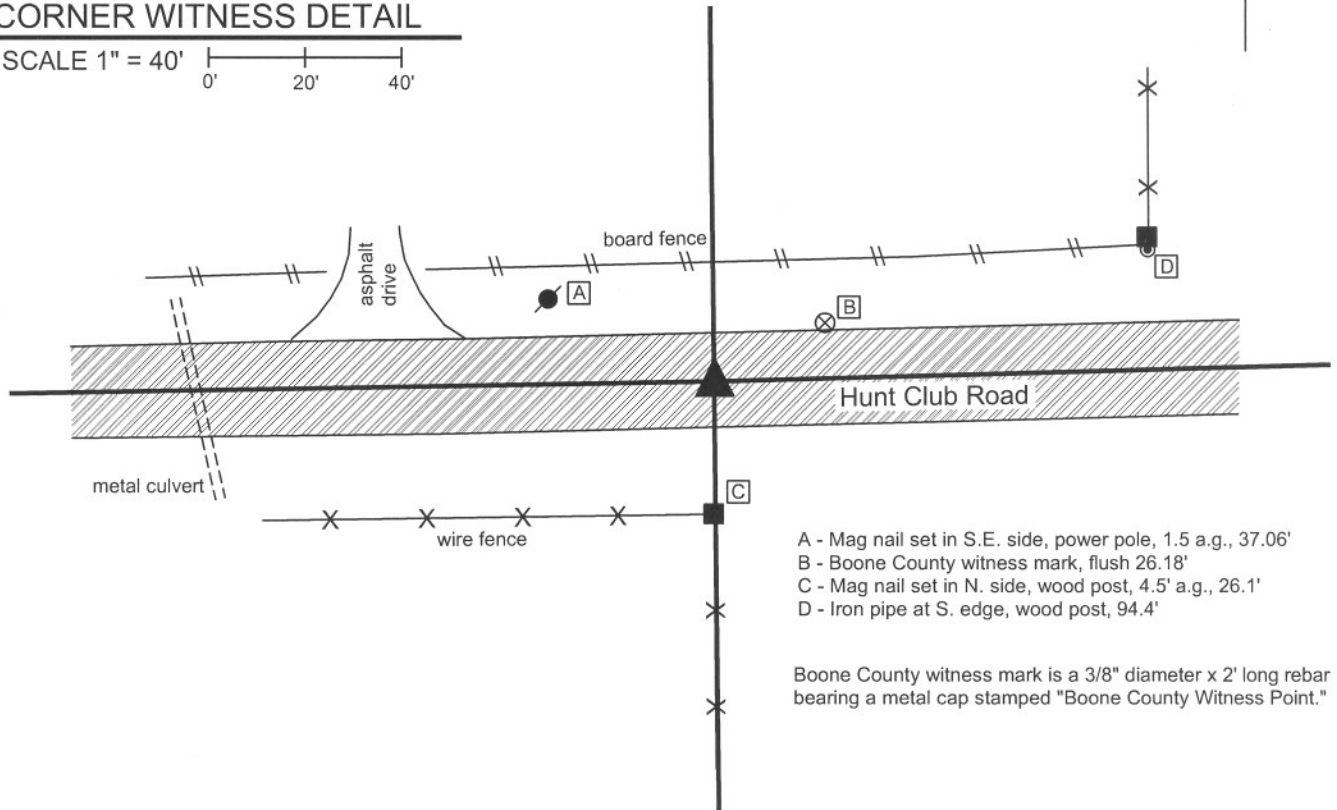
Type of monument: Harrison, 4" disk 'Section Corner'  
 Depth: Flush with road surface

Indiana tie card references:  
 IN02\_T17NR2E04\_72 IN02\_T17NR2E05\_80  
 IN02\_T17NR2E08\_08 IN02\_T17NR2E09\_00



### CORNER WITNESS DETAIL

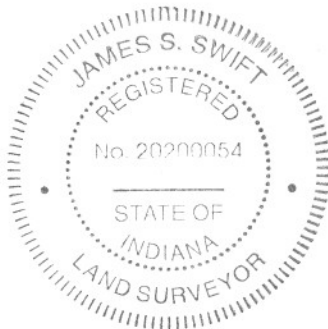
SCALE 1" = 40'  
 0' 20' 40'



- A - Mag nail set in S.E. side, power pole, 1.5 a.g., 37.06'
- B - Boone County witness mark, flush 26.18'
- C - Mag nail set in N. side, wood post, 4.5' a.g., 26.1'
- D - Iron pipe at S. edge, wood post, 94.4'

Boone County witness mark is a 3/8" diameter x 2' long rebar bearing a metal cap stamped "Boone County Witness Point."

The Harrison monument was set directly over a railroad rail found on end, the top of which is 13 inches below the surface of the road. The railroad rail is shown as being set in April, 1970. A P.K. nail was found above the rail and was removed in the process of setting the Harrison monument. No reference to a stone was found in the county records. This is an area of substantial fill for the roadway and significant excavation was not performed at this site. This corner was originally established in July, 1821.



*Kenneth E. Hedge*  
 Kenneth E. Hedge, County Surveyor

*J. S. Swift*  
 James S. Swift, IN LS 20200054  
 December 21, 2007

Eagle Township

Section 5 T17N, R2E	Section 4 T17N, R2E
Section 8 T17N, R2E	Section 9 T17N, R2E

# SECTION CORNER RECORD

# SE 750-700

## BOONE COUNTY SURVEYOR'S OFFICE

State Plane grid coordinates NAD83 (NSRS 2007):

North: 1706586.53 East: 3162438.53 (U.S. survey feet)

Type of monument: 5/8 inch rebar with metal cap stamped 'Boone County Surveyor'

Depth: flush with adjacent ground.

Indiana tie card references:

IN02\_T17NR2E07\_44

IN02\_T17NR2E08\_36

### CORNER WITNESS DETAIL

SCALE 1" = 60'



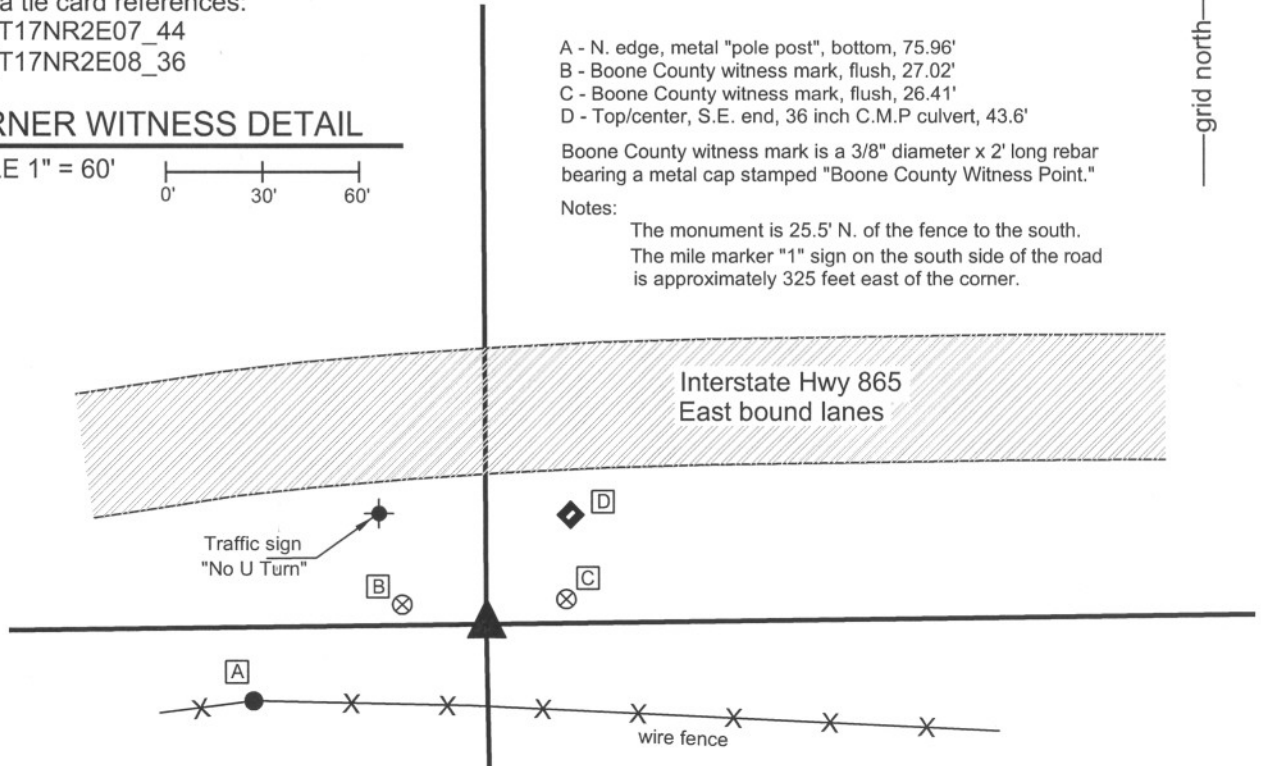
- A - N. edge, metal "pole post", bottom, 75.96'
- B - Boone County witness mark, flush, 27.02'
- C - Boone County witness mark, flush, 26.41'
- D - Top/center, S.E. end, 36 inch C.M.P culvert, 43.6'

Boone County witness mark is a 3/8" diameter x 2' long rebar bearing a metal cap stamped "Boone County Witness Point."

Notes:

The monument is 25.5' N. of the fence to the south.

The mile marker "1" sign on the south side of the road is approximately 325 feet east of the corner.



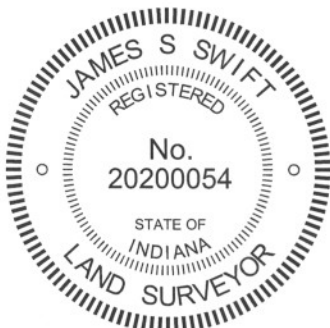
The rebar was set at a calculated position as shown on the plans for I-465, now called I-865.

This corner is shown as the terminal points for measurements in BCS records dated 1837. No specific descriptions of the corner are found in this or subsequent records. No recent tie cards were found referencing the corner.

The corner is shown on the plans for Interstate I-465 (now called I-865), Indiana State Highway Commission project I-465-4 (124) 135, fiscal year 1965, approved by the Chief Engineer of the Indiana State Highway Commission on January 7, 1966. The corner is shown as being at station 138+81, 115' right "Approx. 1/4 Sec. Cor. no stone found." It is not known why this specific location was held, as evidence of a post or fence is not shown on the plans and what evidence may have existed when the plans were made is no longer present due to the removal of evidence, if any, by the construction of the adjoining roadway and associated earthwork. However, the position of the corner fits well with fence evidence to the south and no better evidence of the corner has been found. Hence the position of the corner as shown on the plans was held. The corner was established by holding centerline control shown on the plans. The type C monument found at station 127+05.7, which represents the beginning of the project and which is also the point where the extended design center of I-865 intersects the center of Interstate I-65, was held fixed. The centerline was oriented towards a type C monument found at Station 194+91.5, (P.I.). Both of these monuments are believed to date from the original construction of the highway.

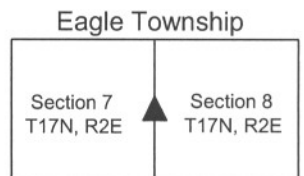
Numerous other centerline control monuments were found and checked. Variations of approximately 1 foot in all directions may be attributed to the relative positions of the found monumentation and stationing shown on the plans. A 5/8 inch diameter rebar, 36 inches long with a metal cap stamped 'Boone County Surveyor' was set flush with the existing ground at the position computed from the plans.

This corner was originally established as a wood post in 1821.



*Kenneth E. Hedge*  
 Kenneth E. Hedge, County Surveyor

*James S. Swift*  
 James S. Swift, IN LS 20200054  
 July 25, 2011



# SECTION CORNER RECORD

# SE 750-800

## BOONE COUNTY SURVEYOR'S OFFICE

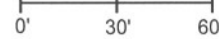
State Plane grid coordinates NAD83 (NSRS 2007):  
North: 1706646.10 East: 3167747.89 (U.S. survey feet)

Type of monument: 5/8 inch diameter rebar with no cap.  
Depth: 3 inches above adjoining grade.

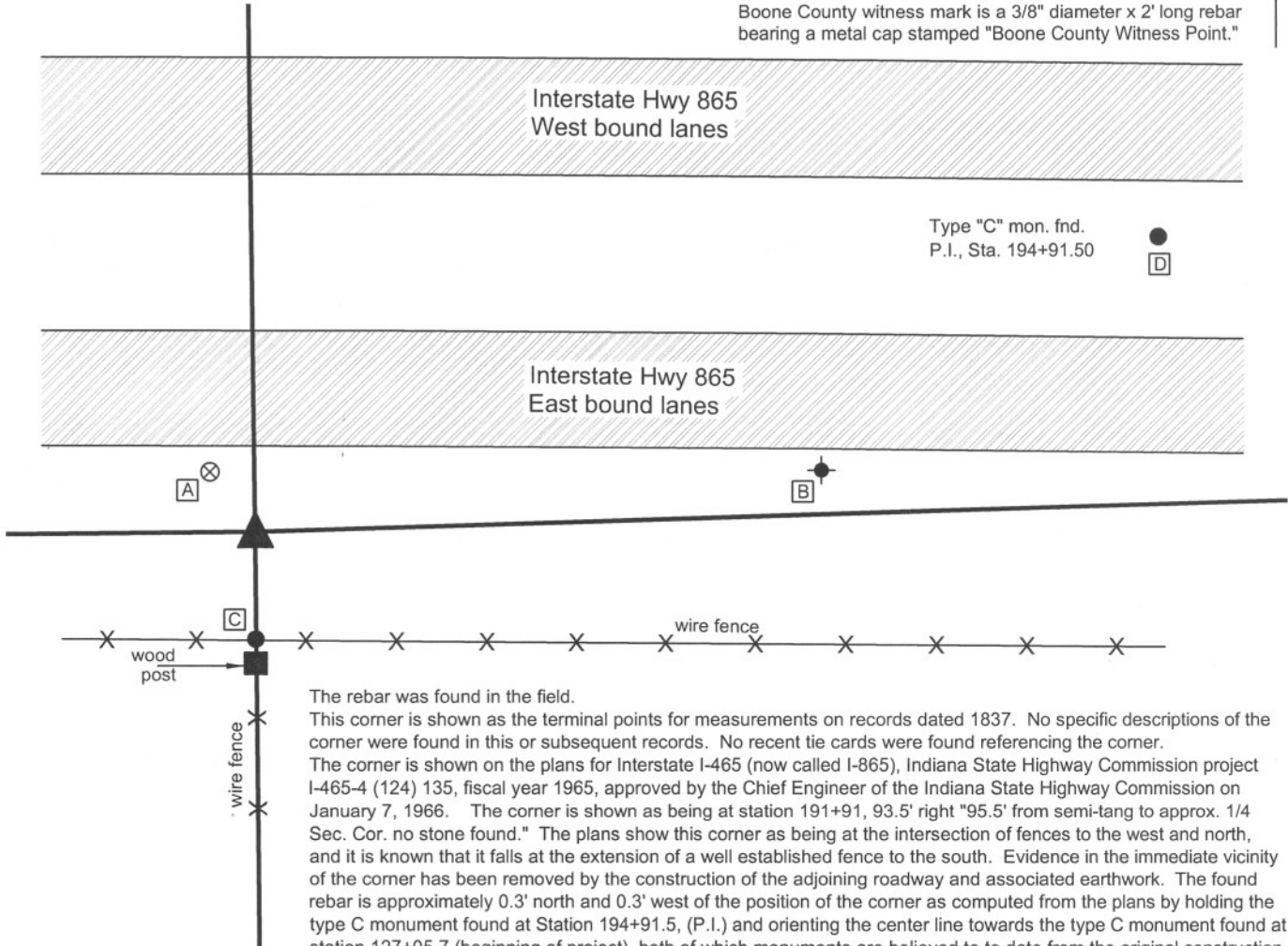
Indiana tie card references:  
IN02\_T17NR2E08\_44  
IN02\_T17NR2E09\_36

### CORNER WITNESS DETAIL

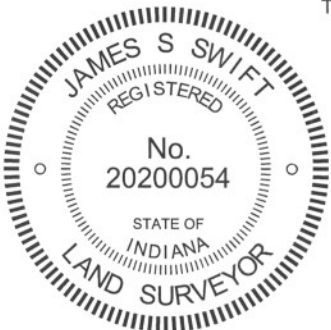
SCALE 1" = 60'



- A - Boone County witness mark, flush, 24.88'
  - B - W. edge, bottom, Metal sign post mile marker "2", 188.17'
  - C - 5/8" rebar with metal cap "Carl Anderson, Engr", 35.56'
  - D - Brass plug in concrete, Type C Mon., flush, 316.78'
- Boone County witness mark is a 3/8" diameter x 2' long rebar bearing a metal cap stamped "Boone County Witness Point."

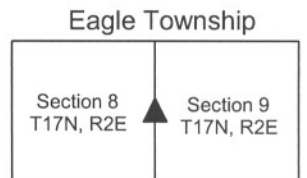


The rebar was found in the field. This corner is shown as the terminal points for measurements on records dated 1837. No specific descriptions of the corner were found in this or subsequent records. No recent tie cards were found referencing the corner. The corner is shown on the plans for Interstate I-465 (now called I-865), Indiana State Highway Commission project I-465-4 (124) 135, fiscal year 1965, approved by the Chief Engineer of the Indiana State Highway Commission on January 7, 1966. The corner is shown as being at station 191+91, 93.5' right "95.5' from semi-tang to approx. 1/4 Sec. Cor. no stone found." The plans show this corner as being at the intersection of fences to the west and north, and it is known that it falls at the extension of a well established fence to the south. Evidence in the immediate vicinity of the corner has been removed by the construction of the adjoining roadway and associated earthwork. The found rebar is approximately 0.3' north and 0.3' west of the position of the corner as computed from the plans by holding the type C monument found at Station 194+91.5, (P.I.) and orienting the center line towards the type C monument found at station 127+05.7 (beginning of project), both of which monuments are believed to date from the original construction of the highway. Variations of up to one foot in all directions were found with respect to the relative positions of these monuments and numerous other centerline control points found along the highway. Hence, the position of the rebar matches the station within the general uncertainty of control shown on the plans, though it does not precisely match the station relative to the nearest original centerline control monument. The rebar was held as the corner. This corner was originally established as a wood post in 1821.



*Kenneth E. Hedge*  
Kenneth E. Hedge, County Surveyor

*James S. Swift*  
James S. Swift, IN LS 20200054  
July 25, 2011





# SECTION CORNER RECORD

SE 800-750

## BOONE COUNTY SURVEYOR'S OFFICE

State Plane grid coordinates NAD83 (NSRS 2007):

North: 1703981.08 East: 3165128.69 (U.S. survey feet)

Type of monument: Etched "+" on the top of a stone.

Depth: Two inches above adjacent ground.

Indiana tie card references:

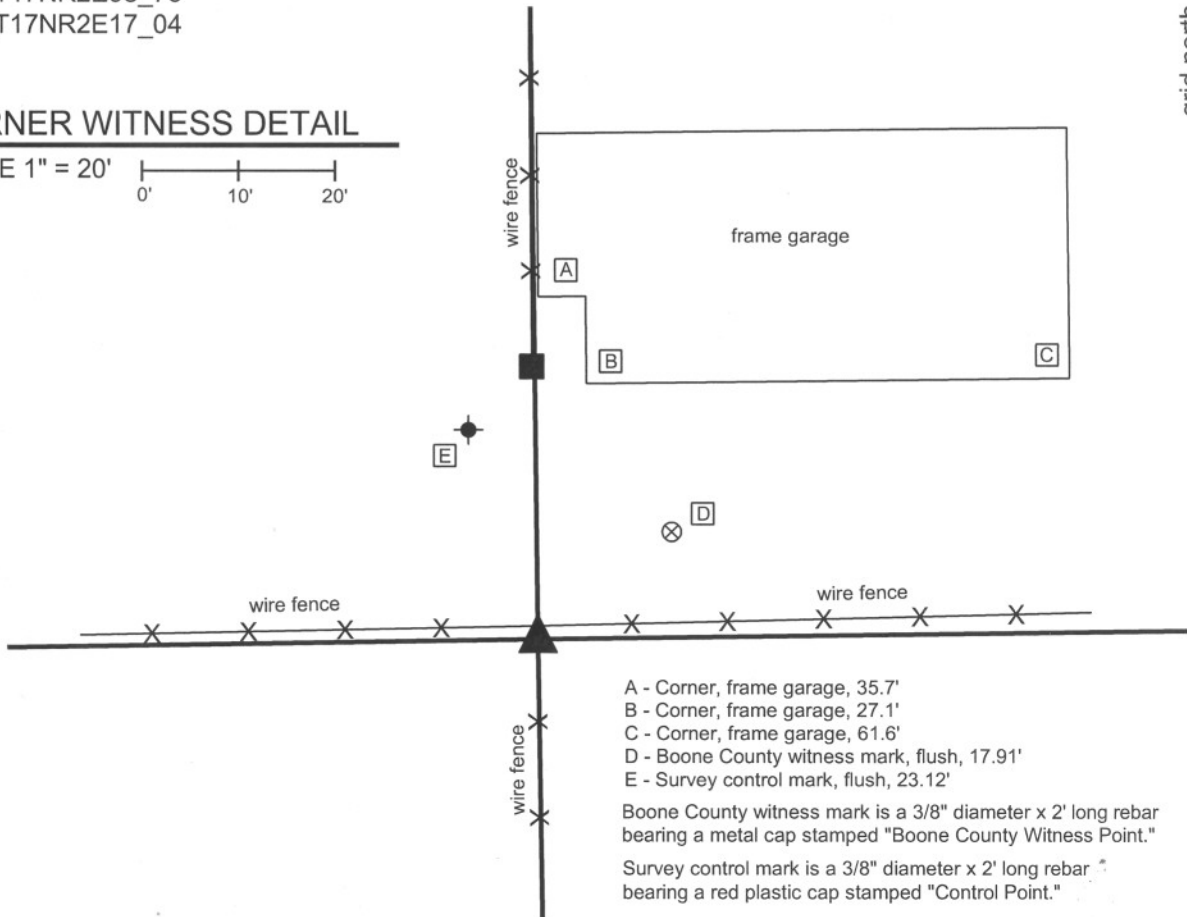
IN02\_T17NR2E08\_76

IN02\_T17NR2E17\_04



### CORNER WITNESS DETAIL

SCALE 1" = 20'



- A - Corner, frame garage, 35.7'
- B - Corner, frame garage, 27.1'
- C - Corner, frame garage, 61.6'
- D - Boone County witness mark, flush, 17.91'
- E - Survey control mark, flush, 23.12'

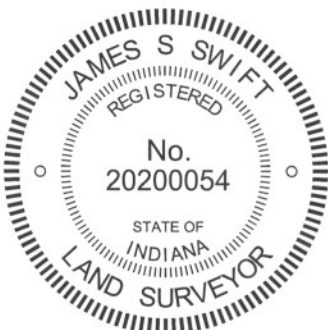
Boone County witness mark is a 3/8" diameter x 2' long rebar bearing a metal cap stamped "Boone County Witness Point."

Survey control mark is a 3/8" diameter x 2' long rebar bearing a red plastic cap stamped "Control Point."

The stone was found in place.

No specific descriptions of this corner were found in the BCS Surveyor's Record beyond the original establishment of the corner as a wood post in 1821. References by the Marion County Surveyor call for a stone found or stone with a cut "X" dating to 1959.

The stone is slightly south of a wood corner post, has a distinct etched "+" mark on the top and gives every appearance of being purposely set to mark the corner. The etched "+" mark on the top of the stone was held as the specific location of the corner. The stone was left in place, undisturbed.



Kenneth E. Hedge, County Surveyor

James S. Swift, IN LS 20200054  
March 30, 2012, Revised April 30, 2012

Eagle Twp  
Boone Cnty

Section 8  
T17N, R2E

Pike Twp  
Marion Cnty

Section 17  
T17N, R2E



PHOTOGRAPHIC DOCUMENTATION

Date of photography: April 18, 2008

The stone from above.



The stone from above, close-up.



The stone and post. View from south-southeast.



For details and documentation, refer to related sheet "Section Corner Record."

# SECTION CORNER RECORD

## BOONE COUNTY SURVEYOR'S OFFICE

SE 800-800

State Plane grid coordinates NAD83 (NSRS 2007):

North: 1704015.27 East: 3167772.18 (U.S. survey feet)

Type of monument: Rebar with Marion County Surveyor's Office cap

Depth: Flush with adjacent road surface.

Indiana tie card references:

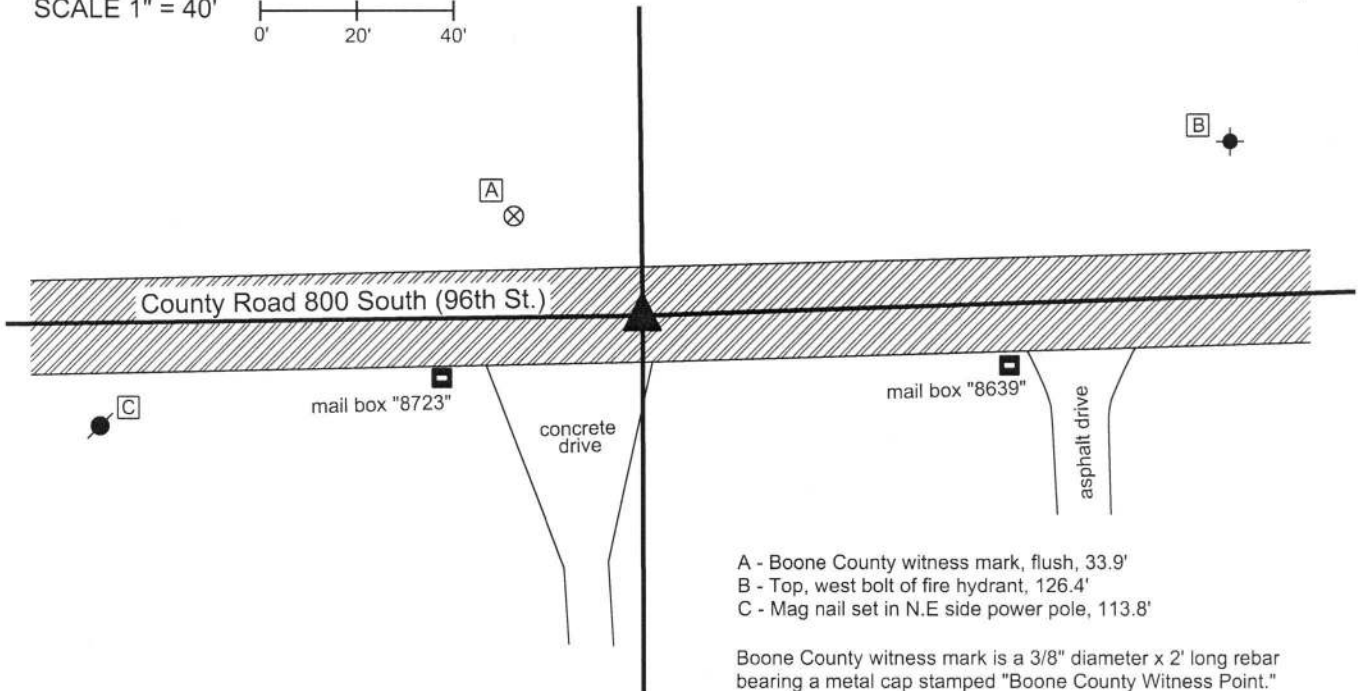
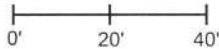
IN02\_T17NR2E08\_80

IN02\_T17NR2E09\_72



### CORNER WITNESS DETAIL

SCALE 1" = 40'

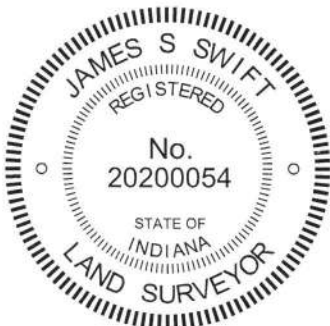


- A - Boone County witness mark, flush, 33.9'
- B - Top, west bolt of fire hydrant, 126.4'
- C - Mag nail set in N.E side power pole, 113.8'

Boone County witness mark is a 3/8" diameter x 2' long rebar bearing a metal cap stamped "Boone County Witness Point."

The Harrison monument was set in place of a rebar bearing the cap "MCSO" on May 31, 2018. A previous BCS tie card dated March 30, 2012 stated the following: "The capped rebar was found in place. No specific descriptions of this corner were found in the BCS Surveyor's Record beyond the original establishment of the corner as a wood post in 1821. A BCS tie card dated April 6, 1970 states "No stone. Set RRR." The corner has been referenced by the Marion County Surveyor's Office repeatedly. 1977 MCSO references call for a rebar. In 1981 the corner was excavated by MCSO and no stone or sub-surface mark was found. A rebar was set. Subsequent references call for a rebar. The found capped rebar was held as marking the corner. No recent excavation was performed by the Boone County Surveyors Office at this corner."

It is noted that minor excavation was performed by representatives of the Boone and Marion County Surveyor's Offices on May 31, 2018 for purposes of installing the new monument. No additional evidence beside the existing rebar was found. The new Harrison monument was set in the same position as the rebar, which was removed.



*Kenneth E. Hedge*  
 Kenneth E. Hedge, County Surveyor

Eagle Twp  
Boone Cnty

*James S. Swift*  
 James S. Swift, IN LS 20200054  
 June 27, 2018

Pike Twp  
Marion Cnty

Section 8 T17N, R2E	Section 9 T17N, R2E
Section 17 T17N, R2E	Section 16 T17N, R2E