

SECTION CORNER RECORD

NE 400-600

BOONE COUNTY SURVEYOR'S OFFICE

State Plane grid coordinates NAD83 (NSRS 2007):

Corner 1: North: 1767343.74 East: 3156123.38 (U.S. survey feet)
 Corner 2: North: 1767394.12 East: 3156121.99 (U.S. survey feet)

CORNER WITNESS DETAIL

SCALE 1" = 40'
 0' 20' 40'

Corner 1:

Type of monument: Harrison, 4" disk 'Section Corner'
 Depth: One inch below adjacent road surface

Corner 2:

Type of monument: Harrison, 4" disk 'Section Corner'
 Depth: One inch below adjacent road surface

Indiana tie card references:

IN02_T19NR1E12_80 IN02_T19NR1E13_08
 IN02_T19NR2E07_72 IN02_T19NR2E18_00

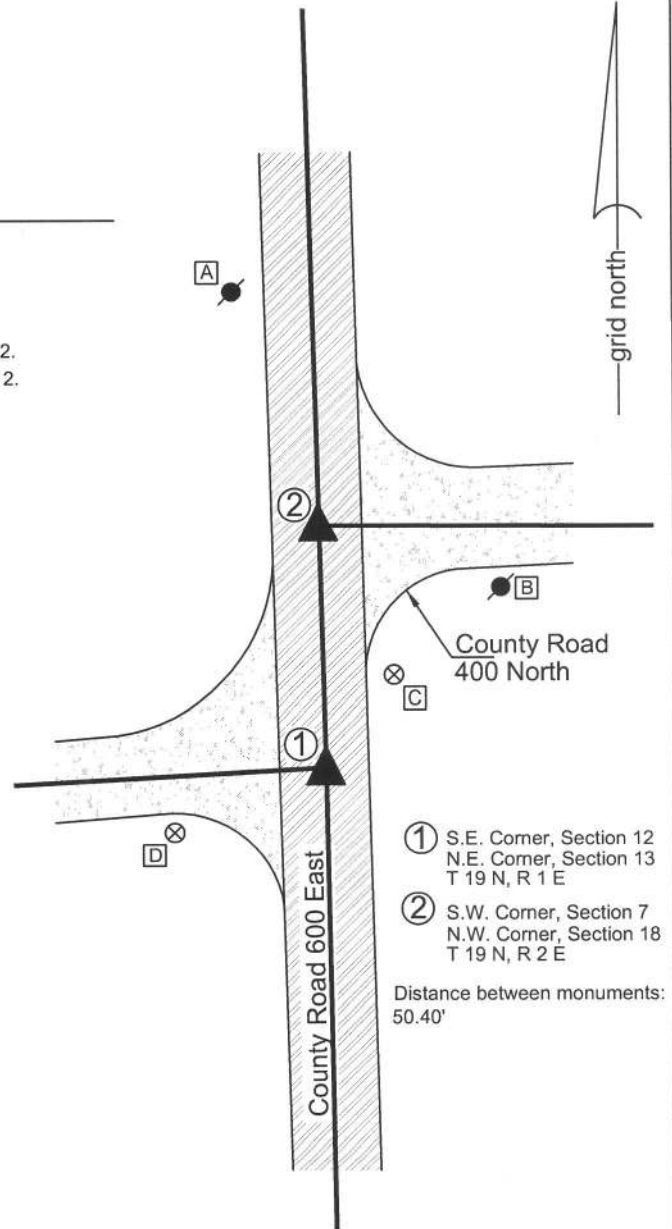
- A - Mag nail set in S. side power pole, 2' a.g., 98.81' to corner 1, 49.84' to corner 2.
- B - Mag nail set in W. side power pole, 2' a.g., 51.09' to corner 1, 38.56' to corner 2.
- C - Boone County witness mark, flush, 23.64' to corner 1, 35.13' to corner 2.
- D - Boone County witness mark, flush, 34.16' to corner 1, 70.56' to corner 2.

Boone County witness mark is a 3/8" diameter x 2' long rebar bearing a metal cap stamped "Boone County Witness Point."

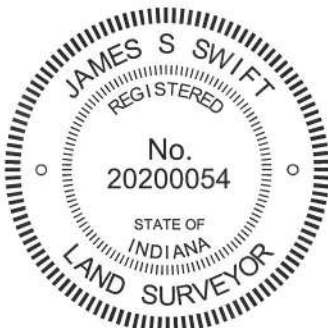
A harrison monument was set in place of a stone at corner 1 and over a stone at corner 2.

A BCS record of November 7, 1872 pertaining to corner 2 states "Reestablished from the trees 75 lks North of corner Sects 12 & 13. Set a Rock 22.16 by 10 marked +." A BCS tie card dated July 28, 2005 shows both corners as harrison monuments with no documentation of source.

These corners were excavated on June 16, 2010. Prior to excavation, harrison monuments were visible at the surface of the road. Corner 2 was excavated first. Excavation revealed no further evidence directly below the harrison monument, but the record stone described in 1872 was found slightly south and west of the harrison. The stone is embedded in the clay layer below the road at 17 inches deep and measures 22 inches tall by 17 inches N-S by 10 inches E-W with a clearly visible mark etched on the top near the east side of the stone. The mark appears to be a "+". The E-W part of the "+" is fully visible but only the N section of the N-S part is visible. While the stone at corner 2 was still exposed, corner 1 was excavated. Excavation at this corner revealed a stone found at distance slightly longer than the reported 75 links. This stone was also embedded in the clay layer below the road. The stone was removed and measured, being 4 inches tall by 6 inches E-W by 9 inches N-S. The harrison monument at corner 2 was set directly over the etched mark on the top of the stone. The harrison monument at corner 1 was set in place of the approximate top, center of the position of the stone and specifically on the range line as determined by corner 2. Corner 1 is 0.3 foot north of the position of the former harrison monument and corner 2 is 0.7 feet south and 0.3 feet west of the position of the former harrison monument. It is noted that the original recorded closing distance between the corners is 77 links (50.8'), the 1872 record reports 75 links (49.5') links and the distance measured is 50.40 feet. Corner 1 was originally established as a wood post in 1819. Corner 2 was originally established as a wood post in 1821.



- ① S.E. Corner, Section 12
N.E. Corner, Section 13
T 19 N, R 1 E
 - ② S.W. Corner, Section 7
N.W. Corner, Section 18
T 19 N, R 2 E
- Distance between monuments:
50.40'



Kenneth E. Hedge
 Kenneth E. Hedge, County Surveyor

James S. Swift
 James S. Swift, IN LS 20200054
 July 25, 2011

	Clinton Twp	Marion Twp
Clinton Twp	Section 12 T19N, R1E	Section 7 T19N, R2E
Center Twp	Section 13 T19N, R1E	Section 18 T19N, R2E

PHOTOGRAPHIC DOCUMENTATION

Date of photography: June 16, 2010

The stone at the closing corner (corner 2) from above and west.



The stone at corner 2 from above and south.



View from the west, looking across the stone at corner 2 and east along County Road 400 North.



The stone at corner 2 from above. Note the etched mark on the top of the stone.



The stone at the standard corner (corner 1) from above and east.



For details and documentation, refer to related sheet "Section Corner Record."

SECTION CORNER RECORD

NE 400-650

BOONE COUNTY SURVEYOR'S OFFICE

State Plane grid coordinates NAD83 (CORS96):

North: 1767385.59 East: 3158931.44 (U.S. survey feet)

Type of monument: Harrison, 4" disk 'Section Corner'

Depth: six inches below adjacent gravel road surface

Indiana tie card references:

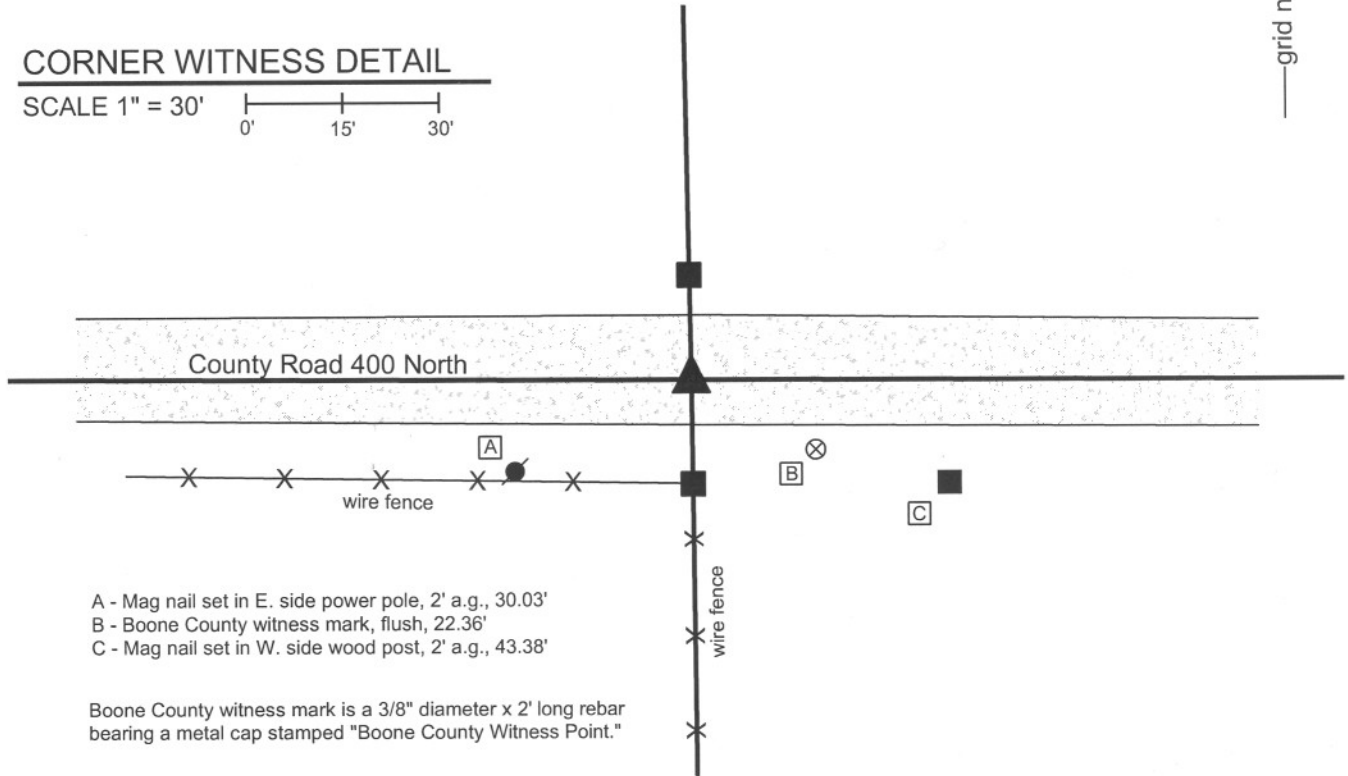
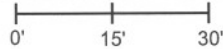
IN02_T19NR2E07_76

IN02_T19NR2E18_04



CORNER WITNESS DETAIL

SCALE 1" = 30'



- A - Mag nail set in E. side power pole, 2' a.g., 30.03'
- B - Boone County witness mark, flush, 22.36'
- C - Mag nail set in W. side wood post, 2' a.g., 43.38'

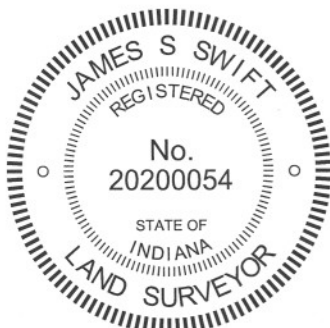
Boone County witness mark is a 3/8" diameter x 2' long rebar bearing a metal cap stamped "Boone County Witness Point."

The harrison monument was set in place of a stone found.

A BCS record of April 22, 1895 states "Established Rock 24x12x12 marked +." A BCS tie card dated June 13, 1974 states "no stone found."

This corner was excavated on March 11, 2011. Prior to excavation, a 1/2 inch diameter rebar was found at 2 inches deep. Excavation revealed a stone found at 9 inches deep. The stone had a clearly visible etched + on the top. The stone measured 17 inches tall by 12 inches N-S by 10 inches E-W. The stone fit the characteristics of stones set by the County Surveyor, being vertical, oriented in cardinal directions, embedded in the clay layer below the road. The etched + was so distinct as to leave nothing to the imagination of the field surveyor about where the specific corner was. The stone does not match the dimensions of the 1895 record. Excavation revealed no further evidence. The stone fit with local evidence, being in the center of the E-W county road and approximately 1 rod from each of the wood end posts on the north and south side of the road. The stone was held as marking the corner. The stone was removed and a harrison monument was set in the position of the etched +. The rebar, removed during excavation, had been 1.1 foot north and 0.4 foot east of the etched + on the stone.

This corner was originally established as a wood post in July, 1821.



Kenneth E. Hedge
Kenneth E. Hedge, County Surveyor

James S. Swift
James S. Swift, IN LS 20200054
March 1, 2012

Marion Twp

Section 7
T19N, R2E

Section 18
T19N, R2E

PHOTOGRAPHIC DOCUMENTATION

Date of photography: March 11, 2011

The top of the stone as first exposed.
Note the distinct etched "+" mark on the top.



The stone after removal from the road bed.



For details and documentation, refer to related sheet "Section Corner Record."

SECTION CORNER RECORD

NE 400-700

BOONE COUNTY SURVEYOR'S OFFICE

State Plane grid coordinates NAD83 (NSRS 2007):
North: 1767379.15 East: 3161576.80 (U.S. survey feet)

Type of monument: Harrison, 4" disk 'Section Corner'
Depth: Six inches below the surface of the gravel road.

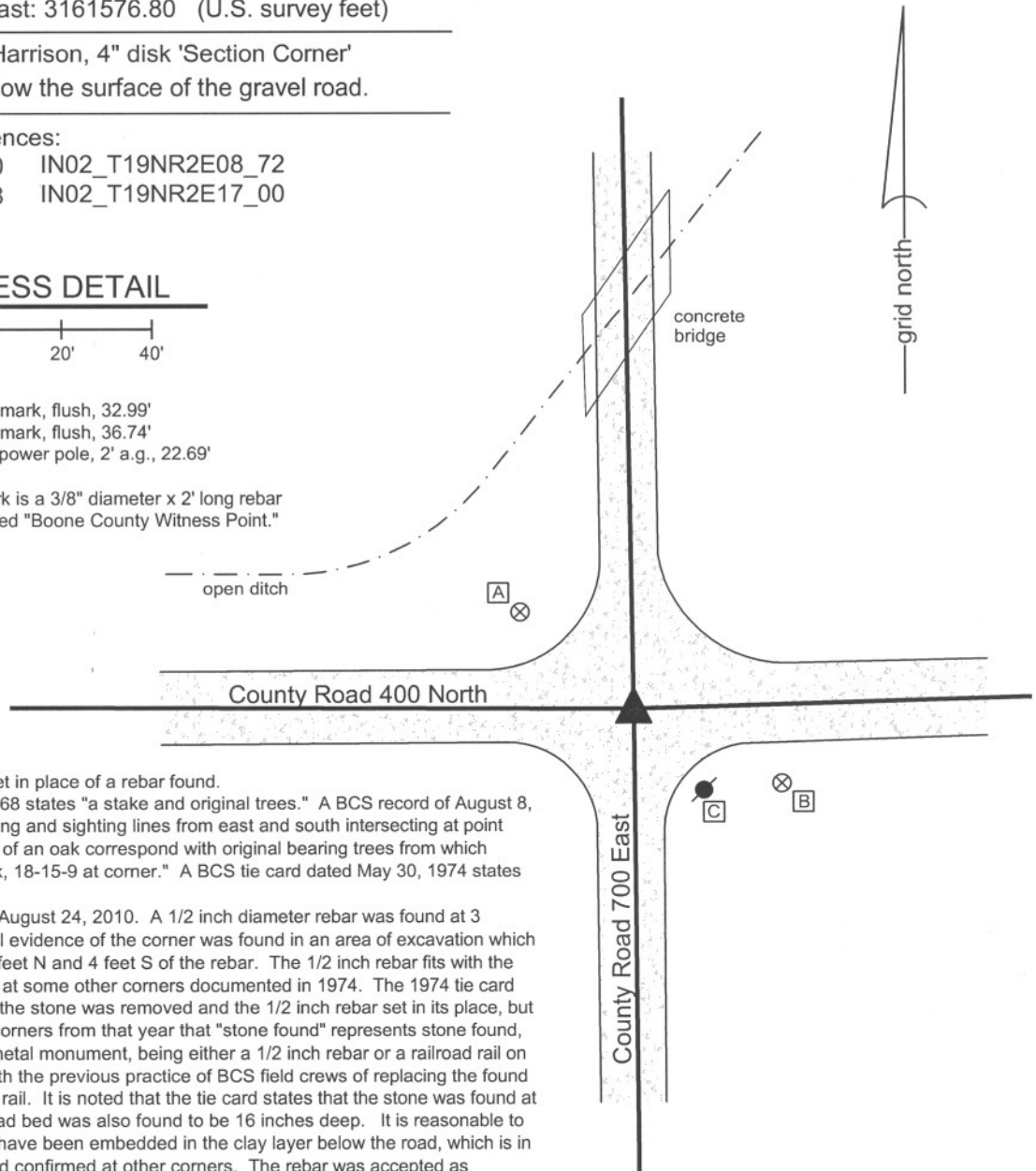
Indiana tie card references:
IN02_T19NR2E07_80 IN02_T19NR2E08_72
IN02_T19NR2E18_08 IN02_T19NR2E17_00

CORNER WITNESS DETAIL

SCALE 1" = 40'
0' 20' 40'

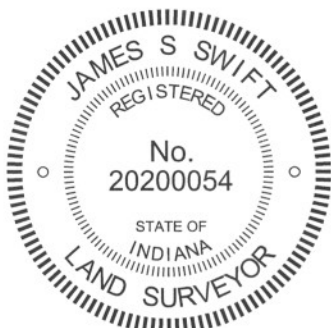
- A - Boone County witness mark, flush, 32.99'
- B - Boone County witness mark, flush, 36.74'
- C - Mag nail set in N. side power pole, 2' a.g., 22.69'

Boone County witness mark is a 3/8" diameter x 2' long rebar bearing a metal cap stamped "Boone County Witness Point."



The harrison monument was set in place of a rebar found. A BCS record of August 27, 1868 states "a stake and original trees." A BCS record of August 8, 1912 states "Found by measuring and sighting lines from east and south intersecting at point where an Elm stump and roots of an oak correspond with original bearing trees from which re-established corner. Set rock, 18-15-9 at corner." A BCS tie card dated May 30, 1974 states "Stone found, 16" deep."

This corner was excavated on August 24, 2010. A 1/2 inch diameter rebar was found at 3 inches deep. No other physical evidence of the corner was found in an area of excavation which extended 6 feet W, 4 feet E, 4 feet N and 4 feet S of the rebar. The 1/2 inch rebar fits with the character of monuments found at some other corners documented in 1974. The 1974 tie card does not specifically state that the stone was removed and the 1/2 inch rebar set in its place, but it has been observed at other corners from that year that "stone found" represents stone found, removed and replaced with a metal monument, being either a 1/2 inch rebar or a railroad rail on end. This is also in keeping with the previous practice of BCS field crews of replacing the found stone with a section of railroad rail. It is noted that the tie card states that the stone was found at 16 inches deep and that the road bed was also found to be 16 inches deep. It is reasonable to conclude that the stone would have been embedded in the clay layer below the road, which is in character with stones found and confirmed at other corners. The rebar was accepted as providing the best available evidence of the stone found in 1974 and held as marking the corner. The harrison monument was set in place of the found rebar. This corner was originally established as a wood post in July, 1821.



Kenneth E. Hedge
Kenneth E. Hedge, County Surveyor

James S. Swift
James S. Swift, IN LS 20200054
July 25, 2011

Marion Township

Section 7 T19N, R2E	Section 8 T19N, R2E
Section 18 T19N, R2E	Section 17 T19N, R2E

SECTION CORNER RECORD

NE 450-600

BOONE COUNTY SURVEYOR'S OFFICE

State Plane grid coordinates NAD83 (NSRS 2007):

Corner 1: North: 1770006.12 East: 3156050.22 (U.S. survey feet)

Corner 2: North: 1770019.32 East: 3156050.06 (U.S. survey feet)

Corner 1

Type of monument: Harrison, 4" disk 'Section Corner'

Depth: flush with adjacent road surface

Corner 2

Type of monument: Harrison, 4" disk 'Section Corner'

Depth: flush with adjacent road surface

Indiana tie card references:

IN02_T19NR1E12_44

IN02_T19NR1E07_36

The harrison monuments were set over stones found.

A BCS record dated August 26-29, 1868 references the closing corner (corner 2) as witnessed by two walnut trees. This record does not call for a monument at the corner. BCS records of December 11-12, 1871 state "Established from Walnuts of former survey Set Rock 25.13.7 +. Reestab D Sect 12, 20 links South of H. Rock 11.7.4 +." and "Reestablished 20 links south of H Sect. 7. Set Rock 11.7.4 +." A BCS record of October 28, 1891 states "Found Rock and both witnesses for 'H' Sect. 7, R2E. Reest cor D 20 links South of 'H'. Found old rock + 11.7.4 which had been removed and replaced it also placed above it another rock 20.11.10 at cor. Mk 1/4 on W. side mk X on S. side." A BCS tie card dated August 1, 2005 shows both corners as harrison monuments, 10.55 feet apart, with no documentation of source.

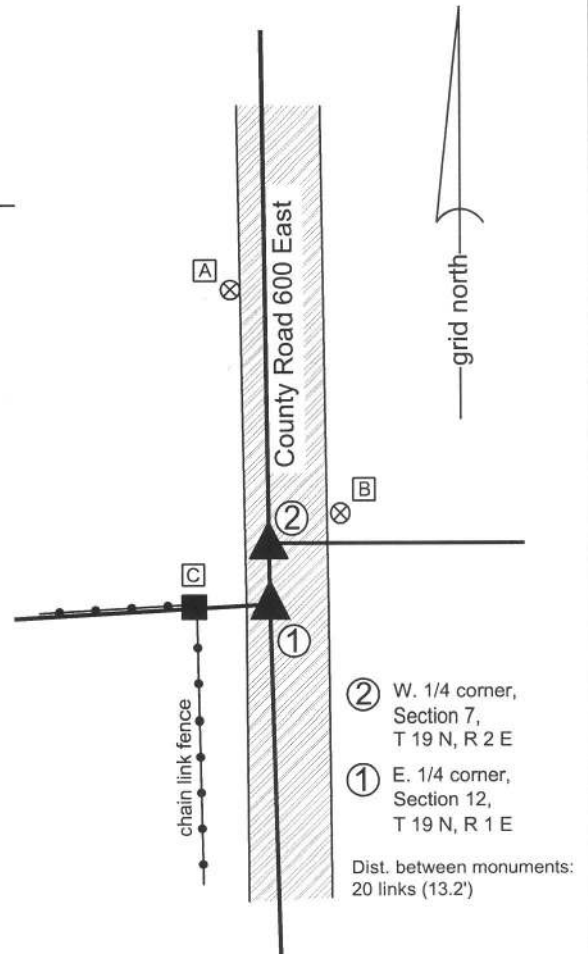
These corners were excavated on May 27, 2010. Prior to excavation harrison monuments were found in agreement with the 2005 tie cards. Excavation revealed the record stones as described in the 1871 records. The stone at the standard corner (corner 1, called corner D in the records for section 12-19N-R1E) was found at 18 inches deep, 4.3 feet west and 0.9 foot south of the southerly of the two harrison monuments. The stone appeared to have been slightly disturbed, having apparently been broken on the west side and possibly leaned towards the north. The etched "+" on the south side was clearly visible. The mark on the west side was not visible. With 15 inches of the stone exposed, it measured 10 inches N-S by 11 inches E-W, with a sharp N-S ridge. As situated, the stone had a distinct high point at the south end of the N-S ridge. If the stone had been hit from the south and leaned towards the north, as it appeared to have been, it appears that the approximate center of the ridge, prior to being shifted, would have been at approximately the same position as the high point and south end of the ridge, after being shifted.

The stone at the closing corner (corner 2, called corner H in the records for section 7, T19N, R2E) was found at 20 links (13.2 feet) north of the stone at the standard corner, at 10 inches below grade. With 6 inches exposed the stone measures 11 inches N-S by 6 inches E-W with a clearly visible "+" etched on the east side. The approximate top, center point of the stone falls at the record 20 links north of the high point and south end of the N-S ridge on the southerly stone. Immediately post excavation, a railroad spike was set over the top, center of the stone. The road was repaved in the fall of 2010. On May 27, 2011, the harrison monument at corner 1 was raised to the grade with road and a harrison monument was set at corner 2. Both stones were left in place and the harrison monuments are above the stones. The harrison monument shown on the 2005 tie card for corner 2 was 4.3 feet east and 1.8 feet south of the stone.

Corner 1 was originally established as a wood post in 1819. Corner 2 is not an original federal corner.

CORNER WITNESS DETAIL

SCALE 1" = 40'

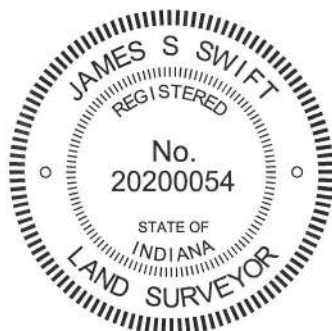


A - Boone County witness mark, flush, 74.33' to corner 1, 61.20' to corner 2.

B - Boone County witness mark, flush, 27.26' to corner 1, 18.99' to corner 2.

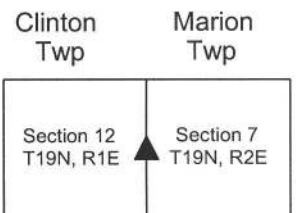
C - Mag nail set in N. side wood post, 10 in. a.g., 17.15' to corner 1, 21.35' to corner 2.

Boone County witness mark is a 3/8" diameter x 2' long rebar bearing a metal cap stamped "Boone County Witness Point."



Kenneth E. Hedge
Kenneth E. Hedge, County Surveyor

James S. Swift
James S. Swift, IN LS 20200054
July 25, 2011



PHOTOGRAPHIC DOCUMENTATION

Date of photography: May 27, 2010

View of the stone at the standard corner (corner 1) from above and west.



View of the stone at corner 1, showing the etched mark on the south side of the stone.



View from above corner 2, looking north along County Road 600 East.



View of the stone at the closing corner (corner 2), showing the etched mark on the east side of the stone.



View of the stone at corner 2 from above and north.



For details and documentation, refer to related sheet "Section Corner Record."

SECTION CORNER RECORD

NE 450-700

BOONE COUNTY SURVEYOR'S OFFICE

State Plane grid coordinates NAD83 (NSRS 2007):

North: 1770016.16 East: 3161530.92 (U.S. survey feet)

Type of monument: Harrison, 4" disk 'Section Corner'

Depth: six inches below adjacent gravel road surface

Indiana tie card references:

IN02_T19NR2E07_44

IN02_T19NR2E08_36

CORNER WITNESS DETAIL

SCALE 1" = 40'

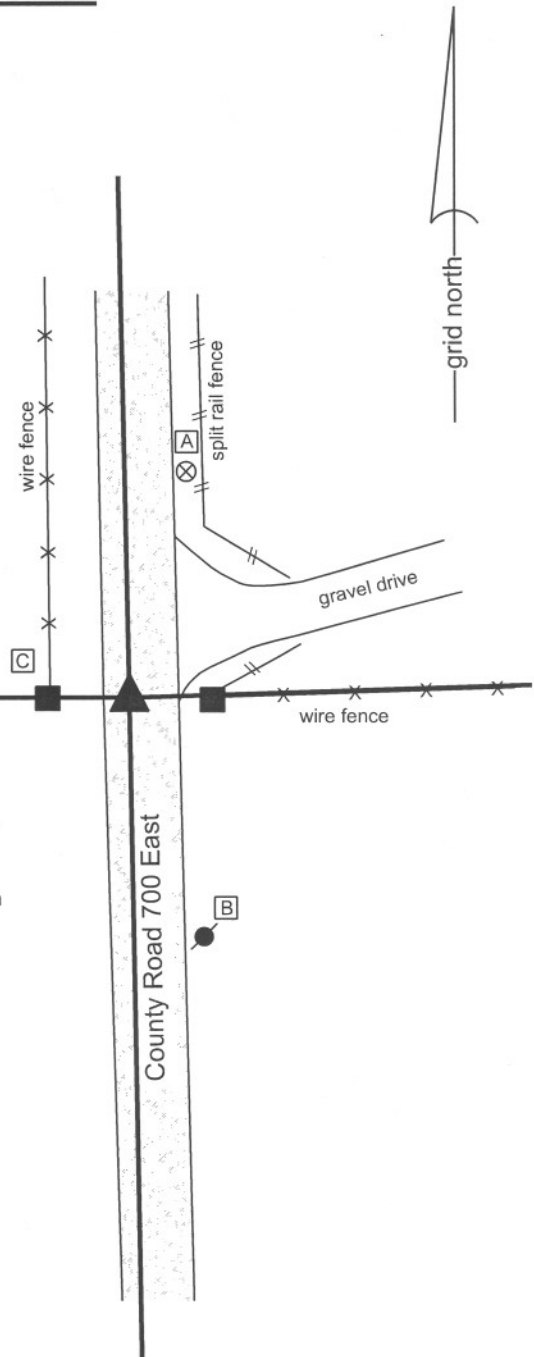


A - Boone County witness mark, flush, 48.56'

B - Mag nail set in N. side power pole, 2' a.g., 50.27'

C - Nail in bottlecap found in N.E. corner wood post, 10 in. a.g., 16.48'

Boone County witness mark is a 3/8" diameter x 2' long rebar bearing a metal cap stamped "Boone County Witness Point."

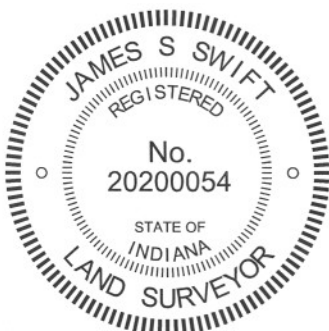


The harrison monument was set in place of a railroad spike found and a stone found. A BCS record of January 1837, ascribed to the writing of H. Lapham, shows the corner as present and provides distance ties to two witness trees, being an 8 inch diameter Ash and a 33 inch diameter Beech. A BCS record of August 26 and 29, 1868 states "Reestablished from trees of H. Lapham Sect. 8. Set Rock 26.18 by 15 in. marked + on top." A BCS tie card dated June 13, 1974 states "Found stone, 8" deep."

This corner was excavated on March 16, 2011. Prior to excavation, a railroad spike was found at 1 inch deep. The position of the railroad spike fit with the distance ties shown on the 1974 tie card. Excavation revealed the stone described in the 1868 record at 8 inches deep. The stone had a clearly etched + on the top. The railroad spike had been directly over the etched +. The stone was 26 inches tall by 15 inches E-W by 18 inches N-S. 5/8 inch diameter rebars were found on the East and West sides of the stone. The etched + on the stone was at 1 rod (16.5 feet) from the end posts on both the east and west sides of the road.

The stone was removed and a harrison monument was set in its place, specifically in the position of the railroad spike and etched + on the top of the stone.

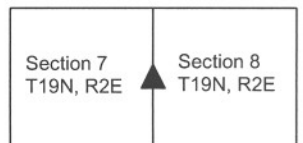
This corner was originally established as a wood post in July, 1821.



Kenneth E. Hedge
Kenneth E. Hedge, County Surveyor

James S. Swift
James S. Swift, IN LS 20200054
March 1, 2012

Marion Township



PHOTOGRAPHIC DOCUMENTATION

Date of photography: March 16, 2011

View of the top of the stone as first exposed, showing the etched "+" mark. Note the rust stain from the railroad spike which had been situated above the mark.



View from the southwest as the stone is being removed from the road bed.



View from the southeast as the stone is being removed from the road bed.



The stone lying on the side of the road. The mark which had been on the top of the stone is visible in the picture, as noted by the arrow.



For details and documentation, refer to related sheet "Section Corner Record."

SECTION CORNER RECORD

NE 500-600

BOONE COUNTY SURVEYOR'S OFFICE

State Plane grid coordinates NAD83 (NSRS 2007):

Corner 1: North: 1772662.46 East: 3156017.05 (U.S. survey feet)
 Corner 2: North: 1772645.96 East: 3156017.26 (U.S. survey feet)

CORNER WITNESS DETAIL

SCALE 1" = 40'

Corner 1:

Type of monument: Harrison, 4" disk 'Section Corner'

Depth: One inch below adjacent road surface

Corner 2:

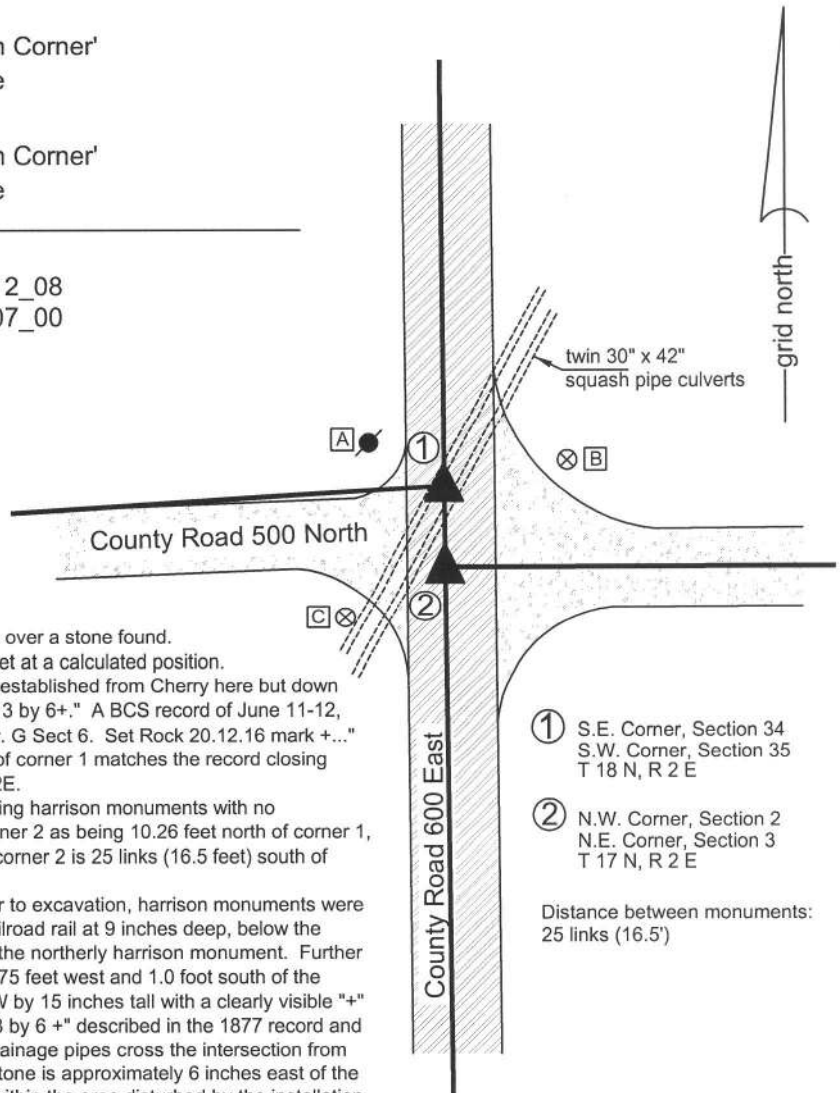
Type of monument: Harrison, 4" disk 'Section Corner'

Depth: One inch below adjacent road surface

Indiana tie card references:

IN02_T19NR1E01_80 IN02_T19NR1E12_08
 IN02_T19NR2E06_72 IN02_T19NR2E07_00

- A - Mag nail set in E. side power pole, 2' a.g.
16.52' to corner 1, 29.07' to corner 2.
- B - Boone County witness mark, flush,
26.07' to corner 1, 33.49' to corner 2.
- C - Boone County witness mark, flush,
33.06' to corner 1, 23.24' to corner 2.



The harrison monument at the closing corner (corner 2) was set over a stone found.
 The harrison monument at the standard corner (corner 1) was set at a calculated position.
 A BCS record of April 17, 1872, referring to corner 2, states "Reestablished from Cherry here but down by the roots, also found old stake at corner where set Rock 14.13 by 6+." A BCS record of June 11-12, 1877, referring to corner 1, states "Reestablished 25 lks North fr. G Sect 6. Set Rock 20.12.16 mark +..." It is noted that the referenced 25 link offset with corner 2 south of corner 1 matches the record closing distance documented in the original notes for Township 19N, R2E.
 A BCS tie card dated August 3, 2005 shows both corners as being harrison monuments with no documentation of source. It is noted that the tie card shows corner 2 as being 10.26 feet north of corner 1, whereas the original notes and the 1877 record both state that corner 2 is 25 links (16.5 feet) south of corner 1.
 This corner was excavated on May 28 and June 28, 2010. Prior to excavation, harrison monuments were found as shown on the 2005 tie card. Excavation revealed a railroad rail at 9 inches deep, below the southerly harrison monument. No monument was found below the northerly harrison monument. Further excavation revealed a stone found at 17 inches below grade, 2.75 feet west and 1.0 foot south of the southerly harrison. This stone is 6 inches N-S by 14 inches E-W by 15 inches tall with a clearly visible "+" etched on the top. The stone was accepted as being the "14.13 by 6 +" described in the 1877 record and was held as marking corner 2. A set of two corrugated metal drainage pipes cross the intersection from the southwest quadrant to the northeast quadrant. The found stone is approximately 6 inches east of the back-fill material associated with the pipes. Corner 1 falls well within the area disturbed by the installation of the pipes and no further evidence was found in the vicinity of corner 1. The specific position of corner 1 was established at 16.5 feet from corner 2, on the prolongation of the range line as determined by the positions of corner 2 and the standard quarter corner approximately one-half mile south.
 Corner 1 was originally established as a wood post in 1819 and corner 2 was originally established as a wood post in July, 1821.

- ① S.E. Corner, Section 34
S.W. Corner, Section 35
T 18 N, R 2 E
- ② N.W. Corner, Section 2
N.E. Corner, Section 3
T 17 N, R 2 E

Distance between monuments:
25 links (16.5')



Kenneth E. Hedge
 Kenneth E. Hedge, County Surveyor

James S. Swift
 James S. Swift, IN LS 20200054
 July 25, 2011

Clinton Twp	Marion Twp
Section 1 T19N, R1E	Section 6 T19N, R2E
Section 12 T19N, R1E	Section 7 T19N, R2E

PHOTOGRAPHIC DOCUMENTATION

Date of photography: June 28, 2010

Note: all pictures on this page show the closing corner (corner 2).

View of the stone as first exposed.



The stone washed to clearly show the etched mark on top.



View from above the stone, looking east along County Road 500 North.



View of the stone from above.



View of the stone from above and west.



For details and documentation, refer to related sheet "Section Corner Record."

SECTION CORNER RECORD

NE 500-650

BOONE COUNTY SURVEYOR'S OFFICE

State Plane grid coordinates NAD83 (CORS96):
North: 1772652.38 East: 3158839.16 (U.S. survey feet)

Type of monument: Harrison, 4" disk 'Section Corner'
Depth: six inches below adjacent gravel road surface

Indiana tie card references:
IN02_T19NR2E06_72
IN02_T19NR2E07_04

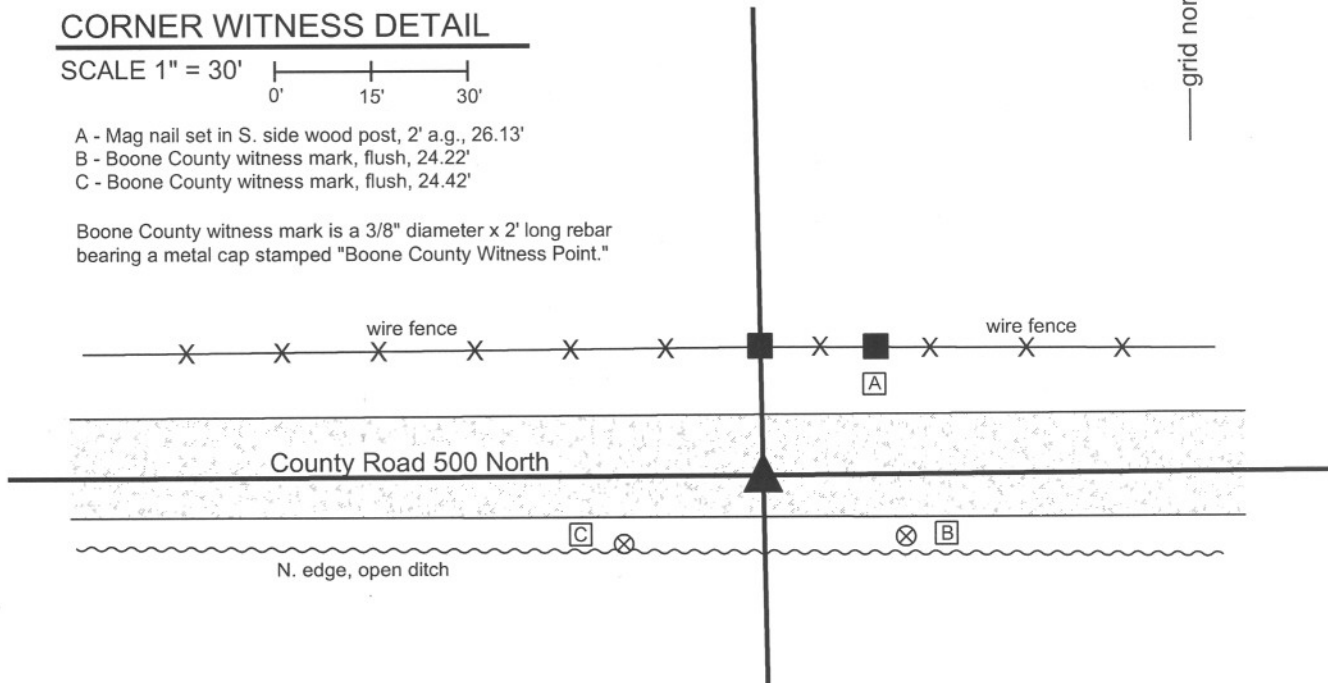


CORNER WITNESS DETAIL

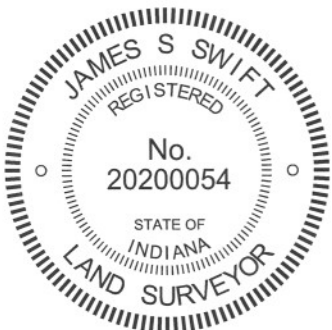
SCALE 1" = 30'
0' 15' 30'

- A - Mag nail set in S. side wood post, 2' a.g., 26.13'
- B - Boone County witness mark, flush, 24.22'
- C - Boone County witness mark, flush, 24.42'

Boone County witness mark is a 3/8" diameter x 2' long rebar bearing a metal cap stamped "Boone County Witness Point."



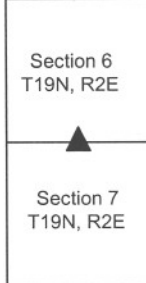
The harrison monument was set in place of a vertical section of railroad rail found. A BCS record of December 12, 1871 states "Rock was set Stump of Walnut shows." A BCS tie card dated June, 1970 states "No Stone, Found Rail." This corner was excavated on March 17, 2011. Prior to excavation, a railroad rail was found at 3 inches deep. Excavation of an area extending 5 feet north, 4 feet east, 4 feet south and 4 feet west of the rail yielded no further evidence of the corner. Excavation was performed to a minimum of 14 inches deep, the depth at which the road bed meets the clay layer below. It is noted that the 1970 tie card shows the rail as found. The earliest known examples of rails being set as section corner monuments in Boone County is 1967. It is known that, beginning in 1967, it was a common practice for BCS field crews to remove a stone, if found, and replace it with a section of railroad rail set on end. Neither a tie card nor field notes were found demonstrating the rail to be set at this corner. Hence, it is not known whether the rail was set as replacement of a found stone or just at the apparent corner, being in the middle of the road, opposite a wood corner post on the north side. In any case, as no other evidence was found, the found rail was accepted as being the best available evidence of the corner. The rail was removed and a harrison monument was set in its place. This corner was originally established as a wood post in July, 1821.



Kenneth E. Hedge
Kenneth E. Hedge, County Surveyor

James S. Swift
James S. Swift, IN LS 20200054
March 1, 2012

Marion Twp



SECTION CORNER RECORD

NE 500-700

BOONE COUNTY SURVEYOR'S OFFICE

State Plane grid coordinates NAD83 (CORS96):

North: 1772667.44 East: 3161478.48 (U.S. survey feet)

Type of monument: Harrison, 4" disk 'Section Corner'

Depth: six inches below adjacent gravel road surface

Indiana tie card references:

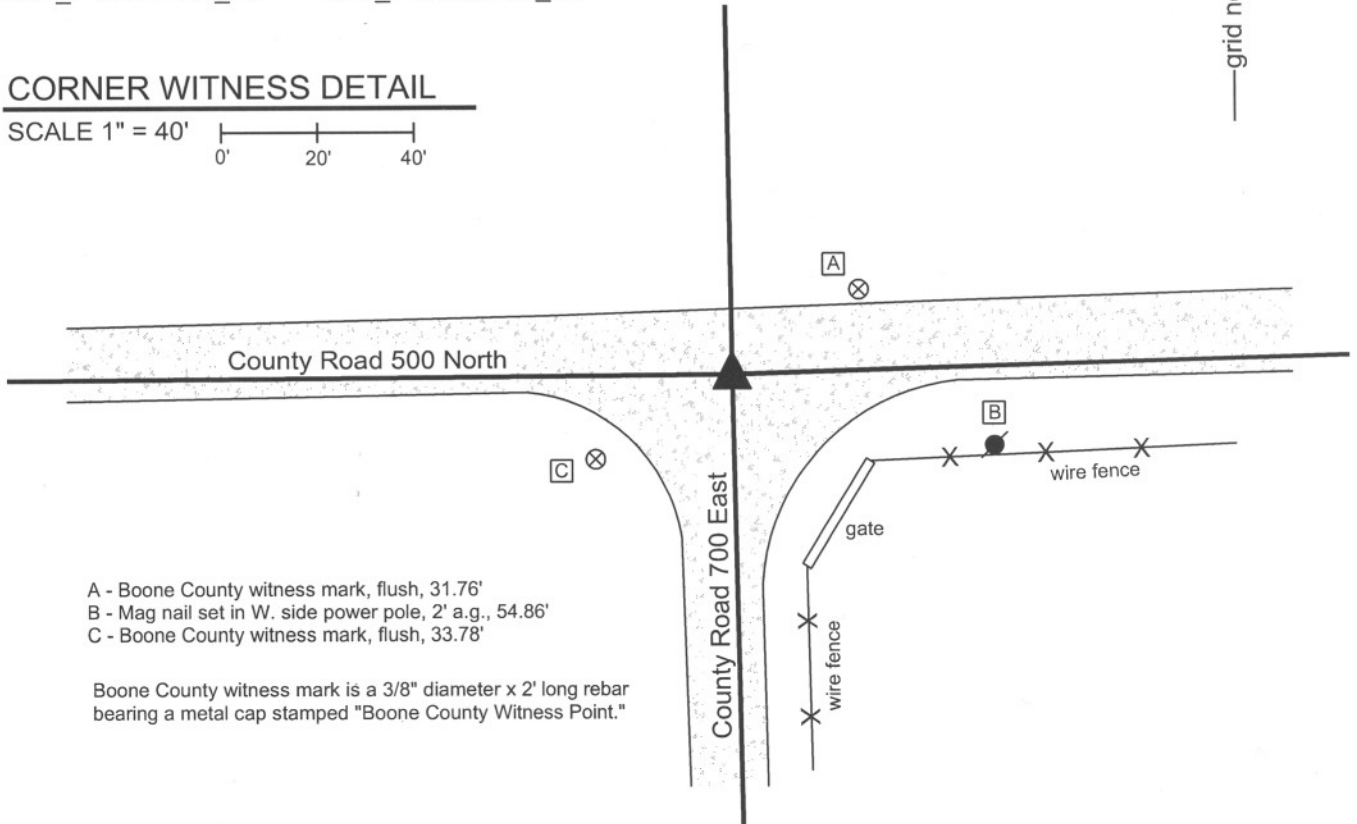
IN02_T19NR2E06_80 IN02_T19NR2E05_72

IN02_T19NR2E07_08 IN02_T19NR2E08_00



CORNER WITNESS DETAIL

SCALE 1" = 40'



- A - Boone County witness mark, flush, 31.76'
- B - Mag nail set in W. side power pole, 2' a.g., 54.86'
- C - Boone County witness mark, flush, 33.78'

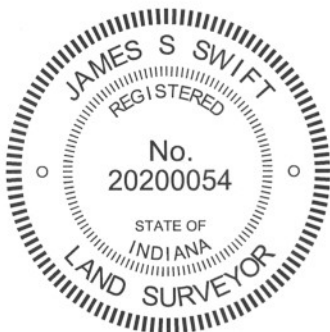
Boone County witness mark is a 3/8" diameter x 2' long rebar bearing a metal cap stamped "Boone County Witness Point."

The harrison monument was set over a stone found.

A BCS record of August 26 - 29, 1868 states "Reestablished from Beech stump, roots of a Oak and an Old Stake. Set Rock 12.9 by 8 marked +. A broken brick under it." A BCS tie card dated June 3, 1974 states "No Stone, Found Rail."

This corner was excavated on March 16, 2011. Prior to excavation, a vertical section of railroad rail was found at 2 inches below the surface of the gravel road. Excavation revealed the stone described in the 1868 record at 16 inches deep. With 8 inches of the top of the stone exposed, it measures 8 inches E-W by 9 inches N-S with a clearly visible etched + on the top. The stone is embedded in the clay layer below the road, with the top of the stone at the bottom of the road bed. A piece of brick was found next to the stone. The stone was held as marking the corner and left in place. The top 8 inches of the stone were encased in concrete and the harrison monument was set directly over the etched + on the top of the stone. The railroad rail, removed during excavation, had been 2.9 feet north and 0.2 foot west of the stone.

This corner was originally established as a wood post in July, 1821.



Kenneth E. Hedge
Kenneth E. Hedge, County Surveyor

James S. Swift
James S. Swift, IN LS 20200054
March 1, 2012

Marion Township

Section 6 T19N, R2E	Section 5 T19N, R2E
Section 7 T19N, R2E	Section 8 T19N, R2E

PHOTOGRAPHIC DOCUMENTATION

Date of photography: March 16, 2011

View of the stone as first exposed.



View of the stone from above and west.



View from above the stone, looking west along County Road 500 North.



View of the stone from above and south.



The stone from above shortly before being encased in concrete as part of setting the harrison monument over the stone.



For details and documentation, refer to related sheet "Section Corner Record."