

SECTION CORNER RECORD

SE 100-600

BOONE COUNTY SURVEYOR'S OFFICE

State Plane grid coordinates NAD83 (NSRS 2007):

North: 1740952.71 East: 3156359.24 (U.S. survey feet) (standard corner)

North: 1740988.34 East: 3156358.57 (U.S. survey feet) (closing corner)

Type of monument: Harrison, 4" disk 'Section Corner', 2 inches below gravel (Cor. 1)

36 inch length of 5/8 inch diam. rebar with metal cap 'Boone County Surveyor', flush (Cor. 2)

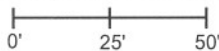
Indiana tie card references:

IN02_T18NR1E01_80 IN02_T18NR1E12_08

IN02_T18NR2E06_72 IN02_T18NR2E07_00

CORNER WITNESS DETAIL

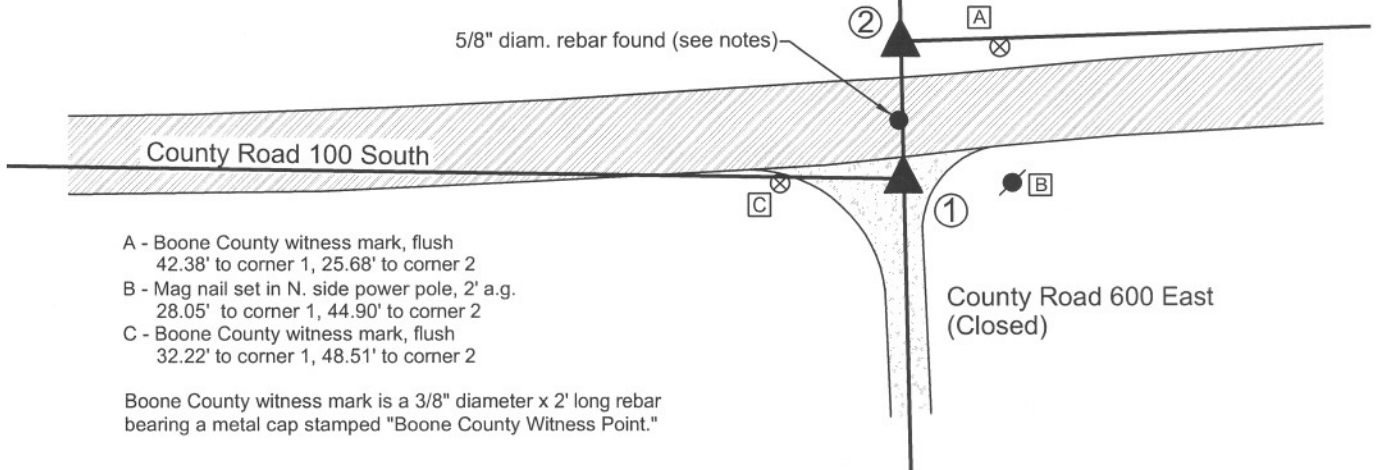
SCALE 1" = 50'



① S.E. Corner, Section 1
N.E. Corner, Section 12
T 18 N, R 1 E

② S.W. Corner, Section 6
N.W. Corner, Section 7
T 18 N, R 2 E

Distance between monuments:
54 links = 35.64 feet



- A - Boone County witness mark, flush
42.38' to corner 1, 25.68' to corner 2
- B - Mag nail set in N. side power pole, 2' a.g.
28.05' to corner 1, 44.90' to corner 2
- C - Boone County witness mark, flush
32.22' to corner 1, 48.51' to corner 2

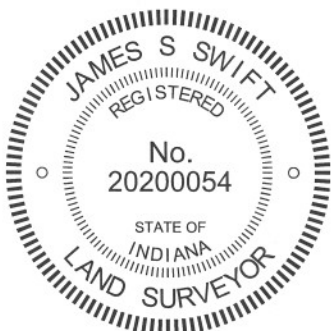
Boone County witness mark is a 3/8" diameter x 2' long rebar bearing a metal cap stamped "Boone County Witness Point."

The harrison monument at corner 1 was set in place of a 5/8 inch diameter rebar found. The capped rebar at corner 2 was set at a calculated position. A BCS record of February 16, 1871 states with respect to corner 1 "Reestablished from stump of trees. Set a Rock. 16,16,9 +." A BCS record of October 19, 1895 states with respect to corner 2, Established Rock 18x12x10 marked +." BCS field notes dated August 22, 1967 for which no tie card was found state with respect to corner 1, "no stone." A BCS tie card dated December 9, 1994 show rebars at both corners but do not specifically reference a distance between the two corners. A BCS tie card dated October 25, 2005 shows corner 1 as a harrison monument. This document does not mention the adjacent corner 2, nor does the diagram on the document demonstrate the jog in County Road 100 South as it crosses the range line.

Prior to excavation, Mr. Jerry Carter, Registered Surveyor, questioned the position of the harrison monument set in 2005. Mr. Carter previously worked for Anderson & Associates, the company which produced the tie card and which set the harrison monument, and was employed by that firm at the time the harrison monument was set. Mr. Carter expressed his firm conviction that the harrison monument was not in the same position as a rebar previously held by Anderson & Associates, which he believed to be the same rebar shown on the 1994 tie card. Mr. Carter calculated the position of the rebar from information in his files and discovered that precisely at the calculated position a rebar did indeed exist, although it appeared to have lost its magnetic qualities and did not register on magnetic locator device. The rebar was found to be 1.8 feet south and 7.8 feet east of the harrison monument. The found rebar fit much better with local evidence in the form of the existing center of County Road 600 East than did the harrison monument. Per Mr. Carter, the rebar fits with deed references, monumentation and occupation lines to the west.

Excavation at corner 1, encompassing the locations of the rebar and harrison monument yielded no further evidence. Excavation in the vicinity of corner 2 yielded several rocks, none of which matched the description in the 1895 record nor were positively identifiable as section corner markers. The found rebar at corner 1 was held as marking the corner and was replaced with a harrison monument. The position of corner 2 was established on line between corner 1 and the standard corner approximately 1/2 mile north at the record government closing distance of 54 links, or 35.64 feet.

It is noted that another rebar exists, being in the roadway as it jogs across the range line. This rebar is 1.0 foot west and 15.2 feet north of the harrison monument set at corner 1. The source of this rebar is not known. Its position does not fit with any other evidence of either corner. This intermediate rebar was left in place, but should not be interpreted as marking either corner. The harrison monument set in 2005 was removed.



Kenneth E. Hedge
Kenneth E. Hedge, County Surveyor

James S. Swift
James S. Swift, IN LS 20200054
March 30, 2012

Worth Township

Section 1 T18N, R1E	Section 6 T18N, R2E
Section 12 T18N, R1E	Section 7 T18N, R2E

SECTION CORNER RECORD

SE100-650

BOONE COUNTY SURVEYOR'S OFFICE

State Plane grid coordinates NAD83 (NSRS 2007):

North: 1741077.39 East: 3159230.19 (U.S. survey feet)

Type of monument: Harrison, 4" disk 'Section Corner'

Depth: One inch below adjacent road surface

Indiana tie card references:

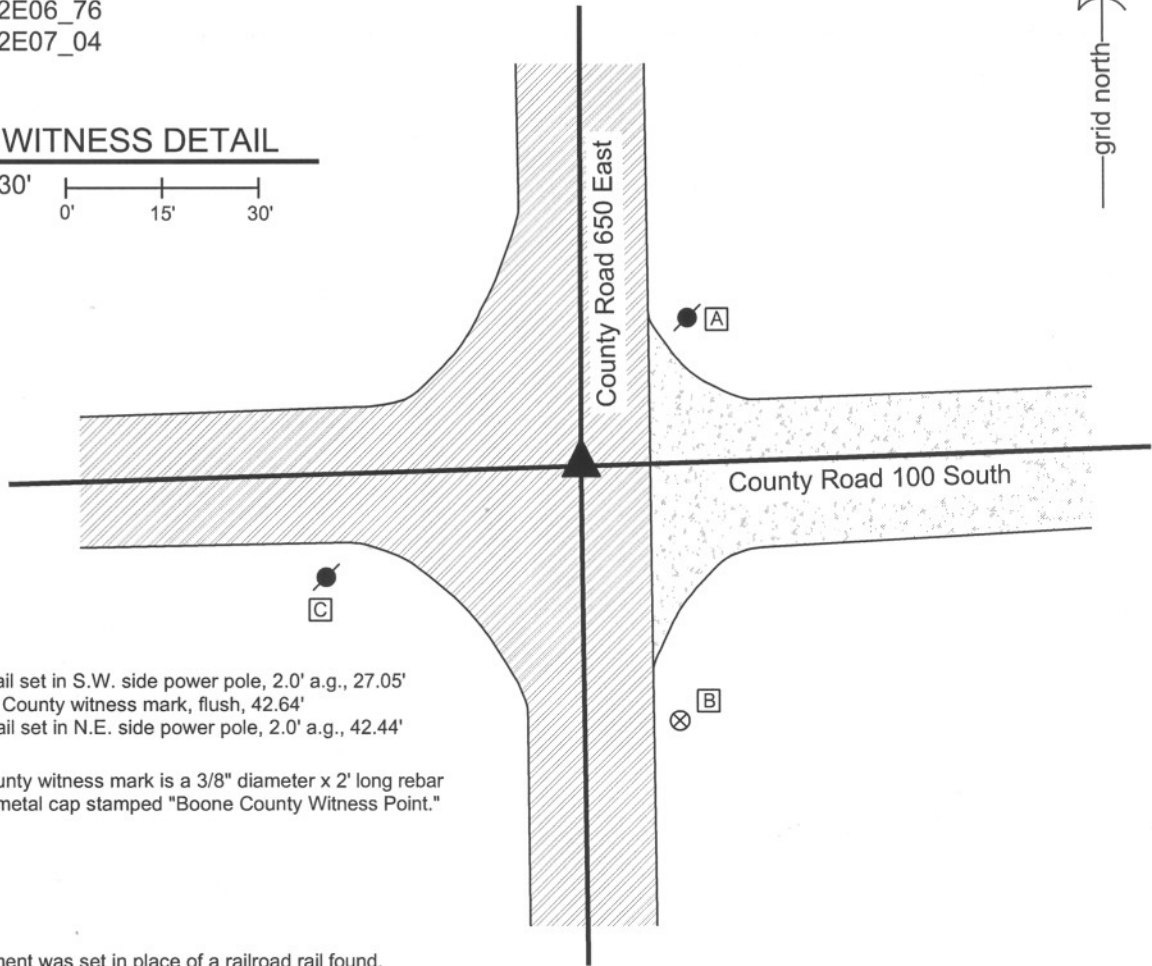
IN02_T18NR2E06_76

IN02_T18NR2E07_04



CORNER WITNESS DETAIL

SCALE 1" = 30'



A - Mag nail set in S.W. side power pole, 2.0' a.g., 27.05'

B - Boone County witness mark, flush, 42.64'

C - Mag nail set in N.E. side power pole, 2.0' a.g., 42.44'

Boone County witness mark is a 3/8" diameter x 2' long rebar bearing a metal cap stamped "Boone County Witness Point."

The harrison monument was set in place of a railroad rail found.

A BCS record of February 16 - 17, 1871 states "Re-est from stump of Maple. Set a Rock 17,12,11+." A BCS tie card dated August 17, 1967 states "stone located."

This corner was excavated on June 5, 2009. Prior to excavation a mag nail was found at the surface. Excavation revealed a railroad rail on end found at 12 inches deep directly below the mag nail. No other evidence was found. It is considered most likely that the railroad rail was set on August 17, 1967 and replaced the stone. Removing the stone and replacing it with a railroad rail on end was a common practice of field crews from this office in that time frame, though in most cases the documentation simply refers to the stone found and mentions neither the rail nor the removal of the stone.

The harrison monument was set in the position of the railroad rail and nail, both of which were removed during excavation.

This corner was originally established as a wood post in July, 1821.



Kenneth E. Hedge
Kenneth E. Hedge, County Surveyor

James S. Swift
James S. Swift, IN LS 20200054
July 14, 2010

Worth Twp

Section 6
T18N, R2E



Section 7
T18N, R2E

SECTION CORNER RECORD

SE 100-700

BOONE COUNTY SURVEYOR'S OFFICE

State Plane grid coordinates NAD83 (NSRS 2007):

North: 1741162.79 East: 3161869.83 (U.S. survey feet)

Type of monument: Harrison, 4" disk 'Section Corner'

Depth: Eight inches below adjacent gravel road surface

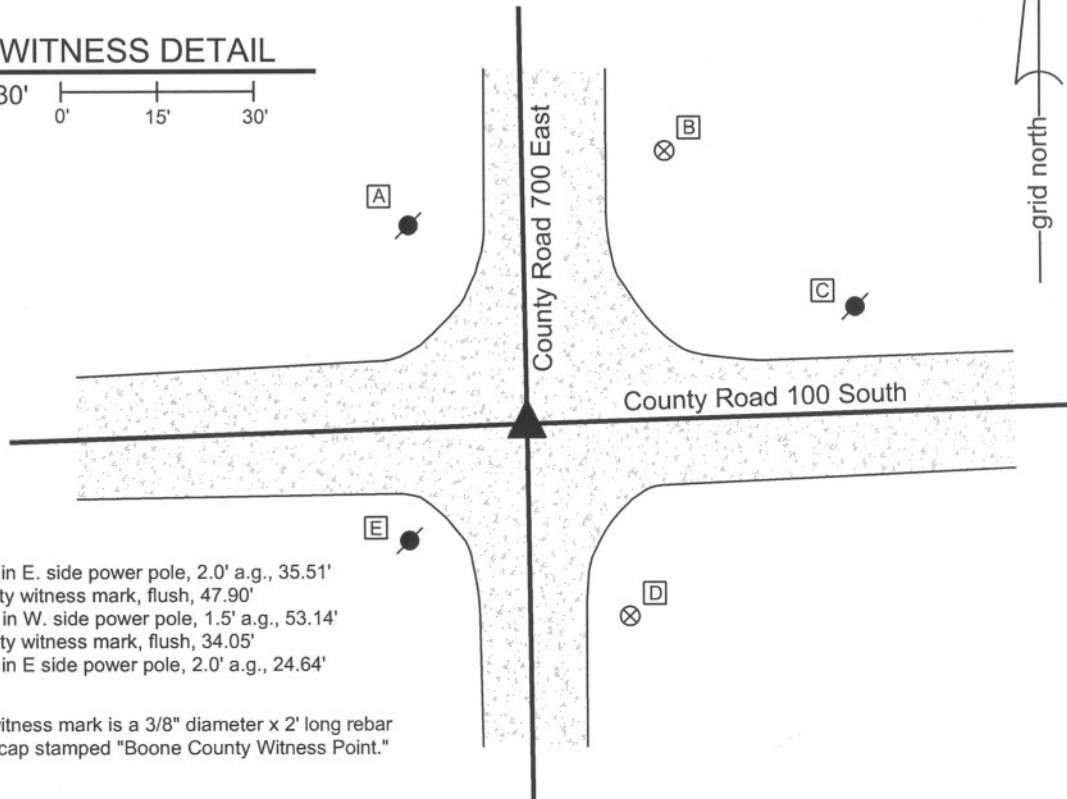
Indiana tie card references:

IN02_T18NR2E05_72 IN02_T18NR2E06_80

IN02_T18NR2E07_08 IN02_T18NR2E08_00

CORNER WITNESS DETAIL

SCALE 1" = 30'



- A - Mag nail set in E. side power pole, 2.0' a.g., 35.51'
- B - Boone County witness mark, flush, 47.90'
- C - Mag nail set in W. side power pole, 1.5' a.g., 53.14'
- D - Boone County witness mark, flush, 34.05'
- E - Mag nail set in E side power pole, 2.0' a.g., 24.64'

Boone County witness mark is a 3/8" diameter x 2' long rebar bearing a metal cap stamped "Boone County Witness Point."

The harrison monument was set in place of a rebar found.

A BCS record of February 27, 1871 states "Re Established from Oak stump. Set a Rock 14.12.10 marked + (under bridge)." A BCS tie card dated June 7, 1991 shows the corner as a 5/8 inch rebar found. This corner was excavated on May 28, 2009. Prior to excavation a 5/8 inch rebar was found at 3 inches below grade. The rebar was slightly bent at the top but the horizontal position of the main shaft was detectable. The reference in the 1871 to "under bridge" is a confusing reference as it is not clear where or why there might have been a bridge at this intersection. Excavation revealed no more monuments of any kind. An area 7 feet N-S by 11 feet E-W, centered on the found rebar at the approximate center of the intersection, was excavated to at least 30 inches deep and the clay layer below the main road bed. Remnants of an old red clay tile were found at 2 feet, directly under the rebar. The tile appeared to bear in a N-S direction. The presence of the tile may explain the absence of the stone, as the stone may have been removed during the installation of the tile. The harrison monument was set in the horizontal position of the rebar.

This corner was originally established as a wood post in July, 1821.



Kenneth E. Hedge
 Kenneth E. Hedge, County Surveyor

James S. Swift
 James S. Swift, IN LS 20200054
 July 14, 2010

Worth Twp Union Twp

Worth Township	Section 6 T18N, R2E	Section 5 T18N, R2E
	Section 7 T18N, R2E	Section 8 T18N, R2E

SECTION CORNER RECORD

SE 150-600

BOONE COUNTY SURVEYOR'S OFFICE

State Plane grid coordinates NAD83 (NSRS 2007):

North: 1738316.88 East: 3156415.69 (U.S. survey feet) (corner 1)

North: 1738334.70 East: 3156415.31 (U.S. survey feet) (corner 2)

Type of monument: Harrison, 4" disk 'Section Corner' (corner 1 only)

Depth: 6 inches below gravel road surface

Indiana tie card references:

IN02_T18NR1E12_44

IN02_T18NR2E07_36

CORNER WITNESS DETAIL

SCALE 1" = 20'



A - Mag nail set in E. side wood post, 0.7' a.g., 16.2'

B - Boone County witness mark, flush, 16.44'

C - Boone County witness mark, flush, 38.61'

All ties reference the harrison monument at corner 1.

Boone County witness mark is a 3/8" diameter x 2' long rebar bearing a metal cap stamped "Boone County Witness Point."

The harrison monument was set in place of a railroad found.

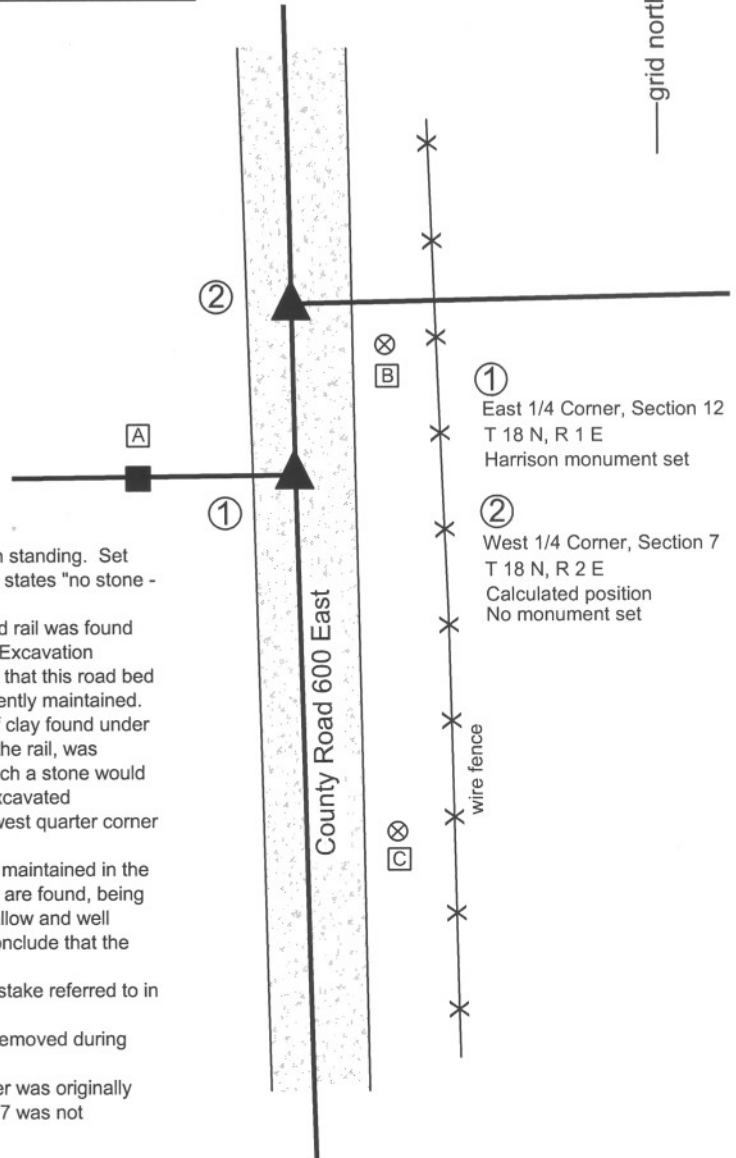
A BCS record of October 20, 1865 states "Reestablished from trees both standing. Set Rock 12,8,8 Beech stake under it." A BCS tied card dated August, 1970 states "no stone - set rail."

This corner was excavated on Jun 5, 2009. Prior to excavation a railroad rail was found on end, roughly flush with the top of the road, in the vicinity of corner 1. Excavation revealed no more specific evidence of the corner. Excavation did reveal that this road bed is extremely minimal in thickness. This is a county road but it is not currently maintained. Approximately 5 inches of gravel were found, below which is the layer of clay found under most roads in this area. An area 7 feet N-S by 7 feet E-W, centered on the rail, was excavated to well into the clay layer and certainly below the depth at which a stone would reasonably be expected to be found. Another hole of similar size was excavated approximately 17 feet north, in the vicinity of the calculated position for west quarter corner of section 7.

It is noted that although the road is not currently maintained, it has been maintained in the past. If the record stone were at the depth for which most corner stones are found, being at or slightly above the top of the clay layer, it would have been quite shallow and well within reach of the blade or teeth of a road grader. It is reasonable to conclude that the record stone was removed in the past, likely by a road grader. No evidence of the Beech stake referred to in the record was found.

The harrison monument was set in place of the railroad rail, which was removed during excavation.

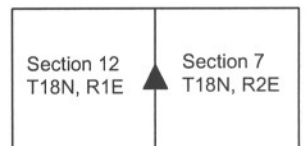
Only the east quarter corner of section 12 was monumented. This corner was originally established as a wood post in 1819. The west quarter corner of section 7 was not monumented by the original federal surveyors.



Kenneth E. Hedge
 Kenneth E. Hedge, County Surveyor

James S. Swift
 James S. Swift, IN LS 20200054
 July 14, 2010

Worth Township



SECTION CORNER RECORD

BOONE COUNTY SURVEYOR'S OFFICE

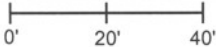
SE 150-700

State Plane grid coordinates NAD83 (NSRS 2007):
 North: 1738509.72 East: 3161906.36 (U.S. survey feet)

Type of monument: Harrison, 4" disk 'Section Corner'
 Depth: 4 inches below adjacent gravel road surface

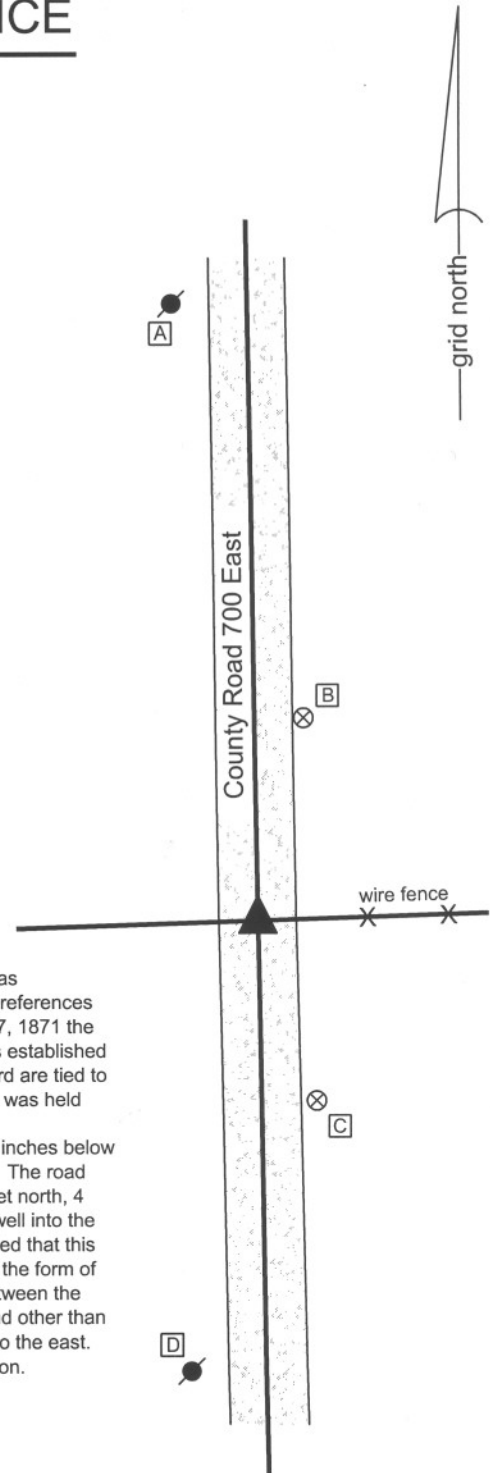
Indiana tie card references:
 IN02_T18NR2E07_44
 IN02_T18NR2E08_36

CORNER WITNESS DETAIL

SCALE 1" = 40'


- A - Mag nail set in S.E. side, power pole, 2.0' a.g., 128.4'
- B - Boone County witness mark, flush, 43.30'
- C - Boone County witness mark, flush, 39.42'
- D - Mag nail set in N.E. side power pole, 2.0' a.g., 93.0'

Boone County witness mark is a 3/8" diameter x 2' long rebar bearing a metal cap stamped "Boone County Witness Point."

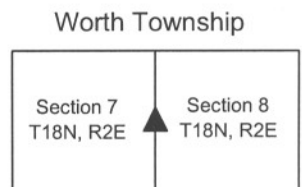


The Harrison monument was set in place of a railroad rail found. A BCS tie card dated July, 1970 states "no stone, set rail" and demonstrates that the corner was established in the approximate center of the county road in line with the fence to the east. No references were found for this corner in the BCS "Surveyor's Record." Notably, in a record of February 27, 1871 the section corners to the north and south were found established and an intermediate corner was established north of the subject quarter corner. The measurements to the intermediate corner in that record are tied to the section corners and the quarter corner is not mentioned. Hence, the mile long section line was held without regard to the quarter corner. This corner was excavated on June 5, 2009. Prior to excavation a railroad rail was found at 7 inches below grade, in line with the fence to the east. Excavation revealed no other evidence of the corner. The road bed in this vicinity is gravel approximately 8 inches thick. An area extending 4 feet south, 9 feet north, 4 feet east and 5 feet west of the railroad rail was excavated to a minimum depth of 16 inches, well into the clay and below the depth at which a stone might reasonably be expected to be found. It is noted that this area of excavation encompassed probable locations for the corner based on local evidence in the form of the fence to the east and remote evidence in the form of the calculated midpoint of the line between the section corners to the north and south. As noted, no physical evidence of the corner was found other than the rail, which is in agreement with the best available evidence, being the road and the fence to the east. The Harrison monument was set in the position of the rail, which was removed during excavation. This corner was originally established as a wood post in July, 1821.



Kenneth E. Hedge
 Kenneth E. Hedge, County Surveyor

James S. Swift
 James S. Swift, IN LS 20200054
 July 14, 2010



SECTION CORNER RECORD

SE 200-600

BOONE COUNTY SURVEYOR'S OFFICE

State Plane grid coordinates NAD83 (NSRS 2007):

North: 1735675.03 East: 3156486.41 (U.S. survey feet)

Type of monument: Harrison, 4" disk 'Section Corner'

Depth: One inch below adjacent road surface

Indiana tie card references:

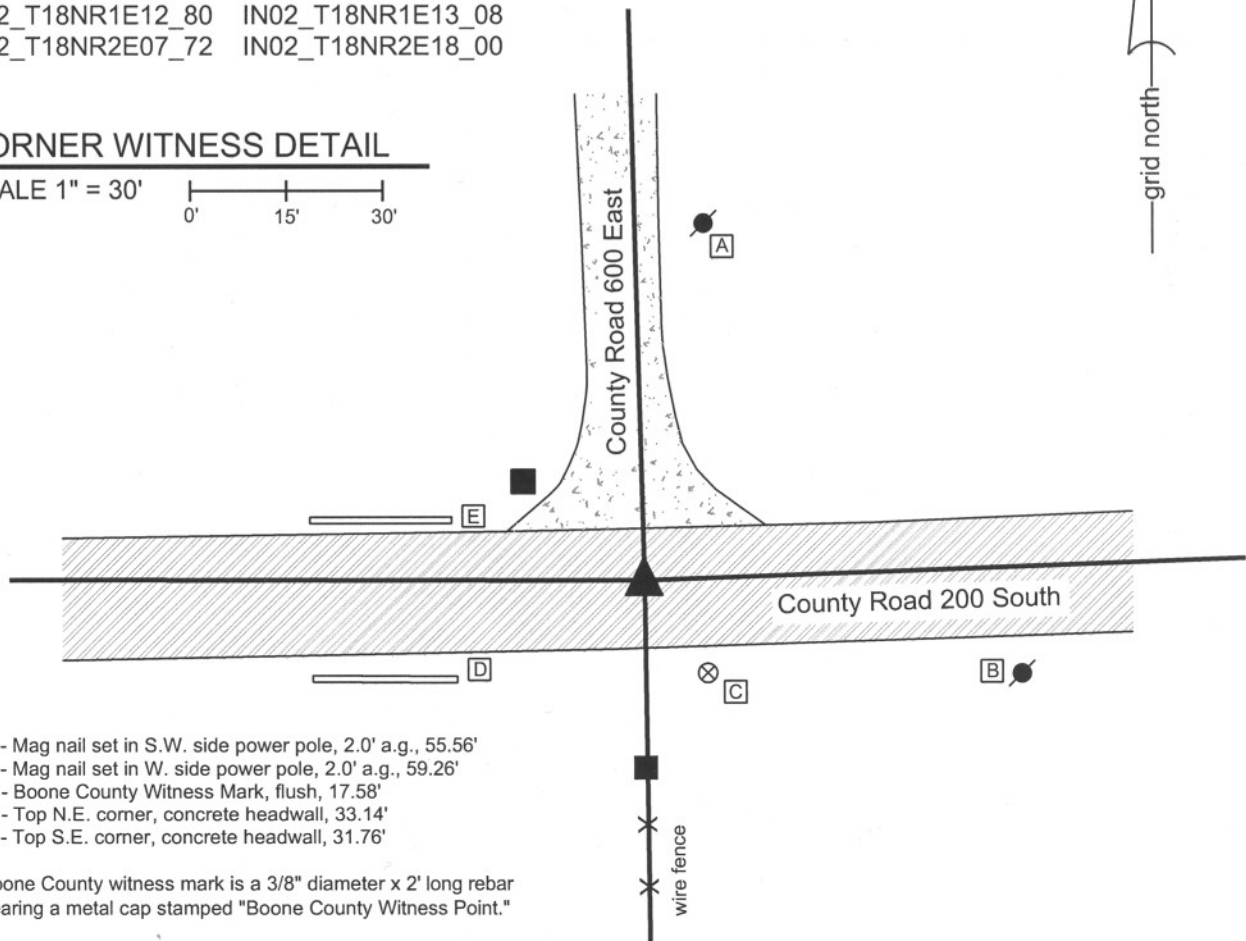
IN02_T18NR1E12_80 IN02_T18NR1E13_08

IN02_T18NR2E07_72 IN02_T18NR2E18_00

CORNER WITNESS DETAIL

SCALE 1" = 30'

0' 15' 30'



- A - Mag nail set in S.W. side power pole, 2.0' a.g., 55.56'
- B - Mag nail set in W. side power pole, 2.0' a.g., 59.26'
- C - Boone County Witness Mark, flush, 17.58'
- D - Top N.E. corner, concrete headwall, 33.14'
- E - Top S.E. corner, concrete headwall, 31.76'

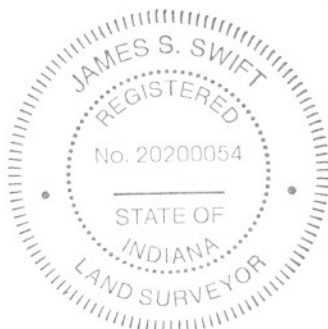
Boone County witness mark is a 3/8" diameter x 2' long rebar bearing a metal cap stamped "Boone County Witness Point."

The Harrison monument was set over the top, center of a stone found.

A BCS record of April 26, 1865 states "Reestablished from Oak tree stump. Set Rock 10.20.9 in Marked T..."

This corner was excavated on May 30, 2008. Prior to excavation no monuments were visible nor were any detected with a magnetic locator. Excavation centered on the approximate intersection of the centers of the two county roads yielded the record stone found at a depth of 14 inches below the road surface. The stone measures 10 inches NS by 9 inches EW and is 17 inches tall, set vertically, well embedded in the clay base layer below the road. No specific markings were observed on the stone. The stone may have been broken off at some point, as it is slightly shorter than the record height and does not bear the described markings. The Harrison monument was set directly over the top of the stone.

This corner was originally established as a wood post in 1819. No record offset was recorded as the closing corner is coincident with the standard corner.



Kenneth E. Hedge
Kenneth E. Hedge, County Surveyor

James S. Swift
James S. Swift, IN LS 20200054
March 11, 2009

Worth Township

Section 12 T18N, R1E	Section 7 T18N, R2E
Section 13 T18N, R1E	Section 18 T18N, R2E

PHOTOGRAPHIC DOCUMENTATION

Date of photography: May 30, 2008

Corner stone, view from West.

Note top of clay layer exposed and visible around stone.



Corner stone, view from South.



For details and documentation, refer to related sheet "Section Corner Record."

SECTION CORNER RECORD

SE 200-650

BOONE COUNTY SURVEYOR'S OFFICE

State Plane grid coordinates NAD83 (NSRS 2007):
North: 1735776.33 East: 3159300.17 (U.S. survey feet)

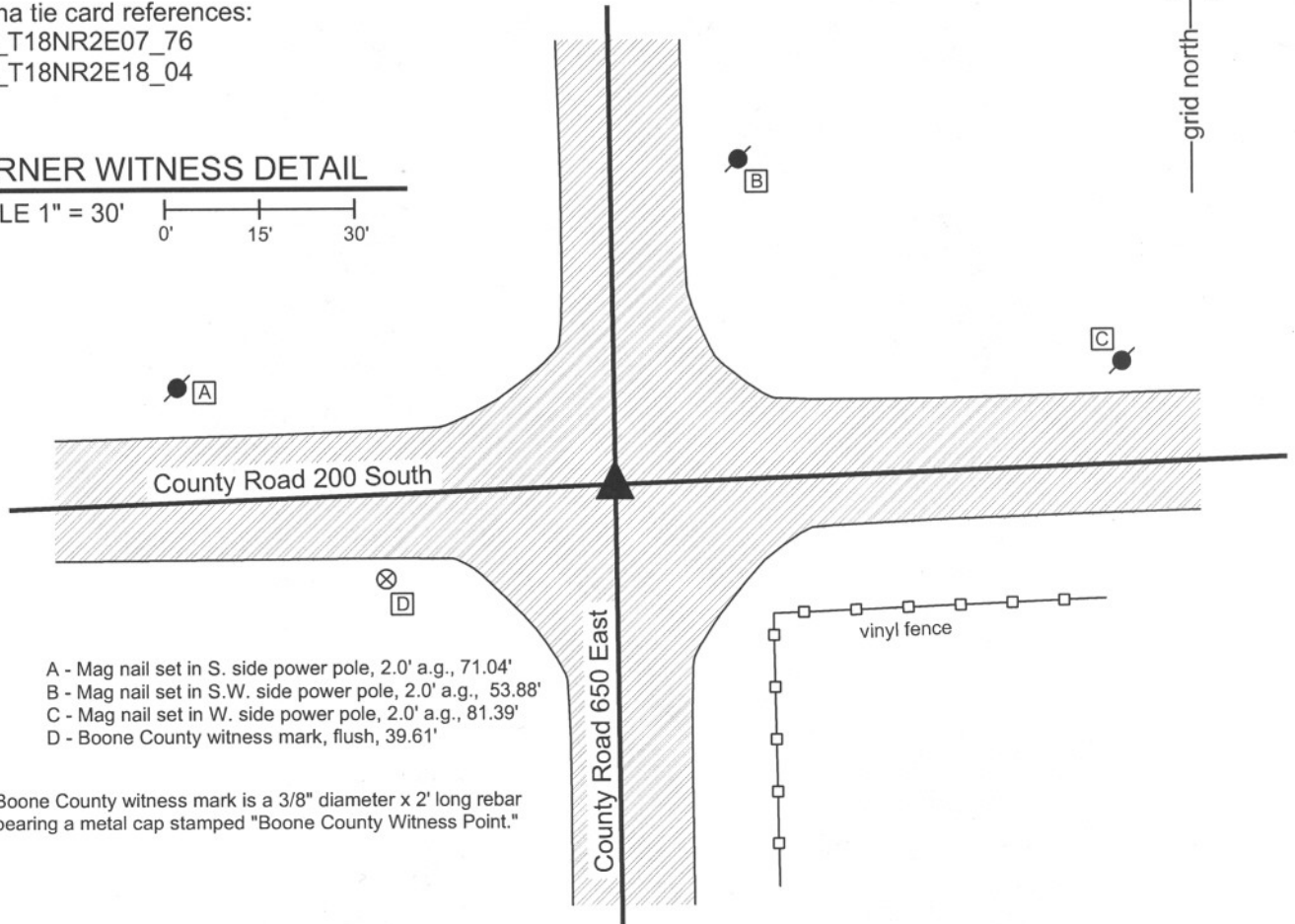
Type of monument: Harrison, 4" disk 'Section Corner'
Depth: One inch below adjacent road surface

Indiana tie card references:
IN02_T18NR2E07_76
IN02_T18NR2E18_04



CORNER WITNESS DETAIL

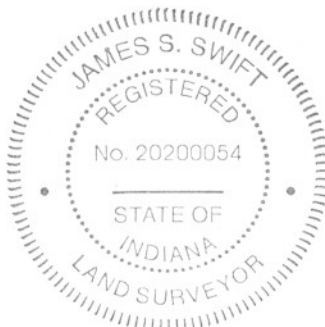
SCALE 1" = 30'
0' 15' 30'



- A - Mag nail set in S. side power pole, 2.0' a.g., 71.04'
- B - Mag nail set in S.W. side power pole, 2.0' a.g., 53.88'
- C - Mag nail set in W. side power pole, 2.0' a.g., 81.39'
- D - Boone County witness mark, flush, 39.61'

Boone County witness mark is a 3/8" diameter x 2' long rebar bearing a metal cap stamped "Boone County Witness Point."

The harrison monument was set over the etched "+" on the top of a stone found. A BCS record dated April 26, 1865 states "Re-established from rotten Hick stump. Set Rock 16.14 by 8 in. marked +." A BCS tie card dated August 17, 1967 states "no stone." This corner was excavated on June 6, 2008. Prior to excavation two mag nails were visible at the surface, adjacent to each other. Excavation exposed a railroad spike below the two mag nails. A railroad rail was found slightly lower than the railroad spike. The spike was situated against the northeast edge of the rail. Further excavation yielded the record stone at 30 inches deep. The stone is fully embedded in the clay. With the top 8 inches of the stone exposed, it measures 8 inches EW by 12 inches NS and has a clearly identifiable "+" on the top center. An old post was found lying horizontally, embedded in the clay, extending east from the stone. No explanation is offered with respect to the post. The stone appeared to be stable and undisturbed. The mag nails were 1.5 feet north and 0.6 feet east of the etched "+" on the stone. The harrison was set directly over the etched + on the top, center of the stone. No specific source is documented for the railroad rail, though it was likely set at the time of the creation of the 1967 tie card, which was clearly erroneous in the statement "no stone." This corner was originally established as a wood post in July, 1821.

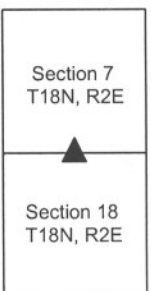


Kenneth E. Hedge
Kenneth E. Hedge, County Surveyor

James S. Swift
James S. Swift, IN LS 20200054

March 11, 2009

Worth Twp



PHOTOGRAPHIC DOCUMENTATION

Date of photography: June 6, 2008

Corner stone - view from South.



Corner stone - overhead view from West.



Same picture as above with etched "+" enhance for ease of visual detection.



View from South showing County Road 650 East to the North.



Overhead view from West.



For details and documentation, refer to related sheet "Section Corner Record."

SECTION CORNER RECORD

SE 200-700

BOONE COUNTY SURVEYOR'S OFFICE

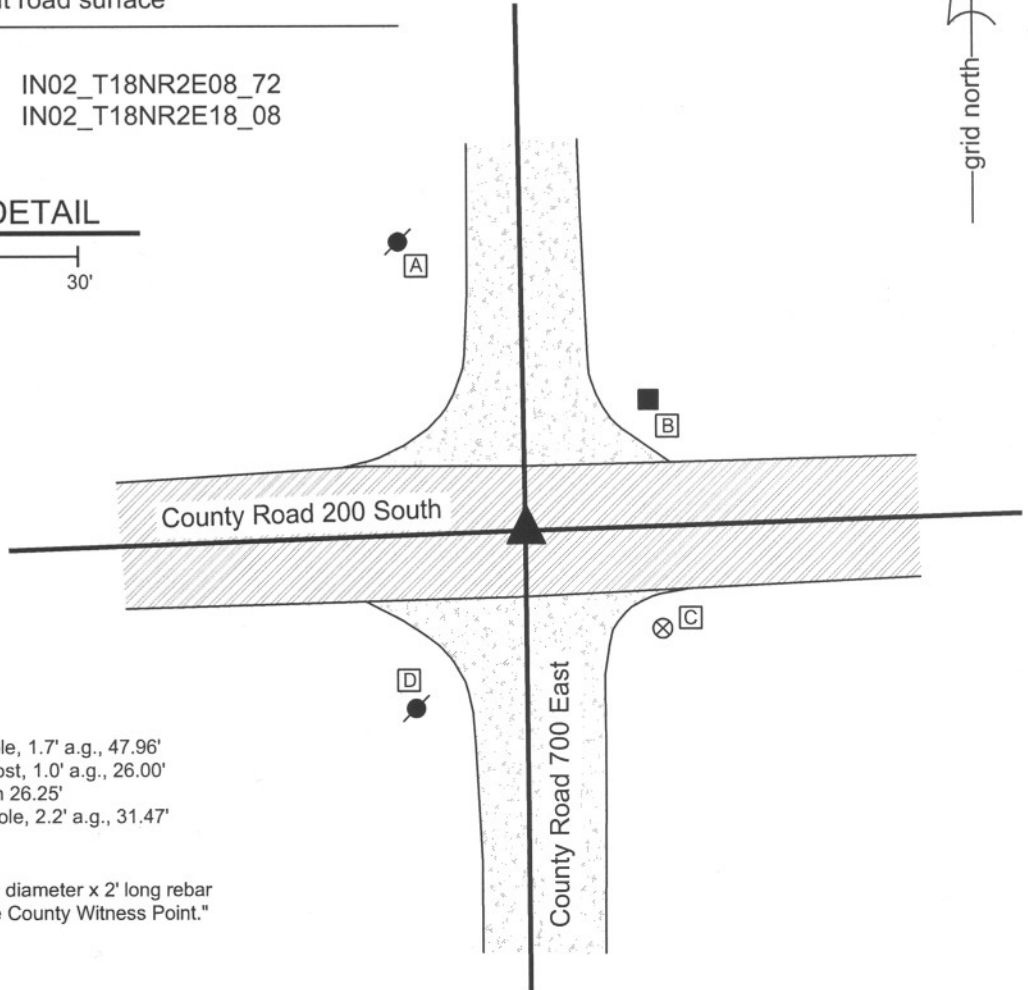
State Plane grid coordinates NAD83 (NSRS 2007):
North: 1735870.87 East: 3161948.65 (U.S. survey feet)

Type of monument: Harrison, 4" disk 'Section Corner'
Depth: 1 inch below adjacent road surface

Indiana tie card references:
IN02_T18NR2E07_80 IN02_T18NR2E08_72
IN02_T18NR2E17_00 IN02_T18NR2E18_08

CORNER WITNESS DETAIL

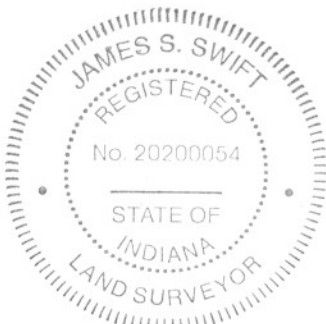
SCALE 1" = 30'
0' 15' 30'



- A - Mag Nail set in S.E. side powerpole, 1.7' a.g., 47.96'
- B - Mag Nail set in S.W. side wood post, 1.0' a.g., 26.00'
- C - Boone County witness mark, flush 26.25'
- D - Mag Nail set in N.E. side power pole, 2.2' a.g., 31.47'

Boone County witness mark is a 3/8" diameter x 2' long rebar bearing a metal cap stamped "Boone County Witness Point."

The harrison monument was set in place of a railroad rail found. A BCS record of August 17, 1869 states "found from stump of Oak and reestablished drove stake under a rock 16,13.6 +..." A BCS tie card of July 1970 states "no stone, set rail." The railroad rail was found 8 inches below grade in the approximate center of County Road 200 South, slightly west of the apparent physical intersection of said road with County Road 700 East. A four foot N-S by 7 foot E-W area, centered on the rail in the N-S dimension and extended to 5.5 feet east of the rail, was excavated on April 4, 2008. The record stone was not found, nor was any other monument found. Signs of significant disturbance were detected in the gravel layer at the bottom of the road. Excavation was performed to a depth of 2.5 feet and the main layer of clay begins at approximately 2 feet. All sides of the hole were probed every 4 to 6 inches for a minimum of 2 foot penetration into the surrounding area. The railroad rail was replaced with a harrison monument. This corner was originally established as a wood post in July 1821.



Kenneth E. Hedge
Kenneth E. Hedge, County Surveyor

James S. Swift
James S. Swift, IN LS 20200054

March 11, 2009

Worth Township

Section 7 T18N, R2E	Section 8 T18N, R2E
Section 18 T18N, R2E	Section 17 T18N, R2E