

# SECTION CORNER RECORD

SE 700-600

## BOONE COUNTY SURVEYOR'S OFFICE

State Plane grid coordinates NAD83 (NSRS 2007):

North: 1709230.31 East: 3156831.01 (U.S. survey feet) (standard corner)

North: 1709199.97 East: 3156831.63 (U.S. survey feet) (closing corner)

Type of monument: Harrison, 4" disk 'Section Corner'

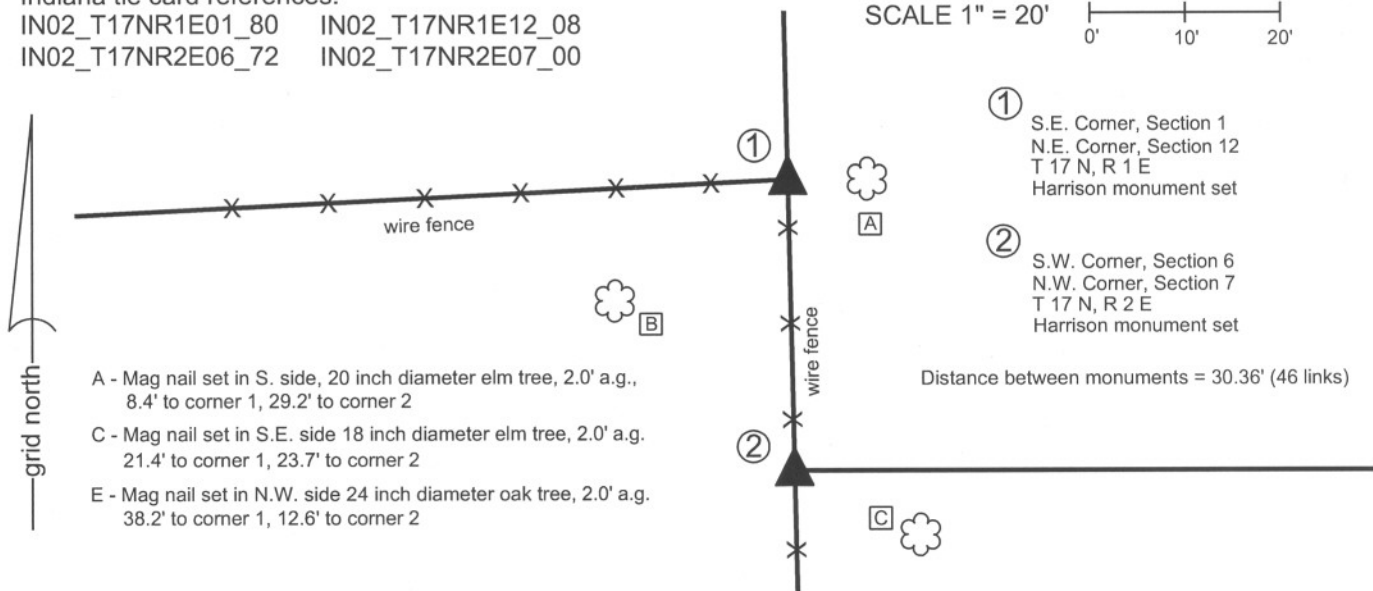
Depth: 3 inches above adjoining ground.

Indiana tie card references:

IN02\_T17NR1E01\_80 IN02\_T17NR1E12\_08  
 IN02\_T17NR2E06\_72 IN02\_T17NR2E07\_00

### CORNER WITNESS DETAIL

SCALE 1" = 20'

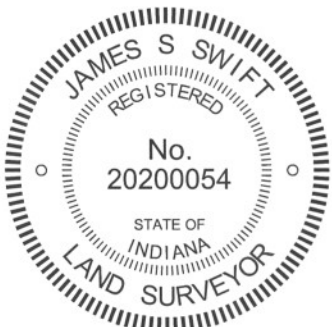


- ① S.E. Corner, Section 1  
N.E. Corner, Section 12  
T 17 N, R 1 E  
Harrison monument set
- ② S.W. Corner, Section 6  
N.W. Corner, Section 7  
T 17 N, R 2 E  
Harrison monument set

Distance between monuments = 30.36' (46 links)

- A - Mag nail set in S. side, 20 inch diameter elm tree, 2.0' a.g.,  
8.4' to corner 1, 29.2' to corner 2
- C - Mag nail set in S.E. side 18 inch diameter elm tree, 2.0' a.g.  
21.4' to corner 1, 23.7' to corner 2
- E - Mag nail set in N.W. side 24 inch diameter oak tree, 2.0' a.g.  
38.2' to corner 1, 12.6' to corner 2

The harrison monument at corner 1 was set in place of a rebar found and over the base of an old wood corner post. The harrison monument at corner 2 was set on the range line connecting corner 1 and the standard corner approximately 1/2 mile south at the record closing distance of 46 links from corner 1. No specific descriptions of this corner were found in the BCS Surveyor's Record. Corner 1 is mentioned as the terminal point for measurements in records from 1836 and 1901. Corner 2 is mentioned as the terminal point for a measurement in a record of 1865. A tie card dated January 1990 on file in this office, believed to have been provided by the Indiana Department of Transportation, shows corner 1 as a 1/2 inch rebar slightly east of a wood corner fence post. This corner was excavated on September 1, 2009. Prior to excavation, corner 1 appeared to be marked by a wood corner post with fence to the south and west and a rebar near the northeast corner of the post, per the 1990 tie card. Corner 2 appeared to be marked by two rebars approximately 0.7 of a foot apart and a stone at several inches deep, exposed in a hole. Excavation of the standard corner, being corner 1, revealed several rocks around the post, all of which appeared to be brace rocks for the post and none of which were positively identifiable as section corner stones. Excavation along the east edge of the post did confirm that the post was leaning slightly towards the west. At approximately 2.5 feet deep, the post is directly below the rebar. As the post is leaning towards the west, the rebar set on the east side of the post was directly over the base of the post as situated in the ground. It is not known whether this was intentional or not in the setting of the rebar, but given the common position of the rebar and the bottom of the post, this position was held as marking the corner and a harrison monument was set at the position of the rebar, directly over the base of the post and slightly east of the part of the post which is above ground. Excavation at corner 2 revealed remnants of an old wood corner post in addition to the two rebars and rock found. The rock which was visible in a hole prior to excavation proved to be along the southeast edge of the old corner post. The rock is not mentioned in the BCS Surveyor's record and did not appear to be a section corner stone, so much as a brace rock. The position of the corner was calculated to be at the original closing distance of 46 links (30.36 feet) south of corner 1 on the line connecting corner 1 with the standard corner approximately 1/2 mile south (See corner SE-750-600). This position fell close to the northwest edge of the old wood corner post. One of the rebars, bearing a metal cap stamped "Carl Anderson, Prof. Engr" was 0.9 foot south and 0.4 foot west of the corner as so established. The other rebar, stamped "American Consulting Engrs, Indpls" was 0.2 foot south and 0.6 foot west of the corner. This variation reflects the approximate difference between the rebar and visible portion of the post at corner 1, as discussed above. The center of the remnants of the old wood post are 1 foot south and 0.5 foot east of the calculated corner. A survey recorded in Survey Book 6, pages 66-67 (Boone County Recorder), by American Consulting, Inc. holds corner 1 as the wood corner post (presumably the portion visible above ground) and does not discuss corner 2, but may be the source of the northerly of the two capped rebars. A survey recorded in Survey Book 6, pages 68-69 by Major Engineering and Land Surveying, Inc. shows corner 2 as the A.C.E. rebar found. A survey recorded in Survey Book 7, page 7 by the Schneider Corporation shows corner 2 as being calculated from the iron pin found at corner 1, by the same method employed herein. A harrison monument was set at the position of the corner calculated with respect to corner 1 and the record closing distance of 46 links, as discussed above.



*Kenneth E. Hedge*  
 Kenneth E. Hedge, County Surveyor

*James S. Swift*  
 James S. Swift, IN LS 20200054  
 March 30, 2012

Perry Twp Eagle Twp

Section 01 T17N, R1E	Section 6 T17N, R2E
Section 12 T17N, R1E	Section 7 T17N, R2E

# SECTION CORNER RECORD

SE 700-650

## BOONE COUNTY SURVEYOR'S OFFICE

State Plane grid coordinates NAD83 (NSRS 2007):  
North: 1709199.91 East: 3159782.58 (U.S. survey feet)

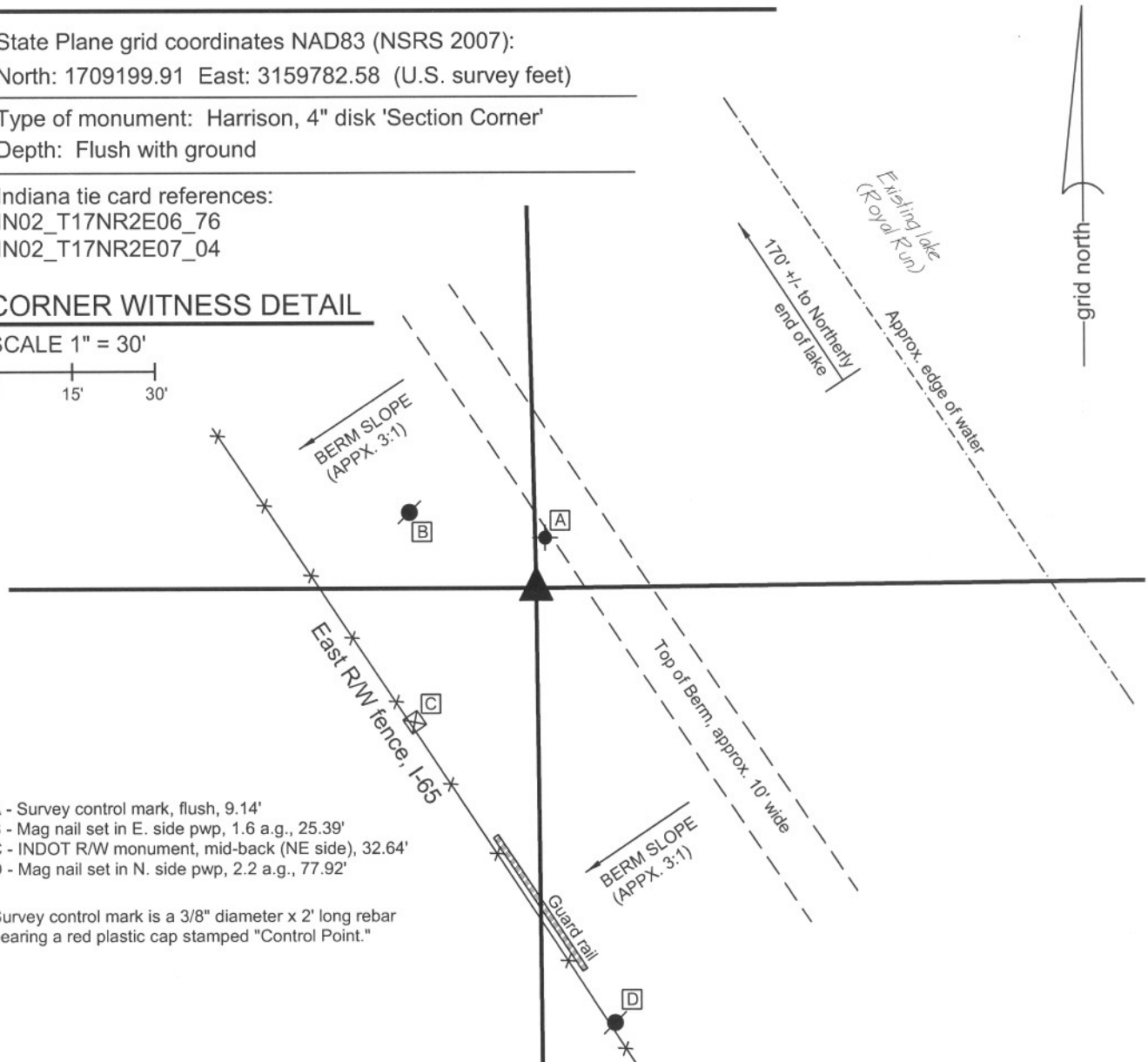
Type of monument: Harrison, 4" disk 'Section Corner'  
Depth: Flush with ground

Indiana tie card references:  
IN02\_T17NR2E06\_76  
IN02\_T17NR2E07\_04

### CORNER WITNESS DETAIL

SCALE 1" = 30'

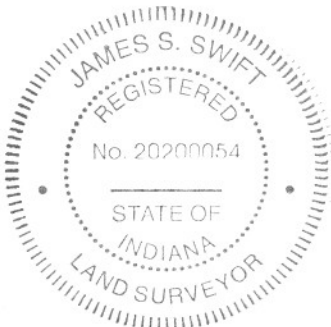
0' 15' 30'



- A - Survey control mark, flush, 9.14'
- B - Mag nail set in E. side pwp, 1.6 a.g., 25.39'
- C - INDOT R/W monument, mid-back (NE side), 32.64'
- D - Mag nail set in N. side pwp, 2.2 a.g., 77.92'

Survey control mark is a 3/8" diameter x 2' long rebar bearing a red plastic cap stamped "Control Point."

A previous Boone County tie card, dated July 11, 1969, states "no stone" and demonstrates a corner with two ties. It is known that the procedure of field crews from this office at that time was to set a section of a railroad rail on end at the position the crew determined to be the most likely position of the corner. The plat of Wimbledon at Royal Run, recorded in Plat Book 10, page 38, shows a railroad rail found and held as the corner. Earthwork associated with the construction of Wimbledon at Royal Run has caused a large earthen berm to be placed in this vicinity, parallel with Interstate 65. The rail may still be present but is under approximately eight feet of fill dirt. The position of the rail was calculated relative to center line control found for the adjoining neighborhoods in Wimbledon at Royal Run. The Harrison monument was set at the calculated position. Uncertainties of approximately 0.1' in all directions are associated with the relative location of the centerline control and the calculated corner. This corner was originally established in July, 1821.



*Kenneth E. Hedge*  
Kenneth E. Hedge, County Surveyor

*J. S. Swift*  
James S. Swift, IN LS 20200054  
December 21, 2007

Section 6 T17N, R2E
▲
Section 7 T17N, R2E

Eagle Township

# SECTION CORNER RECORD

SE 700-700

## BOONE COUNTY SURVEYOR'S OFFICE

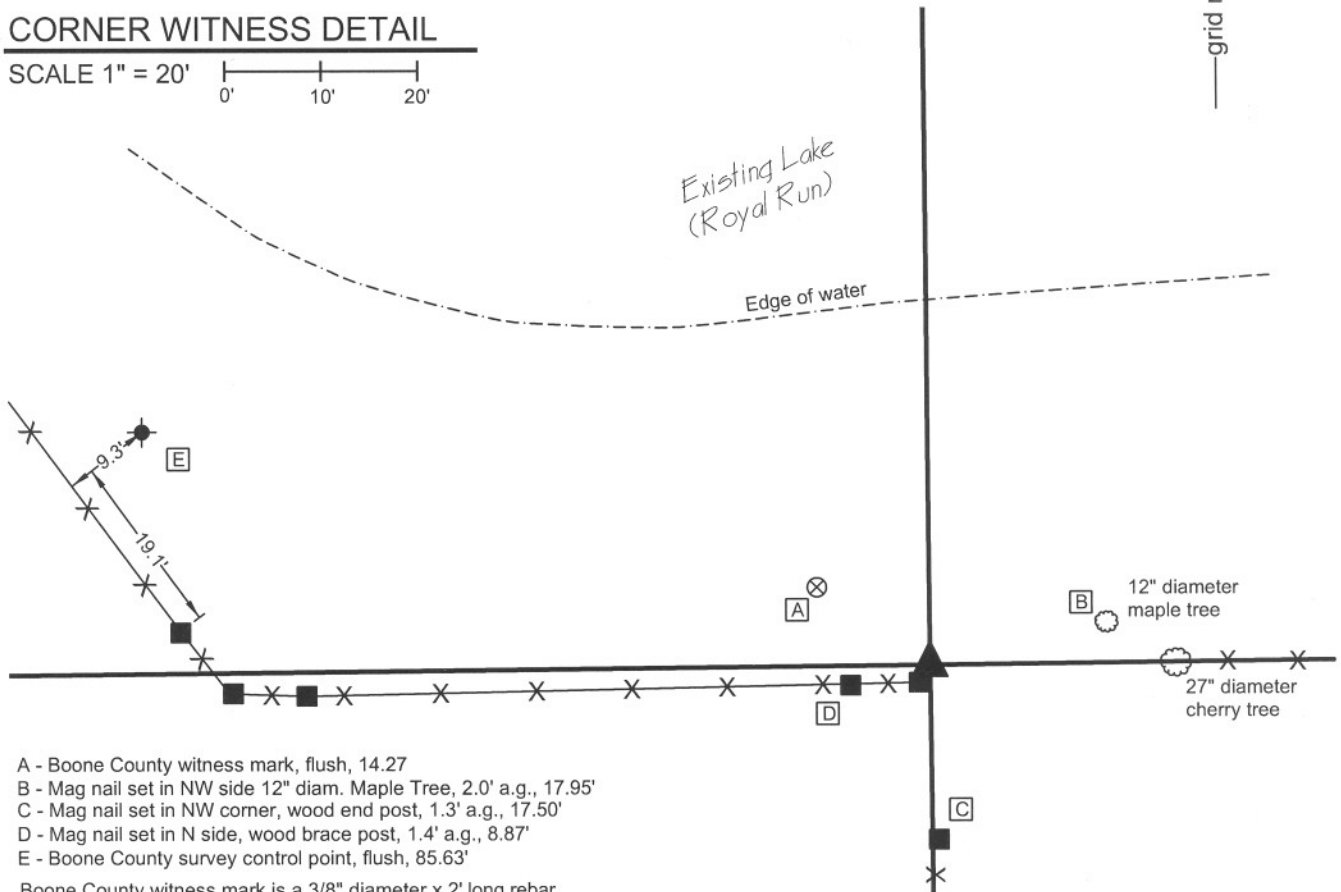
State Plane grid coordinates NAD83 (NSRS 2007):  
 North: 1709226.0 East: 3162425.3 (U.S. survey feet)

Type of monument: Stone, (7" x 4" top dimensions)  
 Depth: top at 0.2' above grade

Indiana tie card references:  
 IN02\_T17NR2E05\_72 IN02\_T17NR2E06\_80  
 IN02\_T17NR2E07\_08 IN02\_T17NR2E08\_00

### CORNER WITNESS DETAIL

SCALE 1" = 20'



- A - Boone County witness mark, flush, 14.27
- B - Mag nail set in NW side 12" diam. Maple Tree, 2.0' a.g., 17.95'
- C - Mag nail set in NW corner, wood end post, 1.3' a.g., 17.50'
- D - Mag nail set in N side, wood brace post, 1.4' a.g., 8.87'
- E - Boone County survey control point, flush, 85.63'

Boone County witness mark is a 3/8" diameter x 2' long rebar bearing a metal cap stamped "Boone County Witness Point."

Survey control mark is a 3/8" diameter x 2' long rebar bearing a red plastic cap stamped "Control Point."

The stone found measures approximately 7 inches by 4 inches at the top with no particular markings. This stone is referenced on a tie card dated September 4, 1976 and has been held for numerous surveys in this vicinity. A BCS record dated November 24, 1865 references the corner as "a stone that was set" indicating that the stone had been established prior to this date, but does not contain a description of the stone. The point held as the corner is the approximate midpoint of the top of the stone. This corner was originally established in July, 1821.



*Kenneth E. Hedge*  
 Kenneth E. Hedge, County Surveyor

*J. S. Swift*  
 James S. Swift, IN LS 20200054  
 December 21, 2007

Eagle Township

Section 6 T17N, R2E	Section 5 T17N, R2E
Section 7 T17N, R2E	Section 8 T17N, R2E

PHOTOGRAPHIC DOCUMENTATION

Date of photography: 10/05/2007

Photograph of existing stone. The top of the stone is 7 inches by 4 inches and protrudes approximately 3 inches above the surface of the ground.



Photograph of stone and two corner posts in immediate proximity. Another corner post, being the terminus of an old north-south fence is 17.5 feet south of stone.






# SECTION CORNER RECORD

# SE 750-600

## BOONE COUNTY SURVEYOR'S OFFICE

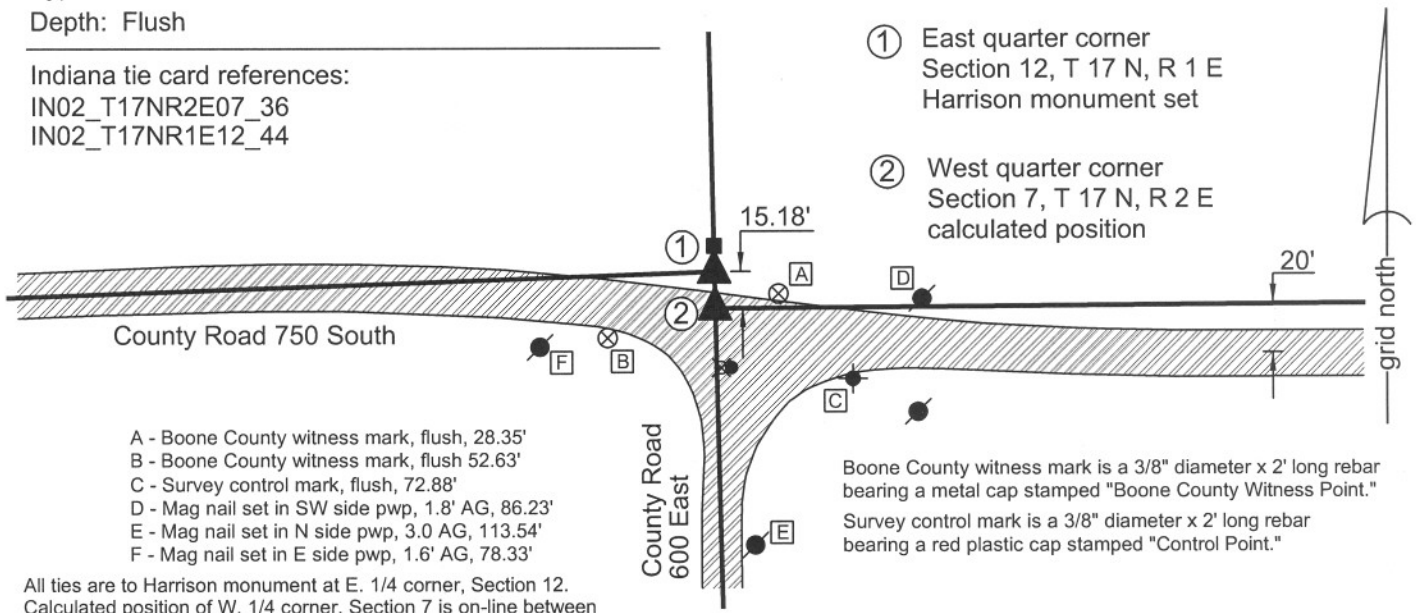
State Plane grid coordinates NAD83 (NSRS 2007):  
North: 1706569.79 East: 3156887.70 (U.S. survey feet)

### CORNER WITNESS DETAIL

SCALE 1" = 80' 

Type of monument: Harrison, 4" disk 'Section Corner'  
Depth: Flush

Indiana tie card references:  
IN02\_T17NR2E07\_36  
IN02\_T17NR1E12\_44



- A - Boone County witness mark, flush, 28.35'
- B - Boone County witness mark, flush 52.63'
- C - Survey control mark, flush, 72.88'
- D - Mag nail set in SW side pwp, 1.8' AG, 86.23'
- E - Mag nail set in N side pwp, 3.0 AG, 113.54'
- F - Mag nail set in E side pwp, 1.6' AG, 78.33'

- ① East quarter corner  
Section 12, T 17 N, R 1 E  
Harrison monument set
- ② West quarter corner  
Section 7, T 17 N, R 2 E  
calculated position

Boone County witness mark is a 3/8" diameter x 2' long rebar bearing a metal cap stamped "Boone County Witness Point."  
Survey control mark is a 3/8" diameter x 2' long rebar bearing a red plastic cap stamped "Control Point."

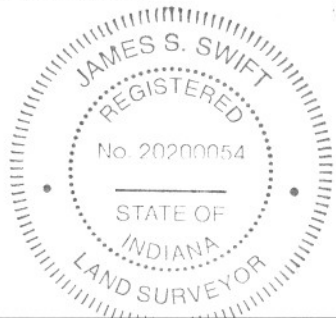
All ties are to Harrison monument at E. 1/4 corner, Section 12.  
Calculated position of W. 1/4 corner, Section 7 is on-line between  
E. 1/4 corner, Section 12 and S.E. corner, Section 12 (Harrison monument)

The Harrison monument was set in place of a 1/2 inch rebar found. The original east quarter corner of section 12 was a wood post set in 1819. A BCS record dated June 28, 1864 states that "an old stake in pond found from Ash" marks this corner. On the same day, the same crew found a stone at the west quarter corner and set stones at the center of section and the southeast corner, west half, northeast quarter. The stone at the center of section was found and replaced with a railroad rail in 1971. The stone at the west quarter corner was found and monumented with a Harrison monument in 2007. It is noted that the railroad rail at the center of section and a railroad spike at or near the southeast corner, west half, northeast quarter, fall within 6 inches of a straight line connecting the stone at the west quarter corner and the 1/2 inch rebar at the east quarter corner. It is also noted that the aforementioned straight line runs coincident with the approximate center of County Road 750 South from the west quarter corner to a point slightly west of the east quarter corner. It is further noted that the rebar falls on the line connecting a stone and Harrison at the southeast corner of section 12 with the old fence end post immediately north of the rebar. The origin of the rebar is not known, but its position fits well with the available evidence and was held as marking the corner.

With respect to the west quarter corner of section 7, no original monument was set, as this is a closing quarter corner. Recent private surveys have held the approximate center of County Road 750 South, bearing east from the corner, as marking the east-west half-section line. A rebar and mag nail which are approximately 40 feet south of the previously discussed 1/2 inch rebar represent recent interpretations of this corner. However, information contained in Boone County Road Record 8, page 37, June, 1892, clearly states that the Lebanon, Fayette and Royalton Free Gravel Road (subsequently designated as County Road 750 South), extending east from the range line, was constructed on a center line 20 feet south of and parallel with the east-west half-section line and that portion of the road west of the range line was constructed on a centerline coincident with the east-west half section line through section 12. Study of old Boone County atlases indicates that no road existed through the center of section 7 prior to the construction of the Lebanon, Fayette and Royalton Free Gravel Road.

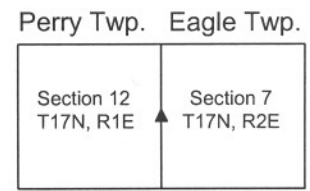
Establishing the west quarter corner of section 12 relative to the original plat and the record closing offsets to the north and south yields several feet of uncertainty. In creating the original plats, the practice typically was followed to treat the closing distance at the quarter corner along a range line as being the average of the closing distances to the north and south and calculating the record acreage of the west half of the closing quarter sections with respect to this average distance. Analysis of the original plat of Township 17 North, Range 2 East, indicates that this practice was followed in section 18. In section 7, however, the record acreages appear to have been calculated as though the closing offset at the north side of the section is 46 links north of the standard corner, rather than 46 links south of the standard corner. The result of this is that the west halves of the northwest and southwest quarters of section 7 are represented as being larger than was possible, given the dimensions of the section. Reducing the record acreages to fit that which was possible, and calculating the offset with respect to these reduced acreages yields a closing offset of 19 links, rather than the average dimension of 23 links. It is not clear that this was the intention of the person who made the plat. Hence, the average closing offset was held for the calculation of the corner shown on this sheet. It is noted that an uncertainty of approximately 4 links (2.6 feet) is introduced with respect to the location of the west quarter corner of section 7.

It is observed that holding the average closing of 23 links (15.18 feet) at the west quarter corner, the calculated corner fits well with the location of County Road 750 East extending to the east, treating the road as being 20 feet south of the east-west half quarter section line, per the original description of the road contained in Road Record 8, page 37.



*Kenneth E. Hedge*  
Kenneth E. Hedge, County Surveyor

*J. S. Swift*  
James S. Swift, IN LS 20200054  
December 21, 2007



# SECTION CORNER RECORD

SE 750-700

## BOONE COUNTY SURVEYOR'S OFFICE

State Plane grid coordinates NAD83 (NSRS 2007):

North: 1706586.53 East: 3162438.53 (U.S. survey feet)

Type of monument: 5/8 inch rebar with metal cap stamped 'Boone County Surveyor'

Depth: flush with adjacent ground.

Indiana tie card references:

IN02\_T17NR2E07\_44

IN02\_T17NR2E08\_36

### CORNER WITNESS DETAIL

SCALE 1" = 60'



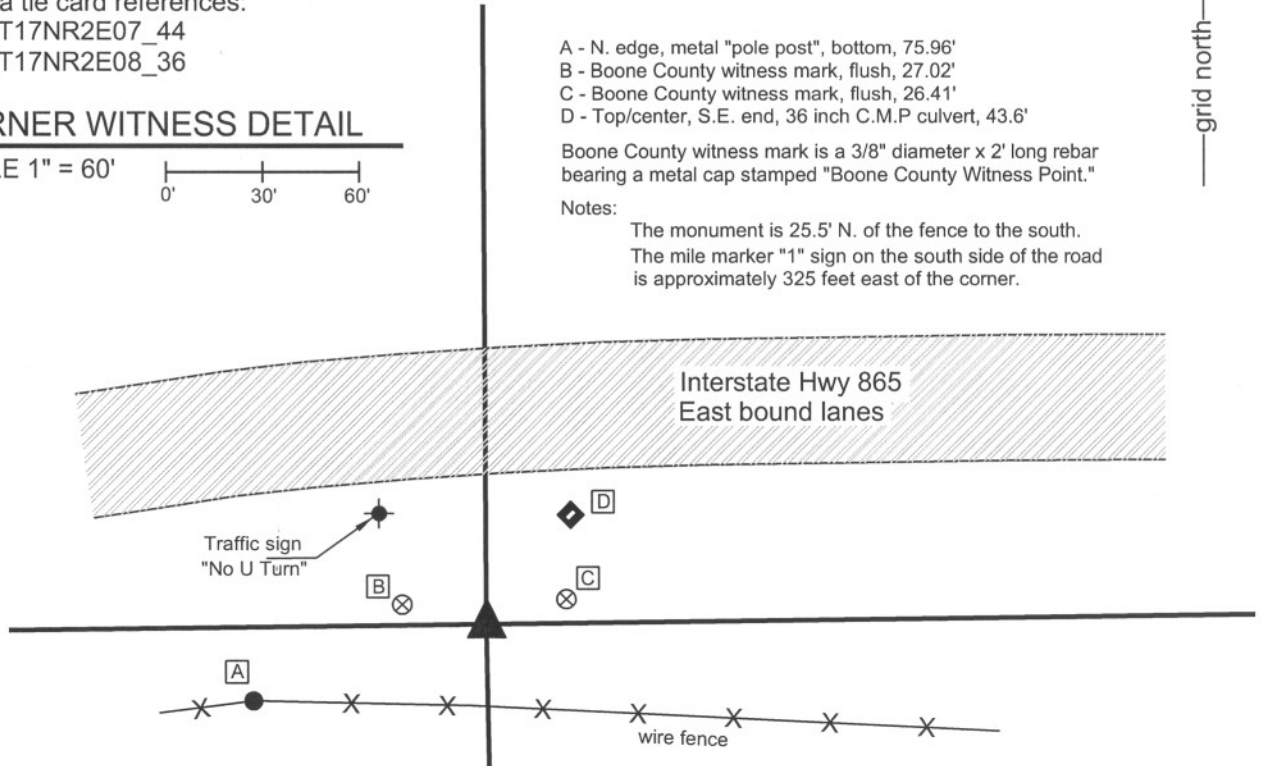
- A - N. edge, metal "pole post", bottom, 75.96'
- B - Boone County witness mark, flush, 27.02'
- C - Boone County witness mark, flush, 26.41'
- D - Top/center, S.E. end, 36 inch C.M.P culvert, 43.6'

Boone County witness mark is a 3/8" diameter x 2' long rebar bearing a metal cap stamped "Boone County Witness Point."

Notes:

The monument is 25.5' N. of the fence to the south.

The mile marker "1" sign on the south side of the road is approximately 325 feet east of the corner.



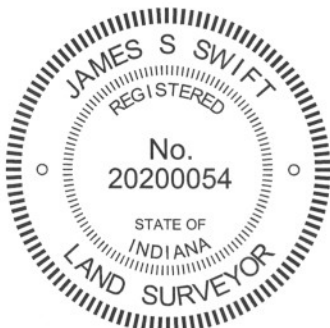
The rebar was set at a calculated position as shown on the plans for I-465, now called I-865.

This corner is shown as the terminal points for measurements in BCS records dated 1837. No specific descriptions of the corner are found in this or subsequent records. No recent tie cards were found referencing the corner.

The corner is shown on the plans for Interstate I-465 (now called I-865), Indiana State Highway Commission project I-465-4 (124) 135, fiscal year 1965, approved by the Chief Engineer of the Indiana State Highway Commission on January 7, 1966. The corner is shown as being at station 138+81, 115' right "Approx. 1/4 Sec. Cor. no stone found." It is not known why this specific location was held, as evidence of a post or fence is not shown on the plans and what evidence may have existed when the plans were made is no longer present due to the removal of evidence, if any, by the construction of the adjoining roadway and associated earthwork. However, the position of the corner fits well with fence evidence to the south and no better evidence of the corner has been found. Hence the position of the corner as shown on the plans was held. The corner was established by holding centerline control shown on the plans. The type C monument found at station 127+05.7, which represents the beginning of the project and which is also the point where the extended design center of I-865 intersects the center of Interstate I-65, was held fixed. The centerline was oriented towards a type C monument found at Station 194+91.5, (P.I.). Both of these monuments are believed to date from the original construction of the highway.

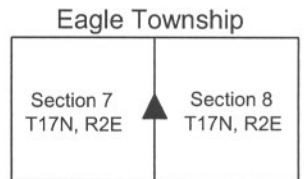
Numerous other centerline control monuments were found and checked. Variations of approximately 1 foot in all directions may be attributed to the relative positions of the found monumentation and stationing shown on the plans. A 5/8 inch diameter rebar, 36 inches long with a metal cap stamped 'Boone County Surveyor' was set flush with the existing ground at the position computed from the plans.

This corner was originally established as a wood post in 1821.



*Kenneth E. Hedge*  
 Kenneth E. Hedge, County Surveyor

*James S. Swift*  
 James S. Swift, IN LS 20200054  
 July 25, 2011



# SECTION CORNER RECORD

SE 800-600

## BOONE COUNTY SURVEYOR'S OFFICE

State Plane grid coordinates NAD83 (NSRS 2007):

North: 1703918.22 East: 3156949.11 (U.S. survey feet)

Type of monument: Harrison, 4" disk 'Section Corner'

Depth: Flush with road surface

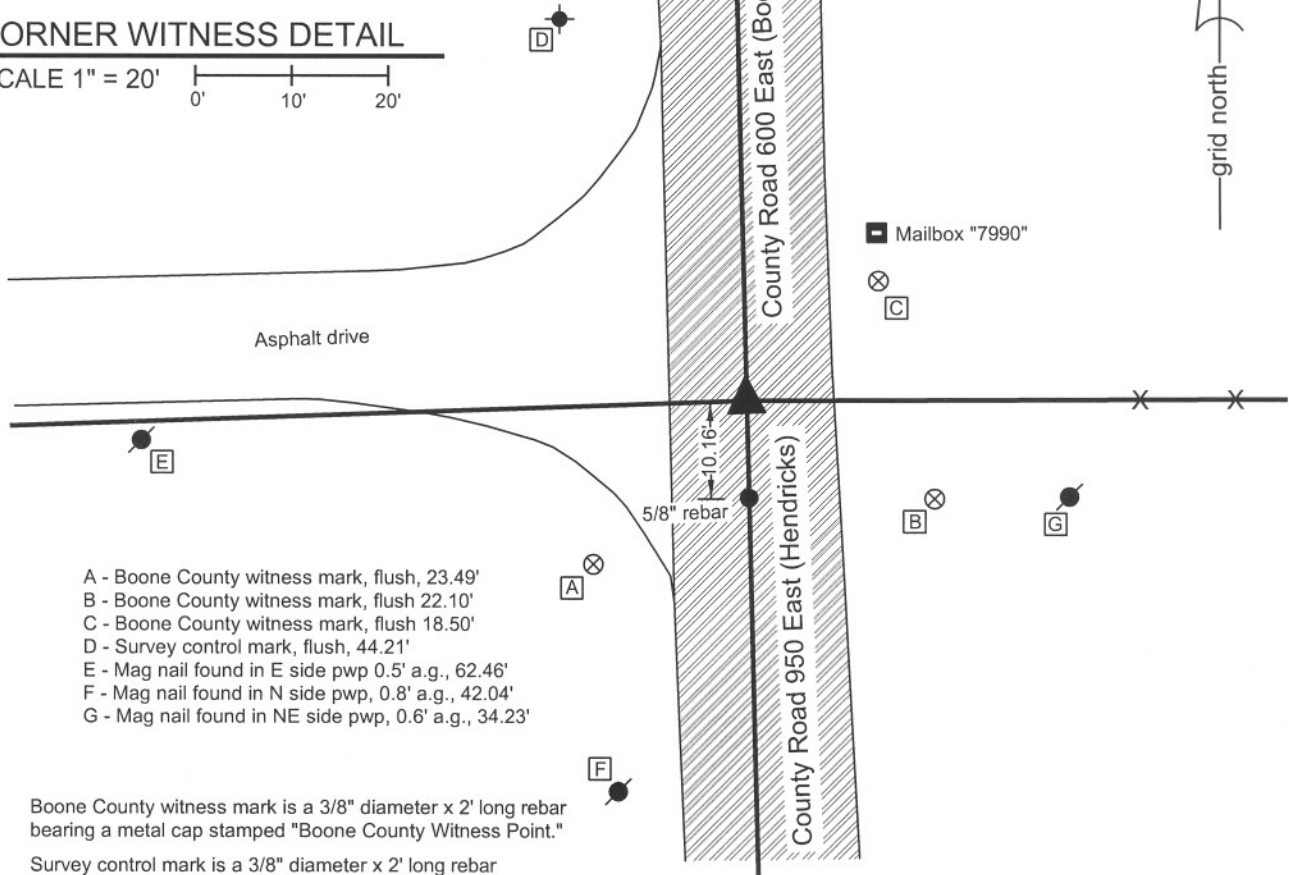
Indiana tie card references:

IN02\_T17NR1E12\_80

IN02\_T17NR2E07\_72

### CORNER WITNESS DETAIL

SCALE 1" = 20'

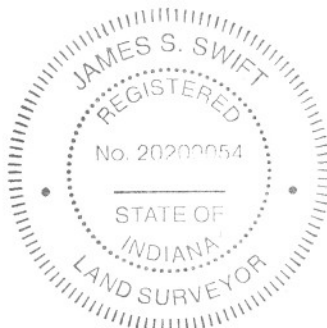


- A - Boone County witness mark, flush, 23.49'
- B - Boone County witness mark, flush 22.10'
- C - Boone County witness mark, flush 18.50'
- D - Survey control mark, flush, 44.21'
- E - Mag nail found in E side pwp 0.5' a.g., 62.46'
- F - Mag nail found in N side pwp, 0.8' a.g., 42.04'
- G - Mag nail found in NE side pwp, 0.6' a.g., 34.23'

Boone County witness mark is a 3/8" diameter x 2' long rebar bearing a metal cap stamped "Boone County Witness Point."

Survey control mark is a 3/8" diameter x 2' long rebar bearing a red plastic cap stamped "Control Point."

The Harrison monument was set directly over the high point of a granite stone found and accepted as marking the corner. This stone is referenced by the Office of the Hendricks County Surveyor as being found 9/20/1966. No other record of the stone was found. A piece of railroad rail on end was found against the stone on the southeast side, 4" below grade and a capped 5/8" rebar (Dodge SO 288) was found flush with the surface of the road, 0.26' S and 0.68' E of the corner. The rail was left in place and the rebar was removed. Another 5/8" rebar found 10.16' S. of the corner was left in place. The original monument was a post set in 1819. The record closing offset is 0 links, "Intersected West line at post."



*Kenneth E. Hedge*  
 Kenneth E. Hedge, County Surveyor

*J. S. Swift*  
 James S. Swift, IN LS 20200054  
 December 21, 2007

Eagle Township  
 Pery Township  
 Boone County

Brown Township  
 Hendricks County

Section 12 T17N, R1E	Section 7 T17N, R2E
Section 13 T17N, R1E	Section 18 T17N, R2E



PHOTOGRAPHIC DOCUMENTATION

Date of photography: 08/29/2007

Photograph showing found stone, railroad rail and 5/8 inch rebar. The rebar and rail are on the southeast edge of the stone. The stone is 11 inches by 11 inches near the top and 14 inches below the surface of the road. The Harrison monument was set over the approximate top, center point of the stone.



approx top center  
point on stone

railroad rail

5/8" capped rebar



# SECTION CORNER RECORD

SE 800-650

## BOONE COUNTY SURVEYOR'S OFFICE

State Plane grid coordinates NAD83 (NSRS 2007):  
North: 1703928.84 East: 3159849.66 (U.S. survey feet)

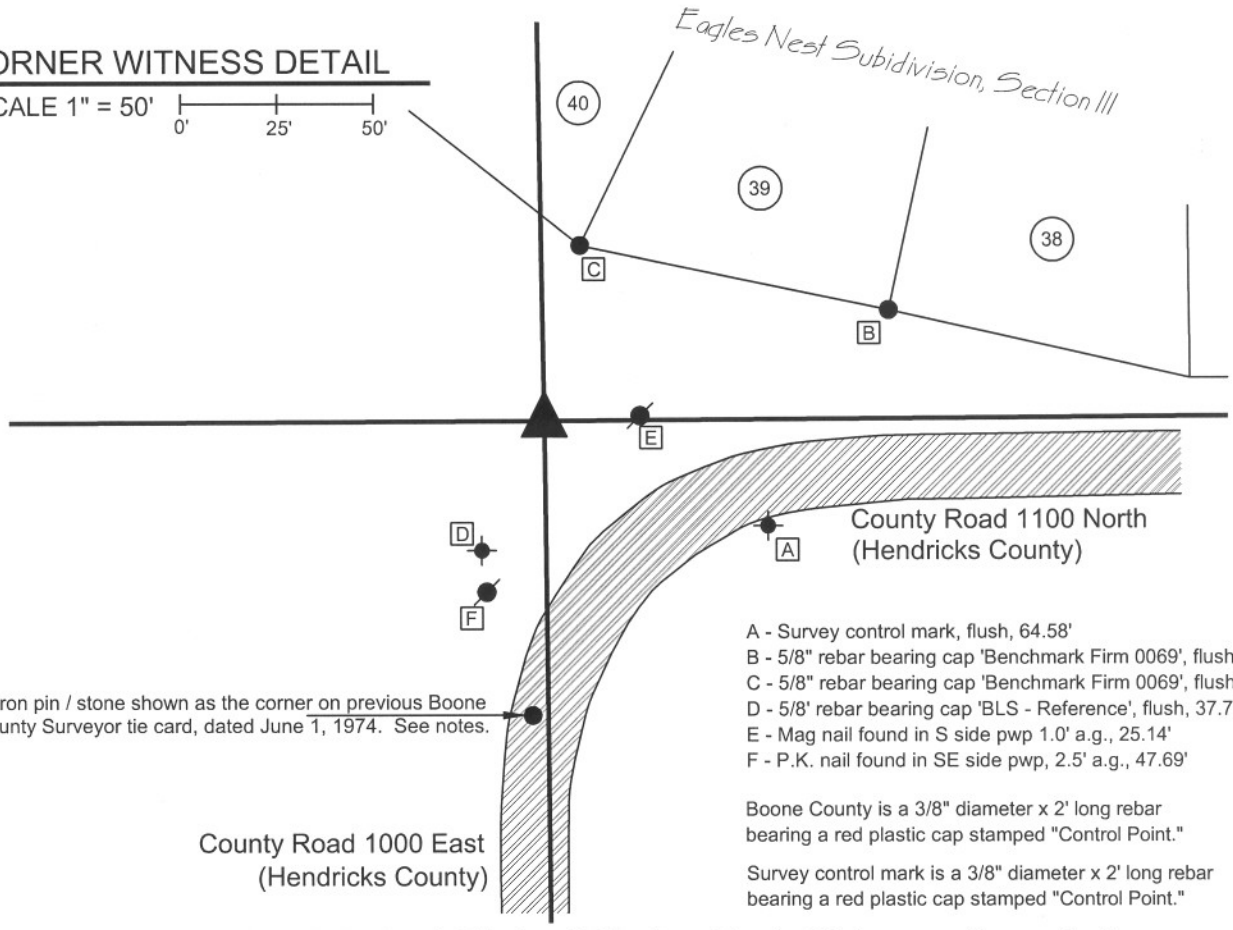
Type of monument: Harrison, 4" disk 'Section Corner'  
Depth: Flush with ground surface

Indiana tie card references:  
IN02\_T17NR2E07\_76  
IN02\_T17NR2E18\_04



### CORNER WITNESS DETAIL

SCALE 1" = 50'  
0' 25' 50'



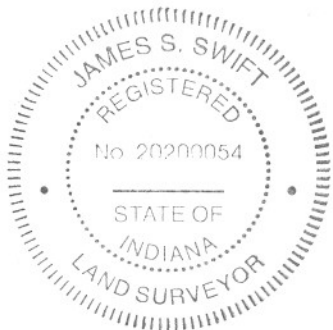
Iron pin / stone shown as the corner on previous Boone County Surveyor tie card, dated June 1, 1974. See notes.

- A - Survey control mark, flush, 64.58'
- B - 5/8" rebar bearing cap 'Benchmark Firm 0069', flush 94.51'
- C - 5/8" rebar bearing cap 'Benchmark Firm 0069', flush 46.70'
- D - 5/8" rebar bearing cap 'BLS - Reference', flush, 37.75'
- E - Mag nail found in S side pwp 1.0' a.g., 25.14'
- F - P.K. nail found in SE side pwp, 2.5' a.g., 47.69'

Boone County is a 3/8" diameter x 2' long rebar bearing a red plastic cap stamped "Control Point."

Survey control mark is a 3/8" diameter x 2' long rebar bearing a red plastic cap stamped "Control Point."

The Harrison monument was set in the precise location of a 5/8" rebar, which it replaces. The rebar is in the same position as a pipe shown on a Hendricks County tie card, dated March 30, 1981. This tie card states that "a stone believed to be the original 12x16 in. corner stone was found lying west of the corner." The 5/8 inch rebar was held as the corner for the plats of the Eagles Nest subdivision adjoining this corner to the north. A previous tie card on file in the Boone County Surveyor's Office, dated June 1, 1974, demonstrates the corner to be significantly south of the location of the rebar / iron pipe. Analysis of evidence along the section line to the east and west supports the conclusion that the Hendricks County tie card is correct and that previous Boone County tie card is erroneous. It is believed that the stone found in 1974 is a witness stone and does not monument the corner. This corner was originally established in July, 1821

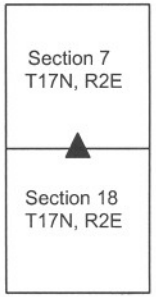


*Kenneth E. Hedge*  
Kenneth E. Hedge, County Surveyor

*James S. Swift*  
James S. Swift, IN LS 20200054  
December 21, 2007

Eagle Township  
Boone County

Brown Township  
Hendricks County



# SECTION CORNER RECORD

SE 800-700

## BOONE COUNTY SURVEYOR'S OFFICE

State Plane grid coordinates NAD83 (2011):

North: 1703948.54 East: 3162488.98 (U.S. survey feet)

Type of monument: Calculated position - no monument set

Corner falls in lake. Please refer to witnesses

Indiana tie card references:

IN02\_T17NR2E07\_80 IN02\_T17NR2E08\_72

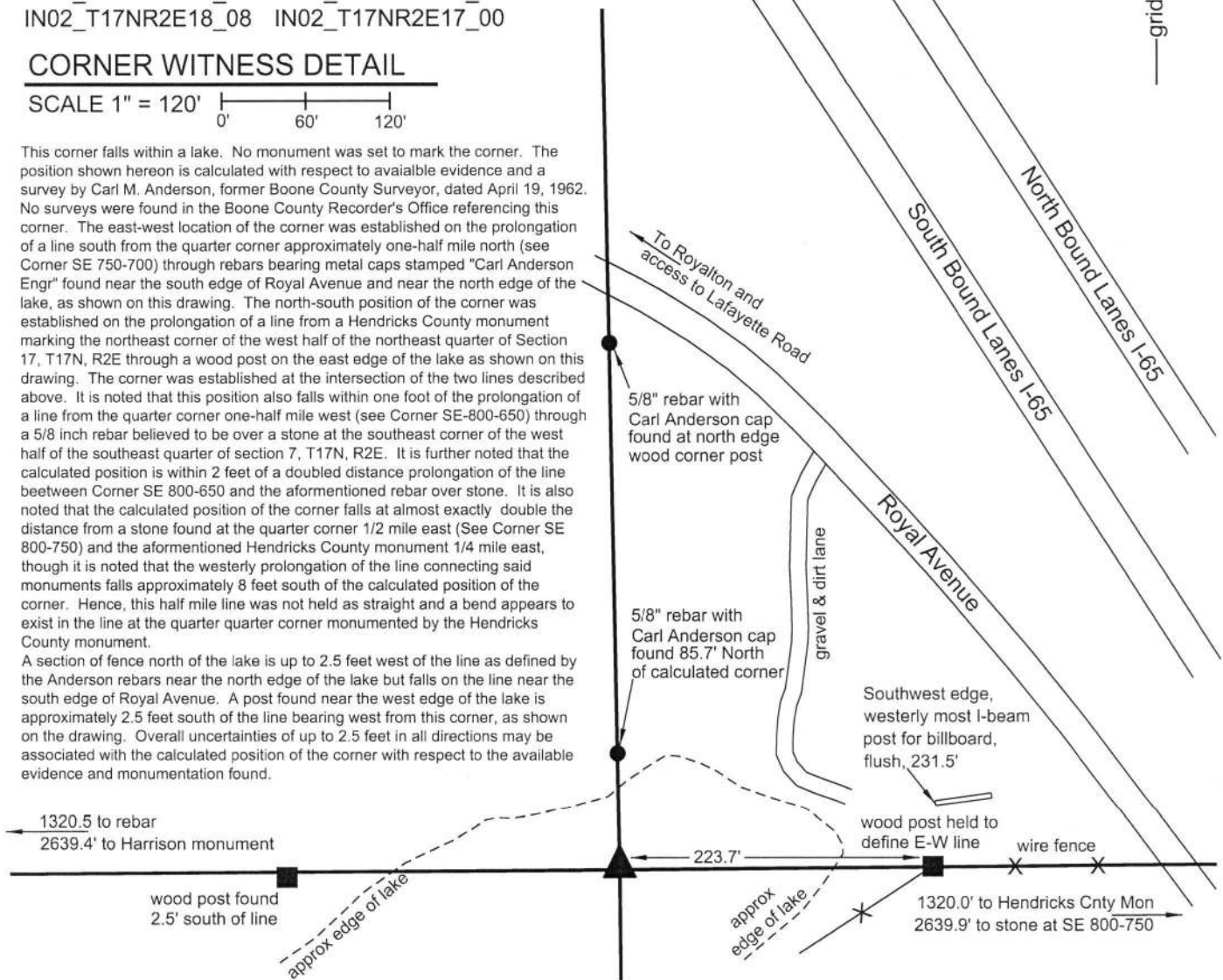
IN02\_T17NR2E18\_08 IN02\_T17NR2E17\_00

### CORNER WITNESS DETAIL

SCALE 1" = 120'

This corner falls within a lake. No monument was set to mark the corner. The position shown hereon is calculated with respect to available evidence and a survey by Carl M. Anderson, former Boone County Surveyor, dated April 19, 1962. No surveys were found in the Boone County Recorder's Office referencing this corner. The east-west location of the corner was established on the prolongation of a line south from the quarter corner approximately one-half mile north (see Corner SE 750-700) through rebars bearing metal caps stamped "Carl Anderson Engr" found near the south edge of Royal Avenue and near the north edge of the lake, as shown on this drawing. The north-south position of the corner was established on the prolongation of a line from a Hendricks County monument marking the northeast corner of the west half of the northeast quarter of Section 17, T17N, R2E through a wood post on the east edge of the lake as shown on this drawing. The corner was established at the intersection of the two lines described above. It is noted that this position also falls within one foot of the prolongation of a line from the quarter corner one-half mile west (see Corner SE-800-650) through a 5/8 inch rebar believed to be over a stone at the southeast corner of the west half of the southeast quarter of section 7, T17N, R2E. It is further noted that the calculated position is within 2 feet of a doubled distance prolongation of the line between Corner SE 800-650 and the aforementioned rebar over stone. It is also noted that the calculated position of the corner falls at almost exactly double the distance from a stone found at the quarter corner 1/2 mile east (See Corner SE 800-750) and the aforementioned Hendricks County monument 1/4 mile east, though it is noted that the westerly prolongation of the line connecting said monuments falls approximately 8 feet south of the calculated position of the corner. Hence, this half mile line was not held as straight and a bend appears to exist in the line at the quarter quarter corner monument by the Hendricks County monument.

A section of fence north of the lake is up to 2.5 feet west of the line as defined by the Anderson rebars near the north edge of the lake but falls on the line near the south edge of Royal Avenue. A post found near the west edge of the lake is approximately 2.5 feet south of the line bearing west from this corner, as shown on the drawing. Overall uncertainties of up to 2.5 feet in all directions may be associated with the calculated position of the corner with respect to the available evidence and monumentation found.



*Kenneth E. Hedge*  
 Kenneth E. Hedge, County Surveyor

*James S. Swift*  
 James S. Swift, IN LS 20200054  
 August 1, 2018

Eagle Township

Boone County	Section 7 T17N, R2E	Section 8 T17N, R2E
	Hendricks County	Section 18 T17N, R2E