

SECTION CORNER RECORD

NE 500-600

BOONE COUNTY SURVEYOR'S OFFICE

State Plane grid coordinates NAD83 (NSRS 2007):

Corner 1: North: 1772662.46 East: 3156017.05 (U.S. survey feet)

Corner 2: North: 1772645.96 East: 3156017.26 (U.S. survey feet)

CORNER WITNESS DETAIL

SCALE 1" = 40'

Corner 1:

Type of monument: Harrison, 4" disk 'Section Corner'

Depth: One inch below adjacent road surface

Corner 2:

Type of monument: Harrison, 4" disk 'Section Corner'

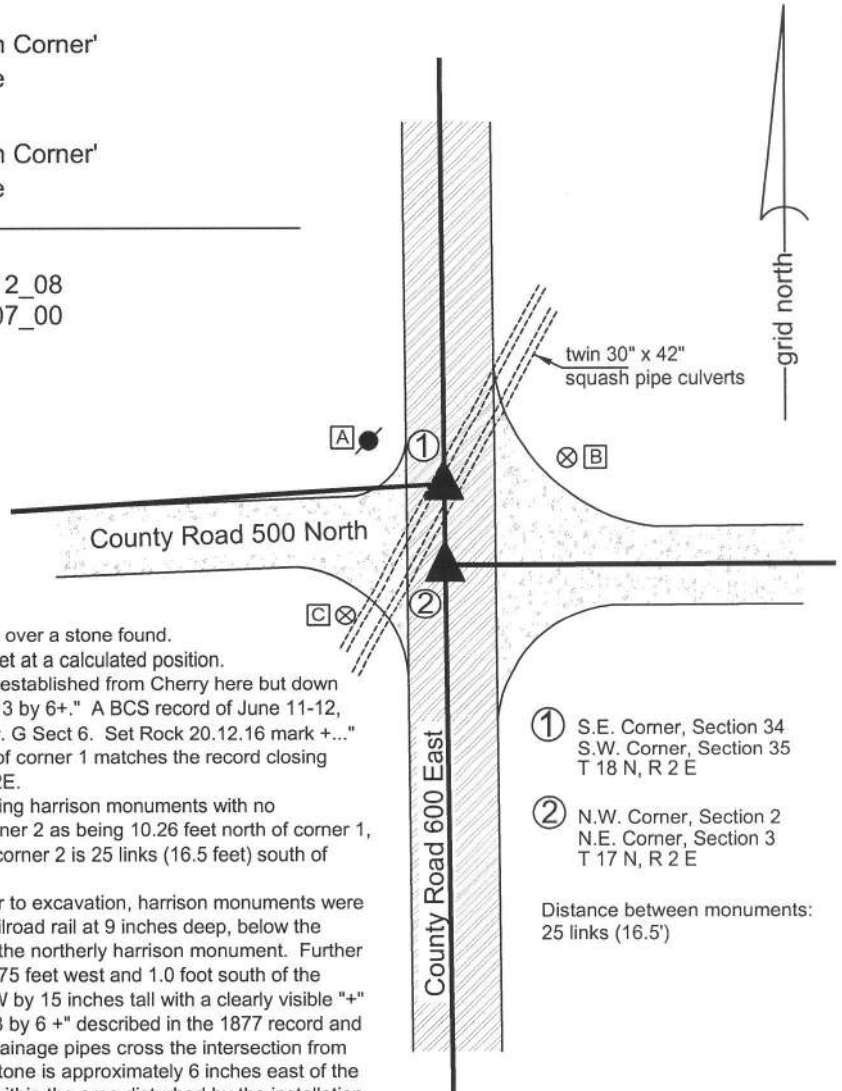
Depth: One inch below adjacent road surface

Indiana tie card references:

IN02_T19NR1E01_80 IN02_T19NR1E12_08

IN02_T19NR2E06_72 IN02_T19NR2E07_00

- A - Mag nail set in E. side power pole, 2' a.g.
16.52' to corner 1, 29.07' to corner 2.
- B - Boone County witness mark, flush,
26.07' to corner 1, 33.49' to corner 2.
- C - Boone County witness mark, flush,
33.06' to corner 1, 23.24' to corner 2.



The harrison monument at the closing corner (corner 2) was set over a stone found.

The harrison monument at the standard corner (corner 1) was set at a calculated position.

A BCS record of April 17, 1872, referring to corner 2, states "Reestablished from Cherry here but down by the roots, also found old stake at corner where set Rock 14.13 by 6+." A BCS record of June 11-12, 1877, referring to corner 1, states "Reestablished 25 lks North fr. G Sect 6. Set Rock 20.12.16 mark +..." It is noted that the referenced 25 link offset with corner 2 south of corner 1 matches the record closing distance documented in the original notes for Township 19N, R2E.

A BCS tie card dated August 3, 2005 shows both corners as being harrison monuments with no documentation of source. It is noted that the tie card shows corner 2 as being 10.26 feet north of corner 1, whereas the original notes and the 1877 record both state that corner 2 is 25 links (16.5 feet) south of corner 1.

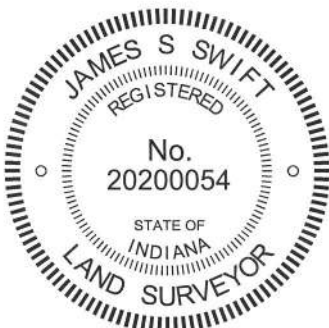
This corner was excavated on May 28 and June 28, 2010. Prior to excavation, harrison monuments were found as shown on the 2005 tie card. Excavation revealed a railroad rail at 9 inches deep, below the southerly harrison monument. No monument was found below the northerly harrison monument. Further excavation revealed a stone found at 17 inches below grade, 2.75 feet west and 1.0 foot south of the southerly harrison. This stone is 6 inches N-S by 14 inches E-W by 15 inches tall with a clearly visible "+" etched on the top. The stone was accepted as being the "14.13 by 6 +" described in the 1877 record and was held as marking corner 2. A set of two corrugated metal drainage pipes cross the intersection from the southwest quadrant to the northeast quadrant. The found stone is approximately 6 inches east of the back-fill material associated with the pipes. Corner 1 falls well within the area disturbed by the installation of the pipes and no further evidence was found in the vicinity of corner 1. The specific position of corner 1 was established at 16.5 feet from corner 2, on the prolongation of the range line as determined by the positions of corner 2 and the standard quarter corner approximately one-half mile south.

Corner 1 was originally established as a wood post in 1819 and corner 2 was originally established as a wood post in July, 1821.

① S.E. Corner, Section 34
S.W. Corner, Section 35
T 18 N, R 2 E

② N.W. Corner, Section 2
N.E. Corner, Section 3
T 17 N, R 2 E

Distance between monuments:
25 links (16.5')



Kenneth E. Hedge
Kenneth E. Hedge, County Surveyor

James S. Swift
James S. Swift, IN LS 20200054
July 25, 2011

Clinton Twp	Marion Twp
Section 1 T19N, R1E	Section 6 T19N, R2E
Section 12 T19N, R1E	Section 7 T19N, R2E

PHOTOGRAPHIC DOCUMENTATION

Date of photography: June 28, 2010

Note: all pictures on this page show the closing corner (corner 2).

View of the stone as first exposed.



The stone washed to clearly show the etched mark on top.



View from above the stone, looking east along County Road 500 North.



View of the stone from above.



View of the stone from above and west.



For details and documentation, refer to related sheet "Section Corner Record."

SECTION CORNER RECORD

NE 500-650

BOONE COUNTY SURVEYOR'S OFFICE

State Plane grid coordinates NAD83 (CORS96):

North: 1772652.38 East: 3158839.16 (U.S. survey feet)

Type of monument: Harrison, 4" disk 'Section Corner'

Depth: six inches below adjacent gravel road surface

Indiana tie card references:

IN02_T19NR2E06_72

IN02_T19NR2E07_04

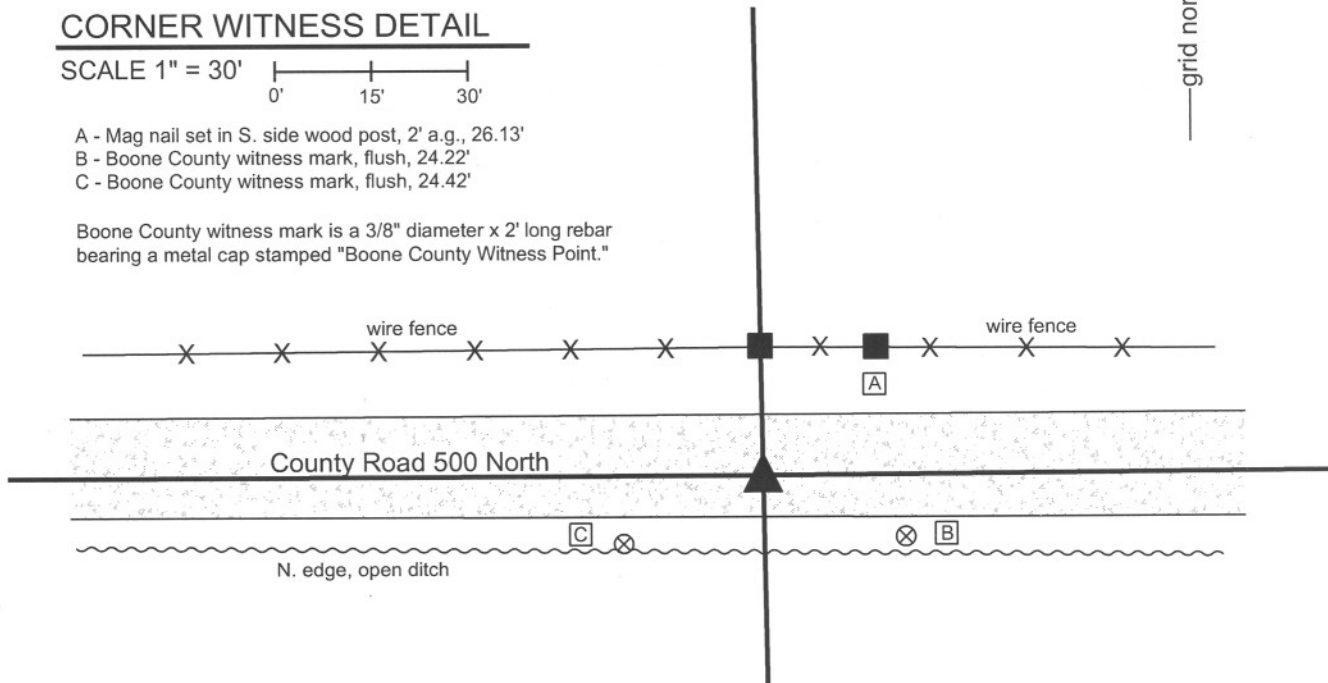


CORNER WITNESS DETAIL

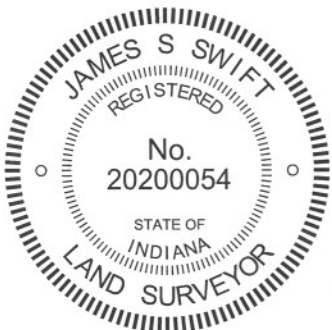
SCALE 1" = 30'
0' 15' 30'

- A - Mag nail set in S. side wood post, 2' a.g., 26.13'
- B - Boone County witness mark, flush, 24.22'
- C - Boone County witness mark, flush, 24.42'

Boone County witness mark is a 3/8" diameter x 2' long rebar bearing a metal cap stamped "Boone County Witness Point."



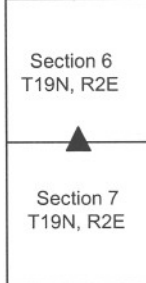
The harrison monument was set in place of a vertical section of railroad rail found. A BCS record of December 12, 1871 states "Rock was set Stump of Walnut shows." A BCS tie card dated June, 1970 states "No Stone, Found Rail." This corner was excavated on March 17, 2011. Prior to excavation, a railroad rail was found at 3 inches deep. Excavation of an area extending 5 feet north, 4 feet east, 4 feet south and 4 feet west of the rail yielded no further evidence of the corner. Excavation was performed to a minimum of 14 inches deep, the depth at which the road bed meets the clay layer below. It is noted that the 1970 tie card shows the rail as found. The earliest known examples of rails being set as section corner monuments in Boone County is 1967. It is known that, beginning in 1967, it was a common practice for BCS field crews to remove a stone, if found, and replace it with a section of railroad rail set on end. Neither a tie card nor field notes were found demonstrating the rail to be set at this corner. Hence, it is not known whether the rail was set as replacement of a found stone or just at the apparent corner, being in the middle of the road, opposite a wood corner post on the north side. In any case, as no other evidence was found, the found rail was accepted as being the best available evidence of the corner. The rail was removed and a harrison monument was set in its place. This corner was originally established as a wood post in July, 1821.



Kenneth E. Hedge
 Kenneth E. Hedge, County Surveyor

James S. Swift
 James S. Swift, IN LS 20200054
 March 1, 2012

Marion Twp



SECTION CORNER RECORD

NE 500-700

BOONE COUNTY SURVEYOR'S OFFICE

State Plane grid coordinates NAD83 (CORS96):

North: 1772667.44 East: 3161478.48 (U.S. survey feet)

Type of monument: Harrison, 4" disk 'Section Corner'

Depth: six inches below adjacent gravel road surface

Indiana tie card references:

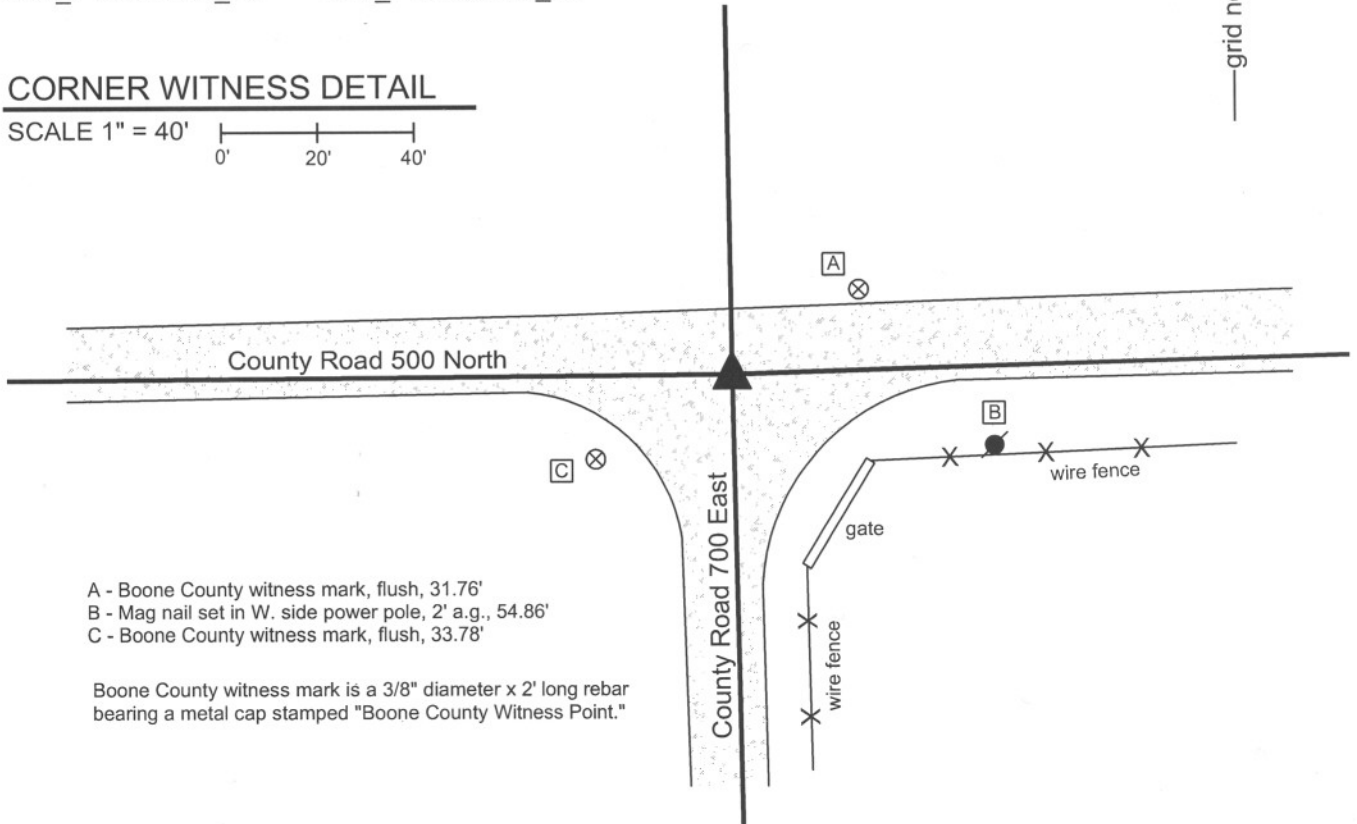
IN02_T19NR2E06_80 IN02_T19NR2E05_72

IN02_T19NR2E07_08 IN02_T19NR2E08_00



CORNER WITNESS DETAIL

SCALE 1" = 40'



- A - Boone County witness mark, flush, 31.76'
- B - Mag nail set in W. side power pole, 2' a.g., 54.86'
- C - Boone County witness mark, flush, 33.78'

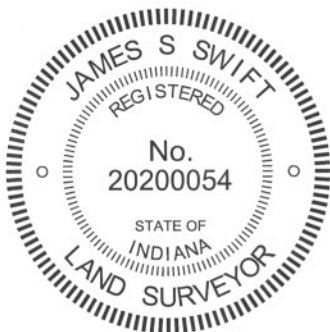
Boone County witness mark is a 3/8" diameter x 2' long rebar bearing a metal cap stamped "Boone County Witness Point."

The harrison monument was set over a stone found.

A BCS record of August 26 - 29, 1868 states "Reestablished from Beech stump, roots of a Oak and an Old Stake. Set Rock 12.9 by 8 marked +. A broken brick under it." A BCS tie card dated June 3, 1974 states "No Stone, Found Rail."

This corner was excavated on March 16, 2011. Prior to excavation, a vertical section of railroad rail was found at 2 inches below the surface of the gravel road. Excavation revealed the stone described in the 1868 record at 16 inches deep. With 8 inches of the top of the stone exposed, it measures 8 inches E-W by 9 inches N-S with a clearly visible etched + on the top. The stone is embedded in the clay layer below the road, with the top of the stone at the bottom of the road bed. A piece of brick was found next to the stone. The stone was held as marking the corner and left in place. The top 8 inches of the stone were encased in concrete and the harrison monument was set directly over the etched + on the top of the stone. The railroad rail, removed during excavation, had been 2.9 feet north and 0.2 foot west of the stone.

This corner was originally established as a wood post in July, 1821.



Kenneth E. Hedge
Kenneth E. Hedge, County Surveyor

James S. Swift
James S. Swift, IN LS 20200054
March 1, 2012

Marion Township

Section 6 T19N, R2E	Section 5 T19N, R2E
Section 7 T19N, R2E	Section 8 T19N, R2E

PHOTOGRAPHIC DOCUMENTATION

Date of photography: March 16, 2011

View of the stone as first exposed.



View of the stone from above and west.



View from above the stone, looking west along County Road 500 North.



View of the stone from above and south.



The stone from above shortly before being encased in concrete as part of setting the harrison monument over the stone.



For details and documentation, refer to related sheet "Section Corner Record."

SECTION CORNER RECORD

NE 550-600

BOONE COUNTY SURVEYOR'S OFFICE

State Plane grid coordinates NAD83 (NSRS 2007):

Corner 1: North: 1775289.77 East: 3155992.67 (U.S. survey feet)

Corner 2: North: 1775306.27 East: 3155992.51 (U.S. survey feet)

Type of monument: Harrison, 4" disk 'Section Corner'

Depth: One inch below adjacent road surface

Indiana tie card references:

IN02_T19NR1E01_44

IN02_T19NR2E06_36

① East quarter corner
Section 1
T 19 N, R 1 E

② West quarter corner
Section 6
T 19 N, R 2 E

CORNER WITNESS DETAIL

SCALE 1" = 30'

The harrison monument at corner 1 was set over a stone and the harrison monument at corner 2 was set in place of a stone.

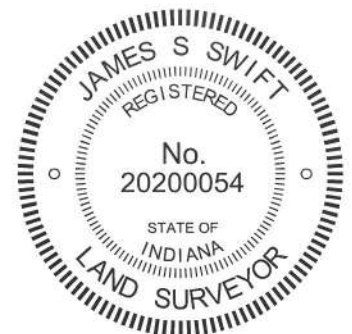
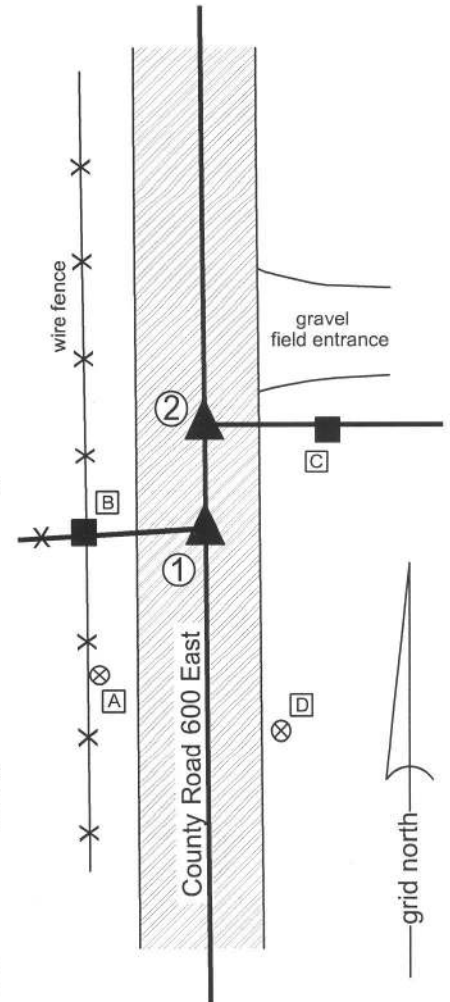
This corner is addressed in several references in the Boone County Surveyor's Record. Investigation of the record and excavation of physical evidences yields the conclusion that the monumented corners, as found, have been held as the corners since the late 1800s. The stone found at corner 1 was established in 1877 and the stone found at corner 2 was established in 1857. Current and historical patterns of occupation agree with the positions of the stones as found, with corner 2 being 25 links (16.5') north of corner 1. With respect to the original government survey, however, it would be expected that corner 1 would be 25 links north of corner 2. This fact was addressed by several surveys during the 1800s, but the stones as set in 1877 and 1857, respectively, have apparently been honored by patterns of occupation and the stones, as found, were held as marking the respective corners.

Corner 1 was established along the range line in 1819. Corner 2 was not established as part of the original federal survey, but, being the west quarter corner of section 6, should have been placed at the same closing distance and orientation as the record closing offset for the corners to the south. As part of a survey dated April 1-3, 1857, County Surveyor William Ensminger established corner 2, stating "Reestablished Set Rock 6 by 14 in." As part of a survey dated June 11-12, 1877, County Surveyor Thomas Huckstep established corner 1 stating "Reestablished 39.96 North of E and 38.44 South of C. Set Rock 15.9.6 marked +." Huckstep gives does not refer to the relative position of corner 2 in this record. As part of a survey dated November 20 and December 8, 1893, County Surveyor William Lane, with the aforementioned Huckstep as his deputy, references corner 2, stating "As established by Ensminger is 41 links too far North." The record does not show that a new monument was set. As part of a survey dated July 7, 1897, County Surveyor J. Ashley addresses the issue, stating with specific respect to corner 1 "Established 7 1/2 links North of old stone set for "D" in 1877 by Tm. Huckstep. Lap corner (H in Sec 6, 19N, R2E) was set 25 links S. of "D." Old stone, set for lap corner, by Mr. Ensminger (see Sec 6, 19N, R2E) is 42 1/2 links North of lap corner as herein established. Set oak stake at lap corner." Ashley's record does not mention setting a new monument at corner 1 ("D"). Using Ashley's numbers, it is computed that the two stones, as found by Ashley, were 25 links apart, with corner 1 south of corner 2. Ashley attempts to correct what he concluded were the erroneous positions of both corners. However, it appears that patterns of occupation were not changed and that the stones, as found by Ashley, continued to be held as the corners. Current occupation agrees with occupation visible on the 1939 aerial photo.

This corner was excavated on June 7, 2010. Prior to excavation, harrison monuments were found, both of which are shown on BCS tie cards dated October 27, 2005. This tie card shows corner 2 as being 16.44 feet north of corner 1, in general agreement with occupation. The tie card reveals no documentation about the source of the harrisons or the reason for the specific positions. Excavation of corner 1 revealed the record stone from 1877 slightly north of the harrison monument. The stone was found at 8 inches below grade, embedded in the clay layer below the road bed. The stone measures 6 inches N-S by 9 inches E-W and is 15 inches tall. Excavation of corner 2 revealed the record stone from 1857. The stone, as found was at 6 inches deep and leaning slightly to the north. The stone appears to have been hit and the top broken off. Pieces of the top were found in the vicinity. As found the stone measured 6 inches N-S by 12 inches E-W by 12 inches tall. Set back in a vertical orientation at the approximate position it may have been prior to being leaned, the top of the stone was only 2 inches below grade but was exactly 16.5 feet (25 links) north of the stone found at corner 1. Due to the shallow depth, the stone was removed.

Given the longevity of the patterns of occupation associated with the stones as set in 1857 and 1877 and the fact that the revised surveys of 1893 and 1897 appear not to have affected patterns of occupation, the stones as found were held as the corners. A harrison monument was set over the stone at corner 1 and a harrison monument was set in place of the stone at corner 2.

- A - Boone County witness mark, flush 28.26' to corner 1, 42.66' to corner 2
- B - Mag nail set in E. side post, 6 in. a.g. 18.67' to corner 1, 25.90' to corner 2
- C - Mag nail set in W. side post, 1' a.g. 24.88' to corner 1, 19.15' to corner 2
- D - Boone County witness mark, flush 33.62' to corner 1, 39.45' to corner 2



Clinton Twp Marion Twp

Section 1 T19N, R1E	Section 6 T19N, R2E
------------------------	------------------------

Kenneth E. Hedge
Kenneth E. Hedge, County Surveyor

James S. Swift
James S. Swift, IN LS 20200054

July 25, 2011, Revised March 7, 2013

PHOTOGRAPHIC DOCUMENTATION

Date of photography: June 7, 2010

View of the stone at the standard corner (corner 1) as first exposed.



View of the stone at the closing corner (corner 2) as first exposed.



View from the east, looking across the stone at corner 1 and along the fence to the west.



View from the north, looking across the stone at corner 2 and south along County Road 600 East. The stone is shown stood up in a vertical orientation in this picture. Corner 1, not yet excavated, is visible in the foreground.



For details and documentation, refer to related sheet "Section Corner Record."

SECTION CORNER RECORD

NE 550-700

BOONE COUNTY SURVEYOR'S OFFICE

State Plane grid coordinates NAD83 (CORS96):

North: 1775312.89 East: 3161439.53 (U.S. survey feet)

Type of monument: Harrison, 4" disk 'Section Corner'

Depth: three inches above adjacent ground

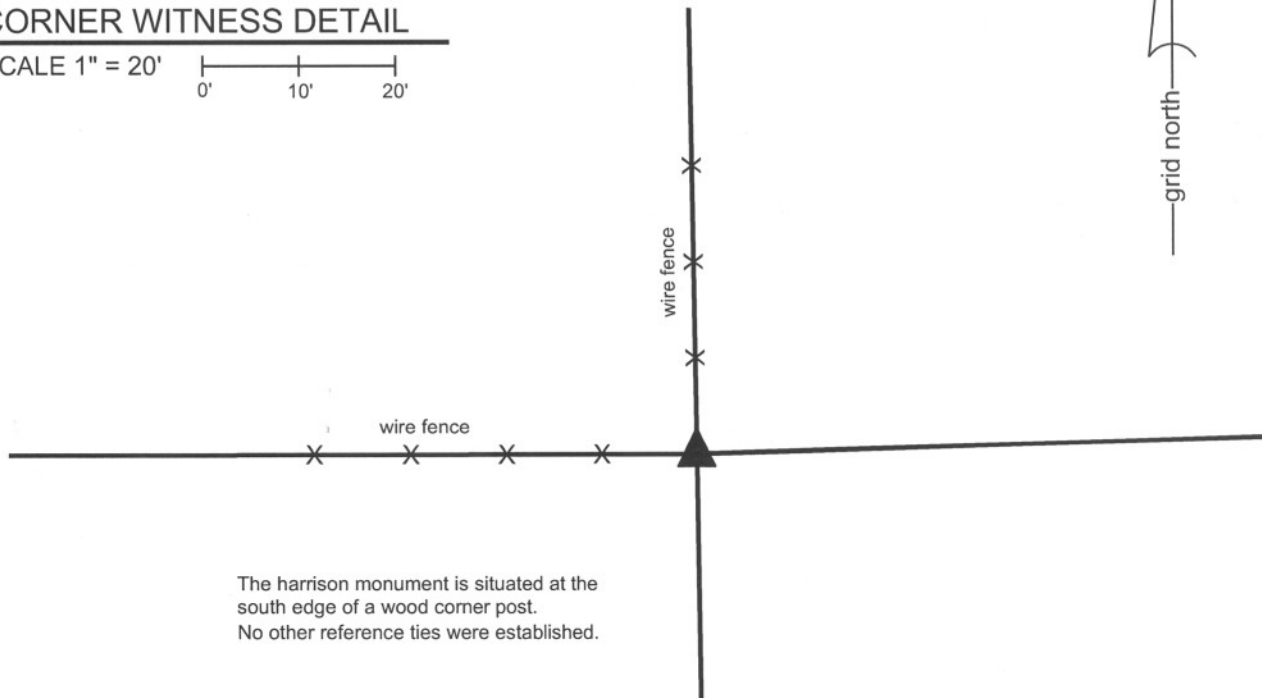
Indiana tie card references:

IN02_T19NR2E06_44

IN02_T19NR2E05_36

CORNER WITNESS DETAIL

SCALE 1" = 20'



The harrison monument is situated at the south edge of a wood corner post. No other reference ties were established.

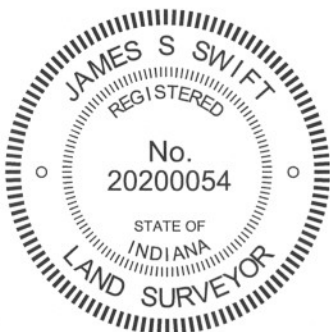
The harrison monument was set over a stone found.

A BCS record of May 1st, 1871 states "Reestablished from Ash. Set a Rock 13.8.7 +." No recent BCS tie cards were found referencing this corner.

A tie card provided by the Indiana Department of transportation shows the corner as a wood post.

This corner was excavated on October 11, 2011. Prior to excavation a wood corner post was found with fence to the north and west. Excavation revealed the stone described in the 1871 record at 11 inches deep along the south edge of the corner post. With 7 inches of the stone exposed, it measures 8 inches N-S by 7 inches E-W. The full south side of the stone was exposed and was found to measure 13 inches tall. A clearly visible etched + is visible on the top, center of the stone. The stone was held as marking the corner. The top 7 inches of the stone were encased in concrete and a harrison monument was set directly over the etched +.

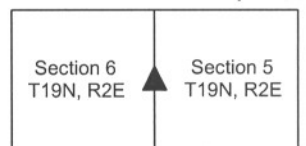
This corner was originally established as a wood post in July, 1821.



Kenneth E. Hedge
Kenneth E. Hedge, County Surveyor

James S. Swift
James S. Swift, IN LS 20200054
March 1, 2012

Marion Township



PHOTOGRAPHIC DOCUMENTATION

Date of photography: October 11 & 14, 2011

View of the stone as first exposed at the south edge of the base of the post.



Close-up view of the stone as first exposed.



View of the post and the harrison monument set over the stone. View from the southeast.



Close-up view of the stone more fully exposed.



View of the stone from above immediately prior to being encased in concrete as part of the establishment of the harrison monument.



For details and documentation, refer to related sheet "Section Corner Record."