

# SECTION CORNER RECORD

SE 050-100

## BOONE COUNTY SURVEYOR'S OFFICE

State Plane grid coordinates NAD83 (2011):

North: 1743158.99 East: 3129865.18 (U.S. survey feet)

Type of monument: Harrison, 4" disk 'Section Corner'

Depth: Flush with adjacent ground

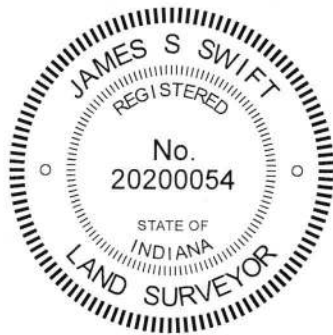
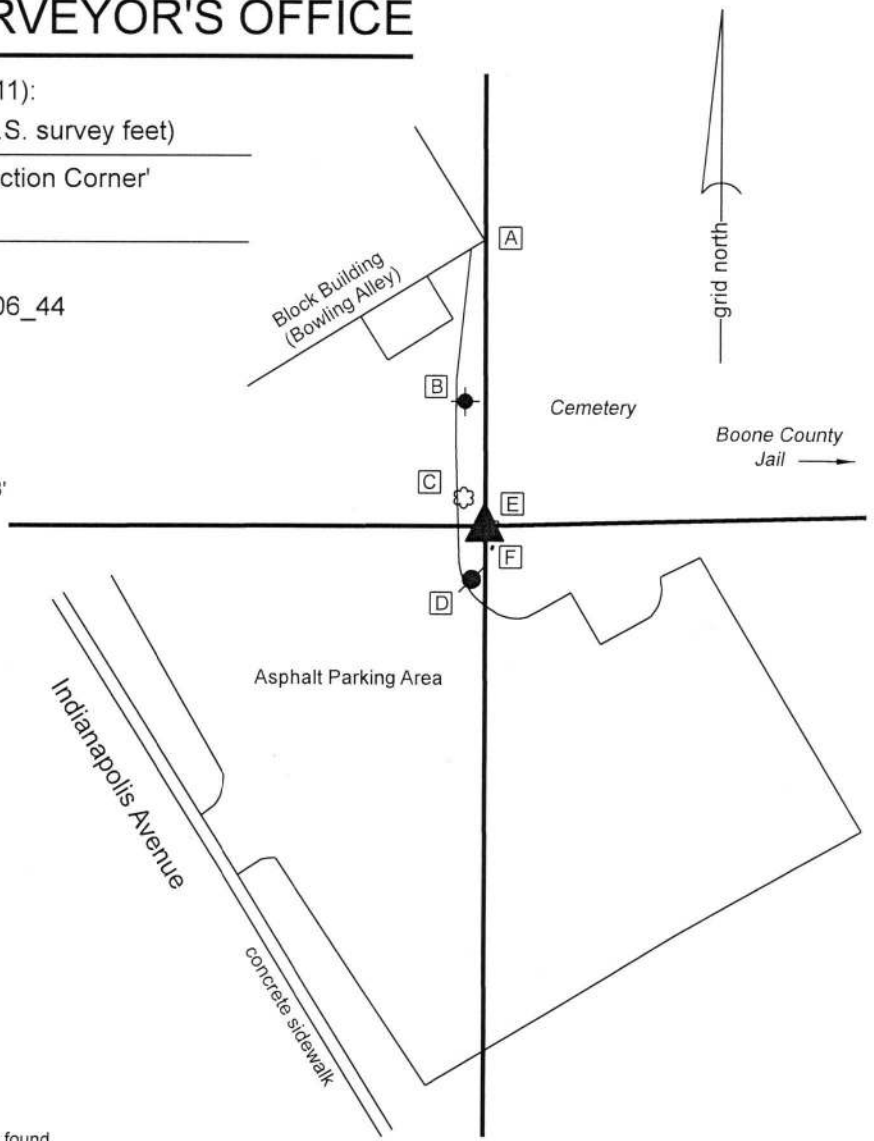
Indiana tie card references:

IN02\_T18NR1E05\_36 IN02\_T18NR1E06\_44

### CORNER WITNESS DETAIL

SCALE 1" = 60' 0' 30' 60'

- A - S.E. corner, block building, 89.0'
- B - Mag nail set in S. side, wood light pole, 2' a.g., 37.8'
- C - Mag nail set in E. side power pole, 2' a.g., 17.3'
- D - S.E. edge, 28 inch diameter maple, 8'
- C - S.W. corner, grave stone, Fries I. Conkright, 2.5'
- D - N.W. corner, grave stone, Minnie Rogers, 6.7'



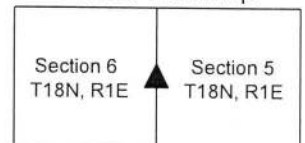
The harrison monument was set over the base of an iron post found.

A BCS record of July 13, 1871 states "Reestablished from both trees. Set two Rocks. One 7.6.3 + Top one 11,8,5 +." No recent BCS tie cards were found referencing this corner.

Excavation was originally performed at this corner on November 12, 2013. Prior to excavation, a broken-off iron post in concrete was found providing the obvious physical evidence of the corner. A rebar bearing a metal cap stamped 'Carl Anderson Engr.,' referring to the former Boone County Surveyor, was found at the northeast edge of the concrete base for the post, 0.8 foot north and 0.3 foot east of the center of the post. The rebar appeared to have been set as close to the post as possible, given the presence of the concrete base. The position of the post works well with evidence and monumentation found for properties to the north and northwest. A survey by Mark Strong, LS #S0295, dated August 16, 1990 shows the corner as an 'ips' indicating iron pin set with no statement of how the corner was established or reference to the iron post or Anderson rebar. Reconstruction of the position of the corner with respect to found rebars bearing Mr. Strong's cap demonstrates that the position held for that survey is approximately 2.4 feet north and 0.4 foot east of the center of the iron post. A subsequent survey by Jessica Stapleton, LS 20600032, recorded in Survey Book 12, pages 30-31 in the Office of the Boone County Recorder, holds a computed position based on the Strong survey, but states that this position is 1.8 foot north of the 'cut-off fence post in concrete.'

On November 12, 2013, excavation was performed at the corner with a limited extent to the east, due to the presence of existing graves. Excavation revealed that the iron post was anchored to a substantial base of concrete mixed with brick extending deep into the ground, clearly indicating that the post was an old corner post. No other evidence, including the rocks called for in the 1871, was found. It is noted that two graves are in immediate proximity to the corner and previous excavation, in the form of grave digging, must have occurred to the east of the corner. An effort to determine if the position of the corner as shown on the Strong survey was established with respect to an ancient description of the adjacent cemetery proved to not be fruitful. An 'Proof of Statement of Deed' in Proof of Deeds and Instruments, Volume 1, pages 69-72 in said Recorder's Office affirms that the original deed for the county poor farm, of which the cemetery was part, was destroyed in the fire which destroyed the Boone County records in October, 1856. No ancient description of the cemetery was found. The iron post, being the obvious physical evidence of the corner and matching well with deeds and evidence to the north and northwest, was held as marking the corner. The post was cut of below ground level and a Harrison monument was set directly over the post, anchored to the base of concrete and brick, in the same position of the post as found at ground level prior to excavation. Up to 2.5 feet of uncertainty is attributed to the position of the corner with respect to the interpretations of the corner per the aforementioned surveys. This corner was originally established as a wood post in 1820.

Center Township



*Kenneth E. Hedge*  
Kenneth E. Hedge, County Surveyor

*James S. Swift*  
James S. Swift, IN LS 20200054 July 23, 2019

# SECTION CORNER RECORD

SE 100-000

## BOONE COUNTY SURVEYOR'S OFFICE

State Plane grid coordinates NAD83 (CORS96):

Corner 1: North: 1740288.14 East: 3124864.58 (U.S. survey feet)

Corner 2: North: 1740489.40 East: 3124863.85 (U.S. survey feet)

Type of monument:

Corner 1: Harrison, 4" disk 'Section Corner' (3 inches above adjacent ground)

Corner 2: 36" length, 5/8 inch rebar with metal cap stamped 'Boone County Surveyor' (flush)

Indiana tie card references:

IN02\_T18NR1W01\_80 IN02\_T18NR1E06\_72

IN02\_T18NR1W12\_08 IN02\_T18NR1W07\_00

### CORNER WITNESS DETAIL

SCALE 1" = 50'



The corners fall in an area of tilled ground where no reliable witness marks are available.

The harrison monument at corner 1 was set in place of a rebar bearing a plastic cap stamped "Weihe Engr 0012." The rebar at corner 2 was set on the range line at a distance of 201.26 feet north of corner 1, which position is also at the east edge of the former position of an old wood corner post. A survey by Woolpert recorded in Survey Book 2, pages 12-13, in the Boone County Recorder's Office shows corner 2 as being monumented by a stone and shows no monument found at corner 1. The survey states that the distance between the two corners was computed based on an index factor of 1.0031 used to adjust the original closing distance of 304 links (200.64 feet). In the spring of 2012 the capped rebar was found ostensibly marking corner 1 and various evidence was found in the vicinity of corner 2, including the base of an old wood corner post and several rocks. None of the rocks were positively identifiable as a section corner stone. It was not clear which stone may have been held for the Woolpert survey and it appeared that some disturbance may have taken place since that survey was performed in 1995. It was observed that by holding the rebar as corner 1 and placing corner 2 on the range line (defined by corner 1 and the standard corner 1/2 mile north) at the indexed distance of 201.26 feet reported on the Woolpert survey, corner 2 would fall at the east edge of the found remains of the old corner post. These positions both fit well with the Woolpert survey relative to other corners shown on that survey.

In the fall of 2012 the fence line and tree line marking the lines to the north and east of corner 2 were removed by the current farmer for agricultural purposes. The various rocks and post at or near corner 2 were removed and a steel post was set in the position of the old wood corner post. After this work was completed, the two corners were monumented by Boone County Surveyor's Office. At corner 1 the rebar was removed and replaced with a harrison monument in the same position. At corner 2 a 36 inch length of 5/8 inch diameter rebar was set and capped with a metal cap stamped 'Boone County Surveyor.' This monument is 0.7 foot east of the steel post which was set in the position of the old wood corner post.



②

- ① S.E. Corner, Section 1  
N.E. Corner, Section 12  
T 18 N, R 1 W
- ② S.W. Corner, Section 6  
N.W. Corner, Section 7  
T 18 N, R 1 E

Distance between monuments: 201.26'  
Record closing = 304 links (200.64')

①

Center Township

Section 1 T18N, R1W	Section 6 T18N, R1E
Section 12 T18N, R1W	Section 7 T18N, R1E



*Kenneth E. Hedge*  
Kenneth E. Hedge, County Surveyor

*James S. Swift*  
James S. Swift, IN LS 20200054  
April 9, 2013

# SECTION CORNER RECORD

SE 100-050

## BOONE COUNTY SURVEYOR'S OFFICE

State Plane grid coordinates NAD83 (CORS96):

North: 1740492.65 East: 3127210.53 (U.S. survey feet)

Type of monument: Harrison, 4" disk 'Section Corner'

Depth: four inches above adjacent tilled ground.

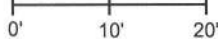
Indiana tie card references:

IN02\_T18NR1E06\_76

IN02\_T18NR1E07\_04

### CORNER WITNESS DETAIL

SCALE 1" = 20'



The harrison monument falls within an area of tilled ground. The only available reference mark is a brick catch basin, as shown below.

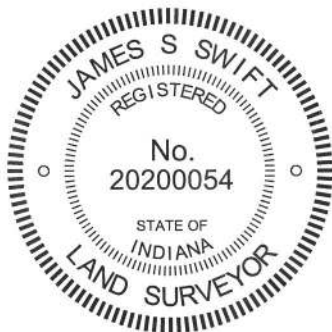
○ Brick catch basin  
11.2' NNE of the harrison monument

The harrison monument was set in place of a stone found.

A BCS record of November 8, 1912 states Re-est. from stump of S. Ash, three rocks, one 5,4,2 one 9,7,5 top one 10,9,7 +."

In the spring of 2012 a wood corner post was found with fence to the north and south along with evidence of fence cut off to the east and west. In the fall of 2012 the north-south fence line was removed for agricultural purposes by the current farmer. The portion of the corner post which had been above ground was removed and the post was broken off below ground level. After this occurred, the base of the post was found using the coordinates determined when the top of the post was still present and visible. On December 6, 2012 excavation revealed all three of the stones described in the 1912 record at the northwest edge of the remains of the base of the post. The top rock was askew, but the lower two rocks appeared to be undisturbed. The rocks were removed and a harrison monument was set in place of the lower two rocks. The monument was witnessed with a steel post and an orange fiberglass lathe. While the monument is amidst tilled field, it appears to be close enough to an existing brick catch basin to be out of the way of farming practices.

This corner was originally set as a wood post in June, 1820.



*Kenneth E. Hedge*  
Kenneth E. Hedge, County Surveyor

*James S. Swift*  
James S. Swift, IN LS 20200054

April 3, 2013

Center Twp.

Section 6  
T18N, R1E

Section 7  
T18N, R1E

PHOTOGRAPHIC DOCUMENTATION

Date of photography: April 13, Dec. 6, Dec. 13, 2012

The old corner post as found in April 2012.



The base of the corner post as found and uncovered in December 2012.



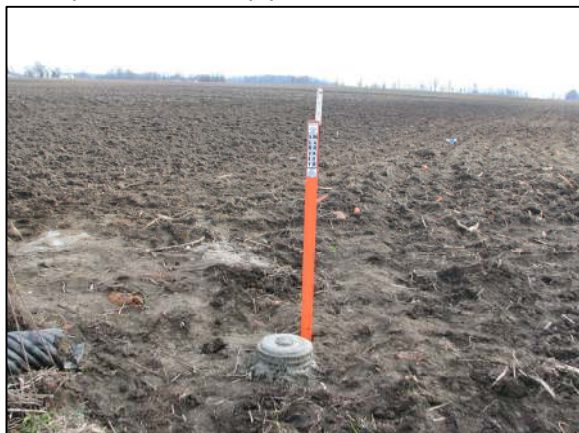
The post and the three stones described in the 1912 record, removed from the ground.



The section of plastic storm pipe set in the hole from which the three stones were excavated.



The harrison monument set within the concrete filled piece of storm pipe, View from the N.E.



View from the NNW, looking across the brick catch basin (covered with boards) and towards the harrison monument and witness lathe.



For details and documentation, refer to related sheet "Section Corner Record."