

SECTION CORNER RECORD

SE 600-650

BOONE COUNTY SURVEYOR'S OFFICE

State Plane grid coordinates NAD83 (NSRS 2007):

Corner 1: North: 1714676.38 East: 3159403.70 (U.S. survey feet)

Corner 2: North: 1714684.29 East: 3159682.75 (U.S. survey feet)

Type & depth of monument:

Corner 1: Harrison (4" disk 'Section Corner'), flush

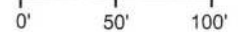
Corner 2: 5/8" rebar with metal cap ('Boone County Surveyor'), flush

Indiana tie card references:

IN02_T17NR2E06_04 IN02_T18NR2E31_72

CORNER WITNESS DETAIL

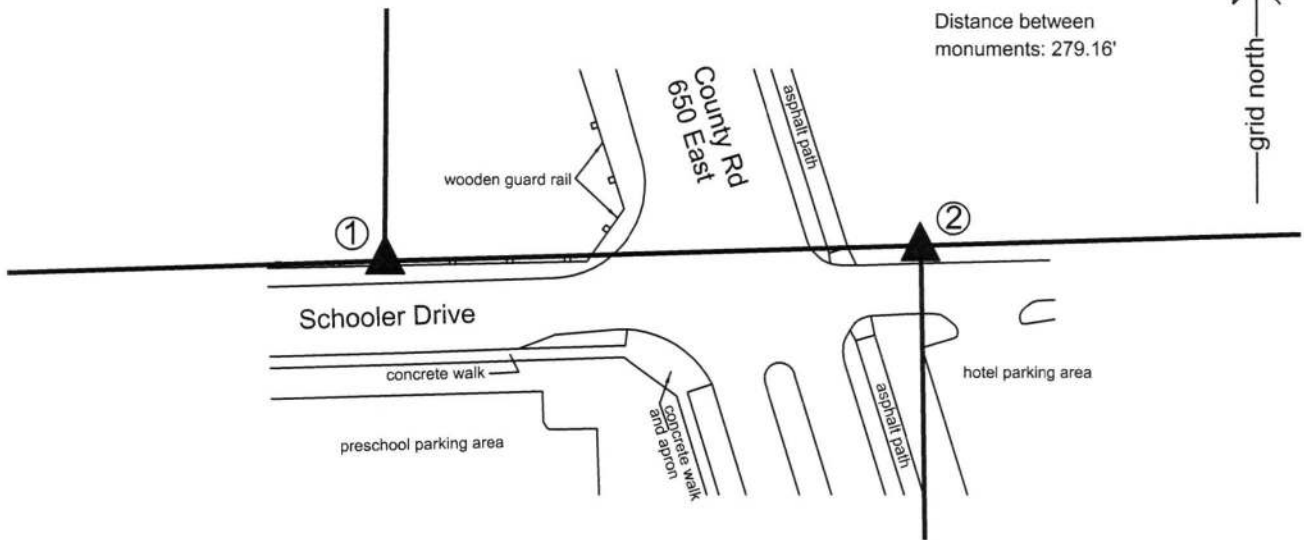
SCALE 1" = 100'



① South Quarter Corner
Section 31
T 18 N, R 2 E

② North Quarter Corner
Section 6
T 17 N, R 2 E

Distance between
monuments: 279.16'



The Harrison monument at Corner 1 was set in place of a rebar found. This rebar is known to have been held as the corner on many surveys and has a substantial history of being accepted as marking the corner on private surveys, including on the preliminary surveys for the Anson development by American Consulting, Inc., later called American Structurepoint, Inc. As found in 2008, the rebar was bent at the top, due to construction activity in the vicinity but the vertical shaft of the rebar was found to be undisturbed. The Harrison monument was set in place of the rebar in 2009. Minimal uncertainty is associated with the position of Corner 1. However, significant uncertainty is associated with the position of Corner 2. Due to the fact that Corner 2 was not set as part of the original federal survey, no record closing dimension was reported by the federal surveyors at this corner. The standard procedure for the north quarter corner of section 6 is to apply the record closing distance from the northeast corner of section 6, which is 390 links or 257.4 feet, and a BCS record of September 5, 1861 indicates that this method and distance were held for establishing corner 2. Some modern surveys, including the first set of surveys by American Consulting, see Survey Book 8, page 40 (Boone County Recorder's Office) among others, also hold the closing distance of 257.4 feet. However, later surveys by the same company hold a different position for the corner, being at 279.16 feet east of Corner 1. A survey by American Structurepoint recorded in Survey Book 12, page 39 notes the change and references the new position for the corner to a previous survey by Higby Land Surveying dated July 25, 1995. Other surveys, including a survey by Stoepelwerth and Associates recorded in Survey Book 8, page 1, hold a third position for the corner, being 269.49 feet east of the corner. All of the recorded surveys included notes which indicate that the area had been disturbed by construction and ancient evidence obliterated. Ultimately, American Structurepoint held the position for Corner 2 at 279.16 feet east of Corner 1 as the basis for surveying many original lines of the Anson Development, including alignment of reconstruction of County Road 650 East. Given the degree to which these new lines dominate the northwest quarter of section 6, this position is confirmed as the corner, noting that up to 22 feet of uncertainty exists with respect to the various interpretations of Corner 2. A 5/8 inch diameter rebar with a metal cap stamped 'Boone County Surveyor' was set at this corner in 2014 after construction in the immediate vicinity of the corner had reached a substantial point of completion.

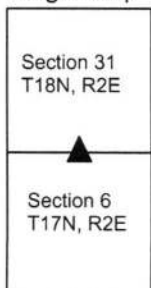


Kenneth E. Hedge
Kenneth E. Hedge, County Surveyor

James S. Swift
James S. Swift, IN LS 20200054

March 23, 2017

Eagle Twp



SECTION CORNER RECORD

SE 600-700

BOONE COUNTY SURVEYOR'S OFFICE

State Plane grid coordinates NAD83 (NSRS 2007):

Corner 1: North: 1714752.63 East: 3162095.24 (U.S. survey feet)

Corner 2: North: 1714760.44 East: 3162364.69 (U.S. survey feet)

Type of monument: Harrison, 4" disk 'Section Corner'

Depth: One inch deep (corner 1), three inches deep (corner 2)

Indiana tie card references:

IN02_T17NR2E05_00 IN02_T17NR2E06_08

IN02_T18NR2E31_80 IN02_T18NR2E32_72

- ① S.E. Corner, Section 31
S.W. Corner, Section 32
T 18 N, R 2 E
- ② N.W. Corner, Section 5
N.E. Corner, Section 6
T 17 N, R 2 E



CORNER WITNESS DETAIL

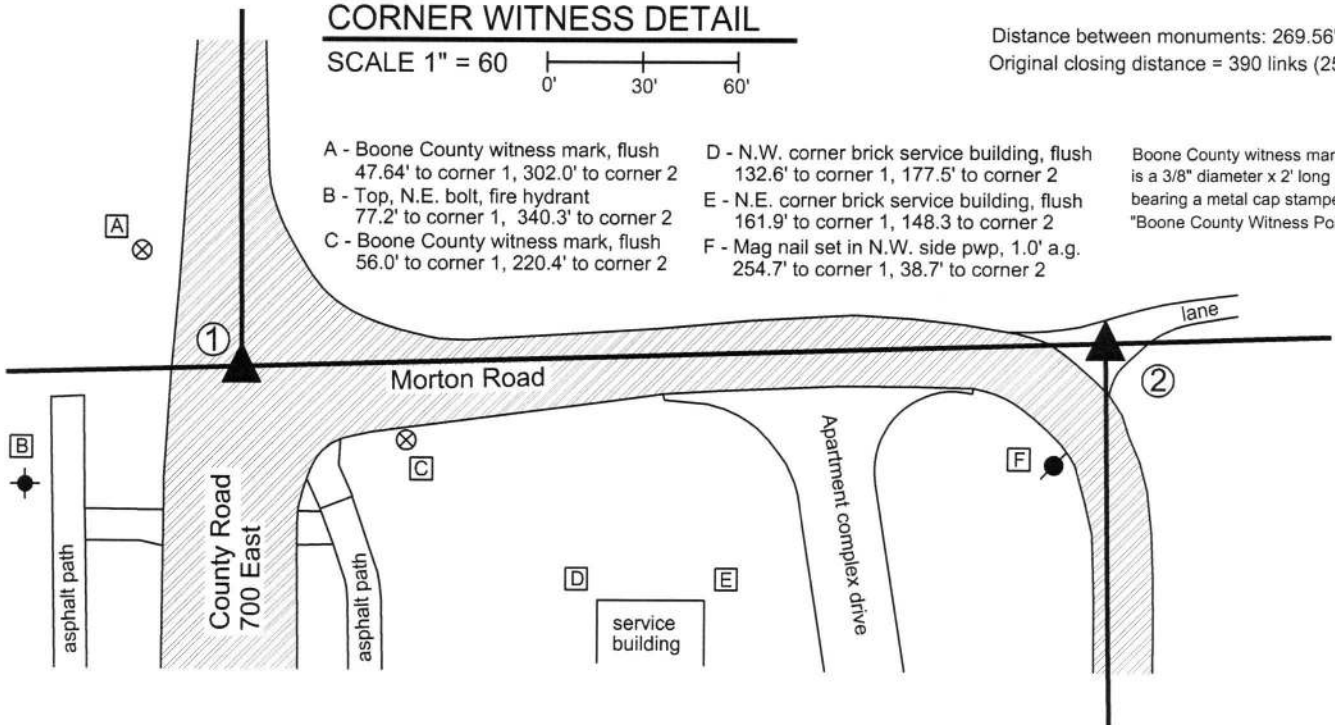
SCALE 1" = 60' 0' 30' 60'

Distance between monuments: 269.56'
Original closing distance = 390 links (257.4')

- A - Boone County witness mark, flush
47.64' to corner 1, 302.0' to corner 2
- B - Top, N.E. bolt, fire hydrant
77.2' to corner 1, 340.3' to corner 2
- C - Boone County witness mark, flush
56.0' to corner 1, 220.4' to corner 2

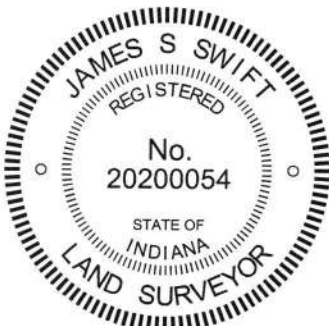
- D - N.W. corner brick service building, flush
132.6' to corner 1, 177.5' to corner 2
- E - N.E. corner brick service building, flush
161.9' to corner 1, 148.3' to corner 2
- F - Mag nail set in N.W. side pwp, 1.0' a.g.
254.7' to corner 1, 38.7' to corner 2

Boone County witness mark is a 3/8" diameter x 2' long rebar bearing a metal cap stamped "Boone County Witness Point."



The Harrison monument at Corner 1 was set in a calculated position in the same position as a rebar which formerly marked the corner. A BCS tie card dated May 19, 1994 shows the corner as a 5/8 inch rebar. Numerous surveys have held this monument as the corner, including a survey by American Consulting, Inc. recorded in Survey Book 7, pages 21-22 in the Boone County Recorder's Office. It is believed that the rebar was removed during road construction in 2006. The position of the rebar was computed with respect to the relative locations of other monuments shown on the above referenced survey and other surveys by American Consulting, Inc. and American Structurepoint, Inc. (same company, different names.) A Harrison Monument was set at the calculated position in 2009.

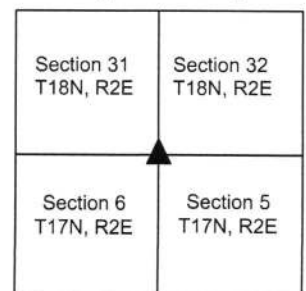
A monument called on many surveys to be a rebar with a yellow cap, but which was actually an iron pipe with a yellow survey cap (markings illegible), has long been held as marking Corner 2. The area around the pipe was excavated on September 9, 2013. Excavation of an area extending 3 feet north, 3 feet south, 2.5 feet east and 2.5 feet west of the iron pipe yielded remnants of a wood stake approximately one foot south of the pipe. No other credible evidence of the corner was found during excavation. The iron pipe (called rebar on surveys) was held to define the east-west position of the corner. The north-south position of the pipe was not held, as the monument falls slightly south of the township line connecting Corner 1 with the standard corner approximately 1/2 mile to the east. The corner was established along the range line and a Harrison monument was set at this position, 0.4 foot north of the original position of the iron pipe with cap.



Kenneth E. Hedge
Kenneth E. Hedge, County Surveyor

James S. Swift
James S. Swift, IN LS 20200054
March 23, 2017

Eagle Township



SECTION CORNER RECORD

SE 650-600

BOONE COUNTY SURVEYOR'S OFFICE

State Plane grid coordinates NAD83 (CORS96):

Corner 1: North: 1711890.82 East: 3156776.32 (U.S. survey feet)

Corner 2: North: 1711863.82 East: 3156776.86 (U.S. survey feet)

Type of monument: Harrison, 4" disk 'Section Corner'

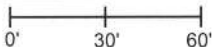
Depth: Flush with adjacent ground.

Indiana tie card references:

IN02_T17NR1E01_44

IN02_T17NR2E06_36

CORNER WITNESS DETAIL

SCALE 1" = 60' 



① E. 1/4 corner, Section 1
T 17 N, R 1 E

② W. 1/4 corner, Section 6
T 17 N, R 2 E

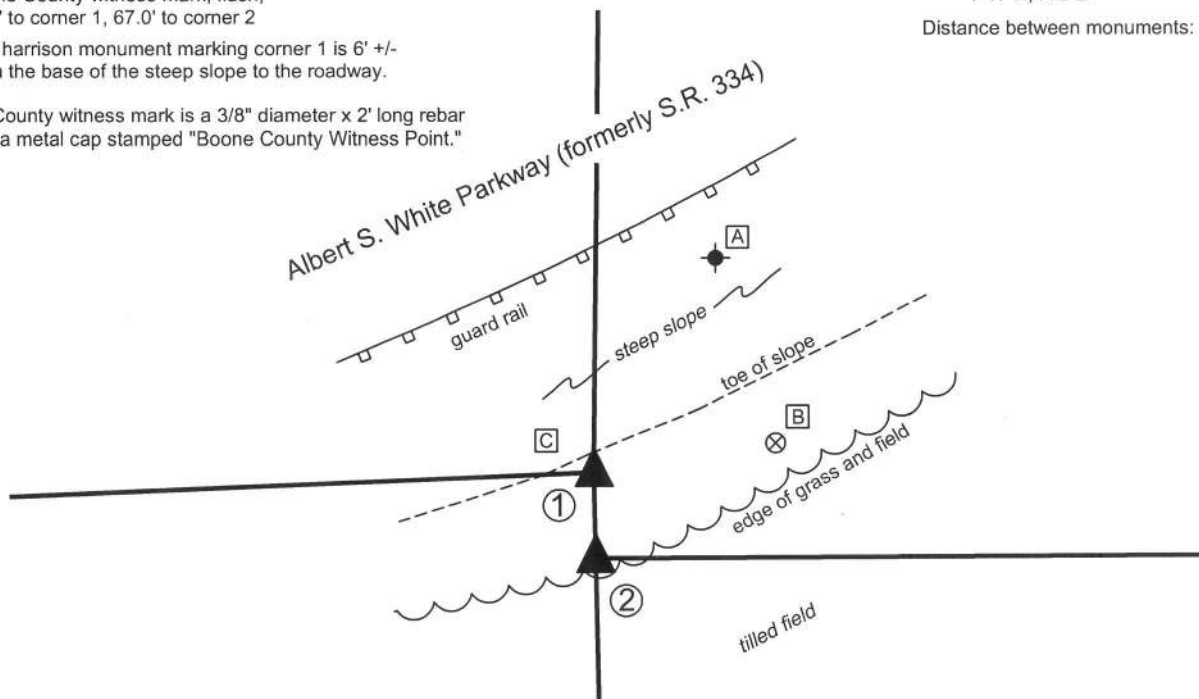
Distance between monuments: 27.01'

A - Southwesterly most bolt, base of Road sign (Chicago - Indianapolis)
77.1' to corner 1, 101.2' to corner 2.

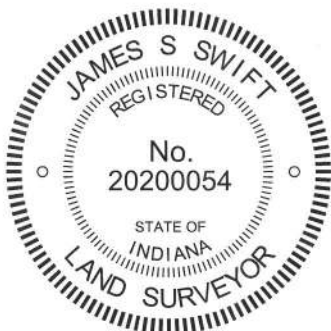
B - Boone County witness mark, flush,
57.8' to corner 1, 67.0' to corner 2

C - The harrison monument marking corner 1 is 6' +/-
from the base of the steep slope to the roadway.

Boone County witness mark is a 3/8" diameter x 2' long rebar
bearing a metal cap stamped "Boone County Witness Point."



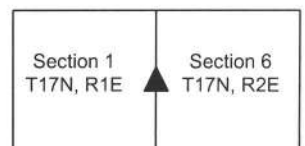
See page 2 for written documentation
and explanation of findings.



Kenneth E. Hedge
Kenneth E. Hedge, County Surveyor

James S. Swift
James S. Swift, IN LS 20200054
February 5, 2015
Page 1 of 2

Eagle Township



SECTION CORNER RECORD

SE 650-600

BOONE COUNTY SURVEYOR'S OFFICE

The harrison monuments were set in place of harrison monuments found.

This set of corners falls on the range line between ranges 1 and 2 east, 1/2 mile south of the township corner. It would be expected that the corners would fall generally along a straight line between the corners to the north and south, but they fall significantly west of the straight line. Investigation of the old records indicates that this misalignment has been in place since at least 1861.

Corner 1 is an original corner, having been set by the federal surveyors on October 28, 1819. Corner 2 is not an original corner, was never set by the federal surveyors, and should be located along the range line at the same offset distance as was established at the southwest corner of section 6. The first mention of these corners in the old BCS Surveyor's Record is in a record dated December 28, 1861 which states, with respect to corner 2, "From D to H 84.66 being 64 links gain on the original estimated increase." This is interpreted to mean that the distance from the East Quarter corner of section 6 to the west quarter corner of section 6 was 64 links longer than expected and noted on the plats of the section. This is notable, as corner 2 falls approximately 42 feet west of the straight line (64 links = 42.24 feet). The next time the corners are mentioned is a record of October 28, 1865 which states, with respect to corner 2 "Moved 12 1/2 links south and reestablished there so as to make the lap the same as it is at the SW corner of the section. Set a Rock 22.20 by 11 in marked + on top." Corner 1 is mentioned in a record of April 5, 1875, which states "Reestablished. Set two Rocks one 12,5,2 1/2 + Top One 11,10,6 marked +." Corner 2 is mentioned again as the point of commencing for a parcel description in a record dated November 5-6, 1875. Analysis of the old records indicates that, as of 1875, the corners were approximately 42 feet further west than expected, but held in such position, and were at the same offset distance as was recorded as the southwest corner of section 6, being 46 links or 30.36 feet.

BCS tie cards referencing both of these corners, signed by Cary Dodge and dated 2004, show the corners as being harrison monuments 27.03 feet apart. A survey by Anderson and Associates, signed Cary Dodge, dated December 1993 was found recorded with a deed in Deed Record 249, pages 394-397 in the Boone County Recorder's Office. This survey shows corner 1 as a buried steel post. Analysis of this survey indicates that the harrison monument at corner 1 was set at the position of the buried steel post. A survey by BCI Land Surveyors, signed by Alan B. Cleveland and recorded in Survey Book 2, page 18 shows corner 1 at a calculated position with respect to the plans for I-65 and a fence to the north of the interstate. Analysis of this survey indicates that the calculated position falls approximately 1 foot west of the harrison monument at corner 1. A survey by American Consulting, Inc. signed by Gordon L. Richardson, including a survey recorded in Survey Book 8, page 37 show corner 1 as being in conformity with the aforementioned BCI survey and corner 2 at 1/2 of the closing distance at the S.W. corner of section 6. This treatment of the relative position of the two corners does not conform to the accepted treatment of the west quarter corner of section 6 and does not conform with any other known documentation or evidence. A survey by Kimbley and Proctor signed by David B. Holley and recorded in Survey Book 3, page 42 shows the south line of the northwest quarter of section 6 as coincident with the center of County Road 650 South. The plat of Amherst Meadows at Royal Run, Section 1, shows the north line of the southwest quarter of section 6 being in County Road 650 South. The harrison monument found at corner 2 fits with this interpretation, being at the westerly prolongation of the center of C.R. 650 South, and fits with monumentation found in the road and also fits with centerline control monumentation found in Amherst Meadows which is shown as tied the quarter section line.

Significant excavation was not performed at these corners as there is ample evidence of disruption of the original ground due to the construction of an elevated roadway immediately north of the corners and it is not expected that the stones are still present. The conclusions of the above stated observations are that the harrison monument at corner 1 fits within one foot of the recorded surveys referencing it, and that its position at 42 feet west of the straight line between the southeast and northeast corners of section 1 fit the the 1861 reference. The distance between the two monuments is approximately 3 feet less than called for in the 1865 record but the position of the harrison at corner 2 fits with the monumentation along and tied to the section line to the east. General uncertainties of 3 feet north-south and 1 foot east-west are attributed to the positions of the monuments as found. No compelling evidence was found to relocate the existing monuments. Both monuments were removed, as they were not physically set in a manner which would ensure long term stability. New harrison monuments were set in the same positions in substantially more concrete.

SECTION CORNER RECORD

SE 650-700

BOONE COUNTY SURVEYOR'S OFFICE

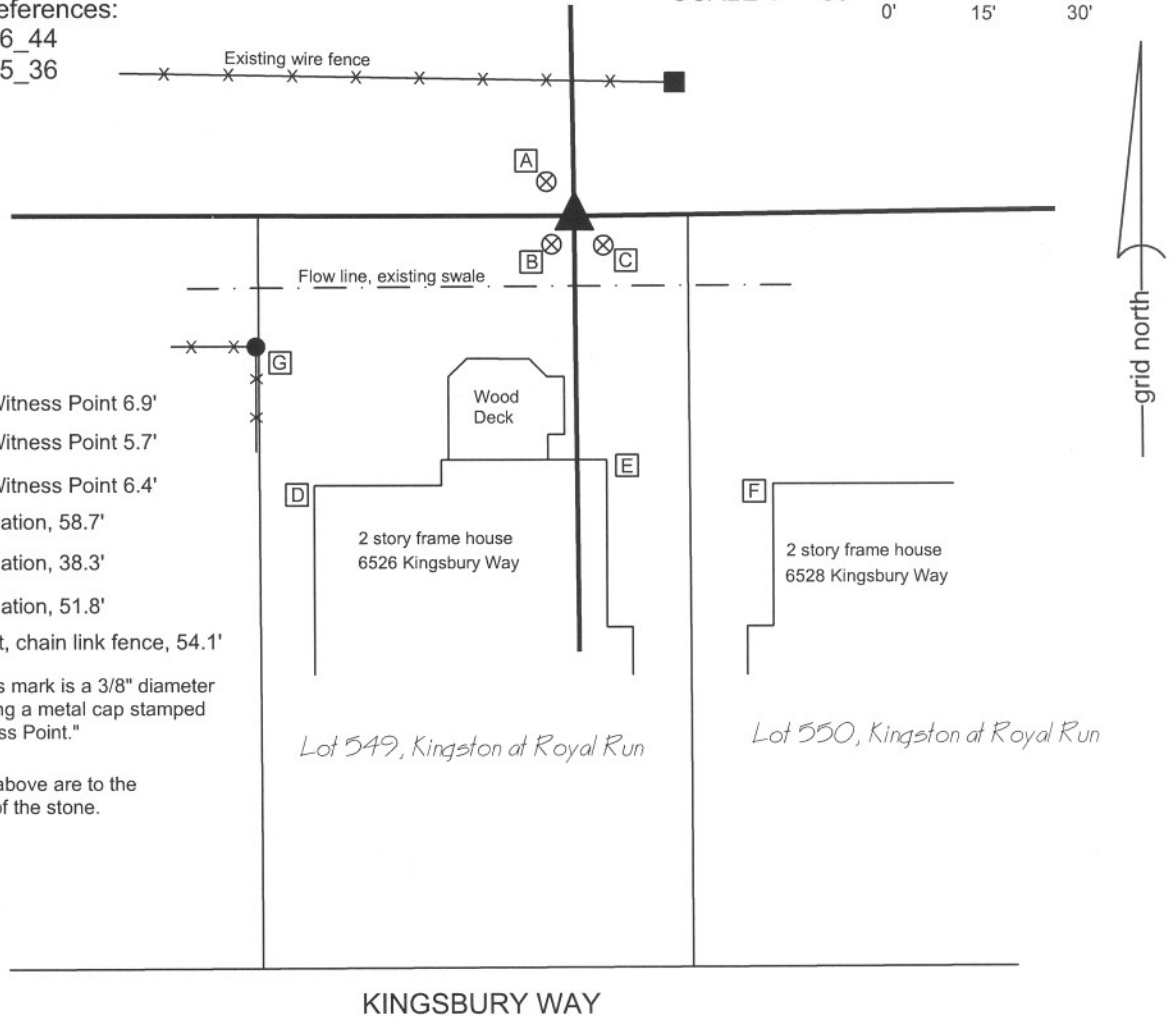
State Plane grid coordinates NAD83 (NSRS 2007):
North: 1711870.68 East: 3162403.50 (U.S. survey feet)

Type of monument: Stone with "+"
Depth: 4" below surface

Indiana tie card references:
IN02_T17NR2E06_44
IN02_T17NR2E05_36

CORNER WITNESS DETAIL

SCALE 1" = 30'
0' 15' 30'



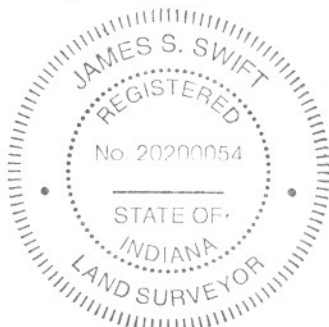
- [A] Boone County Witness Point 6.9'
- [B] Boone County Witness Point 5.7'
- [C] Boone County Witness Point 6.4'
- [D] Corner of Foundation, 58.7'
- [E] Corner of Foundation, 38.3'
- [F] Corner of Foundation, 51.8'
- [G] N.E. Corner post, chain link fence, 54.1'

Boone County witness mark is a 3/8" diameter by 2' long rebar bearing a metal cap stamped "Boone County Witness Point."

Tie distances shown above are to the "+" etched in the top of the stone.

KINGSBURY WAY

This corner is marked by a stone measuring approximately 10 inches by 11 inches at the top with a clearly marked "+" near the south edge of the top of the stone. The stone is 4 inches below the grass surface, near the north side of an existing swale. This stone is shown on a tie card dated September 3, 1976 and appears to be undisturbed. A bent and disturbed 5/8" rebar was found approximately 1.2 feet south and 0.1 east of the stone and was removed. The survey upon which the plats of the Royal Run subdivisions are based (Woolpert, Job No.65-21825-03, 10/22/1997) indicates that the stone is 1.2 feet north and 0.2 feet east of the corner and that a rebar was found 0.24 west of the corner. No explanation is offered as to why the stone was not held as the corner. The plat of Kingston at Royal Run shows a rebar set at the corner. Reconstructing the plat from mag nails in Kingsbury Way, which represent centerline control in this subdivision, the corner shown on the plat is 0.7' south and 0.1' east of the stone and 0.5' north of the disturbed (removed) rebar. This corner was originally established in July, 1821.



Kenneth E. Hedge
Kenneth E. Hedge, County Surveyor

J. S. Swift
James S. Swift, IN LS 20200054
December 21, 2007

Eagle Township

Section 6 T17N, R2E	Section 5 T17N, R2E
------------------------	------------------------

PHOTOGRAPHIC DOCUMENTATION

Date of photography: 11/01/2007

Photo shot from west, showing stone and bent 5/8" rebar.



Close-up of stone from above photo. Etched "+" is near south edge of top of stone.



SECTION CORNER RECORD

SE 700-600

BOONE COUNTY SURVEYOR'S OFFICE

State Plane grid coordinates NAD83 (NSRS 2007):

North: 1709230.31 East: 3156831.01 (U.S. survey feet) (standard corner)

North: 1709199.97 East: 3156831.63 (U.S. survey feet) (closing corner)

Type of monument: Harrison, 4" disk 'Section Corner'

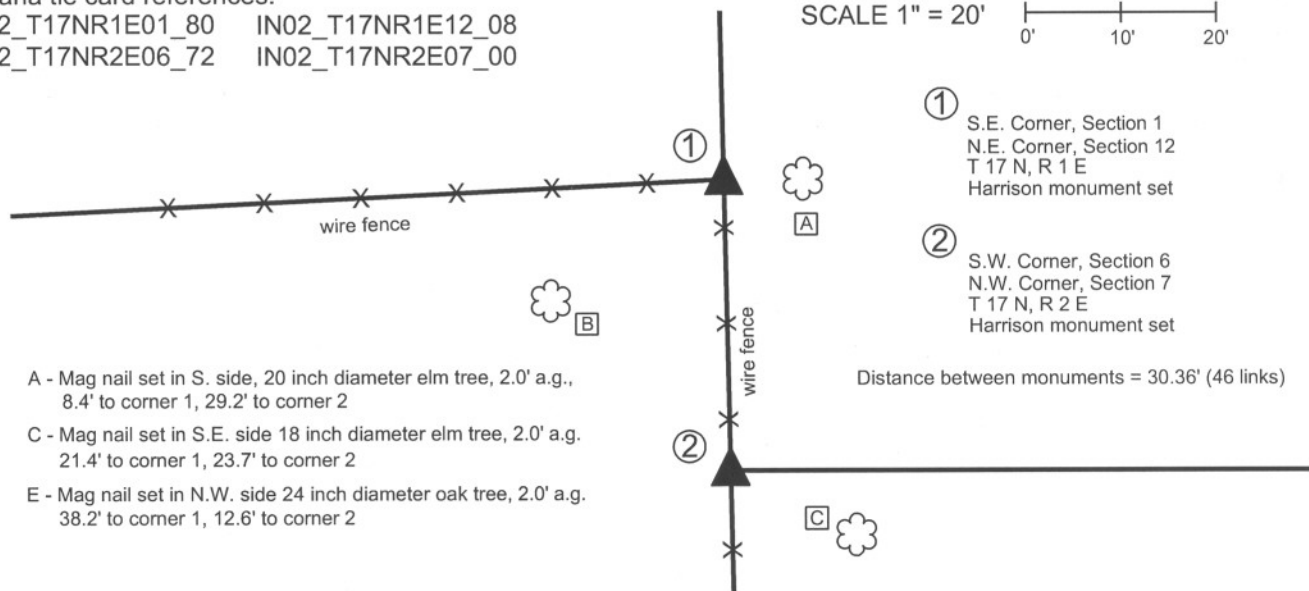
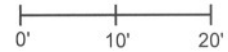
Depth: 3 inches above adjoining ground.

Indiana tie card references:

IN02_T17NR1E01_80 IN02_T17NR1E12_08
 IN02_T17NR2E06_72 IN02_T17NR2E07_00

CORNER WITNESS DETAIL

SCALE 1" = 20'



- ① S.E. Corner, Section 1
N.E. Corner, Section 12
T 17 N, R 1 E
Harrison monument set
- ② S.W. Corner, Section 6
N.W. Corner, Section 7
T 17 N, R 2 E
Harrison monument set

Distance between monuments = 30.36' (46 links)

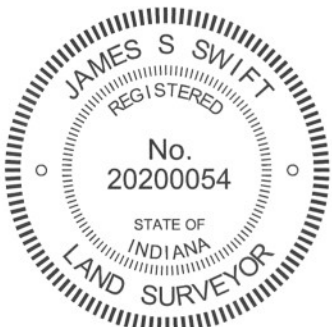
- A - Mag nail set in S. side, 20 inch diameter elm tree, 2.0' a.g.,
8.4' to corner 1, 29.2' to corner 2
- C - Mag nail set in S.E. side 18 inch diameter elm tree, 2.0' a.g.
21.4' to corner 1, 23.7' to corner 2
- E - Mag nail set in N.W. side 24 inch diameter oak tree, 2.0' a.g.
38.2' to corner 1, 12.6' to corner 2

The harrison monument at corner 1 was set in place of a rebar found and over the base of an old wood corner post. The harrison monument at corner 2 was set on the range line connecting corner 1 and the standard corner approximately 1/2 mile south at the record closing distance of 46 links from corner 1.

No specific descriptions of this corner were found in the BCS Surveyor's Record. Corner 1 is mentioned as the terminal point for measurements in records from 1836 and 1901. Corner 2 is mentioned as the terminal point for a measurement in a record of 1865. A tie card dated January 1990 on file in this office, believed to have been provided by the Indiana Department of Transportation, shows corner 1 as a 1/2 inch rebar slightly east of a wood corner fence post.

This corner was excavated on September 1, 2009. Prior to excavation, corner 1 appeared to be marked by a wood corner post with fence to the south and west and a rebar near the northeast corner of the post, per the 1990 tie card. Corner 2 appeared to be marked by two rebars approximately 0.7 of a foot apart and a stone at several inches deep, exposed in a hole. Excavation of the standard corner, being corner 1, revealed several rocks around the post, all of which appeared to be brace rocks for the post and none of which were positively identifiable as section corner stones. Excavation along the east edge of the post did confirm that the post was leaning slightly towards the west. At approximately 2.5 feet deep, the post is directly below the rebar. As the post is leaning towards the west, the rebar set on the east side of the post was directly over the base of the post as situated in the ground. It is not known whether this was intentional or not in the setting of the rebar, but given the common position of the rebar and the bottom of the post, this position was held as marking the corner and a harrison monument was set at the position of the rebar, directly over the base of the post and slightly east of the part of the post which is above ground.

Excavation at corner 2 revealed remnants of an old wood corner post in addition to the two rebars and rock found. The rock which was visible in a hole prior to excavation proved to be along the southeast edge of the old corner post. The rock is not mentioned in the BCS Surveyor's record and did not appear to be a section corner stone, so much as a brace rock. The position of the corner was calculated to be at the original closing distance of 46 links (30.36 feet) south of corner 1 on the line connecting corner 1 with the standard corner approximately 1/2 mile south (See corner SE-750-600). This position fell close to the northwest edge of the old wood corner post. One of the rebars, bearing a metal cap stamped "Carl Anderson, Prof. Engr" was 0.9 foot south and 0.4 foot west of the corner as so established. The other rebar, stamped "American Consulting Engrs, Indpls" was 0.2 foot south and 0.6 foot west of the corner. This variation reflects the approximate difference between the rebar and visible portion of the post at corner 1, as discussed above. The center of the remnants of the old wood post are 1 foot south and 0.5 foot east of the calculated corner. A survey recorded in Survey Book 6, pages 66-67 (Boone County Recorder), by American Consulting, Inc. holds corner 1 as the wood corner post (presumably the portion visible above ground) and does not discuss corner 2, but may be the source of the northerly of the two capped rebars. A survey recorded in Survey Book 6, pages 68-69 by Major Engineering and Land Surveying, Inc. shows corner 2 as the A.C.E. rebar found. A survey recorded in Survey Book 7, page 7 by the Schneider Corporation shows corner 2 as being calculated from the iron pin found at corner 1, by the same method employed herein. A harrison monument was set at the position of the corner calculated with respect to corner 1 and the record closing distance of 46 links, as discussed above.



Kenneth E. Hedge
 Kenneth E. Hedge, County Surveyor

James S. Swift
 James S. Swift, IN LS 20200054
 March 30, 2012

Perry Twp Eagle Twp

Section 01 T17N, R1E	Section 6 T17N, R2E
Section 12 T17N, R1E	Section 7 T17N, R2E

SECTION CORNER RECORD

SE 700-650

BOONE COUNTY SURVEYOR'S OFFICE

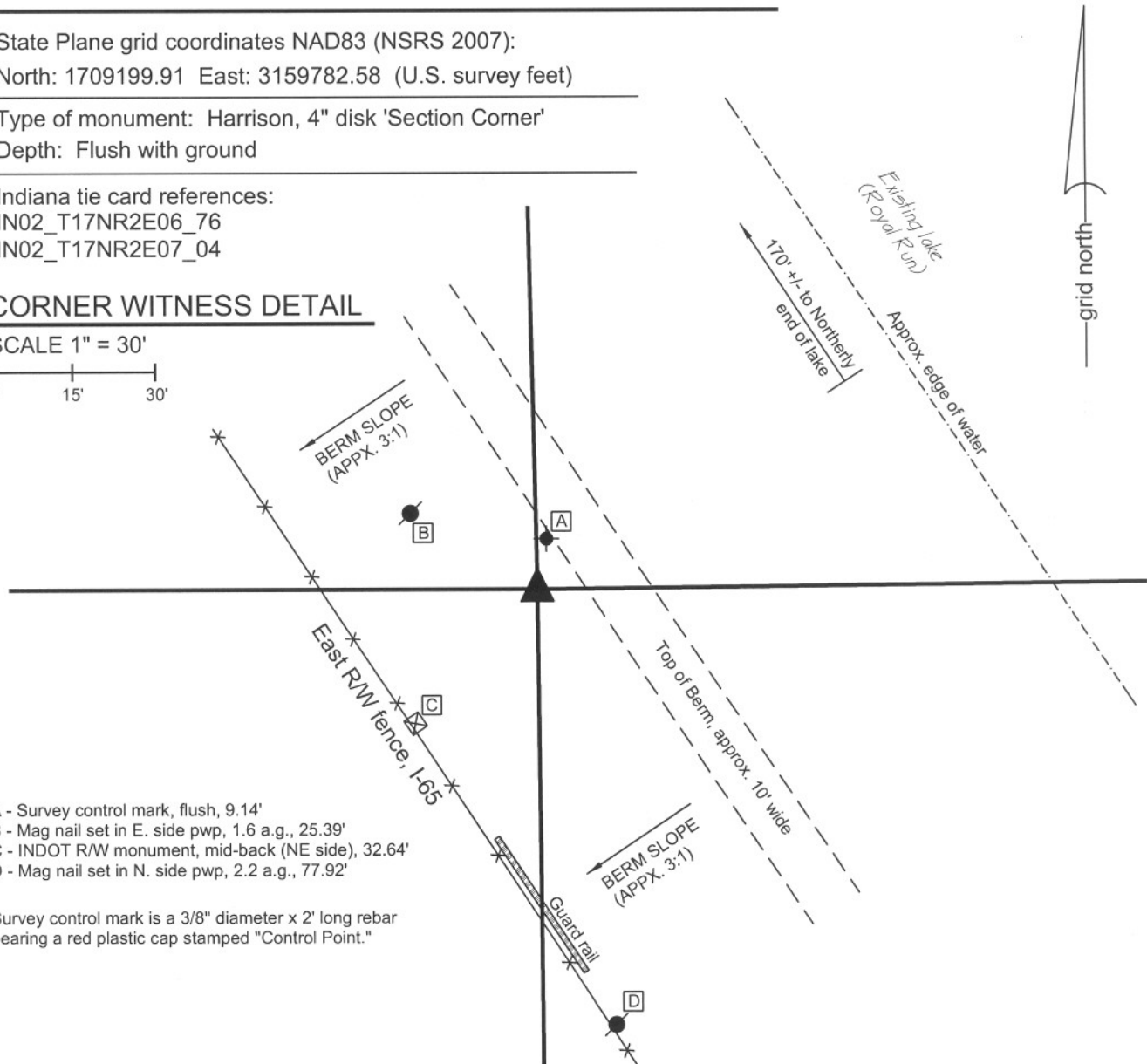
State Plane grid coordinates NAD83 (NSRS 2007):
North: 1709199.91 East: 3159782.58 (U.S. survey feet)

Type of monument: Harrison, 4" disk 'Section Corner'
Depth: Flush with ground

Indiana tie card references:
IN02_T17NR2E06_76
IN02_T17NR2E07_04

CORNER WITNESS DETAIL

SCALE 1" = 30'



- A - Survey control mark, flush, 9.14'
- B - Mag nail set in E. side pwp, 1.6 a.g., 25.39'
- C - INDOT R/W monument, mid-back (NE side), 32.64'
- D - Mag nail set in N. side pwp, 2.2 a.g., 77.92'

Survey control mark is a 3/8" diameter x 2' long rebar bearing a red plastic cap stamped "Control Point."

A previous Boone County tie card, dated July 11, 1969, states "no stone" and demonstrates a corner with two ties. It is known that the procedure of field crews from this office at that time was to set a section of a railroad rail on end at the position the crew determined to be the most likely position of the corner. The plat of Wimbledon at Royal Run, recorded in Plat Book 10, page 38, shows a railroad rail found and held as the corner. Earthwork associated with the construction of Wimbledon at Royal Run has caused a large earthen berm to be placed in this vicinity, parallel with Interstate 65. The rail may still be present but is under approximately eight feet of fill dirt. The position of the rail was calculated relative to center line control found for the adjoining neighborhoods in Wimbledon at Royal Run. The Harrison monument was set at the calculated position. Uncertainties of approximately 0.1' in all directions are associated with the relative location of the centerline control and the calculated corner. This corner was originally established in July, 1821.



Kenneth E. Hedge
Kenneth E. Hedge, County Surveyor

J. S. Swift
James S. Swift, IN LS 20200054
December 21, 2007

Section 6 T17N, R2E
▲
Section 7 T17N, R2E

Eagle Township

SECTION CORNER RECORD

SE 700-700

BOONE COUNTY SURVEYOR'S OFFICE

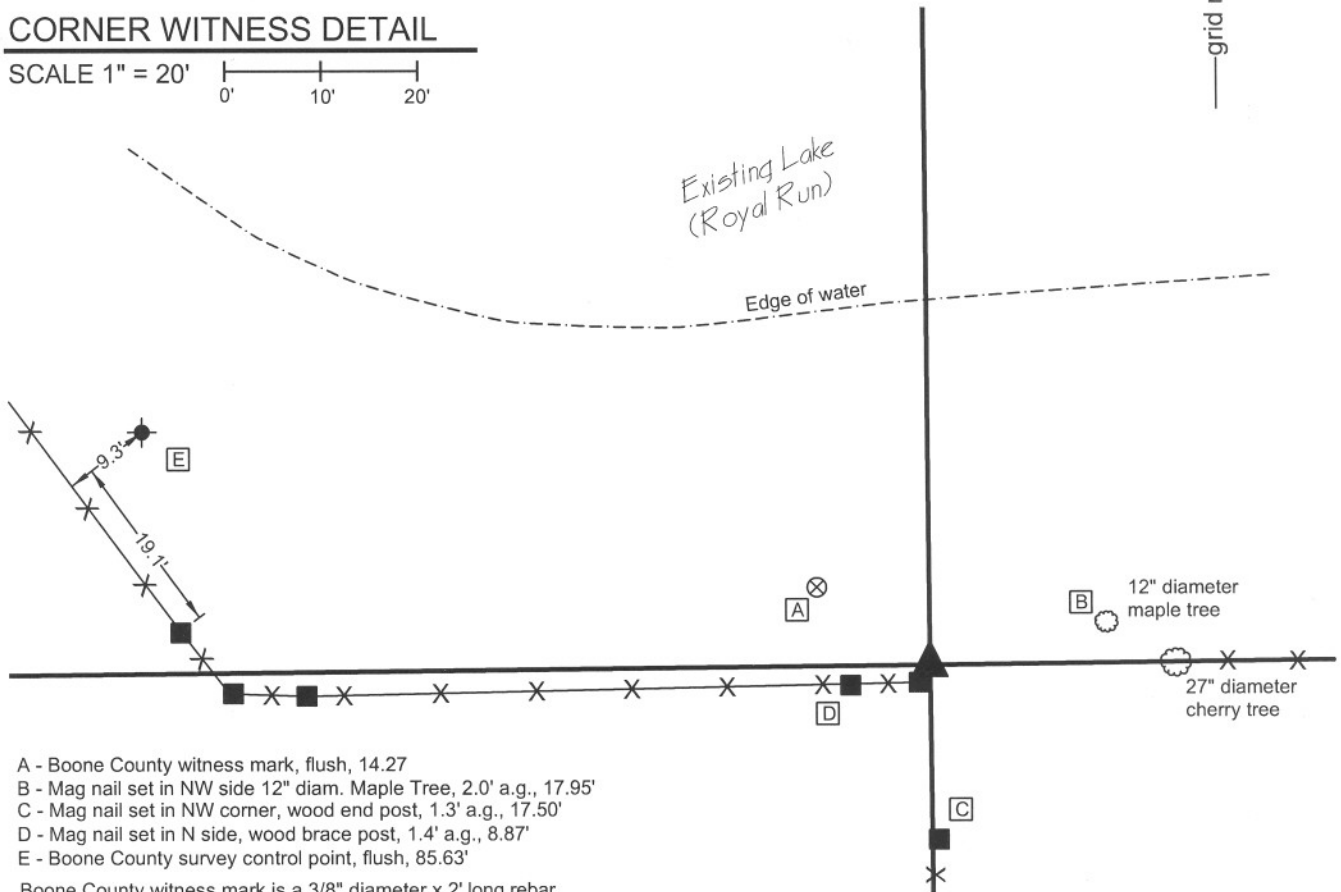
State Plane grid coordinates NAD83 (NSRS 2007):
 North: 1709226.0 East: 3162425.3 (U.S. survey feet)

Type of monument: Stone, (7" x 4" top dimensions)
 Depth: top at 0.2' above grade

Indiana tie card references:
 IN02_T17NR2E05_72 IN02_T17NR2E06_80
 IN02_T17NR2E07_08 IN02_T17NR2E08_00

CORNER WITNESS DETAIL

SCALE 1" = 20'



- A - Boone County witness mark, flush, 14.27
- B - Mag nail set in NW side 12" diam. Maple Tree, 2.0' a.g., 17.95'
- C - Mag nail set in NW corner, wood end post, 1.3' a.g., 17.50'
- D - Mag nail set in N side, wood brace post, 1.4' a.g., 8.87'
- E - Boone County survey control point, flush, 85.63'

Boone County witness mark is a 3/8" diameter x 2' long rebar bearing a metal cap stamped "Boone County Witness Point."

Survey control mark is a 3/8" diameter x 2' long rebar bearing a red plastic cap stamped "Control Point."

The stone found measures approximately 7 inches by 4 inches at the top with no particular markings. This stone is referenced on a tie card dated September 4, 1976 and has been held for numerous surveys in this vicinity. A BCS record dated November 24, 1865 references the corner as "a stone that was set" indicating that the stone had been established prior to this date, but does not contain a description of the stone. The point held as the corner is the approximate midpoint of the top of the stone. This corner was originally established in July, 1821.



Kenneth E. Hedge
 Kenneth E. Hedge, County Surveyor

J. S. Swift
 James S. Swift, IN LS 20200054
 December 21, 2007

Eagle Township

Section 6 T17N, R2E	Section 5 T17N, R2E
Section 7 T17N, R2E	Section 8 T17N, R2E

PHOTOGRAPHIC DOCUMENTATION

Date of photography: 10/05/2007

Photograph of existing stone. The top of the stone is 7 inches by 4 inches and protrudes approximately 3 inches above the surface of the ground.



Photograph of stone and two corner posts in immediate proximity. Another corner post, being the terminus of an old north-south fence is 17.5 feet south of stone.

