

SECTION CORNER RECORD

NE 500-700

BOONE COUNTY SURVEYOR'S OFFICE

State Plane grid coordinates NAD83 (CORS96):

North: 1772667.44 East: 3161478.48 (U.S. survey feet)

Type of monument: Harrison, 4" disk 'Section Corner'

Depth: six inches below adjacent gravel road surface

Indiana tie card references:

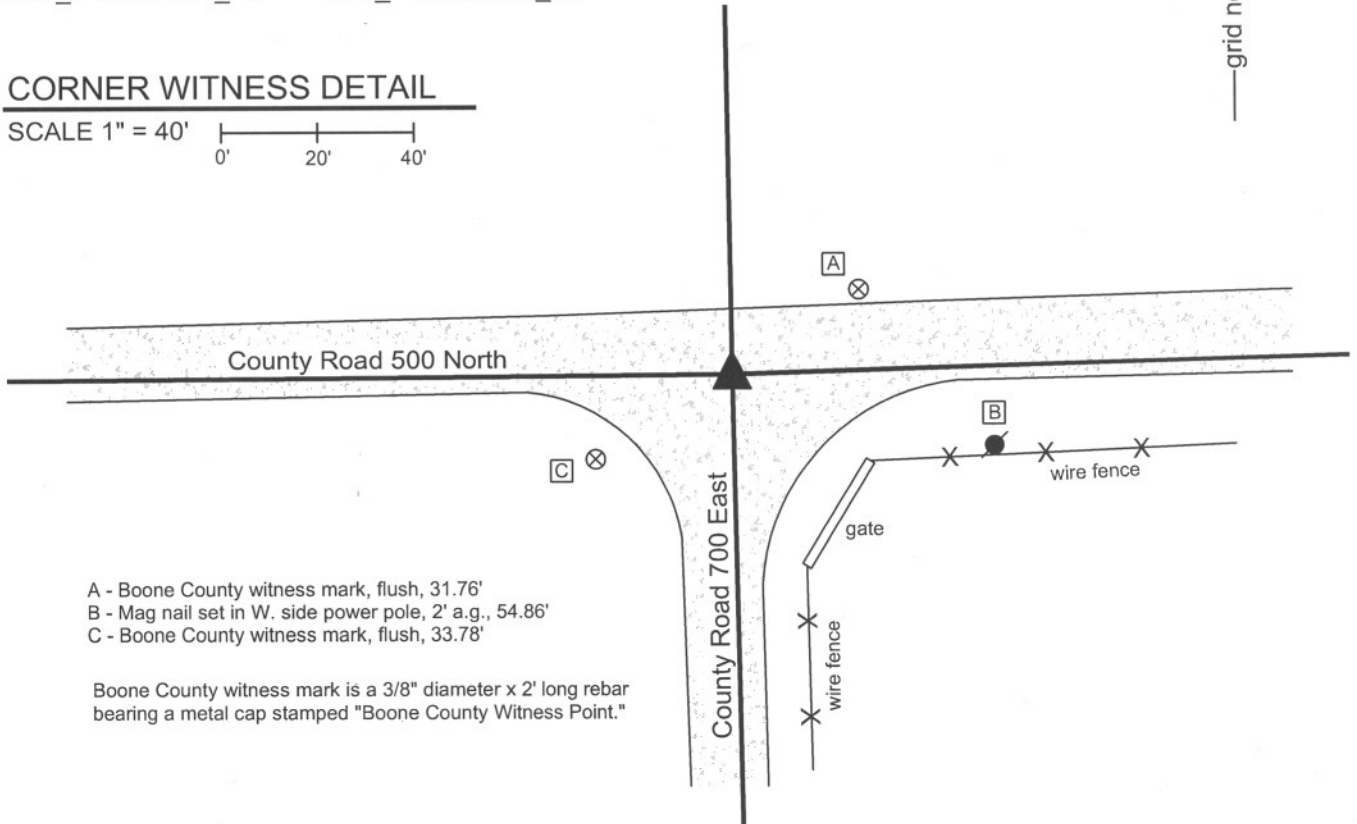
IN02_T19NR2E06_80 IN02_T19NR2E05_72

IN02_T19NR2E07_08 IN02_T19NR2E08_00



CORNER WITNESS DETAIL

SCALE 1" = 40'



- A - Boone County witness mark, flush, 31.76'
- B - Mag nail set in W. side power pole, 2' a.g., 54.86'
- C - Boone County witness mark, flush, 33.78'

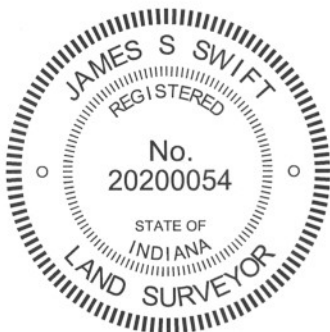
Boone County witness mark is a 3/8" diameter x 2' long rebar bearing a metal cap stamped "Boone County Witness Point."

The harrison monument was set over a stone found.

A BCS record of August 26 - 29, 1868 states "Reestablished from Beech stump, roots of a Oak and an Old Stake. Set Rock 12.9 by 8 marked +. A broken brick under it." A BCS tie card dated June 3, 1974 states "No Stone, Found Rail."

This corner was excavated on March 16, 2011. Prior to excavation, a vertical section of railroad rail was found at 2 inches below the surface of the gravel road. Excavation revealed the stone described in the 1868 record at 16 inches deep. With 8 inches of the top of the stone exposed, it measures 8 inches E-W by 9 inches N-S with a clearly visible etched + on the top. The stone is embedded in the clay layer below the road, with the top of the stone at the bottom of the road bed. A piece of brick was found next to the stone. The stone was held as marking the corner and left in place. The top 8 inches of the stone were encased in concrete and the harrison monument was set directly over the etched + on the top of the stone. The railroad rail, removed during excavation, had been 2.9 feet north and 0.2 foot west of the stone.

This corner was originally established as a wood post in July, 1821.



Kenneth E. Hedge
Kenneth E. Hedge, County Surveyor

James S. Swift
James S. Swift, IN LS 20200054
March 1, 2012

Marion Township

Section 6 T19N, R2E	Section 5 T19N, R2E
Section 7 T19N, R2E	Section 8 T19N, R2E

PHOTOGRAPHIC DOCUMENTATION

Date of photography: March 16, 2011

View of the stone as first exposed.



View of the stone from above and west.



View from above the stone, looking west along County Road 500 North.



View of the stone from above and south.



The stone from above shortly before being encased in concrete as part of setting the harrison monument over the stone.



For details and documentation, refer to related sheet "Section Corner Record."

SECTION CORNER RECORD

NE 500-750

BOONE COUNTY SURVEYOR'S OFFICE

State Plane grid coordinates NAD83 (CORS96):

North: 1772740.46 East: 3164109.43 (U.S. survey feet)

Type of monument: Harrison, 4" disk 'Section Corner'

Depth: six inches below adjacent gravel road surface

Indiana tie card references:

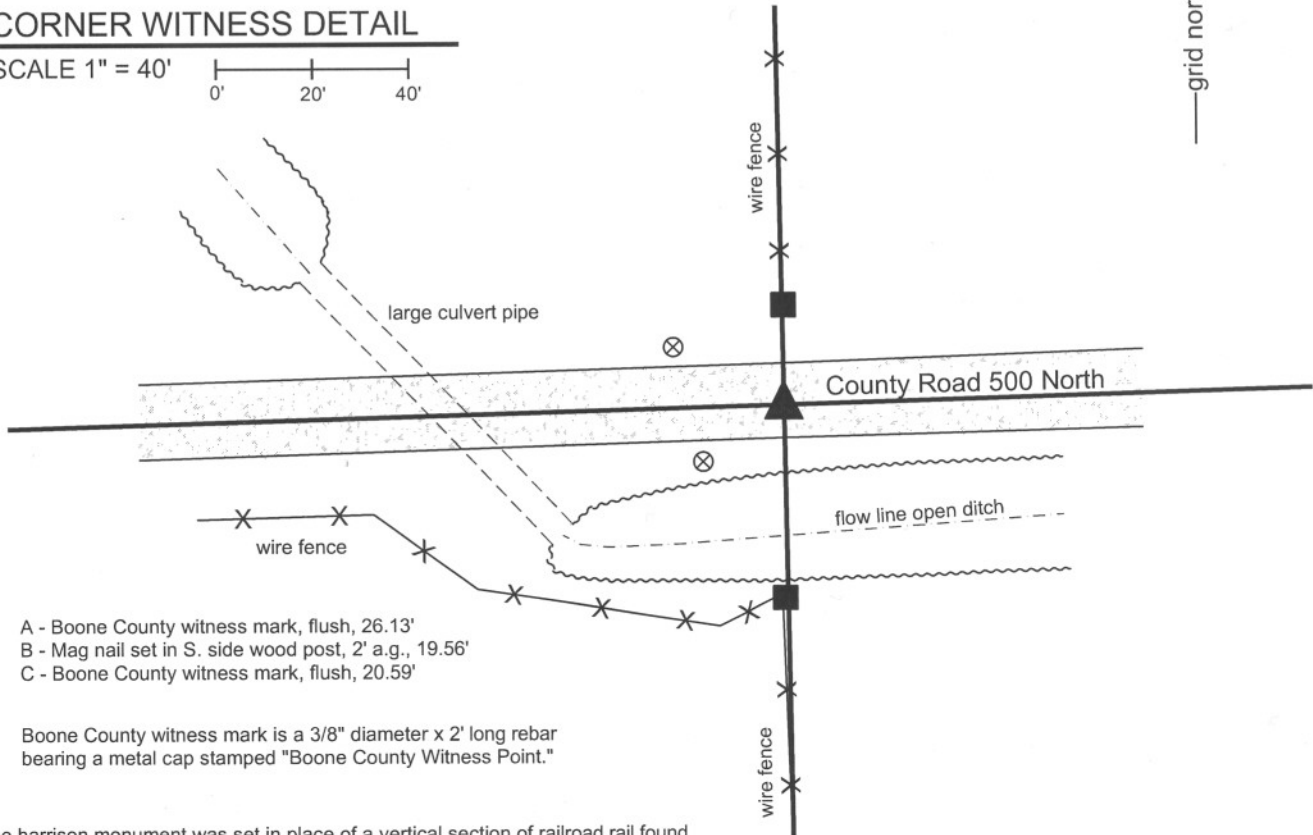
IN02_T19NR2E05_76

IN02_T19NR2E08_04

CORNER WITNESS DETAIL

SCALE 1" = 40'

0' 20' 40'



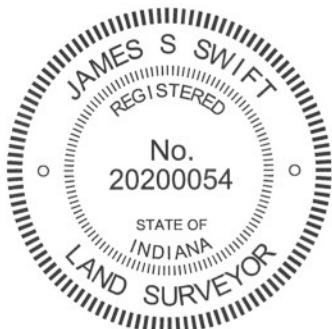
- A - Boone County witness mark, flush, 26.13'
- B - Mag nail set in S. side wood post, 2' a.g., 19.56'
- C - Boone County witness mark, flush, 20.59'

Boone County witness mark is a 3/8" diameter x 2' long rebar bearing a metal cap stamped "Boone County Witness Point."

The Harrison monument was set in place of a vertical section of railroad rail found.

A BCS record of April 22-24, 1884 states "Reest. by measure. Set Rock 14x10x6 + (in ditch). Rock 12x8x8 + brs South 25 links." A BCS record of August 8, 1894 states "Wit Rock See B, Sect. 8, south 25 links. Corner rock gone." A BCS tie card dated June 14, 1974 states "Found Rail."

This corner was excavated on March 16, 2011. A vertical section of railroad rail was found at 11 inches deep in the gravel road. Fill material was found to 2 feet deep and below, which is deeper than the surrounding ground. This fits with the chain of record that indicates that the corner was previously in the ditch. Observation of the ditch to the east/southwest and the northwest indicates that the ditch might certainly have passed across the corner. The ditch has been routed through a large culvert in the immediate vicinity of the corner and the road filled in to run level and straight in this vicinity. The bank of the ditch to the south drops quickly next to the road and it is believed that the witness rock referred to in the 1884 and 1894 records is also gone. The position of the found rail fits with local evidence in the form of being in the center of the East-West road and at the extensions of fences to the north and south. The railroad rail was accepted as the best available evidence of the corner. The rail was removed and replaced with a Harrison monument in the same position. This corner was originally established as a wood post in July, 1821.



Kenneth E. Hedge
 Kenneth E. Hedge, County Surveyor

James S. Swift
 James S. Swift, IN LS 20200054
 March 1, 2012

Marion Twp

Section 5
T19N, R2E

Section 8
T19N, R2E

SECTION CORNER RECORD

NE 500-800

BOONE COUNTY SURVEYOR'S OFFICE

State Plane grid coordinates NAD83 (CORS96):

North: 1772813.88 East: 3166741.30 (U.S. survey feet)

Type of monument: Harrison, 4" disk 'Section Corner'

Depth: One inch below adjacent road surface

Indiana tie card references:

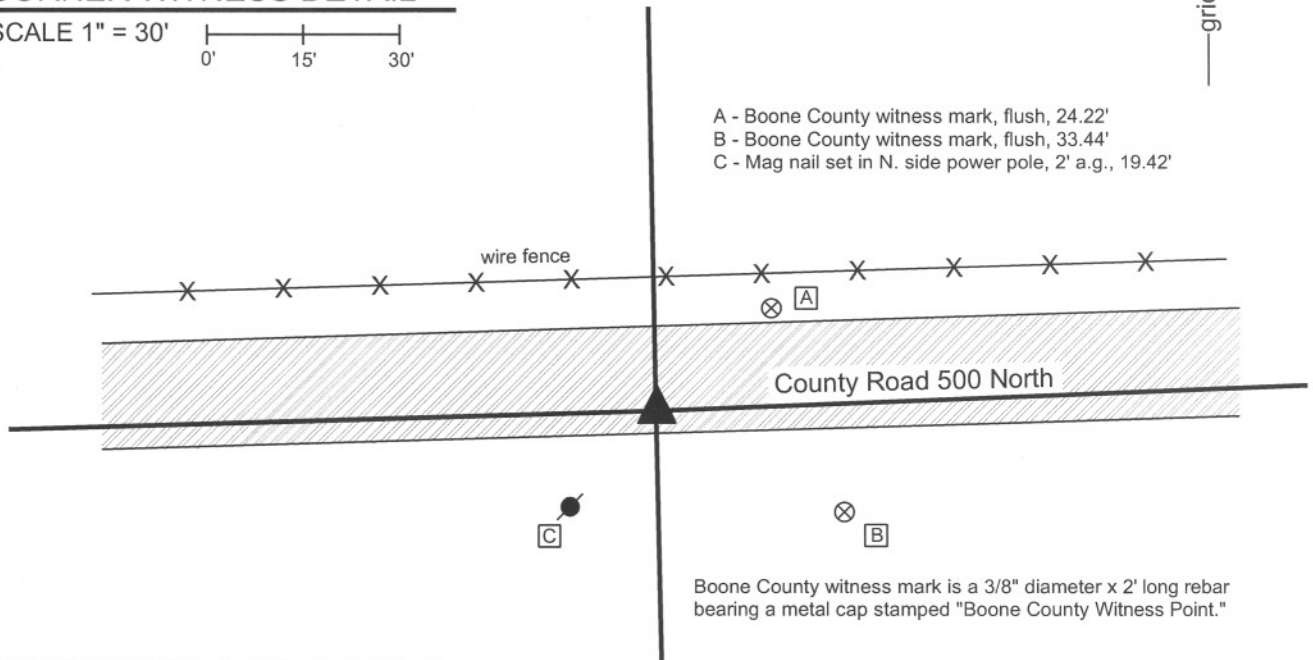
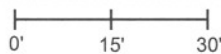
IN02_T19NR2E05_80 IN02_T19NR2E04_72

IN02_T19NR2E08_08 IN02_T19NR2E09_00



CORNER WITNESS DETAIL

SCALE 1" = 30'



- A - Boone County witness mark, flush, 24.22'
- B - Boone County witness mark, flush, 33.44'
- C - Mag nail set in N. side power pole, 2' a.g., 19.42'

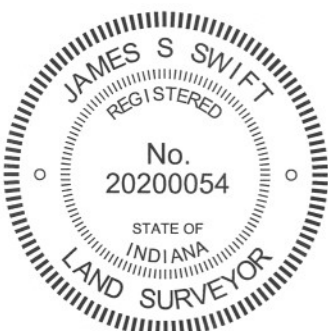
Boone County witness mark is a 3/8" diameter x 2' long rebar bearing a metal cap stamped "Boone County Witness Point."

The harrison monument was set over a stone found.

A BCS record of April 22-24, 1884 states with respect to this and the corner 1/4 mile south "Points found by measure." The corner is also specifically noted in a record of Aug. 15, 1901, though the monument marking the corner is not described in this record. A BCS tie card dated August 11, 1974 states "No Stone Found." A BCS tie card dated January 18, 1994 shows the corner as a "buggy axel". A tie card provided by the Indiana Department of Transportation, dated April 27, 2005 shows the corner as a mag nail.

This corner was excavated on September 26, 2011. Prior to excavation a mag nail was found per the INDOT tie card. Excavation revealed a 1 inch diameter iron pin found at 8 inches deep, below the mag nail. This monument is believed to represent the "buggy axel" shown for in the 1994 tie card. The iron pin was removed and determined to be a hollow iron pipe, 24 inches long, with a solid end which had been at the top. The source of this monument is not known. It does not match the characteristics of other monuments found associated with 1974 tie cards. Further excavation revealed a stone found at 13 deep. With the top 12 inches of the stone exposed, it measured 6 inches N-S by 5 inches E-W. It is estimated that the total height of the stone was 15-17 inches. The stone was vertical, oriented in cardinal directions and embedded in the clay layer below the road, with the top of the stone at the bottom of the road bed. The stone was accepted as the best available evidence of the corner. The stone was left in place, with the top 3 inches encased in concrete and the harrison monument was set directly over the top, center of the stone. The mag nail and iron pipe, both removed during excavation, had been 1.8 feet north and 2.3 feet west of the stone.

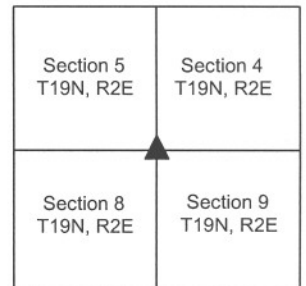
This corner was originally established as a wood post in July, 1821.



Kenneth E. Hedge
Kenneth E. Hedge, County Surveyor

James S. Swift
James S. Swift, IN LS 20200054
March 1, 2012

Marion Township



PHOTOGRAPHIC DOCUMENTATION

Date of photography: September 26, 2011

View of the stone as first exposed.



View of the stone from the west.



View of the stone from the north.



For details and documentation, refer to related sheet "Section Corner Record."

SECTION CORNER RECORD

NE 550-700

BOONE COUNTY SURVEYOR'S OFFICE

State Plane grid coordinates NAD83 (CORS96):

North: 1775312.89 East: 3161439.53 (U.S. survey feet)

Type of monument: Harrison, 4" disk 'Section Corner'

Depth: three inches above adjacent ground

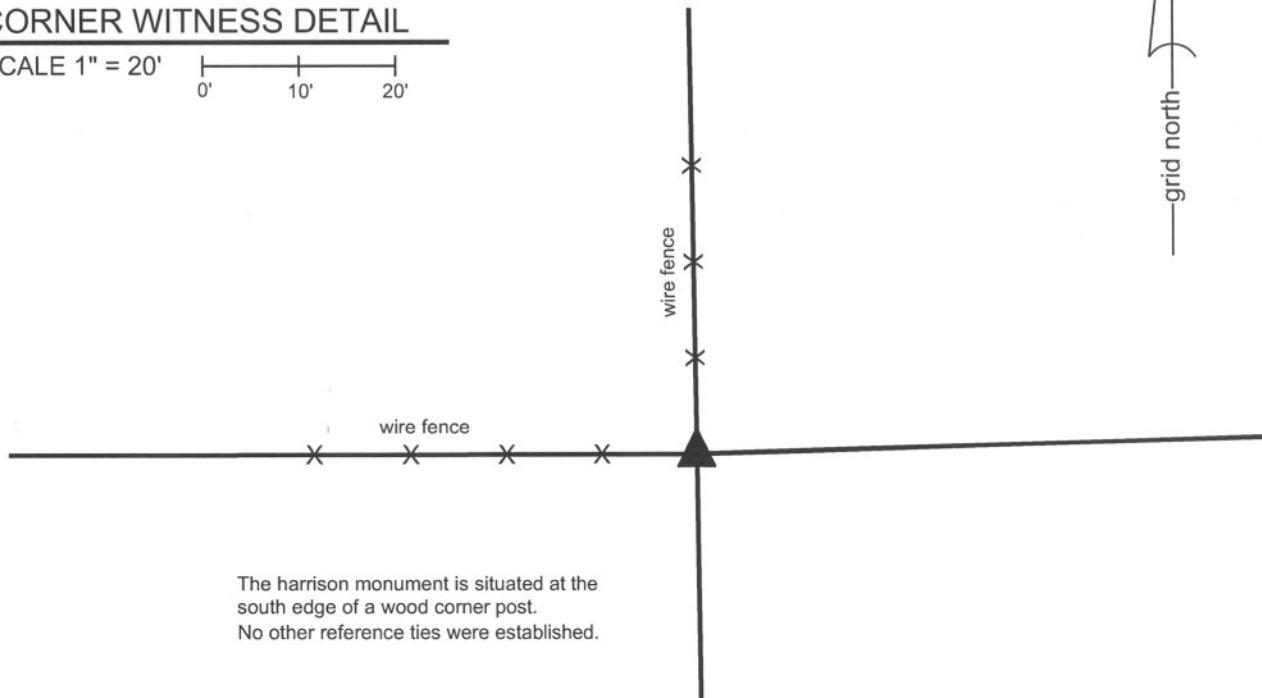
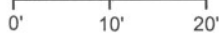
Indiana tie card references:

IN02_T19NR2E06_44

IN02_T19NR2E05_36

CORNER WITNESS DETAIL

SCALE 1" = 20'



The harrison monument is situated at the south edge of a wood corner post. No other reference ties were established.

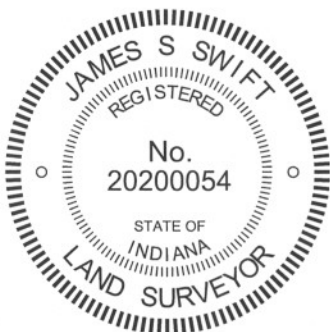
The harrison monument was set over a stone found.

A BCS record of May 1st, 1871 states "Reestablished from Ash. Set a Rock 13.8.7 +." No recent BCS tie cards were found referencing this corner.

A tie card provided by the Indiana Department of transportation shows the corner as a wood post.

This corner was excavated on October 11, 2011. Prior to excavation a wood corner post was found with fence to the north and west. Excavation revealed the stone described in the 1871 record at 11 inches deep along the south edge of the corner post. With 7 inches of the stone exposed, it measures 8 inches N-S by 7 inches E-W. The full south side of the stone was exposed and was found to measure 13 inches tall. A clearly visible etched + is visible on the top, center of the stone. The stone was held as marking the corner. The top 7 inches of the stone were encased in concrete and a harrison monument was set directly over the etched +.

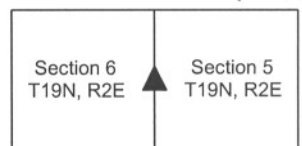
This corner was originally established as a wood post in July, 1821.



Kenneth E. Hedge
Kenneth E. Hedge, County Surveyor

James S. Swift
James S. Swift, IN LS 20200054
March 1, 2012

Marion Township



PHOTOGRAPHIC DOCUMENTATION

Date of photography: October 11 & 14, 2011

View of the stone as first exposed at the south edge of the base of the post.



Close-up view of the stone as first exposed.



Close-up view of the stone more fully exposed.



View of the post and the harrison monument set over the stone. View from the southeast.



View of the stone from above immediately prior to being encased in concrete as part of the establishment of the harrison monument.



For details and documentation, refer to related sheet "Section Corner Record."

SECTION CORNER RECORD

NE 550-800

BOONE COUNTY SURVEYOR'S OFFICE

State Plane grid coordinates NAD83 (2011):

North: 1775460.49 East: 3166692.68 (U.S. survey feet)

Type of monument: Harrison, 4" disk 'Section Corner'

Depth: Two inches above adjacent ground

Indiana tie card references:

IN02_T19NR2E05_44 IN02_T19NR2E04_36

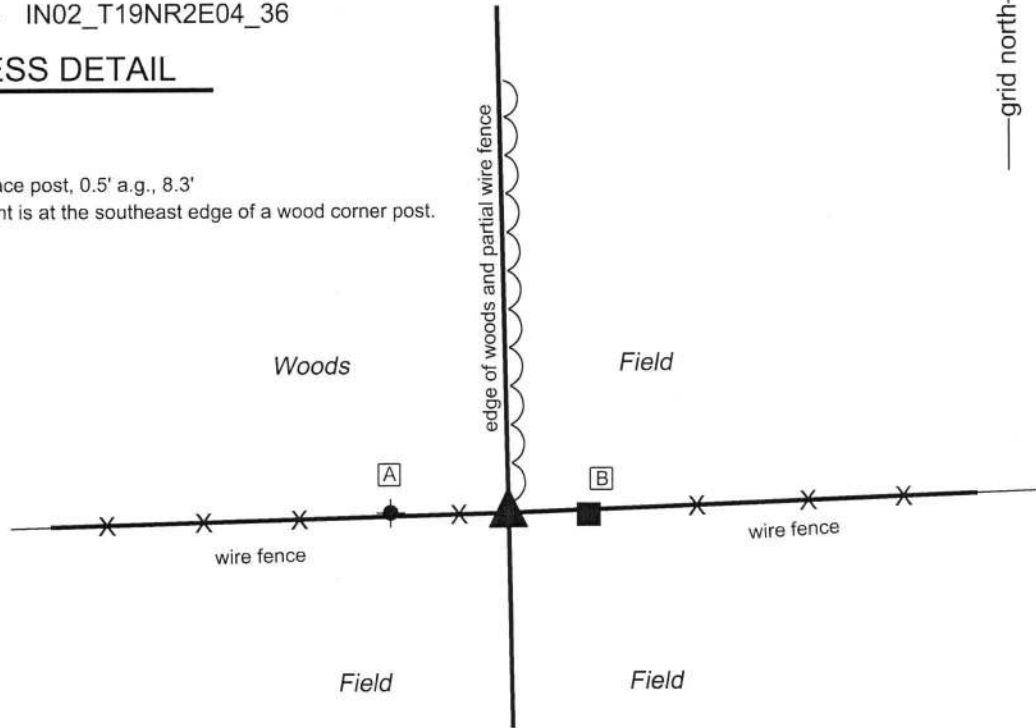
CORNER WITNESS DETAIL

SCALE 1" = 20'

A - T-post in fence row, 12.4'

B - Mag nail set in S. side brace post, 0.5' a.g., 8.3'

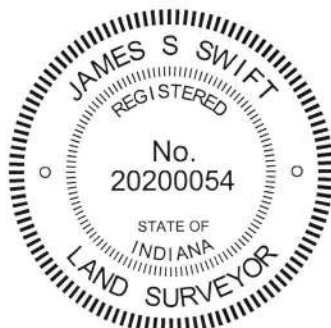
Note: the Harrison monument is at the southeast edge of a wood corner post.



The Harrison monument was set over a stone found.

A BCS record dated May 2, 1871 states, with respect to this corner, "Reestablished from intersection of lines and roots of both trees. Set Rock 12.6.6 +." No recent BCS tie cards were found referencing this corner.

This corner was excavated and monumented on October 14, 2011 but no documentation was published at that time. At the time of excavation, a wood post was found in an east-west fence, with fencing observed slightly to the north. A brace post was found approximately 9 feet east. Excavation around the corner post revealed the stone described in the 1871 record at the southeast edge of the post. The stone was found at 6 inches deep, mostly vertical, with a distinct etched "+" mark visible on the top of the stone. As found, the stone appeared to be leaning slightly to the north but otherwise undisturbed. The stone was removed, measured, and found to be 6 inches N-S by 6 inches E-W by 12 inches tall, as it would have been if standing completely vertically. The stone is clearly the same monument as described in 1871 record. It appeared to be generally undisturbed, though leaning slightly, as noted. The stone was replaced in the hole, stood vertically, with the base of the stone in the same position as it was originally found. A Harrison monument was set directly over the etched "+" on the top of the stone. The monument is approximately 1 foot SSE of the the old corner post. This corner was originally established as a wood post in 1821.



Kenneth E. Hedge
Kenneth E. Hedge, County Surveyor

James S. Swift
James S. Swift, IN LS 20200054
February 6, 2019

Marion Township

Section 5 T19N, R2E	Section 4 T19N, R2E
------------------------	------------------------