

SECTION CORNER RECORD

BOONE COUNTY SURVEYOR'S OFFICE

SE 050-100

State Plane grid coordinates NAD83 (2011):
 North: 1743158.99 East: 3129865.18 (U.S. survey feet)

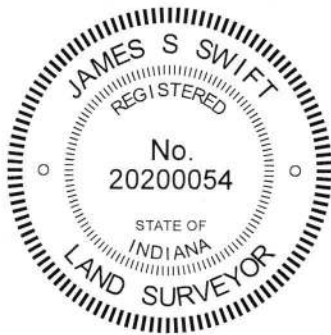
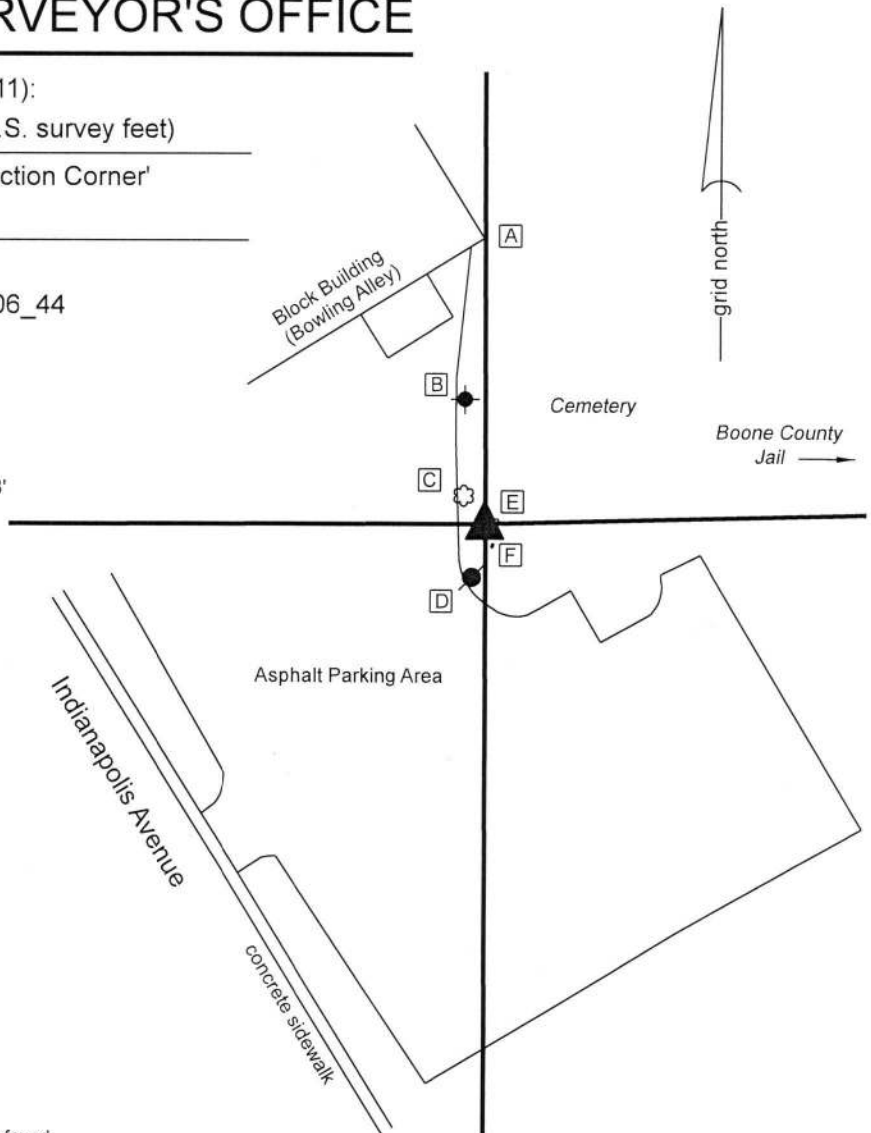
Type of monument: Harrison, 4" disk 'Section Corner'
 Depth: Flush with adjacent ground

Indiana tie card references:
 IN02_T18NR1E05_36 IN02_T18NR1E06_44

CORNER WITNESS DETAIL

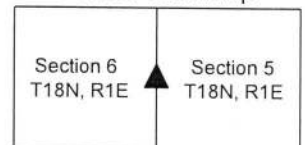
SCALE 1" = 60' 0' 30' 60'

- A - S.E. corner, block building, 89.0'
- B - Mag nail set in S. side, wood light pole, 2' a.g., 37.8'
- C - Mag nail set in E. side power pole, 2' a.g., 17.3'
- D - S.E. edge, 28 inch diameter maple, 8'
- C - S.W. corner, grave stone, Fries I. Conkright, 2.5'
- D - N.W. corner, grave stone, Minnie Rogers, 6.7'



The harrison monument was set over the base of an iron post found.
 A BCS record of July 13, 1871 states "Reestablished from both trees. Set two Rocks. One 7.6.3 + Top one 11,8,5 +." No recent BCS tie cards were found referencing this corner.
 Excavation was originally performed at this corner on November 12, 2013. Prior to excavation, a broken-off iron post in concrete was found providing the obvious physical evidence of the corner. A rebar bearing a metal cap stamped 'Carl Anderson Engr.,' referring to the former Boone County Surveyor, was found at the northeast edge of the concrete base for the post, 0.8 foot north and 0.3 foot east of the center of the post. The rebar appeared to have been set as close to the post as possible, given the presence of the concrete base. The position of the post works well with evidence and monumentation found for properties to the north and northwest. A survey by Mark Strong, LS #S0295, dated August 16, 1990 shows the corner as an 'ips' indicating iron pin set with no statement of how the corner was established or reference to the iron post or Anderson rebar. Reconstruction of the position of the corner with respect to found rebars bearing Mr. Strong's cap demonstrates that the position held for that survey is approximately 2.4 feet north and 0.4 foot east of the center of the iron post. A subsequent survey by Jessica Stapleton, LS 20600032, recorded in Survey Book 12, pages 30-31 in the Office of the Boone County Recorder, holds a computed position based on the Strong survey, but states that this position is 1.8 foot north of the 'cut-off fence post in concrete.'
 On November 12, 2013, excavation was performed at the corner with a limited extent to the east, due to the presence of existing graves. Excavation revealed that the iron post was anchored to a substantial base of concrete mixed with brick extending deep into the ground, clearly indicating that the post was an old corner post. No other evidence, including the rocks called for in the 1871, was found. It is noted that two graves are in immediate proximity to the corner and previous excavation, in the form of grave digging, must have occurred to the east of the corner. An effort to determine if the position of the corner as shown on the Strong survey was established with respect to an ancient description of the adjacent cemetery proved to not be fruitful. An 'Proof of Statement of Deed' in Proof of Deeds and Instruments, Volume 1, pages 69-72 in said Recorder's Office affirms that the original deed for the county poor farm, of which the cemetery was part, was destroyed in the fire which destroyed the Boone County records in October, 1856. No ancient description of the cemetery was found. The iron post, being the obvious physical evidence of the corner and matching well with deeds and evidence to the north and northwest, was held as marking the corner. The post was cut of below ground level and a Harrison monument was set directly over the post, anchored to the base of concrete and brick, in the same position of the post as found at ground level prior to excavation. Up to 2.5 feet of uncertainty is attributed to the position of the corner with respect to the interpretations of the corner per the aforementioned surveys.
 This corner was originally established as a wood post in 1820.

Center Township



Kenneth E. Hedge *James S. Swift*
 Kenneth E. Hedge, County Surveyor James S. Swift, IN LS 20200054 July 23, 2019

SECTION CORNER RECORD

SE 050-200

BOONE COUNTY SURVEYOR'S OFFICE

State Plane grid coordinates NAD83 (2011):

North: 1743301.68 East: 3135193.24 (U.S. survey feet)

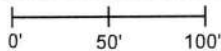
Type of monument: Stone, top / high point

Depth: Top of stone at four inches above grade

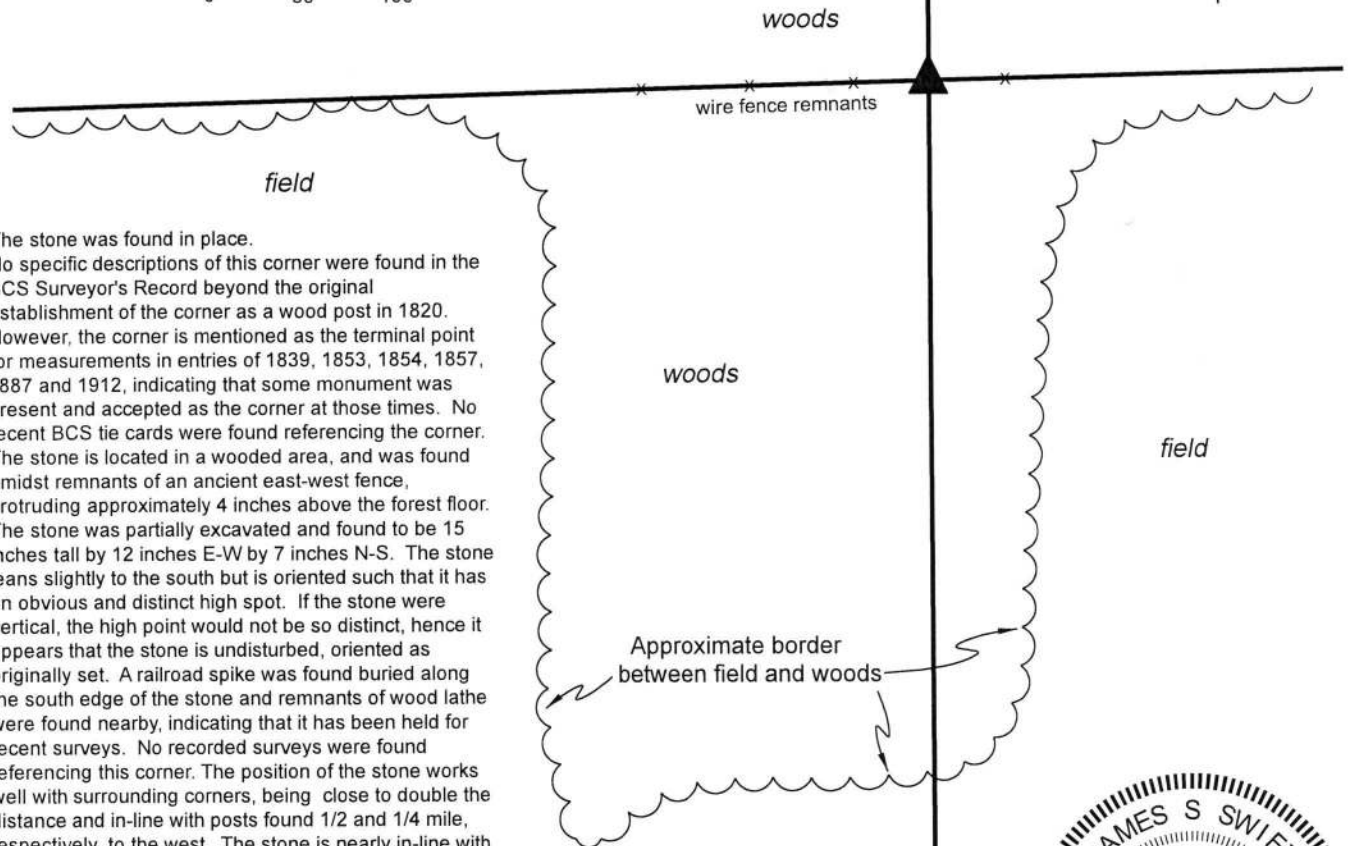
Indiana tie card references:

IN02_T18NR1E05_44 IN02_T18NR1E04_36

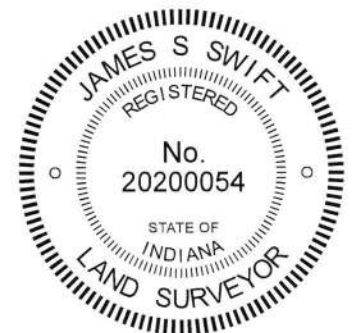
CORNER WITNESS DETAIL

SCALE 1" = 100' 

The stone is clearly witnessed by a fiberglass post and a steel post. No specific distance ties are provided.

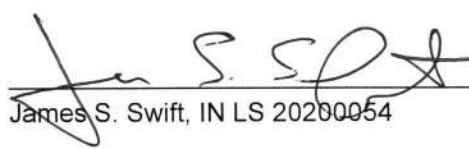


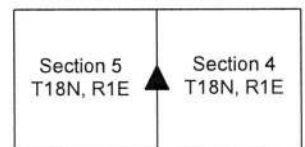
The stone was found in place. No specific descriptions of this corner were found in the BCS Surveyor's Record beyond the original establishment of the corner as a wood post in 1820. However, the corner is mentioned as the terminal point for measurements in entries of 1839, 1853, 1854, 1857, 1887 and 1912, indicating that some monument was present and accepted as the corner at those times. No recent BCS tie cards were found referencing the corner. The stone is located in a wooded area, and was found amidst remnants of an ancient east-west fence, protruding approximately 4 inches above the forest floor. The stone was partially excavated and found to be 15 inches tall by 12 inches E-W by 7 inches N-S. The stone leans slightly to the south but is oriented such that it has an obvious and distinct high spot. If the stone were vertical, the high point would not be so distinct, hence it appears that the stone is undisturbed, oriented as originally set. A railroad spike was found buried along the south edge of the stone and remnants of wood lathe were found nearby, indicating that it has been held for recent surveys. No recorded surveys were found referencing this corner. The position of the stone works well with surrounding corners, being close to double the distance and in-line with posts found 1/2 and 1/4 mile, respectively, to the west. The stone is nearly in-line with the section corners to the north and south, with the high point of the stone 0.5 foot east of a straight line connecting those corners. With respect to the original federal survey, the stone is 4.5 feet south of a proportional position computed with respect to the variation between measured dimensions and original federal dimensions. The stone was held as marking the corner. The distinct high point, near the west edge of the stone is held as the specific location of the corner. An orange fiberglass lathe stamped 'Survey Marker' and a steel post were set beside the stone to witness its position.



Center Township


 Kenneth E. Hedge, County Surveyor


 James S. Swift, IN LS 20200054



March 6, 2019

SECTION CORNER RECORD

SE 100-150

BOONE COUNTY SURVEYOR'S OFFICE

State Plane grid coordinates NAD83 (NSRS 2007):

North: 1740591.16 East: 3132533.95 (U.S. survey feet)

Type of monument: Harrison, 4" disk 'Section Corner'

Depth: One inch below adjacent road surface

Indiana tie card references:

IN02_T18NR1E05_76

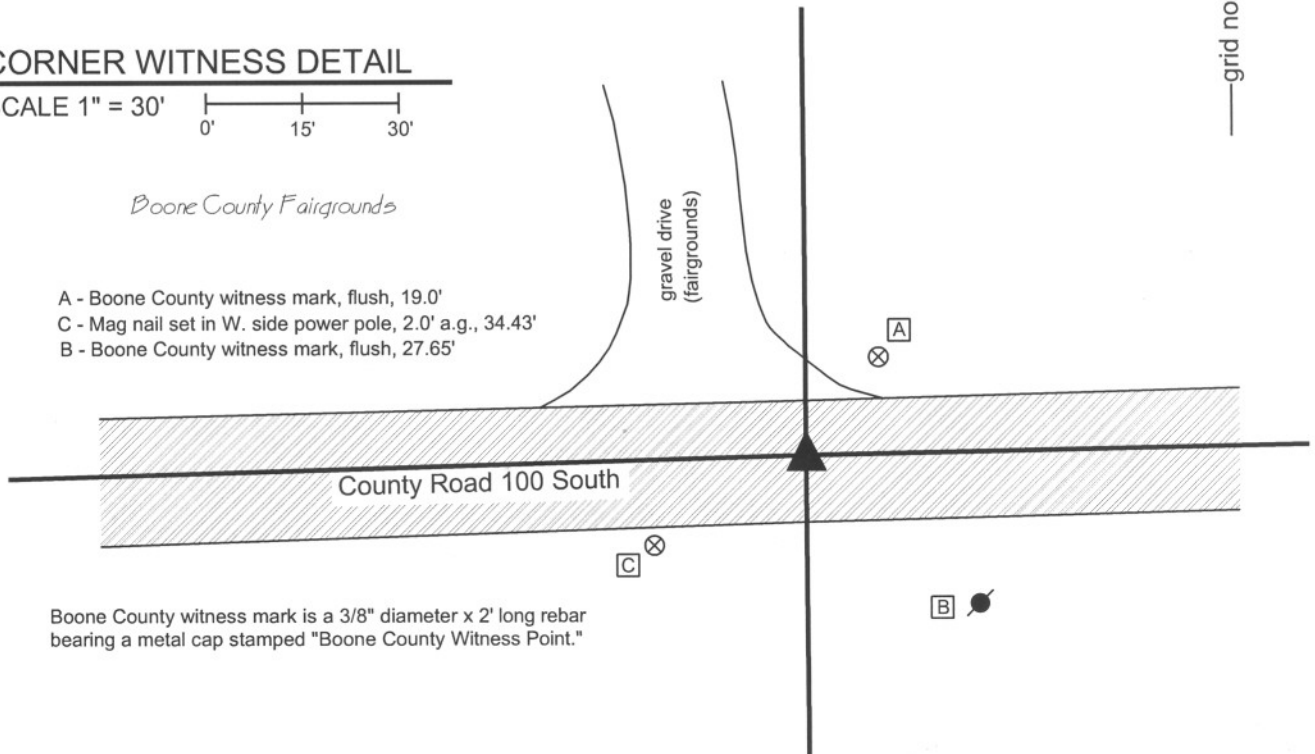
IN02_T18NR1E08_04

CORNER WITNESS DETAIL

SCALE 1" = 30'
0' 15' 30'

Boone County Fairgrounds

- A - Boone County witness mark, flush, 19.0'
- C - Mag nail set in W. side power pole, 2.0' a.g., 34.43'
- B - Boone County witness mark, flush, 27.65'



Boone County witness mark is a 3/8" diameter x 2' long rebar bearing a metal cap stamped "Boone County Witness Point."

The harrison monument was set in place of a harrison monument found and a partial steel fence post found.

A BCS tie card dated April 29, 1992 shows the corner as a cut-off steel fence post found. This corner is mentioned several times in the BCS Surveyor's Record but no description of a monument was found in the record.

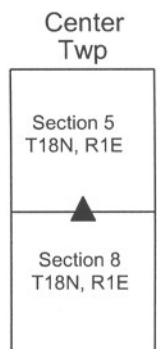
This corner was excavated on October 22, 2009. Prior to excavation a harrison monument was visible at the surface of the road. No documentation was found for this monument. The harrison monument was removed and a broken-off steel fence post of the type commonly referred to as a t-post was found at 18 inches deep. The steel post was found to be 3 feet long and was approximately below the harrison monument. The top of the post was at the depth of the bottom of the road and top of the underlying layer of clay. An area extending 4.5 feet West and 2.5 feet North, South and East was excavated to at least 4 inches into the clay layer below the road. No other evidence of the corner was found. A new harrison monument was set at the position of the found steel fence post.

This corner was originally established as a wood post in June, 1820.



Kenneth E. Hedge
 Kenneth E. Hedge, County Surveyor

James S. Swift
 James S. Swift, IN LS 20200054
 July 14, 2010



SECTION CORNER RECORD

SE 100-200

BOONE COUNTY SURVEYOR'S OFFICE

State Plane grid coordinates NAD83 (NSRS 2007):

North: 1740642.23 East: 3135205.97 (U.S. survey feet)

Type of monument: Harrison, 4" disk 'Section Corner'

Depth: One inch below adjacent road surface

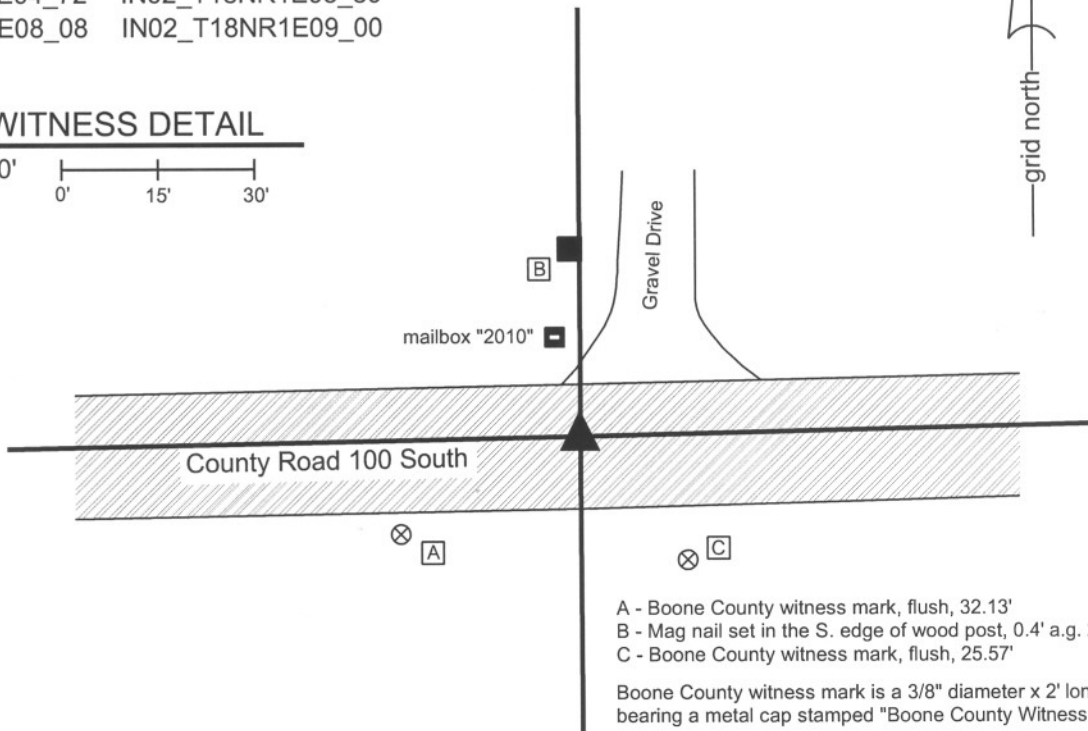
Indiana tie card references:

IN02_T18NR1E04_72 IN02_T18NR1E05_80

IN02_T18NR1E08_08 IN02_T18NR1E09_00

CORNER WITNESS DETAIL

SCALE 1" = 30'



- A - Boone County witness mark, flush, 32.13'
- B - Mag nail set in the S. edge of wood post, 0.4' a.g. 27.38'
- C - Boone County witness mark, flush, 25.57'

Boone County witness mark is a 3/8" diameter x 2' long rebar bearing a metal cap stamped "Boone County Witness Point."

The harrison monument was set over a stone found.

A BCS record of February 9, 1887 states "Re-est. by measure from H-H sec. 9. Set Rock 4,14,19 +" A BCS tie card dated August 16, 1967 shows the corner but makes no mention of a monument. A BCS reference sheet dated July 8, 1989 discusses uncertainties associated with a PK nail found in the vicinity of the corner. A BCS tie card dated June 20, 1991 shows the corner as a railroad rail found. A BCS tie card dated October 21, 2005 shows the corner as a harrison monument with no documentation of source.

This corner was excavated on October 19, 2009. Prior to excavation, a harrison monument was visible at the surface of the road. Excavation revealed a steel railroad rail found on end at 12 inches deep. A rebar was also found on the southwest side of the railroad rail. The harrison monument had been over the rebar. Both the rebar and the rail were removed. A stone was found at 18 inches deep, 1.6 feet North and 2.6 feet East of the position of the harrison monument. The stone is completely embedded in the clay layer below the road bed, with the top of the stone at the top of the clay layer. The stone is 14 inches tall and is not oriented with the cardinal directions. The top of the stone measures 12 inches in the NE-SW dimension and a spur at the bottom of the stone on the southwest side protrudes 2 inches for a total 14 inches. The top of the stone measures 6 inches wide in the NW-SE dimension and a spur on the southeast side protrudes for 3 inches for a total of 9 inches. No visible marks were found. The written record states that the stone is 4,14,9. The stone found measures 14,14,9. The found stone also fits well with the local evidence in the E-W dimension in the form of an old post on the north side of the road. The harrison, railroad rail and rebar were all west of this post. The stone was accepted as the corner and a harrison monument was set over the top center of the main ridge of the stone.

This corner was originally established as a wood post in June, 1820.



Kenneth E. Hedge
 Kenneth E. Hedge, County Surveyor

James S. Swift
 James S. Swift, IN LS 20200054
 July 14, 2010

Center Township

Section 5 T18N, R1E	Section 4 T18N, R1E
Section 8 T18N, R1E	Section 9 T18N, R1E

PHOTOGRAPHIC DOCUMENTATION

Date of photography: October 19, 2009

View of the stone as first exposed.



View of the stone more fully exposed.
View from the west.



View from the south, looking across the stone (hidden behind the corner of pavement), and north to the old post on the north side of the road.



Similar view to above. View from the southwest.



Close-up of the stone as found and exposed.



For details and documentation, refer to related sheet "Section Corner Record."