

SECTION CORNER RECORD

NE 500-800

BOONE COUNTY SURVEYOR'S OFFICE

State Plane grid coordinates NAD83 (CORS96):

North: 1772813.88 East: 3166741.30 (U.S. survey feet)

Type of monument: Harrison, 4" disk 'Section Corner'

Depth: One inch below adjacent road surface

Indiana tie card references:

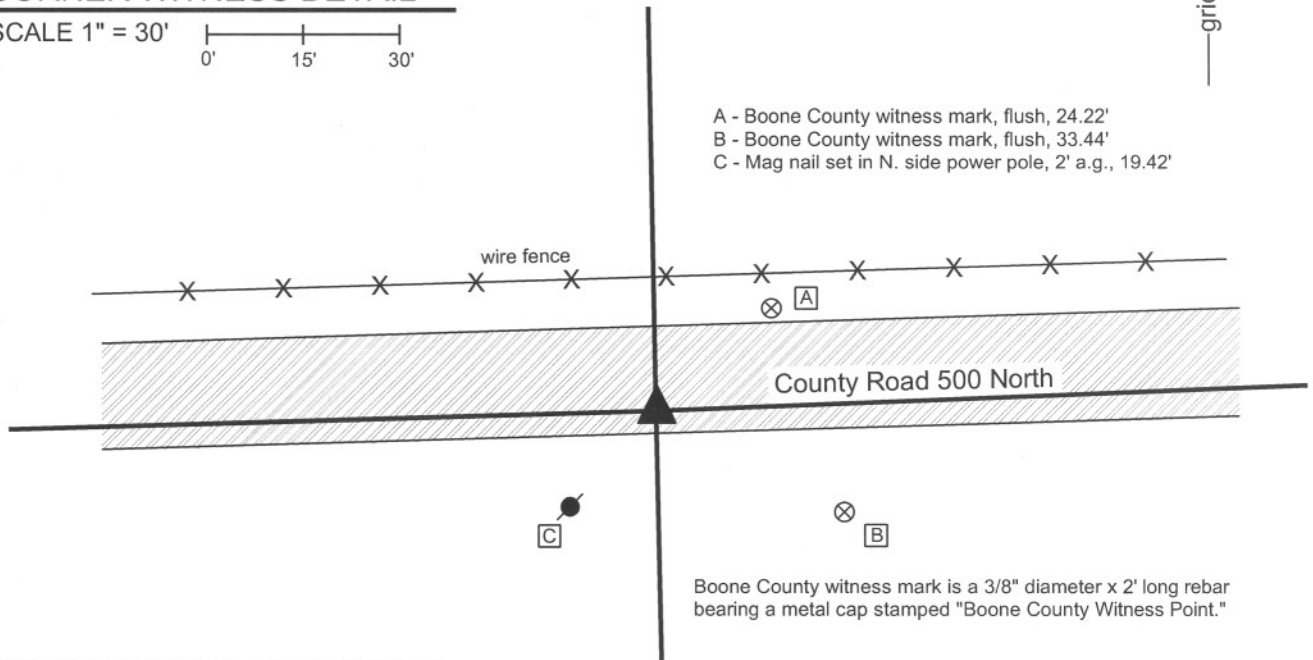
IN02_T19NR2E05_80 IN02_T19NR2E04_72

IN02_T19NR2E08_08 IN02_T19NR2E09_00



CORNER WITNESS DETAIL

SCALE 1" = 30'
0' 15' 30'

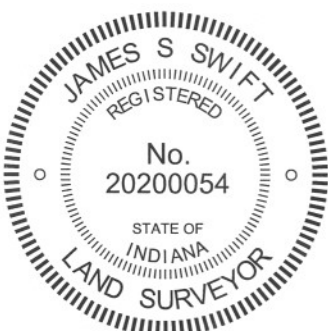


The harrison monument was set over a stone found.

A BCS record of April 22-24, 1884 states with respect to this and the corner 1/4 mile south "Points found by measure." The corner is also specifically noted in a record of Aug. 15, 1901, though the monument marking the corner is not described in this record. A BCS tie card dated August 11, 1974 states "No Stone Found." A BCS tie card dated January 18, 1994 shows the corner as a "buggy axel". A tie card provided by the Indiana Department of Transportation, dated April 27, 2005 shows the corner as a mag nail.

This corner was excavated on September 26, 2011. Prior to excavation a mag nail was found per the INDOT tie card. Excavation revealed a 1 inch diameter iron pin found at 8 inches deep, below the mag nail. This monument is believed to represent the "buggy axel" shown for in the 1994 tie card. The iron pin was removed and determined to be a hollow iron pipe, 24 inches long, with a solid end which had been at the top. The source of this monument is not known. It does not match the characteristics of other monuments found associated with 1974 tie cards. Further excavation revealed a stone found at 13 deep. With the top 12 inches of the stone exposed, it measured 6 inches N-S by 5 inches E-W. It is estimated that the total height of the stone was 15-17 inches. The stone was vertical, oriented in cardinal directions and embedded in the clay layer below the road, with the top of the stone at the bottom of the road bed. The stone was accepted as the best available evidence of the corner. The stone was left in place, with the top 3 inches encased in concrete and the harrison monument was set directly over the top, center of the stone. The mag nail and iron pipe, both removed during excavation, had been 1.8 feet north and 2.3 feet west of the stone.

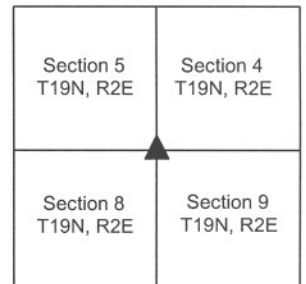
This corner was originally established as a wood post in July, 1821.



Kenneth E. Hedge
Kenneth E. Hedge, County Surveyor

James S. Swift
James S. Swift, IN LS 20200054
March 1, 2012

Marion Township



PHOTOGRAPHIC DOCUMENTATION

Date of photography: September 26, 2011

View of the stone as first exposed.



View of the stone from the west.



View of the stone from the north.



For details and documentation, refer to related sheet "Section Corner Record."

SECTION CORNER RECORD

NE 500-850

BOONE COUNTY SURVEYOR'S OFFICE

State Plane grid coordinates NAD83 (CORS96):

North: 1772920.34 East: 3169415.41 (U.S. survey feet)

Type of monument: Harrison, 4" disk 'Section Corner'

Depth: one inch below adjacent road surface

Indiana tie card references:

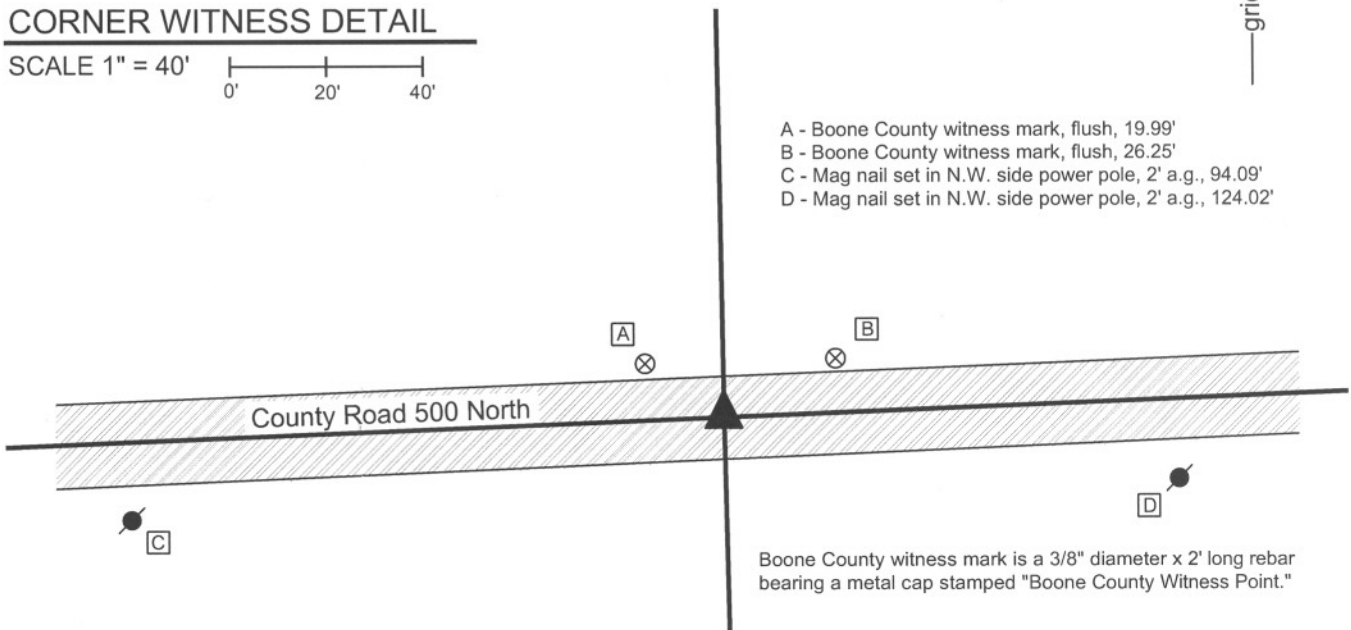
IN02_T19NR2E04_76

IN02_T19NR2E09_04



CORNER WITNESS DETAIL

SCALE 1" = 40'



- A - Boone County witness mark, flush, 19.99'
- B - Boone County witness mark, flush, 26.25'
- C - Mag nail set in N.W. side power pole, 2' a.g., 94.09'
- D - Mag nail set in N.W. side power pole, 2' a.g., 124.02'

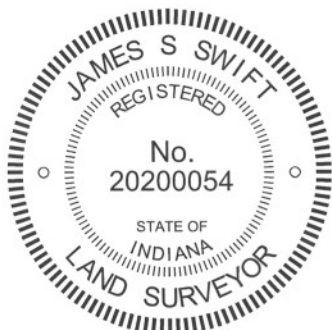
Boone County witness mark is a 3/8" diameter x 2' long rebar bearing a metal cap stamped "Boone County Witness Point."

The harrison monument was set over a stone found.

A BCS record of December 23-24, 1867 states Reestablished from Oak. Set a Rock 24.10.8 in. Marked + on side. Chopped Mark out of Oak." A BCS tie card dated July 16, 1974 states "No Stone."

This corner was excavated on September 23, 2011. Prior to excavation, a mag nail was found at the surface. Excavation revealed a 1/2 inch diameter rebar found at 6 inches deep. The rebar was bent, with 3 inches of the rebar pointed north and the remainder vertical. The vertical shaft of the rebar was approximately 0.25 foot west of the mag nail. Excavation also revealed a vertical section of railroad rail found at 8 inches deep. The rail was 0.4 foot east and 0.7 foot north of the position of the mag nail originally found at the surface. Both the 1/2 inch diameter rebar and the railroad rail represent the types of monuments set by BCS field crews during the summer of 1974. A wood stake was found at 10 inches deep, 1.1 foot west of the rail. Further excavation revealed a stone found at 10 inches deep. The stone was 1 foot west and 0.75 foot north of the rail. The wood stake had been situated along the south edge of the stone. With the top 10 inches of the stone exposed, the stone measures 10 inches E-W by 7 inches N-S. The stone is vertical and embedded in the clay layer below the road, with the top of the stone at the bottom of the road bed. The stone is of a rough surface. A vaguely visible mark was found on the south side, though positive identification of the mark is difficult due to the rough surface of the stone. The stone extends well below the exposed 10 inches, but the full height was not determined. This stone was accepted as being the stone described in the 1867 record and was held as marking the corner. The top 4 inches of the stone were embedded in concrete and the harrison monument was set over the top high point and top center of the stone. This point is 0.6 foot west and 1.4 feet north of the position of the mag nail as originally found and 0.75 feet north and 1 foot west of the rail as found. All monuments other than the stone were removed during excavation.

This corner was originally established as a wood post in July, 1821.



Kenneth E. Hedge
Kenneth E. Hedge, County Surveyor

James S. Swift
James S. Swift, IN LS 20200054
March 1, 2012

Marion Twp

Section 4
T19N, R2E

Section 9
T19N, R2E

PHOTOGRAPHIC DOCUMENTATION

Date of photography: September 23, 2011

View of the stone and rail as first exposed.



View of the stone and rail more fully exposed.

View from the west.



Close-up of the stone.



View of the stone after the rail was removed.



For details and documentation, refer to related sheet "Section Corner Record."

SECTION CORNER RECORD

NE 550-800

BOONE COUNTY SURVEYOR'S OFFICE

State Plane grid coordinates NAD83 (2011):

North: 1775460.49 East: 3166692.68 (U.S. survey feet)

Type of monument: Harrison, 4" disk 'Section Corner'

Depth: Two inches above adjacent ground

Indiana tie card references:

IN02_T19NR2E05_44 IN02_T19NR2E04_36

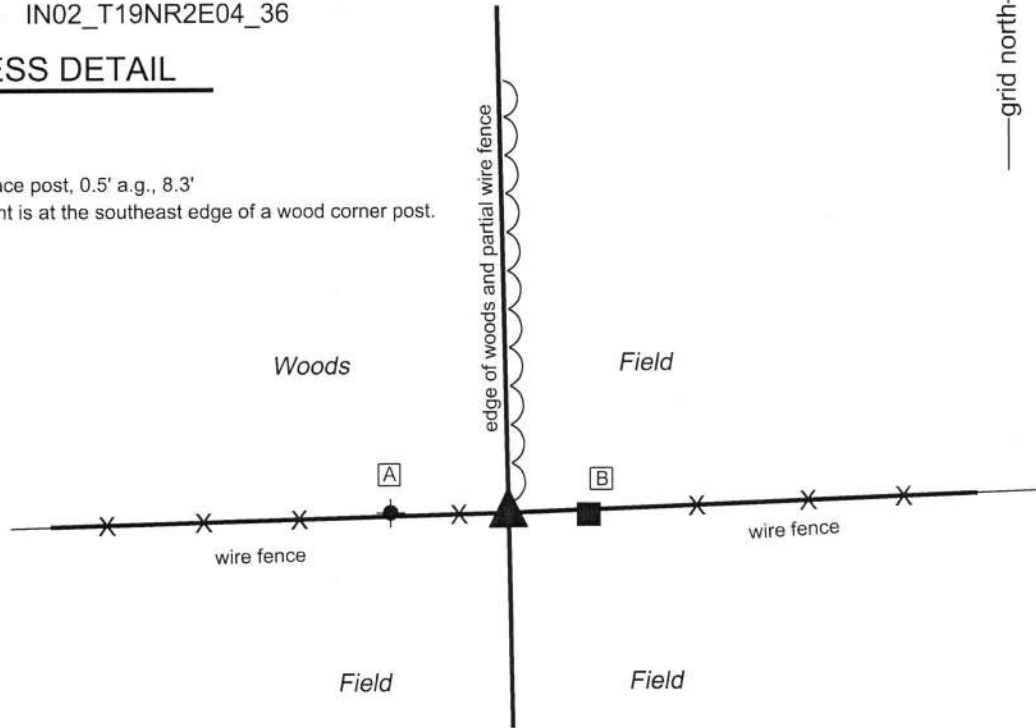
CORNER WITNESS DETAIL

SCALE 1" = 20'

A - T-post in fence row, 12.4'

B - Mag nail set in S. side brace post, 0.5' a.g., 8.3'

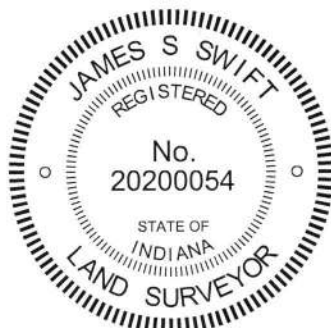
Note: the Harrison monument is at the southeast edge of a wood corner post.



The Harrison monument was set over a stone found.

A BCS record dated May 2, 1871 states, with respect to this corner, "Reestablished from intersection of lines and roots of both trees. Set Rock 12.6.6 +." No recent BCS tie cards were found referencing this corner.

This corner was excavated and monumented on October 14, 2011 but no documentation was published at that time. At the time of excavation, a wood post was found in an east-west fence, with fencing observed slightly to the north. A brace post was found approximately 9 feet east. Excavation around the corner post revealed the stone described in the 1871 record at the southeast edge of the post. The stone was found at 6 inches deep, mostly vertical, with a distinct etched "+" mark visible on the top of the stone. As found, the stone appeared to be leaning slightly to the north but otherwise undisturbed. The stone was removed, measured, and found to be 6 inches N-S by 6 inches E-W by 12 inches tall, as it would have been if standing completely vertically. The stone is clearly the same monument as described in 1871 record. It appeared to be generally undisturbed, though leaning slightly, as noted. The stone was replaced in the hole, stood vertically, with the base of the stone in the same position as it was originally found. A Harrison monument was set directly over the etched "+" on the top of the stone. The monument is approximately 1 foot SSE of the the old corner post. This corner was originally established as a wood post in 1821.



Kenneth E. Hedge
Kenneth E. Hedge, County Surveyor

James S. Swift
James S. Swift, IN LS 20200054
February 6, 2019

Marion Township

Section 5 T19N, R2E	Section 4 T19N, R2E
------------------------	------------------------

SECTION CORNER RECORD

BOONE COUNTY SURVEYOR'S OFFICE

NE 500-900

State Plane grid coordinates NAD83 (CORS96):

North: 1773024.11 East: 3172095.34 (U.S. survey feet)

Type of monument: Harrison, 4" disk 'Section Corner'

Depth: One inch below adjacent road surface

Indiana tie card references:

IN02_T19NR2E04_80 IN02_T19NR2E03_72

IN02_T19NR2E09_08 IN02_T19NR2E10_00

CORNER WITNESS DETAIL

SCALE 1" = 40'



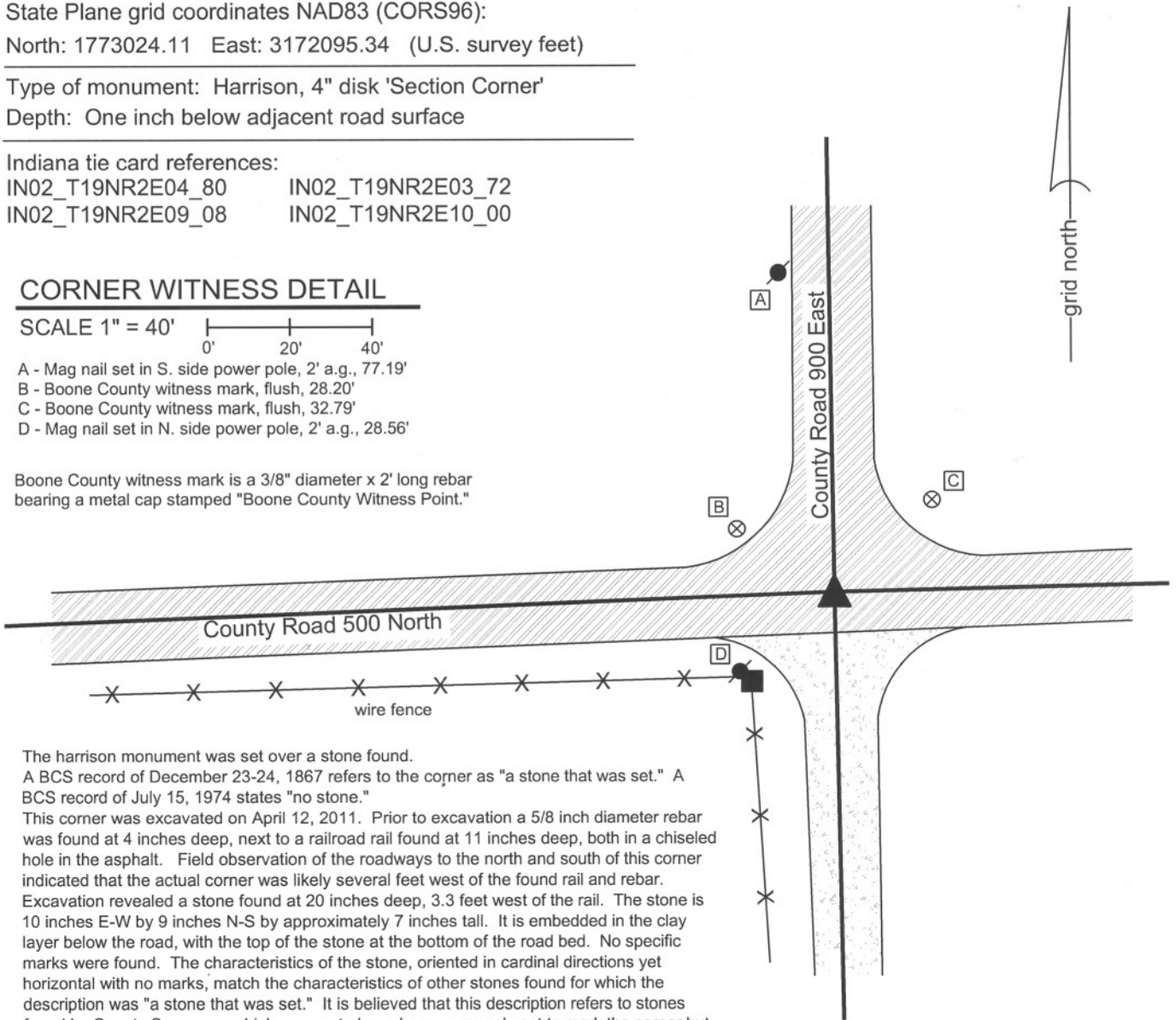
A - Mag nail set in S. side power pole, 2' a.g., 77.19'

B - Boone County witness mark, flush, 28.20'

C - Boone County witness mark, flush, 32.79'

D - Mag nail set in N. side power pole, 2' a.g., 28.56'

Boone County witness mark is a 3/8" diameter x 2' long rebar bearing a metal cap stamped "Boone County Witness Point."



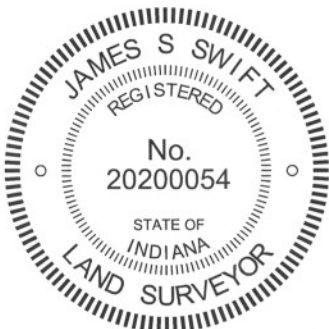
The harrison monument was set over a stone found.

A BCS record of December 23-24, 1867 refers to the corner as "a stone that was set." A BCS record of July 15, 1974 states "no stone."

This corner was excavated on April 12, 2011. Prior to excavation a 5/8 inch diameter rebar was found at 4 inches deep, next to a railroad rail found at 11 inches deep, both in a chiseled hole in the asphalt. Field observation of the roadways to the north and south of this corner indicated that the actual corner was likely several feet west of the found rail and rebar.

Excavation revealed a stone found at 20 inches deep, 3.3 feet west of the rail. The stone is 10 inches E-W by 9 inches N-S by approximately 7 inches tall. It is embedded in the clay layer below the road, with the top of the stone at the bottom of the road bed. No specific marks were found. The characteristics of the stone, oriented in cardinal directions yet horizontal with no marks, match the characteristics of other stones found for which the description was "a stone that was set." It is believed that this description refers to stones found by County Surveyors which appear to have been purposely set to mark the corner but which were not set by the County Surveyors. It is likely that this stone was set by pioneer landowners who marked the corner, perhaps upon removal of the original wood post. The position of the stone fits well with local evidence in the form of the county roads extending N,S,E,W from the corner. The stone was left in place and a harrison monument was set over the top, center of the stone. The rebar and railroad rail were removed during excavation.

This corner was originally established as a wood post in July, 1821.



Kenneth E. Hedge
Kenneth E. Hedge, County Surveyor

James S. Swift
James S. Swift, IN LS 20200054
March 1, 2012

Marion Township

Section 4 T19N, R2E	Section 3 T19N, R2E
Section 9 T19N, R2E	Section 10 T19N, R2E

PHOTOGRAPHIC DOCUMENTATION

Date of photography: April 12, 2011

View of the stone from the east.



View of the stone from above.



View of the stone from the south.



View from the south, looking north along County Road 900 East. The picture below was taken from the same N-S/E-W orientation as the picture to the left, but with the camera raised to capture the view of the road to the north.



For details and documentation, refer to related sheet "Section Corner Record."

SECTION CORNER RECORD

BOONE COUNTY SURVEYOR'S OFFICE

NE 550-900

State Plane grid coordinates NAD83 (CORS96):

North: 1775668.47 East: 3172058.71 (U.S. survey feet)

Type of monument: Harrison, 4" disk 'Section Corner'

Depth: One inch below adjacent road surface

Indiana tie card references:

IN02_T19NR2E04_44

IN02_T19NR2E03_36

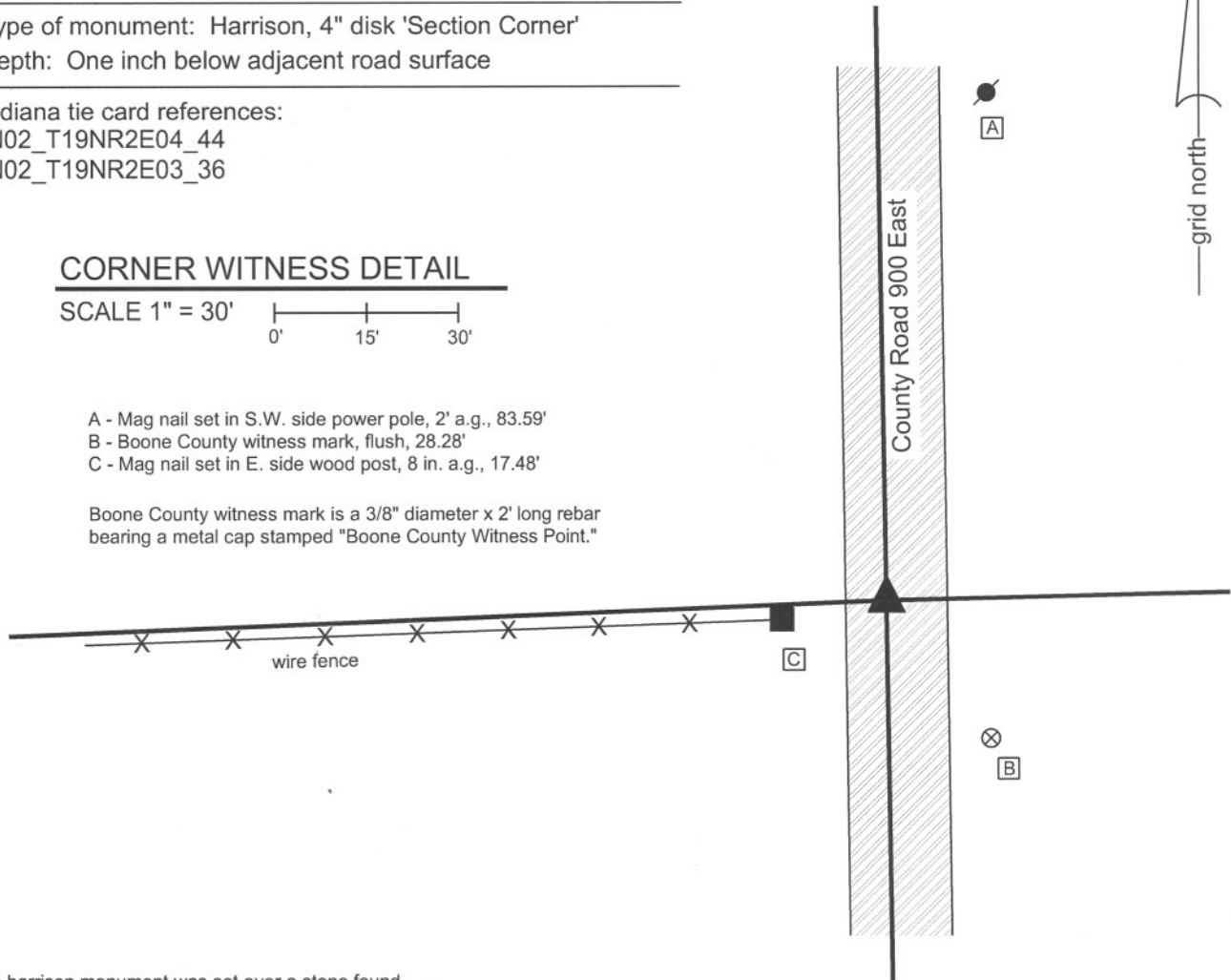
CORNER WITNESS DETAIL

SCALE 1" = 30'



- A - Mag nail set in S.W. side power pole, 2' a.g., 83.59'
- B - Boone County witness mark, flush, 28.28'
- C - Mag nail set in E. side wood post, 8 in. a.g., 17.48'

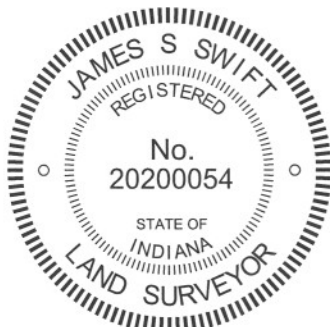
Boone County witness mark is a 3/8" diameter x 2' long rebar bearing a metal cap stamped "Boone County Witness Point."



The harrison monument was set over a stone found.

A BCS record of August 5-6, 1872 states "Reestablished from stump. Set Rock 13.8.6 1/2 +." No recent BCS tie cards were found referencing this corner. This corner was excavated on November 9, 2011. Prior to excavation a 5/8 inch diameter rebar was found at 3 inches deep in a hole in the asphalt. The rebar was bent. The rebar was in line with the old fence to the East and approximately 2.5 feet north of the fence to the west. Excavation revealed the stone described in the 1872 record at 13 inches deep. The stone, as found, appeared to have been hit from the north and leaned slightly towards the southwest. A clearly visible etched + was found on the southwest edge of the stone. If the stone were stood up, the mark would have been on the top of the stone. The stone was left as found, but if it were stood up, it would measure 6 1/2 inches E-W by 8 inches N-W. Enough of the stone was exposed along the top and N.E. edge to measure 12 inches and determine that the stone was slightly longer than this. The stone was embedded in the clay layer below the road and appears to have protruded approximately 2 inches out of the clay prior to being hit and leaned to the S.W. The stone was accepted as being the record stone from 1872. The stone was left in place, as found, and a harrison monument was set over the main body of the stone, slightly north of the position of the etched +. The top 2 inches of the stone were embedded in concrete. The rebar, removed during excavation, had been 0.8 foot north of the main body of the stone.

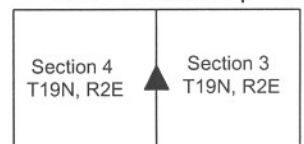
This corner was originally established as a wood post in July, 1821.



Kenneth E. Hedge
 Kenneth E. Hedge, County Surveyor

James S. Swift
 James S. Swift, IN LS 20200054
 March 1, 2012

Marion Township



PHOTOGRAPHIC DOCUMENTATION

Date of photography: November 9, 2011

The stone as first exposed. View from the west. Note the etched + on the S.W. side of the stone.



View of the stone from the east. The small, light colored rock represents the specific point over which the harrison monument was set.



View from the south, looking across the stone and north along County Road 900 East.



View from the east, looking across the stone and west into the row of trees along the section line.



For details and documentation, refer to related sheet "Section Corner Record."