

# SECTION CORNER RECORD

# SE 600-200

## BOONE COUNTY SURVEYOR'S OFFICE

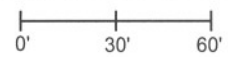
State Plane grid coordinates NAD83 (NSRS 2007):

Corner 1: North: 1714039.90 East: 3135409.57 (U.S. survey feet)

Corner 2: North: 1714043.09 East: 3135538.23 (U.S. survey feet)

### CORNER WITNESS DETAIL

SCALE 1" = 60'



Corner 1:

Type of monument: Harrison, 4" disk 'Section Corner'

Depth: One inch below adjacent road surface

Corner 2:

Type of monument: 5/8 inch rebar with metal cap stamped "Boone County Surveyor"

Depth: Flush with adjacent ground.

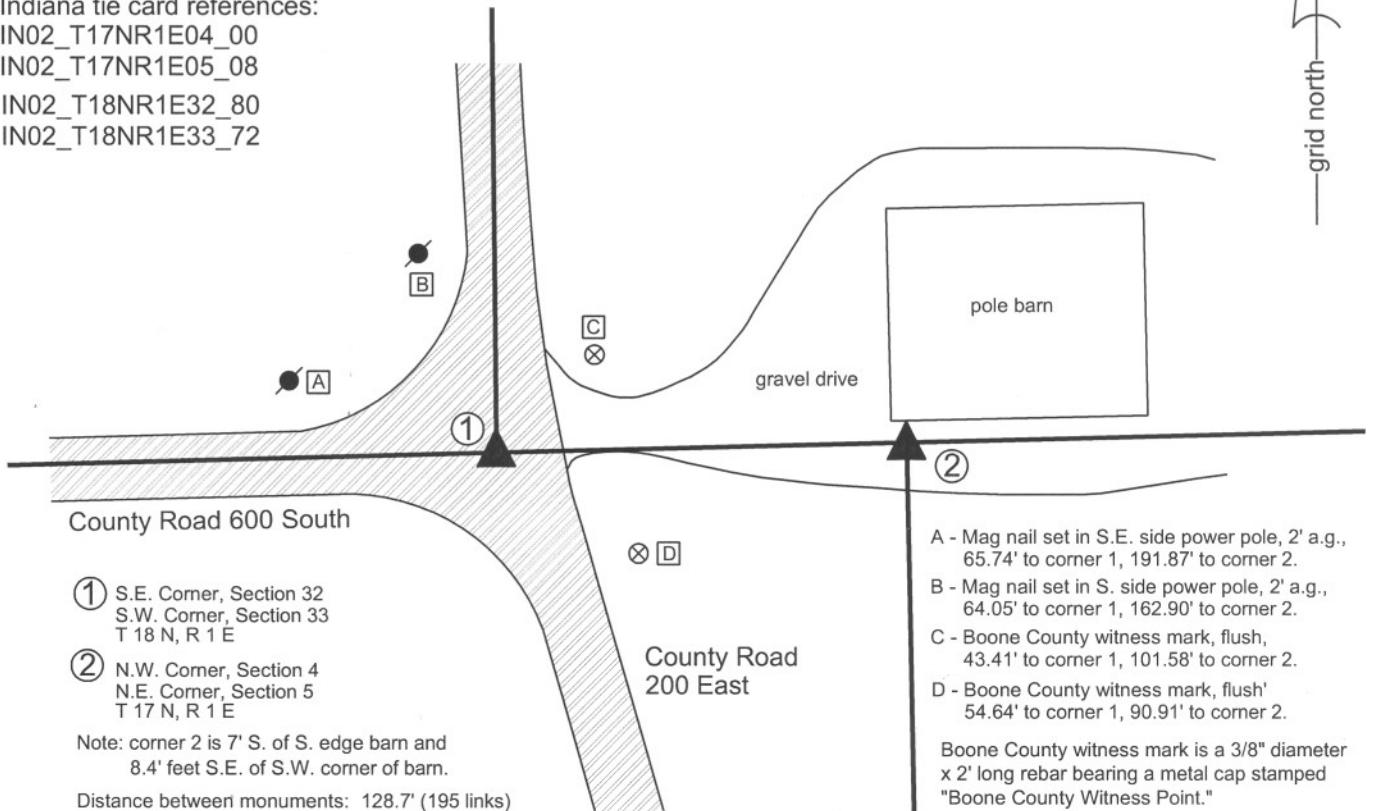
Indiana tie card references:

IN02\_T17NR1E04\_00

IN02\_T17NR1E05\_08

IN02\_T18NR1E32\_80

IN02\_T18NR1E33\_72



County Road 600 South

① S.E. Corner, Section 32  
S.W. Corner, Section 33  
T 18 N, R 1 E

② N.W. Corner, Section 4  
N.E. Corner, Section 5  
T 17 N, R 1 E

Note: corner 2 is 7' S. of S. edge barn and  
8.4' feet S.E. of S.W. corner of barn.

Distance between monuments: 128.7' (195 links)

County Road  
200 East

A - Mag nail set in S.E. side power pole, 2' a.g.,  
65.74' to corner 1, 191.87' to corner 2.

B - Mag nail set in S. side power pole, 2' a.g.,  
64.05' to corner 1, 162.90' to corner 2.

C - Boone County witness mark, flush,  
43.41' to corner 1, 101.58' to corner 2.

D - Boone County witness mark, flush'  
54.64' to corner 1, 90.91' to corner 2.

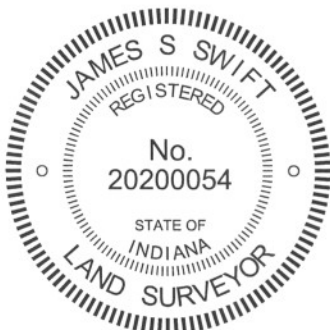
Boone County witness mark is a 3/8" diameter  
x 2' long rebar bearing a metal cap stamped  
"Boone County Witness Point."

The harrison monument at corner was set in place of a railroad rail found. The capped rebar at corner 2 was set in a calculated position.

A BCS record of August 19, 1867 for corner 1 states "Reestablished from one tree. Set a Rock 16,14,8." A BCS tied card for the same corner, dated July 10, 1968 states "Stone found." No specific references were found for corner 2 beyond the original establishment of the corner in 1820.

Excavation at corner 1 yielded a railroad rail found at 9 inches below grade. No other evidence was found. Though the tie card merely states "stone found," it is known that the standard procedure of BCS field crews from that era was to remove a stone, if found, and replace it with a 30 inch length of railroad rail set on end. It is believed that the found rail is in the same position as the stone found in 1968. The rail was accepted as the best evidence of corner 1. The rail was removed and a harrison monument was set in its place. No specific evidence was found in the immediate vicinity of corner 2. This corner falls adjacent to a large pole barn and significant excavation was not performed. Corner 2 was established on the range line at the record government closing distance of 195 links (128.7 feet) east of corner 1. This position fits well with the extended roadway to the south. A 5/8 inch diameter rebar, 3 feet long, with an aluminum cap stamped 'Boone County Surveyor' was set at corner 2.

Corner 1 was originally established as a wood post in 1819. Corner 2 was originally established as a wood post in 1821.



*Kenneth E. Hedge*  
Kenneth E. Hedge, County Surveyor

*James S. Swift*  
James S. Swift, IN LS 20200054  
July 25, 2011

Worth Township

Section 32 T18N, R1E	Section 33 T18N, R1E
Section 5 T17N, R1E	Section 4 T17N, R1E

# SECTION CORNER RECORD

# SE 600-250

## BOONE COUNTY SURVEYOR'S OFFICE

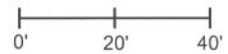
State Plane grid coordinates NAD83 (NSRS 2007):

Corner 1: North: 1714106.25 East: 3138088.74 (U.S. survey feet)

Corner 2: North: 1714108.84 East: 3138183.08 (U.S. survey feet)

### CORNER WITNESS DETAIL

SCALE 1" = 40'



Corners 1 & 2:

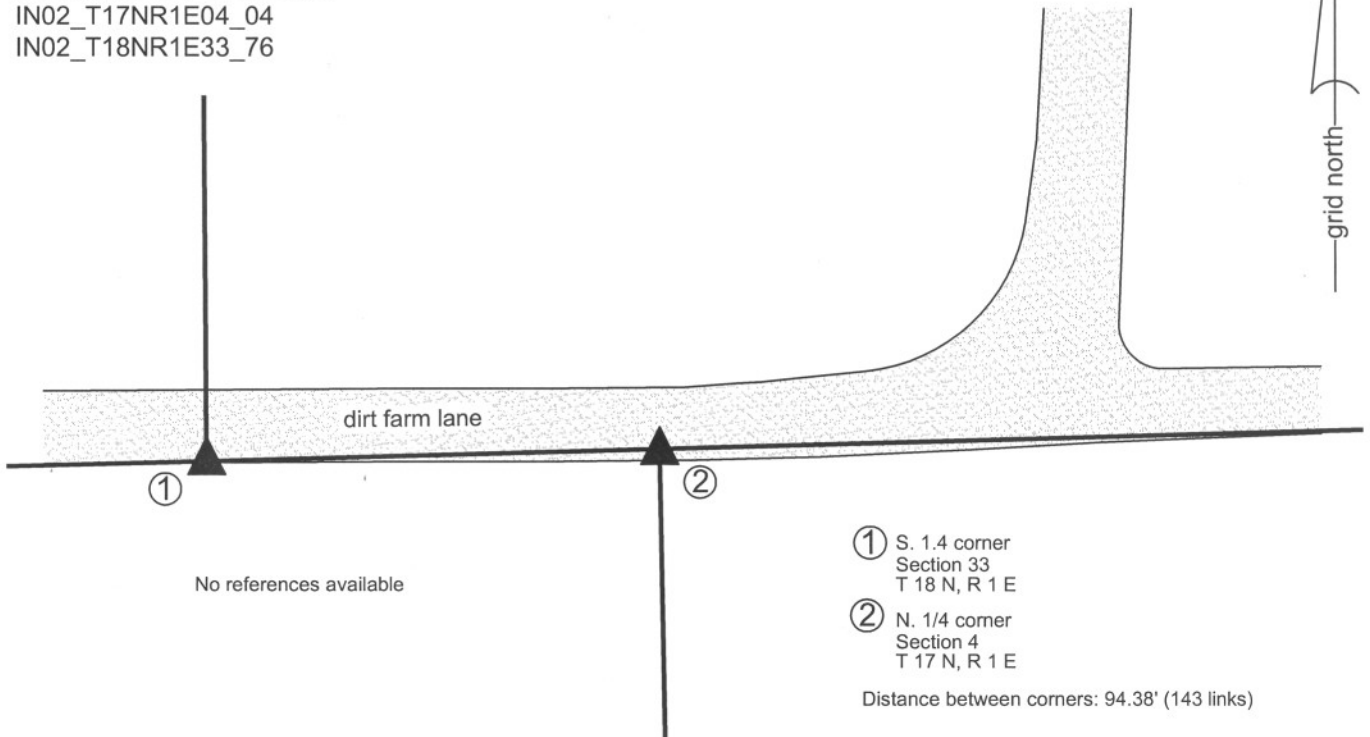
Type of monument: 5/8 inch rebar bearing a metal cap stamped Boone County Surveyor'

Depth: 12 inches below adjacent ground

Indiana tie card references:

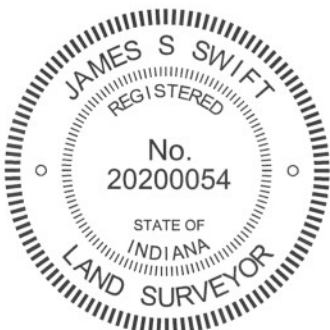
IN02\_T17NR1E04\_04

IN02\_T18NR1E33\_76



Both corners were set at calculated positions, as no direct evidence of the corners were found in the immediate vicinity.

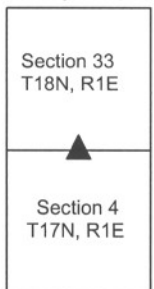
No specific records were found referencing corner 1 beyond the original establishment of the corner in 1819. A BCS record dated October 11-12, 1867 states with respect to corner 2 "Established 143 links East of 1/4 Sect. corner for section 33. Set a Rock 6,5,4 marked +. Several pieces under it." The same record also states, with respect to the northeast corner or the west half of the northeast quarter of Section 4 (henceforth referred to as '1/8 corner'), "Established 117 links East of the 1/8 Sect. corner for Sect. 33. Set a rock 20, 16, 33 mark + on top." A BCS tie card dated March 18, 1976 shows a stone found at this 1/8 corner. Using the 1976 ties, the stone at the 1/8 corner was found. It is noted that the 143 link offset at the 1/4 corner (subject corner of this tie card) represents the average of the record closing distances for the section corners to the east (91 links) and west (195 links). It is also noted that the 117 link offset stated for the 1/8 corner is the average of 143 links and 91 links. The position of corner 2 was established on the westerly extension of the line connecting northeast corner of section 4 (please refer to the tie card for that corner for more information) with the found stone at the 1/8 corner, at double the distance between the respective corners. Corner 1 was established on the further westerly prolongation of this line at 143 links (94.38 feet) from corner 2. It is noted that corner 1, as so established, falls 3.5 feet south and 2.9 feet east of the calculated midpoint of the line connecting the southeast and southwest corners of section 33. 30 inch lengths of 5/8 inch diameter rebars were set at both corner 1 and corner 2. Both rebars bear an aluminum cap stamped 'Boone County Surveyor' and both were set approximately 12 inches below grade to protect them from disruption due to adjacent farming operations. Corner 1 was originally established in 1819. Corner 2 was not established by the federal government and was set by the Boone County Surveyor in 1867.



*Kenneth E. Hedge*  
 Kenneth E. Hedge, County Surveyor

*James S. Swift*  
 James S. Swift, IN LS 20200054  
 July 25, 2011

Perry Twp



# SECTION CORNER RECORD

## BOONE COUNTY SURVEYOR'S OFFICE

SE 600-300

State Plane grid coordinates NAD83 (NSRS 2007):

Corner 1: North: 1714179.39 East: 3140761.91 (U.S. survey feet)

Corner 2: North: 1714180.84 East: 3140821.96 (U.S. survey feet)

### CORNER WITNESS DETAIL

SCALE 1" = 40'



Corner 1:

Type of monument: Harrison, 4" disk 'Section Corner'

Depth: flush with adjacent ground.

Corner 2:

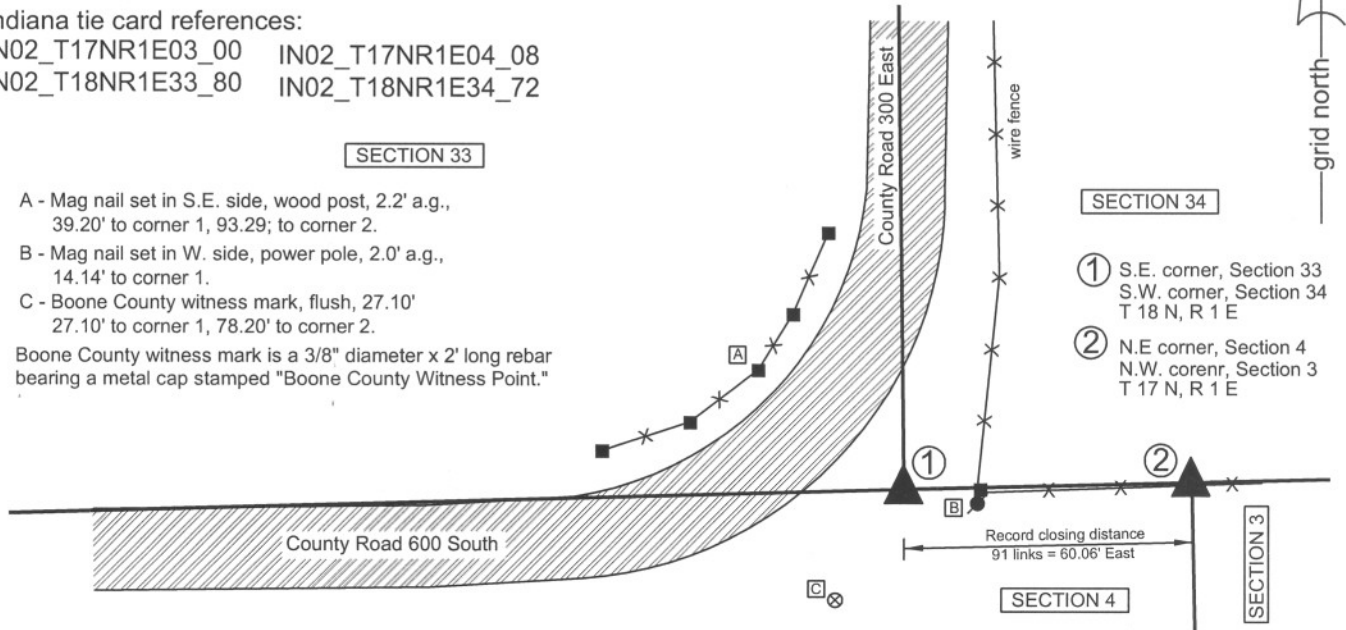
Type of monument: 5/8" rebar with metal cap stamped "Boone County Surveyor"

Depth: flush with adjacent ground.

Indiana tie card references:

IN02\_T17NR1E03\_00 IN02\_T17NR1E04\_08

IN02\_T18NR1E33\_80 IN02\_T18NR1E34\_72



A - Mag nail set in S.E. side, wood post, 2.2' a.g.,  
39.20' to corner 1, 93.29; to corner 2.

B - Mag nail set in W. side, power pole, 2.0' a.g.,  
14.14' to corner 1.

C - Boone County witness mark, flush, 27.10'  
27.10' to corner 1, 78.20' to corner 2.

Boone County witness mark is a 3/8" diameter x 2' long rebar  
bearing a metal cap stamped "Boone County Witness Point."

- SECTION 34
- ① S.E. corner, Section 33  
S.W. corner, Section 34  
T 18 N, R 1 E
  - ② N.E. corner, Section 4  
N.W. corner, Section 3  
T 17 N, R 1 E

The harrison monument at corner 1 was set in place of two stones found. The rebar at corner 2 was set in a calculated position. A BCS record of November 14, 1912 states with respect to corner 1 "Set rock corner between sec. 33 and 34. In line with rocks at f and F in sec. 34." No specific records were found for corner 2 beyond the original establishment of the corner in 1820. No BCS tie cards were found for either corner. Preliminary excavation occurred on May 22, 2008. Prior to excavation an iron pipe was found using a magnetic locator. The pipe was at the southerly prolongation of the approximate center of County Road 300 East and immediately west of a wood corner post to the east. It is noted that the wood corner post appears to be new, as does the section of fence attached to it to the east. The new section of fence blends into older fence approximately 300 feet east, at which point the fence is further north. Excavation revealed a stone approximately 1.9 feet north of the pipe. The stone is 24 inches E-W by 16 inches N-S by 8 inches thick. The letters "RT" are etched deeply into the top of the stone, with R to the west and T to the east. On May 22, the "RT" stone was left in place pending further research into the probable source of the letters. Research of the deed record uncovered two instances where the adjoining property owners had the respective names which begin with R (west, section 33) and T (east, section 34). In the early 1930s the property owners were Reed and Tague, while in the early 1940s the property owners were Ragan and Tyler. Tyler still owns land in section 34, though not the parcel immediately adjoining the corner. It is possible that the RT represents the initials of these property owners. On August 15, 2008 the RT stone was removed and another stone was found directly beneath it, being 14 inches deep, 13 inches E-W, 11 inches N-S and 8 inches thick. Local farmer Dan Tyler reports that the old fence to the east was built in the 1940s and that the position of the stones fit with the terminus of the old fence, now removed, which was slightly north of where the new fence is built. This observation fits with the fact that the old section of fence remaining further east is slightly north of the new fence. The two stones were accepted as the best evidence of the original location of corner 1 and the harrison monument was set in place of the stones, both of which were removed. No specific evidence was found for corner 2 and this corner was established on the township line at the original government closing distance of 91 links 60.06 feet. A 30 inch length of 5/8 inch diameter rebar bearing an aluminum cap stamped 'Boone County Surveyor' was set at this corner.

Corner 1 was originally established as a wood post in 1819 and corner 2 was originally established as a wood post in 1820.

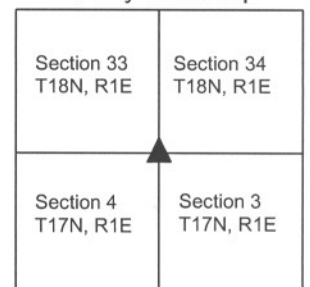


*Kenneth E. Hedge*  
Kenneth E. Hedge, County Surveyor

*James S. Swift*  
James S. Swift, IN LS 20200054

March 11, 2009, revised July 25, 2011

Perry Township



# SECTION CORNER RECORD

SE 650-200

## BOONE COUNTY SURVEYOR'S OFFICE

State Plane grid coordinates NAD83 (NSRS 2007):

North: 1711444.77 East: 3135586.76 (U.S. survey feet)

Type of monument: Harrison, 4" disk 'Section Corner'

Depth: One inch below adjacent road surface

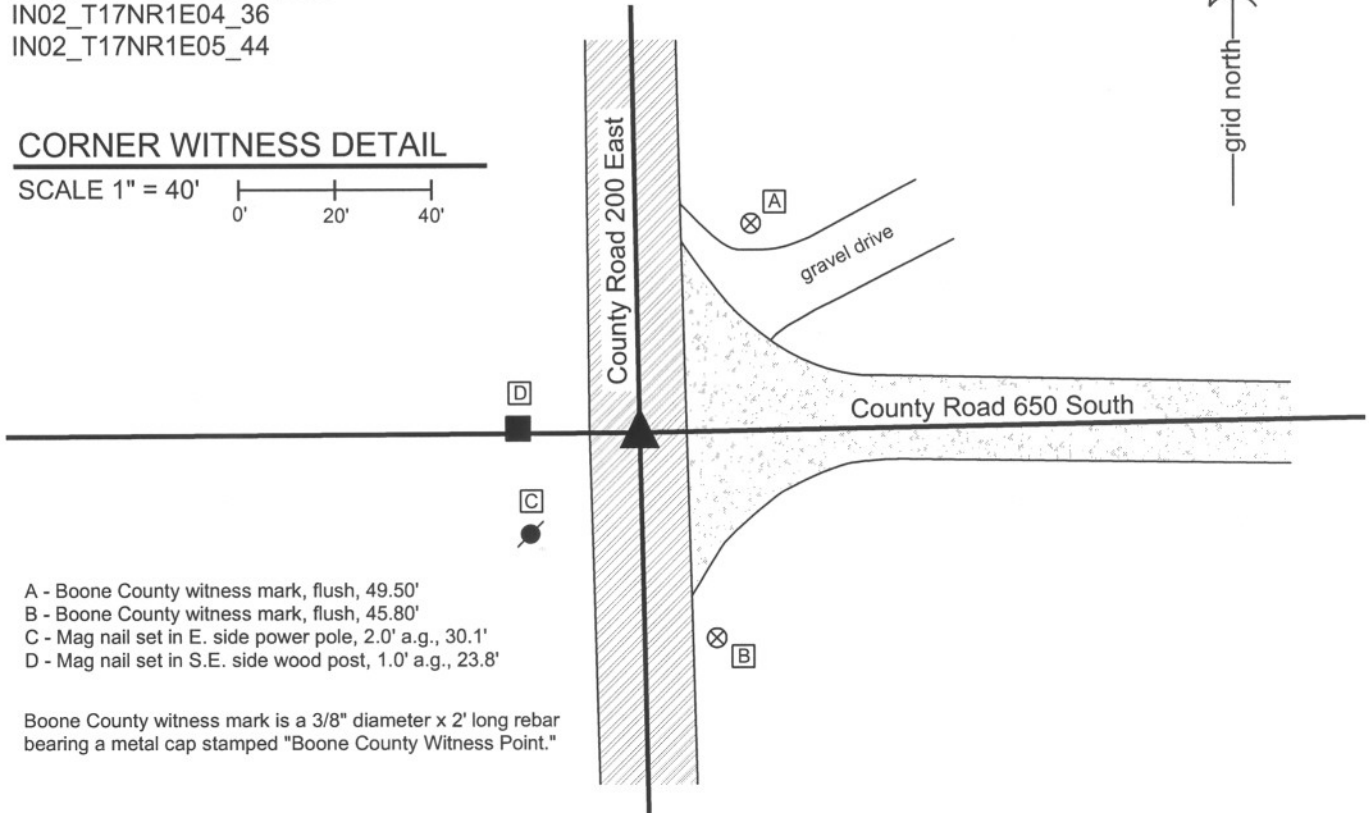
Indiana tie card references:

IN02\_T17NR1E04\_36

IN02\_T17NR1E05\_44

### CORNER WITNESS DETAIL

SCALE 1" = 40'



- A - Boone County witness mark, flush, 49.50'
- B - Boone County witness mark, flush, 45.80'
- C - Mag nail set in E. side power pole, 2.0' a.g., 30.1'
- D - Mag nail set in S.E. side wood post, 1.0' a.g., 23.8'

Boone County witness mark is a 3/8" diameter x 2' long rebar bearing a metal cap stamped "Boone County Witness Point."

The harrison monument was set over a stone found.

This corner is not specifically described in the BCS Surveyor's Record. It is mentioned as the terminal point for a measurement in 1867. A BCS tie card dated July 10, 1968 states "no stone." A BCS reference sheet dated September 30, 1989 notes the presence of a railroad rail but specifically does not confirm it as monumenting the corner. This corner was excavated on December 4, 2009. Prior to excavation a nail was found at the surface. Excavation revealed a 5/8 inch rebar with a plastic cap stamped "Witness Point" at 6 inches deep and a railroad rail on end at 10 inches deep. The rebar was on the west edge of the rail and both were slightly north and east of the nail. Further excavation revealed a stone found at 12 inches deep, 1.0 foot south of the nail and 1.1 foot south of the rail and nail. The stone measures 4 inches E-W by 8 inches N-S and is embedded in the clay layer below the base of the road, with approximately 2 inches protruding from the clay into the base of the road. The stone was temporarily removed and the height was measured to be 13 inches. The stone is flat on the west edge and pointed towards the bottom. The stone clearly shows the characteristics of having been set purposely as an intentional monument. The stone was placed back in its original position and the harrison monument was set directly over the stone. The top 6 inches of the stone were encased in concrete. The nail, rebar and rail were removed during excavation. The 1968 tie card does not mention the rail, but it is likely that this monument was set at that time. The stone is clearly the older evidence of the corner and the tie card is erroneous in the statement "no stone."

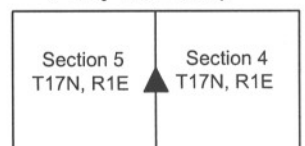
This corner was originally established as a wood post in June, 1820.



*Kenneth E. Hedge*  
Kenneth E. Hedge, County Surveyor

*James S. Swift*  
James S. Swift, IN LS 20200054  
July 14, 2010

Perry Township



PHOTOGRAPHIC DOCUMENTATION  
Date of photography: December 4, 2009

View of the stone from above and west.



The stone temporarily removed from the road bed, showing its shape with a pointed bottom.



View from the north, looking across the stone and south along County Road 200 East.



View from the west, looking across the stone and east along County Road 650 South.



For details and documentation, refer to related sheet "Section Corner Record."

# SECTION CORNER RECORD

SE 650-300

## BOONE COUNTY SURVEYOR'S OFFICE

State Plane grid coordinates NAD83 (NSRS 2007):

North: 1711579.66 East: 3140876.80 (U.S. survey feet)

Type of monument: Harrison, 4" disk 'Section Corner'

Depth: 3 inches above adjacent ground.

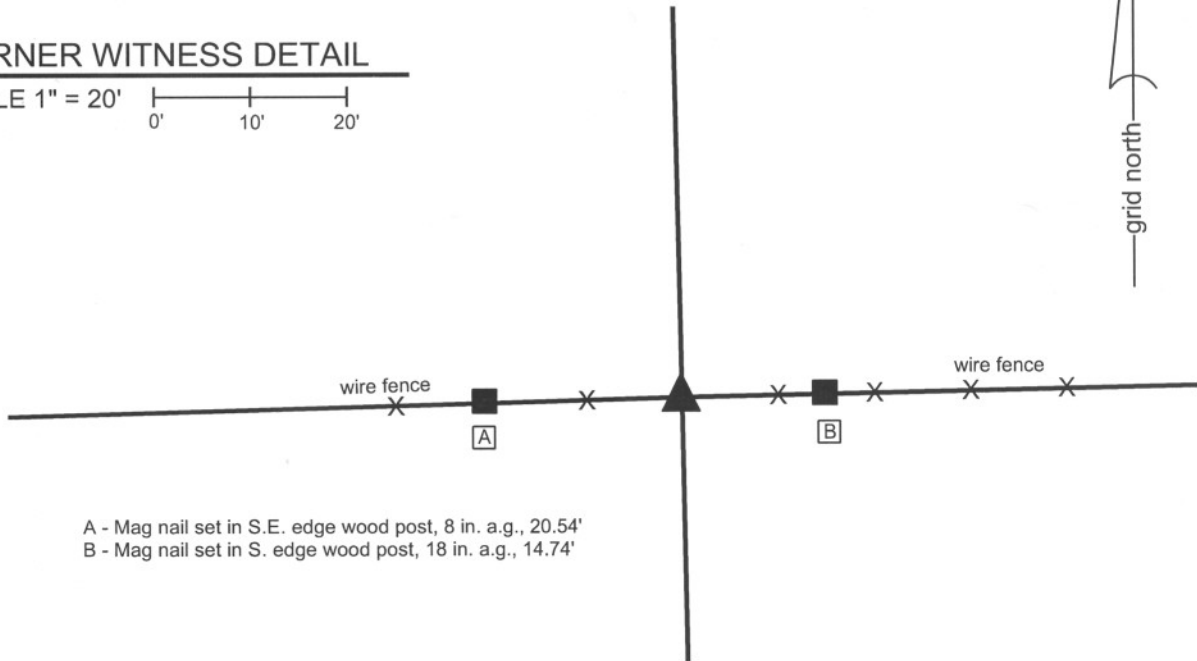
Indiana tie card references:

IN02\_T17NR1E03\_36

IN02\_T17NR1E04\_44

### CORNER WITNESS DETAIL

SCALE 1" = 20'



- A - Mag nail set in S.E. edge wood post, 8 in. a.g., 20.54'
- B - Mag nail set in S. edge wood post, 18 in. a.g., 14.74'

The harrison monument was set over the remnants of a wood corner post found.

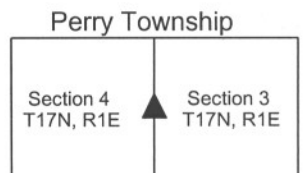
No specific descriptions of this corner were found in the BCS Surveyor's Record beyond the original establishment of the corner as a wood post in 1820. No recent BCS tie cards were found referencing this corner, nor were private recorded surveys.

This corner was excavated and monumented on October 4, 2010. Prior to excavation, no monumentation or specific evidence of the corner was visible, except the existing E-W fence. A probable location for the corner was computed with respect to other proximate corners and the evidence thereof, including the northeast, southeast and center quarter corner of section 4, the 1/16th corner 1/4 mile west of the subject corner, being at the intersection of County Roads 650 South and 275 East. Corner posts 1/8 mile and 1/4 mile, respectively, east of the subject corner were also employed. The uncertainty of the probable, calculated location of the corner was approximately 3 feet E-W. Excavation within this area yielded the discovery of the remnants of the base of an old post found at the south edge of the existing fence. Horizontal wood braces were found below the ground at the east edge of the post and fragments of old wire were found towards the north. Based on the evidence of the bracing and found fragments of wire, the post appeared to have been a corner post and its position fit well with surrounding, dependent corners. A railroad spike long accepted as marking the 1/16th corner at the intersection of C.R. 650 South and 275 East falls on line and approximately one foot east of the midpoint of a line connecting the post with a stone found and accepted as marking the center quarter corner of section 4. At a depth of 2 feet the remnants of the post are quite solid and the post was determined at this depth to have been a 7 inch by 7 inch square post. The post was held as marking the corner. The remnants of the post below 2 feet deep were left in the ground and the harrison monument was set directly over the remnants of the base of the post.



*Kenneth E. Hedge*  
Kenneth E. Hedge, County Surveyor

*James S. Swift*  
James S. Swift, IN LS 20200054  
March 30, 2012



# SECTION CORNER RECORD

SE 700-200

## BOONE COUNTY SURVEYOR'S OFFICE

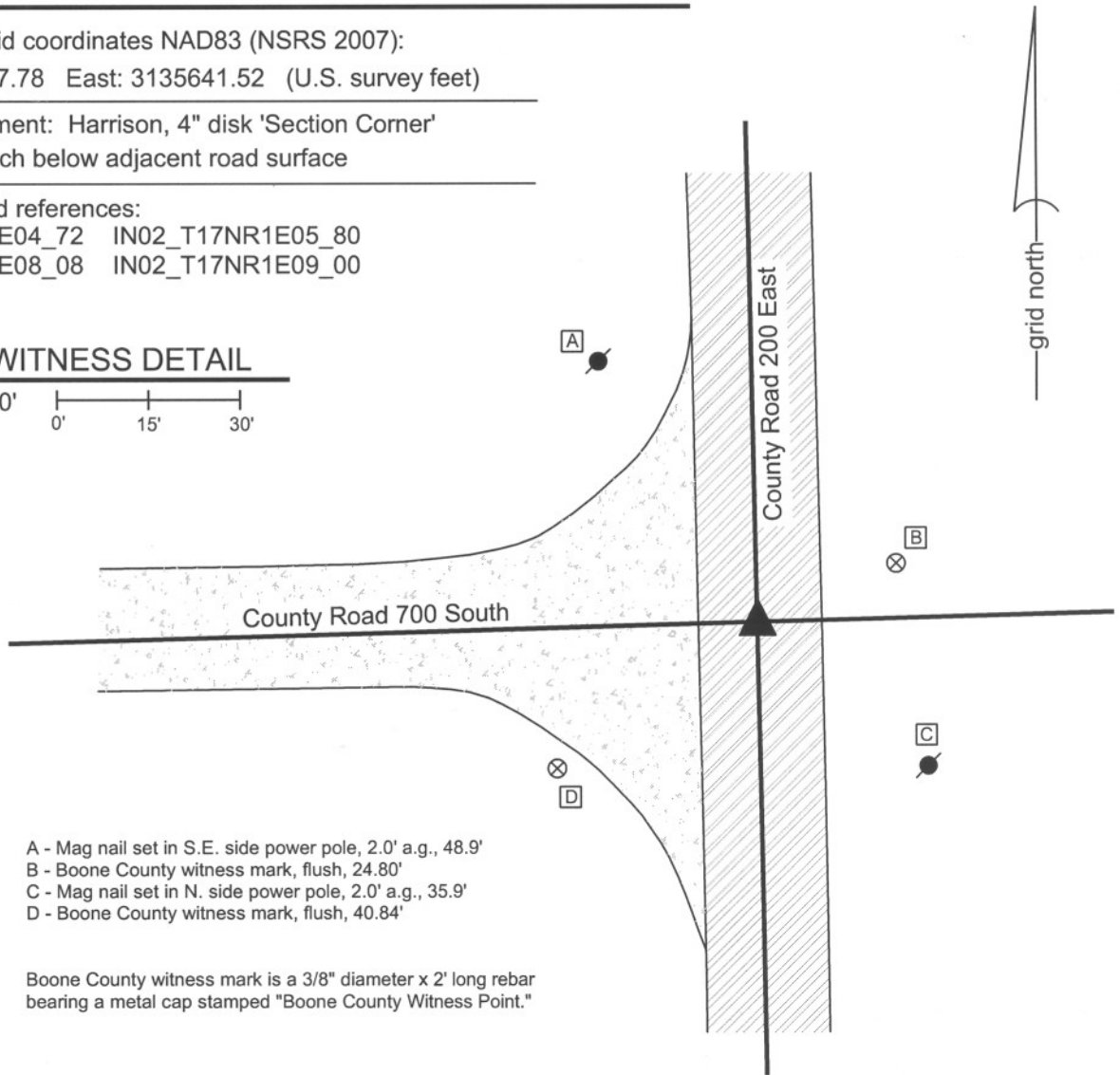
State Plane grid coordinates NAD83 (NSRS 2007):  
North: 1708787.78 East: 3135641.52 (U.S. survey feet)

Type of monument: Harrison, 4" disk 'Section Corner'  
Depth: One inch below adjacent road surface

Indiana tie card references:  
IN02\_T17NR1E04\_72 IN02\_T17NR1E05\_80  
IN02\_T17NR1E08\_08 IN02\_T17NR1E09\_00

### CORNER WITNESS DETAIL

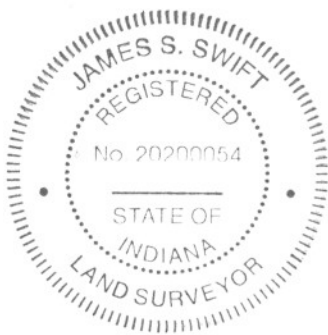
SCALE 1" = 30'  
0' 15' 30'



- A - Mag nail set in S.E. side power pole, 2.0' a.g., 48.9'
- B - Boone County witness mark, flush, 24.80'
- C - Mag nail set in N. side power pole, 2.0' a.g., 35.9'
- D - Boone County witness mark, flush, 40.84'

Boone County witness mark is a 3/8" diameter x 2' long rebar bearing a metal cap stamped "Boone County Witness Point."

The harrison monument was set in place of a railroad spike found. A BCS record of March 5 & 6, 1868 states "Reestablished from stump of one tree. Rock marked +." A BCS tie card dated July 10, 1968 states "found stone." This corner was excavated by a private survey company in April, 2007, witnessed by the undersigned Land Surveyor. At that time, a railroad rail was found on end with a rebar adjacent to it. No stones were found. Both the rebar and the rail were removed and a railroad spike was set in place of the rail. Although the 1968 tie card simply states "found stone" it is known that it was common practice of BCS field crews from that era to remove a corner stone when found and replace it with a railroad rail on end. Hence, it is accepted that the position of the rail is the same as the position of the stone and it is known that the railroad spike replaced the rail. The railroad spike was removed on May 8, 2009 and replaced with a harrison monument. This corner was originally established as a wood post in June, 1820.



*Kenneth E. Hedge*  
Kenneth E. Hedge, County Surveyor

*James S. Swift*

James S. Swift, IN LS 20200054  
July 14, 2010

Perry Township

Section 5 T17N, R1E	Section 4 T17N, R1E
Section 8 T17N, R1E	Section 9 T17N, R1E

# SECTION CORNER RECORD

## BOONE COUNTY SURVEYOR'S OFFICE

SE 700-250

State Plane grid coordinates NAD83 (NSRS 2007):  
 North: 1708858.39 East: 3138284.30 (U.S. survey feet)

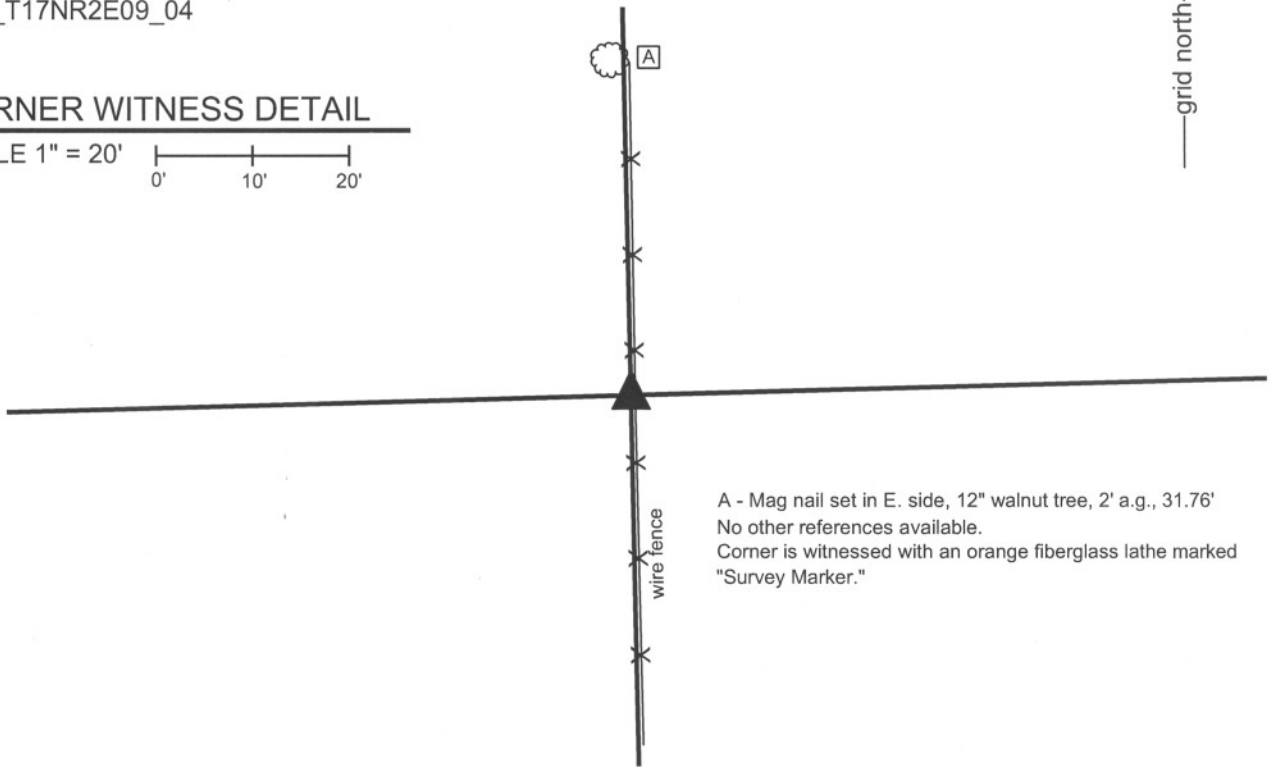
Type of monument: Harrison, 4" disk 'Section Corner'  
 Depth: Three inches above the adjacent ground.

Indiana tie card references:  
 IN02\_T17NR2E04\_76  
 IN02\_T17NR2E09\_04



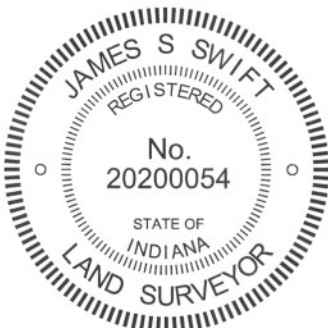
### CORNER WITNESS DETAIL

SCALE 1" = 20'



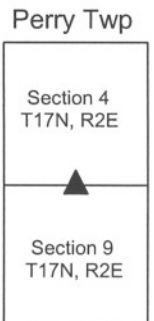
A - Mag nail set in E. side, 12" walnut tree, 2' a.g., 31.76'  
 No other references available.  
 Corner is witnessed with an orange fiberglass lathe marked "Survey Marker."

The harrison monument was set over a stone found and in place of another stone found.  
 A BCS record of March 19, 1872 states "Reestablished from Elm. Set two Rocks. One 7,5,4 +. Top one 12,9,7 +." No modern BCS tie cards were found referencing this corner.  
 This corner was excavated on September 30, 2010. Prior to excavation, a round steel fence post was found at the east edge of a north-south fence and a 5/8 inch diameter rebar was 1.7 feet west of the post. Excavation revealed both record stones found north of the rebar and post, on the west edge of the fence.  
 The top stone was found at 8 inches below grade. The stone measured 7 inches N-S by 9 inches E-W by 12 inches tall. An etched + was clearly visible on the top center of the stone. The stone was removed and the record lower stone was found directly below the top stone. The lower stone measured approximately 8 inches E-W by 6 inches N-W by 4 inches tall, with a clearly visible + etched on the top. The lower stone is situated at 22 inches below grade. The lower stone was left in place, encased in concrete and the harrison monument was set directly over the etched + on the lower stone. Remnants of an old wood post were found approximately 1 foot S.E. of the stone, directly west of the steel post. The rebar, removed during excavation, had been 0.8 foot south and 0.4 foot west of the stone. The steel post was left in place.  
 This corner was originally established as a wood post in 1820.



*Kenneth E. Hedge*  
 Kenneth E. Hedge, County Surveyor

*James S. Swift*  
 James S. Swift, IN LS 20200054  
 July 25, 2011





PHOTOGRAPHIC DOCUMENTATION

Date of photography: September 30 - October 1, 2010

View of the top stone as first exposed.



View of the top stone more fully exposed.



The top stone removed from the ground.



The top of the bottom stone.



The harrison monument set in place of the top stone and over the bottom stone.



The harrison monument set in place of the top stone and over the bottom stone.



For details and documentation, refer to related sheet "Section Corner Record."

# SECTION CORNER RECORD

SE 700-300

## BOONE COUNTY SURVEYOR'S OFFICE

State Plane grid coordinates NAD83 (NSRS 2007):

North: 1708925.87 East: 3140924.57 (U.S. survey feet)

Type of monument: Harrison, 4" disk 'Section Corner'

Depth: One inch below adjacent road surface

Indiana tie card references:

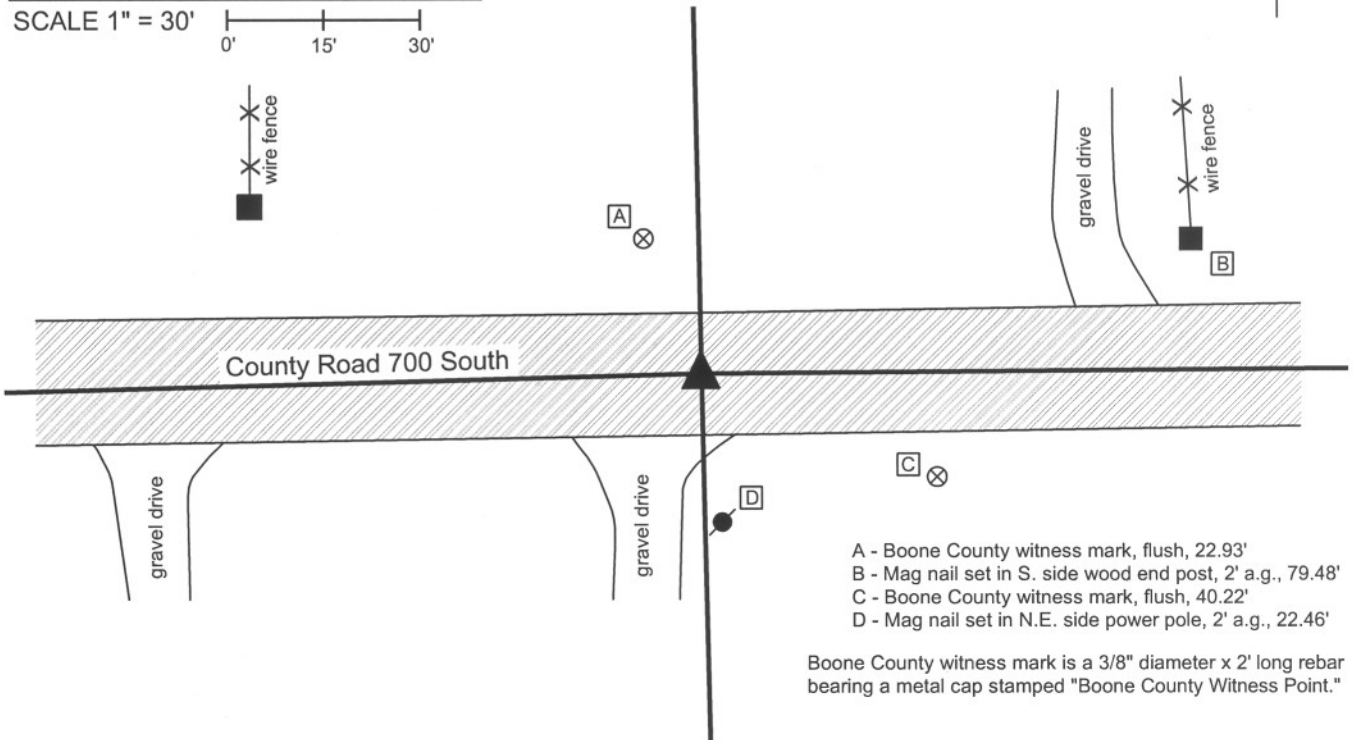
IN02\_T17NR1E03\_72 IN02\_T17NR1E04\_80

IN02\_T17NR1E09\_08 IN02\_T17NR1E10\_00



### CORNER WITNESS DETAIL

SCALE 1" = 30'  
0' 15' 30'



- A - Boone County witness mark, flush, 22.93'
- B - Mag nail set in S. side wood end post, 2' a.g., 79.48'
- C - Boone County witness mark, flush, 40.22'
- D - Mag nail set in N.E. side power pole, 2' a.g., 22.46'

Boone County witness mark is a 3/8" diameter x 2' long rebar bearing a metal cap stamped "Boone County Witness Point."

The harrison monument was set over the top of a stone found.

A BCS record of March 19, 1872 states "Found from roots of Beech. Drove no stake." A BCS record of March 29, 1898 states "Set rock. 7x13x24 +. Two small rocks beneath." No BCS tie cards were found for this corner. Excavation occurred on November 19, 2008. Prior to excavation, a 1/2 inch rebar was visible at the surface. An area approximately 3 feet N-S by 9 feet E-W appeared to have been excavated previously. The rebar was at the west edge of that area. Excavation revealed a wood hub at 5 inches deep approximately 1.5 feet west of the rebar. Excavation also revealed the record stone found at 21 inches deep. The stone is fully embedded in the clay layer beneath the road and measures 7 inches N-S by 13 inches E-W by 24 inches vertical. One small rock was exposed underneath the rock at the east edge of the record stone. The harrison monument was set directly over the top, high point of the record stone, which point is approximately 4 inches west of the east edge of the stone. The harrison monument is 1.3 feet South and 2.2 feet west of the position of the 1/2 inch rebar, which was removed during excavation.

This corner was originally established as a wood post in June, 1820.



*Kenneth E. Hedge*  
Kenneth E. Hedge, County Surveyor

*James S. Swift*

James S. Swift, IN LS 20200054

March 11, 2009 revised July 14, 2010

Perry Township

Section 4 T17N, R1E	Section 3 T17N, R1E
Section 9 T17N, R1E	Section 10 T17N, R1E

PHOTOGRAPHIC DOCUMENTATION

Date of photography: November 19, 2008

Corner stone.  
View from east with stone partially exposed.



Corner stone. View from east of fully exposed stone and County Road 700 South to the west.



Corner stone. View from above.



For details and documentation, refer to related sheet "Section Corner Record."