

SECTION CORNER RECORD

BOONE COUNTY SURVEYOR'S OFFICE

NE 500-900

State Plane grid coordinates NAD83 (CORS96):

North: 1773024.11 East: 3172095.34 (U.S. survey feet)

Type of monument: Harrison, 4" disk 'Section Corner'

Depth: One inch below adjacent road surface

Indiana tie card references:

IN02_T19NR2E04_80 IN02_T19NR2E03_72

IN02_T19NR2E09_08 IN02_T19NR2E10_00

CORNER WITNESS DETAIL

SCALE 1" = 40'



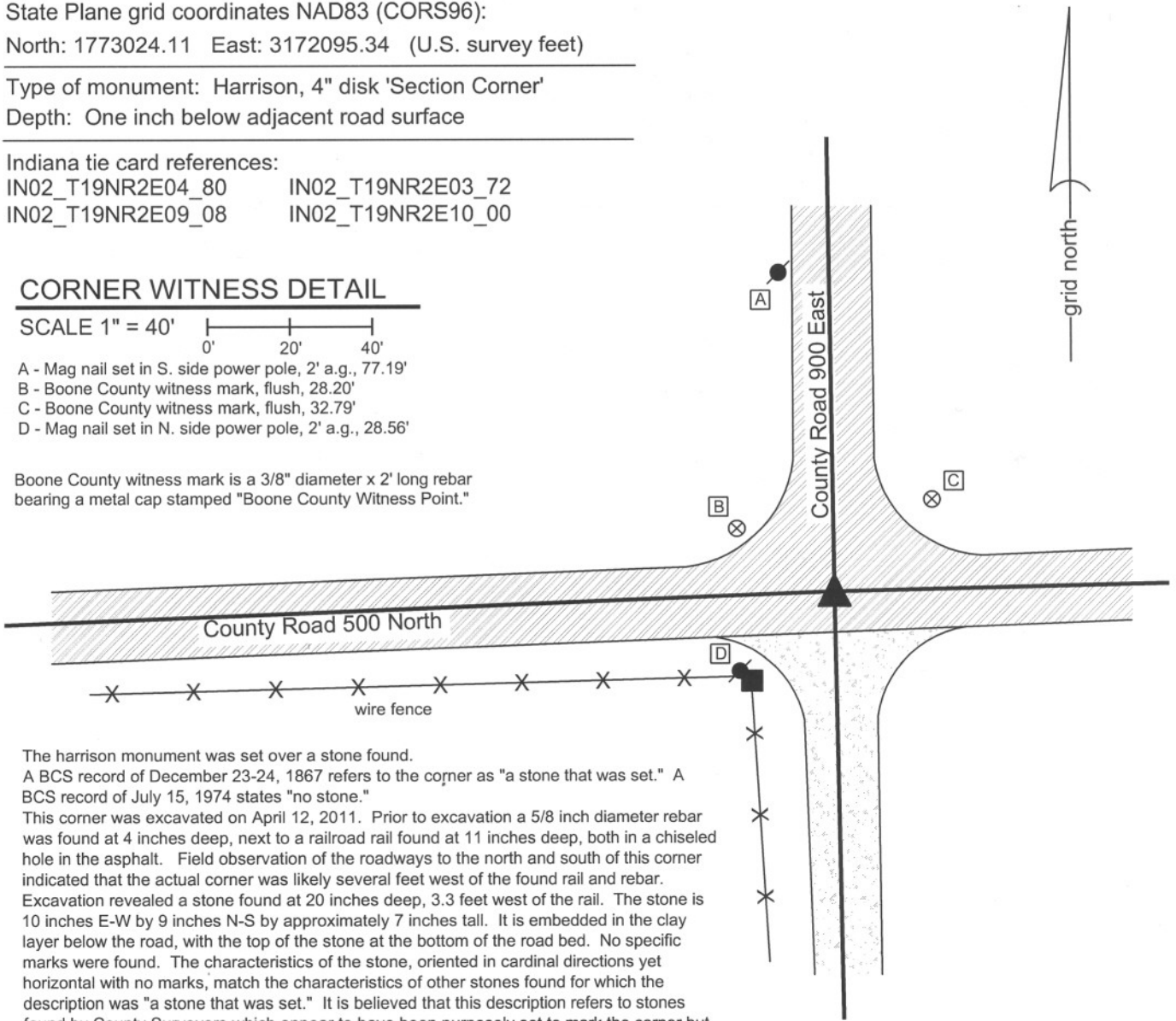
A - Mag nail set in S. side power pole, 2' a.g., 77.19'

B - Boone County witness mark, flush, 28.20'

C - Boone County witness mark, flush, 32.79'

D - Mag nail set in N. side power pole, 2' a.g., 28.56'

Boone County witness mark is a 3/8" diameter x 2' long rebar bearing a metal cap stamped "Boone County Witness Point."



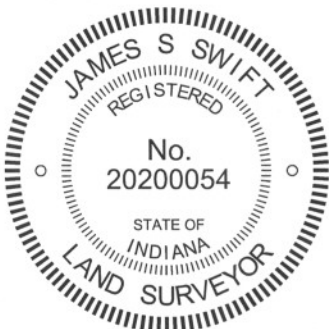
The harrison monument was set over a stone found.

A BCS record of December 23-24, 1867 refers to the corner as "a stone that was set." A BCS record of July 15, 1974 states "no stone."

This corner was excavated on April 12, 2011. Prior to excavation a 5/8 inch diameter rebar was found at 4 inches deep, next to a railroad rail found at 11 inches deep, both in a chiseled hole in the asphalt. Field observation of the roadways to the north and south of this corner indicated that the actual corner was likely several feet west of the found rail and rebar.

Excavation revealed a stone found at 20 inches deep, 3.3 feet west of the rail. The stone is 10 inches E-W by 9 inches N-S by approximately 7 inches tall. It is embedded in the clay layer below the road, with the top of the stone at the bottom of the road bed. No specific marks were found. The characteristics of the stone, oriented in cardinal directions yet horizontal with no marks, match the characteristics of other stones found for which the description was "a stone that was set." It is believed that this description refers to stones found by County Surveyors which appear to have been purposely set to mark the corner but which were not set by the County Surveyors. It is likely that this stone was set by pioneer landowners who marked the corner, perhaps upon removal of the original wood post. The position of the stone fits well with local evidence in the form of the county roads extending N,S,E,W from the corner. The stone was left in place and a harrison monument was set over the top, center of the stone. The rebar and railroad rail were removed during excavation.

This corner was originally established as a wood post in July, 1821.



Kenneth E. Hedge
Kenneth E. Hedge, County Surveyor

James S. Swift
James S. Swift, IN LS 20200054
March 1, 2012

Marion Township

Section 4 T19N, R2E	Section 3 T19N, R2E
Section 9 T19N, R2E	Section 10 T19N, R2E

PHOTOGRAPHIC DOCUMENTATION

Date of photography: April 12, 2011

View of the stone from the east.



View of the stone from above.



View of the stone from the south.



View from the south, looking north along County Road 900 East. The picture below was taken from the same N-S/E-W orientation as the picture to the left, but with the camera raised to capture the view of the road to the north.



For details and documentation, refer to related sheet "Section Corner Record."

SECTION CORNER RECORD

BOONE COUNTY SURVEYOR'S OFFICE

NE 500-950

State Plane grid coordinates NAD83 (CORS96):

North: 1773083.46 East: 3174755.04 (U.S. survey feet)

Type of monument: Harrison, 4" disk 'Section Corner'

Depth: One inch below adjacent road surface

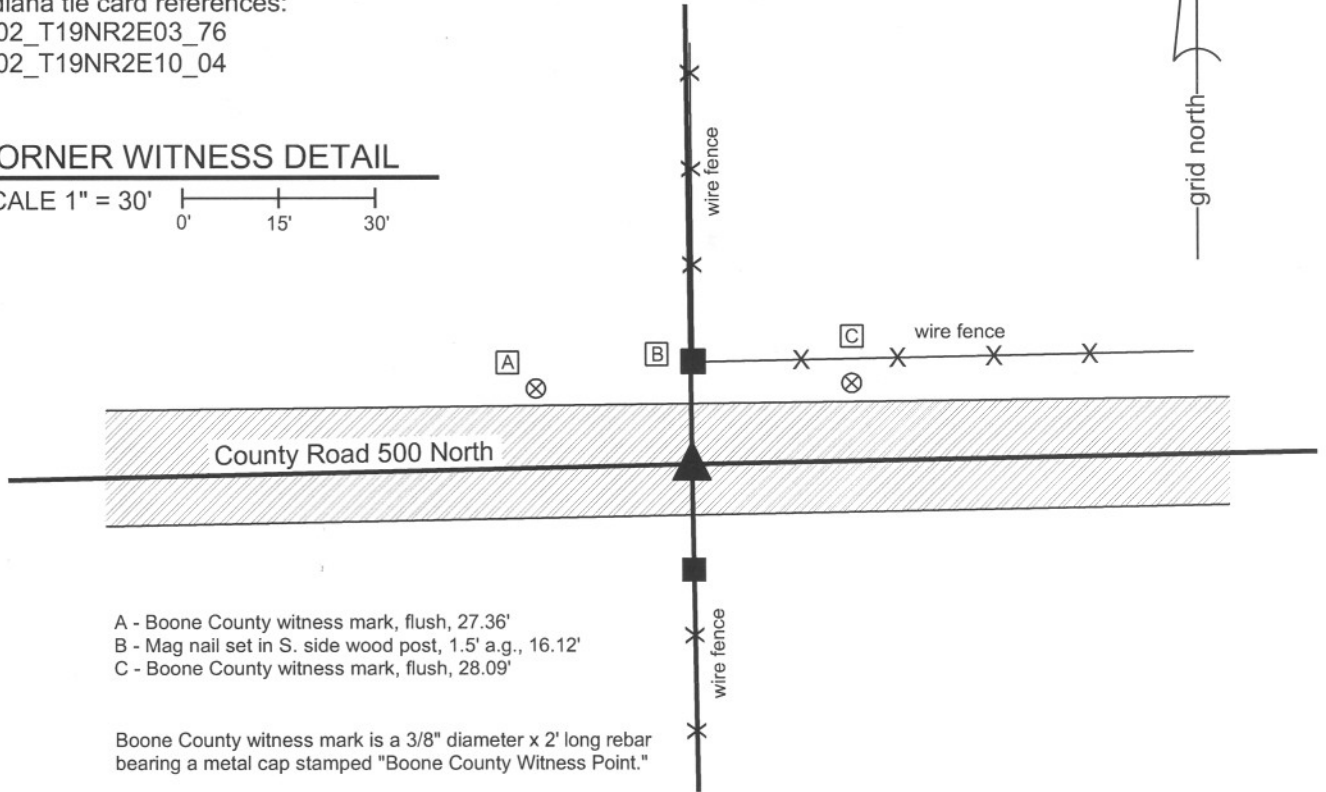
Indiana tie card references:

IN02_T19NR2E03_76

IN02_T19NR2E10_04

CORNER WITNESS DETAIL

SCALE 1" = 30'



- A - Boone County witness mark, flush, 27.36'
- B - Mag nail set in S. side wood post, 1.5' a.g., 16.12'
- C - Boone County witness mark, flush, 28.09'

Boone County witness mark is a 3/8" diameter x 2' long rebar bearing a metal cap stamped "Boone County Witness Point."

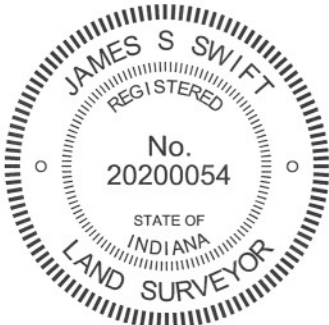
The harrison monument was set at a position midway between two old wood end posts.

Beyond the original establishment of this corner is 1821, the corner is only mentioned in the BCS Surveyor's Record as a terminal point for measurements in 1863. No descriptions of a monument are given. A BCS tie card dated July 24, 1967 shows the corner as a "stone found" but the sketch on this tie card and associated field notes does not match the physical situation at the corner.

This corner was excavated on September 27, 2011. Prior to excavation, no metal monuments were found. Local evidence of the corner was found in the form of the east-west county road and old wood end posts on the north and south sides of the road. The position of the midpoint between the posts fits well with the east-west road and is within 2 feet of being equidistant from the section corners to the east and west. Excavation of the roadway, extending 5 feet north, 2.5 feet east, 2 feet south and 2.5 feet west of the midpoint between the end posts revealed no further evidence of the corner. It was observed that the roadbed consisted of approximately 1 foot of modern fill material between the asphalt surface and clay layer below the road bed. None of the older sandy gravel fill material which is typically found to compose the base of a road bed, being the material originally placed on the old dirt wagon roads in the late 1800s and early 1900s, was found. Only modern material was found. It is possible that a stone which had been present was removed at the time of the grading which would likely have taken place in association with the installation of the modern road bed material.

The corner was established at the midpoint between the old posts found on the north and south sides of the road. A harrison monument was set at this position.

This corner was originally established as a wood post in July, 1821.



Kenneth E. Hedge
Kenneth E. Hedge, County Surveyor

James S. Swift
James S. Swift, IN LS 20200054
March 1, 2012

Marion Twp

Section 3
T19N, R2E

Section 10
T19N, R2E

SECTION CORNER RECORD

NE 500-1000

BOONE COUNTY SURVEYOR'S OFFICE

State Plane grid coordinates NAD83 (CORS96):

North: 1773132.78 East: 3177418.10 (U.S. survey feet)

Type of monument: Harrison, 4" disk 'Section Corner'

Depth: One inch below adjacent road surface

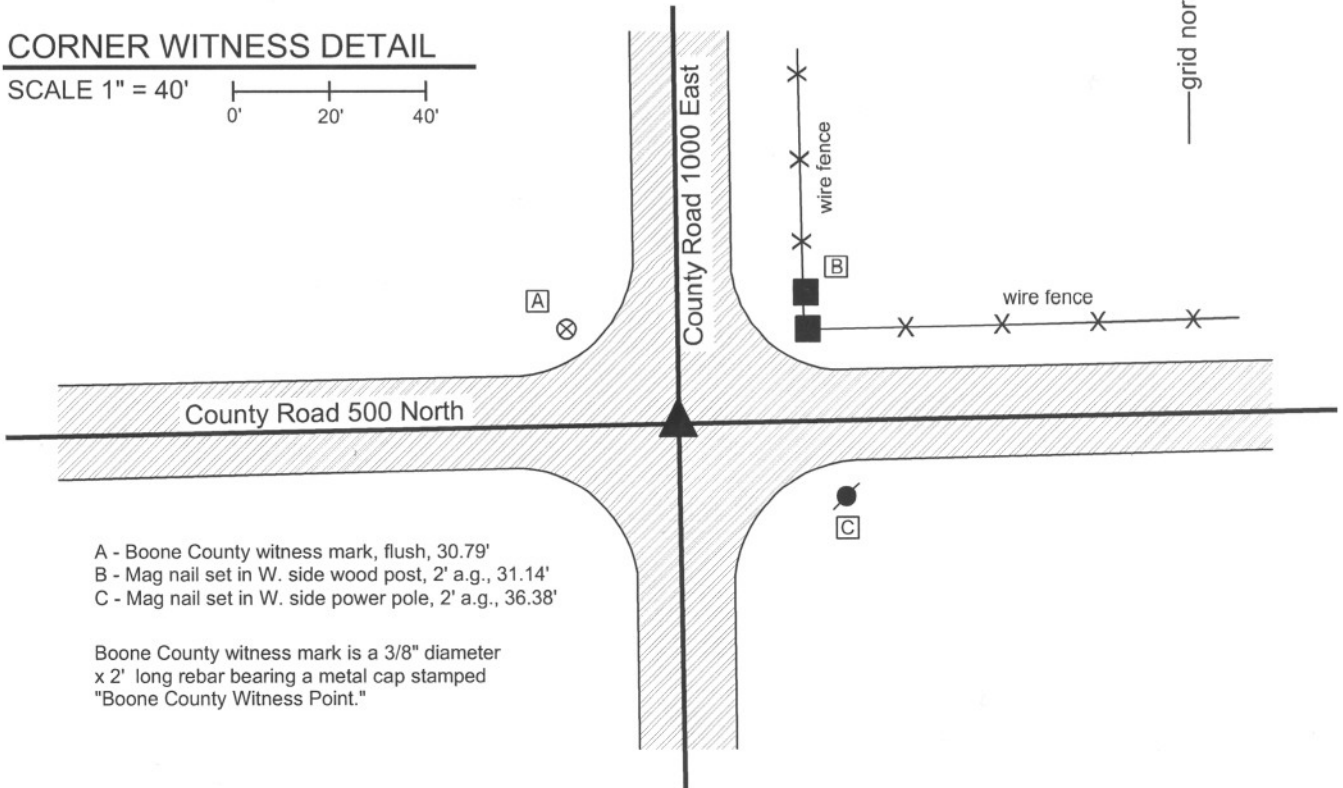
Indiana tie card references:

IN02_T19NR2E03_80 IN02_T19NR2E02_72
 IN02_T19NR2E10_08 IN02_T19NR2E11_00



CORNER WITNESS DETAIL

SCALE 1" = 40'



- A - Boone County witness mark, flush, 30.79'
- B - Mag nail set in W. side wood post, 2' a.g., 31.14'
- C - Mag nail set in W. side power pole, 2' a.g., 36.38'

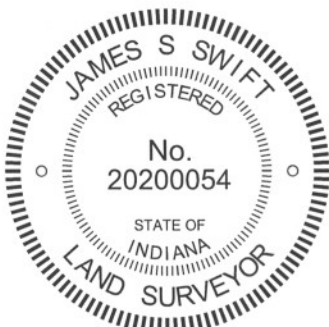
Boone County witness mark is a 3/8" diameter x 2' long rebar bearing a metal cap stamped "Boone County Witness Point."

The Harrison monument was set over a stone found.

A BCS record of April 7, 1882 states "Cor. stone marked +." Field notes dated June 1970, for which no tie card was found, state "Set rail." A BCS tie card dated June 19, 1974 states "Found Rail."

This corner was excavated on April 12, 2011. Prior to excavation, a PK nail was found 4 inches deep in a hole in the asphalt. Excavation revealed a vertical section of railroad rail found at 7 inches deep, directly below the PK nail. Further excavation revealed a stone found at 20 inches deep. With 11 inches of the top exposed, the stone measures 10 inches N-S by 6 inches E-W. The full height of the stone was not measured but it is clearly larger, remaining entirely stable in the clay with 10 inches exposed. The stone is embedded in the clay layer below the road protruding 2 inches out of the clay into the bottom of the road bed. The west side of the stone is flat and vertical. No specific marking were identified. The stone has a distinct top, high point which was held as the specific position of the corner. The Harrison monument was set over the top high, point. The PK nail and railroad rail, both removed during excavation, had been 2.1 feet west and 1.6 feet north of the corner.

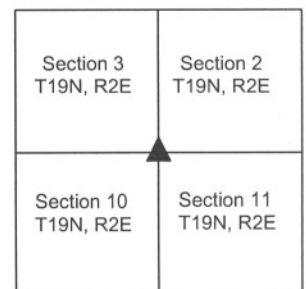
This corner was originally established as a wood post in July, 1821.



Kenneth E. Hedge
 Kenneth E. Hedge, County Surveyor

James S. Swift
 James S. Swift, IN LS 20200054
 March 1, 2012

Marion Township



PHOTOGRAPHIC DOCUMENTATION

Date of photography: April 12, 2011

View of the stone as first exposed.



View of the stone from the north.



View from the north, looking across the stone and south along County Road 1000 East.



View of the stone from above and east.



For details and documentation, refer to related sheet "Section Corner Record."

SECTION CORNER RECORD

BOONE COUNTY SURVEYOR'S OFFICE

NE 550-900

State Plane grid coordinates NAD83 (CORS96):

North: 1775668.47 East: 3172058.71 (U.S. survey feet)

Type of monument: Harrison, 4" disk 'Section Corner'

Depth: One inch below adjacent road surface

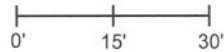
Indiana tie card references:

IN02_T19NR2E04_44

IN02_T19NR2E03_36

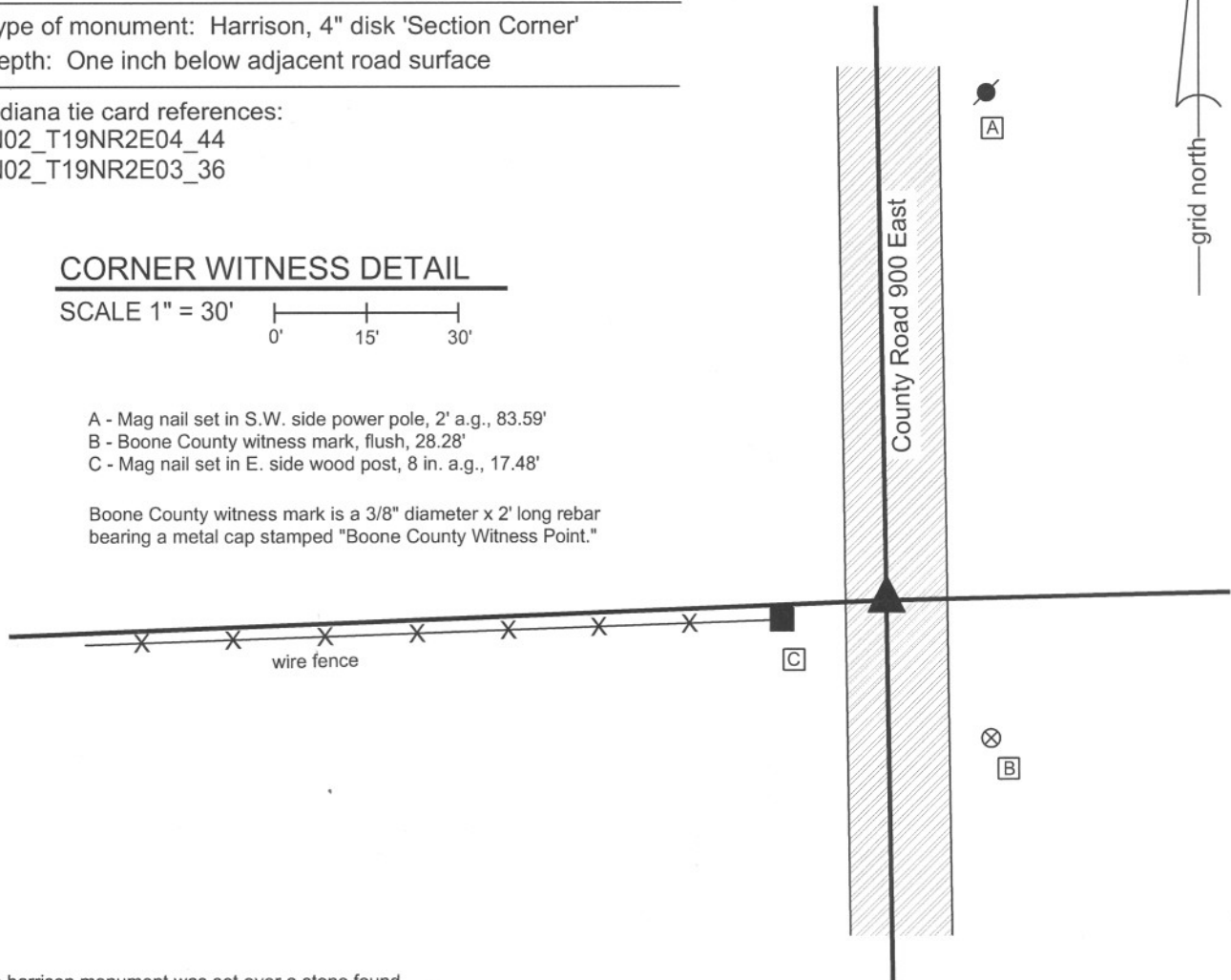
CORNER WITNESS DETAIL

SCALE 1" = 30'



- A - Mag nail set in S.W. side power pole, 2' a.g., 83.59'
- B - Boone County witness mark, flush, 28.28'
- C - Mag nail set in E. side wood post, 8 in. a.g., 17.48'

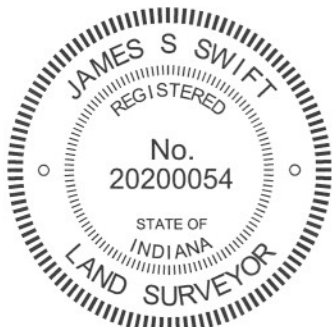
Boone County witness mark is a 3/8" diameter x 2' long rebar bearing a metal cap stamped "Boone County Witness Point."



The harrison monument was set over a stone found.

A BCS record of August 5-6, 1872 states "Reestablished from stump. Set Rock 13.8.6 1/2 +." No recent BCS tie cards were found referencing this corner. This corner was excavated on November 9, 2011. Prior to excavation a 5/8 inch diameter rebar was found at 3 inches deep in a hole in the asphalt. The rebar was bent. The rebar was in line with the old fence to the East and approximately 2.5 feet north of the fence to the west. Excavation revealed the stone described in the 1872 record at 13 inches deep. The stone, as found, appeared to have been hit from the north and leaned slightly towards the southwest. A clearly visible etched + was found on the southwest edge of the stone. If the stone were stood up, the mark would have been on the top of the stone. The stone was left as found, but if it were stood up, it would measure 6 1/2 inches E-W by 8 inches N-W. Enough of the stone was exposed along the top and N.E. edge to measure 12 inches and determine that the stone was slightly longer than this. The stone was embedded in the clay layer below the road and appears to have protruded approximately 2 inches out of the clay prior to being hit and leaned to the S.W. The stone was accepted as being the record stone from 1872. The stone was left in place, as found, and a harrison monument was set over the main body of the stone, slightly north of the position of the etched +. The top 2 inches of the stone were embedded in concrete. The rebar, removed during excavation, had been 0.8 foot north of the main body of the stone.

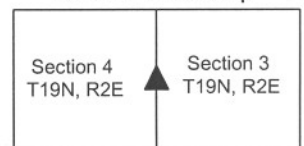
This corner was originally established as a wood post in July, 1821.



Kenneth E. Hedge
 Kenneth E. Hedge, County Surveyor

James S. Swift
 James S. Swift, IN LS 20200054
 March 1, 2012

Marion Township



PHOTOGRAPHIC DOCUMENTATION

Date of photography: November 9, 2011

The stone as first exposed. View from the west. Note the etched + on the S.W. side of the stone.



View of the stone from the east. The small, light colored rock represents the specific point over which the harrison monument was set.



View from the south, looking across the stone and north along County Road 900 East.



View from the east, looking across the stone and west into the row of trees along the section line.



For details and documentation, refer to related sheet "Section Corner Record."

SECTION CORNER RECORD

NE 550-1000

BOONE COUNTY SURVEYOR'S OFFICE

State Plane grid coordinates NAD83 (CORS96):

North: 1775787.55 East: 3177385.24 (U.S. survey feet)

Type of monument: Harrison, 4" disk 'Section Corner'


Depth: One inch below adjacent road surface

Indiana tie card references:

IN02_T19NR2E03_44

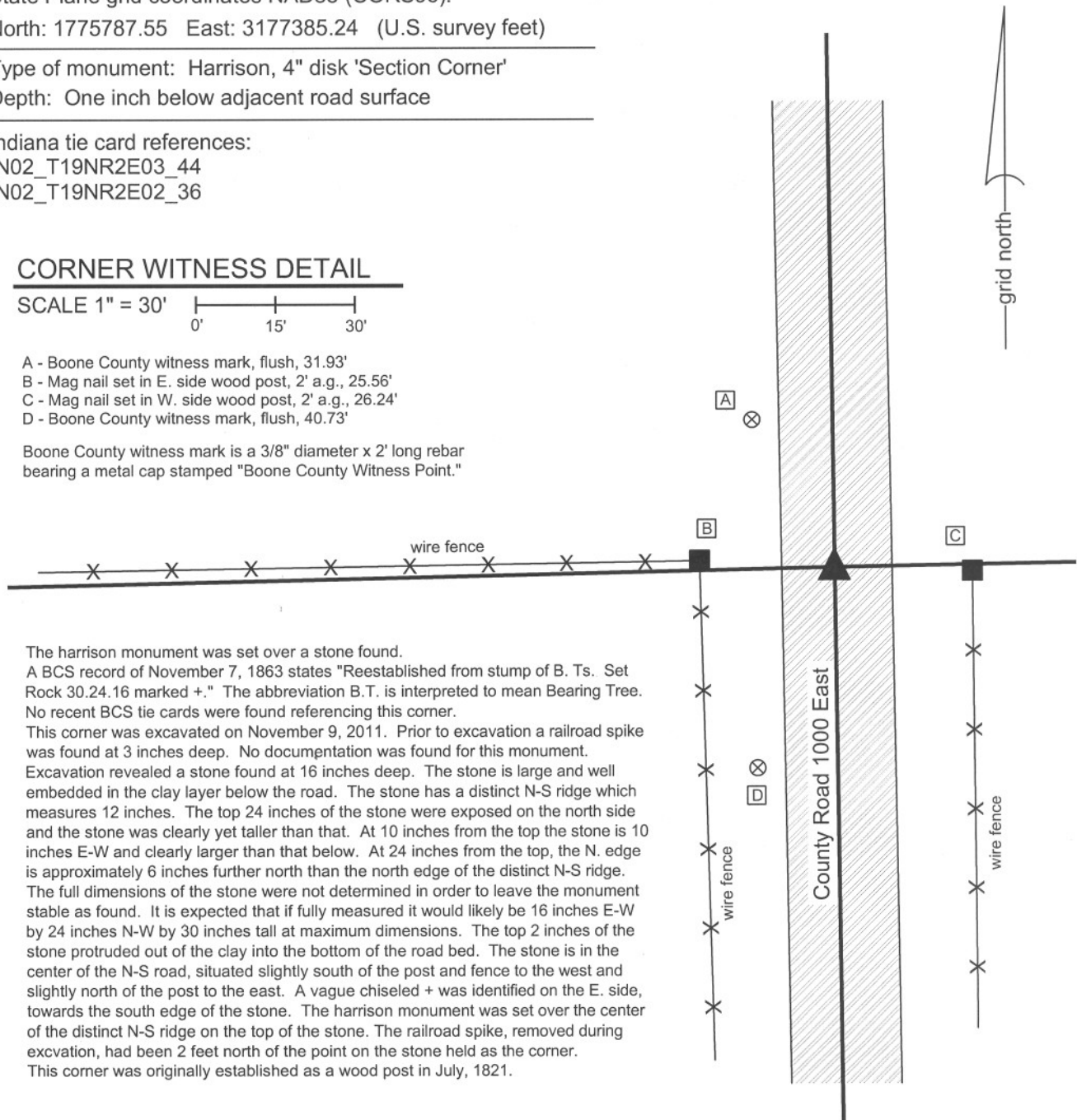
IN02_T19NR2E02_36

CORNER WITNESS DETAIL

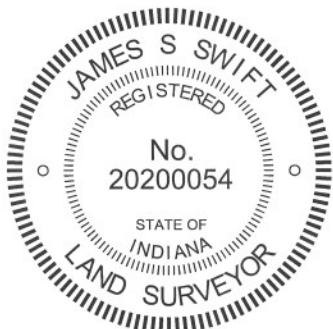
SCALE 1" = 30' 

- A - Boone County witness mark, flush, 31.93'
- B - Mag nail set in E. side wood post, 2' a.g., 25.56'
- C - Mag nail set in W. side wood post, 2' a.g., 26.24'
- D - Boone County witness mark, flush, 40.73'

Boone County witness mark is a 3/8" diameter x 2' long rebar bearing a metal cap stamped "Boone County Witness Point."



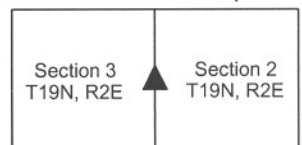
The Harrison monument was set over a stone found. A BCS record of November 7, 1863 states "Reestablished from stump of B. Ts. Set Rock 30.24.16 marked +." The abbreviation B.T. is interpreted to mean Bearing Tree. No recent BCS tie cards were found referencing this corner. This corner was excavated on November 9, 2011. Prior to excavation a railroad spike was found at 3 inches deep. No documentation was found for this monument. Excavation revealed a stone found at 16 inches deep. The stone is large and well embedded in the clay layer below the road. The stone has a distinct N-S ridge which measures 12 inches. The top 24 inches of the stone were exposed on the north side and the stone was clearly yet taller than that. At 10 inches from the top the stone is 10 inches E-W and clearly larger than that below. At 24 inches from the top, the N. edge is approximately 6 inches further north than the north edge of the distinct N-S ridge. The full dimensions of the stone were not determined in order to leave the monument stable as found. It is expected that if fully measured it would likely be 16 inches E-W by 24 inches N-W by 30 inches tall at maximum dimensions. The top 2 inches of the stone protruded out of the clay into the bottom of the road bed. The stone is in the center of the N-S road, situated slightly south of the post and fence to the west and slightly north of the post to the east. A vague chiseled + was identified on the E. side, towards the south edge of the stone. The Harrison monument was set over the center of the distinct N-S ridge on the top of the stone. The railroad spike, removed during excavation, had been 2 feet north of the point on the stone held as the corner. This corner was originally established as a wood post in July, 1821.




Kenneth E. Hedge, County Surveyor


James S. Swift, IN LS 20200054
March 1, 2012

Marion Township



PHOTOGRAPHIC DOCUMENTATION

Date of photography: November 9, 2011

View of the stone as first exposed.



View of the stone more fully exposed.
View is from above and west.



View from the north, looking across the stone
and south along County Road 1000 East.



View of the stone from above.



View of the stone from above and east.



For details and documentation, refer to related sheet "Section Corner Record."