

SECTION CORNER RECORD

SE 000-950

BOONE COUNTY SURVEYOR'S OFFICE

State Plane grid coordinates NAD83 (2011):

North: 1746583.21 East: 3175197.94 (U.S. survey feet)

North: 1746580.25 East: 3175087.76 (U.S. survey feet)

Type of monument: Corner 1: Plug in Monument box, INDOT Type B

Type of monument: Corner 2: Railroad spike

Depth: Flush with adjacent road surface

Indiana tie card references:

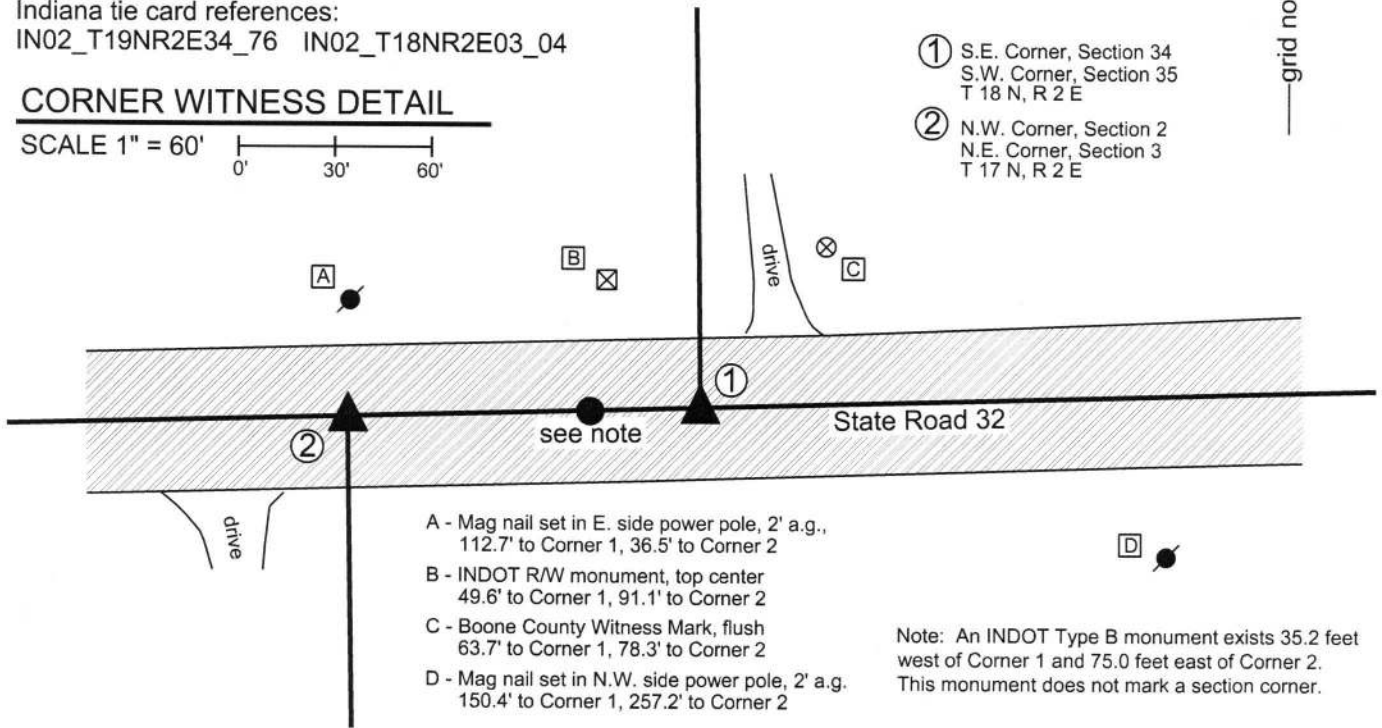
IN02_T19NR2E34_76 IN02_T18NR2E03_04

CORNER WITNESS DETAIL

SCALE 1" = 60'



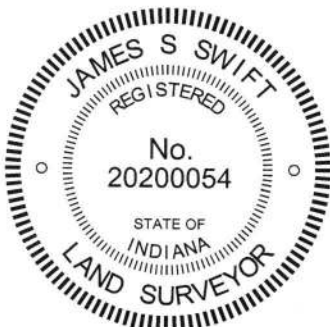
- ① S.E. Corner, Section 34
S.W. Corner, Section 35
T 18 N, R 2 E
- ② N.W. Corner, Section 2
N.E. Corner, Section 3
T 17 N, R 2 E



- A - Mag nail set in E. side power pole, 2' a.g.,
112.7' to Corner 1, 36.5' to Corner 2
- B - INDOT R/W monument, top center
49.6' to Corner 1, 91.1' to Corner 2
- C - Boone County Witness Mark, flush
63.7' to Corner 1, 78.3' to Corner 2
- D - Mag nail set in N.W. side power pole, 2' a.g.
150.4' to Corner 1, 257.2' to Corner 2

Note: An INDOT Type B monument exists 35.2 feet west of Corner 1 and 75.0 feet east of Corner 2. This monument does not mark a section corner.

The INDOT Type B monuments at Corner 1 was found in place. The railroad spike at Corner 2 was set by this office. A BCS record dated March 13, 1946 shows Corner 2 and provides distance ties to two "Sugar" Trees (Maples.) A subsequent record of January 8, 1874 states, with respect to Corner 2, "Reestablished from NE Sugar after boxing. Set two Rocks. One 13.10.6 +, top one 14.12.8+." No specific descriptions were found for Corner 1, nor were any recent BCS tie cards found referencing this set of corners. The exact date of the installation of the Type B monument at Corner 1 is not known, but it is known that this monument replaced a railroad spike which previously existed at this corner. Excavation was not performed at this corner as it is located within a State Highway. The monumented position of Corner 1 fits with the relative positions of proximate corners and is known to have been held for numerous surveys. The Type B monument is accepted as marking Corner 1. The earliest recorded survey which addresses the two corners together is a survey by Evergreen Planners, Inc., dated May 27, 1982, recorded in Survey Book 1, pages 40-41 in the Boone County Recorder's Office, a revised version of which is recorded in Survey Book 1, pages 72-73. The survey established the closing corner (Corner 2) at a distance west of the standard corner (Corner 1) which is the average of the original federal closing distances at the adjacent section corners to the east and west. The separation distance is 110.22 feet (167 links). No interpretations of the location of this corner have been found which contradict this position. The same position was held by a Route Control Survey by Frank T. Luse, INDOT District Surveyor, recorded in Survey Book 13, page 50 in said Recorder's Office. No monument was found marking the corner. A railroad spike was set at Corner 2 on August 28, 2015. Corner 1 was originally established as a wood post in 1819. Corner 2 is not an original federal corner.



Kenneth E. Hedge
Kenneth E. Hedge, County Surveyor

James S. Swift
James S. Swift, IN LS 20200054

March 23, 2017

Union Twp

Section 34
T19N, R2E

Section 3
T18N, R2E

SECTION CORNER RECORD

SE 000-1000

BOONE COUNTY SURVEYOR'S OFFICE

State Plane grid coordinates NAD83 (2011):

North: 1746657.44 East: 3177847.17 (U.S. survey feet)

North: 1746655.70 East: 3177785.15 (U.S. survey feet)

Type of monument: Railroad spike

Depth: Flush with adjacent road surface

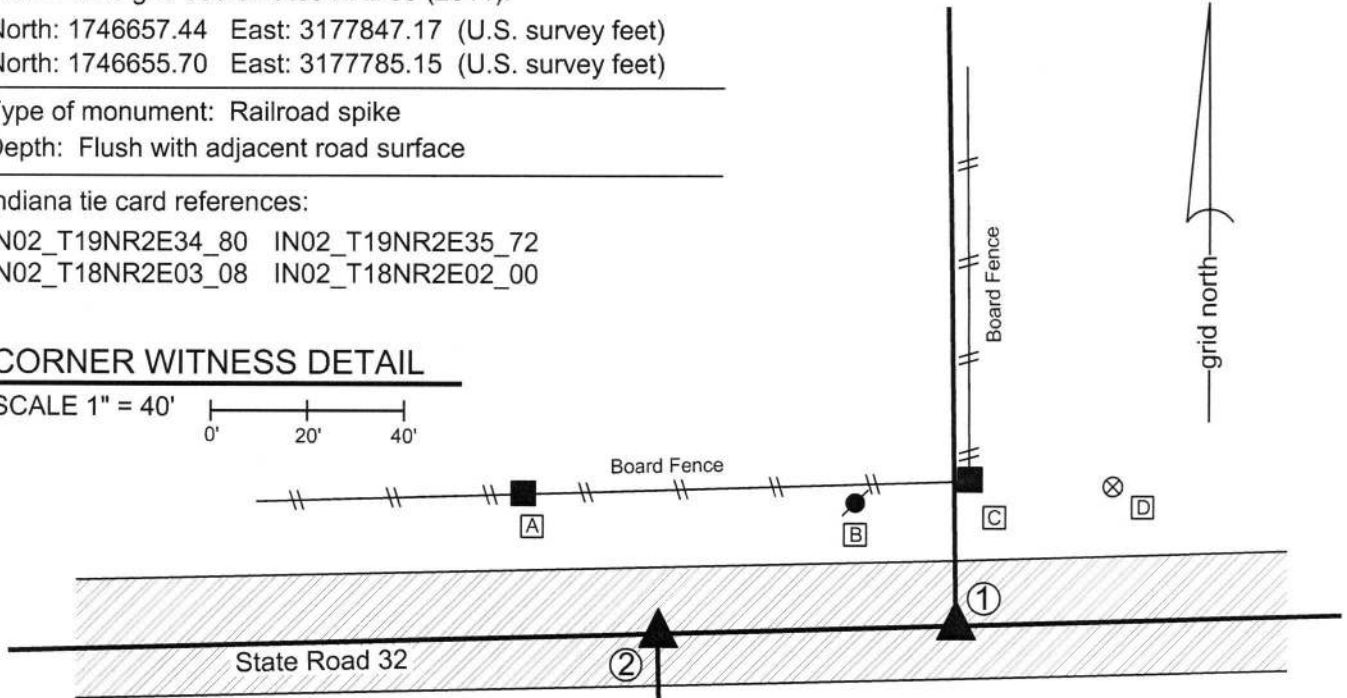
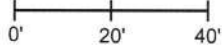
Indiana tie card references:

IN02_T19NR2E34_80 IN02_T19NR2E35_72

IN02_T18NR2E03_08 IN02_T18NR2E02_00

CORNER WITNESS DETAIL

SCALE 1" = 40'



A - Mag nail set in S. edge wood post,
94.5' to corner 1, 40.7' to corner 2

B - Nail in bottle cap found in S.E. side power pole, 1' a.g.
31.2' to corner 1, 50.3' to corner 2

C - Mag nail set in S. side wood post, 0.6' a.g.,
30.1' to corner 1, 72.1' to corner 2

D - Boone County witness mark, flush
43.6' to corner 1, 99.5' to corner 2

① S.E. Corner, Section 34
S.W. Corner, Section 35
T 19 N, R 2 E

② N.W. Corner, Section 2
N.E. Corner, Section 3
T 18 N, R 2 E

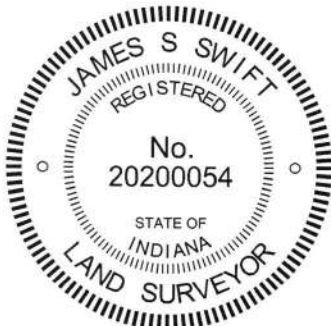
Distance between monuments = 62.04' (94 links)

The railroad spikes were set at calculated positions.

Prior to the establishment of these corners, no existing monuments were found marking the corners, nor were consistent, widely accepted positions found documented for the corners. A Mag nail found in the general vicinity of Corner 1 does not fit with local evidence and was not held as marking the corner. The available evidence which indicates the original positions of these corners was found in the form of the existing roadway of S.R. 32 and a section of ancient fence found existing from approximately one-quarter mile north of Corner 1, north for approximately 250 feet, at which point an ancient corner post exists at the corner of fences to the south and east. The post is witnessed by a rebar situated at the northwest edge of the post. It was discovered that a line prolonged from the west quarter corner of section 25 (see BCS Corner NE-050-1000) through the aforementioned corner post coincides precisely with the remaining section of old fence south of said post. It was also discovered that computing the southeast corner of section 24 (Corner 1) at the point where said prolonged line intersects the center of SR 32, this position fits well with the relative positions of the southwest and south quarter corners of Section 34 and the northwest and north quarter corners of Section 3. Computing the position of Corner 2 at the record closing offset of 94 links west of Corner 1 produces a position which fits generally well with deed descriptions in Section 2 and 3. The computed positions were held as marking the corners. These positions were supplied to INDOT for purposes of determining the locations of the corners for a Location Route Control Survey by INDOT, certified by Frank T. Luse, INDOT District Surveyor, recorded in Survey Book 13, page 50. The computed positions were held by INDOT for the surveys associated with the reconstruction of the intersection of SR 32 and US 431 in 2015. The railroad spikes were set on August 28, 2015. It is noted that a board fence north and slightly east of Corner 1 appears to serve as an animal enclosure, is not associated with existing deed lines and does not appear to be evidence of the original section lines.

Corner 1 was originally established as a wood post in 1819. Corner 2 was originally established as a wood post in 1821.

Union Township



Kenneth E. Hedge
Kenneth E. Hedge, County Surveyor

James S. Swift
James S. Swift, IN LS 20200054
March 23, 2017

Section 34 T19N, R2E	Section 35 T19N, R2E
Section 3 T18N, R2E	Section 2 T18N, R2E

SECTION CORNER RECORD

BOONE COUNTY SURVEYOR'S OFFICE

SE 050-900

State Plane grid coordinates NAD83 (NSRS 2007):
 North: 1744088.54 East: 3172435.13 (U.S. survey feet)

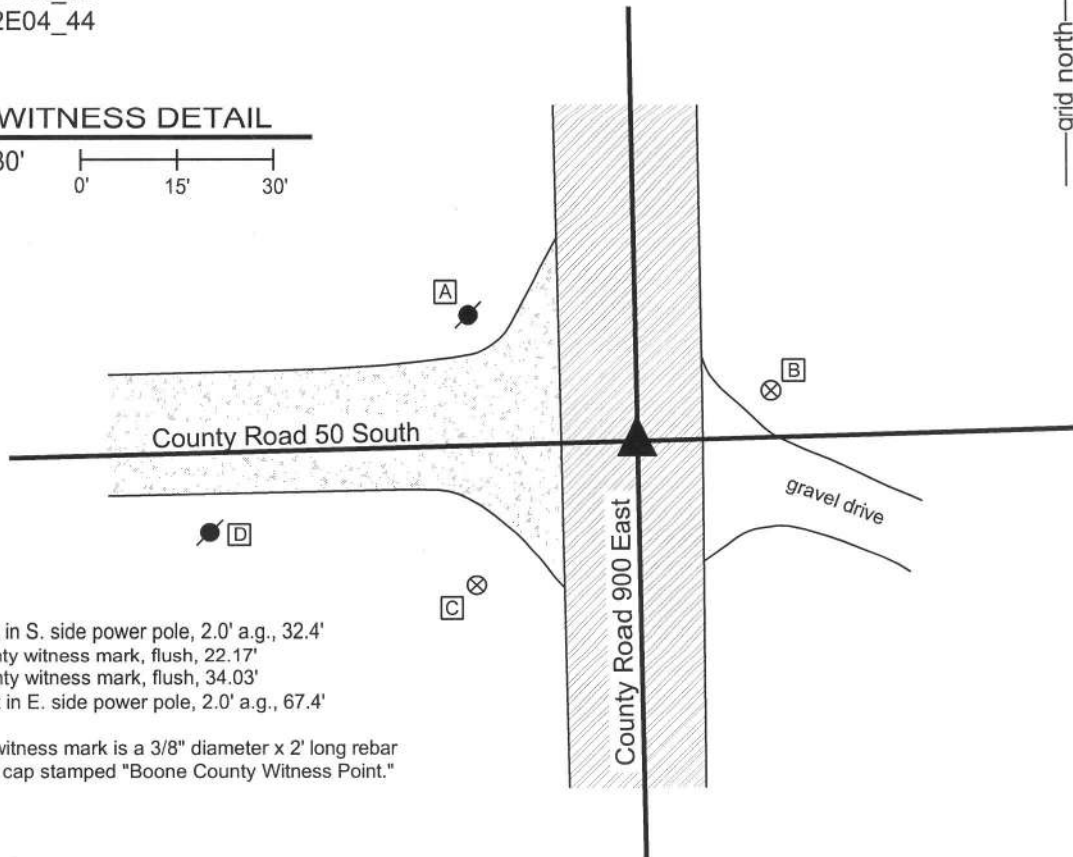
Type of monument: Harrison, 4" disk 'Section Corner'
 Depth: One inch below adjacent road surface

Indiana tie card references:
 IN02_T18NR2E03_36
 IN02_T18NR2E04_44



CORNER WITNESS DETAIL

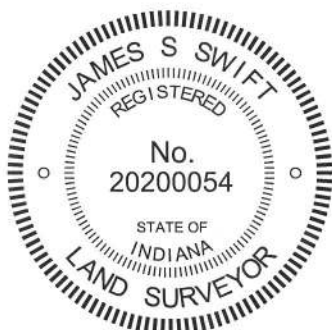
SCALE 1" = 30'
 0' 15' 30'



- A - Mag nail set in S. side power pole, 2.0' a.g., 32.4'
- B - Boone County witness mark, flush, 22.17'
- C - Boone County witness mark, flush, 34.03'
- D - Mag nail set in E. side power pole, 2.0' a.g., 67.4'

Boone County witness mark is a 3/8" diameter x 2' long rebar bearing a metal cap stamped "Boone County Witness Point."

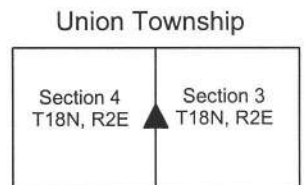
The harrison monument was set in place of a stone found.
 A BCS record of September 20, 1871 states "Reestablished from the corrected line meeting here. Set a Rock 19.8.7 +." A BCS tie card dated June 6, 1991 shows the corner as a 5/8 inch rebar found.
 This corner was excavated on May 1, 2009. A 5/8 inch rebar with a plastic cap stamped "Dodge S0288" was found at 3 inches below grade. A large square topped bolt was found 0.6 foot west of the rebar. The shaft of the bolt was bent at a point 9 inches deep with 8 inches of the bolt extending south from the point where the shaft was bent. The top of the bolt was approximately 1 inch below grade. The bolt had a 1 inch diameter shaft, 2 feet long, with a 1 1/2 inch square head. The record stone was found at 8 inches deep, 1.7 feet south of the rebar. The stone was leaning slightly to the south, as though once hit by a road grader, but was generally vertical. The stone was removed and found to match the record dimensions, though no visible marks were found. With the exception of the slight lean the stone appeared to be undisturbed and was well embedded in the clay. The harrison monument was set in place of the position where the bottom of the stone was embedded in the clay.
 This corner was originally established as a wood post in July, 1821.



Kenneth E. Hedge
 Kenneth E. Hedge, County Surveyor

James S. Swift
 James S. Swift, IN LS 20200054

July 14, 2010, Revised March 7, 2013



PHOTOGRAPHIC DOCUMENTATION

Date of photography: May 1, 2009

The top of the bolt, as found bent.



View of the stone as first exposed.



Exposing the top of the stone.



The stone, as found, leaning slightly to the south.



Stone Hunter Junior Franklin holding the stone vertical, after removal from the road bed.



The stone, temporarily put back in the road bed and stood in vertical orientation.



For details and documentation, refer to related sheet "Section Corner Record."

SECTION CORNER RECORD

SE 050-1000

BOONE COUNTY SURVEYOR'S OFFICE

State Plane grid coordinates NAD83 (2011):

North: 1744264.96 East: 3177836.12 (U.S. survey feet)

Type of monument: 5/8" rebar with metal cap stamped 'Boone County Surveyor'

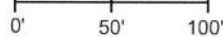
Depth: 14 inches below grade

Indiana tie card references:

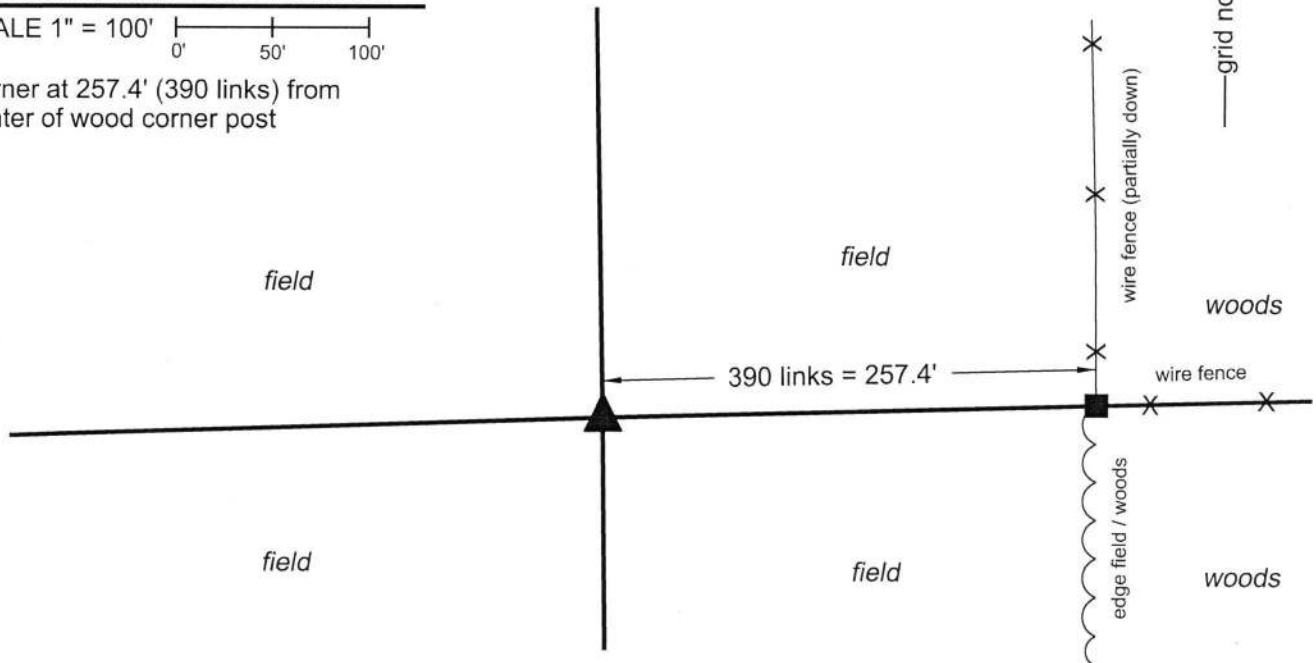
IN02_T18NR2E02_36 IN02_T18NR2E03_44

CORNER WITNESS DETAIL

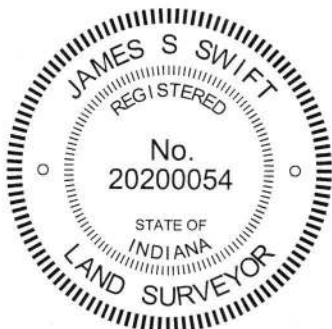
SCALE 1" = 100'




Corner at 257.4' (390 links) from center of wood corner post



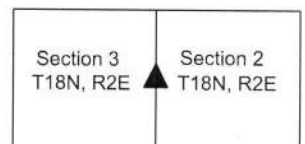
The corner is monumented by a 30 inch length of rebar with metal cap stamped 'Boone County Surveyor' set at 14 inches deep in a tilled field. A BCS record of February 26, 1894 states, with respect to this corner, "Marked + the rock already set." Neither recent BCS tie cards nor surveys recorded in the Office of the Boone County Recorder were found referencing this corner. This corner was monumented on May 3, 2019. The corner falls in a tilled field and no evidence of the corner was found in the immediate vicinity of the corner. However, an ancient fence does exist along parts of the line between the westerly terminus of the fence, 257.4 feet east of the corner and a railroad rail shown by this office to be at the center of section 2. Two different distances are reported for the surrounding and adjacent deeds. The current description for the land surrounding the corner calls for a point on the south line of the northeast quarter of section 2, said point being 257.40 feet easterly of the subject corner. The current description for the land to the east of the field in which the subject corner is located calls for beginning 259.95 feet easterly of the corner. As noted above, a wood corner post was found at the westerly terminus of an ancient fence to the east. No rebars or other survey monuments were found in the vicinity of the post and the post appears to represent the best evidence of the ancient property corner. To resolve the ambiguity with respect to the different deed distances, an older deed was found for the land to the east. This deed, from the Estate of Charles Alvin Taylor to Edward R. Atkins, dated April 11, 1964 and recorded in Deed Record 176, page 586 in the Office of the Boone County Recorder calls for a distance of 390 links (257.4 feet) from the subject corner. Hence, the ambiguity of the distances was resolved in favor of the 257.4 foot dimension. No survey or other supporting evidence was found to support the 259.95 foot dimension. The corner was established on the westerly prolongation of a line connecting the railroad rail at the center of section 2 and the aforementioned wood corner post and westerly terminus of the standing fence, 257.40 feet from the center of the post. This corner was originally established as a wood post in 1821.




Kenneth E. Hedge, County Surveyor


James S. Swift, IN LS 20200054
June 26, 2019

Union Township



SECTION CORNER RECORD

SE 100-900

BOONE COUNTY SURVEYOR'S OFFICE

State Plane grid coordinates NAD83 (NSRS 2007):

North: 1741442.23 East: 3172484.20 (U.S. survey feet)

Type of monument: Harrison, 4" disk 'Section Corner'

Depth: One inch below adjacent road surface

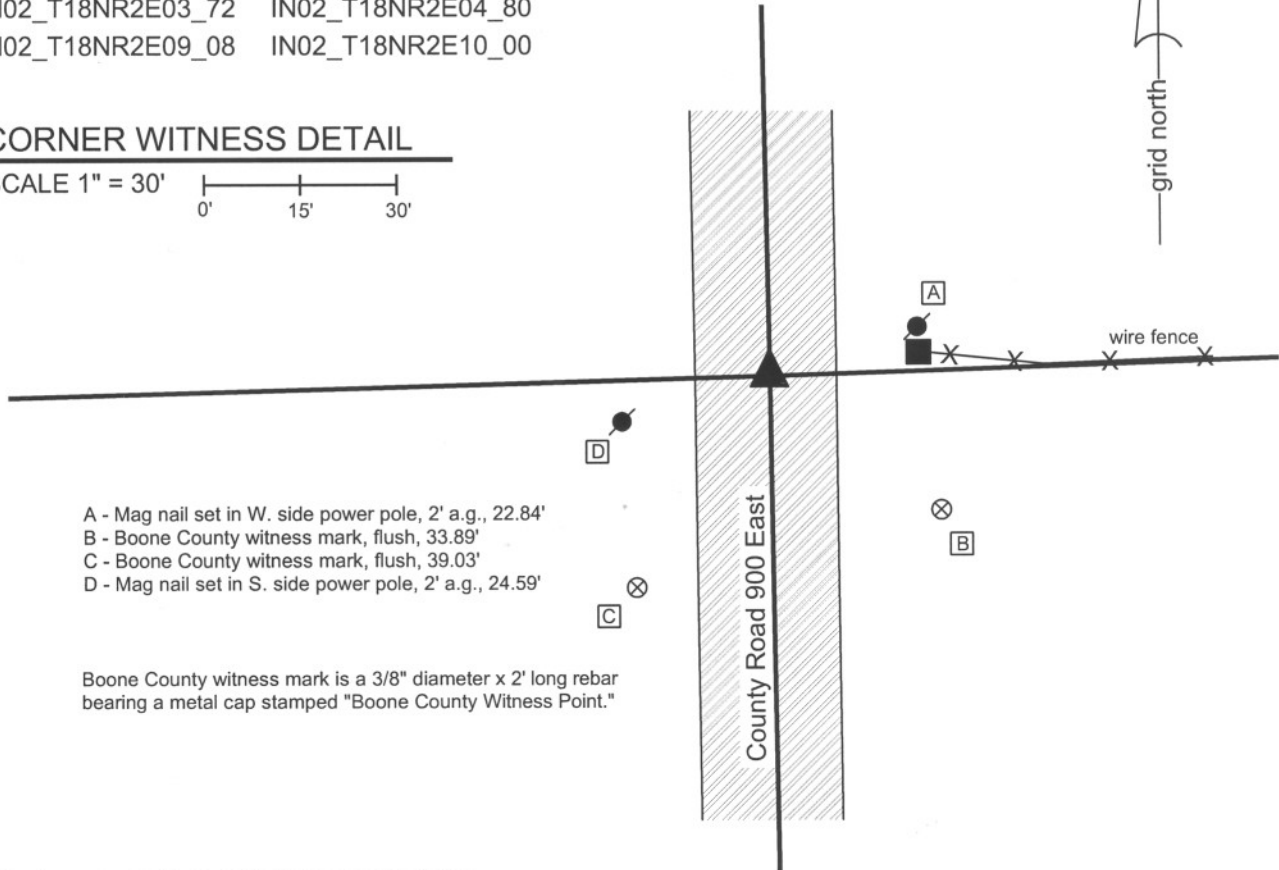
Indiana tie card references:

IN02_T18NR2E03_72 IN02_T18NR2E04_80

IN02_T18NR2E09_08 IN02_T18NR2E10_00

CORNER WITNESS DETAIL

SCALE 1" = 30'



- A - Mag nail set in W. side power pole, 2' a.g., 22.84'
- B - Boone County witness mark, flush, 33.89'
- C - Boone County witness mark, flush, 39.03'
- D - Mag nail set in S. side power pole, 2' a.g., 24.59'

Boone County witness mark is a 3/8" diameter x 2' long rebar bearing a metal cap stamped "Boone County Witness Point."

The Harrison monument was set in place of a stone found.

A BCS record of August 16, 1892 states "Found from north beech, placed a small rock at corner but no mark on it." A BCS tie card dated June 6, 1991 shows the corner as a 5/8 inch rebar found. This corner was excavated on May 15, 2009. Prior to excavation, a 5/8 inch rebar was found in a hole in the asphalt at 8 inches below grade. Excavation revealed a stone found at 6 inches deep, slightly south and east of the rebar. The stone is embedded in the clay layer below the road, protruding approximately 1 inch out of the clay. The stone was 9 inches E-W by 7 inches N-S and 10 inches tall. No specific marks were found on the stone. The stone is in line with the fence to the east. It is noted that the stone was shallow but embedded in the clay, due to a road bed of minimal thickness. The 1876 map of Boone County does not show this section of road, indicating that this corner was not crossed by an early wagon road. This may explain the lack of depth to the road bed, as the lower portion of the road is typically of the loose sandy, gravel material which was placed on the wagon roads. This section of road does not contain this material, with asphalt over modern road stone directly over the clay layer. The stone was removed and the Harrison monument was set in its place. The rebar, removed during excavation, was 0.7 foot north and 0.2 foot east of the stone. This corner was originally established as a wood post in July, 1821.



Kenneth E. Hedge
 Kenneth E. Hedge, County Surveyor

James S. Swift
 James S. Swift, IN LS 20200054
 July 14, 2010

Union Township

Section 4 T18N, R2E	Section 3 T18N, R2E
Section 9 T18N, R2E	Section 10 T18N, R2E

PHOTOGRAPHIC DOCUMENTATION

Date of photography: May 15, 2009

The stone, removed from the road bed and stood in the orientation in which it was found. View is of the west side of the stone, as found.



View from the north, looking across the stone and south along County Road 900 East.



For details and documentation, refer to related sheet "Section Corner Record."

SECTION CORNER RECORD

BOONE COUNTY SURVEYOR'S OFFICE

SE 100-950

State Plane grid coordinates NAD83 (NSRS 2007):
 North: 1741501.00 East: 3175174.34 (U.S. survey feet)

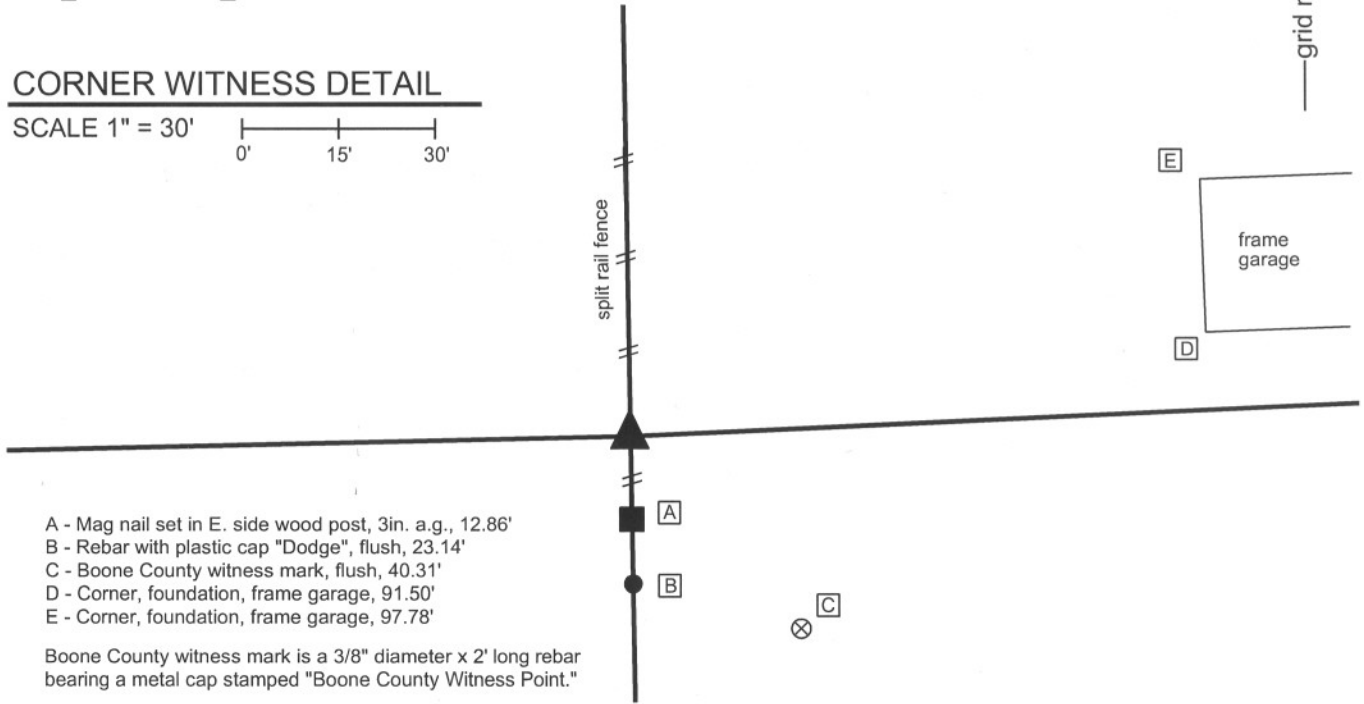
Type of monument: Harrison, 4" disk 'Section Corner'
 Depth: flush with adjacent ground

Indiana tie card references:
 IN02_T19NR2E03_76
 IN02_T19NR2E10_04



CORNER WITNESS DETAIL

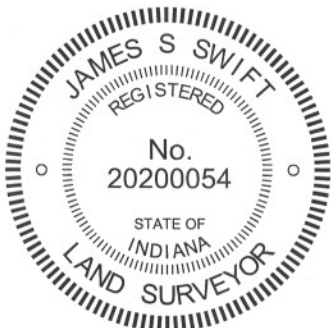
SCALE 1" = 30'



- A - Mag nail set in E. side wood post, 3in. a.g., 12.86'
- B - Rebar with plastic cap "Dodge", flush, 23.14'
- C - Boone County witness mark, flush, 40.31'
- D - Corner, foundation, frame garage, 91.50'
- E - Corner, foundation, frame garage, 97.78'

Boone County witness mark is a 3/8" diameter x 2' long rebar bearing a metal cap stamped "Boone County Witness Point."

The harrison monument was set in place of a railroad rail found.
 A BCS record of August 16, 1892 refers to this corner as "a stake." The corner is shown as the terminal point for measurements of records from 1834, 1837, 1846 and 1853, with no description of a monument. No recent BCS tie cards were found referencing this corner.
 this corner.
 A railroad rail was found existing at this corner is August 2011. The source of the rail is not known, though it is most likely that it was set either by field crews from this office, or field crews working for former County Surveyor Carl Anderson in the 1970s. The position of the rail fits with adjoining deed descriptions tie to this corner and has also been held as the corner for private surveys, including a survey by Banning Engineering, P.C., dated October 14, 1999 and recorded in Survey Book 4, page 15 in the Boone County Recorder's Office. Generally probing and light excavation in the vicinity of the rail yielded no further evidence of the corner. The rail was held as marking the corner. The rail was removed and replaced with a harrison monument in the same position on August 17, 2011.
 This corner was originally established as a wood post in 1821.



Kenneth E. Hedge
 Kenneth E. Hedge, County Surveyor

James S. Swift
 James S. Swift, IN LS 20200054
 March 1, 2012

Union Twp

