

SECTION CORNER RECORD

SE 050-300

BOONE COUNTY SURVEYOR'S OFFICE

State Plane grid coordinates NAD83 (NSRS 2007):
North: 1743422.10 East: 3140493.45 (U.S. survey feet)

Type of monument: Harrison, 4" disk 'Section Corner'
Depth: One inch below adjacent road surface

Indiana tie card references:
IN02_T18NR1E03_36
IN02_T18NR1E04_44

CORNER WITNESS DETAIL

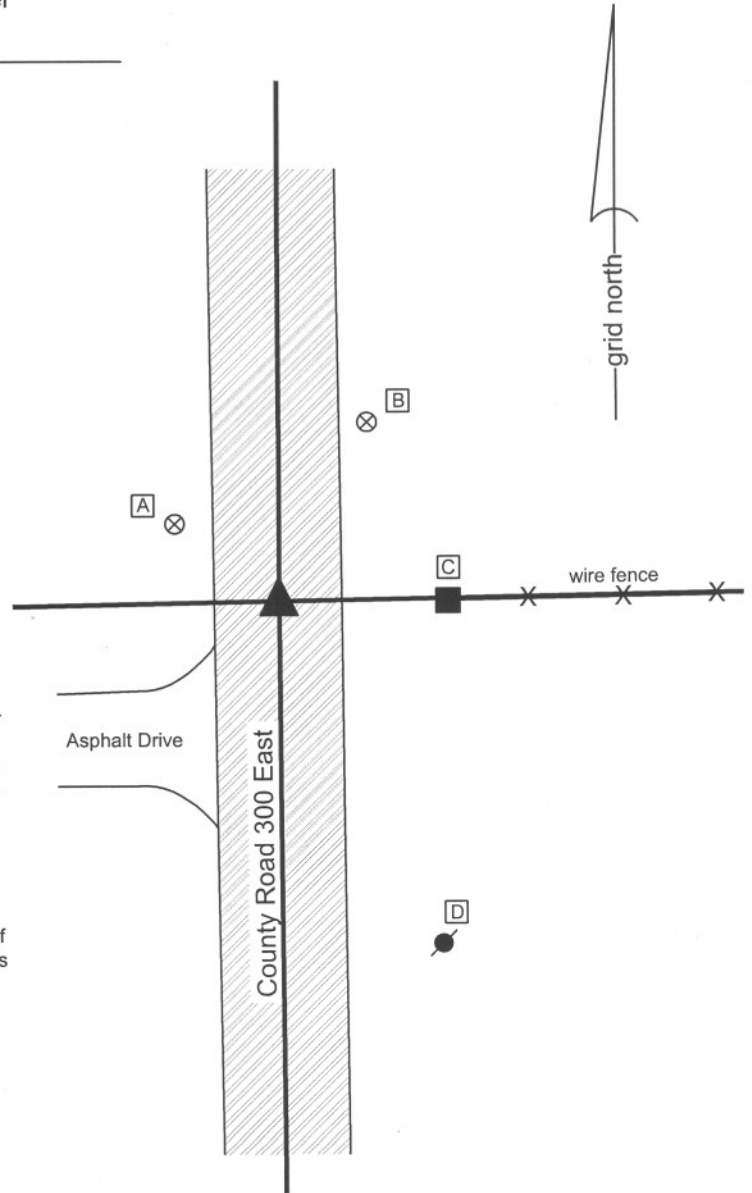
SCALE 1" = 30'
0' 15' 30'

- A - Boone County witness mark, flush, 20.24'
- B - Boone County witness mark, flush, 31.18'
- C - Mag nail set on N. side wood post, 1.2' a.g., 25.80'
- D - Mag nail set on N. side power pole, 2.0' a.g., 57.87'

Boone County witness mark is a 3/8" diameter x 2' long rebar bearing a metal cap stamped "Boone County Witness Point."

The harrison monument was set over the top, center of a stone found. A BCS tie card dated October 25, 2005 calls for a steel rail with no documentation of source. No other specific BCS records were found for this corner, though it is depicted in the record as a terminal point for measurements in 1853 and 1859.

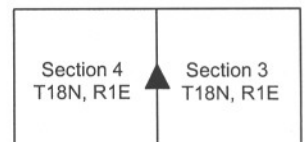
This corner was excavated on October 22, 2009. Prior to excavation a railroad rail was visible in a hole at 4 inches below grade. A stone was found at 6 inches deep, approximately 0.2 foot north and 0.6 foot east of the rail. The stone measures 4 inches N-S by 8 inches E-W by 17 inches tall. The stone was well embedded in the clay layer at the bottom of the road, protruding approximately 4 inches out of the clay and into the bottom layer of the road bed and appeared to be undisturbed. The railroad rail was approximately along the west side of the stone. No documentation was found with respect to the rail and it is not known whether the rail was intended to witness the stone or whether it was intended to represent the actual corner. The rail and the stone were both removed during excavation. The harrison monument was set at the position of the top center of the stone. This corner was originally established as a wood post in June, 1822.



Kenneth E. Hedge
Kenneth E. Hedge, County Surveyor

James S. Swift
James S. Swift, IN LS 20200054
July 14, 2010

Center Township



PHOTOGRAPHIC DOCUMENTATION

Date of photography: October 22, 2009

View of the stone as first exposed, along with the railroad rail.



View of the stone from the south.



View from the north, looking across the stone and south along County Road 300 East.



View from the west, looking across the stone and east along the fence to the east.



For details and documentation, refer to related sheet "Section Corner Record."

SECTION CORNER RECORD

BOONE COUNTY SURVEYOR'S OFFICE

SE 050-400

State Plane grid coordinates NAD83 (NSRS 2007):

North: 1743526.57 East: 3145783.12 (U.S. survey feet)

Type of monument: Harrison, 4" disk 'Section Corner'

Depth: One inch below adjacent road surface

Indiana tie card references:

IN02_T18NR1E02_36

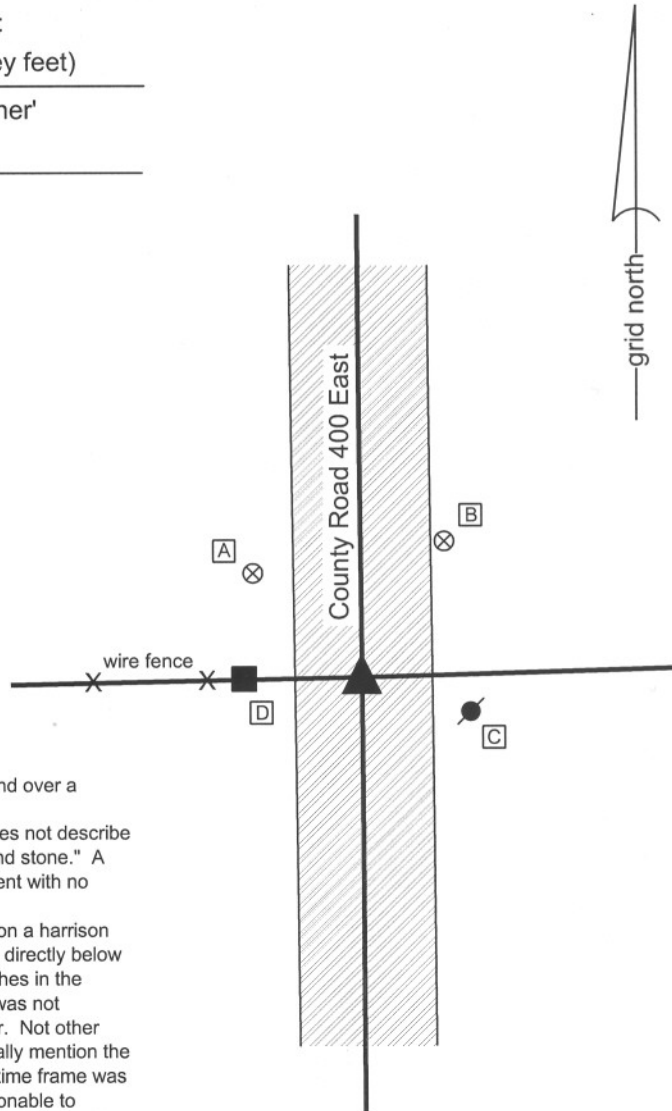
IN02_T18NR1E03_44

CORNER WITNESS DETAIL

SCALE 1" = 30'

- A - Boone County witness mark, flush, 23.50'
- B - Boone County witness mark, flush, 24.92'
- C - Mag nail set in N. side power pole, 2.0' a.g., 16.7'
- D - Mag nail set in E. side wood post, 0.5' a.g., 16.3'

Boone County witness mark is a 3/8" diameter x 2' long rebar bearing a metal cap stamped "Boone County Witness Point."



The Harrison monument was set in place of a harrison monument found over a railroad rail.

A BCS record of 1859 states that the corner was reestablished but does not describe how it was monumented. A BCS tie card of October 1975 states "found stone." A BCS tie card of October 2005 shows the corner as a harrison monument with no documentation of source.

This corner was excavated on September 10, 2009. Prior to excavation a harrison monument was found at the surface. A railroad rail on end was found directly below the harrison at 10 inches deep. A small stone was also found at 8 inches in the vicinity of the rail, but was located within the gravel layer of the road, was not embedded in the clay and was not accepted as evidence of the corner. No other evidence was found. Though the 1975 record does not state specifically mention the rail, it is known that the practice of fields crews from this office in that time frame was to remove the found stone and replace it with a railroad rail. It is reasonable to conclude that the stone was removed in 1975 and that the rail represents the best evidence of the location of the stone.

A new harrison monument was set in the position of the previous harrison and the railroad rail, both of which were removed during excavation.

This corner was originally established as a wood post in June, 1820.



Kenneth E. Hedge
Kenneth E. Hedge, County Surveyor

James S. Swift
James S. Swift, IN LS 20200054
July 14, 2010

Center Twp Worth Twp

Section 3 T18N, R1E	▲	Section 2 T18N, R1E
------------------------	---	------------------------

SECTION CORNER RECORD

SE 100-300

BOONE COUNTY SURVEYOR'S OFFICE

State Plane grid coordinates NAD83 (NSRS 2007):

North: 1740760.62 East: 3140515.09 (U.S. survey feet)

Type of monument: Harrison, 4" disk 'Section Corner'

Depth: One inch below adjacent road surface

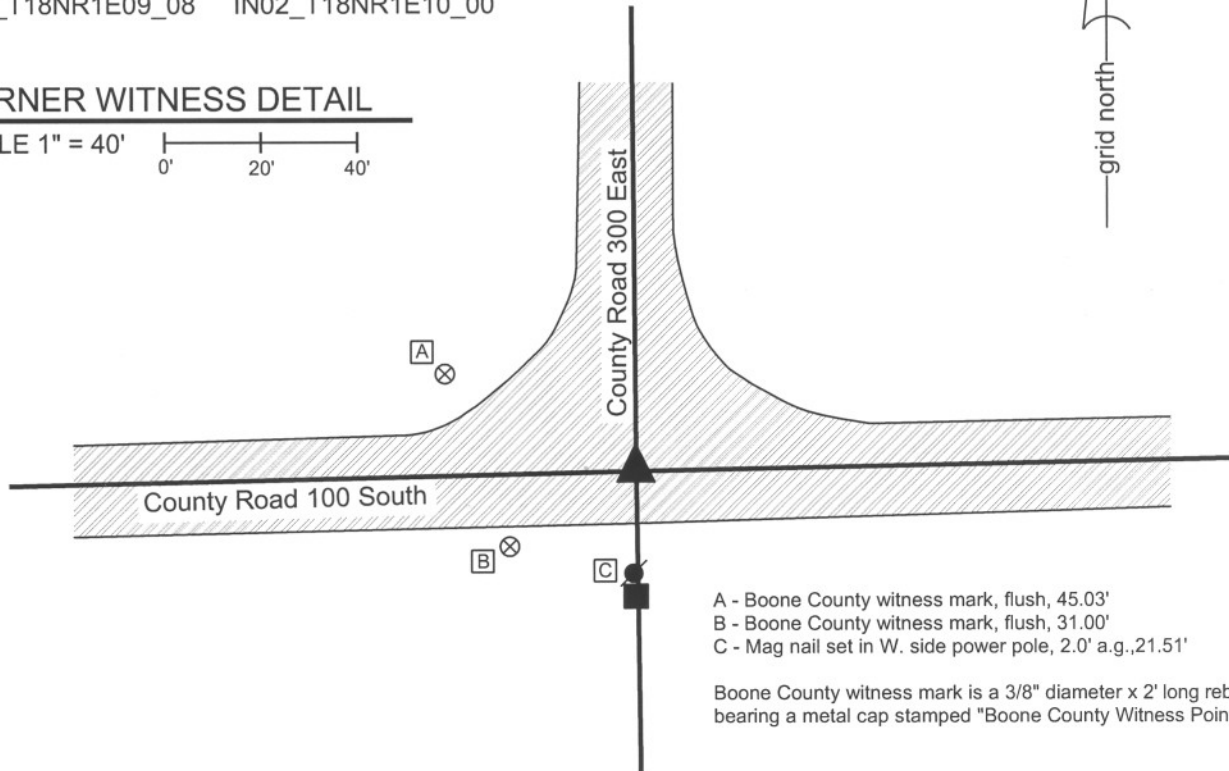
Indiana tie card references:

IN02_T18NR1E03_72 IN02_T18NR1E04_80

IN02_T18NR1E09_08 IN02_T18NR1E10_00

CORNER WITNESS DETAIL

SCALE 1" = 40'



- A - Boone County witness mark, flush, 45.03'
- B - Boone County witness mark, flush, 31.00'
- C - Mag nail set in W. side power pole, 2.0' a.g., 21.51'

Boone County witness mark is a 3/8" diameter x 2' long rebar bearing a metal cap stamped "Boone County Witness Point."

The harrison monument was set over the etched "+" on a stone found.

A BCS record of February 19, 1876 states "Reestablished at the intersection of lines. Set 2 rocks. Lower one 9,9,12 + on top. Upper one 7,12,14 + on top side." A BCS tie card dated October 1975 states "Stone found + rail 6". A BCS information sheet dated August 5, 1989 calls for a railroad rail found. A BCS tie card dated June 20, 1991 shows the corner as a railroad rail found. A BCS tie card dated October 15, 2005 shows the corner as a harrison monument with no documentation of source.

This corner was excavated on August 14, 2009. Prior to excavation a harrison monument was visible at the surface. Excavation revealed a railroad rail found at 12 inches deep. The harrison monument had been 0.2 feet west of the rail. A stone was found at 20 inches deep north and west of the rail. This stone was entirely within the road material and did not match the record descriptions. It was removed. Another stone was found directly below at 25 inches deep. This stone is 14 inches EW by 12 inches NS by 7 inches thick, matching the record description for the upper stone as described in the 1876 record. This stone was also removed. The record lower stone was found below it at 33 inches deep. This stone is 12 inches NS by 9 inches EW and fully embedded in the clay layer below the base of the road. The total height was not measured. A vague chiseled "+" was found at the top, high point of the stone, towards the southeast corner of the stone. The harrison monument was set over the chiseled "+". The old harrison monument had been 0.6 foot south and 0.2 foot east of the chiseled "+" on the stone.

This corner was originally established as a wood post in June, 1820.



Kenneth E. Hedge
 Kenneth E. Hedge, County Surveyor

James S. Swift
 James S. Swift, IN LS 20200054
 July 14, 2010

Center Township

Section 4 T18N, R1E	Section 3 T18N, R1E
Section 9 T18N, R1E	Section 10 T17N, R1E

PHOTOGRAPHIC DOCUMENTATION

Date of photography: August 14, 2009

View of the railroad rail as first exposed.



View of the upper most stone as first exposed.



View of the second stone found, being the upper stone described in the 1876 record.



View of the third stone found, being the lower stone described in the 1876 record.



Close-up of the lower record stone.



The lower record stone. The point of the chaining pin marks the etched mark on the stone.



For details and documentation, refer to related sheet "Section Corner Record."

SECTION CORNER RECORD

SE 100-350

BOONE COUNTY SURVEYOR'S OFFICE

State Plane grid coordinates NAD83 (NSRS 2007):

North: 1740813.55 East: 3143167.56 (U.S. survey feet)

Type of monument: Harrison, 4" disk 'Section Corner'

Depth: One inch below adjacent road surface

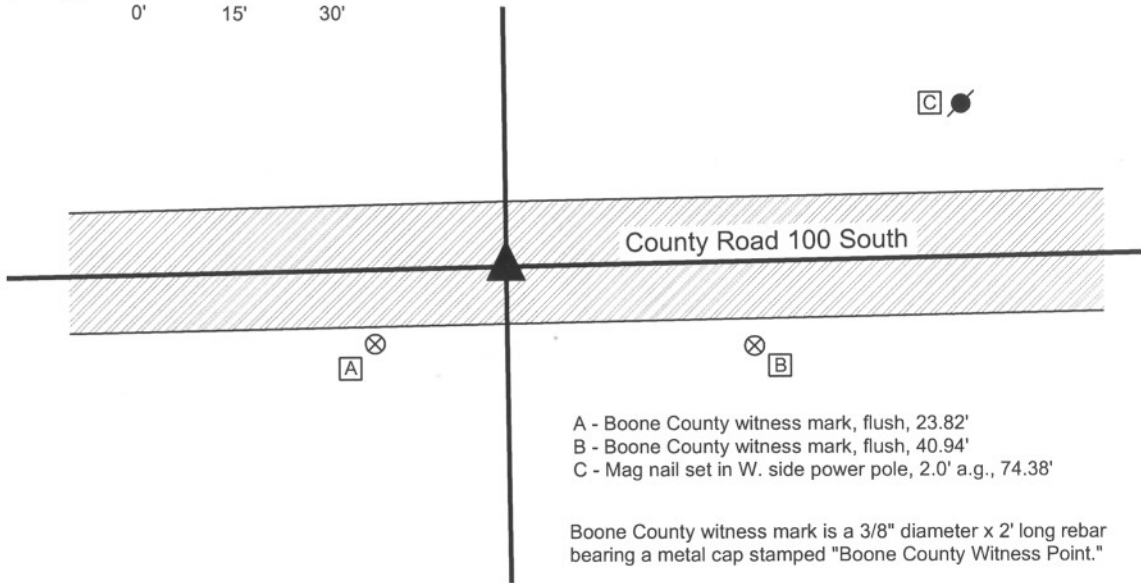
Indiana tie card references:

IN02_T18NR1E03_76

IN02_T18NR1E10_04

CORNER WITNESS DETAIL

SCALE 1" = 30'



The harrison monument was set directly over a stone found.

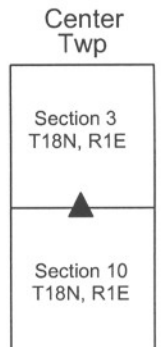
A BCS Record of August 16, 1869 refers to this corner and the corner one-half mile east as "Stones that were set." A BCS record of February 5, 1872 also refers to this corner as "A stone that was set." It is believed that this terminology was intended to mean that the stone was found and appeared to be a monument intentionally set in the past. A BCS record of November 1, 1912 refers to the corners as "Found rock set." A BCS tie card dated January 18, 1994 shows the corner as a railroad spike with no documentation of source. A BCS tie card dated October 15, 2005 shows the corner as a harrison monument, also with no documentation of source.

This corner was excavated on October 28, 2009. Prior to excavation a harrison monument was visible at the surface. Excavation revealed no metal monument below the harrison. Excavation did reveal a stone found at 13 inches deep. The stone was fully embedded in the clay layer below the road, with the top of the stone at the top of the clay layer. With 10 inches of the stone exposed, the monument measured 12 inches E-W by 12 inches N-S and remained completely stable, indicating that it extends deeper into the clay. No visible marks were found on the stone. The high point of the stone, which is at the top, center was held as the corner. The harrison monument was set over this point. The previously existing harrison monument had been south and east of the stone and was not over any part of the stone. The new harrison monument is 0.25 feet North and 0.5 feet West of the previous harrison. It is noted that the original federal measurements to this corner indicate that it was set at the midpoint between the corners to the east and west. However, as found and measured in 2009, the south line of the southwest quarter is approximately 20 feet longer than the south line of the southeast quarter. The BCS "Surveyor's Record" demonstrates that this inequality has long existed and is also demonstrated by measurements performed in 1869 and 1898. This corner was originally established as a wood post in June, 1820.



Kenneth E. Hedge
 Kenneth E. Hedge, County Surveyor

James S. Swift
 James S. Swift, IN LS 20200054
 July 14, 2010



PHOTOGRAPHIC DOCUMENTATION

Date of photography: October 28, 2009

View of the stone as first exposed.



View of the stone more fully exposed.



View from the east, looking across the stone and west along County Road 100 South.



View from above the stone, looking east along County Road 100 South.



For details and documentation, refer to related sheet "Section Corner Record."

SECTION CORNER RECORD

SE 100-400

BOONE COUNTY SURVEYOR'S OFFICE

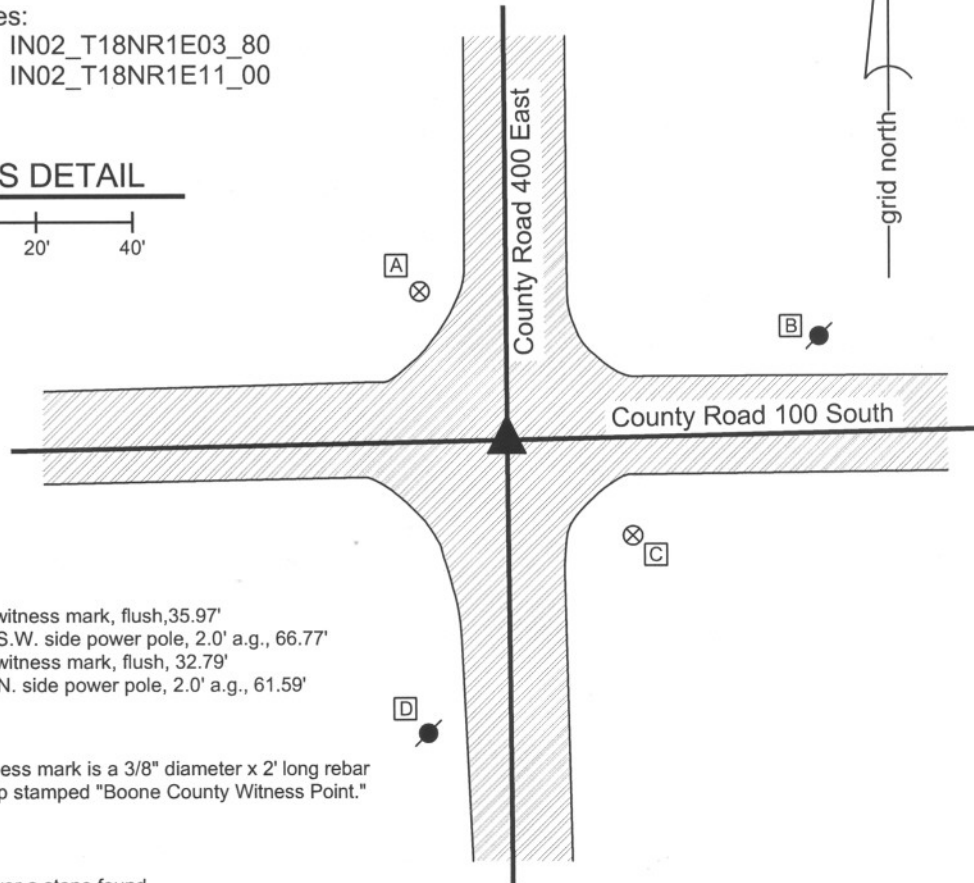
State Plane grid coordinates NAD83 (NSRS 2007):
North: 1740865.64 East: 3145800.70 (U.S. survey feet)

Type of monument: Harrison, 4" disk 'Section Corner'
Depth: One inch below adjacent road surface

Indiana tie card references:
IN02_T18NR1E02_72 IN02_T18NR1E03_80
IN02_T18NR1E10_08 IN02_T18NR1E11_00

CORNER WITNESS DETAIL

SCALE 1" = 40'
0' 20' 40'



- A - Boone County witness mark, flush, 35.97'
- B - Mag nail set in S.W. side power pole, 2.0' a.g., 66.77'
- C - Boone County witness mark, flush, 32.79'
- D - Mag nail set in N. side power pole, 2.0' a.g., 61.59'

Boone County witness mark is a 3/8" diameter x 2' long rebar bearing a metal cap stamped "Boone County Witness Point."

The Harrison monument was set over a stone found.
 A BCS Record of August 16, 1869 refers to this corner and the corner one-half mile west as "Stones that were set." It is believed that this terminology was intended to mean that the stone were found and appeared to be monuments intentionally set in the past. A BCS record of November 1, 1912 refers to the corners as "Found rock set." A BCS tie card dated August 16, 1967 states "no stone" and demonstrates a location for the corner but does not state what monument was set. A BCS tie card dated October 15, 2005 shows the corner as a Harrison monument with no documentation of source.
 This corner was excavated on August 11, 2009. Prior to excavation a Harrison monument was visible at the surface. Excavation revealed a railroad rail at 9 inches deep, directly below the Harrison monument. Although not documented as such, it is likely that the railroad rail was set on August 16, 1967. Further excavation revealed a wood stake found at 8 inches deep, south and west of the Harrison and railroad rail. A stone was found at 21 inches deep, directly below the wood stake. The stone is embedded in the clay layer below the road, with approximately 2 inches protruding out the clay and into the base layer of the road. With 8 inches exposed, the stone measures 12 inches N-S by 10 inches E-W and remained entirely stable, indicating that it extends further into the clay layer. No specific markings were found on the stone. The Harrison monument was set over the top, center of the stone. The previous Harrison and railroad rail, both of which were removed during excavation, had been 3.4 feet north and 0.9 feet east.
 This corner was originally established as a wood post in June, 1820.



Kenneth E. Hedge
 Kenneth E. Hedge, County Surveyor

James S. Swift
 James S. Swift, IN LS 20200054
 July 14, 2010

Center Twp	Worth Twp
Section 3 T18N, R1E	Section 2 T18N, R1E
Section 10 T18N, R1E	Section 11 T18N, R1E

PHOTOGRAPHIC DOCUMENTATION

Date of photography: August 11, 2009

View of the stone as first exposed.



View of the stone more fully exposed.



View from the east, looking across the stone and west along County Road 100 South.



View from the north, looking across the stone and south along County Road 400 East.



For details and documentation, refer to related sheet "Section Corner Record."