

SECTION CORNER RECORD

SE 600-900

BOONE COUNTY SURVEYOR'S OFFICE

State Plane grid coordinates NAD83 (NSRS 2007):

North: 1715051.65 East: 3172786.80 (U.S. survey feet) (standard corner)

North: 1715056.74 East: 3172956.22 (U.S. survey feet) (closing corner)

Type of monument: Harrison, 4" disk 'Section Corner'

Depth: Corner 1: flush. Corner 2: two inches above grade.

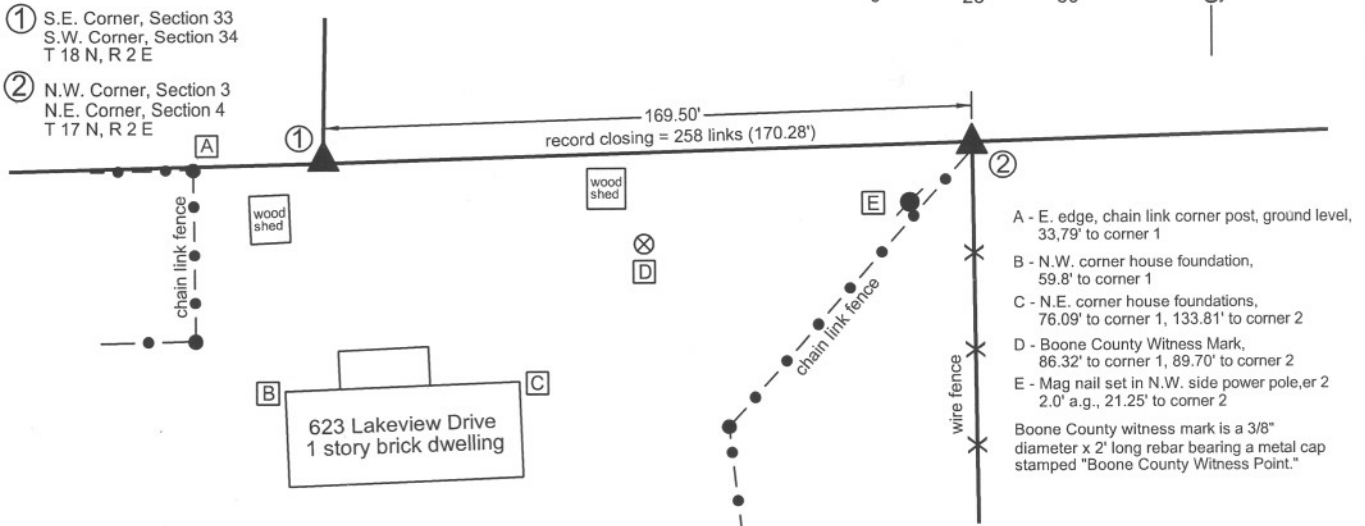
Indiana tie card references:

IN02_T17NR2E03_08 IN02_T17NR2E04_00

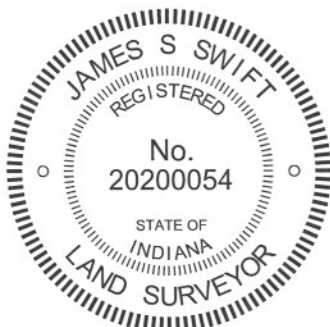
IN02_T18NR2E33_80 IN02_T18NR2E34_72

CORNER WITNESS DETAIL

SCALE 1" = 50'



The harrison monument at the standard corner (corner 1) was set in place of a stone found. The harrison monument at the closing corner (corner 2) was set on line between corner 1 and the standard corner one-half mile east, and immediately north of an iron pipe held previously identified as the corner. Neither of these corners are specifically described in the BCS Surveyor's Record. Corner 1 is mentioned as the terminal point for measurements in records of 1834, 1883 and 1894. Corner 2 is mentioned as such in records of 1836, 1857, 1894. A BCS tie card dated May 23, 1991 shows the corner as a "suck rod" found on the south side of an 8x8 inch wood post. This "suck rod" has been held for many private surveys since, most noting it as an iron pipe. This corner was excavated on September 23, 2008. Prior to excavation, the "suck rod" was visible in the vicinity of corner 2, being a one-inch diameter iron pipe. The post referred to in the 1991 tie card was broken off, but the base of the post was still present in the ground. Excavation around the post yielded several rocks, none of which could be positively identified as being a specific corner stone and all of which appeared to be rocks set for the purposes of bracing the post. In the vicinity of corner 1, a steel fence post broken off at the ground was found with a magnetic locator. Excavation yielded remnants of a wood post immediately south of the steel post. At the southeast edge of the post remnants two stones were found on top of each other. The top stone was 9 inches tall by 6 inches E-W by 3 inches N-S. While this is somewhat small for a section corner stone, it bore the characteristics of a corner stone in its orientation, being vertical and oriented in cardinal directions. Another stone was found directly below, measuring 6x5x4 inches. Other rocks were not found around the remnants of the post. The two found stones did not appear to be brace rocks and did appear to be specific corner monuments. The stones were removed and the harrison monument was set in their place. The distance from corner 1, as so established and monumented to the iron pipe previously held as corner 2 is within one foot of the original closing distance. The pipe was at the south edge of the base of the old corner post, with no specific documentation found for this placement. The township line, connected from corner 1 to the standard corner one-half mile east (see SE-600-950) falls on the north side of the post. Given the previous references to the pipe or suck rod as the corner, the pipe was held to define the E-W position of the corner. The township line was held to define the N-S position and corner 2 was established on the township line, immediately north of the iron pipe. This point is 1.25 feet north of the position of the iron pipe (removed) and at the north edge of the base of the old 8x8 inch wood post. A harrison monument was set at this computed position for corner 2 on September 18, 2009. The standard corner was originally established as a wood post in 1819 and another wood post was set at the closing corner in 1821.



Kenneth E. Hedge
Kenneth E. Hedge, County Surveyor

James S. Swift
James S. Swift, IN LS 20200054
July 14, 2010, Revised March 1, 2012

Eagle Township

Section 33 T18N, R2E	Section 34 T18N, R2E
Section 4 T17N, R2E	Section 3 T17N, R2E

PHOTOGRAPHIC DOCUMENTATION

Date of photography: September 2008 & September 2009

Corner 2 as found, showing the pipe and metal posts to the south. The above ground portion of the wood post is lying on the adjacent ground.



Corner 2 being excavated, showing the pipe, metal posts to the south, the in ground portion of the wood post, and a rock found on the north side of the post, presumably a brace rock.



The top stone found at corner 1.



The lower stone found at corner 2 and the remains of the old wood post found adjacent to the two stones.



For details and documentation, refer to related sheet "Section Corner Record."

SECTION CORNER RECORD

BOONE COUNTY SURVEYOR'S OFFICE

SE 600-950

State Plane grid coordinates NAD83 (NSRS 2007):

North: 1715133.44 East: 3175509.98 (U.S. survey feet) (corner 1)

Type of monument: Harrison, 4" disk 'Section Corner' (corner 1)

Depth: 3 inches above adjacent grade in concrete pillar (corner 1)

Indiana tie card references:

IN02_T17NR2E03_04 IN02_T18NR2E34_76

The harrison monument was set in the position of a stone as reconstructed from deed calls and monuments to the north.

A BCS record of November 7-9, 1894 for the standard corner (section 34) states "Set Rock + 22.18.8 at corner, Set Rock + 7.12.10 under. B Sect. 3 East, 1.53 [chains]." A BCS record of the same date for the closing corner (section 3) states "Established from F Sect. 34 after finding same by running lines. Set Rock + 24.12.12 at corner. Set Rock + 6.18.12 under." (Huckstep)

An undated BCS record for the standard corner (section 34), which believed to be from June 16, 1898 states "Set rock + 10x14x24. Rock set by Huckstep S 80° E 20 1/2 lks." An associated BCS record which is dated June 16, 1898 for the closing corner (section 3) states "Set Rock 8x12x16 +. Rock set by Huckstep 20 1/2 lks E." (Fulwider)

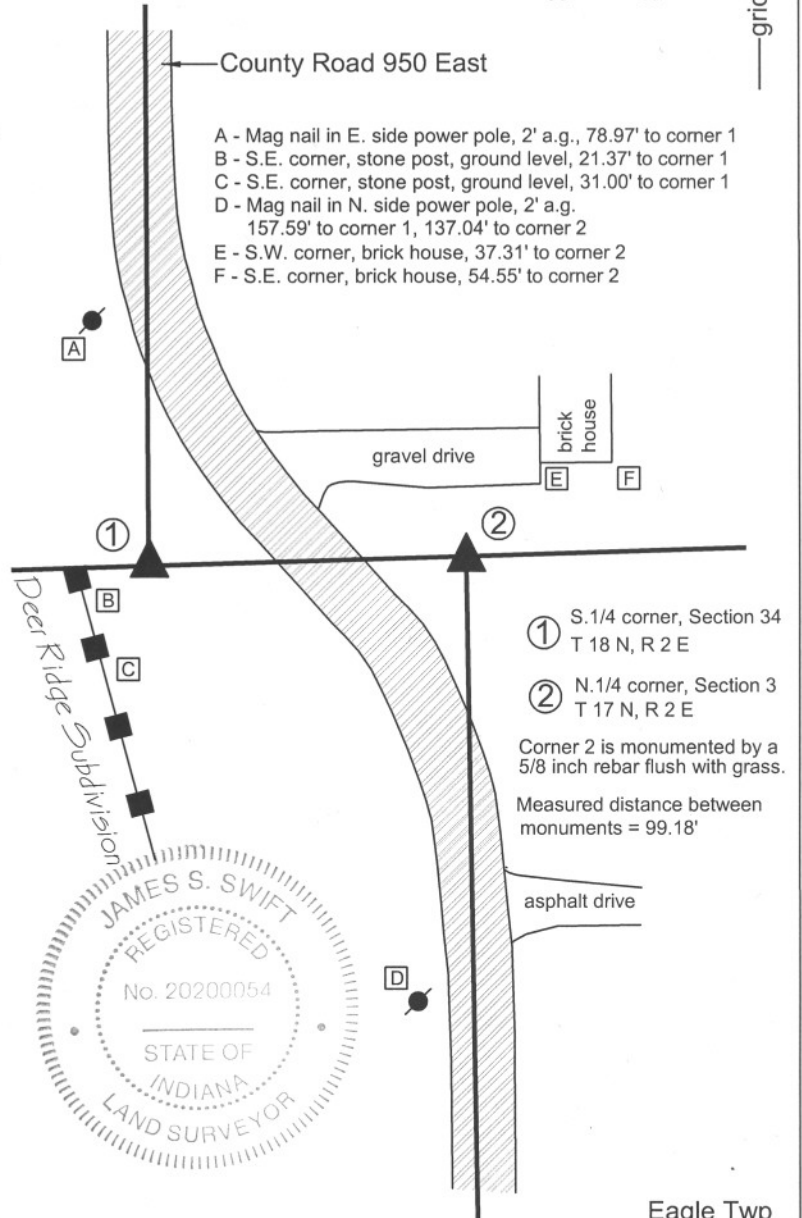
A BCS tie card for the closing corner dated 12/2/1968 states "3/4 inch pipe over stone." A tie card from an unidentified source, but which has been on file in this office, dated October 1, 1981, shows three stones found: the two Huckstep stones (standard and closing corners) and one of the Fulwider stones (standard corner only). The sketch demonstrates that the Huckstep stones fit with the roadway of County Road 950 East while the Fulwider stone is offset to the west. This tie card also shows the Huckstep stones as being 101.07 feet apart and notes that the "original notes" call for 100.98 feet, which is equal to 1.53 chains.

The area in the vicinity of the standard corner has been substantially disturbed by the installation of utilities. A rock found in the vicinity of the standard corner appeared to have been painted by a surveyor and had a wood lathe next to it but was significantly smaller than any of the record stones, was not emedded in the dirt and was easily moved. No other stones were found in the vicinity of the standard corner. The vicinity of the closing corner does not appear to have been disturbed but only one stone was found there, which was on the west side of the remnants of a cedar post and appeared to be a brace rock for the post. This stone did not match the dimensions of any of the record stones. A 5/8 inch rebar 2 feet south of this stone has been held as the corner for numerous surveys in the section 3 and also appears to have been held as the corner for the plat of Deer Ridge subdivision to the west. The Deer Ridge plat (Plat Book 7, page 41) shows both corners but does not identify the monument at either. Reconstructing the corners from the platted geometry based on P.K. nails found at the centers of the cul-de-sacs on Antler Court and White Tail Circle, the northeast corner of the subdivision fits precisely with the 5/8 inch rebar. The calculated position of the standard corner falls 1 foot east and 0.2 foot north of the aforementioned small rock.

The descriptions for properties to the north, including those found in Warranty Deeds recorded as Instruments 9710010 and 200700000615, call for a stone at the standard corner and railroad spikes on the line to the north. Three railroad spikes were found, all approximately 3 inches below the surface of the asphalt, the relative positions of which agree precisely with the deed calls. The position of the standard corner was calculated with respect to these monuments and the relevant deed calls. The calculated position agrees precisely with the position calculated from the Deer Ridge plat. No monument was found at this position and clear evidence of disruption was visible. A harrison monument was set at the calculated position. It is noted that the distance between the two corners is 1.8 feet less than that shown by Huckstep in 1894. It is also noted that the 5/8 inch rebar falls precisely along the line connecting the harrison monument set at the standard corner and a harrison monument set over a stone at the corner of sections 34 and 35, one half mile to the east. The standard corner was established as a wood post in 1819. The closing corner is not an original federal corner.

CORNER WITNESS DETAIL

SCALE 1" = 60'

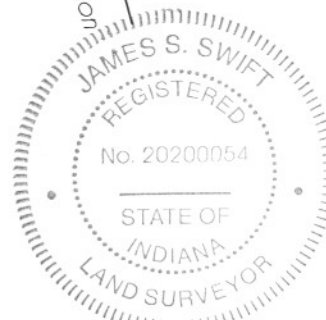


- A - Mag nail in E. side power pole, 2' a.g., 78.97' to corner 1
- B - S.E. corner, stone post, ground level, 21.37' to corner 1
- C - S.E. corner, stone post, ground level, 31.00' to corner 1
- D - Mag nail in N. side power pole, 2' a.g. 157.59' to corner 1, 137.04' to corner 2
- E - S.W. corner, brick house, 37.31' to corner 2
- F - S.E. corner, brick house, 54.55' to corner 2

① S.1/4 corner, Section 34
T 18 N, R 2 E

② N.1/4 corner, Section 3
T 17 N, R 2 E

Corner 2 is monumented by a 5/8 inch rebar flush with grass.
Measured distance between monuments = 99.18'



Kenneth E. Hedge
Kenneth E. Hedge, County Surveyor

James S. Swift
James S. Swift, IN LS 20200054

March 11, 2009

Eagle Twp



SECTION CORNER RECORD

SE 600-1000

BOONE COUNTY SURVEYOR'S OFFICE

State Plane grid coordinates NAD83 (NSRS 2007):

North: 1715214.92 East: 3178233.82 North: 1715215.92 East: 3178265.16 (U.S. survey feet)

Type & depth of monument:

Standard corner (West): Harrison, 4" disk 'Section Corner' one inch below adjacent road surface.

Closing corner (East): Harrison, 4" disk "Section Corner' flush with ground.

Indiana tie card references:

IN02_T17NR2E02_00 IN02_T17NR2E03_08
 IN02_T18NR2E34_80 IN02_T18NR2E35_72

The harrison monuments were both set over stones found. A BCS record of November 7,8,9, 1894 states "Reestablished from lap. Set Rock + 19.12.7 at corner. Set Rock + 9.20.12 under. Several small stones around. Corner section 2 + 3 East 48 [links]."

BCS field notes dated 12/2/1968 call for a stone at the standard corner (common to sections 34 and 35). However, the tie card made from these field notes was identified as being for the south quarter corner of section 34, 1/2 mile west, and the tie card has long been improperly referenced to the wrong corner. A BCS tie sheet dated June 15, 1989 calls for a stone at the closing corner (common to sections 2 and 3).

Many surveys in this vicinity call for the stone at the closing corner. This set of corners was originally excavated and the standard corner monumented on December 4, 2007, with final monumentation at the closing corner completed on December 11, 2008.

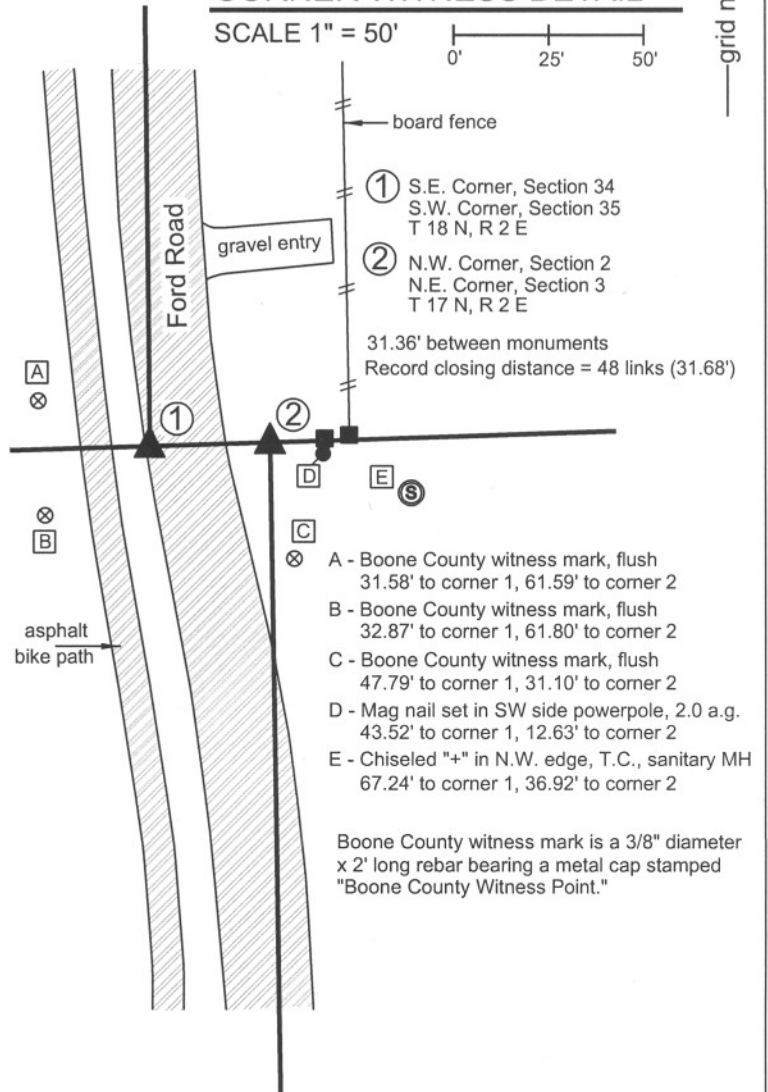
Prior to excavation a 5/8 inch rebar was visible in a hole in the asphalt in the vicinity of the standard corner and a harrison monument was visible at the surface of the ground in the vicinity of the closing corner. No documentation was found for the source of either of these monuments. Excavation revealed stones at both corners. The stone at the standard corner was found 2 feet deep, completely established in the clay and appears to be the record lower stone from 1894. Iron pipes were found on the east and south sides of this stone. The 5/8 inch rebar which had been the visible monument prior to excavation had been driven into the iron pipe on the east side of the stone. The harrison monument at the closing corner was set in a minimal amount of concrete and was easily removed. The stone at the closing corner was found approximately 10 inches deep 1.5 feet west of the harrison monument. The record federal offset distance (as well as record 1894 "lap") at this corner is 48 links or 31.68 feet. The top, centers of the two stones are 31.36 feet apart. The harrison monument at the standard corner was set over the top, center of the stone found. From December 4, 2007 to December 11, 2008, the stone at the closing corner was left visible within a piece of 12 inch smooth corner black storm pipe, set vertically. On December 11, 2008 a harrison monument was set over the top of this stone, on line between the harrison monuments at the southwest and south quarter corners of section 35. This monument was truncated at 8 inches and set in concrete within the vertical storm pipe over the stone. The top of the stone was encased in concrete. At 1 foot below the top of the stone, it measures 14 inches N-S by 12 inches E-W and is very stable, clearly extending deeper into the ground. A notch was cut out of the bottom of the north edge of the storm pipe to fit it over the stone.

These corners were originally established as wood posts in 1819 (standard) and 1821 (closing).

CORNER WITNESS DETAIL

SCALE 1" = 50'

0' 25' 50'



Boone County witness mark is a 3/8" diameter x 2' long rebar bearing a metal cap stamped "Boone County Witness Point."



Kenneth E. Hedge
 Kenneth E. Hedge, County Surveyor

James S. Swift
 James S. Swift, IN LS 20200054

March 11, 2009

Eagle Township

Section 34 T18N, R2E	Section 35 T18N, R2E
Section 3 T17N, R2E	Section 2 T17N, R2E

PHOTOGRAPHIC DOCUMENTATION

Date of photography: December 4, 2007 and December 11, 2008

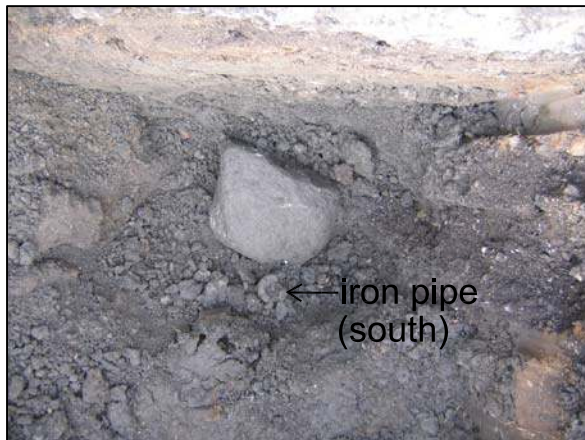
Photograph of the stone at the closing corner (east of Ford Road) and the Harrison monument. The Harrison is 1.5 feet east of the top, center of the stone. The Harrison monument was removed and a new Harrison set over the stone on December 11, 2008.



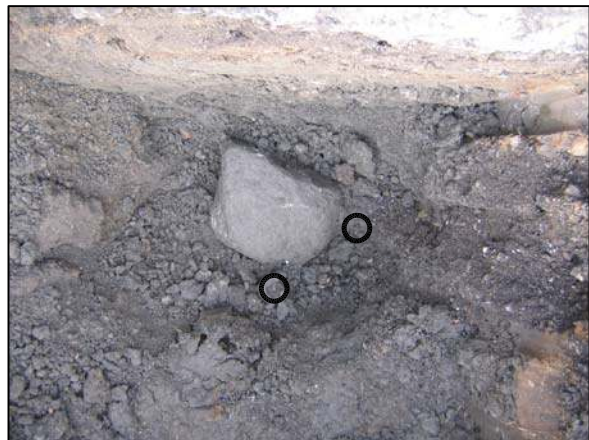
Close up of the closing corner stone with approximately 18 inches of the stone exposed.



Photograph of the record lower stone found at the standard corner (on the west edge of pavement, Ford Road). Note the iron pipe on the south edge of the stone. A similar iron pipe was found on the east edge of the stone, but removed prior to this photo. The iron pipe on the east edge of the stone had a 5/8 inch rebar driven into the center of it. The rebar was the visible monument prior to excavation.



The same photograph as the one that to the left, but with additional graphics highlighting the iron pipe on the south side of the stone and demonstrating the approximate position of the iron pipe which was previously on the east side of the stone.



SECTION CORNER RECORD

BOONE COUNTY SURVEYOR'S OFFICE

SE 650-900

State Plane grid coordinates NAD83 (CORS96):
North: 1712095.76 East: 3172990.96 (U.S. survey feet)

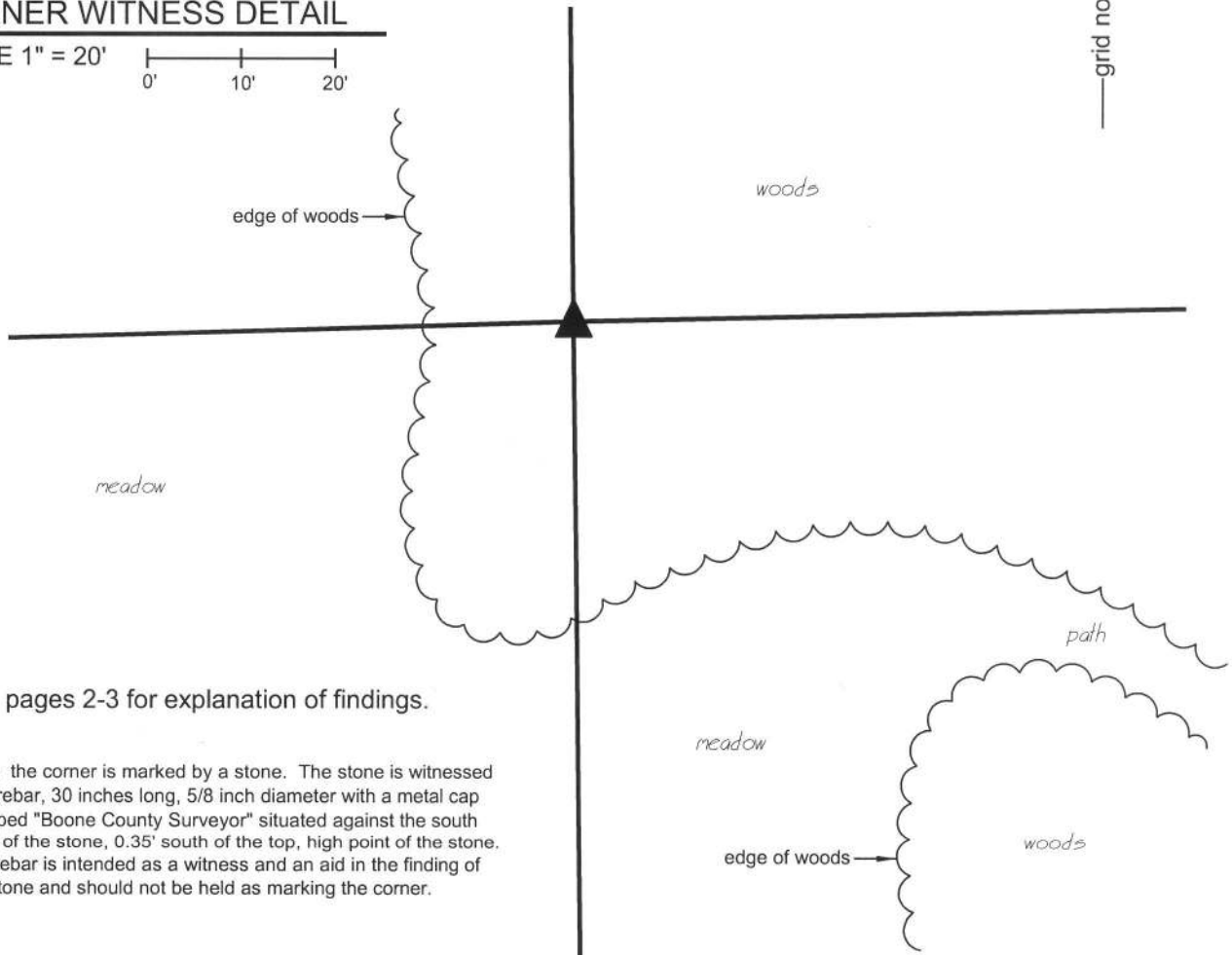
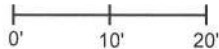
Type of monument: Stone, witnessed by capped rebar.
Depth: exposed but 2" below surrounding ground.

Indiana tie card references:
IN02_T17NR2E03_36
IN02_T17NR2E04_44



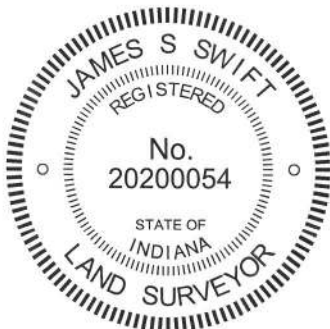
CORNER WITNESS DETAIL

SCALE 1" = 20'




See pages 2-3 for explanation of findings.

Note: the corner is marked by a stone. The stone is witnessed by a rebar, 30 inches long, 5/8 inch diameter with a metal cap stamped "Boone County Surveyor" situated against the south edge of the stone, 0.35' south of the top, high point of the stone. The rebar is intended as a witness and an aid in the finding of the stone and should not be held as marking the corner.

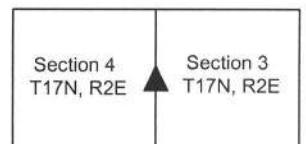



Kenneth E. Hedge, County Surveyor


James S. Swift, IN LS 20200054

February 5, 2015 Page 1 of 3

Eagle Township



SECTION CORNER RECORD

SE 650-900

BOONE COUNTY SURVEYOR'S OFFICE

This corner was originally established as a wood post between July 2 & July 5, 1821. Section 3, township 17 north, range 2 east was subdivided by the Boone County Surveyor in May 1836. During this survey the line between the subject corner and the northwest corner of section 3 was measured and the northwest corner of the south half of the northwest quarter was established. Section 4 was subdivided by the Boone County Surveyor in 1836 and 1842 and the subject corner is mentioned as a terminal point for measurements, though no monument was specifically described, in these records.

The 1939 aerial photos clearly show evidence of occupation along the lines bearing east, west and north from this corner. More recent photos show less clear evidence of occupation, as the woods in this area were allowed to grow and obscure the distinct patterns of occupation.

Several surveys of land which is not adjacent to this corner, but is tied to lines dependent upon the corner, were performed in the second half of the 20th century. The Spring Hills subdivision, subdividing a part of the southeast quarter of the northwest quarter of section 3 was platted in 1961. This plat shows the south line of the subdivision to be a portion of the south line of the northwest quarter, extending 910.72 feet east from the southwest corner of the S.E. $\frac{1}{4}$ of the N.W. $\frac{1}{4}$. The plat is signed by P.W. Moore, President of P.E. Middleton, Co., Inc. Engineers. The Thornhill Subdivisions in the east half of the southwest quarter of section 3 were platted in the late 1980s and early 1990s. Several of the plats of the various sections of the Thornhill Subdivision show diagrams of the section which clearly indicate that the north line of the east half of the southwest quarter was established per the line previously established by the Spring Hills Plat, showing a distance of 909.99 feet between a $\frac{3}{8}$ inch iron pin found at the S.W. corner of the S.E. $\frac{1}{4}$ of the N.W. $\frac{1}{4}$ and a $\frac{3}{8}$ inch iron pin found at the southeast corner of the Spring Hills Subdivisions. With respect to the west quarter corner of section 3 the diagrams specifically state "NO FENCES NOTHING FND. N.W. COR. S.W. $\frac{1}{4}$ SEC. 3-17-2 (CALCULATED) 5/8" REBAR SET." The diagrams indicate that the 909.99 foot line was extended west 1325.26 feet to a calculated corner. These diagrams also indicate that the north line of the west half of the southwest quarter is 15.64 feet shorter than the north line of the east half of the southwest quarter. These plats were signed by James E. Dankert, President of Paul I. Cripe, Inc. A 1992 survey by Jerry L. Carter, of Fink Roberts & Petrie, Inc, recorded in Survey Book 1, page 45 in the Boone County Recorders Office exactly replicates the diagrams from the Thornhill Subdivisions, including the reference to the rebar set. A 2005 survey by Mark Joseph Duffy of Weihe Engineers, Inc., recorded in Survey Book 9, page 13 holds the corner as established per the Thornhill Plats. This survey represents the preliminary boundary survey for the Oldfield Subdivision. A 2001 survey by Gary R. Kent of The Schneider Corporation, recorded in Survey Book 4, pages 52-56, holds a different position for the corner than the Thornhill Plats. This survey is of land in the east half of section 4 and represents the preliminary boundary survey to the Enclave Subdivision. The Kent survey established the subject corner at a proportional position relative to the northeast and southeast corners of section 4. This position falls approximately 10.3 feet north of the rebar set in association with the Thornhill Plats. No monument is shown as being set at the corner. The surveyor's report indicates that by holding this position, the location of a railroad spike at the southeast corner of the north half of the northeast quarter, section 4, fits within 0.9 of a foot with a proportional distance. The report later notes that the proportional distance was calculated proportional to the original acreage. The Kent survey holds a single straight line for the south line of the northwest quarter, from a railroad spike found at the accepted center of section 4 to the calculated proportional position for the east quarter corner. The survey shows the south line of the S.W. $\frac{1}{4}$, N.E. $\frac{1}{4}$ to be approximately 13 feet longer than the south line of the S.E. $\frac{1}{4}$, N.E. $\frac{1}{4}$ of section 4. It is noted that the survey shows that a fence near the north line of the S.W. $\frac{1}{4}$, N.E. $\frac{1}{4}$ diverges from the surveyed line. The fence is shown to fall along the surveyed line near the west end of the line but is shown as being up to 7 feet north of the line near the east end of the line. The survey shows that a $\frac{1}{2}$ inch iron pipe was found 7.0 feet north of the southeast corner, S.W. $\frac{1}{4}$, N.E. $\frac{1}{4}$ and a stone was found 7.5 feet north and 0.9 east of that corner.

It is noted that the recorded surveys and plats in both sections 3 and 4 hold the east-west distances for the half quarter sections per physical evidence rather than mathematical splits. However, in all cases, the surveys and plats hold straight east-west lines for the full half-mile lines and do not bend the lines at the quarter-quarter corners. Hence, the straight half mile line was held for direction although physical evidence, rather than mathematical splits, were held as controlling the distances along the lines.

Physical reconnaissance of the existing conditions in April 2013 yielded the following found evidence and observations. A 5/8 inch rebar was found at the position for the subject corner as shown on the Thornhill Plats. A concrete monument was found at the southeast corner of the Spring Hills plat, said monument shown as being set as part of Thornhill Section 1. A wood post at or near the northwest corner of Thornhill Section 1 and the southwest corner of Spring Hills was found at the easterly terminus of a short E-W fence. The post appears to have once had fencing to the south which is currently cut off. A 1/2 inch rebar was at the east edge of the post and several stones were found around the post. This post is near the position of the southwest corner of the S.E. $\frac{1}{4}$ of the N.W. $\frac{1}{4}$ shown on the Thornhill Plats, as computed relative to centerline control found on Mulsanne Drive. An old wood post with fence to the north and east was found approximately 458 feet east of the subject corner (W. $\frac{1}{4}$ corner, section 3). An old wood post with fence to the south and west and fencing cut-off to the north was found approximately 662 feet west of the subject corner. An old wood post with fence to the west and fencing cut-off to the north and south was found at the historically occupied S.W. corner of the E. $\frac{1}{2}$, N.E. $\frac{1}{4}$ of Section 4. An iron pipe is located at the southeast edge of this post. An old wood post with fence to the south, east and west was found approximately 160 feet west of said SW corner of the E. $\frac{1}{2}$, N.E. $\frac{1}{4}$ of Section 4, near the northeast corner of the Enclave Subdivision.


Kenneth E. Hedge, County Surveyor


James S. Swift, IN LS 20200054

SECTION CORNER RECORD

BOONE COUNTY SURVEYOR'S OFFICE

SE 650-900


It was observed that a distinct pattern exists with respect to the old fences providing evidence of the east-west lines in both sections 3 and 4. A calculated position was established by prolonging a line from the old post found near the northwest corner of the Thornhill subdivision through the post found 458 feet east of the subject corner to the same east-west position as the 5/8 inch rebar shown as marking the subject corner on the Thornhill plats. This calculated position fit very well with a line extended from the center of section 4 through the post found 662 feet west of the subject corner. Careful investigation of this calculated position yielded the observation that, although actual fencing is not currently present in this area, physical evidence of the corner is present. A distinct line of trees, all of which appear to be older than the surrounding trees can be found bearing east from this point. The trees, including a 20 inch Hackberry, 24 inch Hackberry and 5 walnuts of approximately 15 inches diameter, are located along a line extending approximately 150 east feet from the corner. Previous surveyors may not have noticed this line of trees due to significant underbrush and other, smaller trees in the area. Excavation in the immediate vicinity of this calculated position yielded the discovery of a stone which has several characteristics in common with stones found marking other section corners in this area. Fragments of wood which bear the distinct characteristics of the base of an old wood post were found adjacent to and immediately south of the stone. The stone itself measures 12 inches tall by 12 inches east-west by 9 inches north south and is upright with the south side being flat and vertical. The stone has a distinct high point at the top. Other rocks were not found in the vicinity. The stone is 20.8 feet north and 1.7 feet west of the 5/8 inch rebar noted on the Thornhill plats and approximately 10.5 feet north of the of proportional position for the corner as calculated on the Kent survey. The post at or near the S.W. corner of the E. 1/2, N.E. 1/4 of Section 4 falls 2 feet north of a straight line connecting the found stone and the monumented center of section 4.

It is noted that the two previously held positions for this corner were both based on the premise that no local evidence of the corner existed. The 1939 aerial photos clearly indicate that physical evidence of the corner did exist at that time. Careful analysis by this office yielded ample physical evidence to estimate a realistic position for the corner and excavation yielded a stone found at that estimated position. The stone fits the characteristics of corner stones found throughout the county and was found adjacent to evidence of the base of an old post. Analysis of the position of the stone relative to other corners and pertinent evidence yields the following observations: The stone fits well with the evidence of fences from the corner to 1/4 mile east and from the corner to 1/4 mile west. The stone is at the westerly end of the distinct line of trees, as noted above. The stone is 0.3 of a foot east of a straight line connecting the S.W. and N.W. corners of section 3, as previously established by this office. The previously determined proportional position for the corner, as based on the acreage shown on the original plat, established a position for the corner which is approximately 10 feet north of the rebar held by numerous surveys. This position does not fit with the physical evidence of the corner and dependent lines found in the field, though it does fit better with the physical evidence than does the position of the rebar. Given the presence of the physical evidence of the corner, a proportional solution is not considered the best solution for the corner. However, it is noted that there are two other mathematical solutions for the corner, one which is a proportional determination relative to the measurements shown on the original township plat and the other being a proportional determination relative to the direct measurements shown on the 1836 County Surveyor subdivision of section 3. Both actually work well with the relative positions of the stone found at the subject corner with the northwest and southwest corners of section 3 as previously established by this office and the position of a railroad spike in the center of Oak Street (formerly S.R. 334) which has been accepted on numerous surveys as marking the S.W. corner of the N. 1/2 of the N.W. 1/4 of section 3. Given the presence of the stone, the adjacent post, the physical evidence of the dependent lines and the harmonization of this position with the measurements made by the original federal surveyors and the County Surveyor soon thereafter, minimal uncertainty is attached to the position of the stone as representing the best available evidence of the corner. With respect to previous surveys, however, uncertainties of up to 10.5 feet must be attached to the position of the corner relative to the Kent survey and uncertainties of up to 21 feet must be attached to the position of the corner relative to the other known surveys and plats.

The stone was accepted as providing the best evidence of the corner and was held as marking the corner. A 5/8 inch rebar with a metal cap stamped 'Boone County Surveyor' was set at the south edge of the stone, 0.35 feet south of the high point of the stone. The rebar is intended as a witness monument and an aid to finding the stone and should not be construed as marking the corner. An orange fiberglass lathe was also set near the corner as a witness.

It is noted that the previously accepted position of the southwest corner of the east half of the northwest quarter of section 3, as shown on the plats of Spring Hills and Thornhill and marked or witnessed by an old wood post is 11 feet south of a straight line connecting the aforementioned stone and the position of the center of the section held on the Thornhill plats and is 10.3 feet south of a straight line connecting the stone and a railroad spike marking the east quarter corner of section 3. It is also noted that this point is 7.3 feet west of a calculated midpoint between the center of section 3, per the Thornhill plats, and the stone accepted herein as marking the west quarter corner. Given the substantial history of surveys tied to that corner, it is strongly recommended that future surveys hold the position shown on the Thornhill plats as marking the southwest corner of the east half of the northwest quarter of section 3 and treat the south line of said northwest quarter as containing a bend at this point.


Kenneth E. Hedge, County Surveyor


James S. Swift, IN LS 20200054

February 5, 2015 Page 3 of 3

PHOTOGRAPHIC DOCUMENTATION

Date of photography: April 15 & May 15, 2013

The tree line to the east of the corner (April 15).



The general area of the corner prior to excavation.



The found stone with fragments of wood which fit the character of those from an old post (4/15).



The stone, rebar and witness lathe on May 15.



The stone on May 15.



For details and documentation, refer to related sheet "Section Corner Record."

SECTION CORNER RECORD

SE 700-900

BOONE COUNTY SURVEYOR'S OFFICE

State Plane grid coordinates NAD83 (NSRS 2007):
North: 1709444.34 East: 3173021.29 (U.S. survey feet)

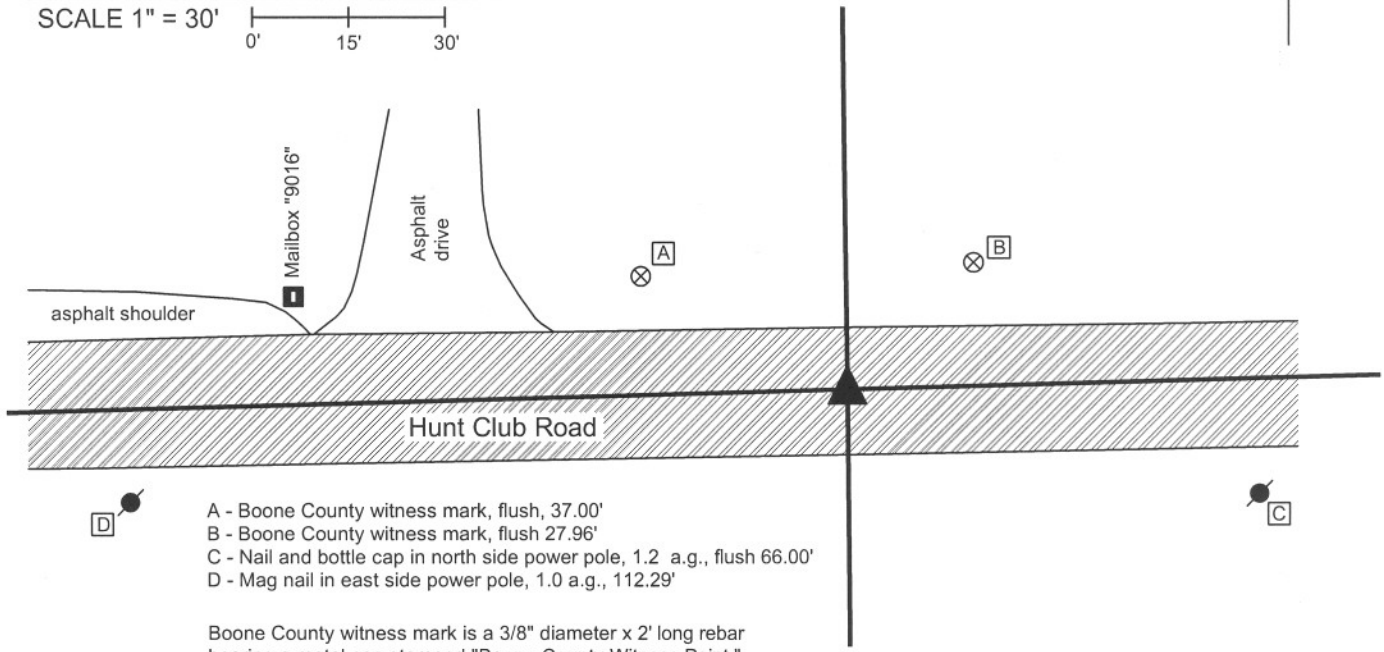
Type of monument: Harrison, 4" disk 'Section Corner'
Depth: 1" below road surface

Indiana tie card references:
IN02_T17NR2E03_72 IN02_T17NR2E04_80
IN02_T17NR2E09_08 IN02_T17NR2E10_00



CORNER WITNESS DETAIL

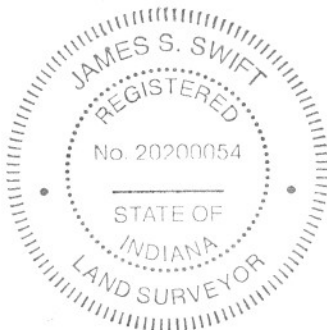
SCALE 1" = 30'
0' 15' 30'



- A - Boone County witness mark, flush, 37.00'
- B - Boone County witness mark, flush 27.96'
- C - Nail and bottle cap in north side power pole, 1.2' a.g., flush 66.00'
- D - Mag nail in east side power pole, 1.0 a.g., 112.29'

Boone County witness mark is a 3/8" diameter x 2' long rebar bearing a metal cap stamped "Boone County Witness Point."

The Harrison monument was set in place of a railroad rail found, the top of which was 4 inches below the surface of the road. A previous tie card indicates that the rail was set in place of a stone found, April 1970. A black igneous stone was found during excavation, approximately 1.8 feet deep and 1.2 feet south and west of the rail. It is not clear whether this is the same stone which was previously found and displaced by the rail or whether this is a different stone. No record prior to 1970 was found for a stone at this corner. A 1 inch diameter iron pipe with a nail driven in the top was found situated against the north side of the rail. The nail and top of the pipe were approximately 3 inches below the surface of the road and 0.1' north of the center of the top of the rail. Previous private surveys call for a mag nail, bolt and nail-in-pipe. The nail, pipe and rail were removed during excavation. This corner was originally established in July, 1821.



Kenneth E. Hedge
Kenneth E. Hedge, County Surveyor

J. S. Swift
James S. Swift, IN LS 20200054
December 21, 2007

Eagle Township

Section 4 T17N, R2E	Section 3 T17N, R2E
Section 9 T17N, R2E	Section 10 T17N, R2E

PHOTOGRAPHIC DOCUMENTATION

Date of photography: 11/09/2007

Photograph of iron pipe with nail in it and railroad rail. BCS records from April, 1970 state that a found stone was replaced with a railroad rail. The photograph is oriented with north towards the top of the page. The top of the iron pipe was 3 inches below the surface of the road and the top of the rail was 4 inches below the surface of the road. The Harrison monument was set in the position of the approximate center of mass of the top of the rail, being the approximate midpoint of the skinny section between the track and the base.



Black igneous stone found south and slightly west of the rail. This stone was found at 1.8 feet deep and was left in place. It is not known whether this is the same stone found and replaced with the rail in April 1970, or whether this is a different stone.

black igneous stone



SECTION CORNER RECORD

SE 700-950

BOONE COUNTY SURVEYOR'S OFFICE

State Plane grid coordinates NAD83 (NSRS 2007):

North: 1709515.28 East: 3175704.07 (U.S. survey feet)

Type of monument: Harrison, 4" disk 'Section Corner'

Depth: One inch below adjacent road surface

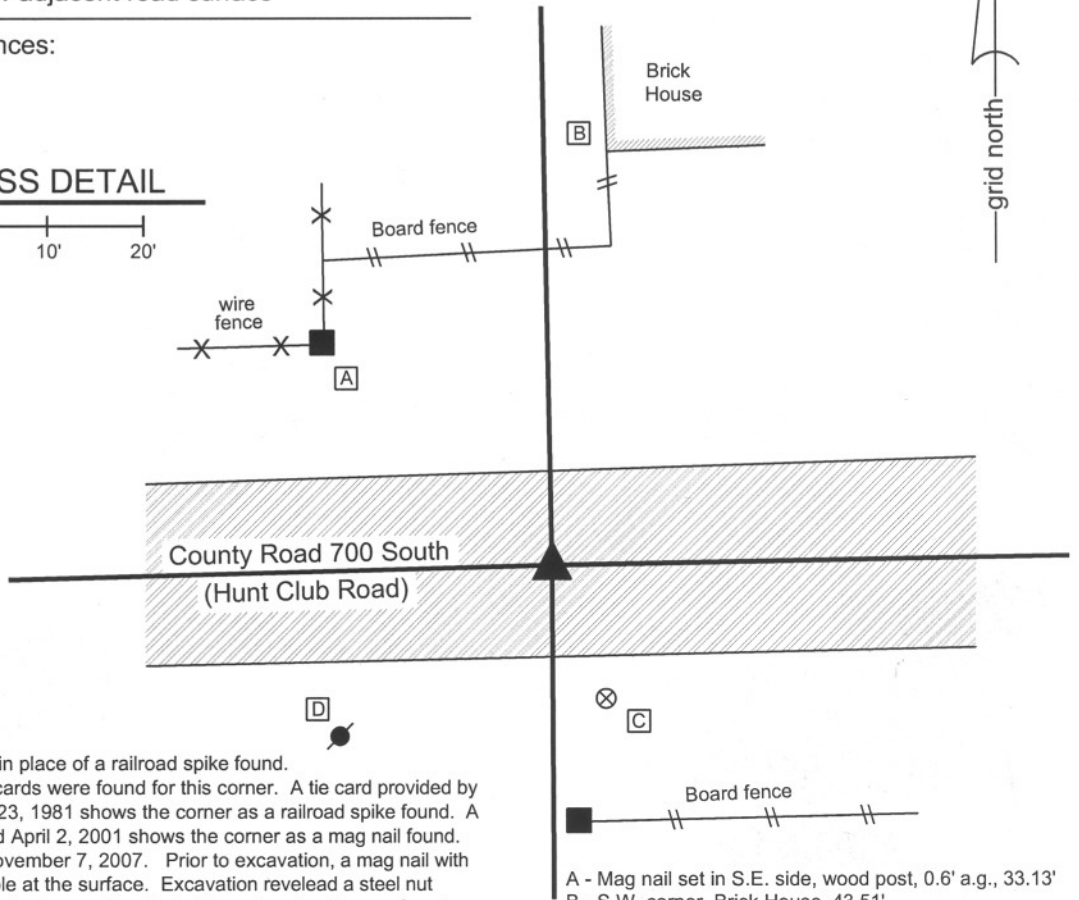
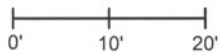
Indiana tie card references:

IN02_T17NR2E03_76

IN02_T17NR2E10_04

CORNER WITNESS DETAIL

SCALE 1" = 20'



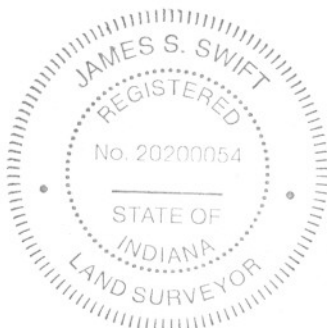
The harrison monument was set in place of a railroad spike found. No old BCS stone records or tie cards were found for this corner. A tie card provided by Paul I. Cripe, inc. dated January 23, 1981 shows the corner as a railroad spike found. A tie card provided by INDOT dated April 2, 2001 shows the corner as a mag nail found. This corner was excavated on November 7, 2007. Prior to excavation, a mag nail with a blank shiner (washer) was visible at the surface. Excavation revealed a steel nut below the mag nail, just below the top layer of asphalt. The railroad spike was found several inches deep approximately 0.3 foot South and 0.4 foot West of the mag nail and nut. The railroad spike did not register on a magnetic locator and appeared to have lost its magnetism. The steel nut did register on the locator. It is logical to conclude that a survey crew installed the mag nail at the point where their magnetic locator gave the strongest reading in the immediate vicinity of the corner. The mag nail appeared to be set directly in the asphalt surface of the road with no excavation. The railroad spike has been held for many private surveys in the area and is clearly better evidence of the corner than the steel nut, which appeared to be something dropped at random on the road and paved over. No stone or other monuments were found. This corner falls in a portion of road which passes through a ravine and the immediate vicinity of the corner appears to be in an area of cut transitioning into fill. The harrison monument was set in place of the railroad spike, which was removed.

This corner was originally established as a wood post in late June or early July, 1821.

- A - Mag nail set in S.E. side, wood post, 0.6' a.g., 33.13'
- B - S.W. corner, Brick House, 43.51'
- C - Boone County Witness Mark, flush, 14.99'
- D - Mag nail set in N.E. side power pole, 2.5' a.g., 27.58'

All tie dimensions are horizontal distance

Boone County witness mark is a 3/8" diameter x 2' long rebar bearing a metal cap stamped "Boone County Witness Point."

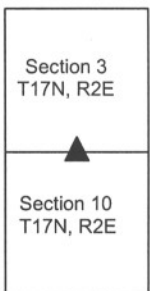


Kenneth E. Hedge
Kenneth E. Hedge, County Surveyor

James S. Swift
James S. Swift, IN LS 20200054

March 11, 2009

Eagle Twp



SECTION CORNER RECORD

SE 700-1000

BOONE COUNTY SURVEYOR'S OFFICE

State Plane grid coordinates NAD83 (NSRS 2007):

North: 1709561.12 East: 3178346.78 (U.S. survey feet)

Type of monument: Harrison, 4" disk 'Section Corner'

Depth: One inch below adjacent road surface

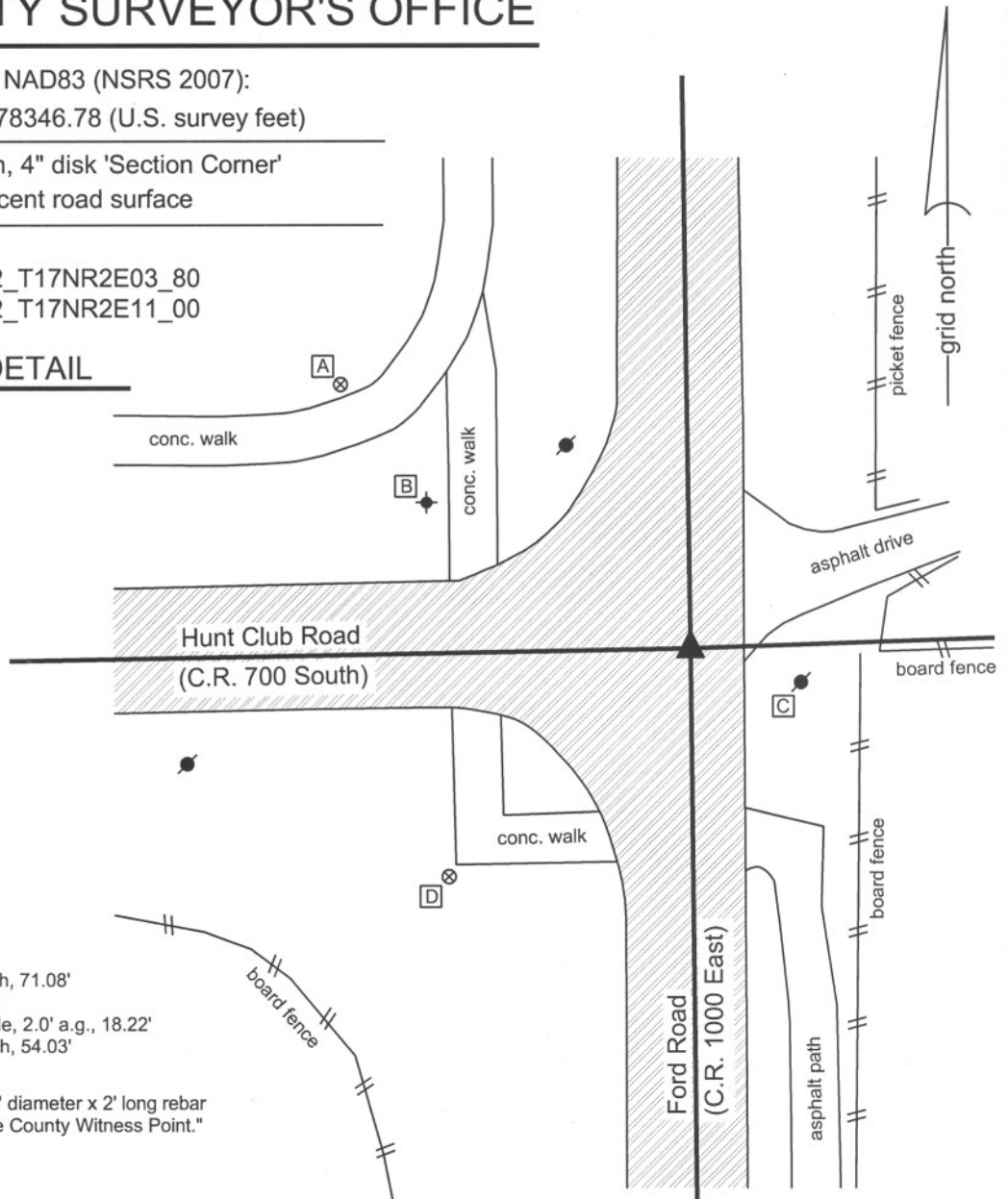
Indiana tie card references:

IN02_T17NR2E02_72 IN02_T17NR2E03_80

IN02_T17NR2E10_08 IN02_T17NR2E11_00

CORNER WITNESS DETAIL

SCALE 1" = 30'



- A - Boone County witness mark, flush, 71.08'
- B - Top SSE bolt, fire hydrant, 48.81'
- C - Mag nail set in W. side power pole, 2.0' a.g., 18.22'
- D - Boone County witness mark, flush, 54.03'

Boone County witness mark is a 3/8" diameter x 2' long rebar bearing a metal cap stamped "Boone County Witness Point."

The harrison monument was set over a railroad rail found and in place of a mag nail found and railroad spike found. No old BCS stone records were found for this corner. A BCS tie card of August 17, 1971 states "found 3' iron pipe, put in RRR." Most recorded surveys and the adjoining and proximate subdivision plats call for a railroad spike found. Some surveys reference a rebar found. Prior to excavation the visible monument was a mag nail at the surface. Excavation revealed the railroad spike, rebar and railroad rail. The railroad spike was found 8 inches deep, below the mag nail, 0.1 foot north and 0.1 foot east of the nail. The railroad rail was found at 14 inches deep, directly below the railroad spike. A 7 inch long rebar was also found, but was disturbed and its position was not firmly established. No other monuments were found in a 3 foot N-S by 3 foot E-W area centered on the mag nail. The railroad rail was left in place and a harrison monument was set directly over the rail in the position of the railroad spike. This corner was originally established as a wood post in late June or early July, 1821.



Kenneth E. Hedge
 Kenneth E. Hedge, County Surveyor

James S. Swift
 James S. Swift, IN LS 20200054

March 11, 2009

Eagle Township

Section 3 T17N, R2E	Section 2 T17N, R2E
Section 10 T17N, R2E	Section 11 T17N, R2E