

SECTION CORNER RECORD

BOONE COUNTY SURVEYOR'S OFFICE

SE 600-300

State Plane grid coordinates NAD83 (NSRS 2007):

Corner 1: North: 1714179.39 East: 3140761.91 (U.S. survey feet)

Corner 2: North: 1714180.84 East: 3140821.96 (U.S. survey feet)

CORNER WITNESS
DETAIL

SCALE 1" = 40'



Corner 1:

Type of monument: Harrison, 4" disk 'Section Corner'

Depth: flush with adjacent ground.

Corner 2:

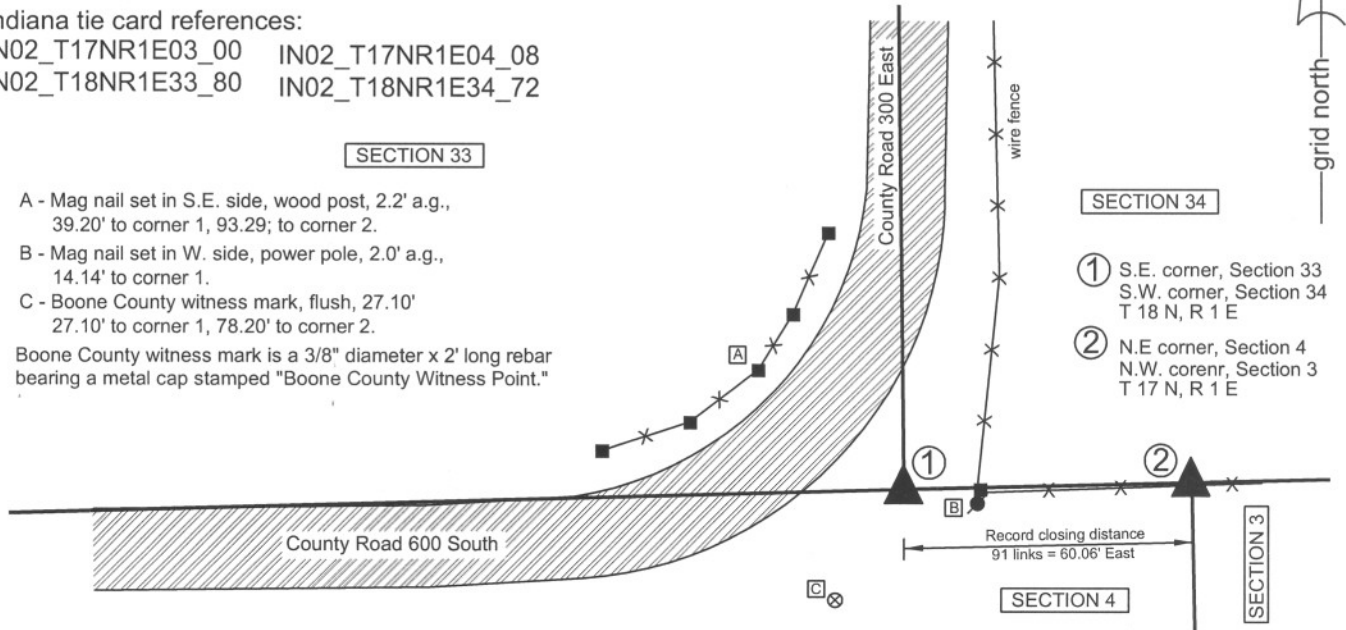
Type of monument: 5/8" rebar with metal cap stamped "Boone County Surveyor"

Depth: flush with adjacent ground.

Indiana tie card references:

IN02_T17NR1E03_00 IN02_T17NR1E04_08

IN02_T18NR1E33_80 IN02_T18NR1E34_72



A - Mag nail set in S.E. side, wood post, 2.2' a.g.,
39.20' to corner 1, 93.29; to corner 2.

B - Mag nail set in W. side, power pole, 2.0' a.g.,
14.14' to corner 1.

C - Boone County witness mark, flush, 27.10'
27.10' to corner 1, 78.20' to corner 2.

Boone County witness mark is a 3/8" diameter x 2' long rebar
bearing a metal cap stamped "Boone County Witness Point."

- SECTION 34
- ① S.E. corner, Section 33
S.W. corner, Section 34
T 18 N, R 1 E
 - ② N.E. corner, Section 4
N.W. corner, Section 3
T 17 N, R 1 E

The harrison monument at corner 1 was set in place of two stones found. The rebar at corner 2 was set in a calculated position. A BCS record of November 14, 1912 states with respect to corner 1 "Set rock corner between sec. 33 and 34. In line with rocks at f and F in sec. 34." No specific records were found for corner 2 beyond the original establishment of the corner in 1820. No BCS tie cards were found for either corner. Preliminary excavation occurred on May 22, 2008. Prior to excavation an iron pipe was found using a magnetic locator. The pipe was at the southerly prolongation of the approximate center of County Road 300 East and immediately west of a wood corner post to the east. It is noted that the wood corner post appears to be new, as does the section of fence attached to it to the east. The new section of fence blends into older fence approximately 300 feet east, at which point the fence is further north. Excavation revealed a stone approximately 1.9 feet north of the pipe. The stone is 24 inches E-W by 16 inches N-S by 8 inches thick. The letters "RT" are etched deeply into the top of the stone, with R to the west and T to the east. On May 22, the "RT" stone was left in place pending further research into the probable source of the letters. Research of the deed record uncovered two instances where the adjoining property owners had the respective names which begin with R (west, section 33) and T (east, section 34). In the early 1930s the property owners were Reed and Tague, while in the early 1940s the property owners were Ragan and Tyler. Tyler still owns land in section 34, though not the parcel immediately adjoining the corner. It is possible that the RT represents the initials of these property owners. On August 15, 2008 the RT stone was removed and another stone was found directly beneath it, being 14 inches deep, 13 inches E-W, 11 inches N-S and 8 inches thick. Local farmer Dan Tyler reports that the old fence to the east was built in the 1940s and that the position of the stones fit with the terminus of the old fence, now removed, which was slightly north of where the new fence is built. This observation fits with the fact that the old section of fence remaining further east is slightly north of the new fence. The two stones were accepted as the best evidence of the original location of corner 1 and the harrison monument was set in place of the stones, both of which were removed. No specific evidence was found for corner 2 and this corner was established on the township line at the original government closing distance of 91 links 60.06 feet. A 30 inch length of 5/8 inch diameter rebar bearing an aluminum cap stamped 'Boone County Surveyor' was set at this corner.

Corner 1 was originally established as a wood post in 1819 and corner 2 was originally established as a wood post in 1820.



Kenneth E. Hedge
Kenneth E. Hedge, County Surveyor

James S. Swift
James S. Swift, IN LS 20200054

March 11, 2009, revised July 25, 2011

Perry Township

Section 33 T18N, R1E	Section 34 T18N, R1E
Section 4 T17N, R1E	Section 3 T17N, R1E

SECTION CORNER RECORD

SE 600-400

BOONE COUNTY SURVEYOR'S OFFICE

State Plane grid coordinates NAD83 (NSRS 2007):

North: 1714302.84 East: 3146089.70 (U.S. survey feet) corner 1

North: 1714305.84 East: 3146215.06 (U.S. survey feet) corner 2

Type of monument: Harrison, 4" disk 'Section Corner' (corner 1 only)

Depth: 3 inches above adjacent ground.

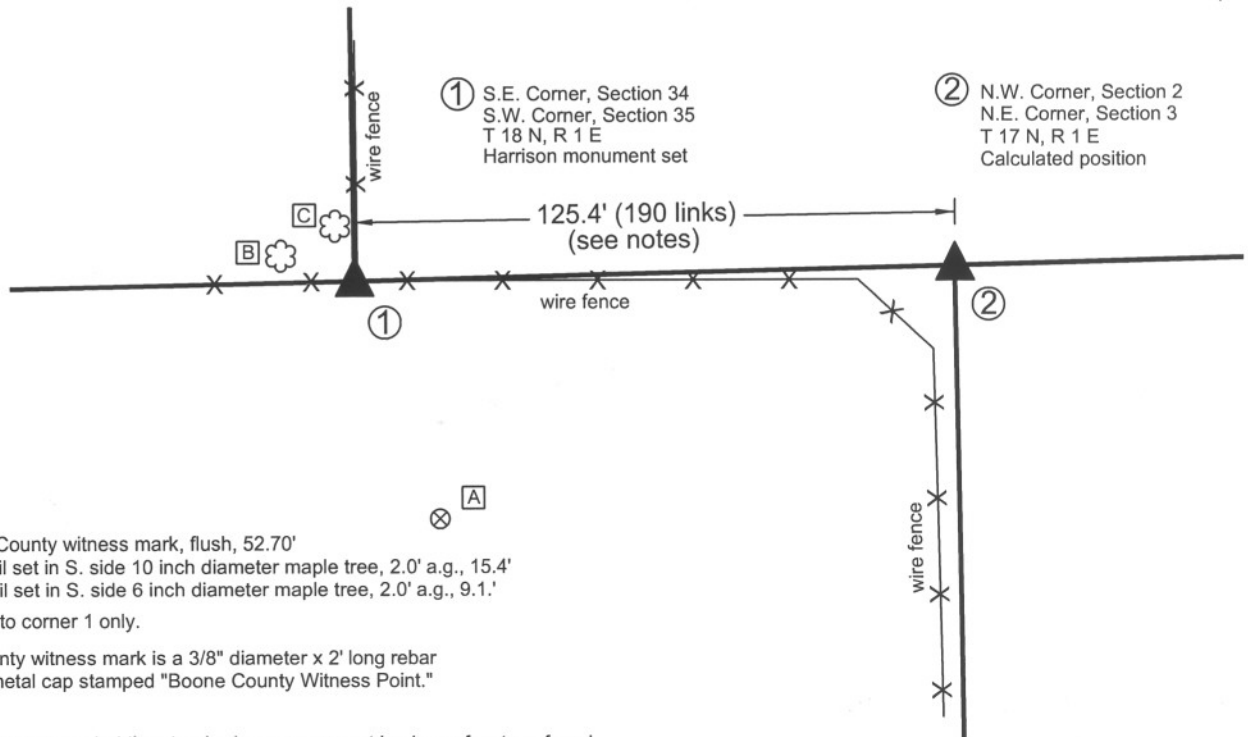
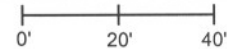
Indiana tie card references:

IN02_T17NR1E02_00 IN02_T17NR1E03_08

IN02_T18NR1E34_80 IN02_T18NR1E35_72

CORNER WITNESS DETAIL

SCALE 1" = 40'



- A - Boone County witness mark, flush, 52.70'
- B - Mag nail set in S. side 10 inch diameter maple tree, 2.0' a.g., 15.4'
- C - Mag nail set in S. side 6 inch diameter maple tree, 2.0' a.g., 9.1.'

All ties are to corner 1 only.

Boone County witness mark is a 3/8" diameter x 2' long rebar bearing a metal cap stamped "Boone County Witness Point."

The harrison monument at the standard corner was set in place of a stone found.

A BCS record of November 14, 1912 states "Re-Est. by measure & intersection. Set rock 17,12,11 +." No recent BCS tie cards were found referencing this corner. The record stone was found buried, with a small portion of the top of the rock exposed, under the E-W fence adjacent to and immediately west of an old corner post at the intersection of fence to the east, west and north. The stone was generally horizontal with a distinct top protruding slightly from the dirt. The stone was removed from its position and measured. The main stone measures the record dimensions of 17x12x11 inches. A small 2 inch protrusion causes a technical maximum dimension of 19 inches, but the main stone is clearly the record dimensions. No specific markings were found on the stone. The surface is quite rough and it is not as clear what might be intentional markings as on smoother surfaced stones. The stones were rolled to the north and the harrison monument was set in the position of the stone as originally found. The closing corner falls on the edge of a lake and no monument was set. The original government notes for this corner state that the corner is 99 links east of the standard corner. However, a record in the BCS Surveyor's Record dated December 2, 1889 states "Found lap as corners are established at 190 links instead of 99 as per Record of original." Establishing the closing corner at 190 links east causes the corner to fall approximately 4 feet east of the northerly prolongation of an old N-S fence. The coordinates shown above for the computed corner hold the 190 link distance, per the 1889 record.

The standard corner was originally established as a wood post in 1819 and the closing corner was established in 1820.



Kenneth E. Hedge
Kenneth E. Hedge, County Surveyor

James S. Swift
James S. Swift, IN LS 20200054
July 14, 2010

Perry Township

Section 34 T18N, R1E	Section 35 T18N, R1E
Section 3 T17N, R1E	Section 2 T17N, R1E

PHOTOGRAPHIC DOCUMENTATION

Date of photography: May 7, 2008 and November 3, 2009

The stone as found and exposed in 2008.



The stone and post in 2009.



The stone and post in 2009.



For details and documentation, refer to related sheet "Section Corner Record."

SECTION CORNER RECORD

SE 650-300

BOONE COUNTY SURVEYOR'S OFFICE

State Plane grid coordinates NAD83 (NSRS 2007):

North: 1711579.66 East: 3140876.80 (U.S. survey feet)

Type of monument: Harrison, 4" disk 'Section Corner'

Depth: 3 inches above adjacent ground.

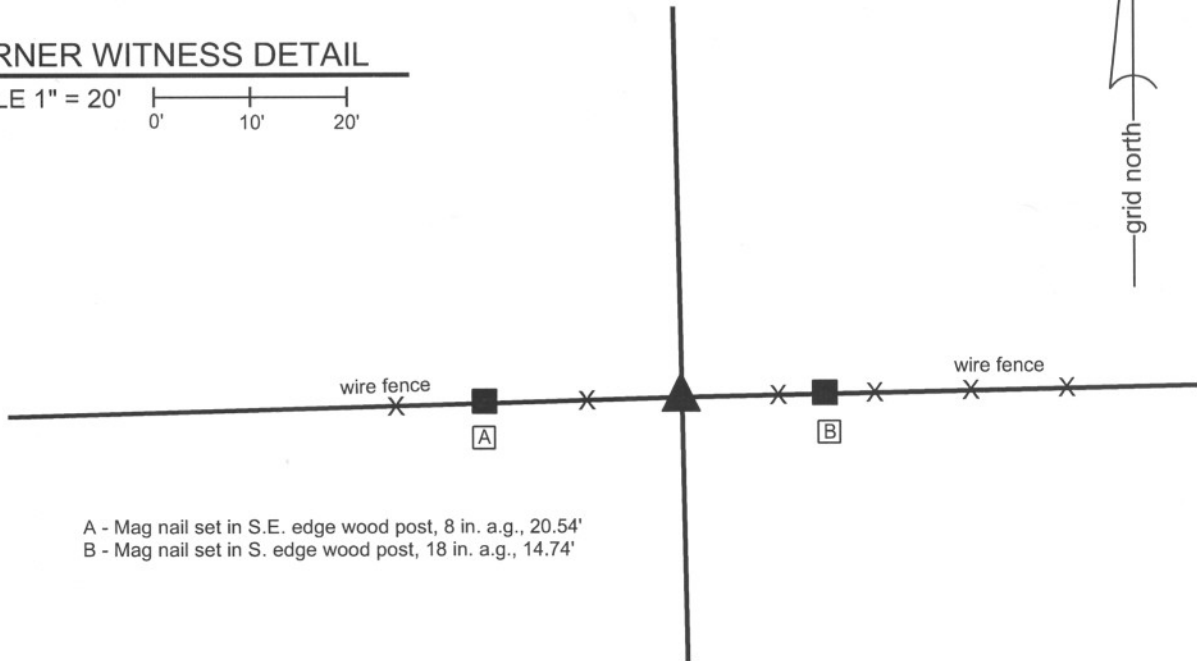
Indiana tie card references:

IN02_T17NR1E03_36

IN02_T17NR1E04_44

CORNER WITNESS DETAIL

SCALE 1" = 20'

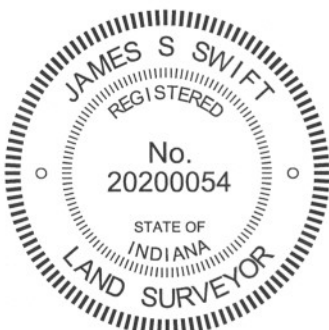


- A - Mag nail set in S.E. edge wood post, 8 in. a.g., 20.54'
- B - Mag nail set in S. edge wood post, 18 in. a.g., 14.74'

The harrison monument was set over the remnants of a wood corner post found.

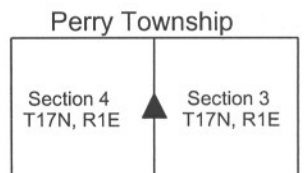
No specific descriptions of this corner were found in the BCS Surveyor's Record beyond the original establishment of the corner as a wood post in 1820. No recent BCS tie cards were found referencing this corner, nor were private recorded surveys.

This corner was excavated and monumented on October 4, 2010. Prior to excavation, no monumentation or specific evidence of the corner was visible, except the existing E-W fence. A probable location for the corner was computed with respect to other proximate corners and the evidence thereof, including the northeast, southeast and center quarter corner of section 4, the 1/16th corner 1/4 mile west of the subject corner, being at the intersection of County Roads 650 South and 275 East. Corner posts 1/8 mile and 1/4 mile, respectively, east of the subject corner were also employed. The uncertainty of the probable, calculated location of the corner was approximately 3 feet E-W. Excavation within this area yielded the discovery of the remnants of the base of an old post found at the south edge of the existing fence. Horizontal wood braces were found below the ground at the east edge of the post and fragments of old wire were found towards the north. Based on the evidence of the bracing and found fragments of wire, the post appeared to have been a corner post and its position fit well with surrounding, dependent corners. A railroad spike long accepted as marking the 1/16th corner at the intersection of C.R. 650 South and 275 East falls on line and approximately one foot east of the midpoint of a line connecting the post with a stone found and accepted as marking the center quarter corner of section 4. At a depth of 2 feet the remnants of the post are quite solid and the post was determined at this depth to have been a 7 inch by 7 inch square post. The post was held as marking the corner. The remnants of the post below 2 feet deep were left in the ground and the harrison monument was set directly over the remnants of the base of the post.



Kenneth E. Hedge
Kenneth E. Hedge, County Surveyor

James S. Swift
James S. Swift, IN LS 20200054
March 30, 2012



SECTION CORNER RECORD

SE 650-400

BOONE COUNTY SURVEYOR'S OFFICE

State Plane grid coordinates NAD83 (NSRS 2007):
North: 1711639.58 East: 3146257.42 (U.S. survey feet)

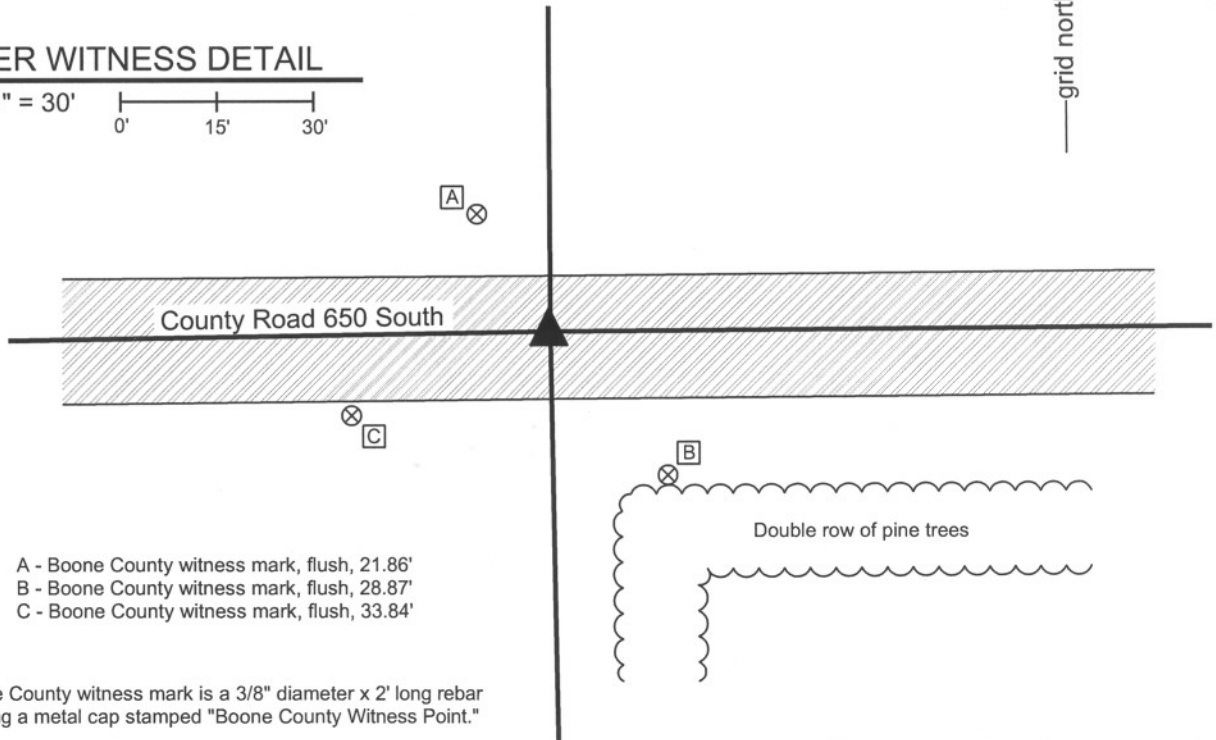
Type of monument: Harrison, 4" disk 'Section Corner'
Depth: One inch below adjacent road surface

Indiana tie card references:
IN02_T17NR1E02_44
IN02_T17NR1E03_36



CORNER WITNESS DETAIL

SCALE 1" = 30'
0' 15' 30'



- A - Boone County witness mark, flush, 21.86'
- B - Boone County witness mark, flush, 28.87'
- C - Boone County witness mark, flush, 33.84'

Boone County witness mark is a 3/8" diameter x 2' long rebar bearing a metal cap stamped "Boone County Witness Point."

The harrison monument was set in place of a P.K. nail and railroad rail found. A BCS record of January 11, 1869 states "Found from Beech stump." A BCS record of March 16, 1874 states "Reestablished from stump of SW Beech. Set a Rock 12,21,6 to 7 + on top and side." No BCS tie cards were found for this corner. However, field notes from April 20, 1970 state "No stone, found iron rod. Set RRR." This corner was excavated on October 27, 2008. Prior to excavation, a P.K. nail was visible at the surface. An area 4 feet N-S by 5 feet E-W was excavated to the clay layer below the road. A railroad spike was found below and slightly west of the P.K. nail. A railroad rail was found at 13 inches deep, below the P.K. nail. No stone was found. As the record stone was not found, the P.K. nail and rail were accepted as the best evidence of the corner and the harrison monument was set in the position of the P.K. nail and railroad rail, both of which were removed during excavation. This corner was originally established as a wood post in June, 1820.

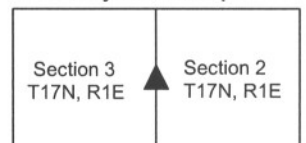


Kenneth E. Hedge
Kenneth E. Hedge, County Surveyor

James S. Swift
James S. Swift, IN LS 20200054

March 11, 2009 Revised July 14, 2010

Perry Township



SECTION CORNER RECORD

SE 700-300

BOONE COUNTY SURVEYOR'S OFFICE

State Plane grid coordinates NAD83 (NSRS 2007):

North: 1708925.87 East: 3140924.57 (U.S. survey feet)

Type of monument: Harrison, 4" disk 'Section Corner'

Depth: One inch below adjacent road surface

Indiana tie card references:

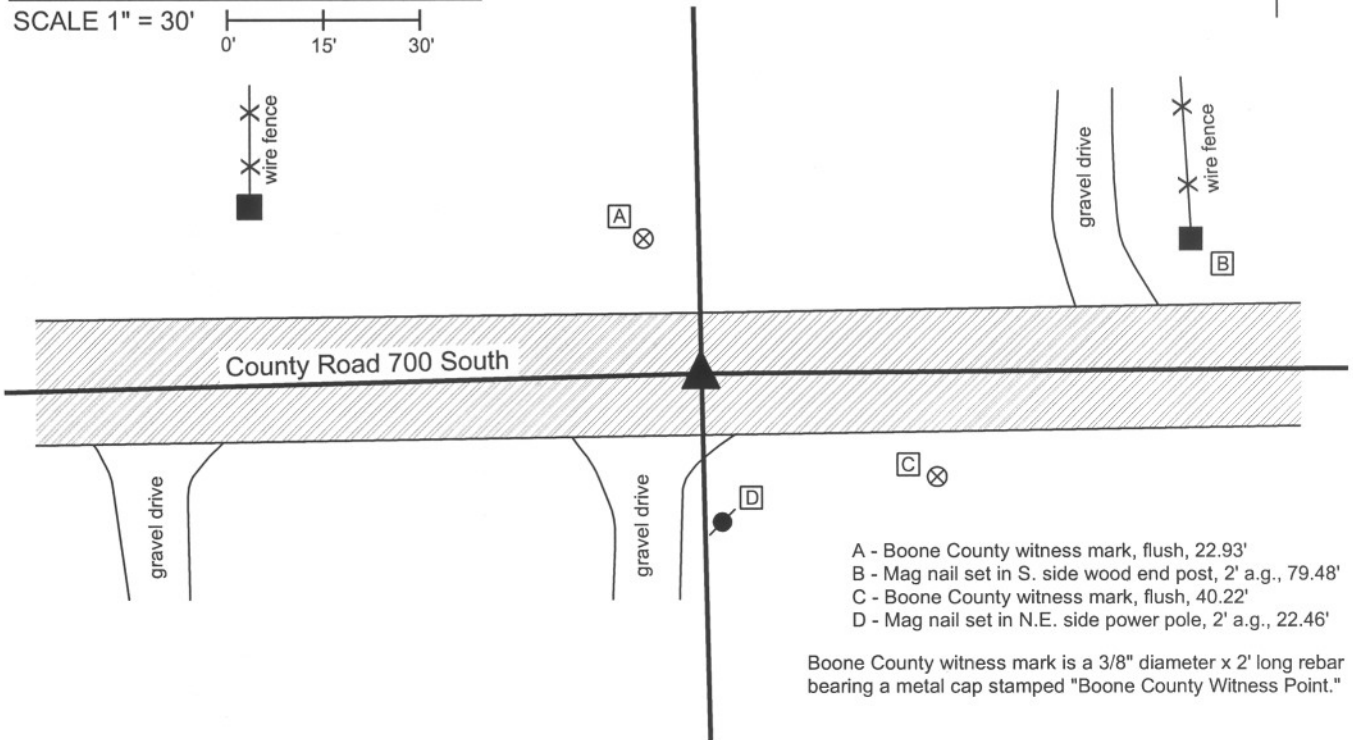
IN02_T17NR1E03_72 IN02_T17NR1E04_80

IN02_T17NR1E09_08 IN02_T17NR1E10_00



CORNER WITNESS DETAIL

SCALE 1" = 30'
0' 15' 30'



- A - Boone County witness mark, flush, 22.93'
- B - Mag nail set in S. side wood end post, 2' a.g., 79.48'
- C - Boone County witness mark, flush, 40.22'
- D - Mag nail set in N.E. side power pole, 2' a.g., 22.46'

Boone County witness mark is a 3/8" diameter x 2' long rebar bearing a metal cap stamped "Boone County Witness Point."

The harrison monument was set over the top of a stone found.

A BCS record of March 19, 1872 states "Found from roots of Beech. Drove no stake." A BCS record of March 29, 1898 states "Set rock. 7x13x24 +. Two small rocks beneath." No BCS tie cards were found for this corner. Excavation occurred on November 19, 2008. Prior to excavation, a 1/2 inch rebar was visible at the surface. An area approximately 3 feet N-S by 9 feet E-W appeared to have been excavated previously. The rebar was at the west edge of that area. Excavation revealed a wood hub at 5 inches deep approximately 1.5 feet west of the rebar. Excavation also revealed the record stone found at 21 inches deep. The stone is fully embedded in the clay layer beneath the road and measures 7 inches N-S by 13 inches E-W by 24 inches vertical. One small rock was exposed underneath the rock at the east edge of the record stone. The harrison monument was set directly over the top, high point of the record stone, which point is approximately 4 inches west of the east edge of the stone. The harrison monument is 1.3 feet South and 2.2 feet west of the position of the 1/2 inch rebar, which was removed during excavation.

This corner was originally established as a wood post in June, 1820.



Kenneth E. Hedge
Kenneth E. Hedge, County Surveyor

James S. Swift

James S. Swift, IN LS 20200054

March 11, 2009 revised July 14, 2010

Perry Township

Section 4 T17N, R1E	Section 3 T17N, R1E
Section 9 T17N, R1E	Section 10 T17N, R1E

PHOTOGRAPHIC DOCUMENTATION

Date of photography: November 19, 2008

Corner stone.
View from east with stone partially exposed.



Corner stone. View from east of fully exposed stone and County Road 700 South to the west.



Corner stone. View from above.



For details and documentation, refer to related sheet "Section Corner Record."

SECTION CORNER RECORD

SE 700-350

BOONE COUNTY SURVEYOR'S OFFICE

State Plane grid coordinates NAD83 (NSRS 2007):
North: 1708946.06 East: 3143583.11 (U.S. survey feet)

Type of monument: Harrison, 4" disk 'Section Corner'
Depth: One inch below adjacent road surface

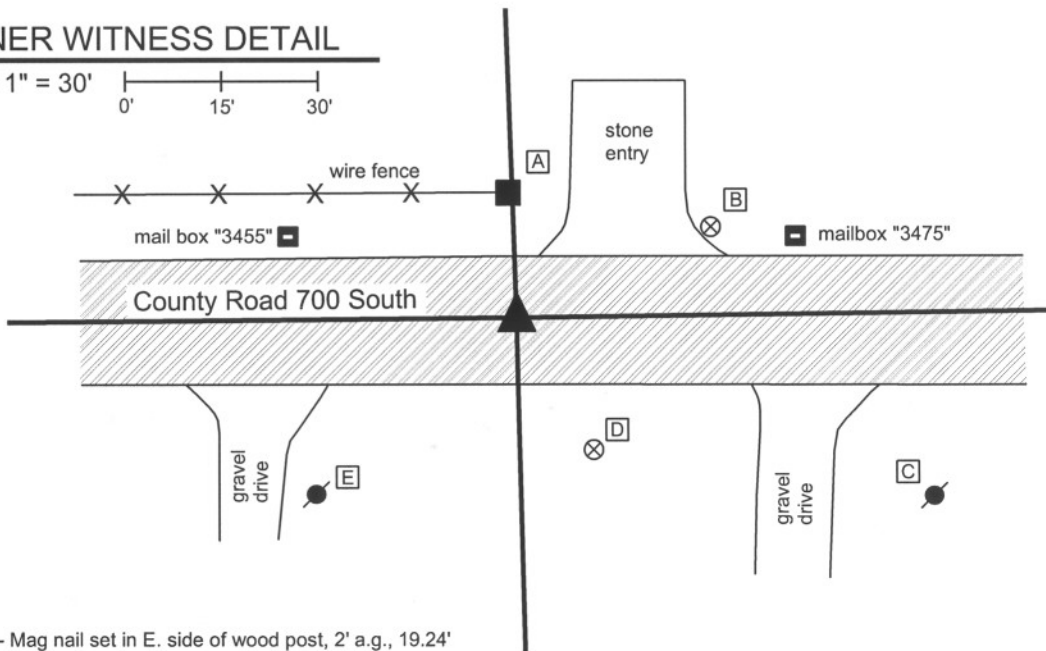
Indiana tie card references:
IN02_T17NR1E03_76
IN02_T17NR1E10_04



CORNER WITNESS DETAIL

SCALE 1" = 30'

0' 15' 30'



- A - Mag nail set in E. side of wood post, 2' a.g., 19.24'
- B - Boone County witness mark, flush 33.75'
- C - Mag nail set in N.W. side power pole, 2' a.g., 69.78'
- D - Boone County Witness Mark, flush, 23.80'
- E - Mag nail set in N.E. side, power pole, 2' a.g., 40.23'

Boone County witness mark is a 3/8" diameter x 2' long rebar bearing a metal cap stamped "Boone County Witness Point."

The harrison monument was set in place of a railroad rail found. A BCS record of March 29, 1898 states "Set Rock. 12x18x18. Three small rocks beneath." A BCS tie card of February 15, 1968 shows a triangle at the corner with no further information. However, the field notes associated with that tie card state "stone located by G. Jones, Feb 15, 1968. RR rail set by Harold." This corner was excavated on November 19, 2008. Prior to excavation, a railroad rail was visible at 9 inches deep in a hole in the asphalt. Excavation revealed no further monuments. It is likely that the stone was removed and the railroad rail set in its place, as was a common practice by field crews from this office in that time frame. The harrison monument was set in place of the railroad rail, which was removed during excavation. This corner was originally established as a wood post in June, 1820.



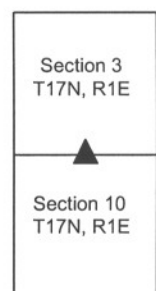
Kenneth E. Hedge
Kenneth E. Hedge, County Surveyor

James S. Swift

James S. Swift, IN LS 20200054

March 11, 2009 Revised July 14, 2010

Perry Township



SECTION CORNER RECORD

SE 700-400

BOONE COUNTY SURVEYOR'S OFFICE

State Plane grid coordinates NAD83 (NSRS 2007):
North: 1708980.17 East: 3146305.02 (U.S. survey feet)

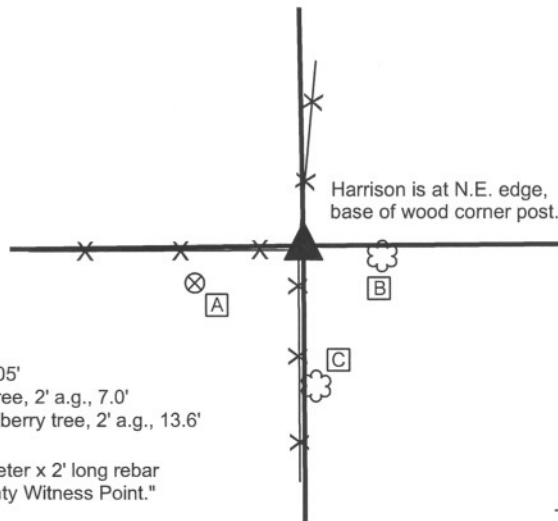
Type of monument: Harrison, 4" disk 'Section Corner'
Depth: Flush with adjoining grade

Indiana tie card references:
IN02_T17NR1E02_72 IN02_T17NR1E03_80
IN02_T17NR1E10_08 IN02_T17NR1E11_00



CORNER WITNESS DETAIL

SCALE 1" = 20'
0' 10' 20'

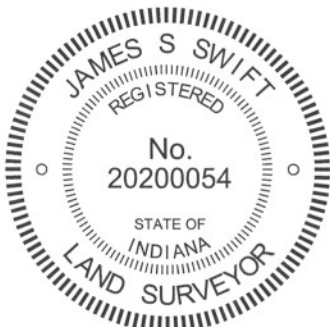


- A - Boone County witness mark, flush, 12.05'
- B - Mag nail set in W. side, 8 inch walnut tree, 2' a.g., 7.0'
- C - Mag nail set in N.W. side, 12 inch hackberry tree, 2' a.g., 13.6'

Boone County witness mark is a 3/8" diameter x 2' long rebar bearing a metal cap stamped "Boone County Witness Point."

X X X
- denotes wire fence

The harrison monument was set in place of three stones found stacked on top of each other. This corner is not specifically identified the old BCS stone records. It is referenced in measurement records within the BCS stone record with references in 1836, 1866 and 1894. No BCS tie cards were found for this corner. The stones found are at the east edge of the old wood corner post at the intersection of fences to the north, south and west. The top stone is generally of a square shape and was found oriented in cardinal directions. The top of the stone was slightly below the surface of the ground, being at the level of the roots of the grass. The second stone was directly beneath the top stone and the third stone was found directly below the second. The stones did not appear to have the characteristics of brace rocks and did appear to have been intentionally set in a column. The stones were all removed and the harrison monument was set in their place. This corner was originally established as a wood post in June, 1820.



Kenneth E. Hedge
Kenneth E. Hedge, County Surveyor

James S. Swift
James S. Swift, IN LS 20200054
February 27, 2009 Revised July 25, 2011

