

SECTION CORNER RECORD

NE 500-1000

BOONE COUNTY SURVEYOR'S OFFICE

State Plane grid coordinates NAD83 (CORS96):

North: 1773132.78 East: 3177418.10 (U.S. survey feet)

Type of monument: Harrison, 4" disk 'Section Corner'

Depth: One inch below adjacent road surface

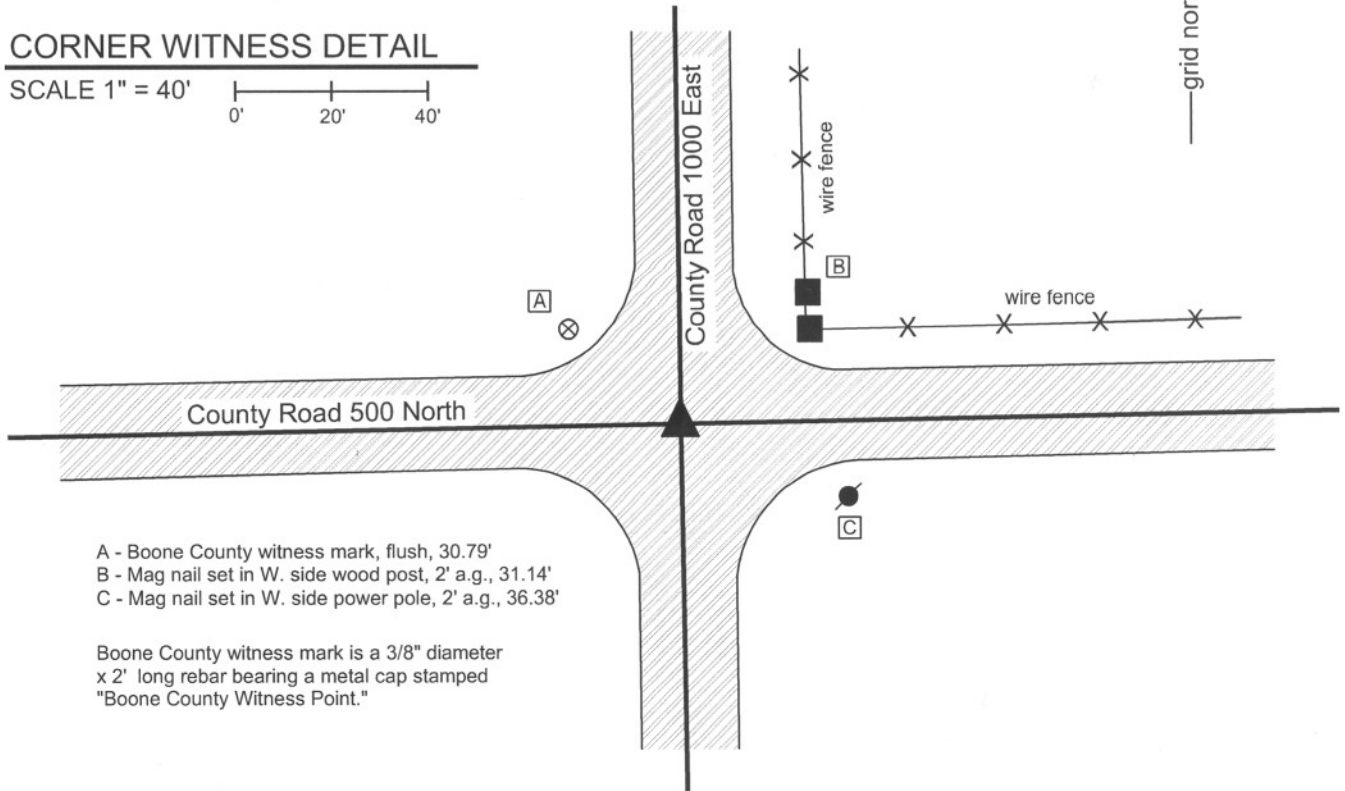
Indiana tie card references:

IN02_T19NR2E03_80 IN02_T19NR2E02_72

IN02_T19NR2E10_08 IN02_T19NR2E11_00

CORNER WITNESS DETAIL

SCALE 1" = 40'



- A - Boone County witness mark, flush, 30.79'
- B - Mag nail set in W. side wood post, 2' a.g., 31.14'
- C - Mag nail set in W. side power pole, 2' a.g., 36.38'

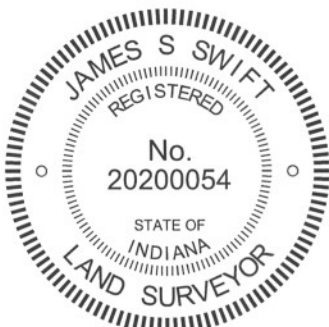
Boone County witness mark is a 3/8" diameter x 2' long rebar bearing a metal cap stamped "Boone County Witness Point."

The harrison monument was set over a stone found.

A BCS record of April 7, 1882 states "Cor. stone marked +." Field notes dated June 1970, for which no tie card was found, state "Set rail." A BCS tie card dated June 19, 1974 states "Found Rail."

This corner was excavated on April 12, 2011. Prior to excavation, a PK nail was found 4 inches deep in a hole in the asphalt. Excavation revealed a vertical section of railroad rail found at 7 inches deep, directly below the PK nail. Further excavation revealed a stone found at 20 inches deep. With 11 inches of the top exposed, the stone measures 10 inches N-S by 6 inches E-W. The full height of the stone was not measured but it is clearly larger, remaining entirely stable in the clay with 10 inches exposed. The stone is embedded in the clay layer below the road protruding 2 inches out of the clay into the bottom of the road bed. The west side of the stone is flat and vertical. No specific marking were identified. The stone has a distinct top, high point which was held as the specific position of the corner. The harrison monument was set over the top high, point. The PK nail and railroad rail, both removed during excavation, had been 2.1 feet west and 1.6 feet north of the corner.

This corner was originally established as a wood post in July, 1821.



Kenneth E. Hedge
 Kenneth E. Hedge, County Surveyor

James S. Swift
 James S. Swift, IN LS 20200054
 March 1, 2012

Marion Township

Section 3 T19N, R2E	Section 2 T19N, R2E
Section 10 T19N, R2E	Section 11 T19N, R2E

PHOTOGRAPHIC DOCUMENTATION

Date of photography: April 12, 2011

View of the stone as first exposed.



View of the stone from the north.



View from the north, looking across the stone and south along County Road 1000 East.



View of the stone from above and east.



For details and documentation, refer to related sheet "Section Corner Record."

SECTION CORNER RECORD

NE 500-1050

BOONE COUNTY SURVEYOR'S OFFICE

State Plane grid coordinates NAD83 (CORS96):

North: 1773181.78 East: 3180085.62 (U.S. survey feet)

Type of monument: Harrison, 4" disk 'Section Corner'

Depth: One inch below adjacent road surface

Indiana tie card references:

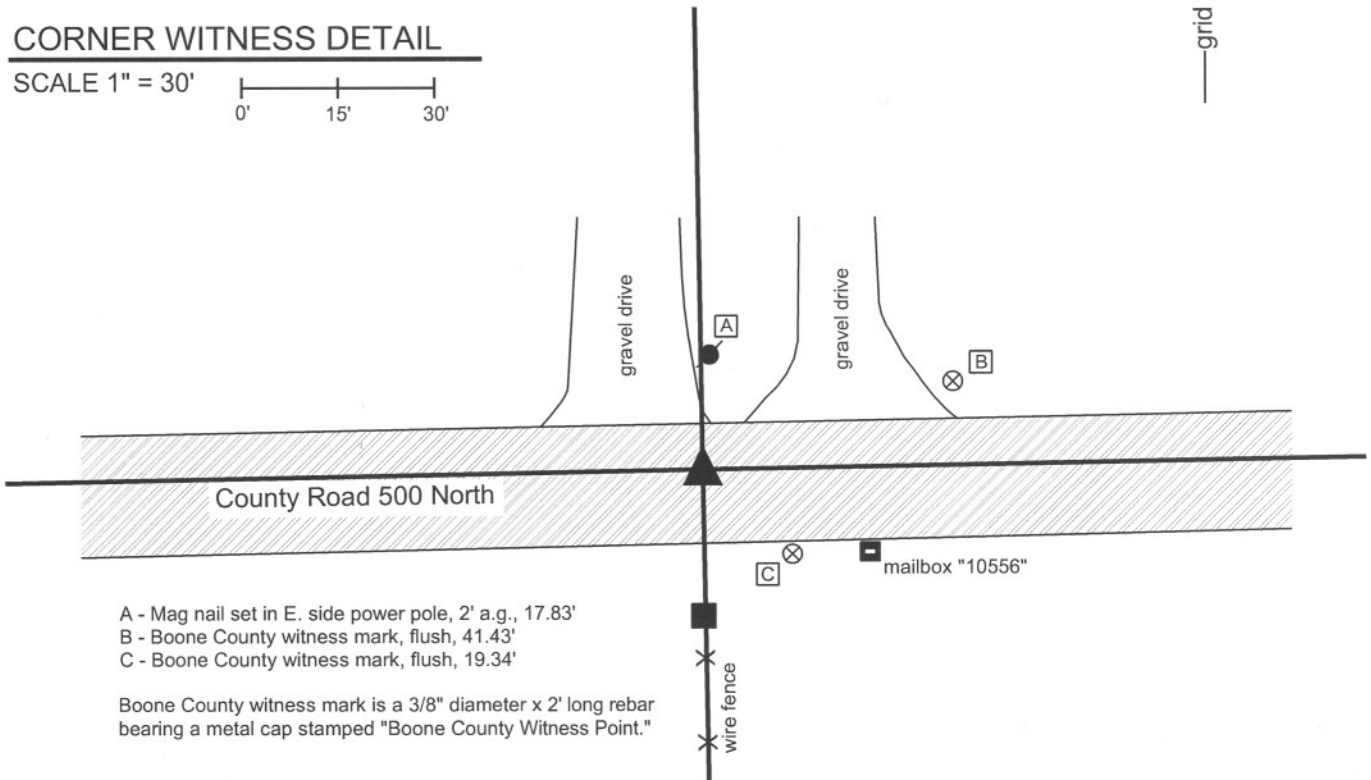
IN02_T19NR2E02_76

IN02_T19NR2E11_04



CORNER WITNESS DETAIL

SCALE 1" = 30'



- A - Mag nail set in E. side power pole, 2' a.g., 17.83'
- B - Boone County witness mark, flush, 41.43'
- C - Boone County witness mark, flush, 19.34'

Boone County witness mark is a 3/8" diameter x 2' long rebar bearing a metal cap stamped "Boone County Witness Point."

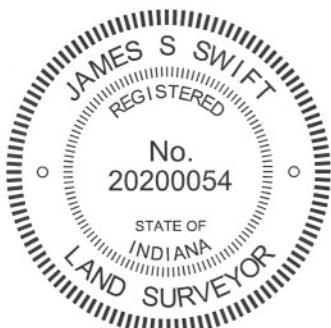
The Harrison monument was set in place of a vertical section of railroad rail found.

A BCS record of August 16-17, 1871 states "Set two Rocks. One 8.7.4 +. Top one (ugly) 17.10.6 +." BCS field notes dated June, 1970, for which no tie card was found, state "found stone replaced with rail." A BCS tie card dated June 19, 1974 states "Found Stone & Rail."

This corner was excavated on September 23, 2011. Prior to excavation a railroad rail was found at 6 inches deep in a hole in the asphalt. Excavation revealed no further evidence of the corner. The clay layer below the road begins at 15 inches deep. Excavation was performed to a minimum of 20 inches and probing was performed in the vicinity of the rail to an additional 18 inches. The 1970 field notes specifically state that the found stone was replaced with a rail. These notes do not mention two stones, per the 1871 record. The 1974 tie card states that a stone and rail were both found. Only the rail was found during excavation and no explanation is offered for this discrepancy.

The rail was removed during excavation and it was replaced with a Harrison monument in the same position.

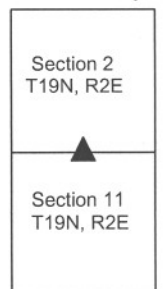
This corner was originally established as a wood post in July, 1821.



Kenneth E. Hedge
Kenneth E. Hedge, County Surveyor

James S. Swift
James S. Swift, IN LS 20200054
March 1, 2012

Marion Twp



SECTION CORNER RECORD

NE 500-1100

BOONE COUNTY SURVEYOR'S OFFICE

State Plane grid coordinates NAD83 (NSRS 2007):

North: 1773226.98 East: 3182760.89 (U.S. survey feet)

Type of monument: 1 inch diameter iron pin in concrete

Depth: flush with adjacent road surface

Indiana tie card references:

IN02_T19NR2E02_80

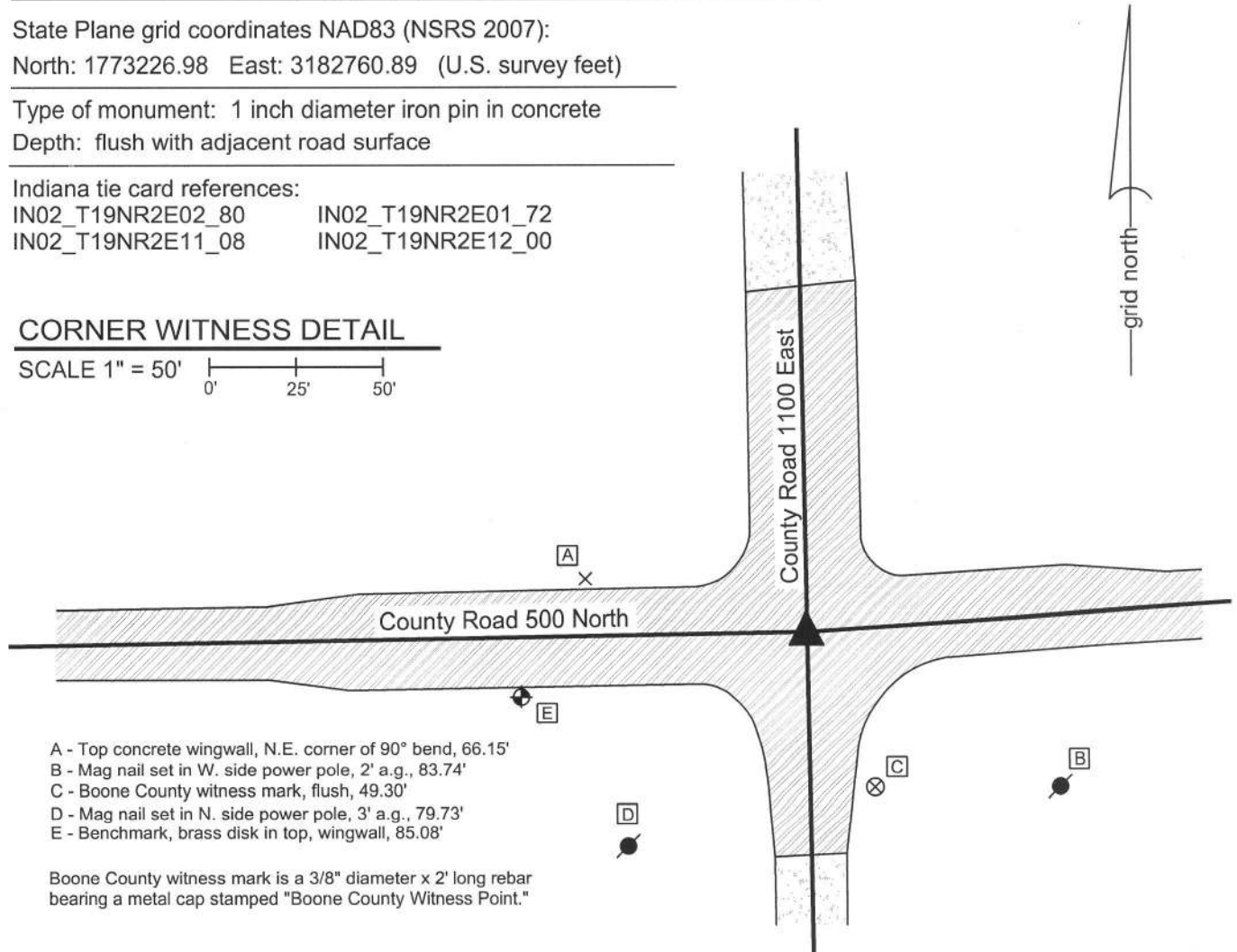
IN02_T19NR2E01_72

IN02_T19NR2E11_08

IN02_T19NR2E12_00

CORNER WITNESS DETAIL

SCALE 1" = 50'



- A - Top concrete wingwall, N.E. corner of 90° bend, 66.15'
- B - Mag nail set in W. side power pole, 2' a.g., 83.74'
- C - Boone County witness mark, flush, 49.30'
- D - Mag nail set in N. side power pole, 3' a.g., 79.73'
- E - Benchmark, brass disk in top, wingwall, 85.08'

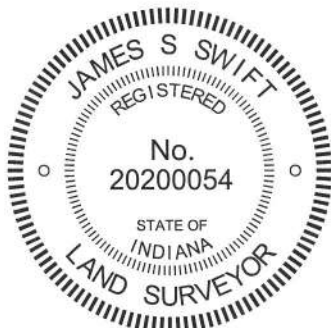
Boone County witness mark is a 3/8" diameter x 2' long rebar bearing a metal cap stamped "Boone County Witness Point."

A harrison monument was set over a stone found in the spring of 2011. The iron pin was set by others, in place of the harrison monument in the spring of 2012 as part of a bridge construction project.

A BCS record of September 23, 1870 states "Reestablished from a rock set where I drove stake when surveying the road. Marked rock that was there and set on top 16.14.12 +." A BCS tie card dated June, 1970 states "found stone. Replace top with Rail, bottom still in place."

This corner was excavated on April 13, 2011. Prior to excavation a section of railroad rail, evidently leaning towards the south, was found in a hole in the asphalt with a 5/8 inch diameter rebar on the east edge of the rail. The rail and rebar were removed and a stone was found at 34 inches deep. The stone is of an odd shape on top, being total of 8 inches N-S by 8 inches E-W, but being in the form of a "T" with a 5 inch arm oriented towards the north. An etched + was clearly visible, situated at the intersection of the N-S arm with the E-W arm. The height of the stone was not measured. As found, the rail was leaning south. Measurements indicated that the bottom of the rail had been below the level of the top of the stone, likely touching it on the north side and the top of the rail was 4 inches south of the etched + mark on the stone. The + mark of the stone was held as marking the corner. The stone was left in place and the harrison monument was set over the etched +. Subsequently the culverts to the immediate north and west of the corner were replaced and the harrison monument was removed during reconstruction of the intersection. The harrison was replaced in the same position by the 1 inch diameter iron pin. It is not documented whether the stone was left in place.

This corner was originally established as a wood post in June, 1821.



Kenneth E. Hedge
Kenneth E. Hedge, County Surveyor

James S. Swift
James S. Swift, IN LS 20200054
February 6, 2013

Marion Township

Section 2 T19N, R2E	Section 1 T19N, R2E
Section 11 T19N, R1E	Section 12 T19N, R2E

PHOTOGRAPHIC DOCUMENTATION

Date of photography: April 13, 2011

View of the top of the railroad rail as found.



The stone found at 34 inches deep.



The stone found at 34 inches deep.



Close-up of the stone found. Note the etched + at the "T" intersection of the two parts of the stone.



For details and documentation, refer to related sheet "Section Corner Record."

SECTION CORNER RECORD

BOONE COUNTY SURVEYOR'S OFFICE

NE 550-1000

State Plane grid coordinates NAD83 (CORS96):

North: 1775787.55 East: 3177385.24 (U.S. survey feet)

Type of monument: Harrison, 4" disk 'Section Corner'

Depth: One inch below adjacent road surface

Indiana tie card references:

IN02_T19NR2E03_44

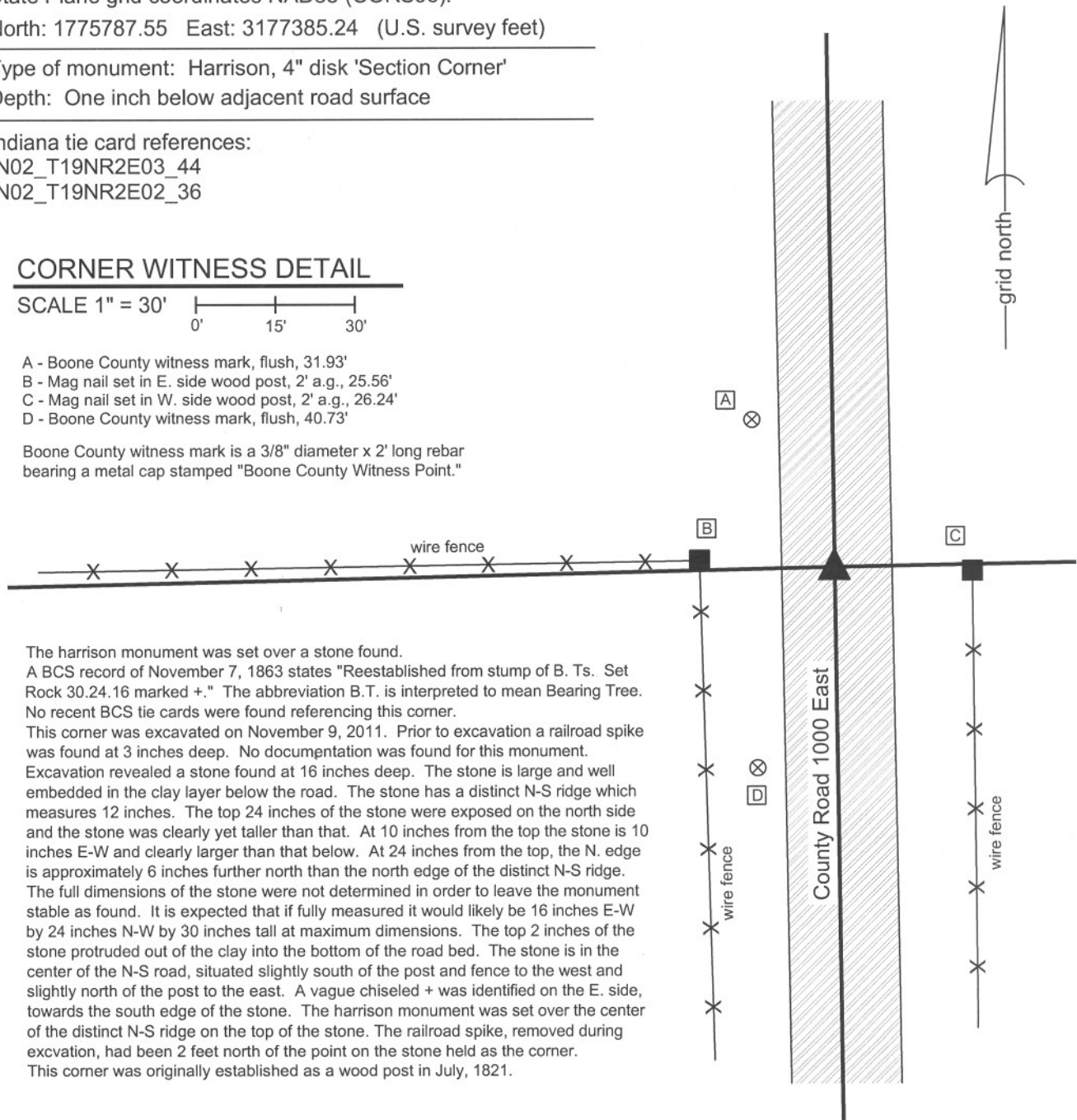
IN02_T19NR2E02_36

CORNER WITNESS DETAIL

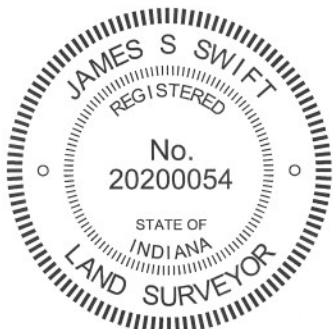
SCALE 1" = 30'

- A - Boone County witness mark, flush, 31.93'
- B - Mag nail set in E. side wood post, 2' a.g., 25.56'
- C - Mag nail set in W. side wood post, 2' a.g., 26.24'
- D - Boone County witness mark, flush, 40.73'

Boone County witness mark is a 3/8" diameter x 2' long rebar bearing a metal cap stamped "Boone County Witness Point."



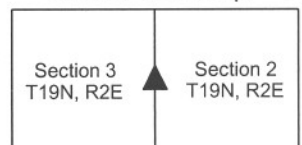
The harrison monument was set over a stone found.
 A BCS record of November 7, 1863 states "Reestablished from stump of B. Ts. Set Rock 30.24.16 marked +." The abbreviation B.T. is interpreted to mean Bearing Tree. No recent BCS tie cards were found referencing this corner.
 This corner was excavated on November 9, 2011. Prior to excavation a railroad spike was found at 3 inches deep. No documentation was found for this monument.
 Excavation revealed a stone found at 16 inches deep. The stone is large and well embedded in the clay layer below the road. The stone has a distinct N-S ridge which measures 12 inches. The top 24 inches of the stone were exposed on the north side and the stone was clearly yet taller than that. At 10 inches from the top the stone is 10 inches E-W and clearly larger than that below. At 24 inches from the top, the N. edge is approximately 6 inches further north than the north edge of the distinct N-S ridge. The full dimensions of the stone were not determined in order to leave the monument stable as found. It is expected that if fully measured it would likely be 16 inches E-W by 24 inches N-W by 30 inches tall at maximum dimensions. The top 2 inches of the stone protruded out of the clay into the bottom of the road bed. The stone is in the center of the N-S road, situated slightly south of the post and fence to the west and slightly north of the post to the east. A vague chiseled + was identified on the E. side, towards the south edge of the stone. The harrison monument was set over the center of the distinct N-S ridge on the top of the stone. The railroad spike, removed during excvation, had been 2 feet north of the point on the stone held as the corner.
 This corner was originally established as a wood post in July, 1821.



Kenneth E. Hedge
 Kenneth E. Hedge, County Surveyor

James S. Swift
 James S. Swift, IN LS 20200054
 March 1, 2012

Marion Township



PHOTOGRAPHIC DOCUMENTATION

Date of photography: November 9, 2011

View of the stone as first exposed.



View of the stone more fully exposed.
View is from above and west.



View from the north, looking across the stone
and south along County Road 1000 East.



View of the stone from above.



View of the stone from above and east.



For details and documentation, refer to related sheet "Section Corner Record."

SECTION CORNER RECORD

BOONE COUNTY SURVEYOR'S OFFICE

NE 550-1100

State Plane grid coordinates NAD83 (NSRS 2007):
 North: 1775878.38 East: 3182711.94 (U.S. survey feet)

Type of monument: Harrison, 4" disk 'Section Corner'
 Depth: six inches below adjacent gravel road surface

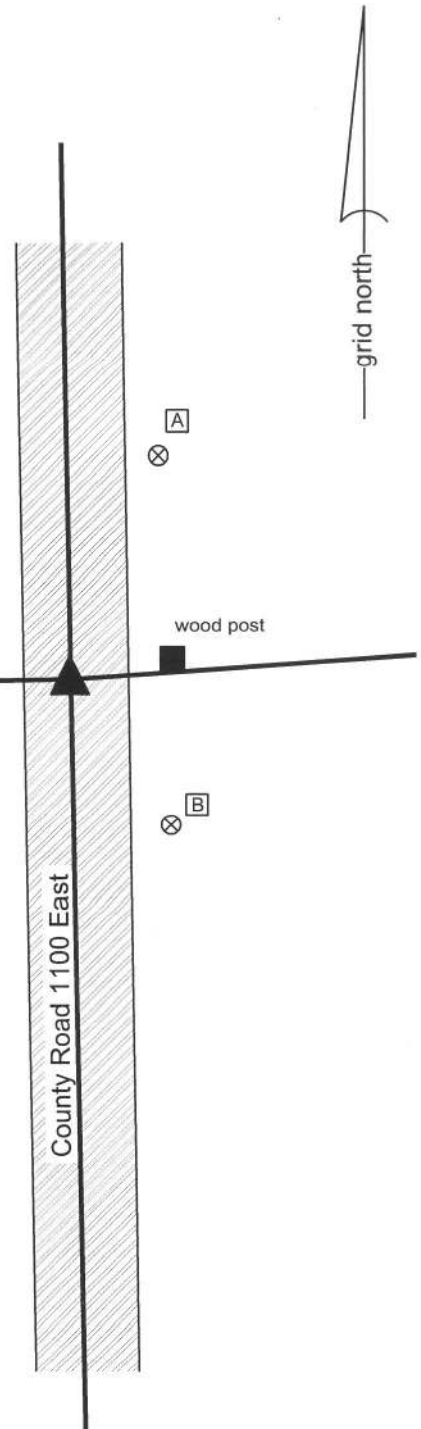
Indiana tie card references:
 IN02_T19NR2E02_44
 IN02_T19NR2E01_36

CORNER WITNESS DETAIL

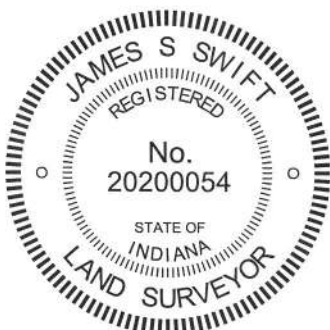
SCALE 1" = 30'

- A - Boone County witness mark, flush, 37.45'
- B - Boone County witness mark, flush, 27.38'
- C - Boone County witness mark, flush, 22.53'

Boone County witness mark is a 3/8" diameter x 2' long rebar bearing a metal cap stamped "Boone County Witness Point."



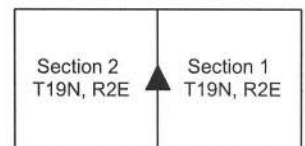
The harrison monument was set over a stone found.
 A BCS record of September 21-22, 1870 states "Reest from intersection of lines from West with Sect. line and some roots on one tree. Set a Rock 7.7.3 +. Top Rock 14.10-8 +." No recent BCS tie cards were found referencing this corner.
 This corner was excavated on November 15, 2011. Prior to excavation a 5/8 inch diameter rebar was found at 4 inches deep in the gravel road. No documentation was found associated with this rebar. Excavation revealed both of the stones described in the 1870 record along with another, larger rock adjacent to and south of the record stone. The top stone described in the 1870 record was found at 8 inches deep. As found, it appeared to have been knocked over from the south and was on its side. The stone was removed and was found to measure 15 inches by 10 inches by 8 inches with a distinct etched +. As found, the etched + was at the north edge of the stone. As stood up, the stone was vertical and the etched + was on the top. The record lower stone was found directly below this stone, measuring approximately 8 inches N-S by 7 inches E-W by 3 1/2 inches tall with a distinct etched + on the top center. This stone did not appear to be disturbed. A larger rock, measuring 11 inches N-S by 24 inches E-W by 11 inches tall, as measured on the N. edge, was found immediately north of the record stones. This rock was at 16 inches deep and appeared to be acting as a brace for the record top stone. The top of the record lower stone was at 18 inches deep. The top of the record top stone, if vertical, would have been approximately 3 inches deep. It is not surprsing, therefore, that the stone might have been hit by the blade of a road grader and knocked over. The record lower stone and the large, apparent brace rock were both left in place and a harrison monument was set directly over the etched + on the lower stone.
 The rebar, removed during excavation, had been 3.6 feet north of the etched + on the lower stone.
 This corner was originally established as a wood post in June, 1821.



Kenneth E. Hedge
 Kenneth E. Hedge, County Surveyor

James S. Swift
 James S. Swift, IN LS 20200054
 March 1, 2012, Revised March 7, 2013

Marion Township



PHOTOGRAPHIC DOCUMENTATION

Date of photography: November 15, 2011

View of the upper record stone as first exposed, evidently lying on its side with the original top of the stone to the north (left in this picture).



The upper record stone, removed from the road bed and placed in the orientation in which it was likely set in 1861, with the etched + on top.



The lower record stone and the large "brace" rock to the south. Note the distinct etched + mark on the top of the lower record stone.



Similar picture to the left, from a different angle and showing the record stone more fully exposed.



For details and documentation, refer to related sheet "Section Corner Record."