

SECTION CORNER RECORD

SE 000-1000

BOONE COUNTY SURVEYOR'S OFFICE

State Plane grid coordinates NAD83 (2011):

North: 1746657.44 East: 3177847.17 (U.S. survey feet)

North: 1746655.70 East: 3177785.15 (U.S. survey feet)

Type of monument: Railroad spike

Depth: Flush with adjacent road surface

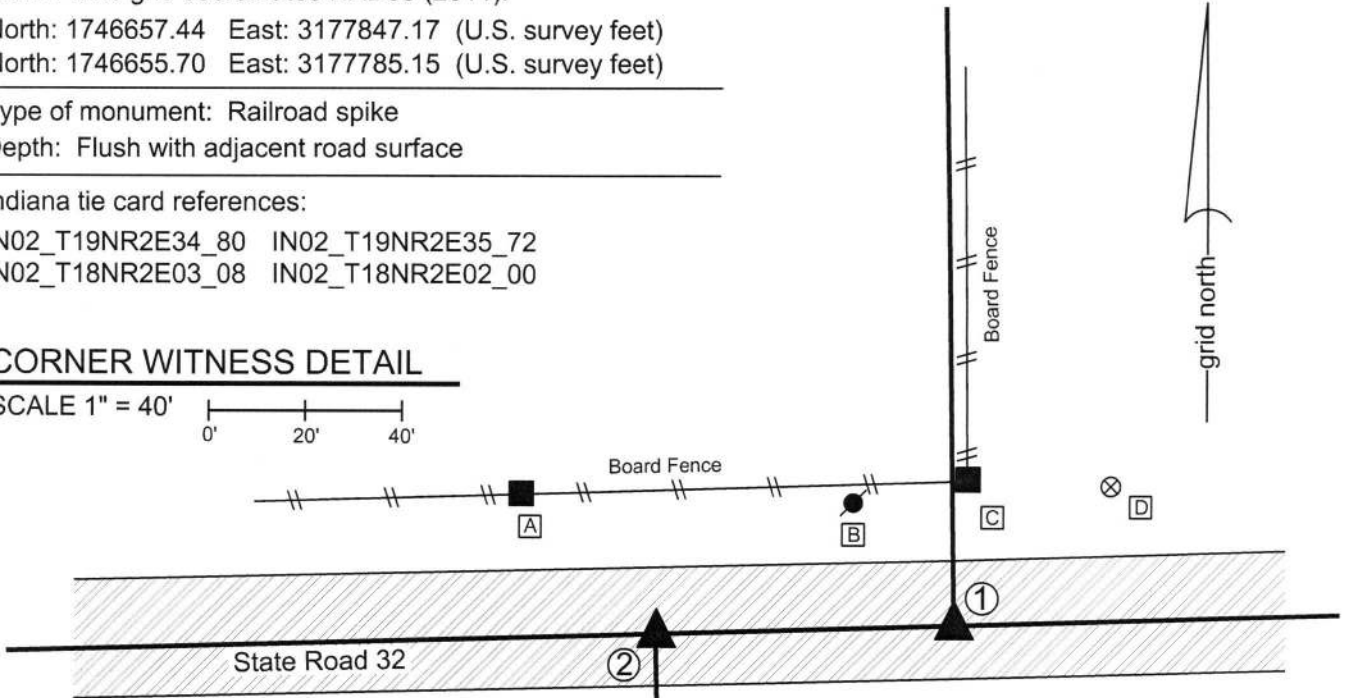
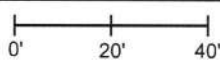
Indiana tie card references:

IN02_T19NR2E34_80 IN02_T19NR2E35_72

IN02_T18NR2E03_08 IN02_T18NR2E02_00

CORNER WITNESS DETAIL

SCALE 1" = 40'



A - Mag nail set in S. edge wood post,
94.5' to corner 1, 40.7' to corner 2

B - Nail in bottle cap found in S.E. side power pole, 1' a.g.
31.2' to corner 1, 50.3' to corner 2

C - Mag nail set in S. side wood post, 0.6' a.g.,
30.1' to corner 1, 72.1' to corner 2

D - Boone County witness mark, flush
43.6' to corner 1, 99.5' to corner 2

① S.E. Corner, Section 34
S.W. Corner, Section 35
T 19 N, R 2 E

② N.W. Corner, Section 2
N.E. Corner, Section 3
T 18 N, R 2 E

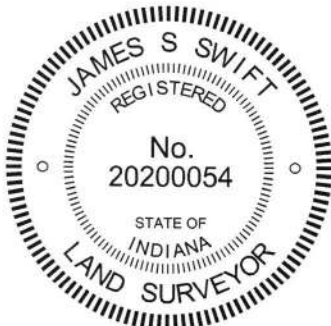
Distance between monuments = 62.04' (94 links)

The railroad spikes were set at calculated positions.

Prior to the establishment of these corners, no existing monuments were found marking the corners, nor were consistent, widely accepted positions found documented for the corners. A Mag nail found in the general vicinity of Corner 1 does not fit with local evidence and was not held as marking the corner. The available evidence which indicates the original positions of these corners was found in the form of the existing roadway of S.R. 32 and a section of ancient fence found existing from approximately one-quarter mile north of Corner 1, north for approximately 250 feet, at which point an ancient corner post exists at the corner of fences to the south and east. The post is witnessed by a rebar situated at the northwest edge of the post. It was discovered that a line prolonged from the west quarter corner of section 25 (see BCS Corner NE-050-1000) through the aforementioned corner post coincides precisely with the remaining section of old fence south of said post. It was also discovered that computing the southeast corner of section 24 (Corner 1) at the point where said prolonged line intersects the center of SR 32, this position fits well with the relative positions of the southwest and south quarter corners of Section 34 and the northwest and north quarter corners of Section 3. Computing the position of Corner 2 at the record closing offset of 94 links west of Corner 1 produces a position which fits generally well with deed descriptions in Section 2 and 3. The computed positions were held as marking the corners. These positions were supplied to INDOT for purposes of determining the locations of the corners for a Location Route Control Survey by INDOT, certified by Frank T. Luse, INDOT District Surveyor, recorded in Survey Book 13, page 50. The computed positions were held by INDOT for the surveys associated with the reconstruction of the intersection of SR 32 and US 431 in 2015. The railroad spikes were set on August 28, 2015. It is noted that a board fence north and slightly east of Corner 1 appears to serve as an animal enclosure, is not associated with existing deed lines and does not appear to be evidence of the original section lines.

Corner 1 was originally established as a wood post in 1819. Corner 2 was originally established as a wood post in 1821.

Union Township



Kenneth E. Hedge
Kenneth E. Hedge, County Surveyor

James S. Swift
James S. Swift, IN LS 20200054
March 23, 2017

Section 34 T19N, R2E	Section 35 T19N, R2E
Section 3 T18N, R2E	Section 2 T18N, R2E

SECTION CORNER RECORD

SE 050-1000

BOONE COUNTY SURVEYOR'S OFFICE

State Plane grid coordinates NAD83 (2011):

North: 1744264.96 East: 3177836.12 (U.S. survey feet)

Type of monument: 5/8" rebar with metal cap stamped 'Boone County Surveyor'

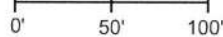
Depth: 14 inches below grade

Indiana tie card references:

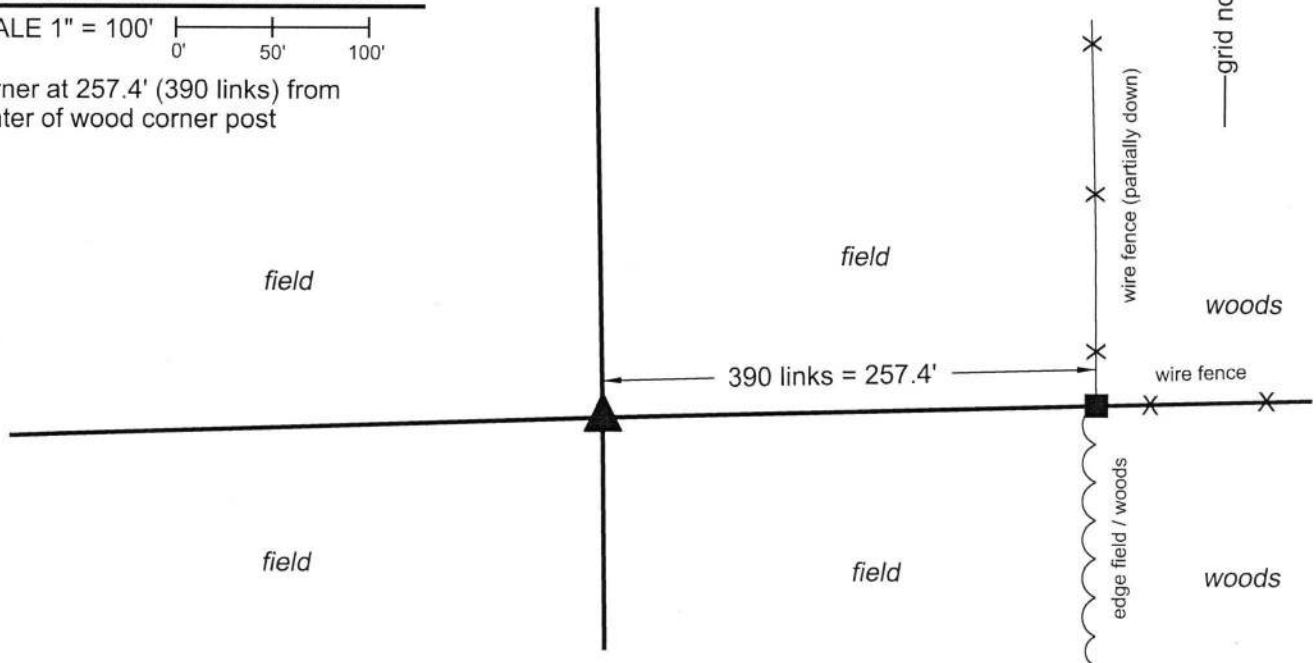
IN02_T18NR2E02_36 IN02_T18NR2E03_44

CORNER WITNESS DETAIL

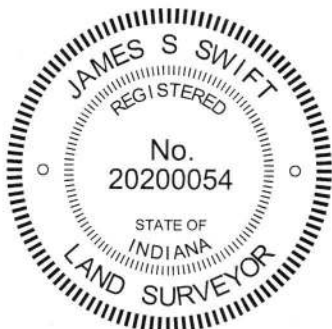
SCALE 1" = 100'




Corner at 257.4' (390 links) from center of wood corner post



The corner is monumented by a 30 inch length of rebar with metal cap stamped 'Boone County Surveyor' set at 14 inches deep in a tilled field. A BCS record of February 26, 1894 states, with respect to this corner, "Marked + the rock already set." Neither recent BCS tie cards nor surveys recorded in the Office of the Boone County Recorder were found referencing this corner. This corner was monumented on May 3, 2019. The corner falls in a tilled field and no evidence of the corner was found in the immediate vicinity of the corner. However, an ancient fence does exist along parts of the line between the westerly terminus of the fence, 257.4 feet east of the corner and a railroad rail shown by this office to be at the center of section 2. Two different distances are reported for the surrounding and adjacent deeds. The current description for the land surrounding the corner calls for a point on the south line of the northeast quarter of section 2, said point being 257.40 feet easterly of the subject corner. The current description for the land to the east of the field in which the subject corner is located calls for beginning 259.95 feet easterly of the corner. As noted above, a wood corner post was found at the westerly terminus of an ancient fence to the east. No rebars or other survey monuments were found in the vicinity of the post and the post appears to represent the best evidence of the ancient property corner. To resolve the ambiguity with respect to the different deed distances, an older deed was found for the land to the east. This deed, from the Estate of Charles Alvin Taylor to Edward R. Atkins, dated April 11, 1964 and recorded in Deed Record 176, page 586 in the Office of the Boone County Recorder calls for a distance of 390 links (257.4 feet) from the subject corner. Hence, the ambiguity of the distances was resolved in favor of the 257.4 foot dimension. No survey or other supporting evidence was found to support the 259.95 foot dimension. The corner was established on the westerly prolongation of a line connecting the railroad rail at the center of section 2 and the aforementioned wood corner post and westerly terminus of the standing fence, 257.40 feet from the center of the post. This corner was originally established as a wood post in 1821.




Kenneth E. Hedge, County Surveyor


James S. Swift, IN LS 20200054
June 26, 2019

Union Township

Section 3 T18N, R2E	Section 2 T18N, R2E
------------------------	------------------------

SECTION CORNER RECORD

SE 050-1100

BOONE COUNTY SURVEYOR'S OFFICE

State Plane grid coordinates NAD83 (NSRS 2007):
 North: 1744417.89 East: 3183267.93 (U.S. survey feet)

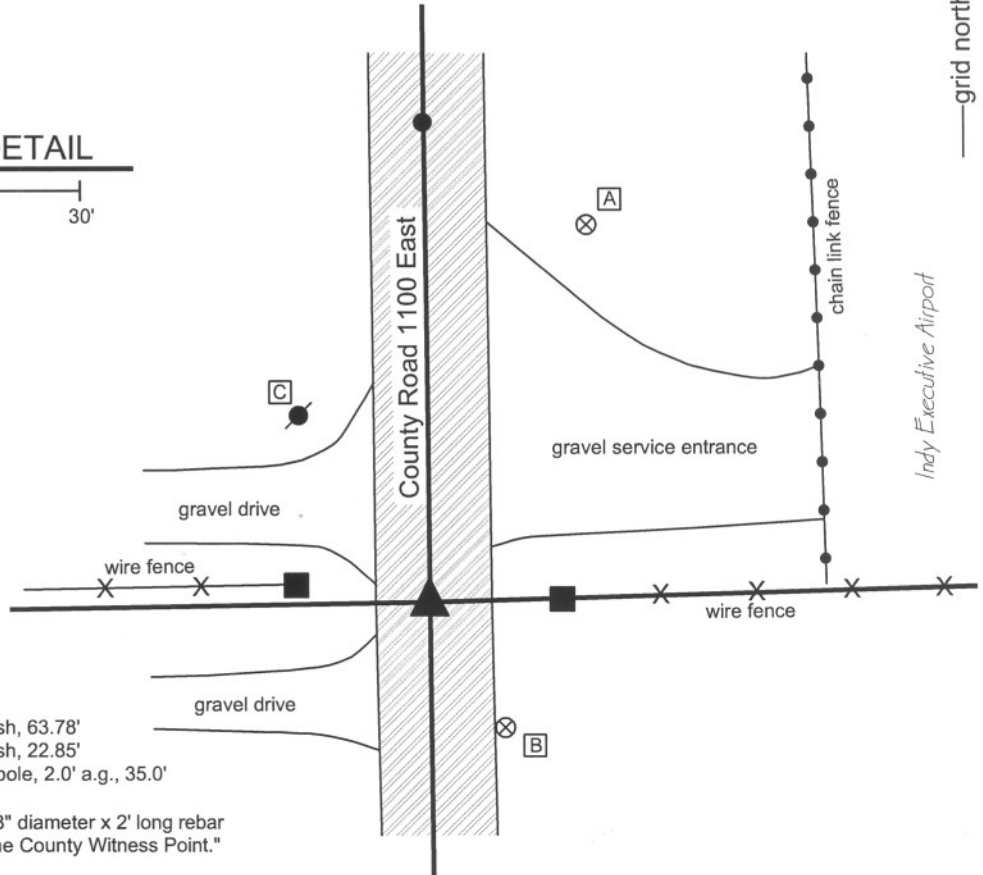
Type of monument: Harrison, 4" disk 'Section Corner'
 Depth: One inch below adjacent road surface

Indiana tie card references:
 IN02_T18NR2E01_36
 IN02_T18NR2E02_44



CORNER WITNESS DETAIL

SCALE 1" = 30'
 0' 15' 30'



- A - Boone County witness mark, flush, 63.78'
- B - Boone County witness mark, flush, 22.85'
- C - Mag nail set in S.E. side power pole, 2.0' a.g., 35.0'

Boone County witness mark is a 3/8" diameter x 2' long rebar bearing a metal cap stamped "Boone County Witness Point."

The harrison monument was set in place of a bolt spike over a stone found.
 A BCS tie card dated May 30, 1991 shows the corner as a bolt spike. This tie card also shows a rebar 3.2 feet north of the spike. No specific records of the corner were found in the BCS Surveyor's Record, though the corner is depicted as the terminal point for measurements in 1834, 1837 and 1897. This corner was excavated on May 14, 2009. Prior to excavation the bolt spike and the rebar shown on the 1991 tie card were visible. The bolt spike was 2 inches below the adjacent pavement and the rebar was flush with the pavement. A stone was found at 11 inches deep measuring 6 inches E-W by 5 inches N-S with the top 6 inches of the stone exposed. The stone is well embedded in the clay layer below the road and protrudes approximately 4 inches out of the clay into the base layer of the road. With 6 inches exposed the stone remained entirely stable in the clay. The stone was left in place and the total height was not measured. An etched "+" is visible on the top of the stone. Prior to exposing the stone the bolt spike had been removed but it was apparent that the bolt spike had been driven along the west edge of the stone at an angle and leaning over the top of the stone. The harrison monument was set in the position of the bolt spike, over the west side of the top of the stone, 0.15 foot west of the etched "+" on top of the stone. This corner was originally established as a wood post in July, 1821.



Kenneth E. Hedge
 Kenneth E. Hedge, County Surveyor

James S. Swift
 James S. Swift, IN LS 20200054
 July 14, 2010

Union Township

Section 2 T18N, R2E	Section 1 ▲ T18N, R2E
------------------------	-----------------------------

PHOTOGRAPHIC DOCUMENTATION

Date of photography: May 14, 2009

View of the stone as first exposed.



View of the stone from above, wetted, showing the etched + on the top of the stone.



View from the north, looking across the stone and south along County Road 1100 East.



View from the west, looking across the stone and east along the old fence.



For details and documentation, refer to related sheet "Section Corner Record."

SECTION CORNER RECORD

SE 100-1100

BOONE COUNTY SURVEYOR'S OFFICE

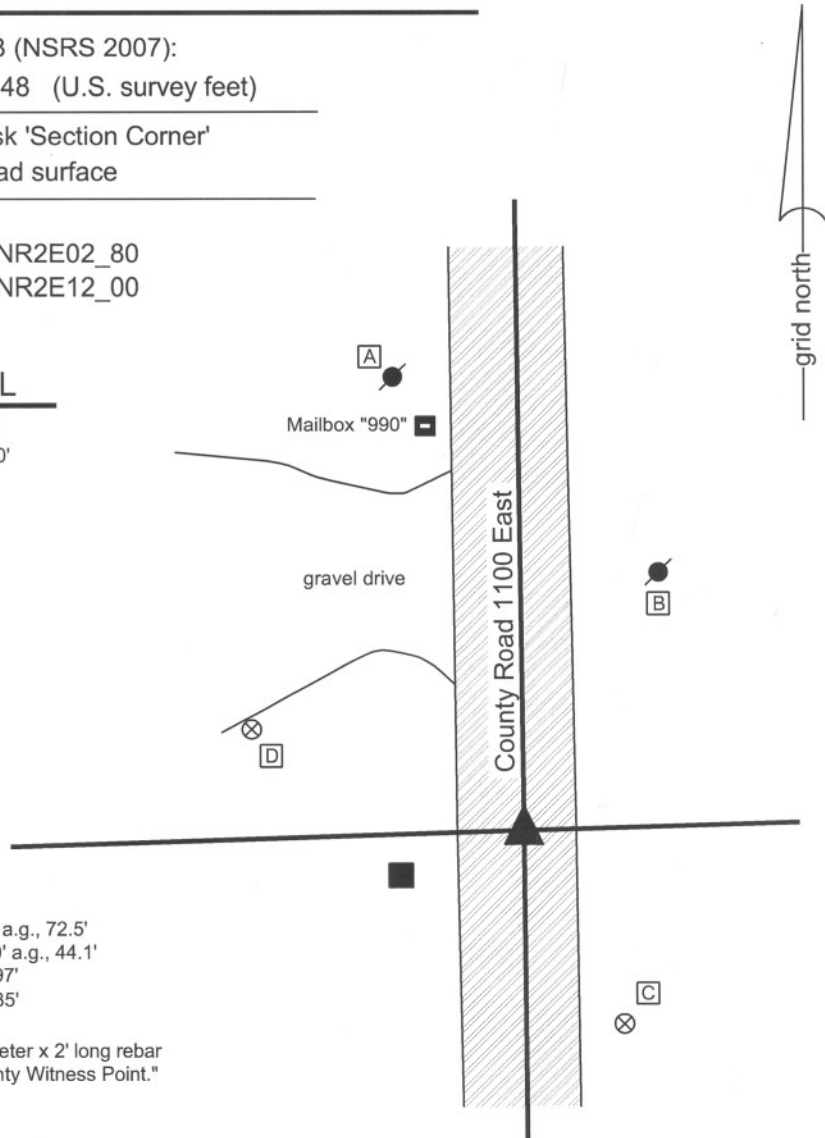
State Plane grid coordinates NAD83 (NSRS 2007):
North: 1741780.88 East: 3183299.48 (U.S. survey feet)

Type of monument: Harrison, 4" disk 'Section Corner'
Depth: One inch below adjacent road surface

Indiana tie card references:
IN02_T18NR2E01_72 IN02_T18NR2E02_80
IN02_T18NR2E11_08 IN02_T18NR2E12_00

CORNER WITNESS DETAIL

SCALE 1" = 30'
0' 15' 30'



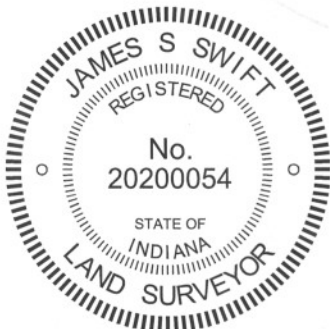
- A - Mag nail set in SE side power pole, 2.0 a.g., 72.5'
- B - Mag nail set in SW side power pole, 2.0' a.g., 44.1'
- C - Boone County witness mark, flush, 33.97'
- D - Boone County witness mark, flush, 45.35'

Boone County witness mark is a 3/8" diameter x 2' long rebar bearing a metal cap stamped "Boone County Witness Point."

The harrison monument was set over a stone found.

A BCS record of August 25, 1871 states "Reestablished Set a Rock 20.12 by 9 +." A BCS tie card dated May 31, 1991 shows the corner as a 5/8 inch rebar found. This corner was excavated on May 1, 2009. Prior to excavation a 5/8 inch rebar with a red plastic cap was found flush with the surface, in agreement with the 1991 distance ties. Excavation revealed the record stone found at 16 inches deep south and east of the rebar. With 13 inches of the stone exposed, the stone measures 12 inches E-W by 9 inches N-S. The etched "+" is clearly visible on the top of the stone. The stone is completely embedded in the clay layer below the road bed, with the top of the stone approximately at the top of the clay layer. The stone is split horizontally at 6 inches from the top. After measuring and documenting the stone, the top portion was reset on the bottom portion and packed back together with the surrounding clay. The entire stone was left in place. The harrison monument was set directly over the etched "+" on the stone, which point is 1.1 feet south and 3.5 feet east of the rebar (removed during excavation.)

This corner was originally established as a wood post in July, 1821.



Kenneth E. Hedge
Kenneth E. Hedge, County Surveyor

James S. Swift
James S. Swift, IN LS 20200054

July 14, 2010, Revised April 30, 2012

Union Township

Section 2 T18N, R2E	Section 1 T18N, R2E
Section 11 T18N, R2E	Section 12 T18N, R2E

PHOTOGRAPHIC DOCUMENTATION

Date of photography: May 1, 2009

View of the stone as first exposed.



View of the stone more fully exposed.
View from above and south.



View from over the stone, looking north along
County Road 1100 East.



Similar view to above with the etched mark
on the top of the stone brushed clean.



View of the stone from above and west.



For details and documentation, refer to
related sheet "Section Corner Record."