

# SECTION CORNER RECORD

# SE 600-1000

## BOONE COUNTY SURVEYOR'S OFFICE

State Plane grid coordinates NAD83 (NSRS 2007):

North: 1715214.92 East: 3178233.82 North: 1715215.92 East: 3178265.16 (U.S. survey feet)

Type & depth of monument:

Standard corner (West): Harrison, 4" disk 'Section Corner' one inch below adjacent road surface.

Closing corner (East): Harrison, 4" disk "Section Corner' flush with ground.

Indiana tie card references:

IN02\_T17NR2E02\_00

IN02\_T17NR2E03\_08

IN02\_T18NR2E34\_80

IN02\_T18NR2E35\_72

The harrison monuments were both set over stones found. A BCS record of November 7,8,9, 1894 states "Reestablished from lap. Set Rock + 19.12.7 at corner. Set Rock + 9.20.12 under. Several small stones around. Corner section 2 + 3 East 48 [links]."

BCS field notes dated 12/2/1968 call for a stone at the standard corner (common to sections 34 and 35). However, the tie card made from these field notes was identified as being for the south quarter corner of section 34, 1/2 mile west, and the tie card has long been improperly referenced to the wrong corner. A BCS tie sheet dated June 15, 1989 calls for a stone at the closing corner (common to sections 2 and 3).

Many surveys in this vicinity call for the stone at the closing corner. This set of corners was originally excavated and the standard corner monumented on December 4, 2007, with final monumentation at the closing corner completed on December 11, 2008.

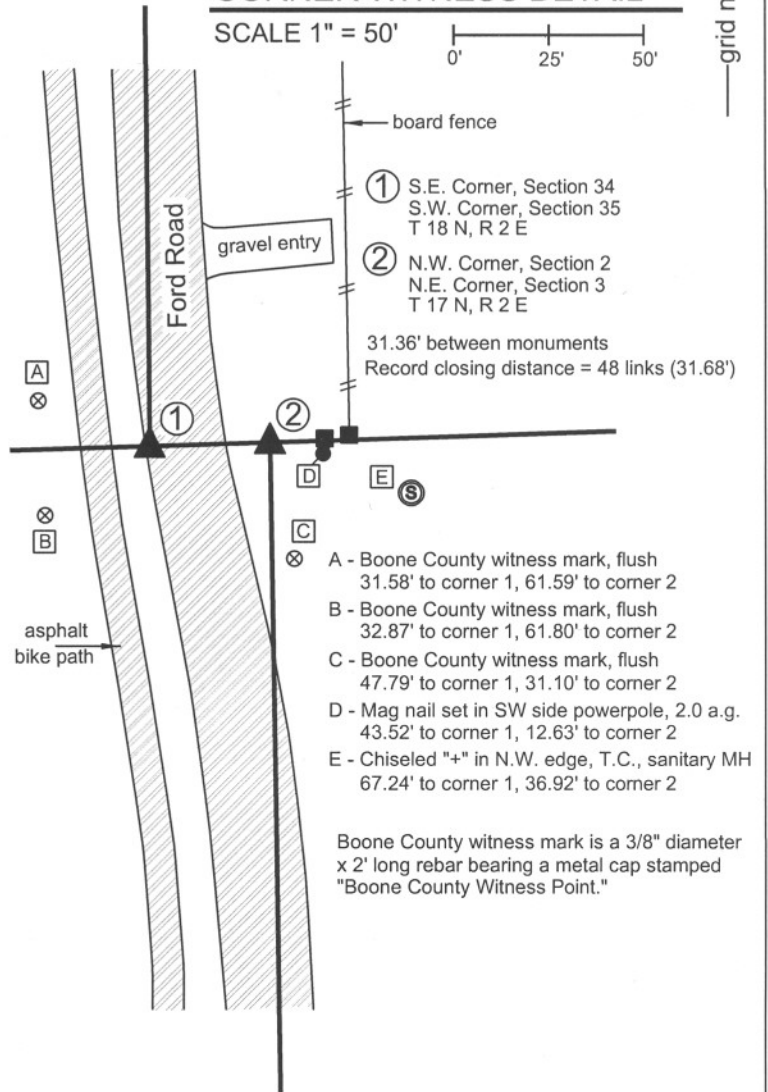
Prior to excavation a 5/8 inch rebar was visible in a hole in the asphalt in the vicinity of the standard corner and a harrison monument was visible at the surface of the ground in the vicinity of the closing corner. No documentation was found for the source of either of these monuments. Excavation revealed stones at both corners. The stone at the standard corner was found 2 feet deep, completely established in the clay and appears to be the record lower stone from 1894. Iron pipes were found on the east and south sides of this stone. The 5/8 inch rebar which had been the visible monument prior to excavation had been driven into the iron pipe on the east side of the stone. The harrison monument at the closing corner was set in a minimal amount of concrete and was easily removed. The stone at the closing corner was found approximately 10 inches deep 1.5 feet west of the harrison monument. The record federal offset distance (as well as record 1894 "lap") at this corner is 48 links or 31.68 feet. The top, centers of the two stones are 31.36 feet apart. The harrison monument at the standard corner was set over the top, center of the stone found. From December 4, 2007 to December 11, 2008, the stone at the closing corner was left visible within a piece of 12 inch smooth corner black storm pipe, set vertically. On December 11, 2008 a harrison monument was set over the top of this stone, on line between the harrison monuments at the southwest and south quarter corners of section 35. This monument was truncated at 8 inches and set in concrete within the vertical storm pipe over the stone. The top of the stone was encased in concrete. At 1 foot below the top of the stone, it measures 14 inches N-S by 12 inches E-W and is very stable, clearly extending deeper into the ground. A notch was cut out of the bottom of the north edge of the storm pipe to fit it over the stone.

These corners were originally established as wood posts in 1819 (standard) and 1821 (closing).

### CORNER WITNESS DETAIL

SCALE 1" = 50'

0' 25' 50'



*Kenneth E. Hedge*  
Kenneth E. Hedge, County Surveyor

*James S. Swift*  
James S. Swift, IN LS 20200054

March 11, 2009

Eagle Township

Section 34 T18N, R2E	Section 35 T18N, R2E
Section 3 T17N, R2E	Section 2 T17N, R2E



PHOTOGRAPHIC DOCUMENTATION

Date of photography: December 4, 2007 and December 11, 2008

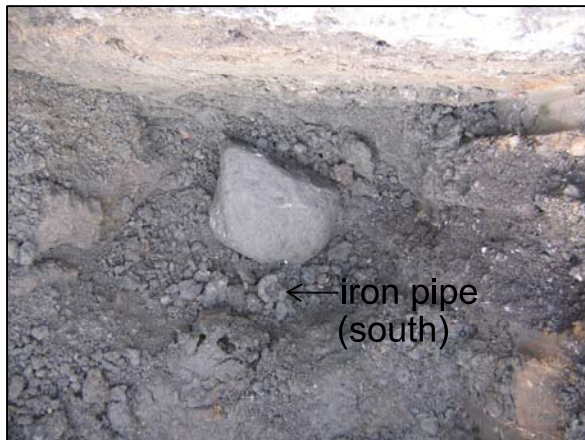
Photograph of the stone at the closing corner (east of Ford Road) and the Harrison monument. The Harrison is 1.5 feet east of the top, center of the stone. The Harrison monument was removed and a new Harrison set over the stone on December 11, 2008.



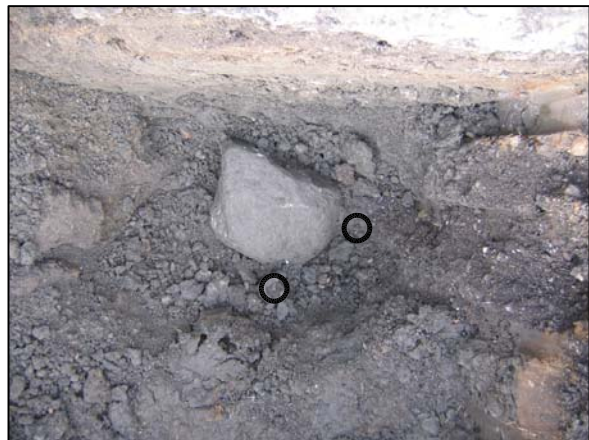
Close up of the closing corner stone with approximately 18 inches of the stone exposed.



Photograph of the record lower stone found at the standard corner (on the west edge of pavement, Ford Road). Note the iron pipe on the south edge of the stone. A similar iron pipe was found on the east edge of the stone, but removed prior to this photo. The iron pipe on the east edge of the stone had a 5/8 inch rebar driven into the center of it. The rebar was the visible monument prior to excavation.



The same photograph as the one that to the left, but with additional graphics highlighting the iron pipe on the south side of the stone and demonstrating the approximate position of the iron pipe which was previously on the east side of the stone.



# SECTION CORNER RECORD

SE 600-1050

## BOONE COUNTY SURVEYOR'S OFFICE

State Plane grid coordinates NAD83 (NSRS 2007):

North: 1715301.47 East: 3180923.19 (U.S. survey feet) (corner 1)

Type of monument: Harrison, 4" disk 'Section Corner' (corner 1)

Depth: 6 inches above adjoining grade in concrete pillar (corner 1)

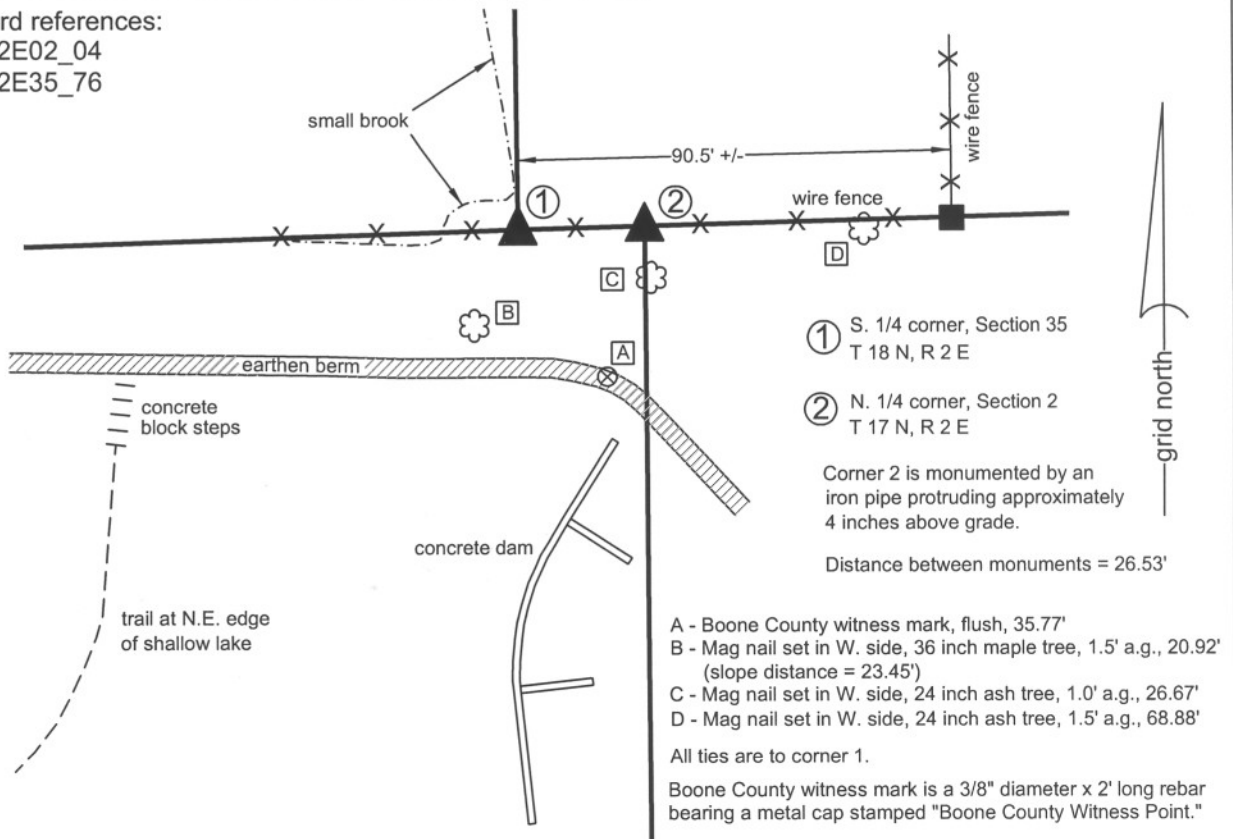
### CORNER WITNESS DETAIL

SCALE 1" = 40'

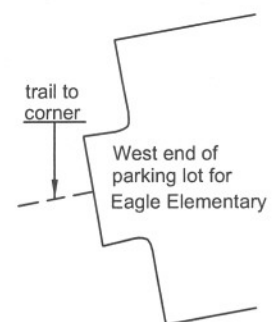
Indiana tie card references:

IN02\_T17NR2E02\_04

IN02\_T18NR2E35\_76



The harrison monument was set in place of an iron pipe found and held as marking the corner. BCS records of April 25 to 28, 1866 discuss this corner extensively, calling for stones set at the standard corner (west, section 35) of 12.8.7 inches with a + on the N. side, under which was set a stone 15.5.4 + on top. The stones set at the closing corner (east, section 2) are 13.9.8 with a + on the S. side, under which was set a stone 6.5.3 + (location of + not specified). Excavation in the form of probing and excavating small rocks took place on several occasion in various conditions of soil saturation. The record stones were not found. Two iron pipes, both in the old east-west fence line, were present in the vicinity of these corners, both of which have been held as marking the respective corners on many private surveys in the vicinity. The source of these pipes is not known. It is observed that the ground in this area has been significantly disturbed both by nature (due to the presence of a small stream in the immediate vicinity of the corners) and by humans (due to the presence of a large, man-made earthen berm immediately south of the corner). The iron pipes were accepted as the best available evidence of the corners and were held as marking such. The iron pipe at the standard corner was replaced with a harrison monument. The 1866 record calls for the distance between the corners to be 40 links (26.4 feet). The measured distance between the harrison and remaining pipe is 26.53 feet. This standard corner was originally established as a wood post in 1819. The closing corner was not established by federal surveyors.

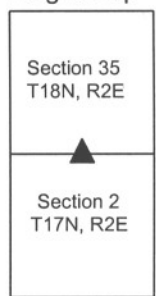


*Kenneth E. Hedge*  
Kenneth E. Hedge, County Surveyor

*James S. Swift*  
James S. Swift, IN LS 20200054

March 11, 2009 Revised July 14, 2010

Eagle Twp



# SECTION CORNER RECORD

SE 600-1100


## BOONE COUNTY SURVEYOR'S OFFICE

State Plane grid coordinates NAD83 (NSRS 2007):

Corner 1: North: 1715374.00 East: 3183593.68 (U.S. survey feet)

Corner 2: North: 1715374.59 East: 3183614.80 (U.S. survey feet)

### CORNER WITNESS DETAIL

SCALE 1" = 50' 

Corner 1:

Type of monument: Harrison, 4" disk 'Section Corner'

Depth: 3 inches above adjacent ground.

Corner 2:

Type of monument: 5/8 inch rebar, 30 inches long with metal cap stamped "Boone County Surveyor" (flush).

Indiana tie card references:

IN02\_T17NR2E01\_00 IN02\_T17NR2E02\_08

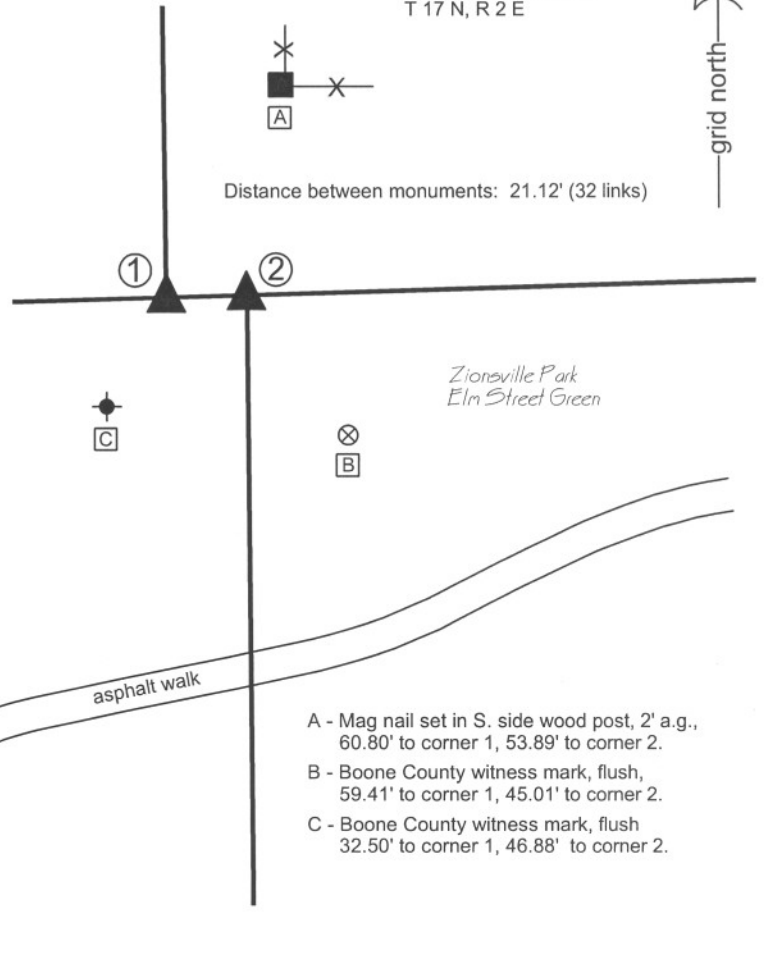
IN02\_T18NR2E35\_80 IN02\_T17NR2E36\_72

The harrison monument at corner 1 was set in place of a one-inch diameter pipe found. The rebar set at corner 2 was set on the township line at the record closing offset distance of 32 links (21.12 feet) east of corner 1.

The BCS Surveyor's Record does not call for stones at either of these corners. No recent tie cards were found for the corners. Several surveys show the pipe as being at corner 1, including a survey by Richard A. O'Brian, recorded in Survey Book 4, page 38. General excavation and probing of the ground in the area did not produce further evidence of the corner. The origin of the pipe is not known, but given the lack of other evidence, including contrary evidence, the pipe was held as marking corner 1. Corner 2 was set relative to the position of Corner 1, as noted above.

① S.E. Corner, Section 35  
S.W. Corner, Section 36  
T 18 N, R 2 E

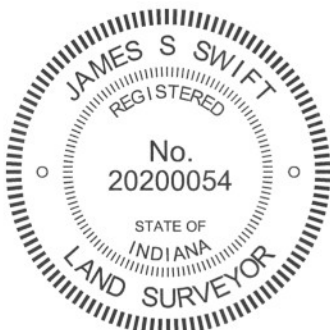
② N.W. Corner, Section 1  
N.E. Corner, Section 2  
T 17 N, R 2 E



A - Mag nail set in S. side wood post, 2' a.g.,  
60.80' to corner 1, 53.89' to corner 2.

B - Boone County witness mark, flush,  
59.41' to corner 1, 45.01' to corner 2.

C - Boone County witness mark, flush  
32.50' to corner 1, 46.88' to corner 2.



*Kenneth E. Hedge*  
Kenneth E. Hedge, County Surveyor

*James S. Swift*  
James S. Swift, IN LS 20200054  
July 25, 2011

Eagle Township

Section 35 T18N, R2E	Section 36 T18N, R2E
Section 2 T17N, R2E	Section 1 T17N, R2E

# SECTION CORNER RECORD

# SE 650-1100

## BOONE COUNTY SURVEYOR'S OFFICE

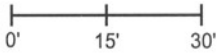
State Plane grid coordinates NAD83 (NSRS 2007):  
North: 1712401.87 East: 3183641.78 (U.S. survey feet)

Type of monument: Harrison, 4" disk 'Section Corner'  
Depth: at grade on slope, in concrete pillar

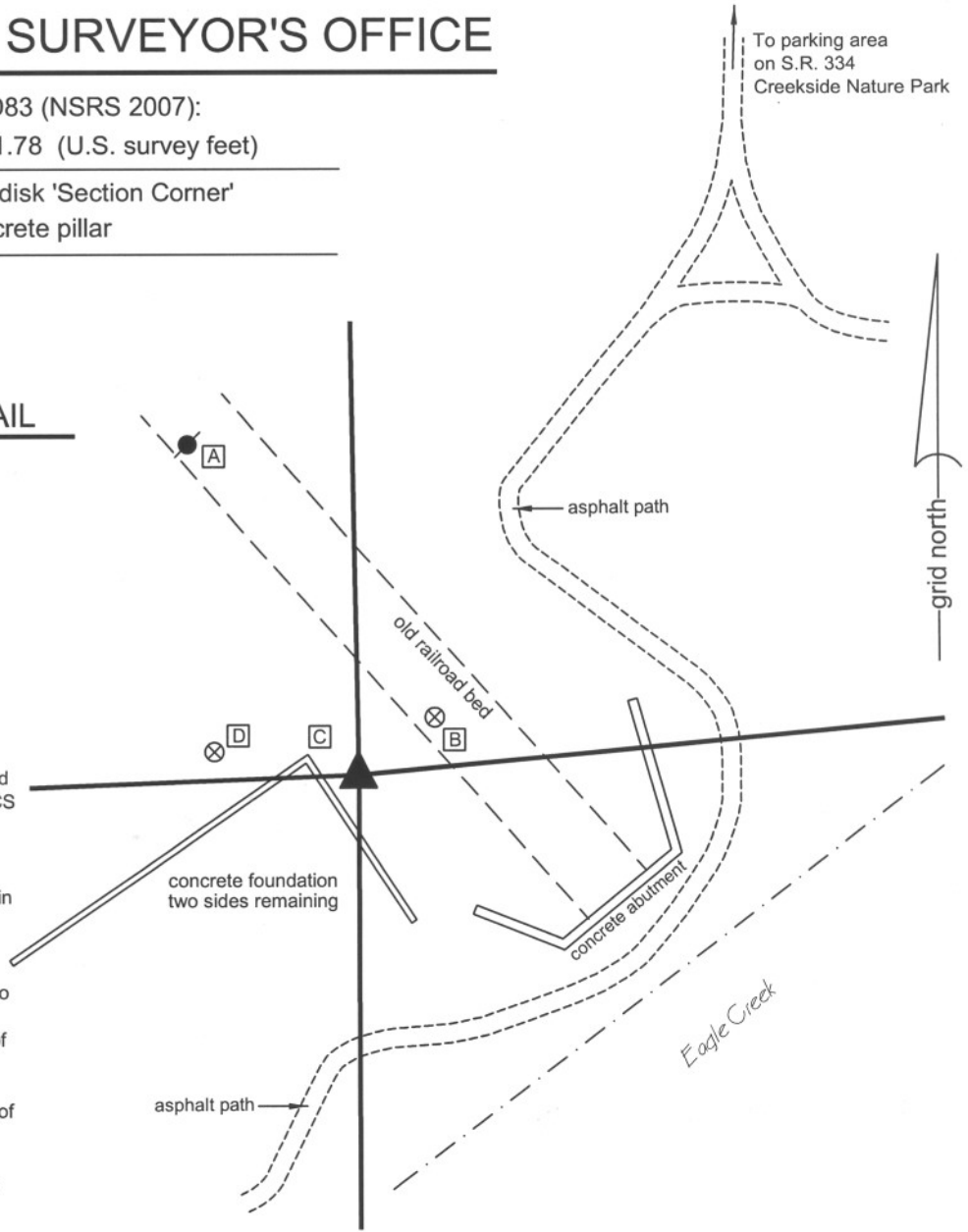
Indiana tie card references:  
IN02\_T17NR2E01\_36  
IN02\_T17NR2E02\_44

### CORNER WITNESS DETAIL

SCALE 1" = 30'



The harrison monument was set in place of a broken-off steel fence post found. A BCS record of October 18, 1865 states "Found from roots of both trees and rotten stake." A BCS tie card of December 9, 1994 shows the corner as a steel fence post with no documentation about source. A survey by the Schneider Corporation dated June 15, 2001 and recorded in Survey Book 5, pages 52-54 discusses the corner and holds the fence post with the statement "Although there was no historical information on this corner, it's location seemed to fit well with the physical evidence of the surrounding deeds (an independent resolution of this corner on Job 861 resulted in a location within 1.5 feet of the location of the metal fence post)." The corner falls on the slope of an area of fill for an old railroad bed and it is not likely that ancient evidence of the corner would be found, given the obvious disturbance to the land in this area. A broken-off metal fence post was found which fits precisely with the ties shown on the 1994 tie card. This object was removed and was replaced with a harrison monument on September 18, 2008. This corner was originally established as a wood post in 1821.



- A - Mag nail set in S. side power pole, 5.4' a.g., 57.90'
- B - Boone County witness mark, flush, 15.14'
- C - Corner concrete foundation, 8.8'
- D - Boone County witness mark, flush, 23.40'

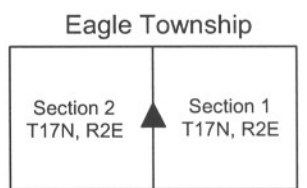
Boone County witness mark is a 3/8" diameter x 2' long rebar bearing a metal cap stamped "Boone County Witness Point."



*Kenneth E. Hedge*  
Kenneth E. Hedge, County Surveyor

*James S. Swift*

James S. Swift, IN LS 20200054  
March 11, 2009 Revised July 14, 2010



# SECTION CORNER RECORD

SE 700-1000

## BOONE COUNTY SURVEYOR'S OFFICE

State Plane grid coordinates NAD83 (NSRS 2007):

North: 1709561.12 East: 3178346.78 (U.S. survey feet)

Type of monument: Harrison, 4" disk 'Section Corner'

Depth: One inch below adjacent road surface

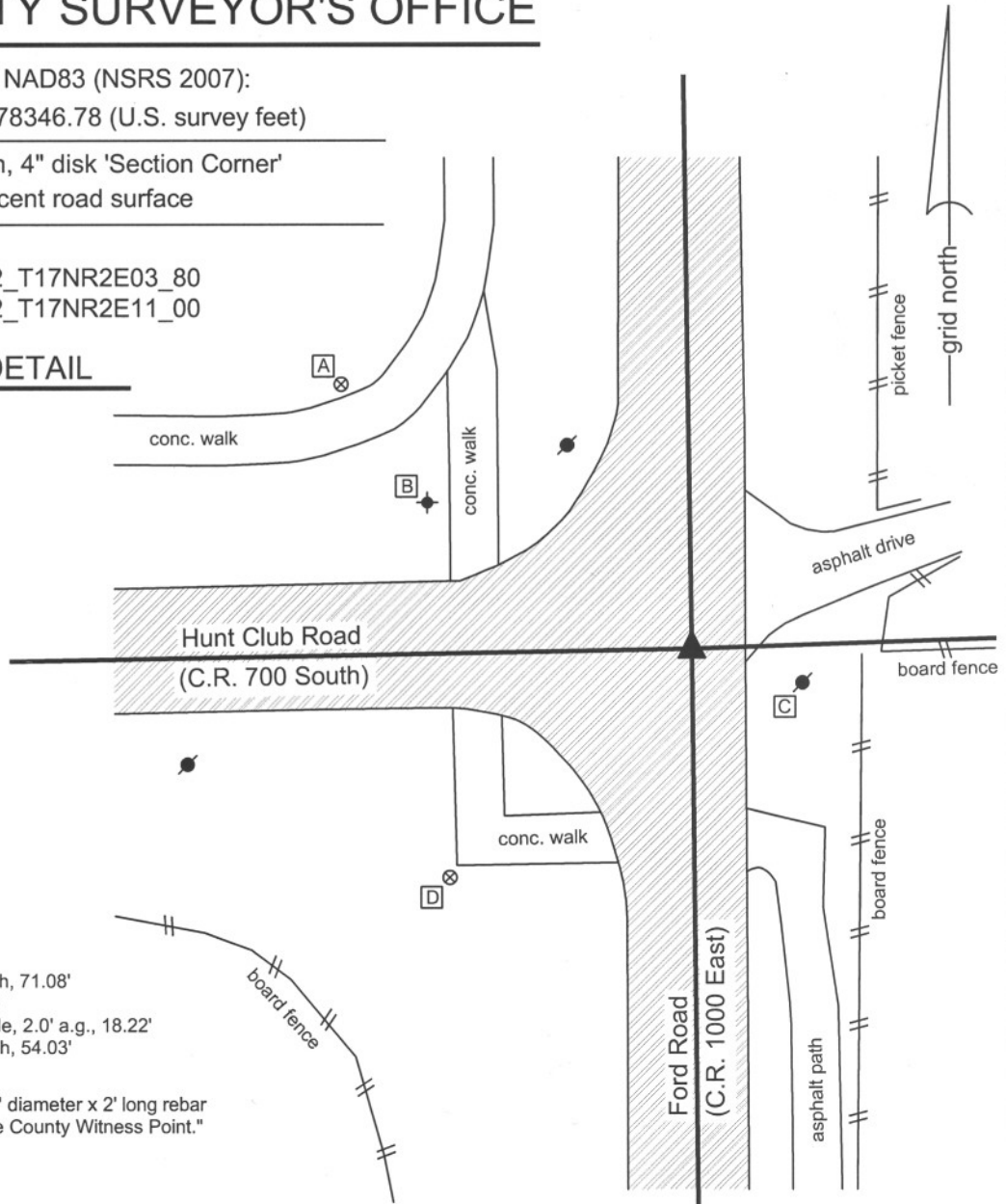
Indiana tie card references:

IN02\_T17NR2E02\_72 IN02\_T17NR2E03\_80

IN02\_T17NR2E10\_08 IN02\_T17NR2E11\_00

### CORNER WITNESS DETAIL

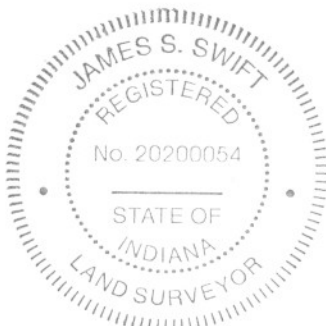
SCALE 1" = 30'



- A - Boone County witness mark, flush, 71.08'
- B - Top SSE bolt, fire hydrant, 48.81'
- C - Mag nail set in W. side power pole, 2.0' a.g., 18.22'
- D - Boone County witness mark, flush, 54.03'

Boone County witness mark is a 3/8" diameter x 2' long rebar bearing a metal cap stamped "Boone County Witness Point."

The harrison monument was set over a railroad rail found and in place of a mag nail found and railroad spike found. No old BCS stone records were found for this corner. A BCS tie card of August 17, 1971 states "found 3' iron pipe, put in RRR." Most recorded surveys and the adjoining and proximate subdivision plats call for a railroad spike found. Some surveys reference a rebar found. Prior to excavation the visible monument was a mag nail at the surface. Excavation revealed the railroad spike, rebar and railroad rail. The railroad spike was found 8 inches deep, below the mag nail, 0.1 foot north and 0.1 foot east of the nail. The railroad rail was found at 14 inches deep, directly below the railroad spike. A 7 inch long rebar was also found, but was disturbed and its position was not firmly established. No other monuments were found in a 3 foot N-S by 3 foot E-W area centered on the mag nail. The railroad rail was left in place and a harrison monument was set directly over the rail in the position of the railroad spike. This corner was originally established as a wood post in late June or early July, 1821.



*Kenneth E. Hedge*  
 Kenneth E. Hedge, County Surveyor

*James S. Swift*  
 James S. Swift, IN LS 20200054

March 11, 2009

Eagle Township

Section 3 T17N, R2E	Section 2 T17N, R2E
Section 10 T17N, R2E	Section 11 T17N, R2E

# SECTION CORNER RECORD

# SE 700-1100

## BOONE COUNTY SURVEYOR'S OFFICE

State Plane grid coordinates NAD83 (NSRS 2007):  
North: 1709788.43 East: 3183649.59 (U.S. survey feet)

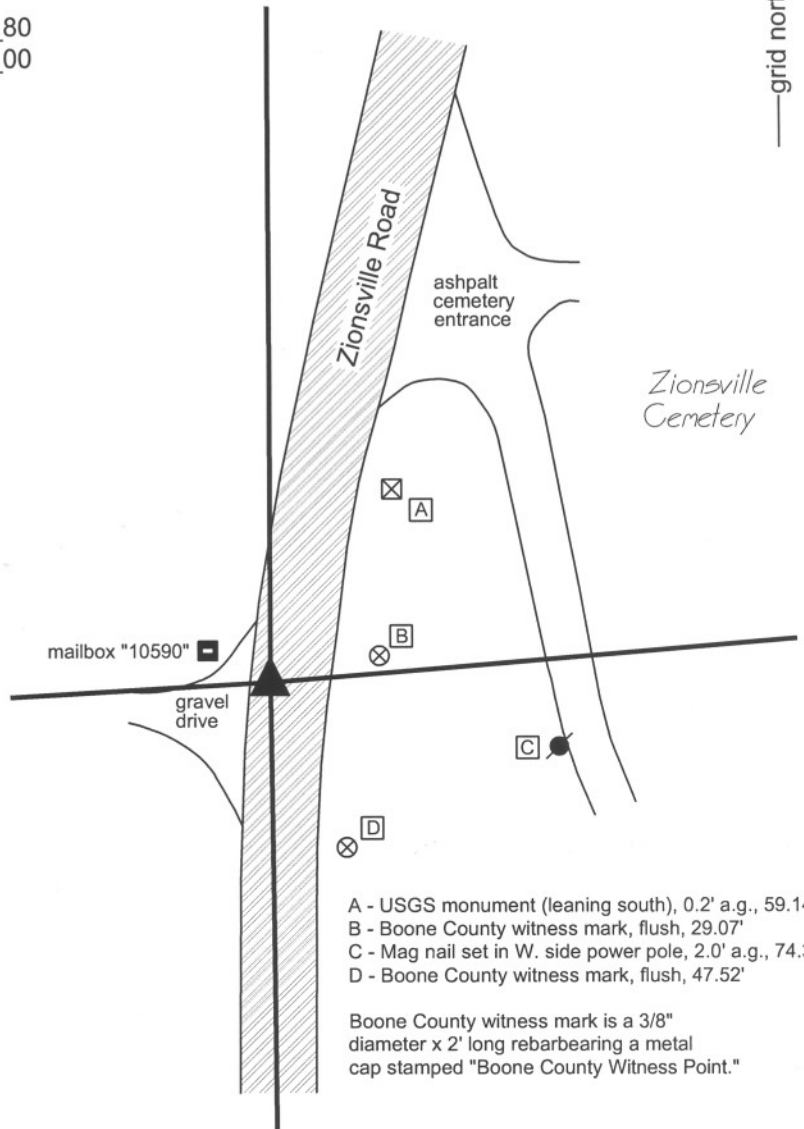
Type of monument: Harrison, 4" disk 'Section Corner'  
Depth: One inch below adjacent road surface

Indiana tie card references:  
IN02\_T17NR2E01\_72 IN02\_T17NR2E02\_80  
IN02\_T17NR2E11\_08 IN02\_T17NR2E12\_00

### CORNER WITNESS DETAIL

SCALE 1" = 50'  
0' 25' 50'

The harrison monument was set in place of a railroad spike found.  
A BCS record of October 18, 1865 states "A Rock tree gone." A BCS record of December 31, 1879 states "Reest. fr. Taylors first tree ... Set Rock 14.13.10 +." The tree reference is to a BCS record of November 14, 1855 which shows the corner witnessed by two Beech trees, but which makes no mention of what monument may have been set or found. A BCS tie card of April 2, 1969 states "no stone, set yellow plate." A BCS tie card of December 9, 1994 shows the corner as a railroad spike with no documentation of source.  
This corner was excavated on July 31, 2009. Prior to excavation a railroad spike was visible in 3 inches deep in a hole in the asphalt. Excavation revealed a copperweld found at 10 inches deep, below the railroad spike. Excavation also revealed a layer of concrete at 10 inches deep. The top of the copperweld was even with the top of the concrete. The concrete layer was under the entire 4 feet by 4 feet area of exavation. Further excavation was not performed as the presence of the concrete indicates the high liklihood of previous grading in preparation for the pouring of the concrete.  
The railroad spike is shown as the corner on all recorded private surveys. The spike and copperweld were held as marking the corner. The harrison monument was set in place of the railroad spike and over the copperweld, which was left in place.  
This corner was originally established as a wood post in late June or early July, 1821.



- A - USGS monument (leaning south), 0.2' a.g., 59.14'
- B - Boone County witness mark, flush, 29.07'
- C - Mag nail set in W. side power pole, 2.0' a.g., 74.3'
- D - Boone County witness mark, flush, 47.52'

Boone County witness mark is a 3/8" diameter x 2' long rebarbearing a metal cap stamped "Boone County Witness Point."



*Kenneth E. Hedge*  
Kenneth E. Hedge, County Surveyor

*James S. Swift*

James S. Swift, IN LS 20200054  
July 14, 2010

Eagle Township

Section 2 T17N, R2E	Section 1 T17N, R2E
Section 11 T17N, R2E	Section 12 T17N, R2E