

SECTION CORNER RECORD

SE 600-400

BOONE COUNTY SURVEYOR'S OFFICE

State Plane grid coordinates NAD83 (NSRS 2007):

North: 1714302.84 East: 3146089.70 (U.S. survey feet) corner 1

North: 1714305.84 East: 3146215.06 (U.S. survey feet) corner 2

Type of monument: Harrison, 4" disk 'Section Corner' (corner 1 only)

Depth: 3 inches above adjacent ground.

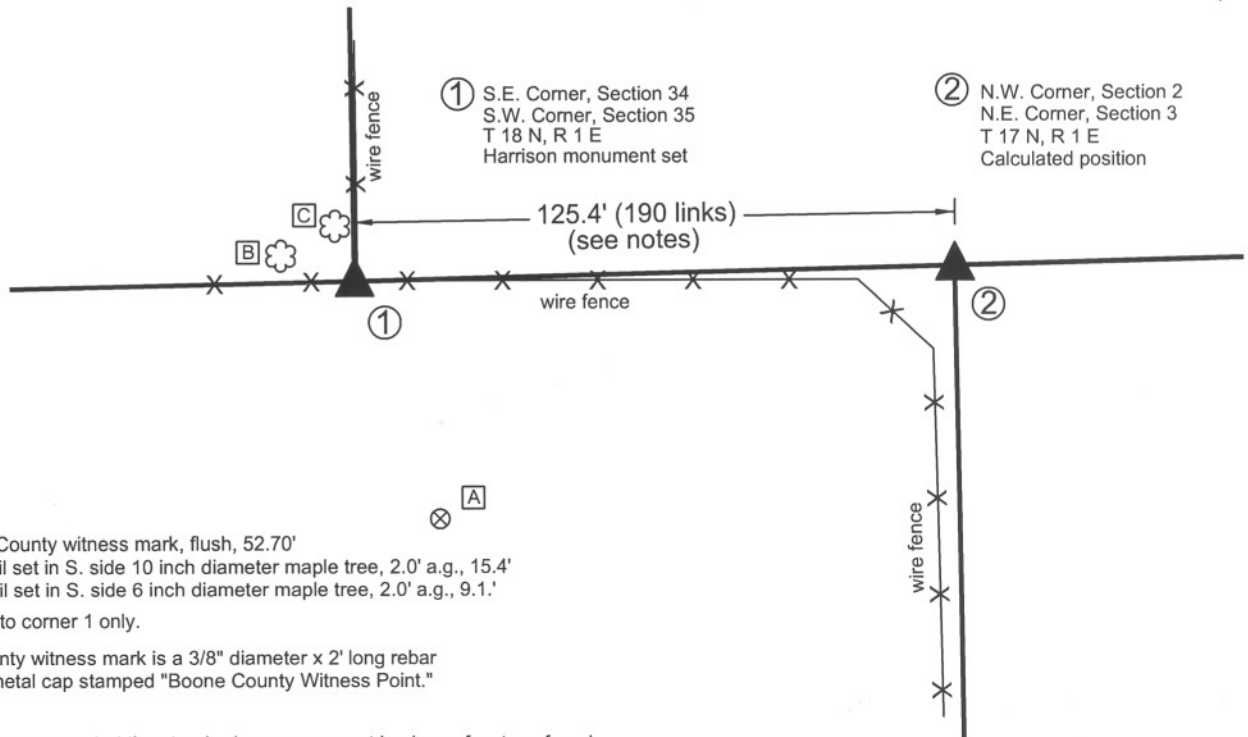
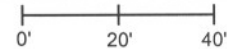
Indiana tie card references:

IN02_T17NR1E02_00 IN02_T17NR1E03_08

IN02_T18NR1E34_80 IN02_T18NR1E35_72

CORNER WITNESS DETAIL

SCALE 1" = 40'



- A - Boone County witness mark, flush, 52.70'
- B - Mag nail set in S. side 10 inch diameter maple tree, 2.0' a.g., 15.4'
- C - Mag nail set in S. side 6 inch diameter maple tree, 2.0' a.g., 9.1.'

All ties are to corner 1 only.

Boone County witness mark is a 3/8" diameter x 2' long rebar bearing a metal cap stamped "Boone County Witness Point."

The harrison monument at the standard corner was set in place of a stone found.

A BCS record of November 14, 1912 states "Re-Est. by measure & intersection. Set rock 17,12,11 +." No recent BCS tie cards were found referencing this corner. The record stone was found buried, with a small portion of the top of the rock exposed, under the E-W fence adjacent to and immediately west of an old corner post at the intersection of fence to the east, west and north. The stone was generally horizontal with a distinct top protruding slightly from the dirt. The stone was removed from its position and measured. The main stone measures the record dimensions of 17x12x11 inches. A small 2 inch protrusion causes a technical maximum dimension of 19 inches, but the main stone is clearly the record dimensions. No specific markings were found on the stone. The surface is quite rough and it is not as clear what might be intentional markings as on smoother surfaced stones. The stones were rolled to the north and the harrison monument was set in the position of the stone as originally found. The closing corner falls on the edge of a lake and no monument was set. The original government notes for this corner state that the corner is 99 links east of the standard corner. However, a record in the BCS Surveyor's Record dated December 2, 1889 states "Found lap as corners are established at 190 links instead of 99 as per Record of original." Establishing the closing corner at 190 links east causes the corner to fall approximately 4 feet east of the northerly prolongation of an old N-S fence. The coordinates shown above for the computed corner hold the 190 link distance, per the 1889 record.

The standard corner was originally established as a wood post in 1819 and the closing corner was established in 1820.



Kenneth E. Hedge
 Kenneth E. Hedge, County Surveyor

James S. Swift
 James S. Swift, IN LS 20200054
 July 14, 2010

Perry Township

Section 34 T18N, R1E	Section 35 T18N, R1E
Section 3 T17N, R1E	Section 2 T17N, R1E

PHOTOGRAPHIC DOCUMENTATION

Date of photography: May 7, 2008 and November 3, 2009

The stone as found and exposed in 2008.



The stone and post in 2009.



The stone and post in 2009.



For details and documentation, refer to related sheet "Section Corner Record."

SECTION CORNER RECORD

BOONE COUNTY SURVEYOR'S OFFICE

SE 600-450

State Plane grid coordinates NAD83 (NSRS 2007):

North: 1714366.43 East: 3148766.31 (U.S. survey feet) corner 1

Type of monument: 5/8 inch rebar with metal cap stamped "Boone County Surveyor"

Depth: 20 inches below adjacent tilled ground.

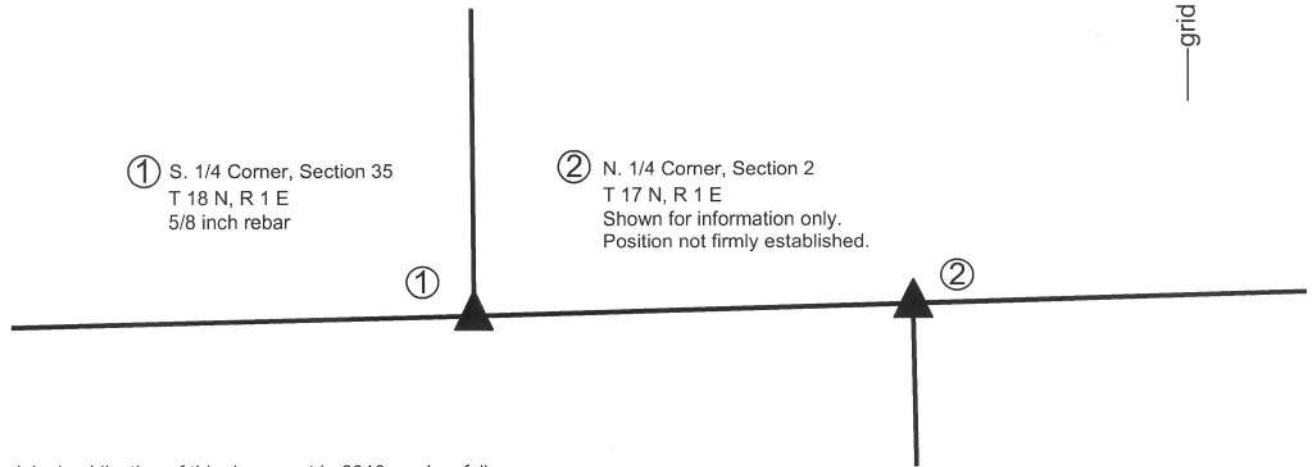
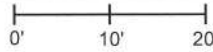
Indiana tie card references:

IN02_T17NR1E02_04

IN02_T18NR1E35_72

CORNER WITNESS DETAIL

SCALE 1" = 20'



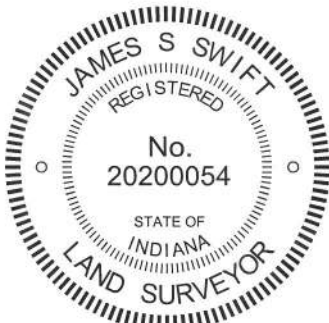
The original publication of this document in 2010 read as follows:

"The rebar was set in place of a rebar found.

The standard corner is not specifically described in the BCS Surveyor's Record beyond the original establishment of the corner in 1819. It is mentioned as the terminal point for a measurements in 1838. The closing corner is referenced in a record of March 16th, 1874 as "A point 70 links East of corner F Section 35." The same record also notes that the northeast corner of the northwest quarter of the northeast corner of section 2 is at a point 55 links east of rock at corner for section 35. This is notable because clearly the 70 links, which is approximately the average of the original closing distances at the respective section corners to the east and west, is held for the offset. However, as noted on the tie card referenced as SE-600-400, the closing distance at the northwest corner of section 2 has been held as 190 links rather than the record 99 links since before 1889. At the subject corner, though, the average of the original record closing distances (99 links at NW corner, section 2 and 40 links at NE corner, section 2) was held in 1874. As the closing corner shown on this document was not established by the original federal surveyors, it was not monumented and is shown for information purposes only.

The rebar is located at the S.W. corner of the base of a wood post. Excavation around the post yielded a large rock on the north side of the post which appears to be a brace rock and does not appear to be a specific corner stone. The rebar has been held as marking the corner by private surveys, including a survey recorded in Survey Book 5, page 50 in the Office of the Boone County Recorder. No references were found holding the post. The rebar was held as marking the corner. The existing rebar was removed and a new 5/8 inch rebar, 36 inches long, topped with a metal cap stamped "Boone County Surveyor" was set in concrete at the same position as the previous rebar. The S.W. corner of the base of the post is 0.25 of a foot N.E. of the rebar. The standard corner was originally established as a wood post in 1819."

On May 28, 2013 the fences to the north and east of corner 1 were removed by crews combining the three adjacent agricultural fields into one. Prior to removal, the position of the corner post and the rebar marking the corner were confirmed. The undersigned LS witnessed the removal of the post and rebar. After they were removed, a hole was excavated and a new 5/8 inch diameter rebar, 36 inches long was set within the hole at the horizontal position of the previous rebar and marked with a metal cap. The work crews then filled in the hole in which the rebar was set and proceeded to grade the area. Hence, the monument is present but buried at approximately 20 inches deep. No distance ties are shown as the corner now falls within a single tilled field.



Kenneth E. Hedge
 Kenneth E. Hedge, County Surveyor

James S. Swift
 James S. Swift, IN LS 20200054

July 14, 2010, Revised February 5, 2015

Eagle Twp



SECTION CORNER RECORD

BOONE COUNTY SURVEYOR'S OFFICE

SE 600-500



State Plane grid coordinates NAD83 (NSRS 2007):

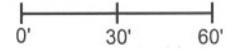
North: 1714436.16 East: 3151447.14 (U.S. survey feet) (standard corner)

North: 1714436.93 East: 3151473.53 (U.S. survey feet) (closing corner)

Type of monument: Harrison, 4" disk 'Section Corner'
 Depth: Approximately 3 inches above adjoining grade.

CORNER WITNESS DETAIL

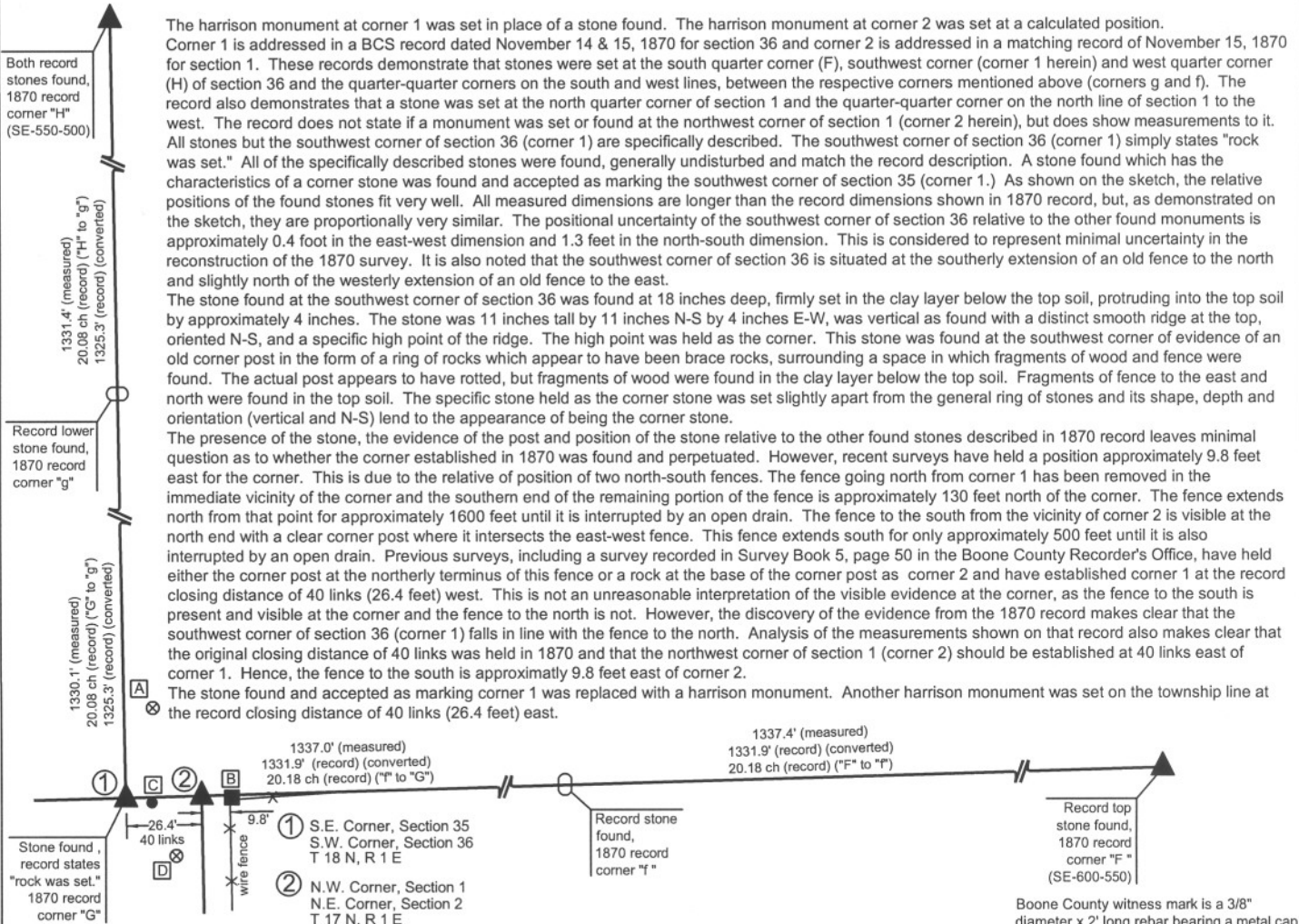
SCALE 1" = 60'



Indiana tie card references:

IN02_T17NR1E01_08 IN02_T17NR1E02_00
 IN02_T18NR1E35_80 IN02_T18NR1E36_72

- A - Boone County witness mark, flush, 32.59' to corner 1, 34.76' to corner 2
- B - Mag nail set in W. side wood post, 2.0' a.g., 36.3' to corner 1, 10.0' to corner 2
- C - 5/8" capped rebar (Dodge), flush, 9.4' to corner 1, 17.2' to corner 2
- D - Boone County witness mark, flush, 26.43' to corner 1, 22.33' to corner 2



The harrison monument at corner 1 was set in place of a stone found. The harrison monument at corner 2 was set at a calculated position. Corner 1 is addressed in a BCS record dated November 14 & 15, 1870 for section 36 and corner 2 is addressed in a matching record of November 15, 1870 for section 1. These records demonstrate that stones were set at the south quarter corner (F), southwest corner (corner 1 herein) and west quarter corner (H) of section 36 and the quarter-quarter corners on the south and west lines, between the respective corners mentioned above (corners g and f). The record also demonstrates that a stone was set at the north quarter corner of section 1 and the quarter-quarter corner on the north line of section 1 to the west. The record does not state if a monument was set or found at the northwest corner of section 1 (corner 2 herein), but does show measurements to it. All stones but the southwest corner of section 36 (corner 1) are specifically described. The southwest corner of section 36 (corner 1) simply states "rock was set." All of the specifically described stones were found, generally undisturbed and match the record description. A stone found which has the characteristics of a corner stone was found and accepted as marking the southwest corner of section 35 (corner 1.) As shown on the sketch, the relative positions of the found stones fit very well. All measured dimensions are longer than the record dimensions shown in 1870 record, but, as demonstrated on the sketch, they are proportionally very similar. The positional uncertainty of the southwest corner of section 36 relative to the other found monuments is approximately 0.4 foot in the east-west dimension and 1.3 feet in the north-south dimension. This is considered to represent minimal uncertainty in the reconstruction of the 1870 survey. It is also noted that the southwest corner of section 36 is situated at the southerly extension of an old fence to the north and slightly north of the westerly extension of an old fence to the east.

The stone found at the southwest corner of section 36 was found at 18 inches deep, firmly set in the clay layer below the top soil, protruding into the top soil by approximately 4 inches. The stone was 11 inches tall by 11 inches N-S by 4 inches E-W, was vertical as found with a distinct smooth ridge at the top, oriented N-S, and a specific high point of the ridge. The high point was held as the corner. This stone was found at the southwest corner of evidence of an old corner post in the form of a ring of rocks which appear to have been brace rocks, surrounding a space in which fragments of wood and fence were found. The actual post appears to have rotted, but fragments of wood were found in the clay layer below the top soil. Fragments of fence to the east and north were found in the top soil. The specific stone held as the corner stone was set slightly apart from the general ring of stones and its shape, depth and orientation (vertical and N-S) lend to the appearance of being the corner stone.

The presence of the stone, the evidence of the post and position of the stone relative to the other found stones described in 1870 record leaves minimal question as to whether the corner established in 1870 was found and perpetuated. However, recent surveys have held a position approximately 9.8 feet east for the corner. This is due to the relative of position of two north-south fences. The fence going north from corner 1 has been removed in the immediate vicinity of the corner and the southern end of the remaining portion of the fence is approximately 130 feet north of the corner. The fence extends north from that point for approximately 1600 feet until it is interrupted by an open drain. The fence to the south from the vicinity of corner 2 is visible at the north end with a clear corner post where it intersects the east-west fence. This fence extends south for only approximately 500 feet until it is also interrupted by an open drain. Previous surveys, including a survey recorded in Survey Book 5, page 50 in the Boone County Recorder's Office, have held either the corner post at the northerly terminus of this fence or a rock at the base of the corner post as corner 2 and have established corner 1 at the record closing distance of 40 links (26.4 feet) west. This is not an unreasonable interpretation of the visible evidence at the corner, as the fence to the south is present and visible at the corner and the fence to the north is not. However, the discovery of the evidence from the 1870 record makes clear that the southwest corner of section 36 (corner 1) falls in line with the fence to the north. Analysis of the measurements shown on that record also makes clear that the original closing distance of 40 links was held in 1870 and that the northwest corner of section 1 (corner 2) should be established at 40 links east of corner 1. Hence, the fence to the south is approximately 9.8 feet east of corner 2.

The stone found and accepted as marking corner 1 was replaced with a harrison monument. Another harrison monument was set on the township line at the record closing distance of 40 links (26.4 feet) east.

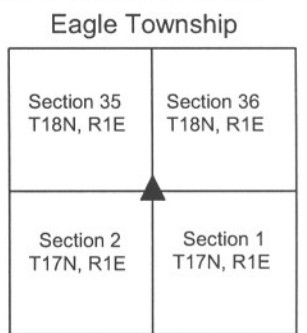
Boone County witness mark is a 3/8" diameter x 2' long rebar bearing a metal cap stamped "Boone County Witness Point."



Kenneth E. Hedge
 Kenneth E. Hedge, County Surveyor

James S. Swift

James S. Swift, IN LS 20200054
 July 14, 2010



PHOTOGRAPHIC DOCUMENTATION

Date of photography: May 22 - June 9, 2009

Corner 1: the hole where evidence of the old corner post was found, with the brace rocks which were removed from the hole.



Corner 1: the stone found and held as marking the corner. View from above with photo oriented showing the distinct N-S ridge and high point. This stone had not yet been found when the photo to the left was taken.



Corner " f ": stone found, described in the 1870 record as "set rock full of seams, white spots, etc."



Corner " g ": Stone found next to corner post. The stone matches the description in the 1870 record as being "5,4,3 1/2 +."



Corner 1: the harrison monument set. View from the north.



Corner 2: the harrison monument set and the corner post 9.8 feet east. View from the N.W.



For details and documentation, refer to related sheet "Section Corner Record."

SECTION CORNER RECORD

SE 650-400

BOONE COUNTY SURVEYOR'S OFFICE

State Plane grid coordinates NAD83 (NSRS 2007):
North: 1711639.58 East: 3146257.42 (U.S. survey feet)

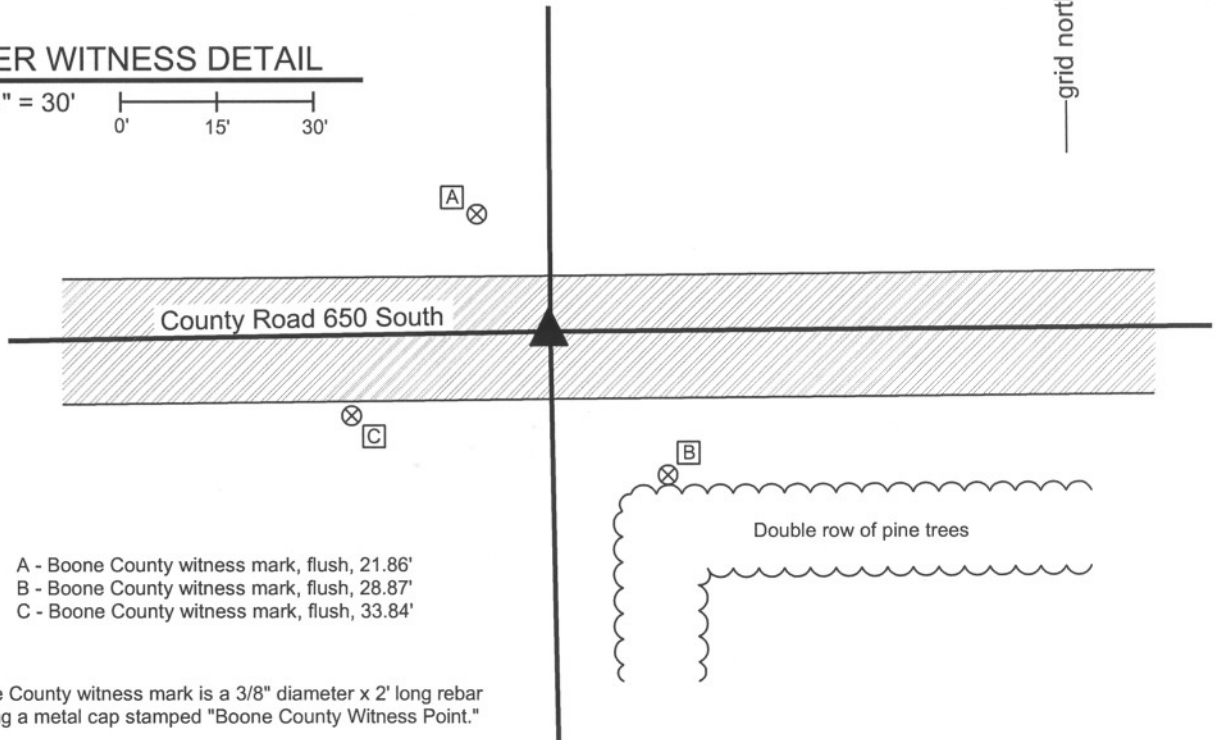
Type of monument: Harrison, 4" disk 'Section Corner'
Depth: One inch below adjacent road surface

Indiana tie card references:
IN02_T17NR1E02_44
IN02_T17NR1E03_36



CORNER WITNESS DETAIL

SCALE 1" = 30'
0' 15' 30'



- A - Boone County witness mark, flush, 21.86'
- B - Boone County witness mark, flush, 28.87'
- C - Boone County witness mark, flush, 33.84'

Boone County witness mark is a 3/8" diameter x 2' long rebar bearing a metal cap stamped "Boone County Witness Point."

The harrison monument was set in place of a P.K. nail and railroad rail found. A BCS record of January 11, 1869 states "Found from Beech stump." A BCS record of March 16, 1874 states "Reestablished from stump of SW Beech. Set a Rock 12,21,6 to 7 + on top and side." No BCS tie cards were found for this corner. However, field notes from April 20, 1970 state "No stone, found iron rod. Set RRR." This corner was excavated on October 27, 2008. Prior to excavation, a P.K. nail was visible at the surface. An area 4 feet N-S by 5 feet E-W was excavated to the clay layer below the road. A railroad spike was found below and slightly west of the P.K. nail. A railroad rail was found at 13 inches deep, below the P.K. nail. No stone was found. As the record stone was not found, the P.K. nail and rail were accepted as the best evidence of the corner and the harrison monument was set in the position of the P.K. nail and railroad rail, both of which were removed during excavation. This corner was originally established as a wood post in June, 1820.

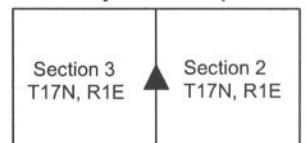


Kenneth E. Hedge
Kenneth E. Hedge, County Surveyor

James S. Swift
James S. Swift, IN LS 20200054

March 11, 2009 Revised July 14, 2010

Perry Township



SECTION CORNER RECORD

SE 650-500

BOONE COUNTY SURVEYOR'S OFFICE

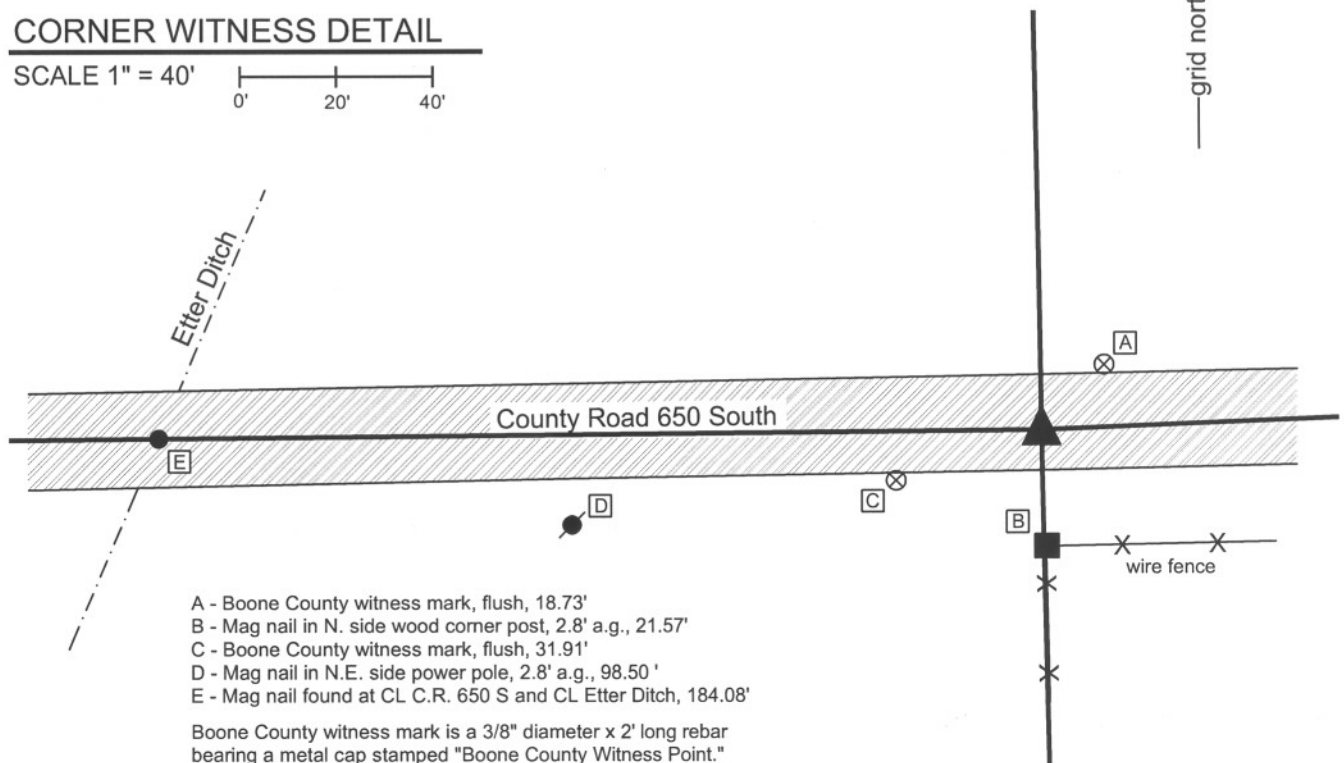
State Plane grid coordinates NAD83 (NSRS 2007):
North: 1711680.47 East: 3151528.73 (U.S. survey feet)

Type of monument: Harrison, 4" disk 'Section Corner'
Depth: One inch below adjacent road surface

Indiana tie card references:
IN02_T17NR1E01_36
IN02_T17NR1E02_44

CORNER WITNESS DETAIL

SCALE 1" = 40'
0' 20' 40'



- A - Boone County witness mark, flush, 18.73'
- B - Mag nail in N. side wood corner post, 2.8' a.g., 21.57'
- C - Boone County witness mark, flush, 31.91'
- D - Mag nail in N.E. side power pole, 2.8' a.g., 98.50'
- E - Mag nail found at CL C.R. 650 S and CL Etter Ditch, 184.08'

Boone County witness mark is a 3/8" diameter x 2' long rebar bearing a metal cap stamped "Boone County Witness Point."

The harrison monument was set in place of a P.K. nail and railroad rail found. A BCS record of September 6, 1901 states "Found stone in center of road, fences indicated corner." A BCS tie card of April 20, 1970 states "found stone" and also demonstrates an "R" adjacent to the corner, likely indicating a railroad rail set. This corner was excavated on October 27, 2009. Prior to excavation, a P.K. nail was visible at the surface of the road. Excavation revealed two small stones in the gravel layer of the road, both below the P.K. Nail, one at 7 inches deep and the other at 10 inches deep. The railroad rail was found at 14 inches deep. No stone was found and it was concluded that the stone was likely removed in 1970 and replaced with the rail, as was a common practice by field crews from this office at that time. The P.K. nail was over the top portion of the rail (i.e. part the train tracks would touch if it were horizontal and in use as an actual railroad rail), rather than the neck (thin portion) of the rail as is commonly seen. The harrison was set in the position of the P.K. Nail, over the rail. This corner was originally established as a wood post in May, 1820.

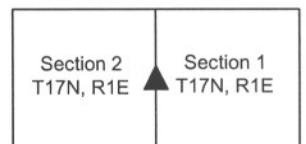


Kenneth E. Hedge
Kenneth E. Hedge, County Surveyor

James S. Swift
James S. Swift, IN LS 20200054

March 11, 2009 Revised July 14, 2010

Perry Township



SECTION CORNER RECORD

SE 700-400

BOONE COUNTY SURVEYOR'S OFFICE

State Plane grid coordinates NAD83 (NSRS 2007):
North: 1708980.17 East: 3146305.02 (U.S. survey feet)

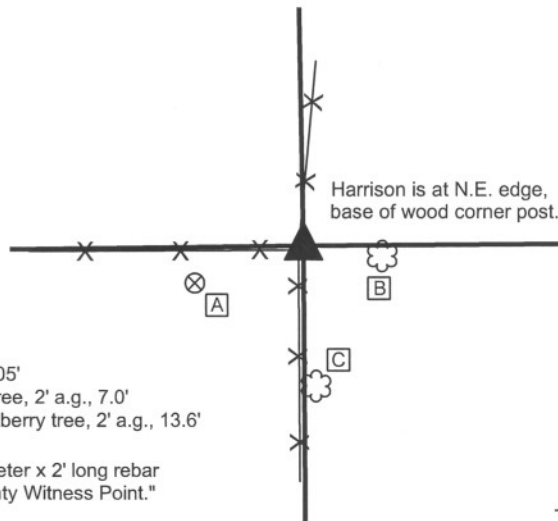
Type of monument: Harrison, 4" disk 'Section Corner'
Depth: Flush with adjoining grade

Indiana tie card references:
IN02_T17NR1E02_72 IN02_T17NR1E03_80
IN02_T17NR1E10_08 IN02_T17NR1E11_00



CORNER WITNESS DETAIL

SCALE 1" = 20'
0' 10' 20'

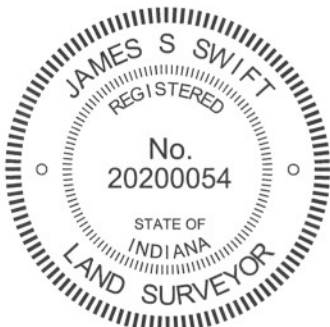


- A - Boone County witness mark, flush, 12.05'
- B - Mag nail set in W. side, 8 inch walnut tree, 2' a.g., 7.0'
- C - Mag nail set in N.W. side, 12 inch hackberry tree, 2' a.g., 13.6'

Boone County witness mark is a 3/8" diameter x 2' long rebar bearing a metal cap stamped "Boone County Witness Point."

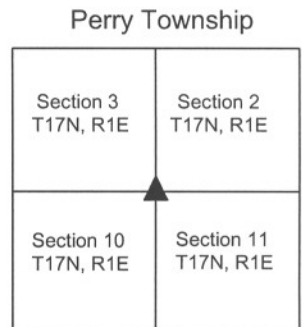
X X X
- denotes wire fence

The harrison monument was set in place of three stones found stacked on top of each other. This corner is not specifically identified the old BCS stone records. It is referenced in measurement records within the BCS stone record with references in 1836, 1866 and 1894. No BCS tie cards were found for this corner. The stones found are at the east edge of the old wood corner post at the intersection of fences to the north, south and west. The top stone is generally of a square shape and was found oriented in cardinal directions. The top of the stone was slightly below the surface of the ground, being at the level of the roots of the grass. The second stone was directly beneath the top stone and the third stone was found directly below the second. The stones did not appear to have the characteristics of brace rocks and did appear to have been intentionally set in a column. The stones were all removed and the harrison monument was set in their place. This corner was originally established as a wood post in June, 1820.



Kenneth E. Hedge
Kenneth E. Hedge, County Surveyor

James S. Swift
James S. Swift, IN LS 20200054
February 27, 2009 Revised July 25, 2011



SECTION CORNER RECORD

SE 700-450

BOONE COUNTY SURVEYOR'S OFFICE

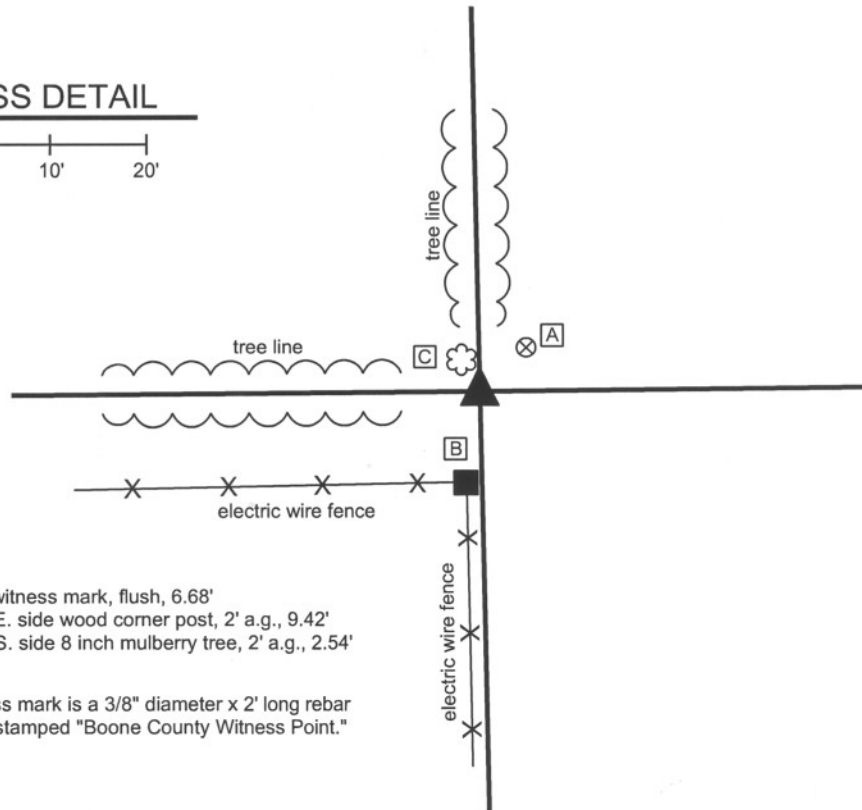
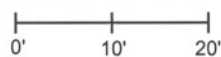
State Plane grid coordinates NAD83 (NSRS 2007):
North: 1708999.93 East: 3148947.77 (U.S. survey feet)

Type of monument: Harrison, 4" disk 'Section Corner'
Depth: 2 inches above adjacent ground in concrete pillar

Indiana tie card references:
IN02_T17NR1E02_76
IN02_T17NR1E11_04

CORNER WITNESS DETAIL

SCALE 1" = 20'



- A - Boone County witness mark, flush, 6.68'
- B - Mag nail set in E. side wood corner post, 2' a.g., 9.42'
- C - Mag nail set in S. side 8 inch mulberry tree, 2' a.g., 2.54'

Boone County witness mark is a 3/8" diameter x 2' long rebar bearing a metal cap stamped "Boone County Witness Point."

The harrison monument was set in the position of a stone found. A BCS record of April 9, 1866 states "Rock 24,15,6 marked +." No BCS tie cards were found for this corner. A survey recorded as Instrument 200700002138 holds the remains of a cedar post as the corner, noting that several non-descript stones were found nearby. The record stone was found broken into two parts. The main part, being the bottom 15 inches, was found on the ground at the east edge of a large granite slab. The smaller part, being the top 9 inches was found slightly northeast, buried just below the grass. The etched "+" is clearly visible on the top part of the stone. The orientation of the two parts indicated that the main section was generally in the position it would have been had the stone fallen over and broken and the top part not moved after breaking away from the bottom part. The main part of the stone falls at the intersection of the old tree lines to the north and west. Remnants of the base of an old cedar post were found approximately 1 foot southeast of the main part of the stone. This fits with a pattern detected at other corners wherein the old post is set adjacent to the record stone. The harrison monument was set in the position of the main part of the stone as found. The two parts of the stone were removed and are on display in the Boone County Surveyor's Office. This corner was originally established as a wood post in June, 1820.



Kenneth E. Hedge
Kenneth E. Hedge, County Surveyor

James S. Swift
James S. Swift, IN LS 20200054

March 11, 2009 Revised July 14, 2010

Perry Twp

Section 2
T17N, R1E

Section 11
T17N, R1E

PHOTOGRAPHIC DOCUMENTATION

Date of photography: April 18, 2008

Stone hunter Junior Franklin holds the two pieces of the record stone found. The bottom portion was lying upon the ground and the top portion was shallowly buried, slightly to the northeast.



A closer view of the two portions of the stone.



A closer view yet. Note the etched cross on the top portion of the stone. Both portions of the stone were removed and are on display in the Boone County Surveyor's Office.



For details and documentation, refer to related sheet "Section Corner Record."

SECTION CORNER RECORD

SE 700-500

BOONE COUNTY SURVEYOR'S OFFICE

State Plane grid coordinates NAD83 (NSRS 2007):

North: 1709024.83 East: 3151584.84 (U.S. survey feet)

Type of monument: Harrison, 4" disk 'Section Corner'

Depth: 2 inches above adjoining ground in concrete pillar

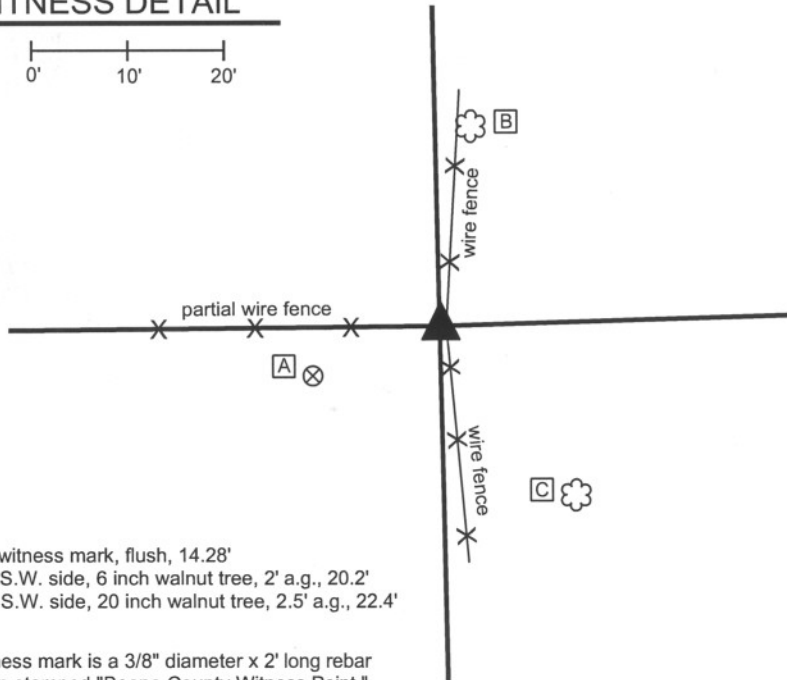
Indiana tie card references:

IN02_T17NR1E01_72 IN02_T17NR1E02_80

IN02_T17NR1E11_08 IN02_T17NR1E12_00

CORNER WITNESS DETAIL

SCALE 1" = 20'



- A - Boone County witness mark, flush, 14.28'
- B - Mag nail set in S.W. side, 6 inch walnut tree, 2' a.g., 20.2'
- C - Mag nail set in S.W. side, 20 inch walnut tree, 2.5' a.g., 22.4'

Boone County witness mark is a 3/8" diameter x 2' long rebar bearing a metal cap stamped "Boone County Witness Point."

The harrison monument was set in place of the base of an old cedar corner post found.

A BCS record of March 11, 1915 states "Found Rock at Corner." No BCS tie cards were found for this corner. An old, round, wood corner post is visible at the intersection of fences to the North, South and West. The base of an older, 6 inch by 6 inch cedar post was found immediately west of this post. A small rock, measuring approximately 6x3x4 inches was found against the west edge of the base of the old cedar post. No other rocks were found in the immediate vicinity of this corner. The base of the cedar post was accepted as the best available evidence of the original location of the corner. The post was partially removed and the harrison monument was set in the position of the post.

This corner was originally established as a wood post in May, 1820.



Kenneth E. Hedge
Kenneth E. Hedge, County Surveyor

James S. Swift

James S. Swift, IN LS 20200054

March 11, 2009, Revised July 14, 2010

Perry Township

Section 2 T17N, R1E	Section 1 T17N, R1E
Section 11 T17N, R1E	Section 12 T17N, R1E

PHOTOGRAPHIC DOCUMENTATION

Date of photography: April 28, 2008

Base of old cedar post exposed.
View from northwest.



Current corner post and base of old cedar post.
View from southwest.



For details and documentation, refer to
related sheet "Section Corner Record."