

# SECTION CORNER RECORD

NE 500-1100

## BOONE COUNTY SURVEYOR'S OFFICE

State Plane grid coordinates NAD83 (NSRS 2007):

North: 1773226.98 East: 3182760.89 (U.S. survey feet)

Type of monument: 1 inch diameter iron pin in concrete

Depth: flush with adjacent road surface

Indiana tie card references:

IN02\_T19NR2E02\_80

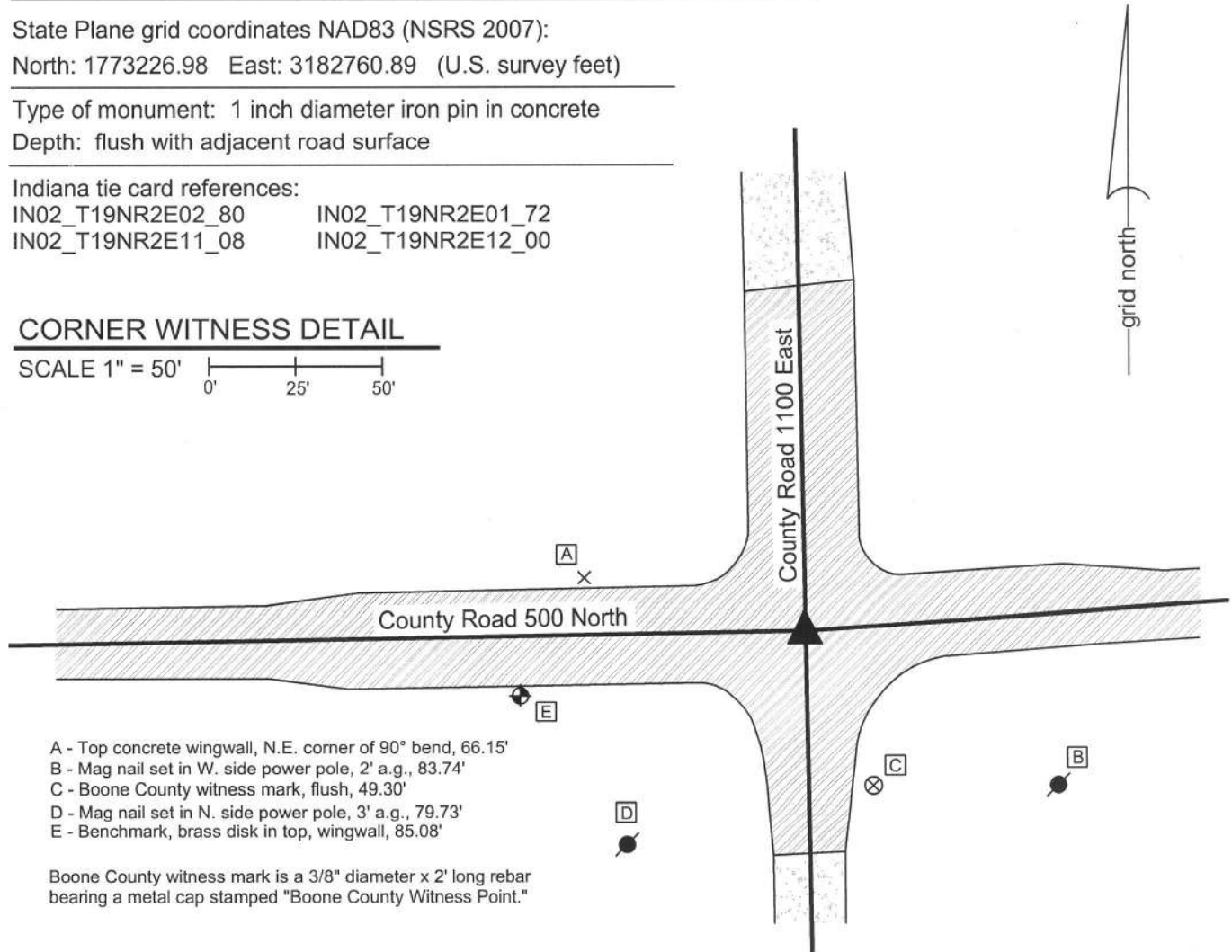
IN02\_T19NR2E01\_72

IN02\_T19NR2E11\_08

IN02\_T19NR2E12\_00

### CORNER WITNESS DETAIL

SCALE 1" = 50'



- A - Top concrete wingwall, N.E. corner of 90° bend, 66.15'
- B - Mag nail set in W. side power pole, 2' a.g., 83.74'
- C - Boone County witness mark, flush, 49.30'
- D - Mag nail set in N. side power pole, 3' a.g., 79.73'
- E - Benchmark, brass disk in top, wingwall, 85.08'

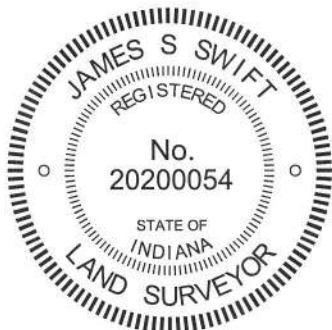
Boone County witness mark is a 3/8" diameter x 2' long rebar bearing a metal cap stamped "Boone County Witness Point."

A harrison monument was set over a stone found in the spring of 2011. The iron pin was set by others, in place of the harrison monument in the spring of 2012 as part of a bridge construction project.

A BCS record of September 23, 1870 states "Reestablished from a rock set where I drove stake when surveying the road. Marked rock that was there and set on top 16.14.12 +." A BCS tie card dated June, 1970 states "found stone. Replace top with Rail, bottom still in place."

This corner was excavated on April 13, 2011. Prior to excavation a section of railroad rail, evidently leaning towards the south, was found in a hole in the asphalt with a 5/8 inch diameter rebar on the east edge of the rail. The rail and rebar were removed and a stone was found at 34 inches deep. The stone is of an odd shape on top, being total of 8 inches N-S by 8 inches E-W, but being in the form of a "T" with a 5 inch arm oriented towards the north. An etched + was clearly visible, situated at the intersection of the N-S arm with the E-W arm. The height of the stone was not measured. As found, the rail was leaning south. Measurements indicated that the bottom of the rail had been below the level of the top of the stone, likely touching it on the north side and the top of the rail was 4 inches south of the etched + mark on the stone. The + mark of the stone was held as marking the corner. The stone was left in place and the harrison monument was set over the etched +. Subsequently the culverts to the immediate north and west of the corner were replaced and the harrison monument was removed during reconstruction of the intersection. The harrison was replaced in the same position by the 1 inch diameter iron pin. It is not documented whether the stone was left in place.

This corner was originally established as a wood post in June, 1821.



*Kenneth E. Hedge*  
 Kenneth E. Hedge, County Surveyor

*James S. Swift*  
 James S. Swift, IN LS 20200054  
 February 6, 2013

Marion Township

|                         |                         |
|-------------------------|-------------------------|
| Section 2<br>T19N, R2E  | Section 1<br>T19N, R2E  |
| Section 11<br>T19N, R1E | Section 12<br>T19N, R2E |

PHOTOGRAPHIC DOCUMENTATION

Date of photography: April 13, 2011

View of the top of the railroad rail as found.



The stone found at 34 inches deep.



The stone found at 34 inches deep.



Close-up of the stone found. Note the etched + at the "T" intersection of the two parts of the stone.



For details and documentation, refer to related sheet "Section Corner Record."

# SECTION CORNER RECORD

NE 500-1150

## BOONE COUNTY SURVEYOR'S OFFICE

State Plane grid coordinates NAD83 (NSRS 2007):

North: 1773405.70 East: 3185457.32 (U.S. survey feet)

Type of monument: Harrison, 4" disk 'Section Corner'

Depth: One inch below adjacent road surface

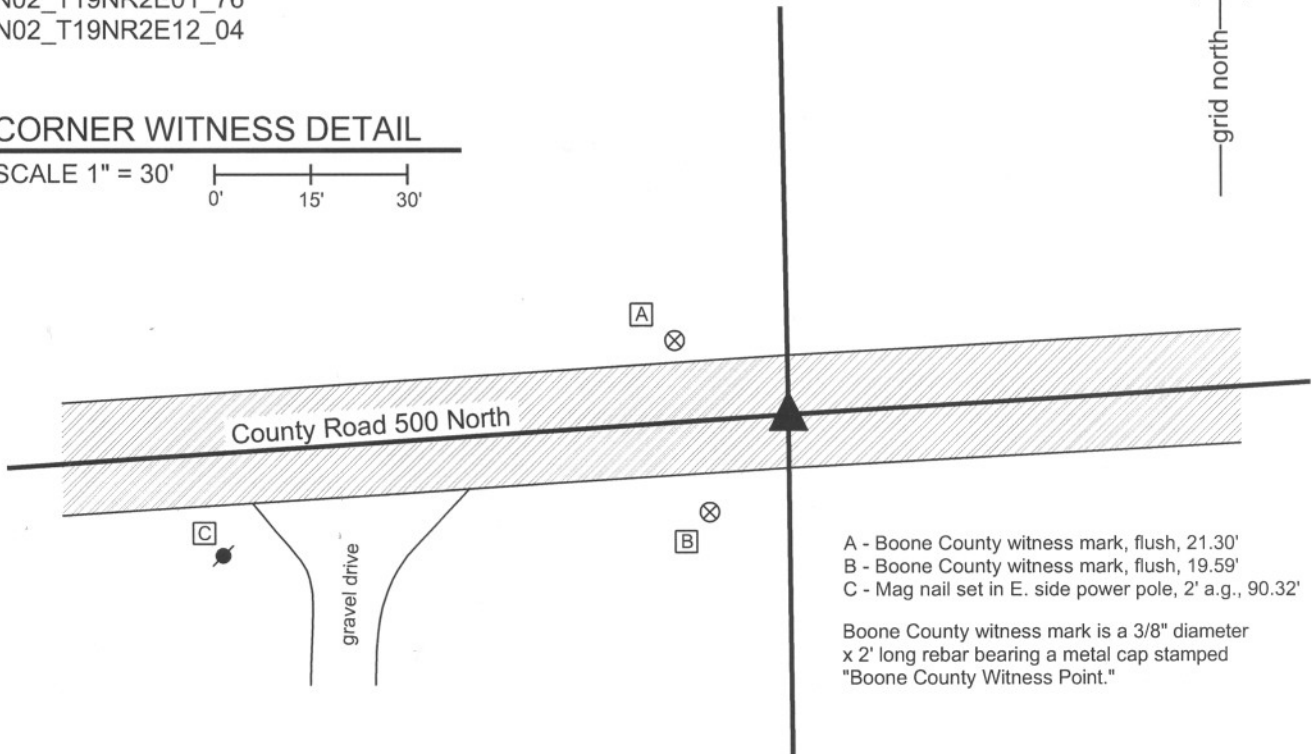
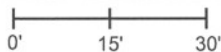
Indiana tie card references:

IN02\_T19NR2E01\_76

IN02\_T19NR2E12\_04

### CORNER WITNESS DETAIL

SCALE 1" = 30'

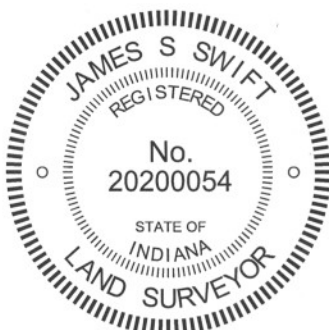


- A - Boone County witness mark, flush, 21.30'
- B - Boone County witness mark, flush, 19.59'
- C - Mag nail set in E. side power pole, 2' a.g., 90.32'

Boone County witness mark is a 3/8" diameter x 2' long rebar bearing a metal cap stamped "Boone County Witness Point."

The harrison monument was set in place of a stone and a section of railroad rail found.

A BCS record of September 23, 1870 states "Reestablished from stumps of trees. Set two Rocks One 13.10.6 +. Top One 14.8.7 +." BCS field notes dated June, 1970 for which no tie card was found state "Found stone set rail." A BCS tie card dated June 19, 1974 states "Found Stone & Rail." This corner was excavated on September 27, 2011. Prior to excavation a section of railroad rail was found at 12 inches deep in a hole in the asphalt. The rail appeared to be leaning north. Excavation revealed a stone found at 27 inches deep. The rail was extended over the west edge of the center of the rock. The stone appeared to be knocked over. The stone was removed and measured to be 14 inches by 10 inches by 8 inches. As stood up, it would have been 14 inches tall. The stone does not precisely match the dimensions of either rock described in the 1870 record though is close to the dimensions of the record lower stone. No specific markings were identified on the rock. No other evidence of the corner was found in a 4 foot by 4 foot square hole centered on the top of the rail as found. The stone and railroad rail were both removed and a harrison monument was set in the position of the top of the rail as originally found, slightly west of the top, center of the found stone. This corner was originally established as a wood post in June, 2011



*Kenneth E. Hedge*  
Kenneth E. Hedge, County Surveyor

*James S. Swift*  
James S. Swift, IN LS 20200054  
March 1, 2012

Marion Twp

Section 1  
T19N, R2E

Section 12  
T19N, R2E



PHOTOGRAPHIC DOCUMENTATION

Date of photography: April 13, 2011

View of the railroad rail, as found.



View of the stone as first exposed.



View of the stone more fully exposed.



View of the stone removed from the road bed.



For details and documentation, refer to related sheet "Section Corner Record."

# SECTION CORNER RECORD

## BOONE COUNTY SURVEYOR'S OFFICE

NE 500-1200

State Plane grid coordinates NAD83 (CORS96):

North: 1773569.68 East: 3188150.52 (U.S. survey feet) Corner 1

North: 1773472.93 East: 3188153.23 (U.S. survey feet) Corner 2

Type of monument: Harrison, 4" disk 'Section Corner'

Depth: One inch below adjacent road surface (Corner 1) Flush (Corner 2)

Indiana tie card references:

IN02\_T19NR2E01\_80 IN02\_T19NR3E06\_72

IN02\_T19NR2E12\_08 IN02\_T19NR3E07\_00

### CORNER WITNESS DETAIL

SCALE 1" = 50'

- A - Boone County witness mark, flush, 30.59' to corner 1, 117.14' to corner 2
- B - Mag nail in S. side power pole, 2' a.g., 60.74' to corner 1, 156.80' to corner 2
- C - Boone County witness mark, flush, 65.31' to corner 1, 43.01' to corner 2
- D - Mag nail in N. side power pole, 2' a.g., 124.95' to corner 1, 57.48' to corner 2
- E - Mag nail in E. side power pole, 2' a.g., 60.74' to corner 1, 38.77' to corner 2

Boone County witness mark is a 3/8" diameter x 2' long rebar bearing a metal cap stamped "Boone County Witness Point."

The harrison monument at corner 1 was set over a stone found. The harrison monument at corner 2 was found present and left undisturbed.

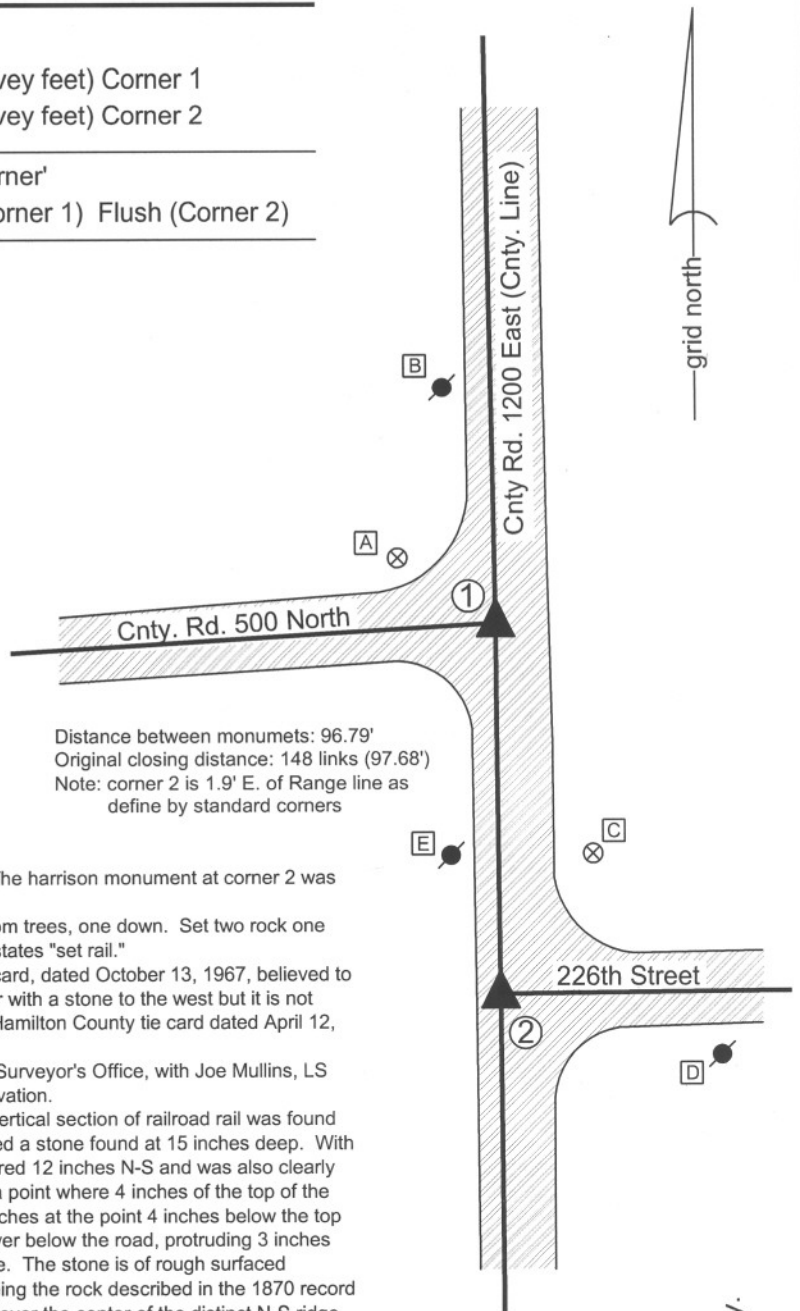
A BCS record of September 21-22, 1870 states "Reestablished from trees, one down. Set two rock one 7.6.5 + Top one 19.12.6 +." A BCS tie card dated June 19, 1974 states "set rail."

A BCS tie card dated June 19, 1974 states "set rail." Another tie card, dated October 13, 1967, believed to originate in the Hamilton County Surveyor's Office, shows a corner with a stone to the west but it is not clear which of the two corners is the subject of this document. A Hamilton County tie card dated April 12, 2004 states "Harrison set at surface over rebar."

Corner 1 was excavated in cooperation with the Hamilton County Surveyor's Office, with Joe Mullins, LS and other representatives of that office present at the time of excavation.

Corner 1 was excavated on July 23, 2012. Prior to excavation a vertical section of railroad rail was found at 8 inches deep in a large hole in the asphalt. Excavation revealed a stone found at 15 inches deep. With 12 inches of the stone exposed on the east side, the stone measured 12 inches N-S and was also clearly taller. The east-west dimension was measured to be 5 inches at a point where 4 inches of the top of the stone were exposed. It is noted that the N-S dimension was 10 inches at the point 4 inches below the top of the stone. The stone was vertical and embedded in the clay layer below the road, protruding 3 inches into the bottom of the road bed. The stone has a distinct N-S ridge. The stone is of rough surfaced material and no specific marks were found. It was accepted as being the rock described in the 1870 record and held as marking the corner. The harrison monument was set over the center of the distinct N-S ridge. The railroad rail, removed during excavation, had been 2.7 feet east and 1.1 foot north of the stone.

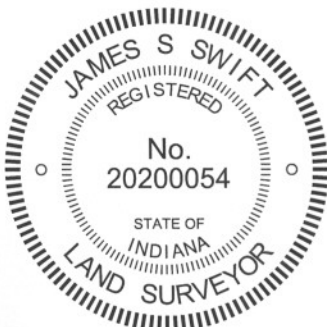
The harrison monument at the Hamilton County corner is 1.9 feet east of the range line as defined by the standard corners. The Hamilton County Surveyor's Office opted to leave the monument undisturbed and not excavate for additional evidence.



Distance between monuments: 96.79'  
Original closing distance: 148 links (97.68')  
Note: corner 2 is 1.9' E. of Range line as define by standard corners

Marion Twp.  
Boone Cnty.

Adams Twp.  
Hamilton Cnty.



*Kenneth E. Hedge*  
Kenneth E. Hedge, County Surveyor

*James S. Swift*  
James S. Swift, IN LS 20200054  
January 15, 2013

|                         |                        |
|-------------------------|------------------------|
| Section 1<br>T19N, R2E  | Section 6<br>T19N, R3E |
| Section 12<br>T19N, R2E | Section 7<br>T19N, R3E |



PHOTOGRAPHIC DOCUMENTATION

Date of photography: July 23, 2012

View of the stone as first exposed.



View of the stone from the east.



View of the stone from above.



View of the stone from above and south.



The stone and area of excavation from the north.



The stone and area of excavation from the east.



For details and documentation, refer to related sheet "Section Corner Record."

# SECTION CORNER RECORD

## BOONE COUNTY SURVEYOR'S OFFICE

NE 550-1100

State Plane grid coordinates NAD83 (NSRS 2007):  
 North: 1775878.38 East: 3182711.94 (U.S. survey feet)

Type of monument: Harrison, 4" disk 'Section Corner'  
 Depth: six inches below adjacent gravel road surface

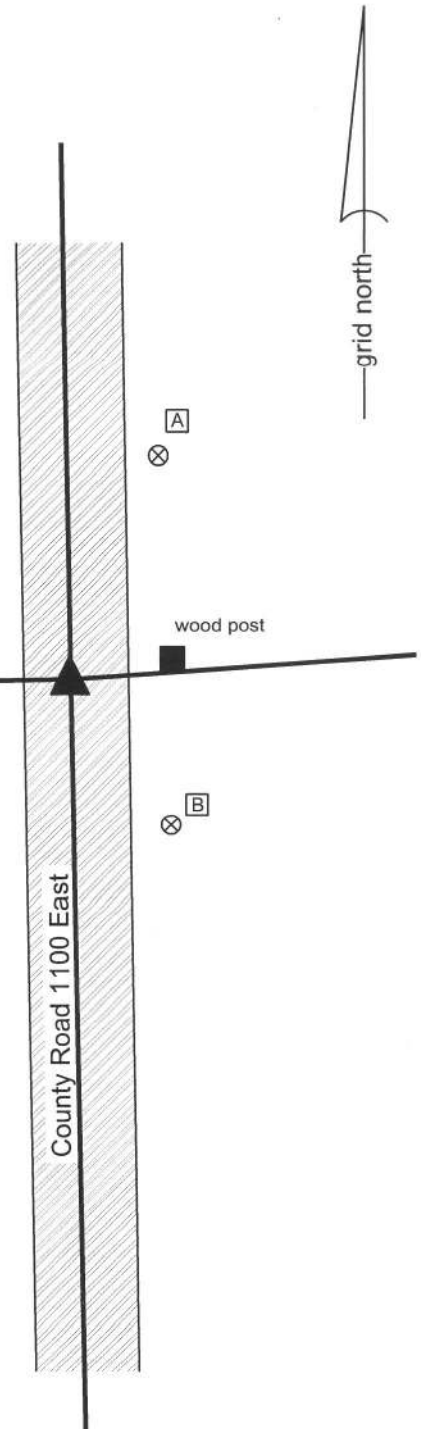
Indiana tie card references:  
 IN02\_T19NR2E02\_44  
 IN02\_T19NR2E01\_36

### CORNER WITNESS DETAIL

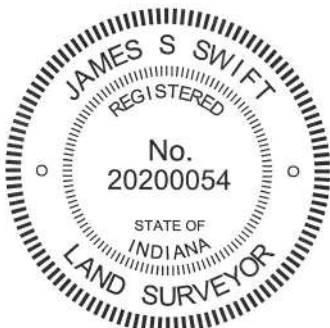
SCALE 1" = 30'

- A - Boone County witness mark, flush, 37.45'
- B - Boone County witness mark, flush, 27.38'
- C - Boone County witness mark, flush, 22.53'

Boone County witness mark is a 3/8" diameter x 2' long rebar bearing a metal cap stamped "Boone County Witness Point."



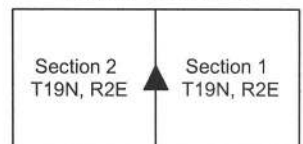
The harrison monument was set over a stone found.  
 A BCS record of September 21-22, 1870 states "Reest from intersection of lines from West with Sect. line and some roots on one tree. Set a Rock 7.7.3 +. Top Rock 14.10-8 +." No recent BCS tie cards were found referencing this corner.  
 This corner was excavated on November 15, 2011. Prior to excavation a 5/8 inch diameter rebar was found at 4 inches deep in the gravel road. No documentation was found associated with this rebar. Excavation revealed both of the stones described in the 1870 record along with another, larger rock adjacent to and south of the record stone. The top stone described in the 1870 record was found at 8 inches deep. As found, it appeared to have been knocked over from the south and was on its side. The stone was removed and was found to measure 15 inches by 10 inches by 8 inches with a distinct etched +. As found, the etched + was at the north edge of the stone. As stood up, the stone was vertical and the etched + was on the top. The record lower stone was found directly below this stone, measuring approximately 8 inches N-S by 7 inches E-W by 3 1/2 inches tall with a distinct etched + on the top center. This stone did not appear to be disturbed. A larger rock, measuring 11 inches N-S by 24 inches E-W by 11 inches tall, as measured on the N. edge, was found immediately north of the record stones. This rock was at 16 inches deep and appeared to be acting as a brace for the record top stone. The top of the record lower stone was at 18 inches deep. The top of the record top stone, if vertical, would have been approximately 3 inches deep. It is not surprsing, therefore, that the stone might have been hit by the blade of a road grader and knocked over. The record lower stone and the large, apparent brace rock were both left in place and a harrison monument was set directly over the etched + on the lower stone.  
 The rebar, removed during excavation, had been 3.6 feet north of the etched + on the lower stone.  
 This corner was originally established as a wood post in June, 1821.



*Kenneth E. Hedge*  
 Kenneth E. Hedge, County Surveyor

*James S. Swift*  
 James S. Swift, IN LS 20200054  
 March 1, 2012, Revised March 7, 2013

Marion Township





PHOTOGRAPHIC DOCUMENTATION

Date of photography: November 15, 2011

View of the upper record stone as first exposed, evidently lying on its side with the original top of the stone to the north (left in this picture).



The upper record stone, removed from the road bed and placed in the orientation in which it was likely set in 1861, with the etched + on top.



The lower record stone and the large "brace" rock to the south. Note the distinct etched + mark on the top of the lower record stone.



Similar picture to the left, from a different angle and showing the record stone more fully exposed.



For details and documentation, refer to related sheet "Section Corner Record."