

# SECTION CORNER RECORD

SE 050-1100

## BOONE COUNTY SURVEYOR'S OFFICE

State Plane grid coordinates NAD83 (NSRS 2007):  
 North: 1744417.89 East: 3183267.93 (U.S. survey feet)

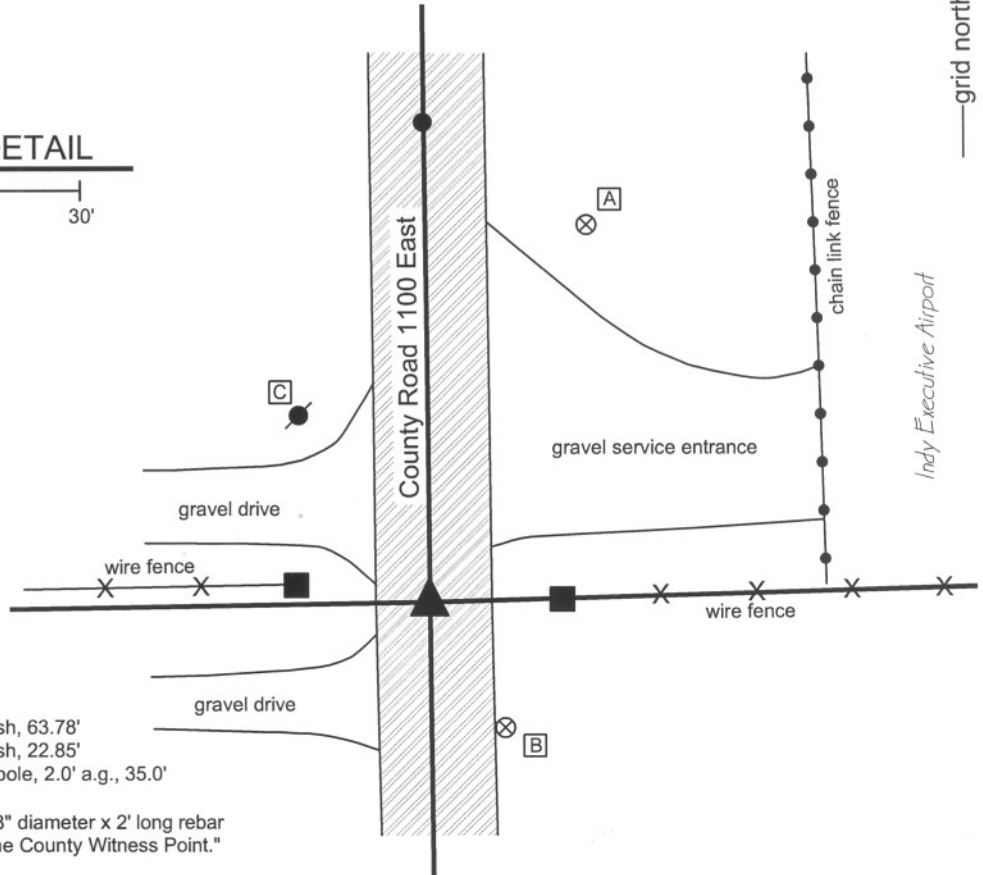
Type of monument: Harrison, 4" disk 'Section Corner'  
 Depth: One inch below adjacent road surface

Indiana tie card references:  
 IN02\_T18NR2E01\_36  
 IN02\_T18NR2E02\_44



### CORNER WITNESS DETAIL

SCALE 1" = 30'  
 0' 15' 30'



- A - Boone County witness mark, flush, 63.78'
- B - Boone County witness mark, flush, 22.85'
- C - Mag nail set in S.E. side power pole, 2.0' a.g., 35.0'

Boone County witness mark is a 3/8" diameter x 2' long rebar bearing a metal cap stamped "Boone County Witness Point."

The harrison monument was set in place of a bolt spike over a stone found.  
 A BCS tie card dated May 30, 1991 shows the corner as a bolt spike. This tie card also shows a rebar 3.2 feet north of the spike. No specific records of the corner were found in the BCS Surveyor's Record, though the corner is depicted as the terminal point for measurements in 1834, 1837 and 1897. This corner was excavated on May 14, 2009. Prior to excavation the bolt spike and the rebar shown on the 1991 tie card were visible. The bolt spike was 2 inches below the adjacent pavement and the rebar was flush with the pavement. A stone was found at 11 inches deep measuring 6 inches E-W by 5 inches N-S with the top 6 inches of the stone exposed. The stone is well embedded in the clay layer below the road and protrudes approximately 4 inches out of the clay into the base layer of the road. With 6 inches exposed the stone remained entirely stable in the clay. The stone was left in place and the total height was not measured. An etched "+" is visible on the top of the stone. Prior to exposing the stone the bolt spike had been removed but it was apparent that the bolt spike had been driven along the west edge of the stone at an angle and leaning over the top of the stone. The harrison monument was set in the position of the bolt spike, over the west side of the top of the stone, 0.15 foot west of the etched "+" on top of the stone. This corner was originally established as a wood post in July, 1821.



*Kenneth E. Hedge*  
 Kenneth E. Hedge, County Surveyor

*James S. Swift*  
 James S. Swift, IN LS 20200054  
 July 14, 2010

Union Township

Section 2 T18N, R2E	Section 1 T18N, R2E
------------------------	------------------------

PHOTOGRAPHIC DOCUMENTATION

Date of photography: May 14, 2009

View of the stone as first exposed.



View of the stone from above, wetted, showing the etched + on the top of the stone.



View from the north, looking across the stone and south along County Road 1100 East.



View from the west, looking across the stone and east along the old fence.



For details and documentation, refer to related sheet "Section Corner Record."

# SECTION CORNER RECORD

SE 050-1200

## BOONE COUNTY SURVEYOR'S OFFICE

State Plane grid coordinates NAD83 (NSRS 2007):

North: 1744566.81 East: 3188531.86 (U.S. survey feet)

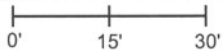
Type of monument: Harrison, 4" disk 'Section Corner'

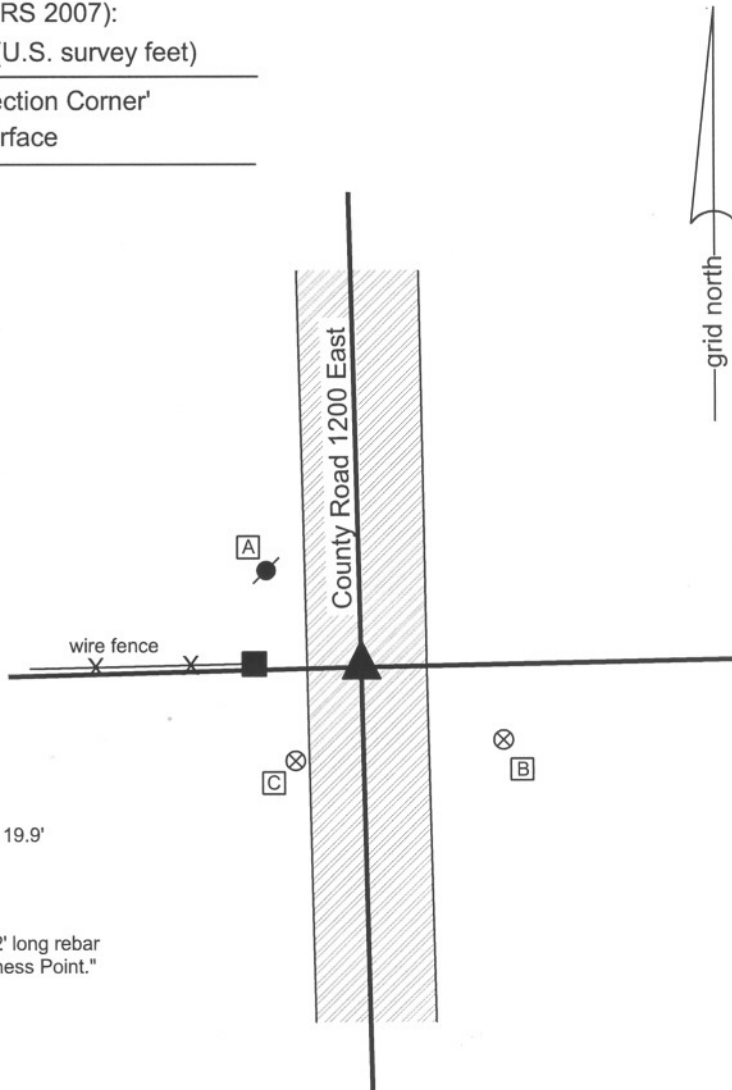
Depth: One inch below adjacent road surface

Indiana tie card references:

IN02\_T18NR2E01\_44

### CORNER WITNESS DETAIL

SCALE 1" = 30' 



- A - mag nail set in S.E. side power pole, 2.0' a.g., 19.9'
- B - Boone County witness mark, flush, 24.84'
- C - Boone County witness mark, flush, 17.86'

Boone County witness mark is a 3/8" diameter x 2' long rebar bearing a metal cap stamped "Boone County Witness Point."

The harrison monument was set in place of a bolt spike found and over a stone found.

A Hamilton County Surveyor's Office tie card dated 1966 shows the corner as a stone found. The corner is not specifically described in the BCS Surveyor's Record, though it is depicted as a terminal point for measurements in 1837, 1861 and 1892.

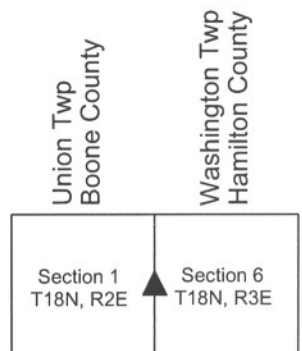
This corner was excavated on August 18, 2009 with Joe Mullins, LS of the Hamilton County Surveyor's Office present and participating. Prior to excavation a bolt spike was found flush with the asphalt pavement. The spike was removed and a stone was found at 10 inches deep directly below the spike. A distinct etched "+" was visible on the top of the stone. The bolt spike had been approximately over this mark. It appears that the bolt spike had been set by distance ties shown on the 1966 tie card. The top of the stone is 12 inches E-W by 10 inches N-S. The height of the stone was not measured. The harrison monument was truncated at 8.5 inches tall and was set over the stone in the location of the bolt spike.

This corner was originally established as a wood post in 1819.



  
 Kenneth E. Hedge, County Surveyor

  
 James S. Swift, IN LS 20200054  
 July 14, 2010



PHOTOGRAPHIC DOCUMENTATION

Date of photography: August 18, 2009

View of the bolt spike found prior to excavation.



View of the stone found at 10 inches deep.



For details and documentation, refer to related sheet "Section Corner Record."

# SECTION CORNER RECORD

SE 100-1100

## BOONE COUNTY SURVEYOR'S OFFICE

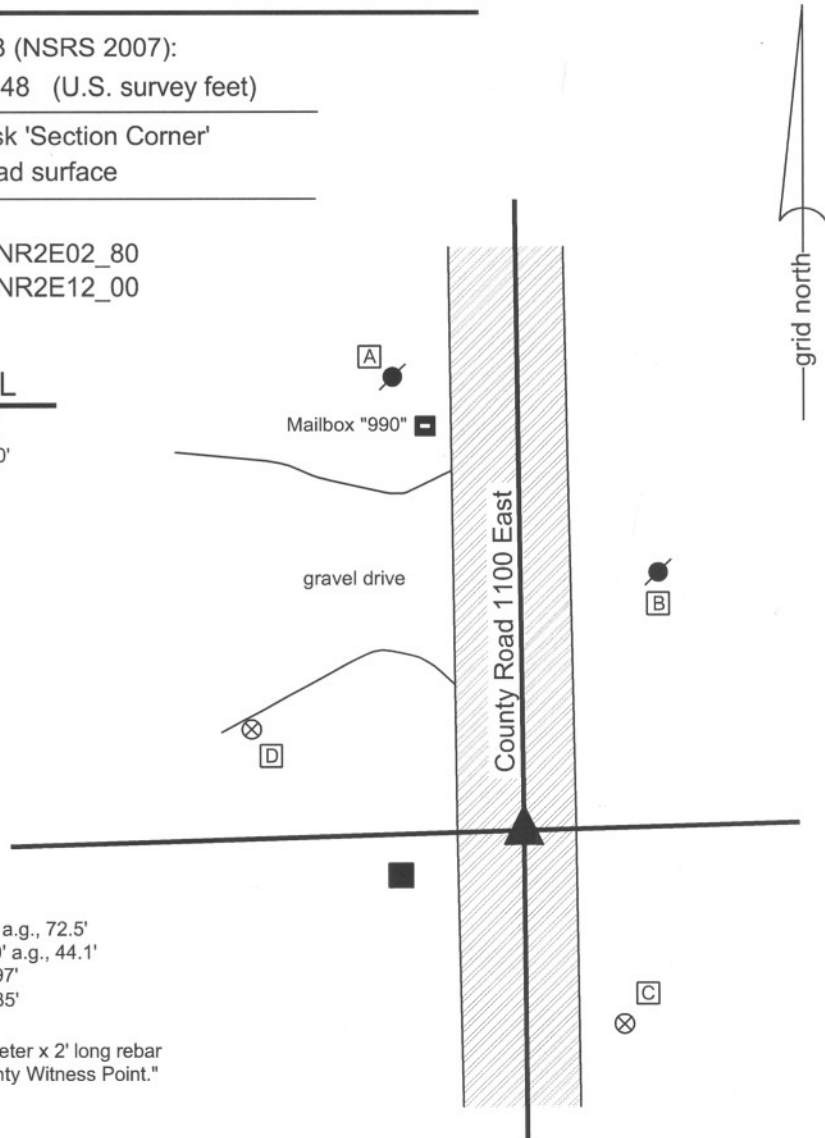
State Plane grid coordinates NAD83 (NSRS 2007):  
North: 1741780.88 East: 3183299.48 (U.S. survey feet)

Type of monument: Harrison, 4" disk 'Section Corner'  
Depth: One inch below adjacent road surface

Indiana tie card references:  
IN02\_T18NR2E01\_72 IN02\_T18NR2E02\_80  
IN02\_T18NR2E11\_08 IN02\_T18NR2E12\_00

### CORNER WITNESS DETAIL

SCALE 1" = 30'  
0' 15' 30'



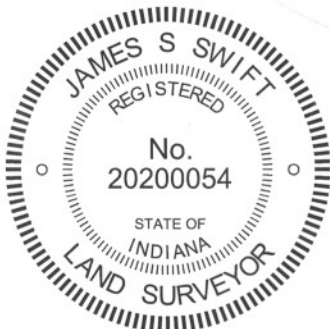
- A - Mag nail set in SE side power pole, 2.0 a.g., 72.5'
- B - Mag nail set in SW side power pole, 2.0' a.g., 44.1'
- C - Boone County witness mark, flush, 33.97'
- D - Boone County witness mark, flush, 45.35'

Boone County witness mark is a 3/8" diameter x 2' long rebar bearing a metal cap stamped "Boone County Witness Point."

The harrison monument was set over a stone found.

A BCS record of August 25, 1871 states "Reestablished Set a Rock 20.12 by 9 +." A BCS tie card dated May 31, 1991 shows the corner as a 5/8 inch rebar found. This corner was excavated on May 1, 2009. Prior to excavation a 5/8 inch rebar with a red plastic cap was found flush with the surface, in agreement with the 1991 distance ties. Excavation revealed the record stone found at 16 inches deep south and east of the rebar. With 13 inches of the stone exposed, the stone measures 12 inches E-W by 9 inches N-S. The etched "+" is clearly visible on the top of the stone. The stone is completely embedded in the clay layer below the road bed, with the top of the stone approximately at the top of the clay layer. The stone is split horizontally at 6 inches from the top. After measuring and documenting the stone, the top portion was reset on the bottom portion and packed back together with the surrounding clay. The entire stone was left in place. The harrison monument was set directly over the etched "+" on the stone, which point is 1.1 feet south and 3.5 feet east of the rebar (removed during excavation.)

This corner was originally established as a wood post in July, 1821.



*Kenneth E. Hedge*  
 \_\_\_\_\_  
 Kenneth E. Hedge, County Surveyor

*James S. Swift*  
 \_\_\_\_\_  
 James S. Swift, IN LS 20200054  
 July 14, 2010, Revised April 30, 2012

Union Township

Section 2 T18N, R2E	Section 1 T18N, R2E
Section 11 T18N, R2E	Section 12 T18N, R2E

PHOTOGRAPHIC DOCUMENTATION

Date of photography: May 1, 2009

View of the stone as first exposed.



View of the stone more fully exposed.  
View from above and south.



View from over the stone, looking north along  
County Road 1100 East.



Similar view to above with the etched mark  
on the top of the stone brushed clean.



View of the stone from above and west.



For details and documentation, refer to  
related sheet "Section Corner Record."

# SECTION CORNER RECORD

SE 100-1200

## BOONE COUNTY SURVEYOR'S OFFICE

State Plane grid coordinates NAD83 (NSRS 2007):

North: 1741927.76 East: 3188594.27 (U.S. survey feet)

Type of monument: Harrison, 4" disk 'Section Corner'

Depth: One inch below adjacent road surface

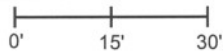
Indiana tie card references:

IN02\_T18NR2E01\_80

IN02\_T18NR2E12\_08

### CORNER WITNESS DETAIL

SCALE 1" = 30'



A - Mag nail set in NE side, power pole, 2.0' a.g., 19.0'

B - Boone County witness mark, flush, 35.80'

C - Boone County witness mark, flush, 42.07'

Boone County witness mark is a 3/8" diameter x 2' long rebar bearing a metal cap stamped "Boone County Witness Point."

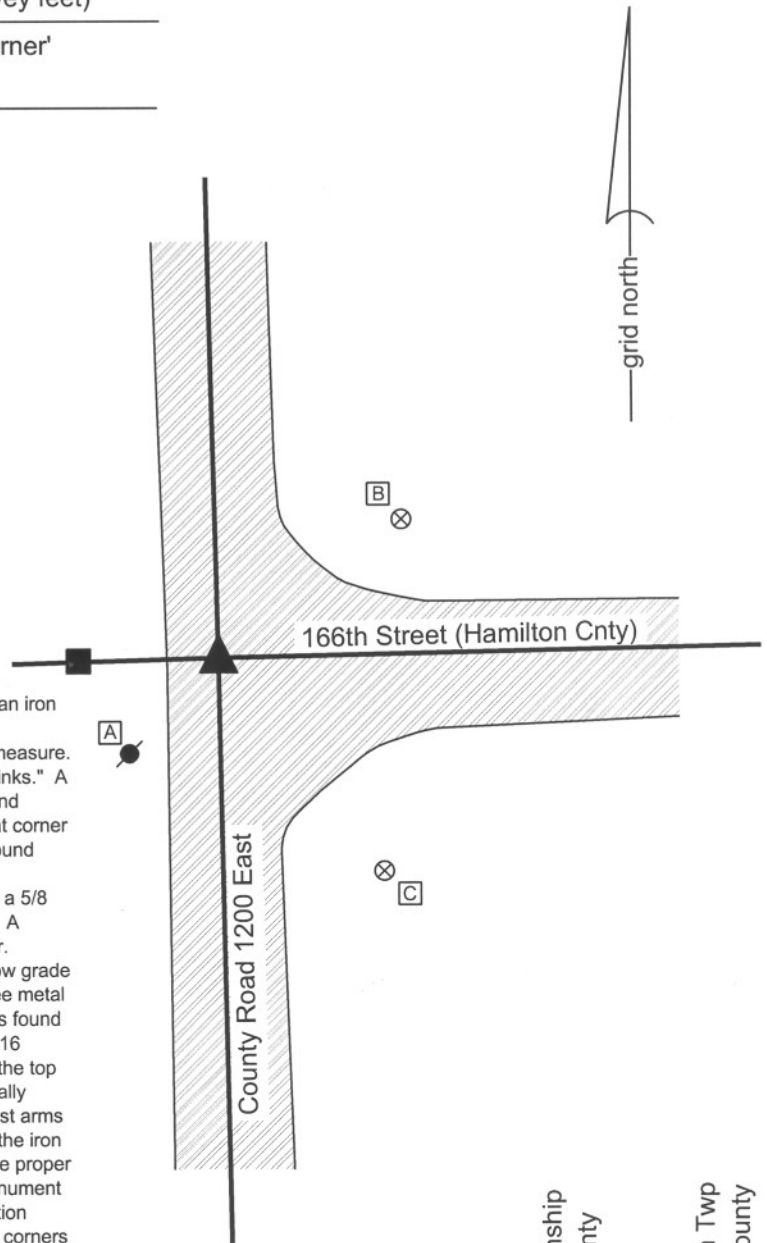
The harrison monument was set over a stone found and in place of an iron pin found.

A BCS record of March 15, 1888 states "Found point for corner by measure. A rock (pointed) 20.16.12 West 4 links. A rock marked W West 29 links." A BCS record of March 8, 1892 states "Reestablished by measuring and intersecting of lines. Reset Warrens rocks and marked + 20.16.12 at corner and witness rock W west 25 links." No recent BCS tie cards were found referencing this corner.

This corner was excavated on August 20, 2009. Prior to excavation a 5/8 inch rebar was visible in a hole in the asphalt 2 inches below grade. A railroad spike was found 1.3 feet east and 0.3 foot south of the rebar.

Excavation revealed a 1 inch diameter solid iron pin at 6 inches below grade 0.3 foot south and 0.1 foot west of the position of the rebar. All three metal monuments were removed during excavation. The record stone was found at 23 inches deep. With 9 inches of the stone exposed the stone is 16 inches N-S by 12 inches E-W. The etched "+" is partially visible on the top of the stone. It appears that that the top of the stone has been partially chipped away, apparently removing the visibility of the north and west arms of the "+". It is likely that this damage was caused by the driving of the iron pin, as this monument was directly over the etched "+" and it was the proper length to have been touching the top of the stone. The harrison monument was set directly over the etched "+" and in the same horizontal position formerly occupied by the iron pin. The Boone and Hamilton County corners are coincident, as there is no range line offset at this corner.

This corner was originally established as a wood post in 1819.



Union Township  
Boone County

Washington Twp  
Hamilton County



*Kenneth E. Hedge*  
Kenneth E. Hedge, County Surveyor

*James S. Swift*  
James S. Swift, IN LS 20200054  
July 14, 2010

Section 1 T18N, R2E	Section 6 T18N, R3E
Section 12 T18N, R2E	Section 7 T18N, R3E

PHOTOGRAPHIC DOCUMENTATION

Date of photography: August 20, 2009

The area of excavation marked in pink paint, prior to excavation. View from the southeast. The 24 inch water main marked on the asphalt was apparently installed by boring techniques, even though the asphalt is clearly "saw-cut" above. Excavation revealed that the road bed appeared undisturbed to the depth of the stone.



View from the west, looking across the stone and east along 166th Street in Hamilton County.



For details and documentation, refer to related sheet "Section Corner Record."

View of the stone as first exposed.



View of the stone more fully exposed and brushed. View from above and north.



View of the stone from above and west.

