

# SECTION CORNER RECORD

SE 050-500

## BOONE COUNTY SURVEYOR'S OFFICE

State Plane grid coordinates NAD83 (NSRS 2007):

North: 1743670.25 East: 3151030.42 (U.S. survey feet)

Type of monument: Harrison, 4" disk 'Section Corner'

Depth: One inch below adjacent road surface

Indiana tie card references:

IN02\_T18NR1E01\_36

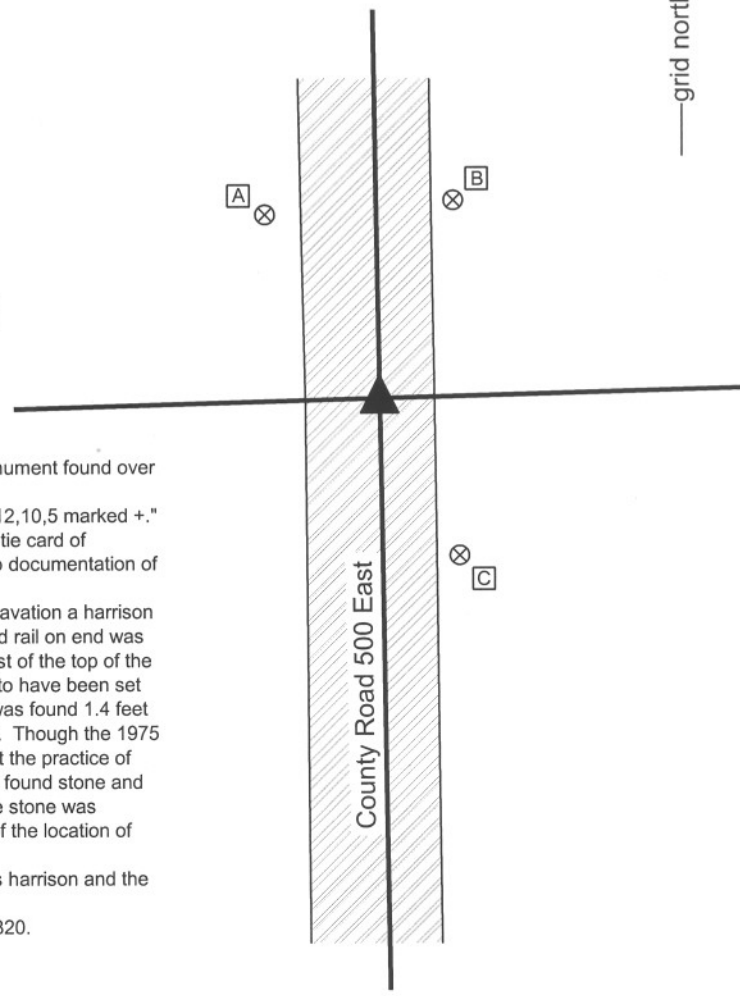
IN02\_T18NR1E02\_44

### CORNER WITNESS DETAIL

SCALE 1" = 30'  
0' 15' 30'

- A - Boone County witness mark, flush, 33.77'
- B - Boone County witness mark, flush, 33.04'
- C - Boone County witness mark, flush, 27.46'

Boone County witness mark is a 3/8" diameter x 2' long rebar bearing a metal cap stamped "Boone County Witness Point."



The harrison monument was set in the position of a harrison monument found over a railroad rail.

A BCS record of April 6, 1869 states "Reestablished. Set Rock 12,10,5 marked +."

A BCS tie card of September 1975 states "found stone." A BCS tie card of October, 2005 shows the corner as a harrison monument with no documentation of source.

This corner was excavated on September 11, 2009. Prior to excavation a harrison monument was found at the surface, slightly disturbed. A railroad rail on end was found at 7 inches deep. The harrison monument was slightly east of the top of the rail, but the rail was leaning to the west. The harrison appeared to have been set over the approximate position of the bottom of the rail. A rebar was found 1.4 feet south and 0.4 feet east of the rail. No other evidence was found. Though the 1975 record does not state specifically mention the rail, it is known that the practice of fields crews from this office in that time frame was to remove the found stone and replace it with a railroad rail. It is reasonable to conclude that the stone was removed in 1975 and that the rail represents the best evidence of the location of the stone.

A new harrison monument was set in the position of the previous harrison and the railroad rail, both of which were removed during excavation.

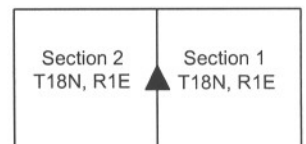
This corner was originally established as a wood post in June, 1820.



*Kenneth E. Hedge*  
Kenneth E. Hedge, County Surveyor

*James S. Swift*  
James S. Swift, IN LS 20200054  
July 14, 2010

Worth Township



# SECTION CORNER RECORD

# SE 100-500

## BOONE COUNTY SURVEYOR'S OFFICE

State Plane grid coordinates NAD83 (NSRS 2007):

North: 1741013.35 East: 3151069.19 (U.S. survey feet)

Type of monument: Harrison, 4" disk 'Section Corner'

Depth: One inch below adjacent road surface

### CORNER WITNESS DETAIL

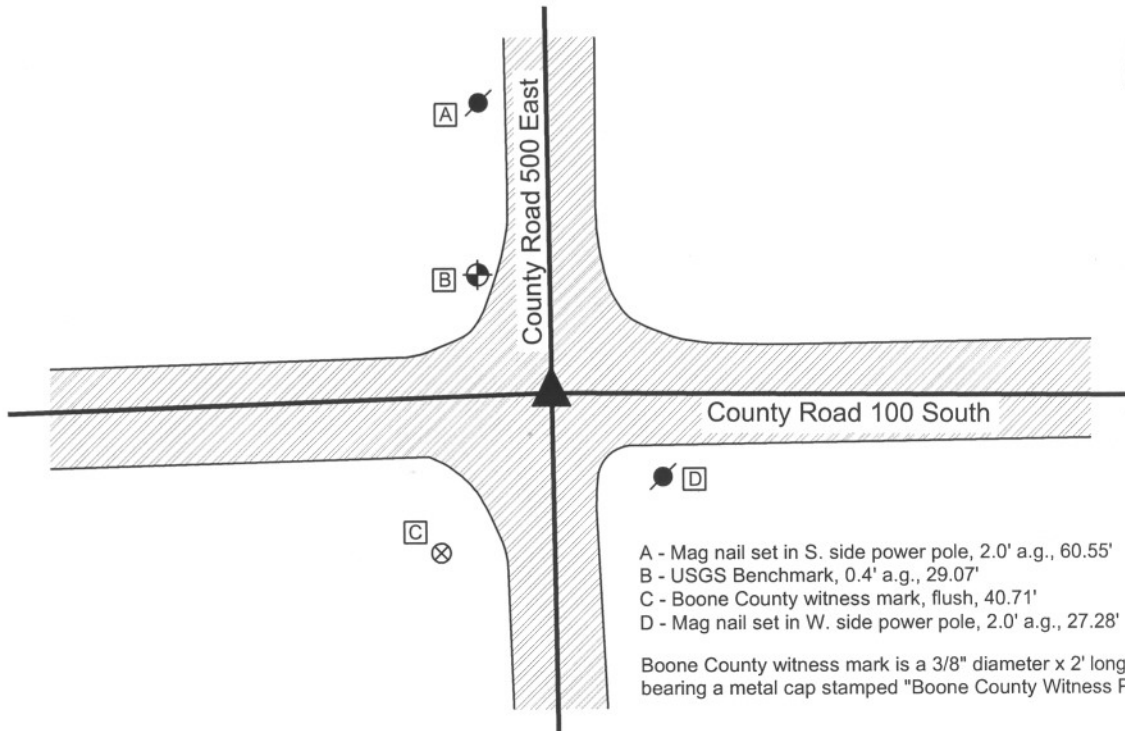
SCALE 1" = 40'



Indiana tie card references:

IN02\_T18NR1E01\_72 IN02\_T18NR1E02\_80

IN02\_T18NR1E11\_08 IN02\_T18NR1E12\_00



- A - Mag nail set in S. side power pole, 2.0' a.g., 60.55'
- B - USGS Benchmark, 0.4' a.g., 29.07'
- C - Boone County witness mark, flush, 40.71'
- D - Mag nail set in W. side power pole, 2.0' a.g., 27.28'

Boone County witness mark is a 3/8" diameter x 2' long rebar bearing a metal cap stamped "Boone County Witness Point."

The harrison monument was set over a stone found.

A BCS record of April 6, 1869 states "Placed the Rock deeper 27,20,8 in ground." A BCS tie card dated August 16, 1967 states "no stone" and shows a position for the corner but does not document the monument set. A BCS tie card dated October 25, 2005 shows the corner as a harrison monument with no documentation of source.

This corner was excavated on July 16, 2009. Prior to excavation a harrison monument was visible at the surface. Excavation revealed a railroad rail found at 10 inches deep, approximately 2 inches SW of the position of the harrison monument. Although the record does not specify the monument, it is likely that the railroad rail was set on August 16, 1967. Further excavation revealed a stone found at 15 inches deep, north of the harrison and rail. The stone is clearly vertical, embedded in the clay layer below the road with 3 inches of the stone protruding out of the clay into the base layer of the road. With 12 inches of the stone exposed the stone measures 7 inches E-W by 16 inches N-S and appeared to be larger lower. Based on experience excavating similar monuments, it is reasonable to conclude that this is the record stone described in the 1869 record and that the E-W and N-S dimensions near the base of the stone will match the record dimensions of 8 inches and 20 inches, respectively. No specific markings were observed, nor were any noted in the record. The stone was left in place and the harrison monument was set over the top center point of the stone, 1.7 feet north and 0.2 feet east of the previous harrison.

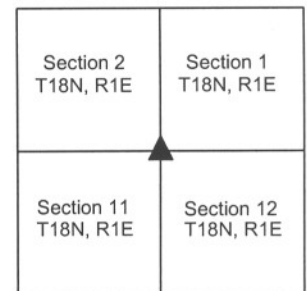
This corner was originally established as a wood post in June, 1820.



*Kenneth E. Hedge*  
 Kenneth E. Hedge, County Surveyor

*James S. Swift*  
 James S. Swift, IN LS 20200054  
 July 14 2010

Worth Township



PHOTOGRAPHIC DOCUMENTATION

Date of photography: July 16, 2009

View of the stone from above and west.



View of the stone from above and south.



View from the west, looking across the stone and west along County Road 100 South.



View from the south, looking across the stone and north along County Road 500 East.



For details and documentation, refer to related sheet "Section Corner Record."

# SECTION CORNER RECORD

SE 100-550

## BOONE COUNTY SURVEYOR'S OFFICE

State Plane grid coordinates NAD83 (NSRS 2007):

North: 1740993.18 East: 3153719.28 (U.S. survey feet)

Type of monument: Harrison, 4" disk 'Section Corner'

Depth: One inch below adjacent road surface

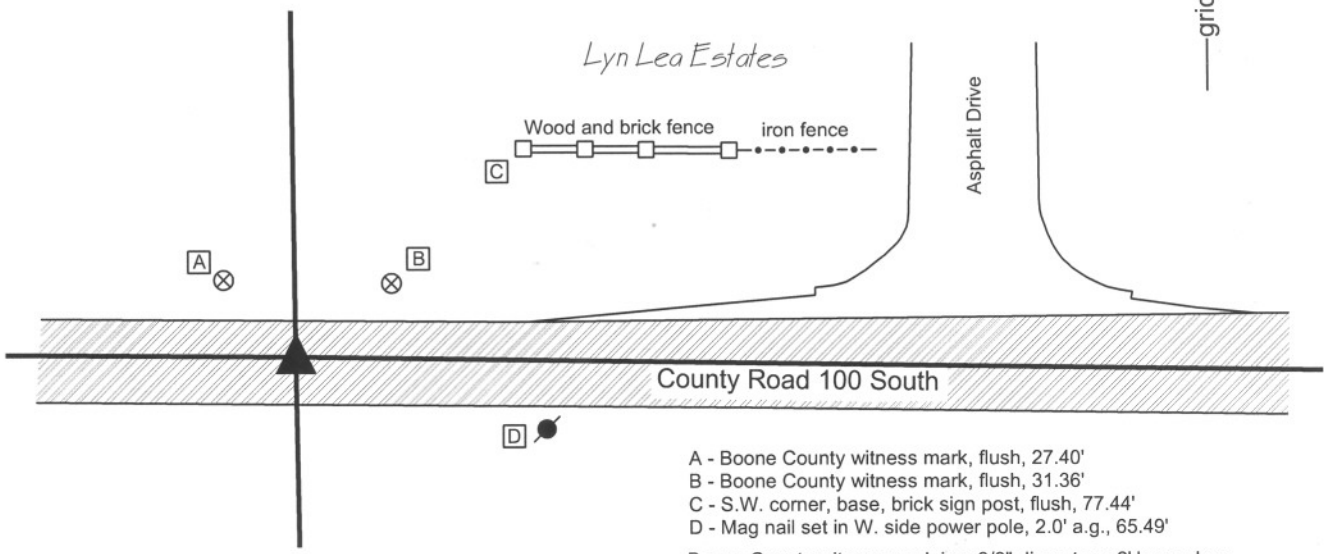
Indiana tie card references:

IN02\_T18NR1E01\_72

IN02\_T18NR1E12\_04

### CORNER WITNESS DETAIL

SCALE 1" = 50'



- A - Boone County witness mark, flush, 27.40'
  - B - Boone County witness mark, flush, 31.36'
  - C - S.W. corner, base, brick sign post, flush, 77.44'
  - D - Mag nail set in W. side power pole, 2.0' a.g., 65.49'
- Boone County witness mark is a 3/8" diameter x 2' long rebar bearing a metal cap stamped "Boone County Witness Point."

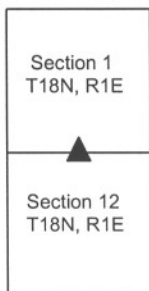
The harrison monument was set in place of a harrison monument found. No specific records of this corner were found in the BCS "Surveyor's Record" though it is mentioned as the terminus point for measurements several times. A BCS tie card dated October 8, 1971 states "Stone found, RRR put in." A BCS tie card dated October 25, 2005 shows the corner as a harrison monument with no documentation of source. This corner was excavated on July 24, 2009. Prior to excavation, a harrison monument was visible at the surface. Excavation revealed no more evidence of the corner. Neither the stone nor the railroad rail (RRR) mentioned in the 1971 record were found. Excavation did reveal that the road bed in this area consists of 5 inches of asphalt over 5 inches of #53 road stone, below which is the virgin clay layer. No evidence of an old road bed which includes a sandy, gravelly sub-base was found. This indicates recent road construction which removed the old road bed and likely removed the rail, stone or any other evidence of the corner. The existing harrison monument was accepted as the best evidence of the corner and this monument was replaced in its original position. This corner was originally established as a wood post in June, 1820.



*Kenneth E. Hedge*  
Kenneth E. Hedge, County Surveyor

*James S. Swift*  
James S. Swift, IN LS 20200054  
July 14, 2010

Worth Twp





# SECTION CORNER RECORD

SE 100-600

## BOONE COUNTY SURVEYOR'S OFFICE

State Plane grid coordinates NAD83 (NSRS 2007):

North: 1740952.71 East: 3156359.24 (U.S. survey feet) (standard corner)

North: 1740988.34 East: 3156358.57 (U.S. survey feet) (closing corner)

Type of monument: Harrison, 4" disk 'Section Corner', 2 inches below gravel (Cor. 1)

36 inch length of 5/8 inch diam. rebar with metal cap 'Boone County Surveyor', flush (Cor. 2)

Indiana tie card references:

IN02\_T18NR1E01\_80 IN02\_T18NR1E12\_08

IN02\_T18NR2E06\_72 IN02\_T18NR2E07\_00

### CORNER WITNESS DETAIL

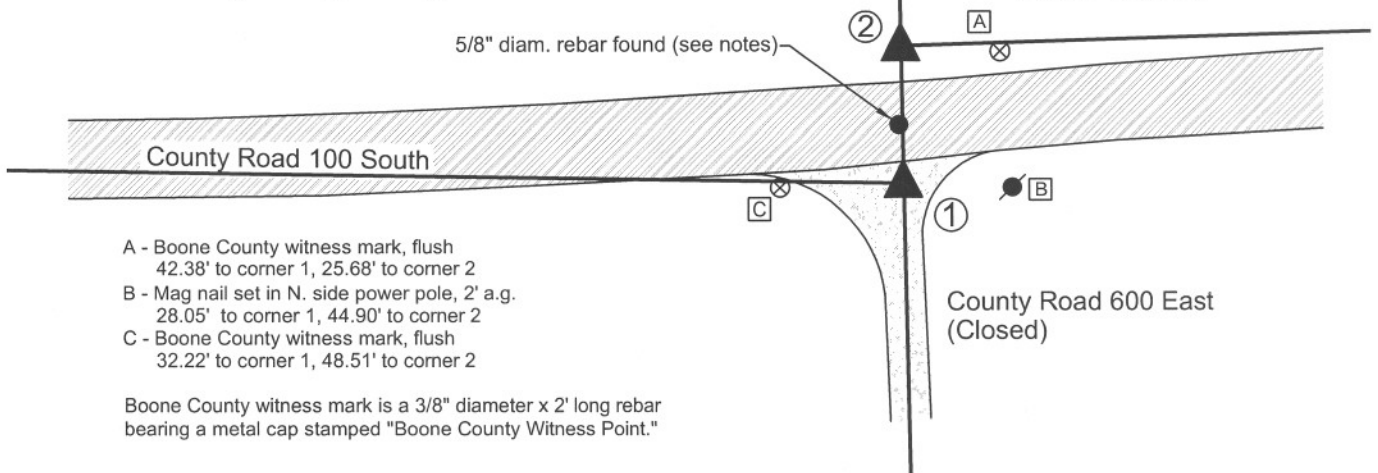
SCALE 1" = 50'



① S.E. Corner, Section 1  
N.E. Corner, Section 12  
T 18 N, R 1 E

② S.W. Corner, Section 6  
N.W. Corner, Section 7  
T 18 N, R 2 E

Distance between monuments:  
54 links = 35.64 feet

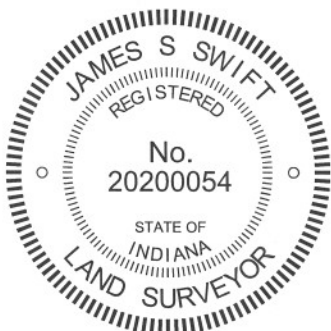


The harrison monument at corner 1 was set in place of a 5/8 inch diameter rebar found. The capped rebar at corner 2 was set at a calculated position. A BCS record of February 16, 1871 states with respect to corner 1 "Reestablished from stump of trees. Set a Rock. 16,16,9 +." A BCS record of October 19, 1895 states with respect to corner 2, Established Rock 18x12x10 marked +." BCS field notes dated August 22, 1967 for which no tie card was found state with respect to corner 1, "no stone." A BCS tie card dated December 9, 1994 show rebars at both corners but do not specifically reference a distance between the two corners. A BCS tie card dated October 25, 2005 shows corner 1 as a harrison monument. This document does not mention the adjacent corner 2, nor does the diagram on the document demonstrate the jog in County Road 100 South as it crosses the range line.

Prior to excavation, Mr. Jerry Carter, Registered Surveyor, questioned the position of the harrison monument set in 2005. Mr. Carter previously worked for Anderson & Associates, the company which produced the tie card and which set the harrison monument, and was employed by that firm at the time the harrison monument was set. Mr. Carter expressed his firm conviction that the harrison monument was not in the same position as a rebar previously held by Anderson & Associates, which he believed to be the same rebar shown on the 1994 tie card. Mr. Carter calculated the position of the rebar from information in his files and discovered that precisely at the calculated position a rebar did indeed exist, although it appeared to have lost it magnetic qualities and did not register on magnetic locator device. The rebar was found to be 1.8 feet south and 7.8 feet east of the harrison monument. The found rebar fit much better with local evidence in the form of the existing center of County Road 600 East than did the harrison monument. Per Mr. Carter, the rebar fits with deed references, monumentation and occupation lines to the west.

Excavation at corner 1, encompassing the locations of the rebar and harrison monument yielded no further evidence. Excavation in the vicinity of corner 2 yielded several rocks, none of which matched the description in the 1895 record nor were positively identifiable as section corner markers. The found rebar at corner 1 was held as marking the corner and was replaced with a harrison monument. The position of corner 2 was established on line between corner 1 and the standard corner approximately 1/2 mile north at the record government closing distance of 54 links, or 35.64 feet.

It is noted that another rebar exists, being in the roadway as it jogs across the range line. This rebar is 1.0 foot west and 15.2 feet north of the harrison monument set at corner 1. The source of this rebar is not known. Its position does not fit with any other evidence of either corner. This intermediate rebar was left in place, but should not be interpreted as marking either corner. The harrison monument set in 2005 was removed.



*Kenneth E. Hedge*  
Kenneth E. Hedge, County Surveyor

*James S. Swift*  
James S. Swift, IN LS 20200054  
March 30, 2012

Worth Township

Section 1 T18N, R1E	Section 6 T18N, R2E
Section 12 T18N, R1E	Section 7 T18N, R2E