

SECTION CORNER RECORD

SE 600-1100


BOONE COUNTY SURVEYOR'S OFFICE

State Plane grid coordinates NAD83 (NSRS 2007):

Corner 1: North: 1715374.00 East: 3183593.68 (U.S. survey feet)

Corner 2: North: 1715374.59 East: 3183614.80 (U.S. survey feet)

CORNER WITNESS DETAIL

SCALE 1" = 50' 

Corner 1:

Type of monument: Harrison, 4" disk 'Section Corner'

Depth: 3 inches above adjacent ground.

Corner 2:

Type of monument: 5/8 inch rebar, 30 inches long with metal cap stamped "Boone County Surveyor" (flush).

Indiana tie card references:

IN02_T17NR2E01_00 IN02_T17NR2E02_08

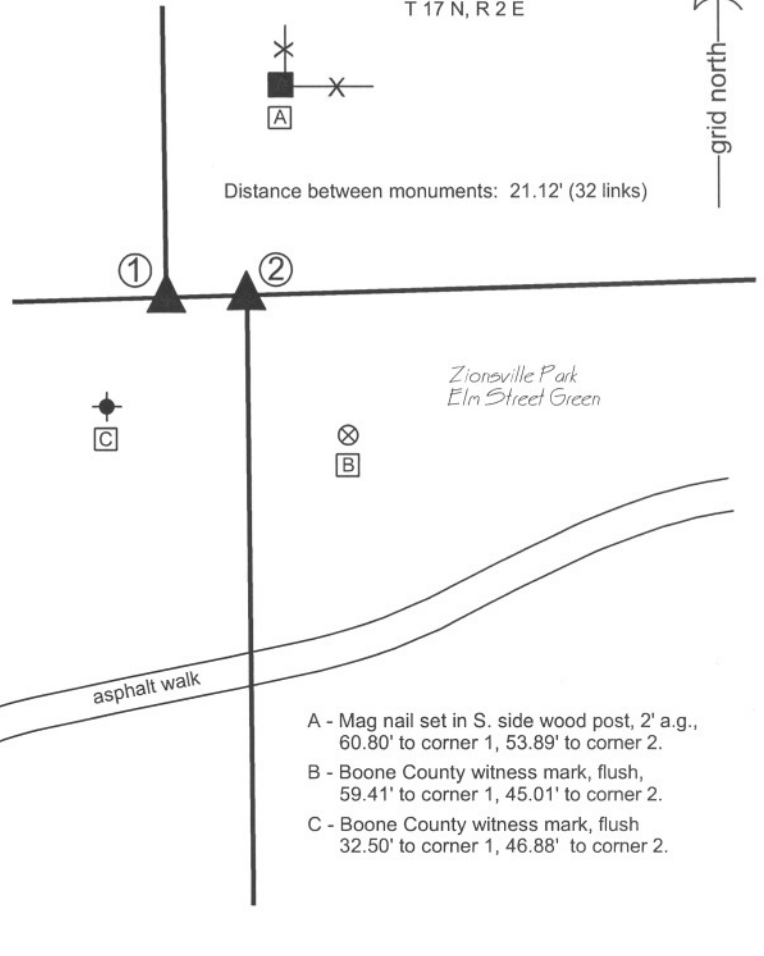
IN02_T18NR2E35_80 IN02_T17NR2E36_72

The harrison monument at corner 1 was set in place of a one-inch diameter pipe found. The rebar set at corner 2 was set on the township line at the record closing offset distance of 32 links (21.12 feet) east of corner 1.

The BCS Surveyor's Record does not call for stones at either of these corners. No recent tie cards were found for the corners. Several surveys show the pipe as being at corner 1, including a survey by Richard A. O'Brian, recorded in Survey Book 4, page 38. General excavation and probing of the ground in the area did not produce further evidence of the corner. The origin of the pipe is not known, but given the lack of other evidence, including contrary evidence, the pipe was held as marking corner 1. Corner 2 was set relative to the position of Corner 1, as noted above.

① S.E. Corner, Section 35
S.W. Corner, Section 36
T 18 N, R 2 E

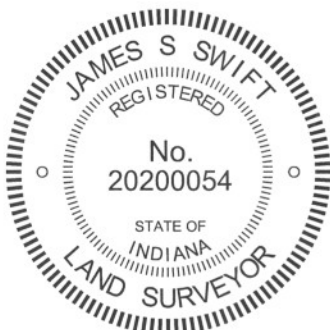
② N.W. Corner, Section 1
N.E. Corner, Section 2
T 17 N, R 2 E



A - Mag nail set in S. side wood post, 2' a.g.,
60.80' to corner 1, 53.89' to corner 2.

B - Boone County witness mark, flush,
59.41' to corner 1, 45.01' to corner 2.

C - Boone County witness mark, flush
32.50' to corner 1, 46.88' to corner 2.



Kenneth E. Hedge
Kenneth E. Hedge, County Surveyor

James S. Swift
James S. Swift, IN LS 20200054
July 25, 2011

Eagle Township

Section 35 T18N, R2E	Section 36 T18N, R2E
Section 2 T17N, R2E	Section 1 T17N, R2E

SECTION CORNER RECORD

SE 600-1150

BOONE COUNTY SURVEYOR'S OFFICE

State Plane grid coordinates NAD83 (2011):

Corner 1: North: 1715450.16 East: 3186286.11 (U.S. survey feet)

Corner 2: North: 1715450.79 East: 3186296.82 (U.S. survey feet)

Corner 1: Harrison, 4" disk 'Section Corner' 4 inches above ground

Corner 2: 5/8" rebar with aluminum cap stamped,

'Boone County Surveyor' 2 inches above surrounding ground

Indiana tie card references:

IN02_T17NR2E01_04 IN02_T18NR2E36_76

A - Boone County witness mark, flush, 24.5' to corner 1, 13.9' to corner 2

B - S. side 30" diameter oak, 2' a.g. 15.9' to corner 1, 14.5' to corner 2

C - N.E. corner, wood shed 28.9' to corner 1, 37.6' to corner 2

D - S.E. corner, wood shed 24.8' to corner 1, 35.0' to corner 2

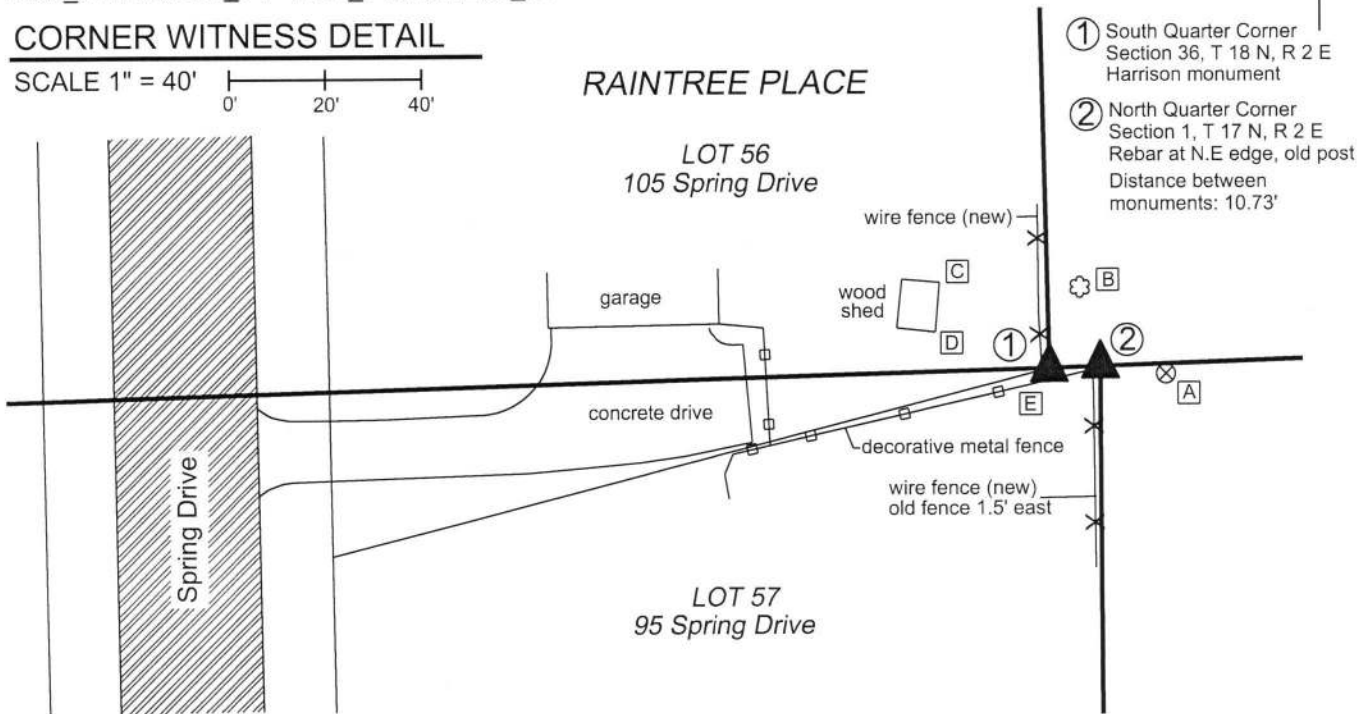
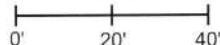
E - N.E. corner, wood post

2.4' to corner 1, 12.4' to corner 2



CORNER WITNESS DETAIL

SCALE 1" = 40'

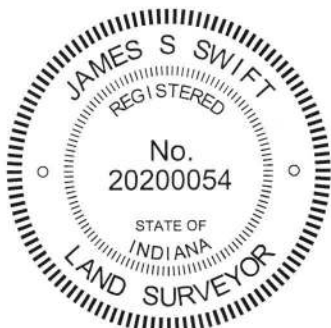


- ① South Quarter Corner Section 36, T 18 N, R 2 E Harrison monument
- ② North Quarter Corner Section 1, T 17 N, R 2 E Rebar at N.E. edge, old post Distance between monuments: 10.73'

The Harrison monument at Corner 1 was set in place of a 5/8 inch diameter rebar found. The rebar at Corner 2 was set in place of a 3/4 inch iron pipe found. No specific descriptions of these corners were found in the BCS Surveyor's Record beyond the establishment of Corner 1 as a wood post in 1819. Corner 2 is not an original corner of the PLSS.

The plat of the adjoining land to the west, Raintree Place, Section One-B, recorded in Plat Book 4, page 199 in the Office of the Boone County Recorder, shows both corners as "Iron Pin Found." The plat shows the two corners as being 10.72 feet apart. The monuments found at the respective corners fit well with the plat, as established with respect to centerline control monuments found at the intersection of Spring Drive and Forest Blvd and found in Forest Blvd, both north and south of said intersection. Excavation in the immediate vicinity of the corners revealed no further evidence beyond several small rocks. The pipe found at Corner 2 sits adjacent to the northeast corner of an ancient wood post at the terminus of an old fence to the south. The pipe itself was found in two pieces, having previously rusted in half. The section of the pipe remaining in the ground was found at 5 inches deep. The rebar at Corner 1 was found 10 inches deep in a compost pile. The rebar was found to be leaning to the west. It was observed that the point on the rebar at 12 inches below the top (22 inches deep) fit precisely with the relative position of the two iron pins shown on the plat and with the geometry of the plat per the aforementioned centerline control. The rebar and pipe were held as marking the respective corners. The pipe was replaced with a 36 inch piece of 5/8 inch rebar, set adjacent to the northeast corner of the post. The rebar was replaced with a Harrison monument in the same position as the point on the rebar 12 inches below the top.

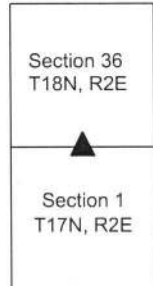
The average closing distance, per the original federal notes, for these corners is 16 links, or 10.56 feet.



Kenneth E. Hedge
 Kenneth E. Hedge, County Surveyor

James S. Swift
 James S. Swift, IN LS 20200054
 September 11, 2019

Eagle Twp



SECTION CORNER RECORD

SE 600-1200

BOONE COUNTY SURVEYOR'S OFFICE

State Plane grid coordinates NAD83 (NSRS 2007):
 North: 1715540.24 East: 3188959.12 (U.S. survey feet)

Type of monument: Harrison, 4" disk 'Section Corner'
 Depth: flush with adjacent road surface

Indiana tie card references:
 IN02_T17NR2E01_08
 IN02_T18NR2E36_80

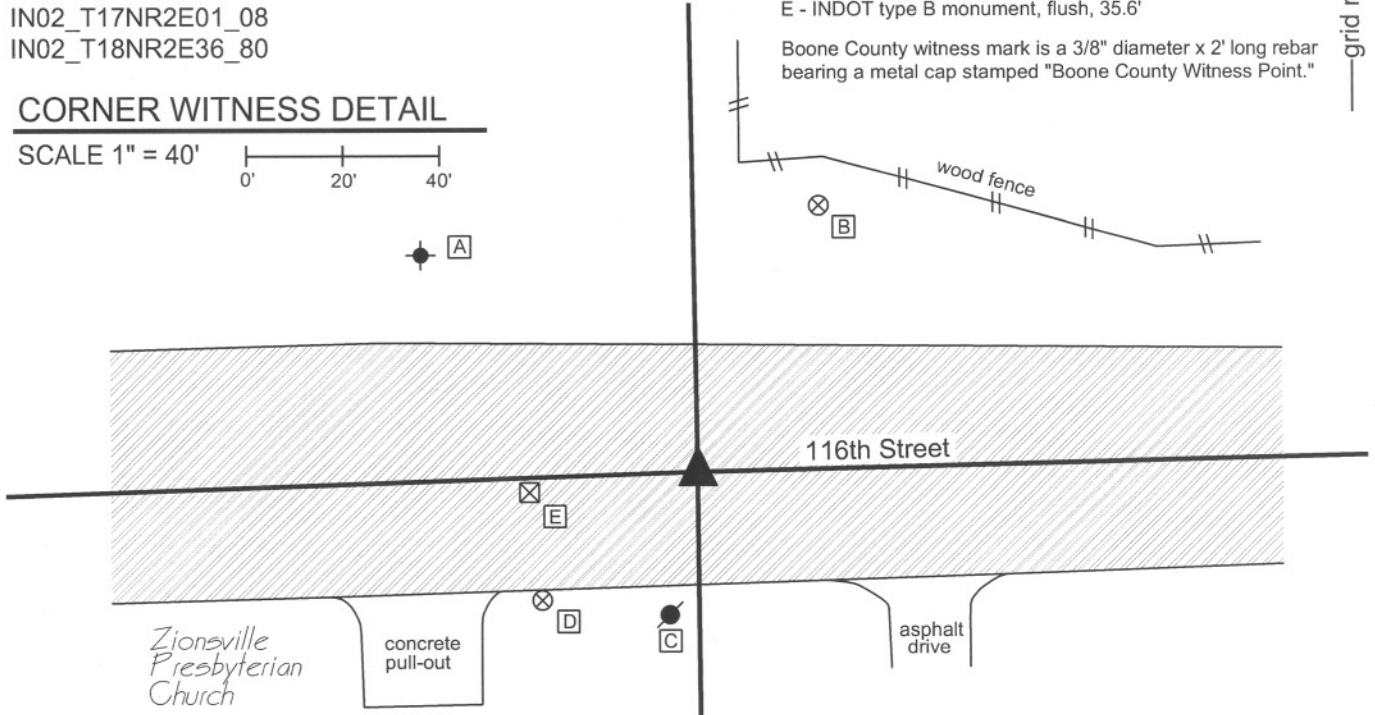
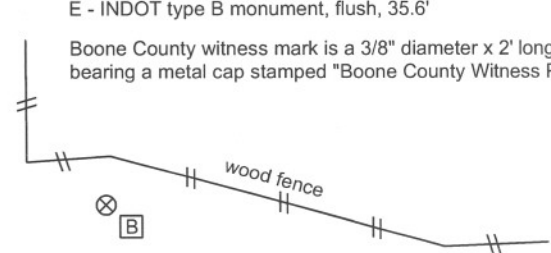
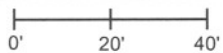
- A - Top S.S.E. bolt, fire hydrant, 74.75'
- B - Boone County witness mark, flush, 60.84'
- C - Mag nail set in N. side power pole, 2.0' a.g., 28.5'
- D - Boone County witness mark, flush, 42.27'
- E - INDOT type B monument, flush, 35.6'

Boone County witness mark is a 3/8" diameter x 2' long rebar bearing a metal cap stamped "Boone County Witness Point."

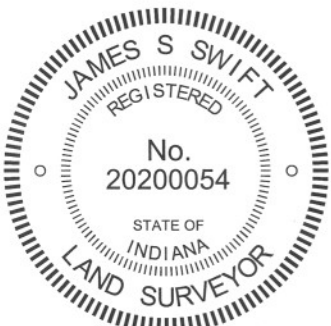


CORNER WITNESS DETAIL

SCALE 1" = 40'



The harrison monument was set in place of a mag spike found. No specific descriptions of this corner were found in the BCS Surveyor's Record. The corner is shown as a stone found on a tie card provided by the Hamilton County Surveyor's Office (HCSO), dated July 10, 1964, attributed to a crew of Paddock, Faye and shown on another tie card provided by HCSO dated July 10, 1984. The latter document states "Stone Found. RR Spike at Road Level. Stone Not Dug. Stone Found in 1964." Four distance ties are shown both tie cards. The descriptions of the four tie references on the 1984 tie card match those of the 1964 card both by description and graphical representation relative to the corner. However, the distance ties are not the same. If the references are the same, it appears that the railroad spike found may have been approximately 5 feet south of the stone found. With the information available, it is not provable that the tie references are the same, hence not provable that the corner position shifted. It is considered likely that the corner position shifted, but that has not been proved. At some point later an aluminum monument was set, presumably in the place of the railroad spike shown on the 1984 tie card. The specific source of the aluminum monument is not known. A tie card provided by the HCSO dated August 2007 shows a harrison monument set at the surface. This document appears to correlate with a survey by the Schneider Corporation, dated June 17, 2003, job no. 1299.004, which shows the corner as an "Aluminum County Surveyor's Monument Found, 0.5' below surface in concrete, Harrison monument set, Hamilton County ties call for a railroad spike - not found." Per conversation with Mr. Jeff Powell, formerly of the HCSO, Schneider set the harrison monument in cooperation with the HCSO. Subsequent to the harrison being set, the roadway was reconstructed in this area, the monument was destroyed and no monument was set in place of the harrison monument. In 2009, the position of the harrison monument was reconstructed relative to other monumentation shown on private surveys, including the aforementioned Schneider Survey and numerous other surveys which are recorded in the Office of the Boone County Surveyor. Prior to establishing the monument, a mag spike was set by an unknown source at the position calculated from the prior surveys. Uncertainties of up to 0.2 foot may be attributed to the calculated position, relative to other monumentation, though the found mag spike was within 0.05 of a foot of the position independently calculated by this office. The mag spike was removed and replaced with a harrison monument on August 5, 2009.



Kenneth E. Hedge
 Kenneth E. Hedge, County Surveyor

James S. Swift
 James S. Swift, IN LS 20200054
 March 30, 2012

Eagle Twp | Clay Twp
 Boone Cty | Hamilton Cty

Section 36 T18N, R2E	Section 31 T18N, R3E
Section 1 T17N, R2E	Section 6 T17N, R3E

SECTION CORNER RECORD

SE 650-1100

BOONE COUNTY SURVEYOR'S OFFICE

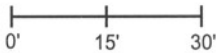
State Plane grid coordinates NAD83 (NSRS 2007):
North: 1712401.87 East: 3183641.78 (U.S. survey feet)

Type of monument: Harrison, 4" disk 'Section Corner'
Depth: at grade on slope, in concrete pillar

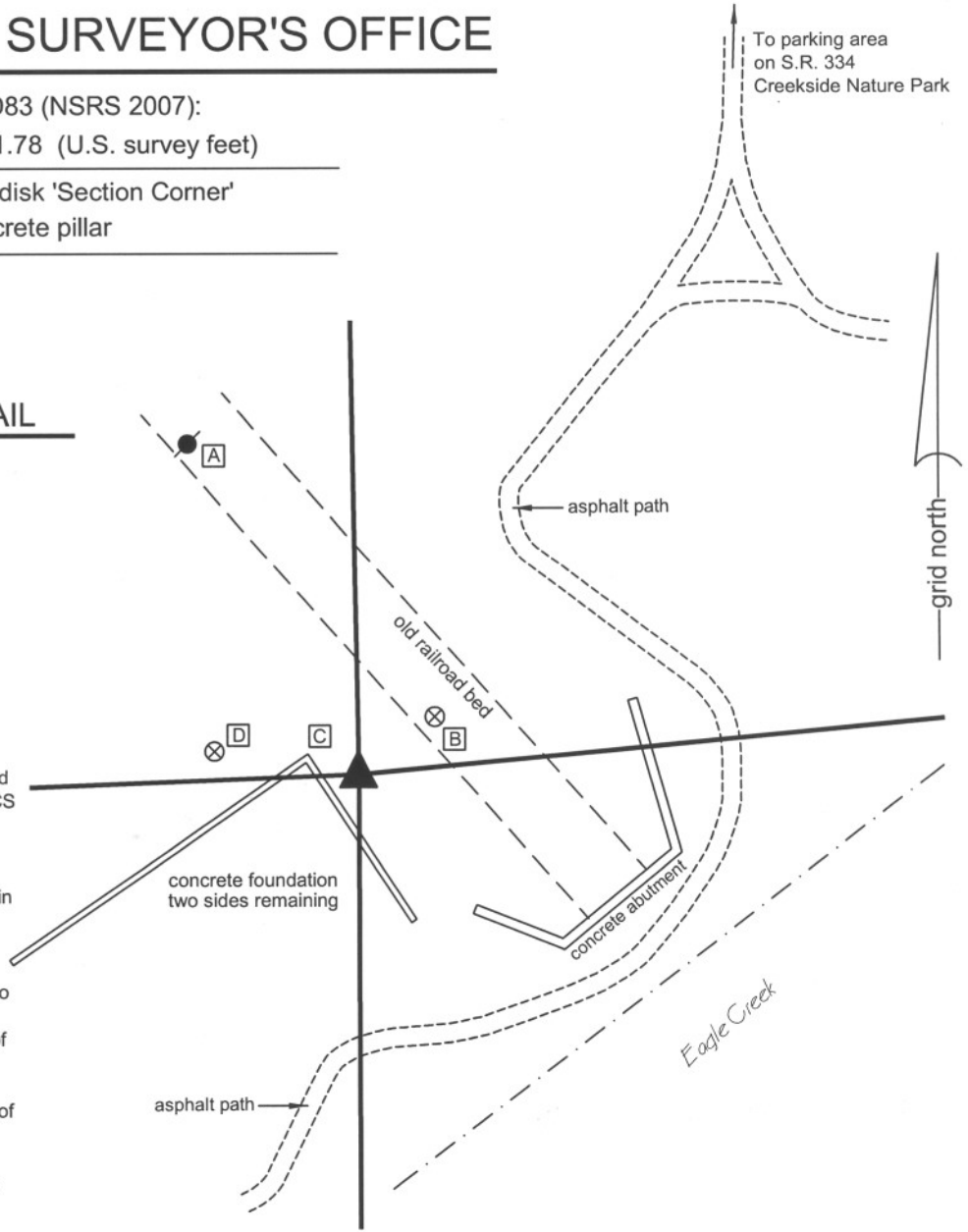
Indiana tie card references:
IN02_T17NR2E01_36
IN02_T17NR2E02_44

CORNER WITNESS DETAIL

SCALE 1" = 30'



The harrison monument was set in place of a broken-off steel fence post found. A BCS record of October 18, 1865 states "Found from roots of both trees and rotten stake." A BCS tie card of December 9, 1994 shows the corner as a steel fence post with no documentation about source. A survey by the Schneider Corporation dated June 15, 2001 and recorded in Survey Book 5, pages 52-54 discusses the corner and holds the fence post with the statement "Although there was no historical information on this corner, it's location seemed to fit well with the physical evidence of the surrounding deeds (an independent resolution of this corner on Job 861 resulted in a location within 1.5 feet of the location of the metal fence post)." The corner falls on the slope of an area of fill for an old railroad bed and it is not likely that ancient evidence of the corner would be found, given the obvious disturbance to the land in this area. A broken-off metal fence post was found which fits precisely with the ties shown on the 1994 tie card. This object was removed and was replaced with a harrison monument on September 18, 2008. This corner was originally established as a wood post in 1821.



- A - Mag nail set in S. side power pole, 5.4' a.g., 57.90'
- B - Boone County witness mark, flush, 15.14'
- C - Corner concrete foundation, 8.8'
- D - Boone County witness mark, flush, 23.40'

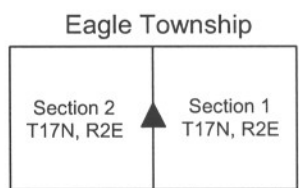
Boone County witness mark is a 3/8" diameter x 2' long rebar bearing a metal cap stamped "Boone County Witness Point."



Kenneth E. Hedge
Kenneth E. Hedge, County Surveyor

James S. Swift

James S. Swift, IN LS 20200054
March 11, 2009 Revised July 14, 2010



SECTION CORNER RECORD

SE 650-1200

BOONE COUNTY SURVEYOR'S OFFICE

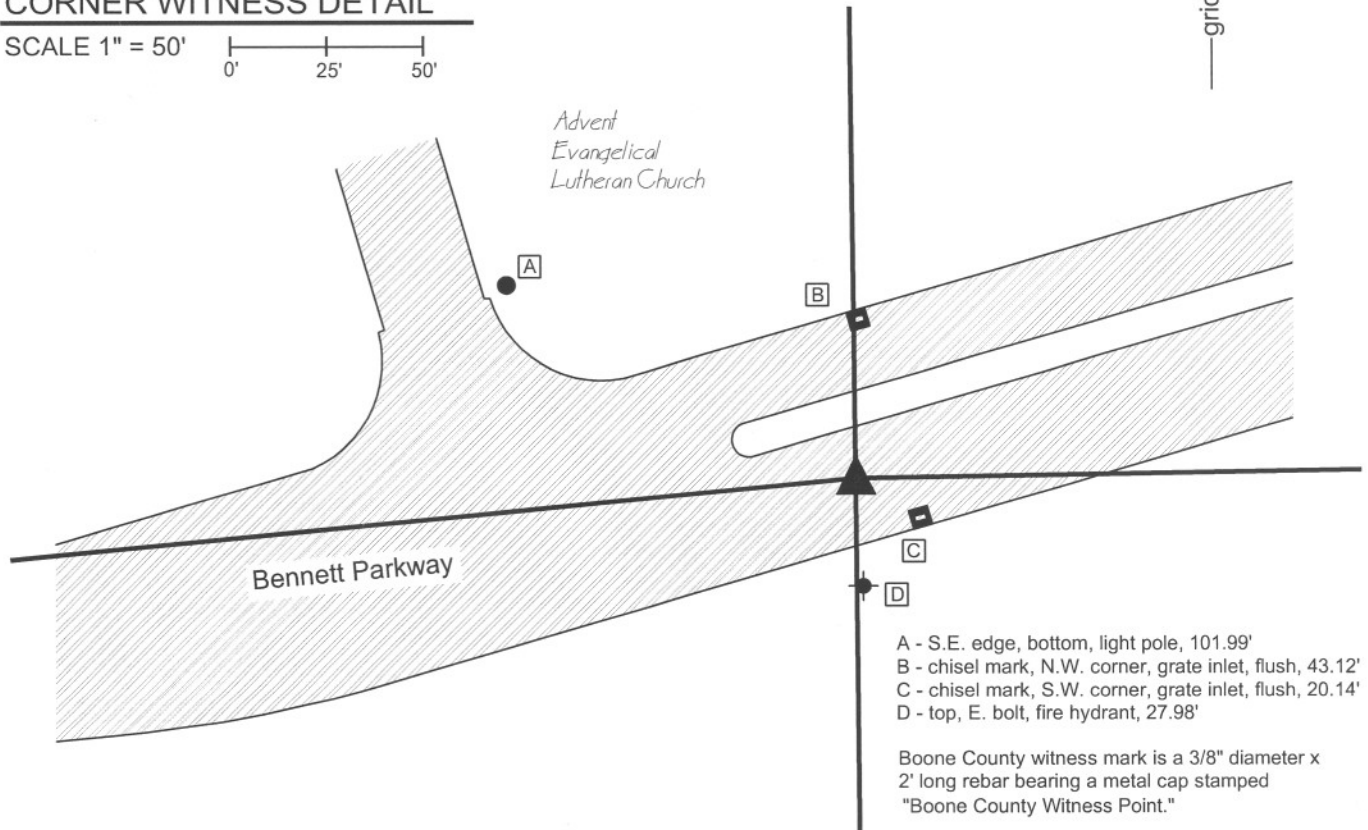
State Plane grid coordinates NAD83 (NSRS 2007):
North: 1712904.52 East: 3188987.69 (U.S. survey feet)

Type of monument: Harrison, 4" disk 'Section Corner'
Depth: flush with adjacent road surface

Indiana tie card references:
IN02_T17NR2E01_44

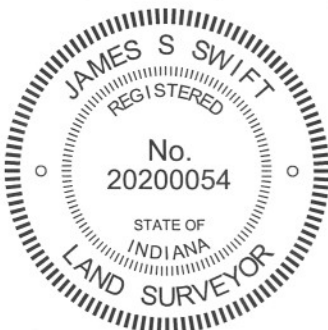
CORNER WITNESS DETAIL

SCALE 1" = 50'
0' 25' 50'



The harrison monument was set at a calculated position. Prior to establishing this monument, no specific monumentation was visible at the corner, nor had any been since at least April, 2007. The corner is shown as being a 5/8 inch rebar with yellow cap set on surveys by the Schneider Corporation, including a survey recorded in Survey Book 3, page 61 and a survey recorded in Survey Book 5, pages 68-69, both in the Office of the Boone County Recorder. It appears that the rebar was destroyed as part of construction in the immediate vicinity of the corner. The position of the rebar was computed from monumentation shown on that survey, including a rebar found 995.6 feet west of the corner, an iron pipe found at 654.4 feet south of the corner, the southeast corner of section 1 and the southwest corner of section 1. Uncertainities of approximately 0.1 foot may be attributed to the relative positions of the found, utilized monumentation relative to the survey dimensions shown.

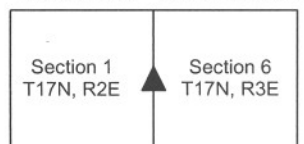
The harrison monument was set on May 27, 2011. No previous BCS tie cards were found for this corner. The location of the adjacent closing corner for section 6, T 17 N, R 3 E, was not determined.



Kenneth E. Hedge
Kenneth E. Hedge, County Surveyor

James S. Swift
James S. Swift, IN LS 20200054
March 30, 2012

Eagle Twp Clay Twp
Boone Co. Hamilton Co.



SECTION CORNER RECORD

SE 700-1100

BOONE COUNTY SURVEYOR'S OFFICE

State Plane grid coordinates NAD83 (NSRS 2007):

North: 1709788.43 East: 3183649.59 (U.S. survey feet)

Type of monument: Harrison, 4" disk 'Section Corner'

Depth: One inch below adjacent road surface

Indiana tie card references:

IN02_T17NR2E01_72 IN02_T17NR2E02_80

IN02_T17NR2E11_08 IN02_T17NR2E12_00

CORNER WITNESS DETAIL

SCALE 1" = 50'



The harrison monument was set in place of a railroad spike found.

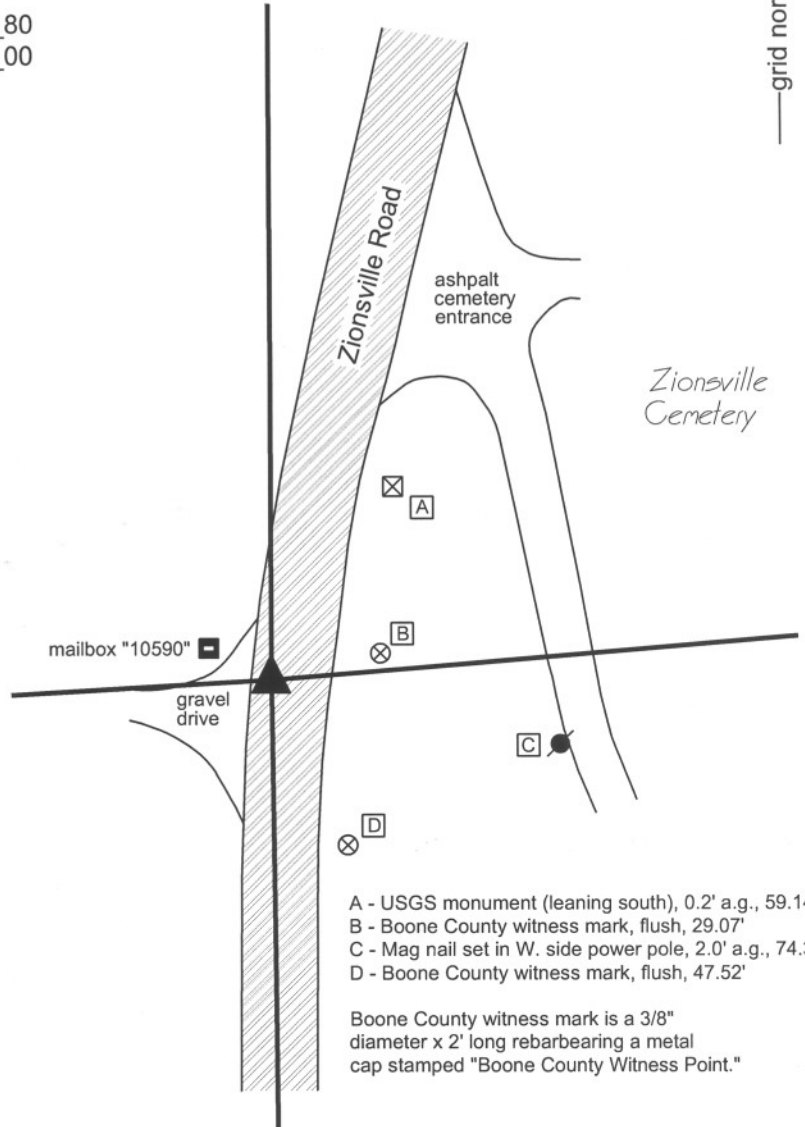
A BCS record of October 18, 1865 states "A Rock tree gone." A BCS record of December 31, 1879 states "Reest. fr. Taylors first tree ... Set Rock 14.13.10 +." The tree reference is to a BCS record of November 14, 1855 which shows the corner witnessed by two Beech trees, but which makes no mention of what monument may have been set or found. A BCS tie card of April 2, 1969 states "no stone, set yellow plate." A BCS tie card of December 9, 1994 shows the corner as a railroad spike with no documentation of source.

This corner was excavated on July 31, 2009. Prior to excavation a railroad spike was visible in 3 inches deep in a hole in the asphalt. Excavation revealed a copperweld found at 10 inches deep, below the railroad spike.

Excavation also revealed a layer of concrete at 10 inches deep. The top of the copperweld was even with the top of the concrete. The concrete layer was under the entire 4 feet by 4 feet area of excavation. Further excavation was not performed as the presence of the concrete indicates the high likelihood of previous grading in preparation for the pouring of the concrete.

The railroad spike is shown as the corner on all recorded private surveys. The spike and copperweld were held as marking the corner. The harrison monument was set in place of the railroad spike and over the copperweld, which was left in place.

This corner was originally established as a wood post in late June or early July, 1821.



- A - USGS monument (leaning south), 0.2' a.g., 59.14'
- B - Boone County witness mark, flush, 29.07'
- C - Mag nail set in W. side power pole, 2.0' a.g., 74.3'
- D - Boone County witness mark, flush, 47.52'

Boone County witness mark is a 3/8" diameter x 2' long rebarbearing a metal cap stamped "Boone County Witness Point."



Kenneth E. Hedge
 Kenneth E. Hedge, County Surveyor

James S. Swift

James S. Swift, IN LS 20200054

July 14, 2010

Eagle Township

Section 2 T17N, R2E	Section 1 T17N, R2E
Section 11 T17N, R2E	Section 12 T17N, R2E

SECTION CORNER RECORD

SE 700-1200

BOONE COUNTY SURVEYOR'S OFFICE

State Plane grid coordinates NAD83 (NSRS 2007) Indiana West zone:

Corner 1: North: 1710230.43 East: 3189011.60 (U.S. survey feet)

Corner 2: North: 1710252.67 East: 3189012.03 (U.S. survey feet)

Type of monument: Harrison, 4" disk 'Section Corner'

Depth: flush with adjacent road and ground, respectively

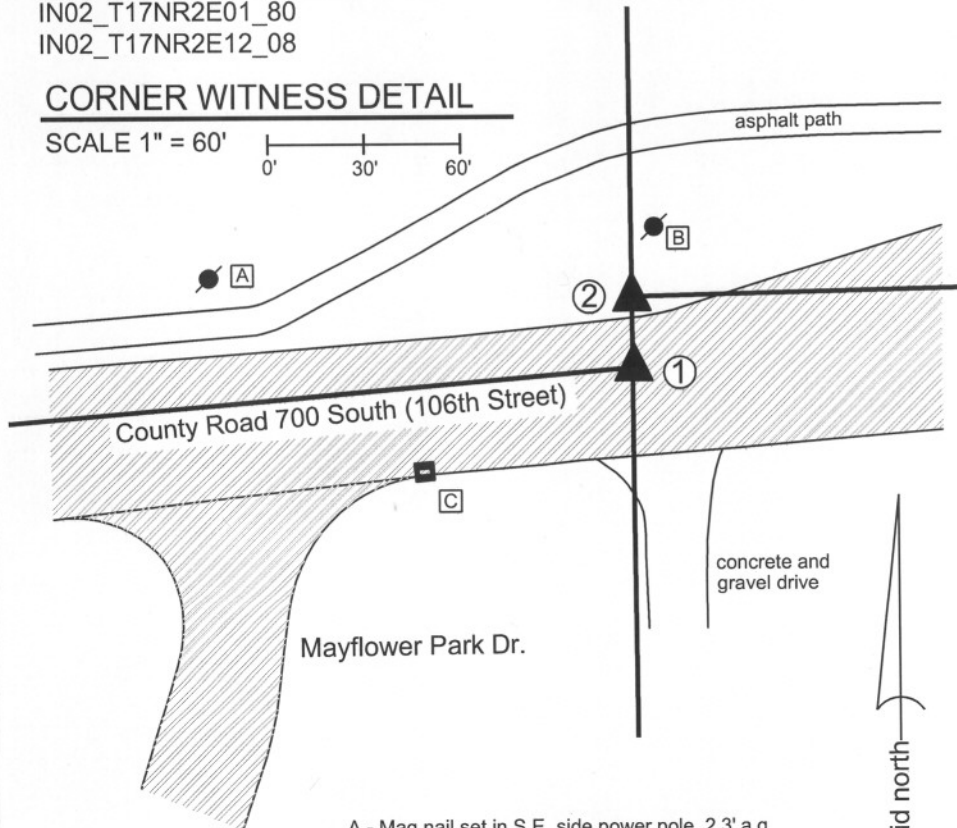
Indiana tie card references:

IN02_T17NR2E01_80

IN02_T17NR2E12_08

CORNER WITNESS DETAIL

SCALE 1" = 60'



- A - Mag nail set in S.E. side power pole, 2.3' a.g. 132.99' to corner 1, 130.71' to corner 2
- B - Mag nail set in S.W. side power pole, 2.5' a.g. 42.11' to corner 1, 20.16' to corner 2
- C - chiseled + on casting, N.E. corner, grate inlet 69.59' to corner 1, 82.08' to corner 2

- ① S.E. Corner, Section 1
N.E. Corner, Section 12
T 17 N, R 2 E
- ② S.W. Corner, Section 6
N.W. Corner, Section 7
T 17 N, R 3 E

Boone County witness mark is a 3/8" diameter x 2' long rebar bearing a metal cap stamped "Boone County Witness Point."

Distance between monuments: 22.24'
Original federal closing distance: 5.28' (8 links)

The Harrison monuments at both corners were set in calculated positions, in place of rebars formerly occupying such positions prior to road construction.

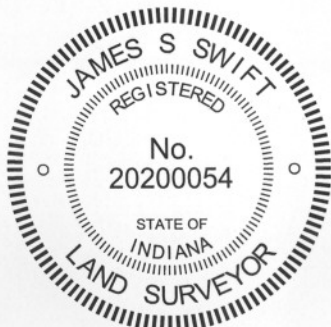
The original federal closing information from the survey of township 17 north, range 3 east places corner 2 at 8 links (5.28 feet) south of corner 1. The plat of Park Northwestern (Hamilton County, Plat Book 8, pp. 128-132) shows corner 1 as a cut "X" in concrete and states, with respect to corner 2, "Stone found with "X" and "S-7" (apparently disturbed) reset 5.28' (8 links) N. of NE cor. sec. 12-17-2. A Hamilton County tie card dated November 16, 1976, generally agrees with this statement.

A Boone County tie card dated March 6, 1991 shows corner 1 as a 5/8 inch rebar 4 feet south of the physical center of pavement. Numerous surveys recorded in the Boone County Recorder's Office, including the preliminary surveys for the adjacent industrial subdivisions, show corner 1 as the same 5/8 inch rebar and show corner 2 as a rebar, some of which also show a rebar at corner 2 at 22.64 feet north of the rebar at corner 1.

Clearly the various records are in conflict, both in terms of the orientation of the corners relative to each other and the distance between them. No information was found which could reliably identify the source for any of the modern monuments. It is noted that the references to the stone at corner 2 state that it was found disturbed and replaced in a new position.

The adjacent subdivisions in Boone County appear to hold the rebar shown on the 1991 tie card as marking corner 1. The adjacent subdivisions in Hamilton County appear to hold the corner as reestablished with the plat of Park Northwestern for corner 2. In the spring of 2007, prior to significant road construction, rebars were found at both corners, the positions of which were in general agreement with the ties from each county.

Both Harrison monuments were set on September 7, 2011 with representatives of the Boone County and Hamilton County Surveyor's Offices present. The Harrison monument at corner 1 (Boone County) was set in place of a 5/8 inch rebar which is believed to be the same monument as shown on the 1991 tie card and held by many private surveys. The Harrison monument at corner 2 (Hamilton County) was set in place of a rebar with a yellow plastic cap found in 2007. The position of this monument does not precisely fit with the 22.64 distance shown on surveys or with the computed location of the corner relative to the geometry shown on the plat of Park Northwestern, as reconstructed relative to centerline and other perimeter monumentation. It is estimated that the Harrison set at corner 2 is 1.0 foot west and 0.4 foot south of the corner as shown on the plat of Park Northwestern. It is also noted that this monument is 0.6 foot east of the range line as defined by the standard corners adjacent to and one half-mile north of the corner.



Kenneth E. Hedge
Kenneth E. Hedge, County Surveyor

James S. Swift
James S. Swift, IN LS 20200054
January 15, 2013

Eagle Twp Clay Twp
Boone Co. Hamilton Co.

Section 1 T17N, R2E	Section 6 T17N, R3E
Section 12 T17N, R2E	Section 7 T17N, R3E