

SECTION CORNER RECORD

BOONE COUNTY SURVEYOR'S OFFICE

SE 600-500



State Plane grid coordinates NAD83 (NSRS 2007):

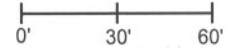
North: 1714436.16 East: 3151447.14 (U.S. survey feet) (standard corner)

North: 1714436.93 East: 3151473.53 (U.S. survey feet) (closing corner)

Type of monument: Harrison, 4" disk 'Section Corner'
 Depth: Approximately 3 inches above adjoining grade.

CORNER WITNESS DETAIL

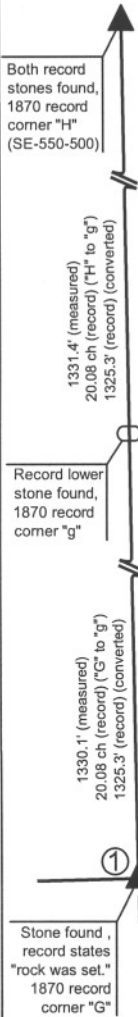
SCALE 1" = 60'



Indiana tie card references:

IN02_T17NR1E01_08 IN02_T17NR1E02_00
 IN02_T18NR1E35_80 IN02_T18NR1E36_72

- A - Boone County witness mark, flush, 32.59' to corner 1, 34.76' to corner 2
- B - Mag nail set in W. side wood post, 2.0' a.g., 36.3' to corner 1, 10.0' to corner 2
- C - 5/8" capped rebar (Dodge), flush, 9.4' to corner 1, 17.2' to corner 2
- D - Boone County witness mark, flush, 26.43' to corner 1, 22.33' to corner 2

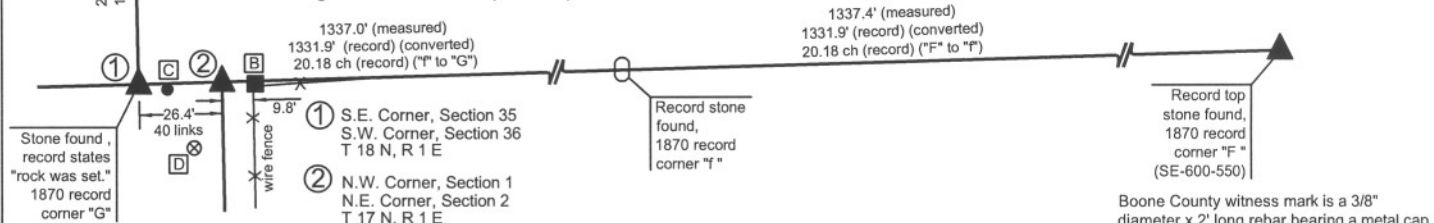


The harrison monument at corner 1 was set in place of a stone found. The harrison monument at corner 2 was set at a calculated position. Corner 1 is addressed in a BCS record dated November 14 & 15, 1870 for section 36 and corner 2 is addressed in a matching record of November 15, 1870 for section 1. These records demonstrate that stones were set at the south quarter corner (F), southwest corner (corner 1 herein) and west quarter corner (H) of section 36 and the quarter-quarter corners on the south and west lines, between the respective corners mentioned above (corners g and f). The record also demonstrates that a stone was set at the north quarter corner of section 1 and the quarter-quarter corner on the north line of section 1 to the west. The record does not state if a monument was set or found at the northwest corner of section 1 (corner 2 herein), but does show measurements to it. All stones but the southwest corner of section 36 (corner 1) are specifically described. The southwest corner of section 36 (corner 1) simply states "rock was set." All of the specifically described stones were found, generally undisturbed and match the record description. A stone found which has the characteristics of a corner stone was found and accepted as marking the southwest corner of section 35 (corner 1.) As shown on the sketch, the relative positions of the found stones fit very well. All measured dimensions are longer than the record dimensions shown in 1870 record, but, as demonstrated on the sketch, they are proportionally very similar. The positional uncertainty of the southwest corner of section 36 relative to the other found monuments is approximately 0.4 foot in the east-west dimension and 1.3 feet in the north-south dimension. This is considered to represent minimal uncertainty in the reconstruction of the 1870 survey. It is also noted that the southwest corner of section 36 is situated at the southerly extension of an old fence to the north and slightly north of the westerly extension of an old fence to the east.

The stone found at the southwest corner of section 36 was found at 18 inches deep, firmly set in the clay layer below the top soil, protruding into the top soil by approximately 4 inches. The stone was 11 inches tall by 11 inches N-S by 4 inches E-W, was vertical as found with a distinct smooth ridge at the top, oriented N-S, and a specific high point of the ridge. The high point was held as the corner. This stone was found at the southwest corner of evidence of an old corner post in the form of a ring of rocks which appear to have been brace rocks, surrounding a space in which fragments of wood and fence were found. The actual post appears to have rotted, but fragments of wood were found in the clay layer below the top soil. Fragments of fence to the east and north were found in the top soil. The specific stone held as the corner stone was set slightly apart from the general ring of stones and its shape, depth and orientation (vertical and N-S) lend to the appearance of being the corner stone.

The presence of the stone, the evidence of the post and position of the stone relative to the other found stones described in 1870 record leaves minimal question as to whether the corner established in 1870 was found and perpetuated. However, recent surveys have held a position approximately 9.8 feet east for the corner. This is due to the relative position of two north-south fences. The fence going north from corner 1 has been removed in the immediate vicinity of the corner and the southern end of the remaining portion of the fence is approximately 130 feet north of the corner. The fence extends north from that point for approximately 1600 feet until it is interrupted by an open drain. The fence to the south from the vicinity of corner 2 is visible at the north end with a clear corner post where it intersects the east-west fence. This fence extends south for only approximately 500 feet until it is also interrupted by an open drain. Previous surveys, including a survey recorded in Survey Book 5, page 50 in the Boone County Recorder's Office, have held either the corner post at the northerly terminus of this fence or a rock at the base of the corner post as corner 2 and have established corner 1 at the record closing distance of 40 links (26.4 feet) west. This is not an unreasonable interpretation of the visible evidence at the corner, as the fence to the south is present and visible at the corner and the fence to the north is not. However, the discovery of the evidence from the 1870 record makes clear that the southwest corner of section 36 (corner 1) falls in line with the fence to the north. Analysis of the measurements shown on that record also makes clear that the original closing distance of 40 links was held in 1870 and that the northwest corner of section 1 (corner 2) should be established at 40 links east of corner 1. Hence, the fence to the south is approximately 9.8 feet east of corner 2.

The stone found and accepted as marking corner 1 was replaced with a harrison monument. Another harrison monument was set on the township line at the record closing distance of 40 links (26.4 feet) east.



Boone County witness mark is a 3/8" diameter x 2' long rebar bearing a metal cap stamped "Boone County Witness Point."



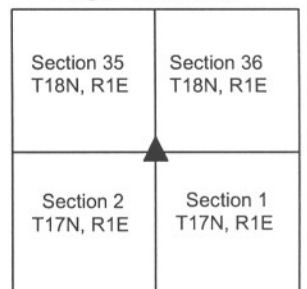
Kenneth E. Hedge
 Kenneth E. Hedge, County Surveyor

James S. Swift

James S. Swift, IN LS 20200054

July 14, 2010

Eagle Township



PHOTOGRAPHIC DOCUMENTATION

Date of photography: May 22 - June 9, 2009

Corner 1: the hole where evidence of the old corner post was found, with the brace rocks which were removed from the hole.



Corner 1: the stone found and held as marking the corner. View from above with photo oriented showing the distinct N-S ridge and high point. This stone had not yet been found when the photo to the left was taken.



Corner " f ": stone found, described in the 1870 record as "set rock full of seams, white spots, etc."



Corner " g ": Stone found next to corner post. The stone matches the description in the 1870 record as being "5,4,3 1/2 +."



Corner 1: the harrison monument set. View from the north.



Corner 2: the harrison monument set and the corner post 9.8 feet east. View from the N.W.



For details and documentation, refer to related sheet "Section Corner Record."

SECTION CORNER RECORD

SE 600-550

BOONE COUNTY SURVEYOR'S OFFICE

State Plane grid coordinates NAD83 (NSRS 2007):

North: 1714514.09 East: 3154120.42 (U.S. survey feet) (corner 1)

Type of monument: Harrison, 4" disk 'Section Corner' (corner 1)

Depth: 2 inches above adjacent ground in concrete pillar

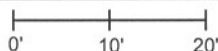
Indiana tie card references:

IN02_T18NR1E36_76

IN02_T17NR1E01_04

CORNER WITNESS DETAIL

SCALE 1" = 20'

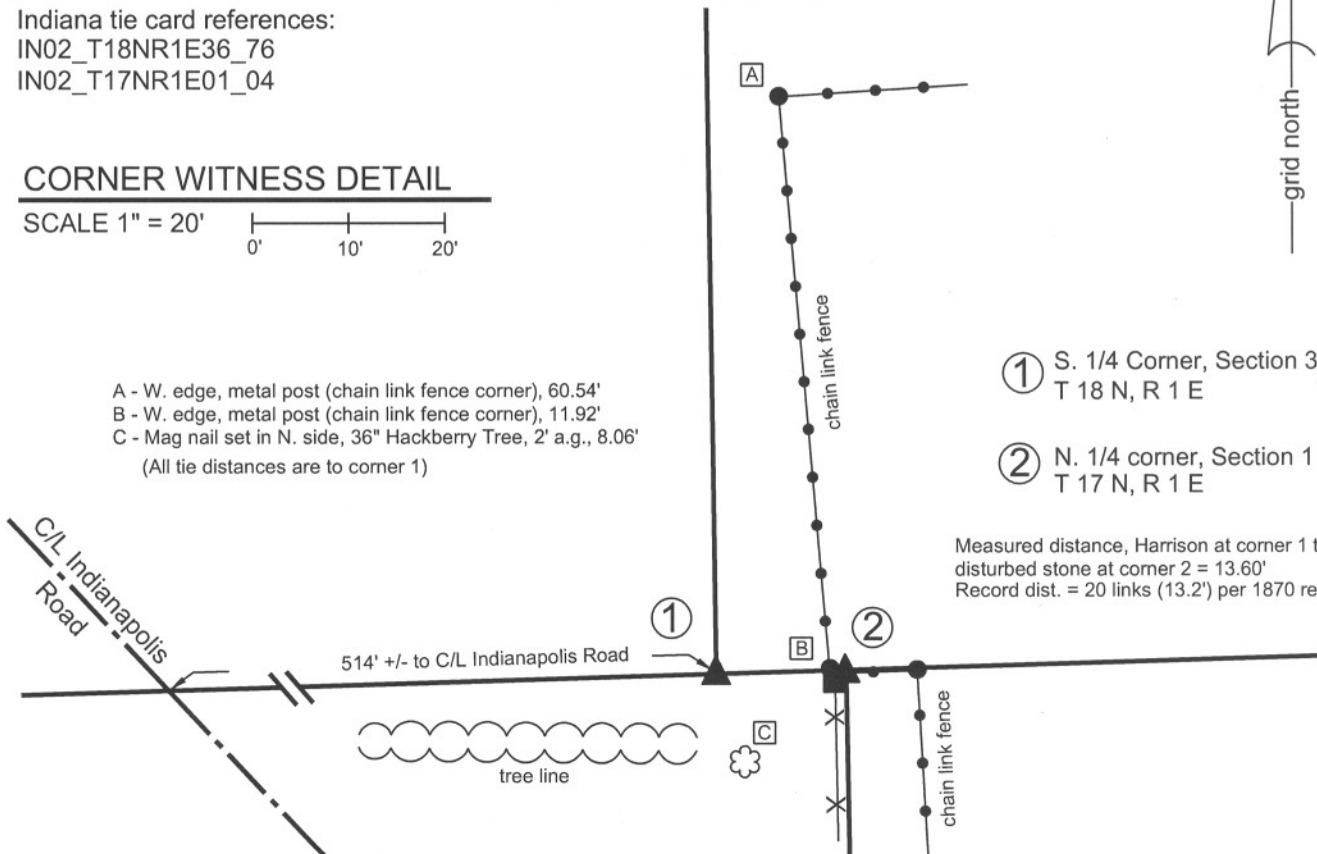


- A - W. edge, metal post (chain link fence corner), 60.54'
 - B - W. edge, metal post (chain link fence corner), 11.92'
 - C - Mag nail set in N. side, 36" Hackberry Tree, 2' a.g., 8.06'
- (All tie distances are to corner 1)



- ① S. 1/4 Corner, Section 36
T 18 N, R 1 E
- ② N. 1/4 corner, Section 1
T 17 N, R 1 E

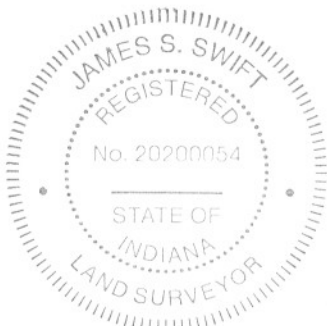
Measured distance, Harrison at corner 1 to disturbed stone at corner 2 = 13.60'
Record dist. = 20 links (13.2') per 1870 record.



The harrison monument was set in place of a stone found.

BCS records of November 14-15, 1870 state "Reestablished from stumps of both trees. Set a rough Rock. 10,8,6 +. Top one 18, 14,6 +." (S1/4 corner 36-18-1E). and "Established 20 links E. of F, Sect. 36. Set Rock. 16, 11, 5 marked +." (N 1/4 corner, 1-17-1E). A BCS tie card dated December 14, 2005 calls for a stone at the N 1/4 corner, 1-17-1E and a wooden fence post at the S. 1/4 corner, 36-18-1E. This corner was excavated on September 17, 2008. The above ground portion of the post shown on the 2005 tie card was found lying on the ground and the base was found intact in the ground. The record top stone was found 1 foot deep against the south edge of the base of the post. The "+" was clearly visible on the top of the stone. The stone was vertical, with the 14 inch dimension E-W and the 6 inch dimension N-S with the flat side of the stone facing North, against the post. The record bottom stone was not found. It is plausible that both stones were removed at the time the post was set and only the top stone was replaced. The stone did not appear to be acting as a brace rock, as no fence would have been attached to the post towards the south, the depth was not sufficient to properly brace the post and no other bracing rocks were found around the post. The stone did have several characteristics of a corner stone in the form of vertical placement, orientation in cardinal directions and etched "+" on top. The harrison monument was set in place of the etched "+" on the stone. The stone to the east has been severely disturbed due to the installation of a large metal corner post for a chain link fence. This corner is not an original federal corner and the stone was left in place, disturbed.

The south quarter corner of section 36, T 18 N, R 1 E was originally established as a wood post in 1819.

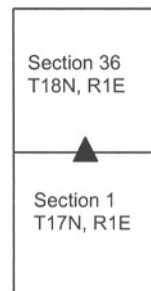


Kenneth E. Hedge
 Kenneth E. Hedge, County Surveyor

James S. Swift
 James S. Swift, IN LS 20200054

March 11, 2009

Perry Township



PHOTOGRAPHIC DOCUMENTATION

Date of photography: September 18, 2008

Corner stone, fragments of in-ground base of post and broken off bottom of above ground portion of post, lying to the east of the stone. Overhead view from south.



Corner stone, fragments of in-ground base of post and broken off bottom of above ground portion of post, lying to the east of the stone. Overhead view from north.



Close-up of the stone and fragments of in-ground portion of post at the north edge of the stone.



Same picture as to the left with the etched "+" on the top of the stone enhanced for ease of visual detection.



For details and documentation, refer to related sheet "Section Corner Record."

SECTION CORNER RECORD

SE 650-500

BOONE COUNTY SURVEYOR'S OFFICE

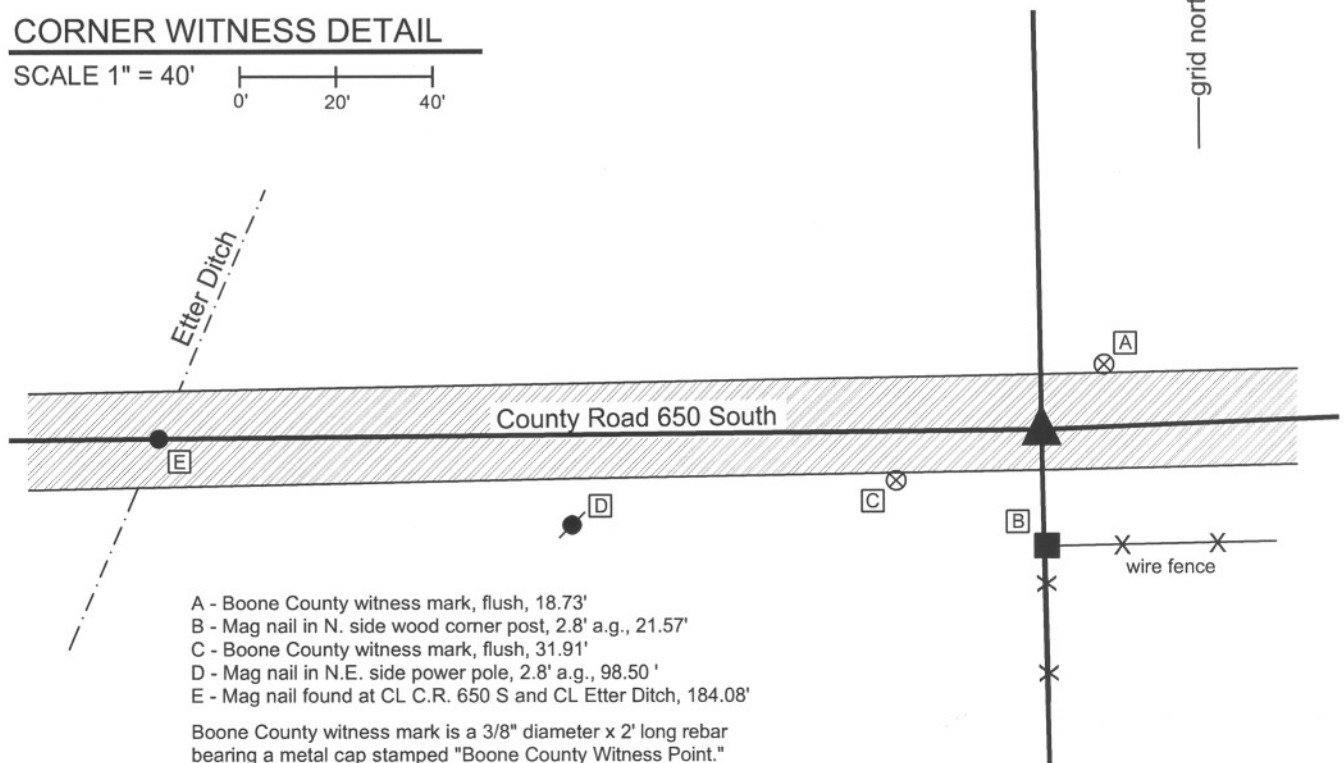
State Plane grid coordinates NAD83 (NSRS 2007):
North: 1711680.47 East: 3151528.73 (U.S. survey feet)

Type of monument: Harrison, 4" disk 'Section Corner'
Depth: One inch below adjacent road surface

Indiana tie card references:
IN02_T17NR1E01_36
IN02_T17NR1E02_44

CORNER WITNESS DETAIL

SCALE 1" = 40'
0' 20' 40'



The harrison monument was set in place of a P.K. nail and railroad rail found. A BCS record of September 6, 1901 states "Found stone in center of road, fences indicated corner." A BCS tie card of April 20, 1970 states "found stone" and also demonstrates an "R" adjacent to the corner, likely indicating a railroad rail set. This corner was excavated on October 27, 2009. Prior to excavation, a P.K. nail was visible at the surface of the road. Excavation revealed two small stones in the gravel layer of the road, both below the P.K. Nail, one at 7 inches deep and the other at 10 inches deep. The railroad rail was found at 14 inches deep. No stone was found and it was concluded that the stone was likely removed in 1970 and replaced with the rail, as was a common practice by field crews from this office at that time. The P.K. nail was over the top portion of the rail (i.e. part the train tracks would touch if it were horizontal and in use as an actual railroad rail), rather than the neck (thin portion) of the rail as is commonly seen. The harrison was set in the position of the P.K. Nail, over the rail. This corner was originally established as a wood post in May, 1820.

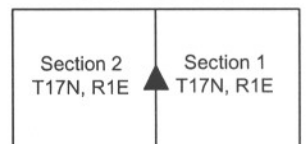


Kenneth E. Hedge
Kenneth E. Hedge, County Surveyor

James S. Swift
James S. Swift, IN LS 20200054

March 11, 2009 Revised July 14, 2010

Perry Township



SECTION CORNER RECORD

SE 650-600

BOONE COUNTY SURVEYOR'S OFFICE

State Plane grid coordinates NAD83 (CORS96):

Corner 1: North: 1711890.82 East: 3156776.32 (U.S. survey feet)

Corner 2: North: 1711863.82 East: 3156776.86 (U.S. survey feet)

Type of monument: Harrison, 4" disk 'Section Corner'

Depth: Flush with adjacent ground.

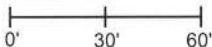
Indiana tie card references:

IN02_T17NR1E01_44

IN02_T17NR2E06_36

CORNER WITNESS DETAIL

SCALE 1" = 60'



① E. 1/4 corner, Section 1
T 17 N, R 1 E

② W. 1/4 corner, Section 6
T 17 N, R 2 E

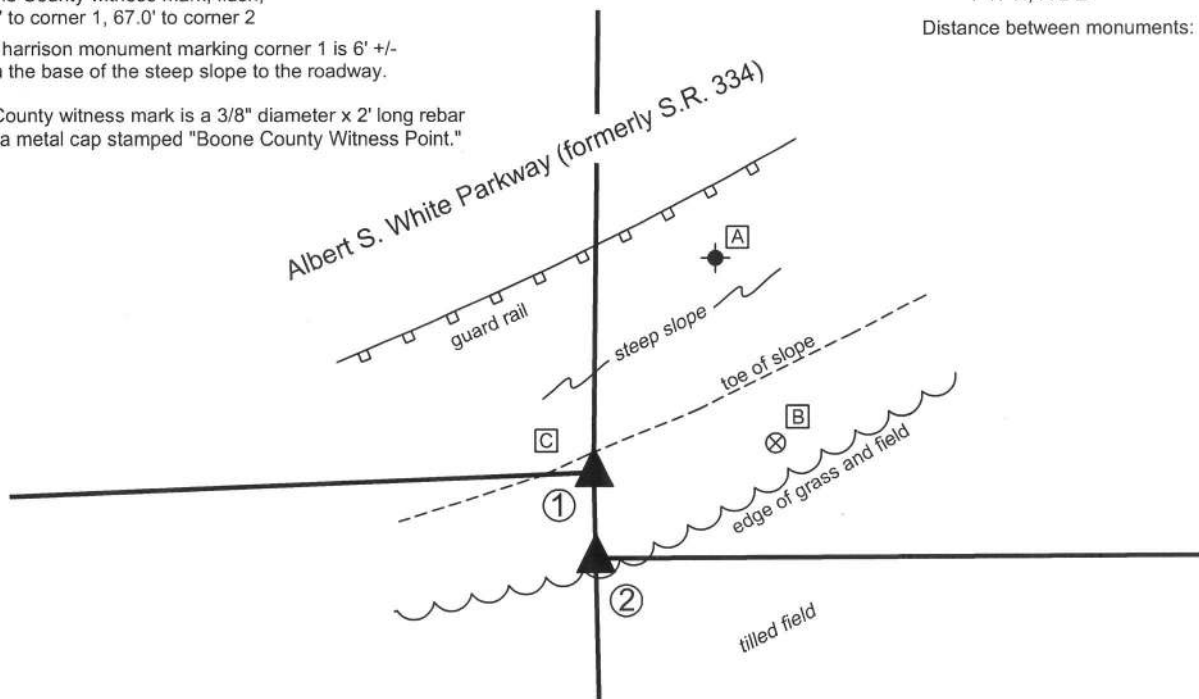
Distance between monuments: 27.01'

A - Southwesterly most bolt, base of Road sign (Chicago - Indianapolis)
77.1' to corner 1, 101.2' to corner 2.

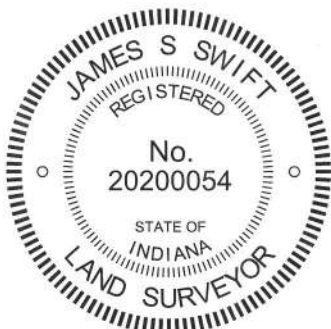
B - Boone County witness mark, flush,
57.8' to corner 1, 67.0' to corner 2

C - The harrison monument marking corner 1 is 6' +/-
from the base of the steep slope to the roadway.

Boone County witness mark is a 3/8" diameter x 2' long rebar
bearing a metal cap stamped "Boone County Witness Point."



See page 2 for written documentation
and explanation of findings.



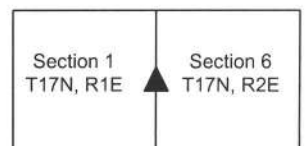
Kenneth E. Hedge
Kenneth E. Hedge, County Surveyor

James S. Swift
James S. Swift, IN LS 20200054

February 5, 2015

Page 1 of 2

Eagle Township



SECTION CORNER RECORD

SE 650-600

BOONE COUNTY SURVEYOR'S OFFICE

The harrison monuments were set in place of harrison monuments found.

This set of corners falls on the range line between ranges 1 and 2 east, 1/2 mile south of the township corner. It would be expected that the corners would fall generally along a straight line between the corners to the north and south, but they fall significantly west of the straight line. Investigation of the old records indicates that this misalignment has been in place since at least 1861.

Corner 1 is an original corner, having been set by the federal surveyors on October 28, 1819. Corner 2 is not an original corner, was never set by the federal surveyors, and should be located along the range line at the same offset distance as was established at the southwest corner of section 6. The first mention of these corners in the old BCS Surveyor's Record is in a record dated December 28, 1861 which states, with respect to corner 2, "From D to H 84.66 being 64 links gain on the original estimated increase." This is interpreted to mean that the distance from the East Quarter corner of section 6 to the west quarter corner of section 6 was 64 links longer than expected and noted on the plats of the section. This is notable, as corner 2 falls approximately 42 feet west of the straight line (64 links = 42.24 feet). The next time the corners are mentioned is a record of October 28, 1865 which states, with respect to corner 2 "Moved 12 1/2 links south and reestablished there so as to make the lap the same as it is at the SW corner of the section. Set a Rock 22.20 by 11 in marked + on top." Corner 1 is mentioned in a record of April 5, 1875, which states "Reestablished. Set two Rocks one 12,5,2 1/2 + Top One 11,10,6 marked +." Corner 2 is mentioned again as the point of commencing for a parcel description in a record dated November 5-6, 1875. Analysis of the old records indicates that, as of 1875, the corners were approximately 42 feet further west than expected, but held in such position, and were at the same offset distance as was recorded as the southwest corner of section 6, being 46 links or 30.36 feet.

BCS tie cards referencing both of these corners, signed by Cary Dodge and dated 2004, show the corners as being harrison monuments 27.03 feet apart. A survey by Anderson and Associates, signed Cary Dodge, dated December 1993 was found recorded with a deed in Deed Record 249, pages 394-397 in the Boone County Recorder's Office. This survey shows corner 1 as a buried steel post. Analysis of this survey indicates that the harrison monument at corner 1 was set at the position of the buried steel post. A survey by BCI Land Surveyors, signed by Alan B. Cleveland and recorded in Survey Book 2, page 18 shows corner 1 at a calculated position with respect to the plans for I-65 and a fence to the north of the interstate. Analysis of this survey indicates that the calculated position falls approximately 1 foot west of the harrison monument at corner 1. A survey by American Consulting, Inc. signed by Gordon L. Richardson, including a survey recorded in Survey Book 8, page 37 show corner 1 as being in conformity with the aforementioned BCI survey and corner 2 at 1/2 of the closing distance at the S.W. corner of section 6. This treatment of the relative position of the two corners does not conform to the accepted treatment of the west quarter corner of section 6 and does not conform with any other known documentation or evidence. A survey by Kimbley and Proctor signed by David B. Holley and recorded in Survey Book 3, page 42 shows the south line of the northwest quarter of section 6 as coincident with the center of County Road 650 South. The plat of Amherst Meadows at Royal Run, Section 1, shows the north line of the southwest quarter of section 6 being in County Road 650 South. The harrison monument found at corner 2 fits with this interpretation, being at the westerly prolongation of the center of C.R. 650 South, and fits with monumentation found in the road and also fits with centerline control monumentation found in Amherst Meadows which is shown as tied the quarter section line.

Significant excavation was not performed at these corners as there is ample evidence of disruption of the original ground due to the construction of an elevated roadway immediately north of the corners and it is not expected that the stones are still present. The conclusions of the above stated observations are that the harrison monument at corner 1 fits within one foot of the recorded surveys referencing it, and that its position at 42 feet west of the straight line between the southeast and northeast corners of section 1 fit the the 1861 reference. The distance between the two monuments is approximately 3 feet less than called for in the 1865 record but the position of the harrison at corner 2 fits with the monumentation along and tied to the section line to the east. General uncertainties of 3 feet north-south and 1 foot east-west are attributed to the positions of the monuments as found. No compelling evidence was found to relocate the existing monuments. Both monuments were removed, as they were not physically set in a manner which would ensure long term stability. New harrison monuments were set in the same positions in substantially more concrete.

SECTION CORNER RECORD

SE 700-500

BOONE COUNTY SURVEYOR'S OFFICE

State Plane grid coordinates NAD83 (NSRS 2007):

North: 1709024.83 East: 3151584.84 (U.S. survey feet)

Type of monument: Harrison, 4" disk 'Section Corner'

Depth: 2 inches above adjoining ground in concrete pillar

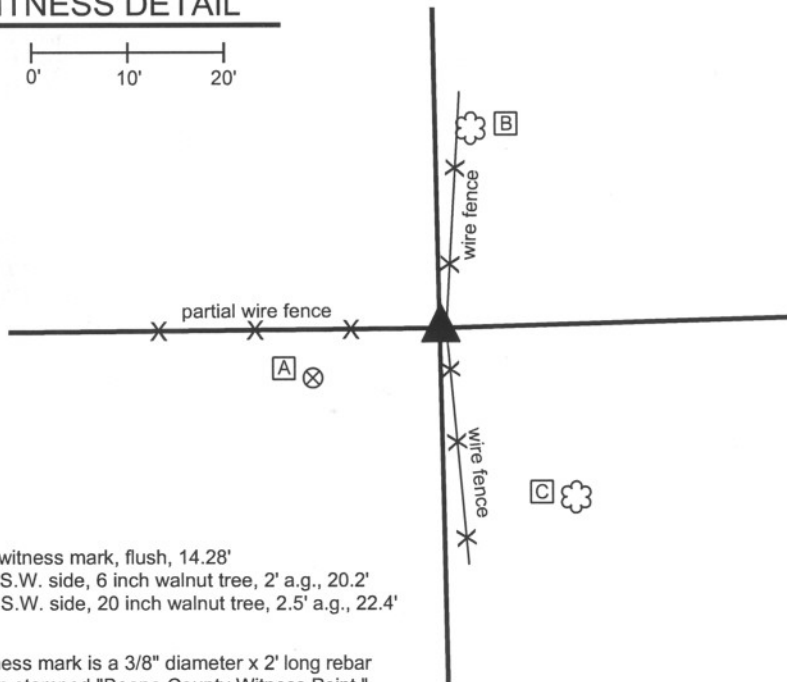
Indiana tie card references:

IN02_T17NR1E01_72 IN02_T17NR1E02_80

IN02_T17NR1E11_08 IN02_T17NR1E12_00

CORNER WITNESS DETAIL

SCALE 1" = 20'



- A - Boone County witness mark, flush, 14.28'
- B - Mag nail set in S.W. side, 6 inch walnut tree, 2' a.g., 20.2'
- C - Mag nail set in S.W. side, 20 inch walnut tree, 2.5' a.g., 22.4'

Boone County witness mark is a 3/8" diameter x 2' long rebar bearing a metal cap stamped "Boone County Witness Point."

The harrison monument was set in place of the base of an old cedar corner post found.

A BCS record of March 11, 1915 states "Found Rock at Corner." No BCS tie cards were found for this corner. An old, round, wood corner post is visible at the intersection of fences to the North, South and West. The base of an older, 6 inch by 6 inch cedar post was found immediately west of this post. A small rock, measuring approximately 6x3x4 inches was found against the west edge of the base of the old cedar post. No other rocks were found in the immediate vicinity of this corner. The base of the cedar post was accepted as the best available evidence of the original location of the corner. The post was partially removed and the harrison monument was set in the position of the post.

This corner was originally established as a wood post in May, 1820.



Kenneth E. Hedge
Kenneth E. Hedge, County Surveyor

James S. Swift

James S. Swift, IN LS 20200054

March 11, 2009, Revised July 14, 2010

Perry Township

Section 2 T17N, R1E	Section 1 T17N, R1E
Section 11 T17N, R1E	Section 12 T17N, R1E

PHOTOGRAPHIC DOCUMENTATION

Date of photography: April 28, 2008

Base of old cedar post exposed.
View from northwest.



Current corner post and base of old cedar post.
View from southwest.



For details and documentation, refer to
related sheet "Section Corner Record."

SECTION CORNER RECORD

SE 700-550

BOONE COUNTY SURVEYOR'S OFFICE

State Plane grid coordinates NAD83 (NSRS 2007):

North: 1709101.74 East: 3154220.20 (U.S. survey feet)

Type of monument: Harrison, 4" disk 'Section Corner'

Depth: 3 inches above adjacent ground

Indiana tie card references:

IN02_T17NR1E01_76

IN02_T17NR1E12_04

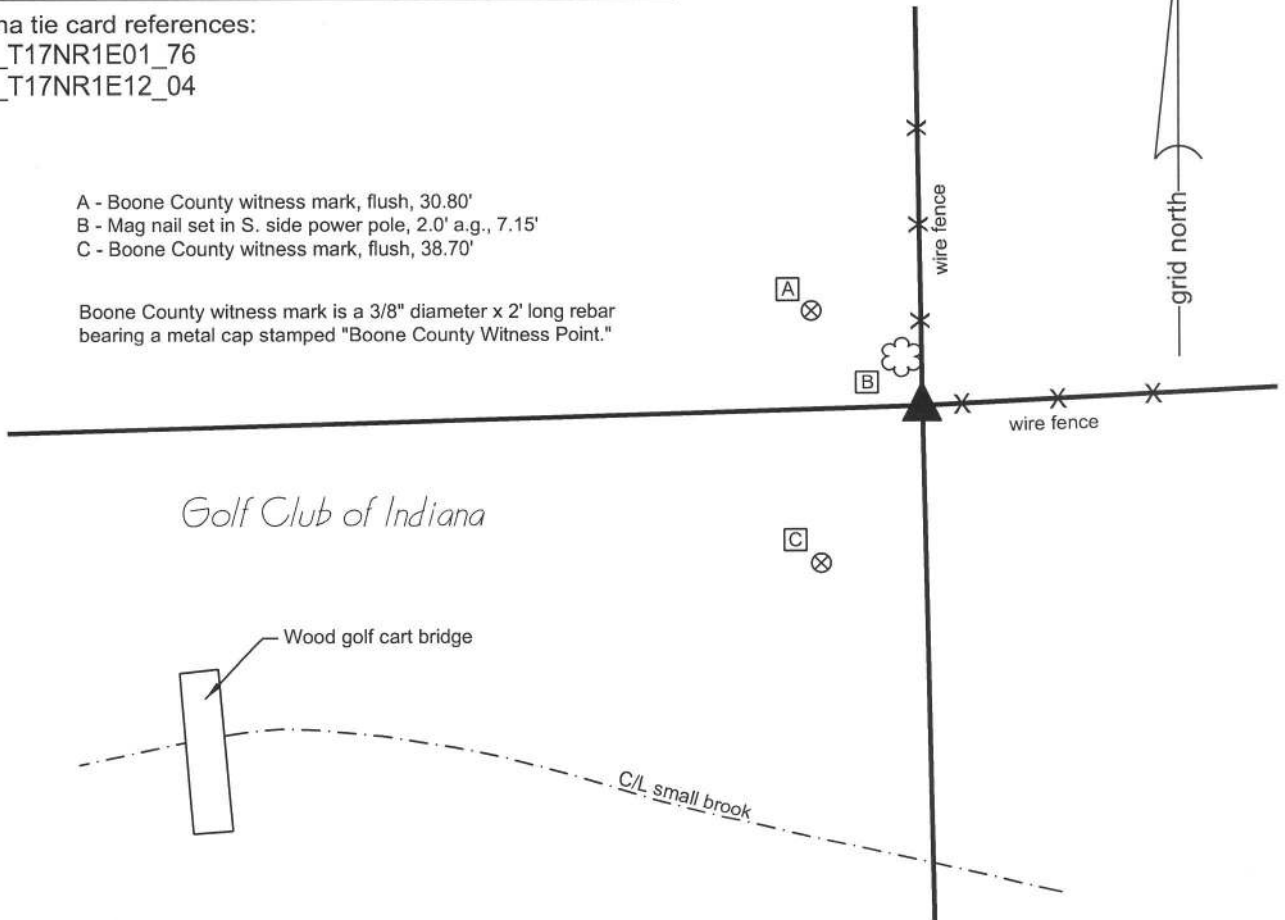
CORNER WITNESS DETAIL

SCALE 1" = 40'

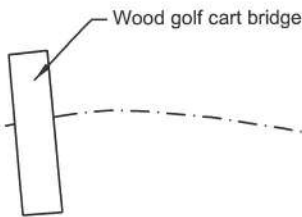


- A - Boone County witness mark, flush, 30.80'
- B - Mag nail set in S. side power pole, 2.0' a.g., 7.15'
- C - Boone County witness mark, flush, 38.70'

Boone County witness mark is a 3/8" diameter x 2' long rebar bearing a metal cap stamped "Boone County Witness Point."



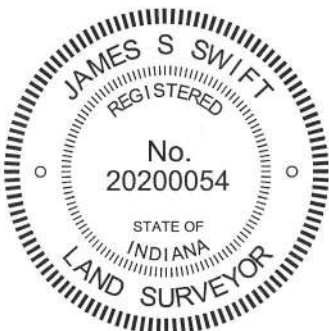
Golf Club of Indiana



The Harrison monument was set in place of a stone found.

This corner is not specifically described in the BCS Surveyor's Record. It is mentioned as the terminal point for measurements in 1837, 1839 and 1853. No recent BCS tie cards were found referencing this corner. This corner was excavated on August 17, with further excavation and final monumentation performed on August 31, 2009. Prior to excavation a wood corner post was visible at the intersection of fences to the north and east. The position of this post fits well relative to surrounding corners. A 5/8 inch rebar with a metal cap stamped "Carl Anderson Prof Engr" was found against the northeast edge of the post. Excavation yielded a rock which appeared to be a base rock against the north edge of the post. Excavation also revealed a rock which does have the characteristics of a section corner stone on the south side of the post at approximately 4 inches below adjoining gea. This stone is set away from the post slightly, hence it is not a brace rock. It measured 13 inches E-W by 7 inches N-S and was 11 inches tall, oriented in cardinal directions. The stone was removed and the Harrison monument was set in its place. The post was left in place but is broken off at the base. The top portion of the post is suspended within the wires attached to it and was pushed slightly to the north from its original position.

This corner was originally established as a wood post in June, 1820.



Kenneth E. Hedge
 Kenneth E. Hedge, County Surveyor

James S. Swift
 James S. Swift, IN LS 20200054
 July 14, 2010, Revised March 7, 2013

Perry Twp



PHOTOGRAPHIC DOCUMENTATION

Date of photography: August 17 - September 2, 2009

The corner post, prior to excavation.
View from the southwest.



The corner post and rebar, prior to excavation.
View from the northeast.



The stone at the base of the corner post.
View from the southwest.



The harrison monument set in place of the stone.
Note that the bottom of the post was shifted to the north, see attached notes.



For details and documentation, refer to related sheet "Section Corner Record."

SECTION CORNER RECORD

SE 700-600

BOONE COUNTY SURVEYOR'S OFFICE

State Plane grid coordinates NAD83 (NSRS 2007):

North: 1709230.31 East: 3156831.01 (U.S. survey feet) (standard corner)

North: 1709199.97 East: 3156831.63 (U.S. survey feet) (closing corner)

Type of monument: Harrison, 4" disk 'Section Corner'

Depth: 3 inches above adjoining ground.

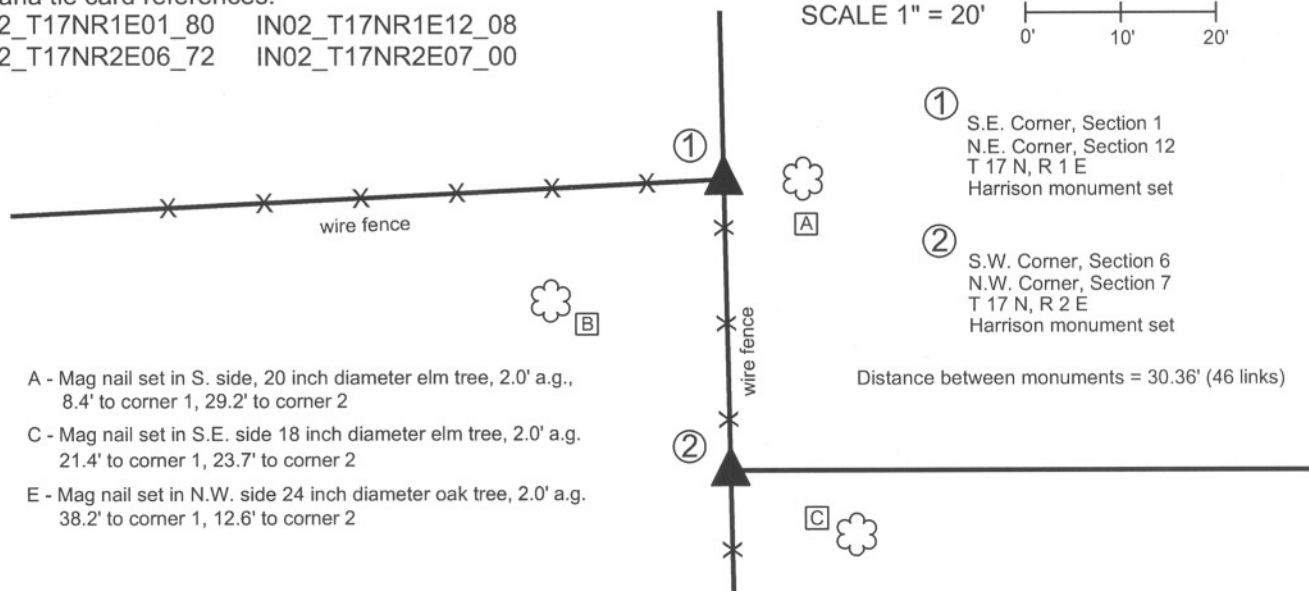
Indiana tie card references:

IN02_T17NR1E01_80 IN02_T17NR1E12_08

IN02_T17NR2E06_72 IN02_T17NR2E07_00

CORNER WITNESS DETAIL

SCALE 1" = 20'



- ① S.E. Corner, Section 1
N.E. Corner, Section 12
T 17 N, R 1 E
Harrison monument set
- ② S.W. Corner, Section 6
N.W. Corner, Section 7
T 17 N, R 2 E
Harrison monument set

Distance between monuments = 30.36' (46 links)

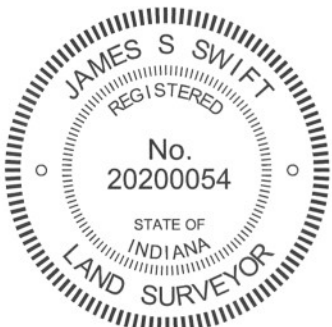
- A - Mag nail set in S. side, 20 inch diameter elm tree, 2.0' a.g.,
8.4' to corner 1, 29.2' to corner 2
- C - Mag nail set in S.E. side 18 inch diameter elm tree, 2.0' a.g.
21.4' to corner 1, 23.7' to corner 2
- E - Mag nail set in N.W. side 24 inch diameter oak tree, 2.0' a.g.
38.2' to corner 1, 12.6' to corner 2

The harrison monument at corner 1 was set in place of a rebar found and over the base of an old wood corner post. The harrison monument at corner 2 was set on the range line connecting corner 1 and the standard corner approximately 1/2 mile south at the record closing distance of 46 links from corner 1.

No specific descriptions of this corner were found in the BCS Surveyor's Record. Corner 1 is mentioned as the terminal point for measurements in records from 1836 and 1901. Corner 2 is mentioned as the terminal point for a measurement in a record of 1865. A tie card dated January 1990 on file in this office, believed to have been provided by the Indiana Department of Transportation, shows corner 1 as a 1/2 inch rebar slightly east of a wood corner fence post.

This corner was excavated on September 1, 2009. Prior to excavation, corner 1 appeared to be marked by a wood corner post with fence to the south and west and a rebar near the northeast corner of the post, per the 1990 tie card. Corner 2 appeared to be marked by two rebars approximately 0.7 of a foot apart and a stone at several inches deep, exposed in a hole. Excavation of the standard corner, being corner 1, revealed several rocks around the post, all of which appeared to be brace rocks for the post and none of which were positively identifiable as section corner stones. Excavation along the east edge of the post did confirm that the post was leaning slightly towards the west. At approximately 2.5 feet deep, the post is directly below the rebar. As the post is leaning towards the west, the rebar set on the east side of the post was directly over the base of the post as situated in the ground. It is not known whether this was intentional or not in the setting of the rebar, but given the common position of the rebar and the bottom of the post, this position was held as marking the corner and a harrison monument was set at the position of the rebar, directly over the base of the post and slightly east of the part of the post which is above ground.

Excavation at corner 2 revealed remnants of an old wood corner post in addition to the two rebars and rock found. The rock which was visible in a hole prior to excavation proved to be along the southeast edge of the old corner post. The rock is not mentioned in the BCS Surveyor's record and did not appear to be a section corner stone, so much as a brace rock. The position of the corner was calculated to be at the original closing distance of 46 links (30.36 feet) south of corner 1 on the line connecting corner 1 with the standard corner approximately 1/2 mile south (See corner SE-750-600). This position fell close to the northwest edge of the old wood corner post. One of the rebars, bearing a metal cap stamped "Carl Anderson, Prof. Engr" was 0.9 foot south and 0.4 foot west of the corner as so established. The other rebar, stamped "American Consulting Engrs, Indpls" was 0.2 foot south and 0.6 foot west of the corner. This variation reflects the approximate difference between the rebar and visible portion of the post at corner 1, as discussed above. The center of the remnants of the old wood post are 1 foot south and 0.5 foot east of the calculated corner. A survey recorded in Survey Book 6, pages 66-67 (Boone County Recorder), by American Consulting, Inc. holds corner 1 as the wood corner post (presumably the portion visible above ground) and does not discuss corner 2, but may be the source of the northerly of the two capped rebars. A survey recorded in Survey Book 6, pages 68-69 by Major Engineering and Land Surveying, Inc. shows corner 2 as the A.C.E. rebar found. A survey recorded in Survey Book 7, page 7 by the Schneider Corporation shows corner 2 as being calculated from the iron pin found at corner 1, by the same method employed herein. A harrison monument was set at the position of the corner calculated with respect to corner 1 and the record closing distance of 46 links, as discussed above.



Kenneth E. Hedge
Kenneth E. Hedge, County Surveyor

James S. Swift
James S. Swift, IN LS 20200054
March 30, 2012

Perry Twp Eagle Twp

Section 01 T17N, R1E	Section 6 T17N, R2E
Section 12 T17N, R1E	Section 7 T17N, R2E