

SECTION CORNER RECORD

NE 750-100

BOONE COUNTY SURVEYOR'S OFFICE

State Plane grid coordinates NAD83 (CORS96):

North: 1785238.54 East: 3129656.75 (U.S. survey feet)

Type of monument: Harrison, 4" disk 'Section Corner'

Depth: One inch below adjacent road surface

Indiana tie card references:

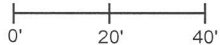
IN02_T20NR1E29_36

IN02_T20NR1E36_44



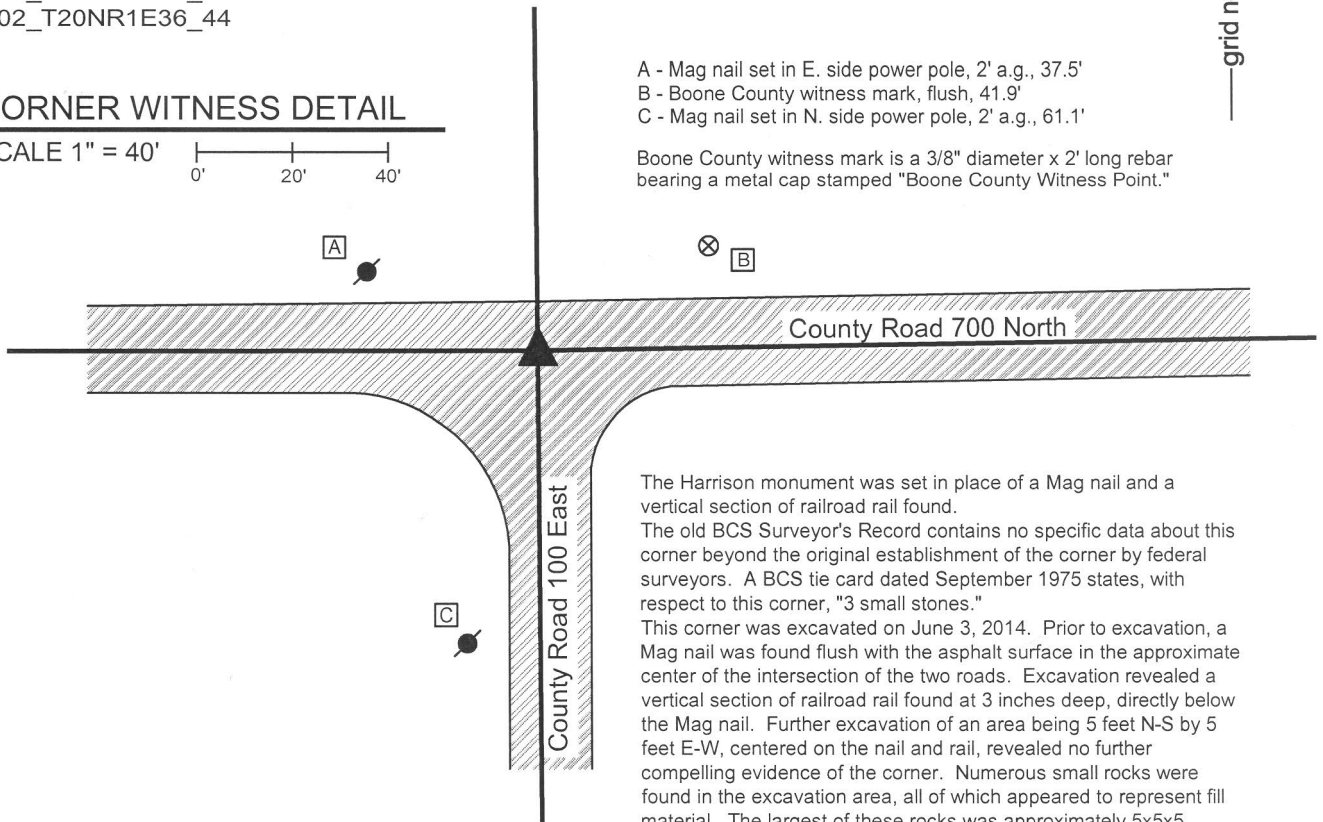
CORNER WITNESS DETAIL

SCALE 1" = 40'



- A - Mag nail set in E. side power pole, 2' a.g., 37.5'
- B - Boone County witness mark, flush, 41.9'
- C - Mag nail set in N. side power pole, 2' a.g., 61.1'

Boone County witness mark is a 3/8" diameter x 2' long rebar bearing a metal cap stamped "Boone County Witness Point."



The Harrison monument was set in place of a Mag nail and a vertical section of railroad rail found.

The old BCS Surveyor's Record contains no specific data about this corner beyond the original establishment of the corner by federal surveyors. A BCS tie card dated September 1975 states, with respect to this corner, "3 small stones."

This corner was excavated on June 3, 2014. Prior to excavation, a Mag nail was found flush with the asphalt surface in the approximate center of the intersection of the two roads. Excavation revealed a vertical section of railroad rail found at 3 inches deep, directly below the Mag nail. Further excavation of an area being 5 feet N-S by 5 feet E-W, centered on the nail and rail, revealed no further compelling evidence of the corner. Numerous small rocks were found in the excavation area, all of which appeared to represent fill material. The largest of these rocks was approximately 5x5x5 inches and did not appear to represent evidence of the corner. Excavation was performed to 24 inches deep, several inches into the clay layer below the road.

It is not known whether the "small stones" found in 1970 represented better evidence of the corner than the small stones found in 2014. It is believed that any stones which may have been found in 1970 would have been removed and replaced with the rail, as was a common practice of BCS field crews from that era. Given the lack of contrary evidence and previous acceptance of the railroad rail, the rail was accepted as the best available evidence of the corner. The rail and nail were both removed during excavation and replaced with a Harrison monument set in the same position.

This corner was originally established as a wood post in 1822.

Kenneth E. Hedge
Kenneth E. Hedge, County Surveyor

James S. Swift
James S. Swift, IN LS 20200054
March 27, 2015

