

# SECTION CORNER RECORD

## BOONE COUNTY SURVEYOR'S OFFICE

NE 100-100

State Plane grid coordinates NAD83 (CORS96):

North: 1750906.16 East: 3129844.97 (U.S. survey feet)

Type of monument: Harrison, 4" disk 'Section Corner'

Depth: One inch below adjacent road surface

Indiana tie card references:

IN02\_T19NR1E30\_80 IN02\_T19NR1E29\_72

IN02\_T19NR1E31\_08 IN02\_T19NR1E32\_00

### CORNER WITNESS DETAIL

SCALE 1" = 40'

- A - Boone County witness mark, flush, 28.54'
- B - Mag nail found in W. side, wood corner post, 3 in. a.g., 34.65'
- C - Mag nail found in N. side power pole, 4 in. a.g., 15.20'
- D - Mag spike found in E. side power pole, 14 in. a.g., 12.10'

Boone County witness mark is a 3/8" diameter x 2' long rebar bearing a metal cap stamped "Boone County Witness Point."

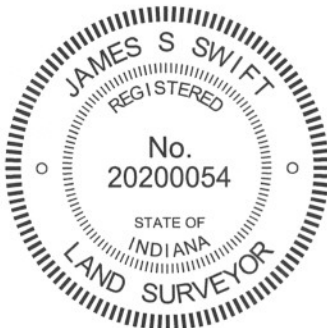
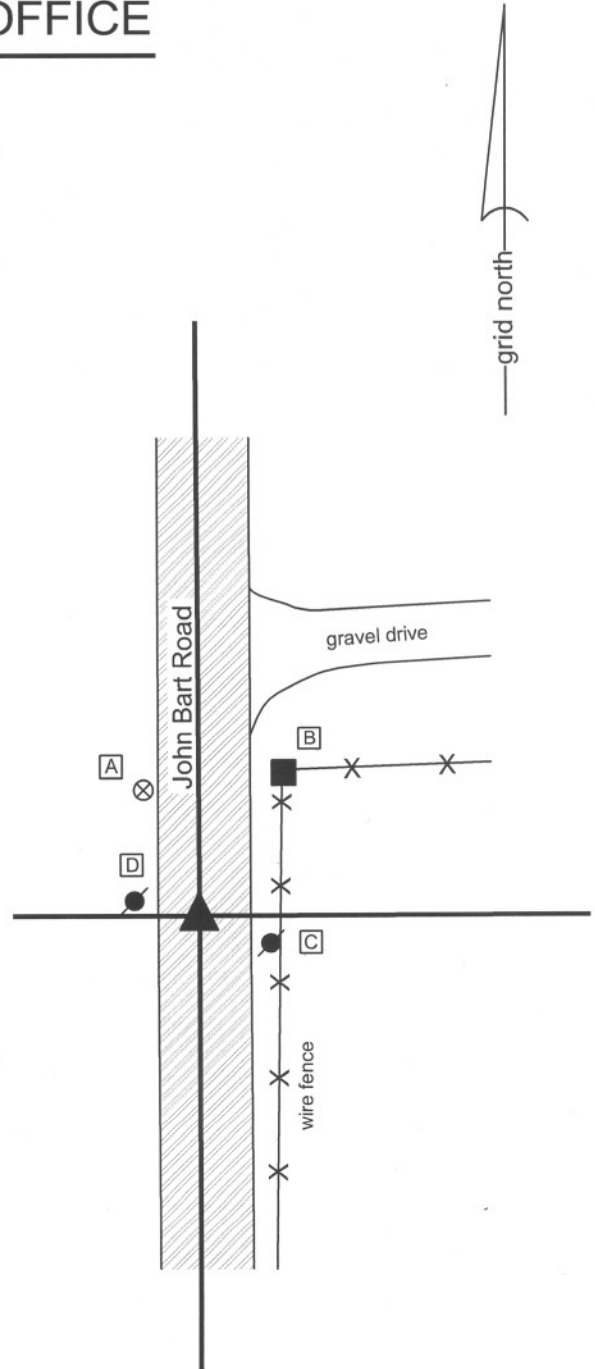
The harrison monument was found in place.

No specific descriptions of this corner were found in the BCS Surveyor's Record. An undated tie card believed to date from the late 1960s (most likely from 1968) shows the corner as a stone found, R.R. rail set, with attribution to the crew of "Ken and J.R." A tie card dated August 2, 2005 shows the corner as a harrison monument with no documentation of source.

It is known that it was common practice for crews in the late 1960s and early 1970s to remove a corner stone, if found, and replace it with a railroad rail set vertically. The 2005 tie card does not document the monument found or replaced when the harrison monument was set, but the distance ties generally agree with the ties from the earlier tie card.

No excavation was performed at this corner. The harrison monument appears to be stable and is believed to be in the same position as the stone found previously. The harrison monument was held as marking the corner.

This corner was originally established as a wood post in June, 1822.



*Kenneth E. Hedge*  
 Kenneth E. Hedge, County Surveyor

*James S. Swift*  
 James S. Swift, IN LS 20200054  
 January 15, 2013

Center Township

Section 30 T19N, R1E	Section 29 T19N, R1E
Section 31 T19N, R1E	Section 32 T19N, R1E