

# SECTION CORNER RECORD

NW 800-700

## BOONE COUNTY SURVEYOR'S OFFICE

State Plane grid coordinates NAD83 (CORS96):

North: 1787883.15 East: 3087831.72 (U.S. survey feet)

Type of monument: Harrison, 4" disk 'Section Corner'

Depth: flush with adjacent road surface

Indiana tie card references:

IN02\_T20NR2W23\_80 IN02\_T20NR2W24\_72

IN02\_T20NR2W26\_08 IN02\_T20NR2W25\_00

### CORNER WITNESS DETAIL

SCALE 1" = 40'



- A - Mag nail set in E. side power pole, 10 in. a.g., 3.04'
- B - Boone County witness mark, flush, 33.32'
- C - Mag nail set in W. side power pole, 2' a.g., 57.76'
- D - Boone County witness mark, flush, 70.36'

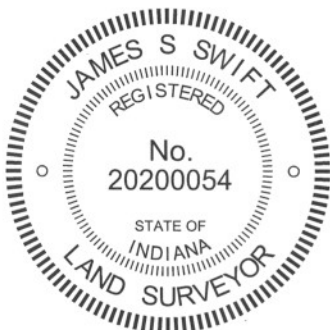
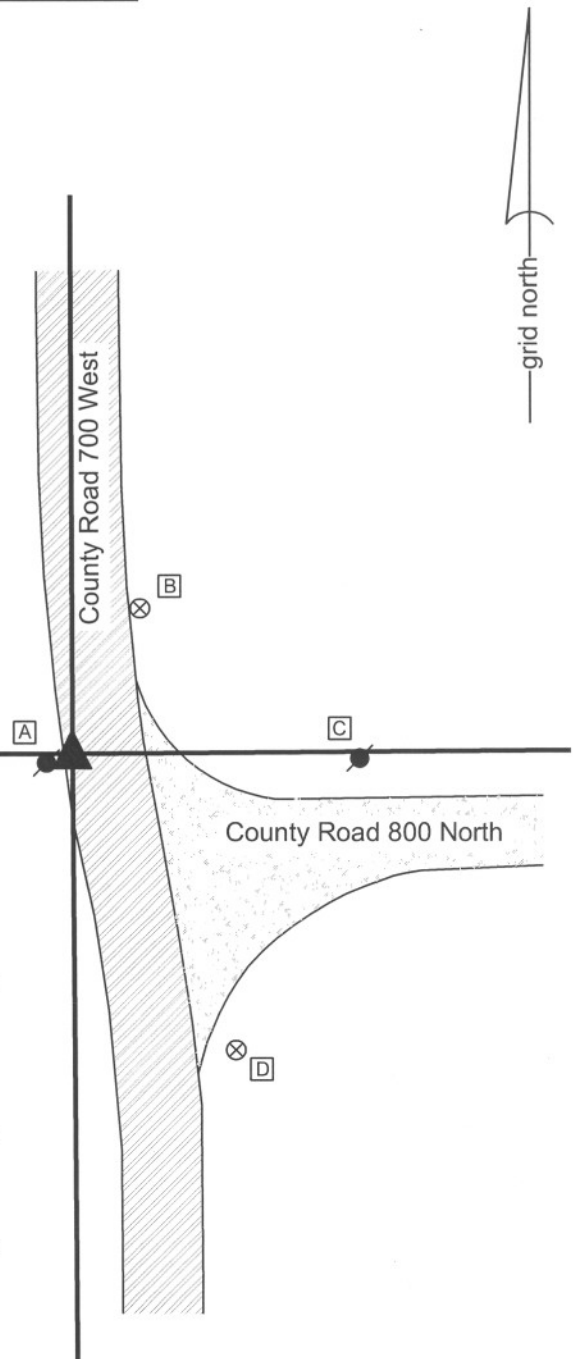
Boone County witness mark is a 3/8" diameter x 2' long rebar bearing a metal cap stamped "Boone County Witness Point."

The harrison monument was set over a vertical section of railroad rail found. No specific descriptions of this corner were found in the BCS Surveyor's Record beyond the original establishment of the corner as a wood post in 1829. The corner is shown on records of 1832, but not described. It is shown as the terminal point for measurements on records of 1889 and 1907. A BCS tie card dated October 2, 1964 states 'pile 3" x 5" stones found. RRR set.'

This corner was excavated on March 29, 2011 in response to questions about GIS parcel mapping in the vicinity. Prior to excavation a PK nail was found at the edge of County Road 700 West, in line with the southerly prolongation of the center of the road to the north and in line with the westerly prolongation of a fence to the west. The nail was removed and a rebar with a plastic cap stamped "Witness Point" was found below. The rebar was bent. The rebar was removed and a vertical section of railroad rail was found and 16 inches deep. The position of the rail was slightly northeast of the nail. The rail was accepted as being the monument called for on the 1964 tie card, set in place of the 'pile of stones.'

The deeds for several parcels in this immediate vicinity call for the east-west section line to be along the approximate north right-of-way of County Road 800 North and call for the north-south section line to the south of the corner as being along the approximate west right-of-way line of County Road 700 West. The position of the rail fit with this description and also fit with occupation and monumentation, relative to deed ties to the corner, for properties to the north and south of the corner.

The railroad rail was held as marking the corner and was left in place. The harrison monument was set directly over the rail.



*Kenneth E. Hedge*  
Kenneth E. Hedge, County Surveyor

*James S. Swift*  
James S. Swift, IN LS 20200054  
March 30, 2012

Sugar Creek Township

Section 23 T20N, R2W	Section 24 T20N, R2W
Section 26 T20N, R2W	Section 25 T20N, R2W