

SECTION CORNER RECORD

NE 500-100

BOONE COUNTY SURVEYOR'S OFFICE

State Plane grid coordinates NAD83 (CORS96):

North: 1772060.68 East: 3129821.84 (U.S. survey feet)

Type of monument: Harrison, 4" disk 'Section Corner'

Depth: six inches below adjacent gravel road surface

Indiana tie card references:

IN02_T19NR1E06_80 IN02_T19NR1E05_72

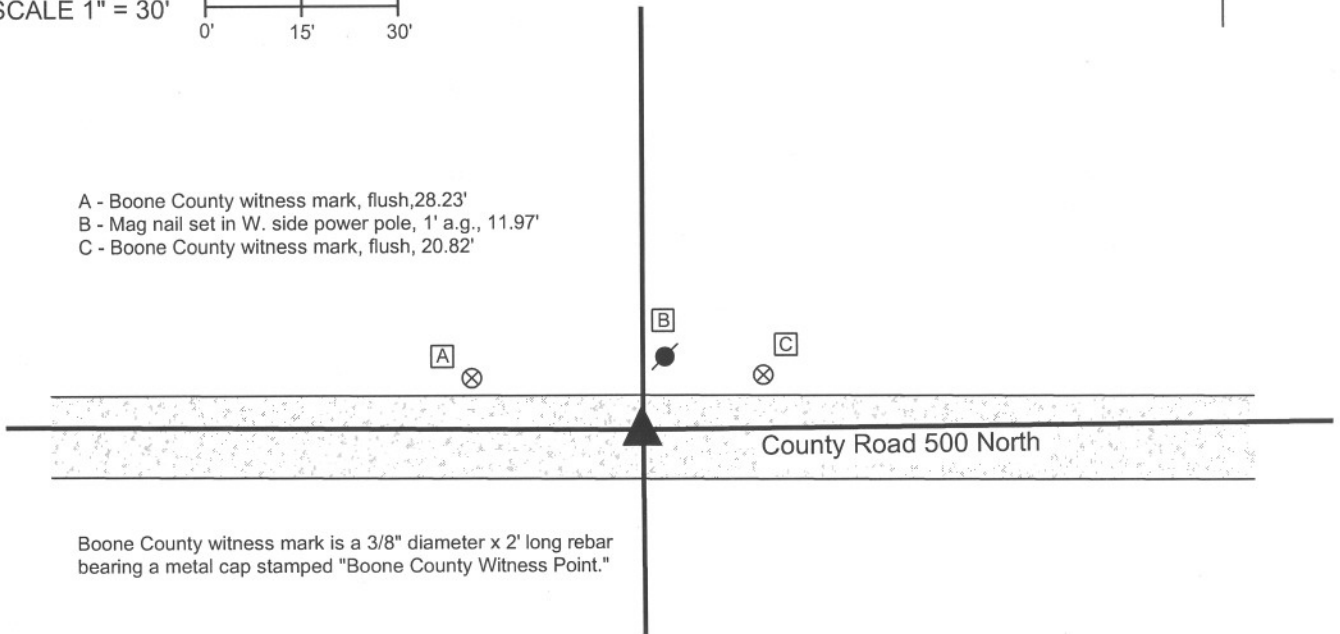
IN02_T19NR1E07_08 IN02_T19NR1E08_00



CORNER WITNESS DETAIL

SCALE 1" = 30'

- A - Boone County witness mark, flush, 28.23'
- B - Mag nail set in W. side power pole, 1' a.g., 11.97'
- C - Boone County witness mark, flush, 20.82'



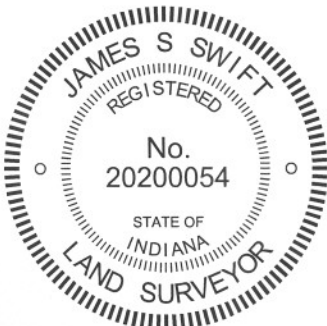
Boone County witness mark is a 3/8" diameter x 2' long rebar bearing a metal cap stamped "Boone County Witness Point."

The harrison monument was set in place of a harrison monument found.

No specific descriptions of this corner were found in the BCS Surveyor's Record. A BCS tie card dated September 29, 2005 shows the corner as a harrison monument with no documentation of source.

This corner was excavated on June 19, 2012. Prior to excavation a harrison monument was found which fit with the 2005 distance ties. Excavation of an area extending 4 feet north, 5 feet east, 4 feet south and 4 feet west of the harrison monument revealed no further evidence of the corner. The road bed is only 6 inches in this area. The harrison monument fit with local evidence in the form of the center of the county road to the east and west and the broken-off wood post on the north side of the road. The position of the found harrison was held as the corner. The found harrison monument was removed during excavation and replaced with a new harrison in the same position.

This corner was originally established as a wood post in June, 1822.



Kenneth E. Hedge, County Surveyor

James S. Swift, IN LS 20200054
January 15, 2013

Clinton Township

Section 6 T19N, R1E	Section 5 T19N, R1E
Section 7 T19N, R1E	Section 8 T19N, R1E